

069

04-24-2020 LETTING ITEM 069

STATE OF ILLINOIS
DEPARTMENT OF TRANSPORTATION

F A P R T E	SECTION	COUNTY	TOTAL SHEETS	SHEET NO.
91	D7 BRIDGE REPAIRS 2020-4	COLES	25	1
CONTRACT NO. 74928				

FOR INDEX OF SHEETS, SEE SHEET NO. 2

PROPOSED HIGHWAY PLANS

FAP ROUTE 91 (IL RTE 16)
SECTION D7 BRIDGE REPAIRS 2020-4

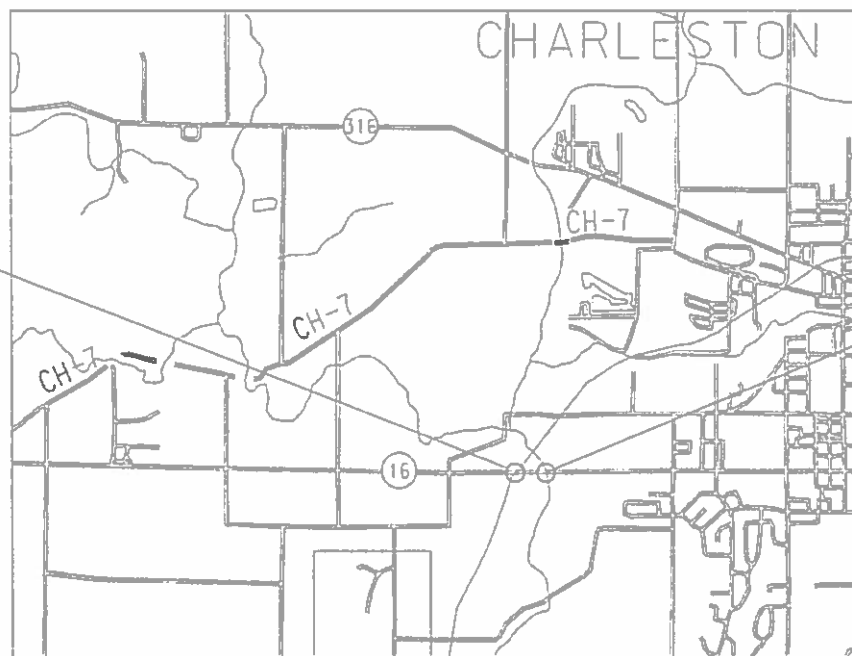
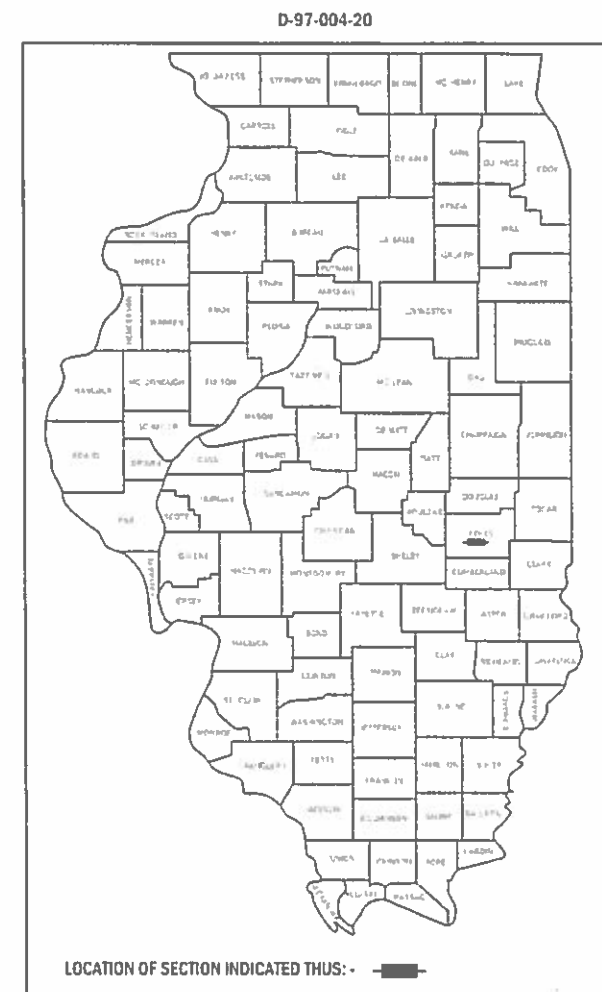
BRIDGE JOINT REPAIR AND PATCHING
COLES COUNTY

C-97-004-20

ADT = 15,200 (2017)

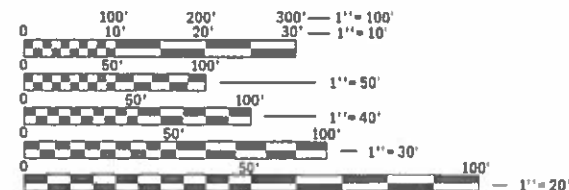
STATION EQUATIONS:

437+90.58 (BK) = 438+08.36 (AH)



SN 015-0015 (EB): STA 435+63.97
SN 015-0016 (WB): STA 434+05.53

SN 015-0018 (EB): STA 440+59.01
SN 015-0017 (WB): STA 440+24.99



FULL SIZE PLANS HAVE BEEN PREPARED USING STANDARD ENGINEERING SCALES. REDUCED SIZED PLANS WILL NOT CONFORM TO STANDARD SCALES. IN MAKING MEASUREMENTS ON REDUCED PLANS, THE ABOVE SCALES MAY BE USED.

J.U.L.I.E.
JOINT UTILITY LOCATION INFORMATION FOR EXCAVATION
1-800-892-0123
OR 811

PROJECT ENGINEER: DEBRA BARRETT
PROJECT MANAGER: BRIAN BIERMAN

CONTRACT NO. 74928

GROSS LENGTH = 1,141 FT. = 0.216 MILE
NET LENGTH = 1,141 FT. = 0.216 MILE

STATE OF ILLINOIS
DEPARTMENT OF TRANSPORTATION

SUBMITTED January 31, 2020
Jeff P. Myk
REGIONAL ENGINEER

March 20, 2020
EA
ENGINEER OF DESIGN AND ENVIRONMENT

March 20, 2020
James J. ...
DIRECTOR OF HIGHWAYS PROJECT IMPLEMENTATION

PRINTED BY THE AUTHORITY
OF THE STATE OF ILLINOIS

INDEX OF SHEETS

GENERAL NOTES

THIS PROJECT IS LOCATED APPROXIMATELY 0.5 MILE WEST OF CHARLESTON AT 4 DIFFERENT STRUCTURES ON FAP 91 (IL 16) IN COLES COUNTY. SN 015-0015 AND SN 015-0016 CROSS THE EASTERN IL RR, AND SN 015-0017 AND SN 015-0018 CROSS RILEY CREEK. THIS WORK CONSISTS OF BRIDGE DECK AND APPROACH PAVEMENT PATCHING AND NEW BRIDGE JOINTS ALONG WITH ANY OTHER WORK NECESSARY TO COMPLETE THIS SECTION.

THE LOCATIONS AND/OR DEPTHS OF UNDERGROUND UTILITIES SHOWN HAVE BEEN TAKEN FROM INFORMATION FURNISHED BY THE UTILITY OWNERS AND MUST BE CONSIDERED APPROXIMATE. FIELD MARKINGS OF FACILITIES IN CRITICAL AREAS MAY BE OBTAINED BY PROVIDING. MINIMUM OF NINETY-SIX (96) HOURS ADVANCE NOTICE THROUGH THE THE J.U.L.I.E. SYSTEM BY CALLING 800-892-0123.

THE CONTRACTOR SHALL COORDINATE ALL WORK WITH ADJACENT PROJECTS AS DIRECTED BY THE ENGINEER.

SHEET NO.	ITEM
1	COVER SHEET
2	GENERAL NOTES, INDEX OF SHEETS & LIST OF STANDARDS
3	SUMMARY OF QUANTITIES
4	SCHEDULES
5-6	STAGE 1 CONSTRUCTION
7-8	STAGE 2 CONSTRUCTION
9-17	SN 015-0015 & SN 015-0016 STRUCTURE REPAIR PLANS
18-25	SN 015-0017 & SN 015-0018 STRUCTURE REPAIR PLANS

THE FOLLOWING STANDARDS ARE A PART OF THESE PLANS AND ARE INCLUDED FOLLOWING THE LAST NUMBERED SHEET OF THE PLANS.

STANDARD NO.	DESCRIPTION
000001-07	STANDARD SYMBOLS, ABBREVIATIONS AND PATTERNS
001001-02	AREAS OF REINFORCEMENT BARS
001006	DECIMAL OF AN INCH AND OF A FOOT
701423-10	LANE CLOSURE, MULTILANE, WITH BARRIER, FOR SPEEDS >= 45 MPH TO 55 MPH
701426-09	LANE CLOSURE, MULTILANE, INTERMITTENT OR MOVING OPER., FOR SPEEDS >= 45 MPH
701901-08	TRAFFIC CONTROL DEVICES
704001-08	TEMPORARY CONCRETE BARRIER
780001-05	TYPICAL PAVEMENT MARKINGS
781001-04	TYPICAL APPLICATIONS RAISED REFLECTIVE PAVEMENT MARKERS

MODEL: Default
 FILE: \\blm1c1-pub\planroom\dat\illinois\pwr\PROJECTS\DOT\Office\Drawings\74928\CADD\Drawings\74928-5-11-2020-11-2020.dgn

USER NAME = steffenmk	DESIGNED -	REVISED -	STATE OF ILLINOIS DEPARTMENT OF TRANSPORTATION	GENERAL NOTES, INDEX OF SHEETS & LIST OF STANDARDS	F.A.P. RTE.	SECTION	COUNTY	TOTAL SHEETS	SHEET NO.
DRAWN -	REVISED -	91			D7 BRIDGE REPAIRS 2020-4	COLES	25	2	
PLOT SCALE = 100.0000' / in.	CHECKED -	REVISED -			CONTRACT NO. 74928				
PLOT DATE = 1/31/2020	DATE -	REVISED -			ILLINOIS	FED. AID PROJECT			
				SCALE:	SHEET	OF	SHEETS	STA.	TO STA.

100%
STATE

100%
STATE

SUMMARY OF QUANTITIES			TOTAL QUANTITIES	CONSTRUCTION TYPE CODE		
CODE NO	ITEM	UNIT		0047		
50102400	CONCRETE REMOVAL	CU YD	40.5	40.5		
50157300	PROTECTIVE SHIELD	SQ YD	504	504		
50300255	CONCRETE SUPERSTRUCTURE	CU YD	39.7	39.7		
50300300	PROTECTIVE COAT	SQ YD	125	125		
50800205	REINFORCEMENT BARS, EPOXY COATED	POUND	5070	5070		
50800515	BAR SPLICERS	EACH	88	88		
52000110	PREFORMED JOINT STRIP SEAL	FOOT	334	334		
67100100	MOBILIZATION	L SUM	1	1		
70107005	PAVEMENT MARKING BLACKOUT TAPE, 5"	FOOT	5565	5565		
70107025	CHANGEABLE MESSAGE SIGN	CAL DA	28	28		
70400100	TEMPORARY CONCRETE BARRIER	FOOT	2224	2224		
70400200	RELOCATE TEMPORARY CONCRETE BARRIER	FOOT	2224	2224		
70600250	IMPACT ATTENUATORS, TEMPORARY (NON-REDIRECTIVE), TEST LEVEL 3	EACH	2	2		

SUMMARY OF QUANTITIES			TOTAL QUANTITIES	CONSTRUCTION TYPE CODE		
CODE NO	ITEM	UNIT		0047		
70600350	IMPACT ATTENUATORS, RELOCATE (NON-REDIRECTIVE), TEST LEVEL 3	EACH	2	2		
78100300	REPLACEMENT REFLECTOR	EACH	34	34		
X7010218	TRAFFIC CONTROL AND PROTECTION, (SPECIAL)	EACH	2	2		
X7040125	PINNING TEMPORARY CONCRETE BARRIER	EACH	483	483		
X7830050	RAISED REFLECTIVE PAVEMENT MARKER, REFLECTOR REMOVAL	EACH	34	34		
Z0001700	APPROACH SLAB REPAIR (FULL DEPTH)	SQ YD	4	4		
Z0001800	APPROACH SLAB REPAIR (PARTIAL DEPTH)	SQ YD	52	52		
Z0016200	DECK SLAB REPAIR (PARTIAL)	SQ YD	4	4		
Z0048665	RAILROAD PROTECTIVE LIABILITY INSURANCE	L SUM	1	1		
Z0073300	TEMPORARY SHORING AND CRIBBING	L SUM	1	1		

MODEL: Default
 FILE: \\blm01c-pub\pubroom\ada\illinois\pwr\pwr\DOT\Documents\DOT_Offices\blm01c-7\Projects\74928\CAD\Drawings\74928-STS-500.dgn

USER NAME = steffenmk	DESIGNED -	REVISED -
PLOT SCALE = 100.0000' / in.	DRAWN -	REVISED -
PLOT DATE = 1/31/2020	CHECKED -	REVISED -
	DATE -	REVISED -

**STATE OF ILLINOIS
DEPARTMENT OF TRANSPORTATION**

SUMMARY OF QUANTITIES

SCALE: SHEET OF SHEETS STA. TO STA.

F.A.P. RTE.	SECTION	COUNTY	TOTAL SHEETS	SHEET NO.
91	D7 BRIDGE REPAIRS 2020-4	COLES	25	3
CONTRACT NO. 74928				
ILLINOIS FED. AID PROJECT				

MODEL: Default
 FILE: Model: pub\planroom.dwg
 PROJECT: 74928\CADD\DATA\CADD\sheet\DOT - Office\DOT.dwg
 PROJECT: 74928\CADD\DATA\CADD\sheet\DOT - Office\DOT.dwg

STATION TO STATION				PAVEMENT MARKING BLACKOUT TAPE, 5"		RAISED REFLECTIVE PAVEMENT MARKER, REFLECTOR REMOVAL		RAISED PAVEMENT MARKER REFLECTOR REPLACEMENT	
				FOOT	EACH	EACH	EACH		
STAGE I: EB									
STA	418+52	TO	STA	425+12	165.0	17	-	-	-
STA	430+53	TO	STA	437+91	737.6	-	-	-	-
STA EQU: STA 437+90.58 BK = STA 438+08.36 AH									
STA	438+08	TO	STA	443+49	540.6	-	-	-	-
STAGE I: WB									
STA	431+85	TO	STA	437+91	605.6	-	-	-	-
STA EQU: STA 437+90.58 BK = STA 438+08.36 AH									
STA	438+08	TO	STA	443+77	568.6	-	-	-	-
STA	449+31	TO	STA	455+91	165.0	17	-	-	-
STAGE II: EB									
STA	418+80	TO	STA	425+40	165.0	-	-	17	-
STA	430+53	TO	STA	437+91	737.6	-	-	-	-
STA EQU: STA 437+90.58 BK = STA 438+08.36 AH									
STA	438+08	TO	STA	443+49	540.6	-	-	-	-
STAGE II: WB									
STA	431+85	TO	STA	437+91	605.6	-	-	-	-
STA EQU: STA 437+90.58 BK = STA 438+08.36 AH									
STA	438+08	TO	STA	443+77	568.6	-	-	-	-
STA	449+03	TO	STA	455+63	165.0	-	-	17	-
TOTALS:					5565	34	34	-	-

STATION TO STATION				TEMPORARY CONCRETE BARRIER		RELOCATE TEMPORARY CONCRETE BARRIER		PINNING TEMPORARY CONCRETE BARRIER		IMPACT ATTENUATORS, TEMPORARY (NON-REDIRECTIVE), TEST LEVEL 3		IMPACT ATTENUATORS, RELOCATE (NON-REDIRECTIVE), TEST LEVEL 3	
				FOOT	EACH	FOOT	EACH	EACH	EACH	EACH	EACH		
STAGE I: EB													
STA	430+89	TO	STA	431+89	100.0	-	-	1	-	-	-	-	-
STA	431+89	TO	STA	432+64	75.0	-	15	-	-	-	-	-	-
STA	432+64	TO	STA	434+51	187.0	-	-	-	-	-	-	-	-
STA	434+51	TO	STA	437+91	339.6	-	81	-	-	-	-	-	-
STA EQU: STA 437+90.58 BK = STA 438+08.36 AH													
STA	438+08	TO	STA	439+07	98.6	-	24	-	-	-	-	-	-
STA	439+07	TO	STA	442+19	312.0	-	-	-	-	-	-	-	-
STA	442+19	TO	STA	442+57	38.0	-	9	-	-	-	-	-	-
STAGE I: WB													
STA	432+62	TO	STA	433+00	38.0	-	9	-	-	-	-	-	-
STA	433+00	TO	STA	434+87	187.0	-	-	-	-	-	-	-	-
STA	434+87	TO	STA	437+91	303.6	-	73	-	-	-	-	-	-
STA EQU: STA 437+90.58 BK = STA 438+08.36 AH													
STA	438+08	TO	STA	438+79	70.5	-	17	-	-	-	-	-	-
STA	438+79	TO	STA	441+91	312.1	-	-	-	-	-	-	-	-
STA	441+91	TO	STA	442+54	63.0	-	12	-	-	-	-	-	-
STA	442+54	TO	STA	443+54	100.0	-	-	1	-	-	-	-	-
STAGE II: EB													
STA	430+89	TO	STA	431+89	-	100.0	-	-	-	-	1	-	-
STA	431+89	TO	STA	432+64	-	75.0	15	-	-	-	-	-	-
STA	432+64	TO	STA	434+39	-	175.0	-	-	-	-	-	-	-
STA	434+39	TO	STA	437+91	-	351.6	84	-	-	-	-	-	-
STA EQU: STA 437+90.58 BK = STA 438+08.36 AH													
STA	438+08	TO	STA	439+07	-	98.6	24	-	-	-	-	-	-
STA	439+07	TO	STA	442+32	-	325.0	-	-	-	-	-	-	-
STA	442+32	TO	STA	442+57	-	25.0	6	-	-	-	-	-	-
STAGE II: WB													
STA	432+62	TO	STA	433+12	-	50.0	12	-	-	-	-	-	-
STA	433+12	TO	STA	434+87	-	175.0	-	-	-	-	-	-	-
STA	434+87	TO	STA	437+91	-	303.6	73	-	-	-	-	-	-
STA EQU: STA 437+90.58 BK = STA 438+08.36 AH													
STA	438+08	TO	STA	438+79	-	71.0	17	-	-	-	-	-	-
STA	438+79	TO	STA	441+91	-	311.6	-	-	-	-	-	-	-
STA	441+91	TO	STA	442+54	-	63.0	12	-	-	-	-	-	-
STA	442+54	TO	STA	443+54	-	100.0	-	-	-	-	-	1	-
TOTALS:					2224	2224	483	2	2	-	-	-	-

USER NAME = stefenmk	DESIGNED -	REVISED -
	DRAWN -	REVISED -
PLOT SCALE = 100.0000 ' / in.	CHECKED -	REVISED -
PLOT DATE = 1/31/2020	DATE -	REVISED -

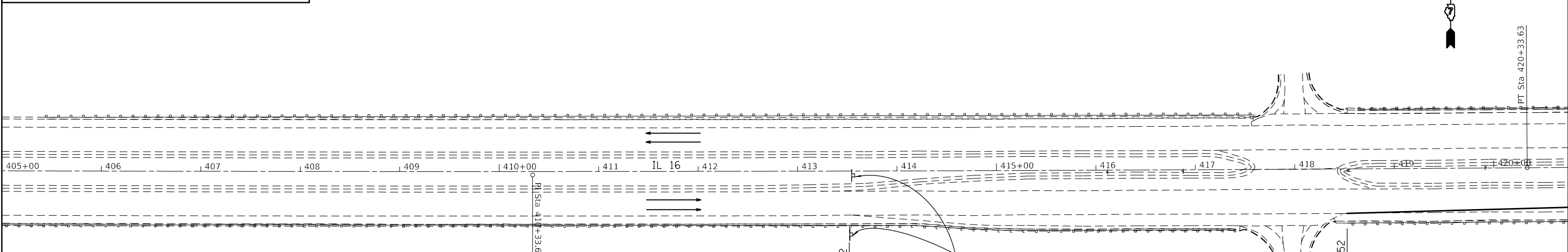
**STATE OF ILLINOIS
 DEPARTMENT OF TRANSPORTATION**

SCHEDULE OF QUANTITIES

SCALE: SHEET OF SHEETS STA. TO STA.

F.A.P. RTE.	SECTION	COUNTY	TOTAL SHEETS	SHEET NO.
91	D7 BRIDGE REPAIRS 2020-4	COLES	25	4
CONTRACT NO. 74928				
ILLINOIS FED. AID PROJECT				

SYMBOLS	
	SIGN
	IMPACT ATTENUATORS (NON-REDIRECTIVE)
	TEMPORARY CONCRETE BARRIER



PLACE RCA SIGNAGE 500' FROM IL 16 AT THE FOLLOWING SIDEROADS:
 N. & S. PERSIMMON RD. - STA 365+50
 N. & S. BEECH TREE RD. - STA 391+75
 N. & S. REDBUD RD. - STA 418+00
 N. & S. DOUGLAS ST. - STA 470+80
 N. & S. REYNOLDS DR. - STA 480+74
 E ST. & UNIVERSITY DR. - STA 497+45



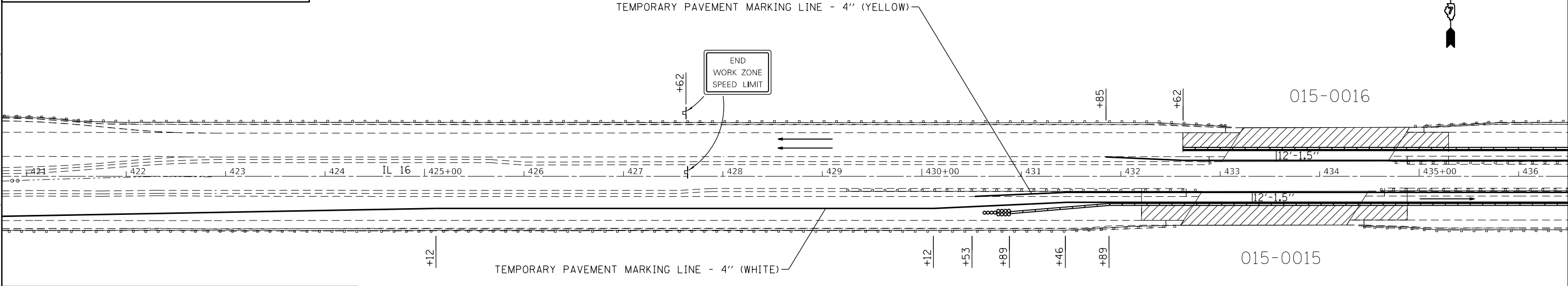
W20-1103(O)-48

EXIST. CURVE C2
 PI STA. = 410+33.63
 $\Delta = 0^\circ 46' 52''$ (LT)
 $D = 0^\circ 02' 21''$
 $R = 146,716.32'$
 $T = 1,000.03'$
 $L = 2,000.03'$
 $E = 3.41'$
 $e =$
 $T.R. =$
 $S.E. RUN =$
 $P.C. STA. = 400+33.60$
 $P.T. STA. = 420+33.63$

SEE HIGHWAY STANDARD 701423 FOR ADVANCED SIGNAGE AND ADDITIONAL DETAILS NOT SHOWN ON THIS SHEET.

WORK ZONE W21-1115(O)-3618
 SPEED LIMIT R2-1-3648
45
 PHOTO ENFORCED R10-19aP-3618
 \$XXX FINE MINIMUM R2-1106-3618

SYMBOLS	
	SIGN
	IMPACT ATTENUATORS (NON-REDIRECTIVE)
	TEMPORARY CONCRETE BARRIER



PLACE RCA SIGNAGE 500' FROM IL 16 AT THE FOLLOWING SIDEROADS:
 N. & S. PERSIMMON RD. - STA 365+50
 N. & S. BEECH TREE RD. - STA 391+75
 N. & S. REDBUD RD. - STA 418+00
 N. & S. DOUGLAS ST. - STA 470+80
 N. & S. REYNOLDS DR. - STA 480+74
 E ST. & UNIVERSITY DR. - STA 497+45



W20-1103(O)-48

TEMPORARY PAVEMENT MARKING LINE - 4" (YELLOW)

END WORK ZONE SPEED LIMIT

TEMPORARY PAVEMENT MARKING LINE - 4" (WHITE)

MODEL: Default
 FILE: Main: C:\pub\baronm\ada\illinois\pwr\WIDOT\Documents\IBDOT_Offices\DLR\rlct_7\re\brct\74928\CADD\data\CAD\kchess\0774928-shc-plan.dgn

USER NAME = steffnmk	DESIGNED -	REVISED -
DRAWN -	REVISOR -	REVISOR -
PLOT SCALE = 100.0000' / in.	CHECKED -	REVISOR -
PLOT DATE = 1/31/2020	DATE -	REVISOR -

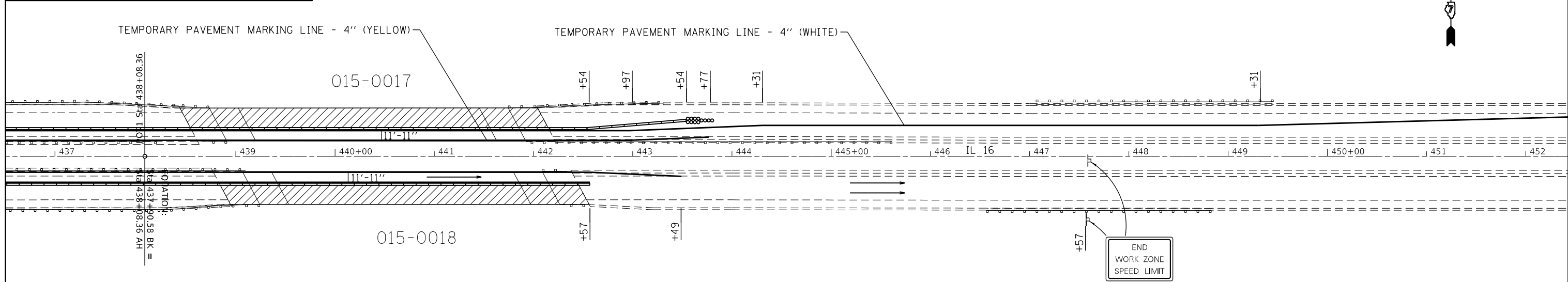
**STATE OF ILLINOIS
 DEPARTMENT OF TRANSPORTATION**

STAGE I CONSTRUCTION

SCALE: SHEET OF SHEETS STA. TO STA.

F.A.P. RTE.	SECTION	COUNTY	TOTAL SHEETS	SHEET NO.
91	D7 BRIDGE REPAIRS 2020-4	COLES	25	5
CONTRACT NO. 74928				
ILLINOIS FED. AID PROJECT				

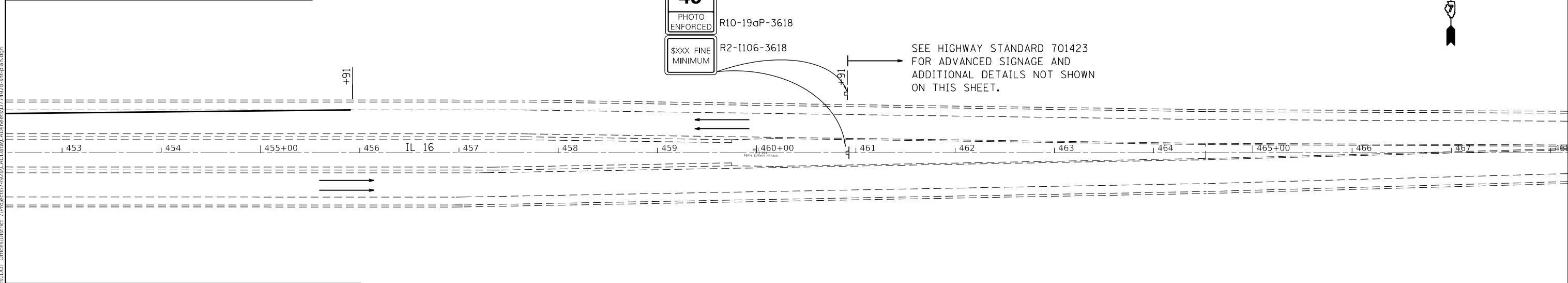
SYMBOLS	
	SIGN
	IMPACT ATTENUATORS (NON-REDIRECTIVE)
	TEMPORARY CONCRETE BARRIER



PLACE RCA SIGNAGE 500' FROM IL 16 AT THE FOLLOWING SIDEROADS:
 N. & S. PERSIMMON RD. - STA 365+50
 N. & S. BEECH TREE RD. - STA 391+75
 N. & S. REDBUD RD. - STA 418+00
 N. & S. DOUGLAS ST. - STA 470+80
 N. & S. REYNOLDS DR. - STA 480+74
 E ST. & UNIVERSITY DR. - STA 497+45

W20-1103(O)-48

SYMBOLS	
	SIGN
	IMPACT ATTENUATORS (NON-REDIRECTIVE)
	TEMPORARY CONCRETE BARRIER



PLACE RCA SIGNAGE 500' FROM IL 16 AT THE FOLLOWING SIDEROADS:
 N. & S. PERSIMMON RD. - STA 365+50
 N. & S. BEECH TREE RD. - STA 391+75
 N. & S. REDBUD RD. - STA 418+00
 N. & S. DOUGLAS ST. - STA 470+80
 N. & S. REYNOLDS DR. - STA 480+74
 E ST. & UNIVERSITY DR. - STA 497+45

W20-1103(O)-48

MODEL: Default
 FILE: A:\mhc\p\pub\baronm\dat\illinois\p\w\DOT\Documents\DOT - Offices\District 7\Projects\74928\CADD\sheet\74928-she01a.dgn

USER NAME = steffnmk	DESIGNED -	REVISED -
PLOT SCALE = 100.0000' / in.	DRAWN -	REVISED -
PLOT DATE = 1/31/2020	CHECKED -	REVISED -
	DATE -	REVISED -

**STATE OF ILLINOIS
DEPARTMENT OF TRANSPORTATION**

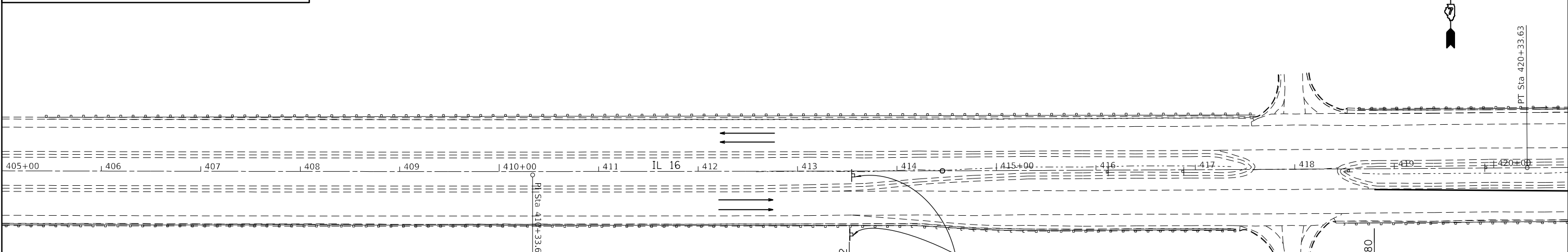
STAGE I CONSTRUCTION

SCALE: SHEET OF SHEETS STA. TO STA.

F.A.P. RTE.	SECTION	COUNTY	TOTAL SHEETS	SHEET NO.
91	D7 BRIDGE REPAIRS 2020-4	COLES	25	6
ILLINOIS			FED. AID PROJECT	

CONTRACT NO. 74928

SYMBOLS	
	SIGN
	IMPACT ATTENUATORS (NON-REDIRECTIVE)
	TEMPORARY CONCRETE BARRIER



PLACE RCA SIGNAGE 500' FROM IL 16 AT THE FOLLOWING SIDEROADS:
 N. & S. PERSIMMON RD. - STA 365+50
 N. & S. BEECH TREE RD. - STA 391+75
 N. & S. REDBUD RD. - STA 418+00
 N. & S. DOUGLAS ST. - STA 470+80
 N. & S. REYNOLDS DR. - STA 480+74
 E ST. & UNIVERSITY DR. - STA 497+45



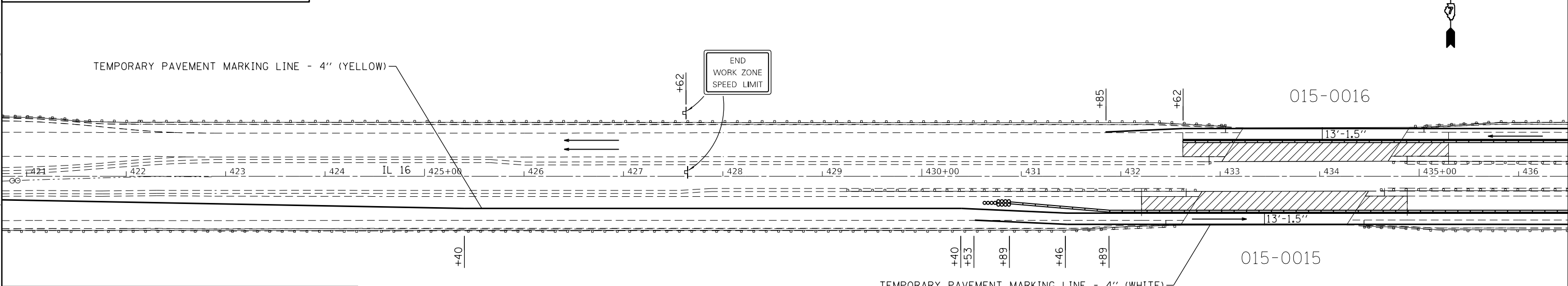
W20-1103(O)-48

EXIST. CURVE C2
 PI STA. = 410+33.63
 $\Delta = 0^\circ 46' 52''$ (LT)
 $D = 0^\circ 02' 21''$
 $R = 146,716.32'$
 $T = 1,000.03'$
 $L = 2,000.03'$
 $E = 3.41'$
 $e = \text{---}$
 $T.R. = \text{---}$
 $S.E. RUN = \text{---}$
 $P.C. STA. = 400+33.60$
 $P.T. STA. = 420+33.63$

SEE HIGHWAY STANDARD 701423 FOR ADVANCED SIGNAGE AND ADDITIONAL DETAILS NOT SHOWN ON THIS SHEET.

WORK ZONE	W21-1115(O)-3618
SPEED LIMIT	R2-1-3648
45	
PHOTO ENFORCED	R10-19aP-3618
\$XXX FINE MINIMUM	R2-1106-3618

SYMBOLS	
	SIGN
	IMPACT ATTENUATORS (NON-REDIRECTIVE)
	TEMPORARY CONCRETE BARRIER



PLACE RCA SIGNAGE 500' FROM IL 16 AT THE FOLLOWING SIDEROADS:
 N. & S. PERSIMMON RD. - STA 365+50
 N. & S. BEECH TREE RD. - STA 391+75
 N. & S. REDBUD RD. - STA 418+00
 N. & S. DOUGLAS ST. - STA 470+80
 N. & S. REYNOLDS DR. - STA 480+74
 E ST. & UNIVERSITY DR. - STA 497+45



W20-1103(O)-48

MODEL: Default
 FILE: MainC:\pub\baronm\data\illinois\pwr\WIDOT\Documents\IBDOT_Offices\DLR\ref_7\Projects\74928\CADD\data\CAD\chess\0774928-shc-plan.dgn

USER NAME = steffemk	DESIGNED -	REVISED -
PLOT SCALE = 100,0000' / in.	DRAWN -	REVISED -
PLOT DATE = 1/31/2020	CHECKED -	REVISED -
	DATE -	REVISED -

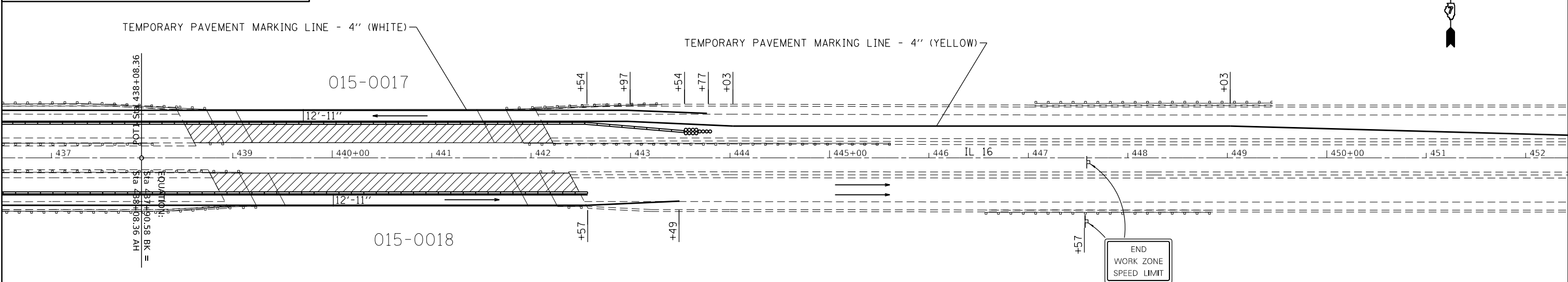
**STATE OF ILLINOIS
 DEPARTMENT OF TRANSPORTATION**

SCALE:		SHEET OF SHEETS		STA. TO STA.	

STAGE II CONSTRUCTION

F.A.P. RTE.	SECTION	COUNTY	TOTAL SHEETS	SHEET NO.
91	D7 BRIDGE REPAIRS 2020-4	COLES	25	7
CONTRACT NO. 74928				
ILLINOIS FED. AID PROJECT				

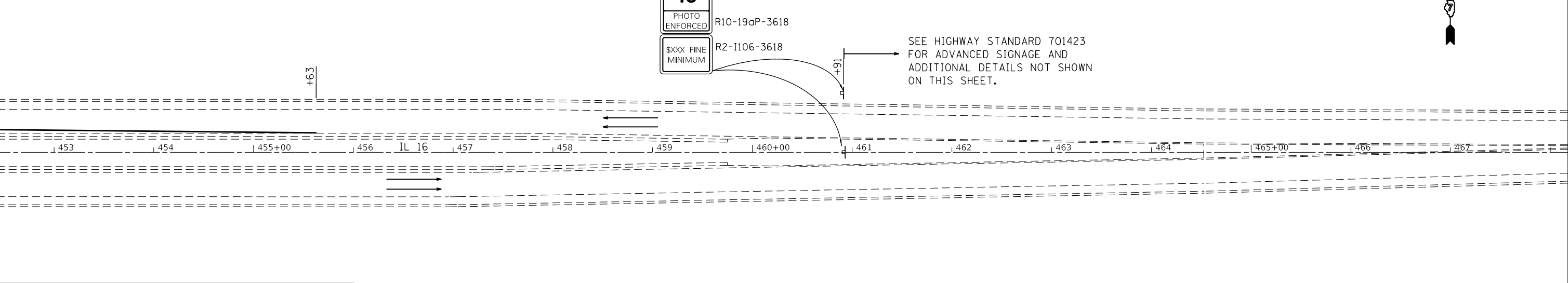
SYMBOLS	
	SIGN
	IMPACT ATTENUATORS (NON-REDIRECTIVE)
	TEMPORARY CONCRETE BARRIER



PLACE RCA SIGNAGE 500' FROM IL 16 AT THE FOLLOWING SIDEROADS:
 N. & S. PERSIMMON RD. - STA 365+50
 N. & S. BEECH TREE RD. - STA 391+75
 N. & S. REDBUD RD. - STA 418+00
 N. & S. DOUGLAS ST. - STA 470+80
 N. & S. REYNOLDS DR. - STA 480+74
 E ST. & UNIVERSITY DR. - STA 497+45



SYMBOLS	
	SIGN
	IMPACT ATTENUATORS (NON-REDIRECTIVE)
	TEMPORARY CONCRETE BARRIER



PLACE RCA SIGNAGE 500' FROM IL 16 AT THE FOLLOWING SIDEROADS:
 N. & S. PERSIMMON RD. - STA 365+50
 N. & S. BEECH TREE RD. - STA 391+75
 N. & S. REDBUD RD. - STA 418+00
 N. & S. DOUGLAS ST. - STA 470+80
 N. & S. REYNOLDS DR. - STA 480+74
 E ST. & UNIVERSITY DR. - STA 497+45



WORK ZONE	W21-1115(O)-3618
SPEED LIMIT	R2-1-3648
45	
PHOTO ENFORCED	R10-19aP-3618
\$XXX FINE MINIMUM	R2-1106-3618

SEE HIGHWAY STANDARD 701423 FOR ADVANCED SIGNAGE AND ADDITIONAL DETAILS NOT SHOWN ON THIS SHEET.

MODEL: Default
 FILE: h:\m\c\p\pub\baronm.d\at\illinois\p\w\DOT\Documents\DOT_Offices\District_7\Projects\74928\CADD\Sheet\74928-shc-plan.dgn

USER NAME = steffemk	DESIGNED -	REVISED -
PLOT SCALE = 100.0000' / in.	DRAWN -	REVISED -
PLOT DATE = 1/31/2020	CHECKED -	REVISED -
	DATE -	REVISED -

**STATE OF ILLINOIS
 DEPARTMENT OF TRANSPORTATION**

SCALE:		SHEET OF SHEETS		STA. TO STA.	

STAGE II CONSTRUCTION

F.A.P. RTE.	SECTION	COUNTY	TOTAL SHEETS	SHEET NO.
91	D7 BRIDGE REPAIRS 2020-4	COLES	25	8
CONTRACT NO. 74928				
ILLINOIS FED. AID PROJECT				

Existing Structures: S.N. 015-0015 and S.N. 015-0016 were originally constructed in 1961 as F.A. Rte. 17, Section 51 VB-VF. The decks were removed and replaced and the abutments were reconstructed in 1991. Each structure consists of a three span steel beam superstructure with a poured concrete deck on spill thru pile supported abutments and hammerhead piers. The existing structures are 170'-0" Bk. to Bk. of abutments, 37'-2" O. to O. of deck and 34'-0" Fc. to Fc. of parapets. Traffic is to be maintained under staged construction.

SCOPE OF WORK

1. Remove and replace expansion joints at both abutments.
2. Repair deck and approach slabs.

GENERAL NOTES

Reinforcement bars designated (E) shall be epoxy coated. Plan dimensions and details relative to existing plans are subject to nominal construction variations. The Contractor shall field verify existing dimensions and details affecting new construction and make necessary approved adjustments prior to construction or ordering of materials. Such variations shall not be cause for additional compensation for a change in scope of the work, however, the Contractor will be paid for the quantity actually furnished at the unit price bid for the work.

Protective coat shall be applied to areas of new concrete. Joint openings shall be adjusted according to Article 520.04 of the Standard Specifications when the deck is poured at an ambient temperature other than 50°F.

Prior to pouring the new concrete deck, all heavy or loose rust, loose mill scale, and other loose or potentially detrimental foreign material shall be removed from the surfaces in contact with new concrete. Tightly adhered paint may remain unless otherwise noted. Removal shall be accomplished by methods that will not damage the steel and the cost will be included with Concrete Removal.

Areas of deck repairs shown are estimated. The engineer shall show actual locations of deck repairs on as-built plans.

The deck surface shall have its final finish tined according to Article 420.09(e)(1) of the Standard Specifications. Cost included with Concrete Superstructure.

The deck surface shall have its final finish tined according to Article 420.09(e)(1) of the Standard Specifications. Cost included with Concrete Superstructure.

TOTAL BILL OF MATERIAL

ITEM	UNIT	TOTAL
Concrete Removal	Cu. Yd.	22.8
Protective Shield	Sq. Yd.	504
Concrete Superstructure	Cu. Yd.	22.5
Reinforcement Bars, Epoxy Coated	Pound	1930
Protective Coat	Sq. Yd.	63
Preformed Joint Strip Seal	Foot	172
Approach Slab Repair (Full Depth)	Sq. Yd.	4
Approach Slab Repair (Partial Depth)	Sq. Yd.	49
Deck Slab Repair (Partial)	Sq. Yd.	4
Bar Splicers	Each	48

* New concrete at joints only.

GENERAL PLAN AND ELEVATION

F.A.P. RTE. 91 (IL 16)

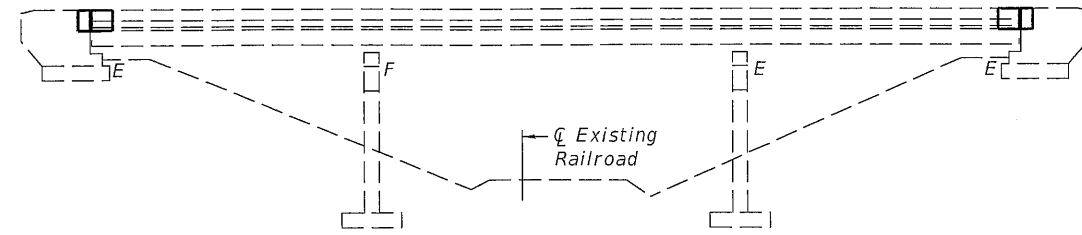
OVER THE EASTERN IL RAILROAD

SECTION D-7 BRIDGE REPAIRS 2020-4

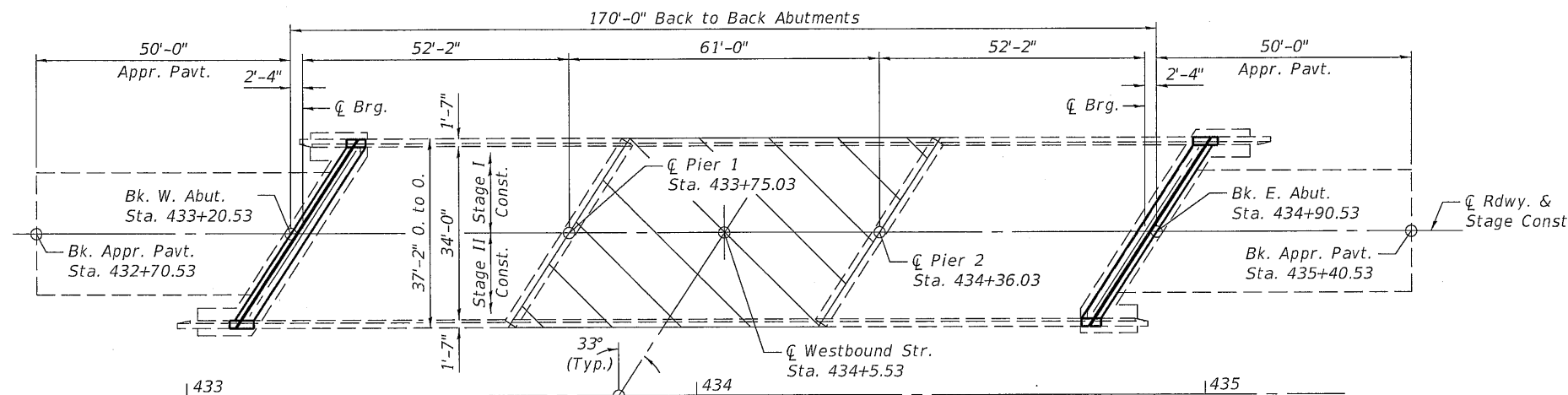
COLES COUNTY

STA 433+84.75

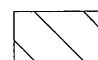
STRUCTURE NO. 015-0015 (EB), 0016 (WB)

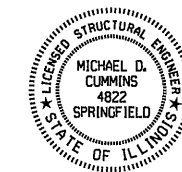


ELEVATION



PLAN

 - Limits of Protective Shield



Michael D. Cummins 1/31/20
(Expires 11/30/20)

STATE OF ILLINOIS
DEPARTMENT OF TRANSPORTATION

GENERAL PLAN AND ELEVATION
STRUCTURE NO. 015-0015, 0016

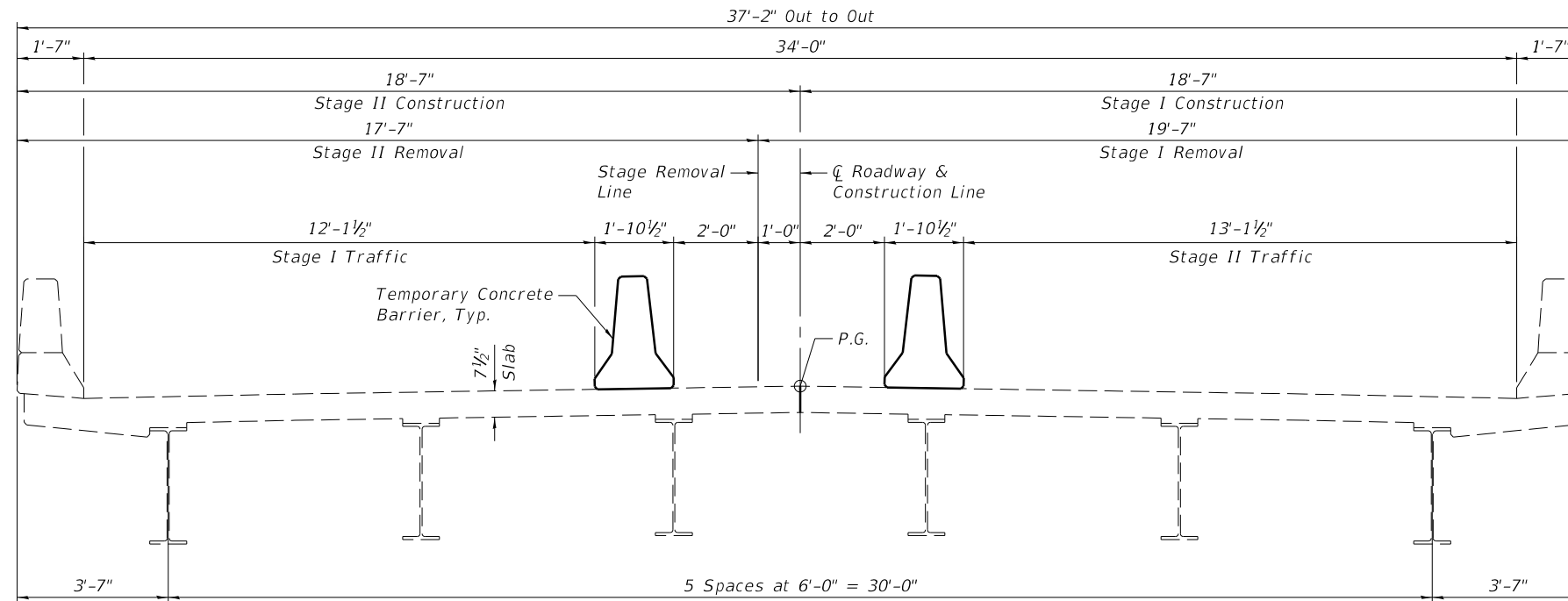
SHEET 1 OF 9 SHEETS

F.A.P. RTE.	SECTION	COUNTY	TOTAL SHEETS	SHEET NO.
91	D-7 BRIDGE REPAIRS 2020-4	COLES	25	9
ILLINOIS FED. AID PROJECT			CONTRACT NO. 74928	

MODEL: \$MODELNAMES
FILE NAME: \$FILES

CEC Cummins
Engineering
Corporation
Civil and Structural Engineering

JOB # = 2480.5	DESIGNED - AAN	REVISED -
FILE NAME = \$FILESS	CHECKED - MDC	REVISED -
PLOT DATE = \$DATES	DRAWN - SJS	REVISED -
	CHECKED - MDC	REVISED -



CROSS SECTION
 (SN 015-0015 Eastbound looking East)
 (SN 015-0016 Westbound Looking West)

MODEL: \$MODELNAME\$
 FILE NAME: \$FILEL\$



JOB = 2480.5	DESIGNED - AAN	REVISED -
FILE NAME = \$FILEL\$	CHECKED - MDC	REVISED -
PLOT DATE = \$DATE\$	DRAWN - SJS	REVISED -
	CHECKED - MDC	REVISED -

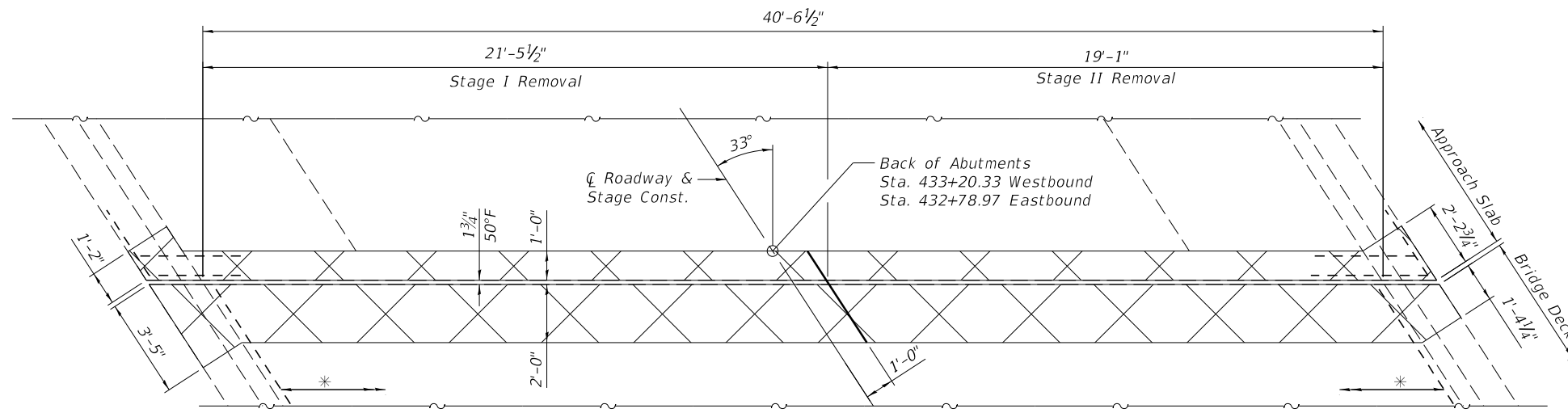
**STATE OF ILLINOIS
 DEPARTMENT OF TRANSPORTATION**

**STAGE CONSTRUCTION DETAIL
 STRUCTURE NO. 015-0015, 0016**

SHEET 2 OF 9 SHEETS

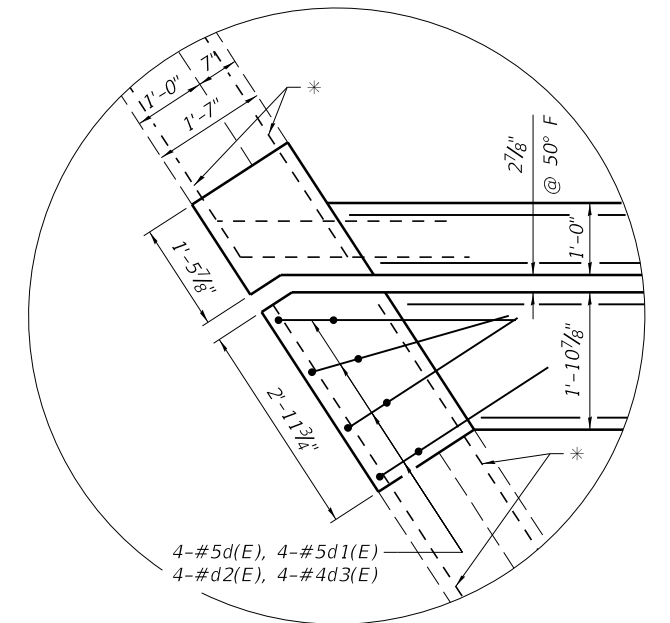
F.A.P. RTE.	SECTION	COUNTY	TOTAL SHEETS	SHEET NO.
91	D-7 BRIDGE REPAIRS 2020-4	COLES	25	10
ILLINOIS			FED. AID PROJECT	

CONTRACT NO. 74928

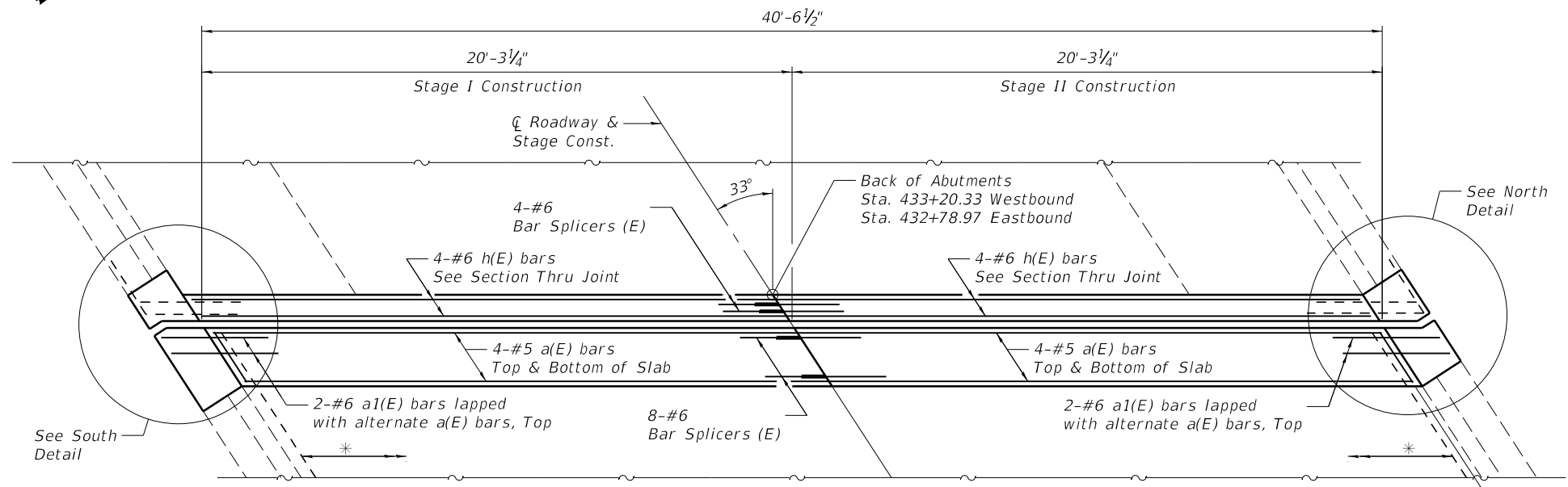


EXISTING PLAN AT EXPANSION JOINT
(E.B. Structure shown, W.B. Structure similar)

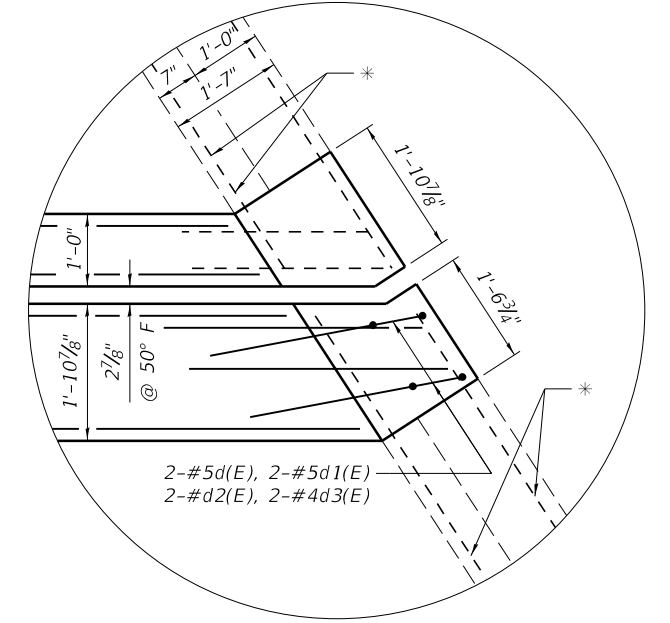
Cross-hatched area indicates limits of Concrete Removal.



SOUTH-DETAIL



PROPOSED PLAN AT EXPANSION JOINT
(E.B. Structure shown, W.B. Structure similar)



NORTH-DETAIL

* Existing reinforcement shall be cleaned and incorporated into the new construction. Cost included with Concrete Removal.

MODEL: \$MODELNAME\$
FILE NAME: \$FILELS\$



JOB =	2480.5
FILE NAME =	\$FILELS\$
PLOT DATE =	\$DATE\$

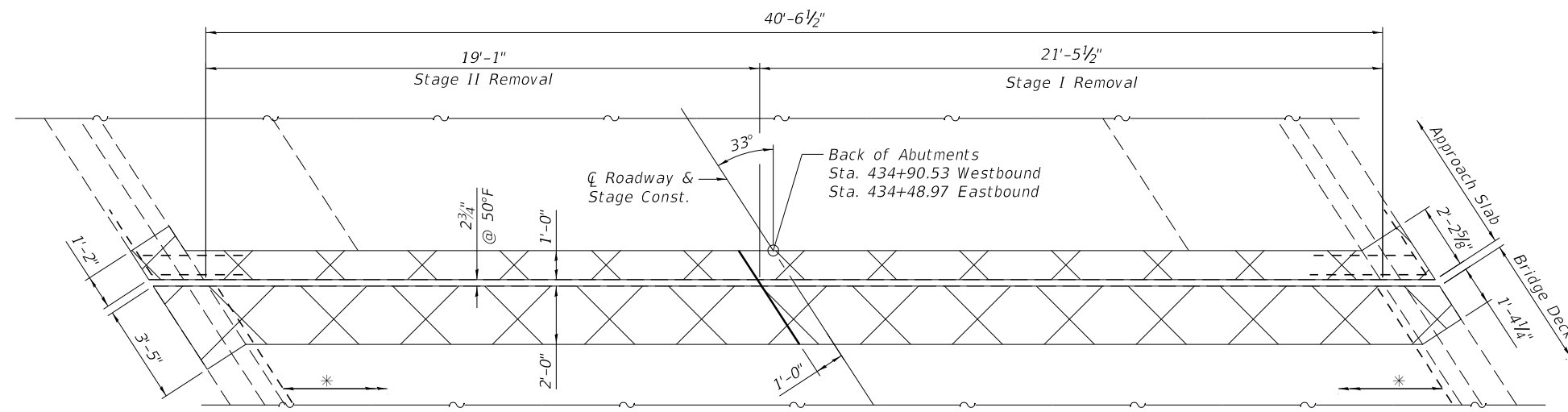
DESIGNED -	AAN	REVISED -	
CHECKED -	MDC	REVISED -	
DRAWN -	SJS	REVISED -	
CHECKED -	MDC	REVISED -	

STATE OF ILLINOIS
DEPARTMENT OF TRANSPORTATION

WEST ABUTMENTS JOINT REPLACEMENT DETAILS
STRUCTURE NO. 015-0015, 0016

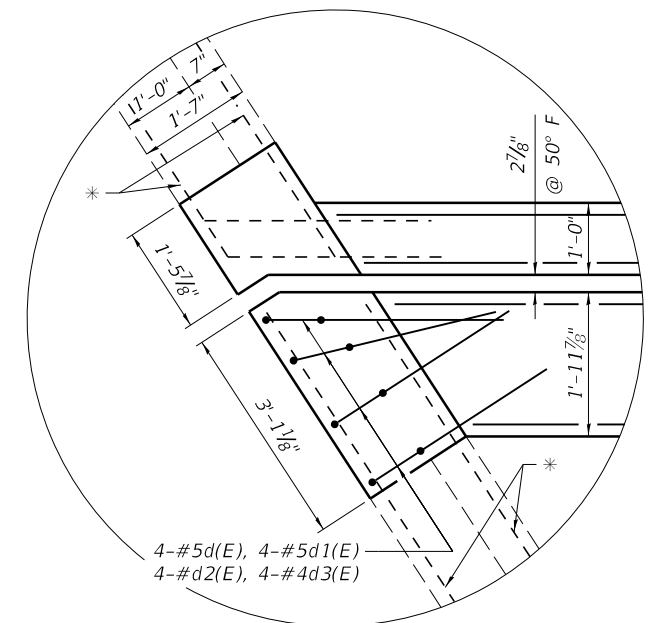
SHEET 5 OF 9 SHEETS

F.A.P. RTE.	SECTION	COUNTY	TOTAL SHEETS	SHEET NO.
91	D-7 BRIDGE REPAIRS 2020-4	COLES	25	13
CONTRACT NO. 74928				
ILLINOIS FED. AID PROJECT				

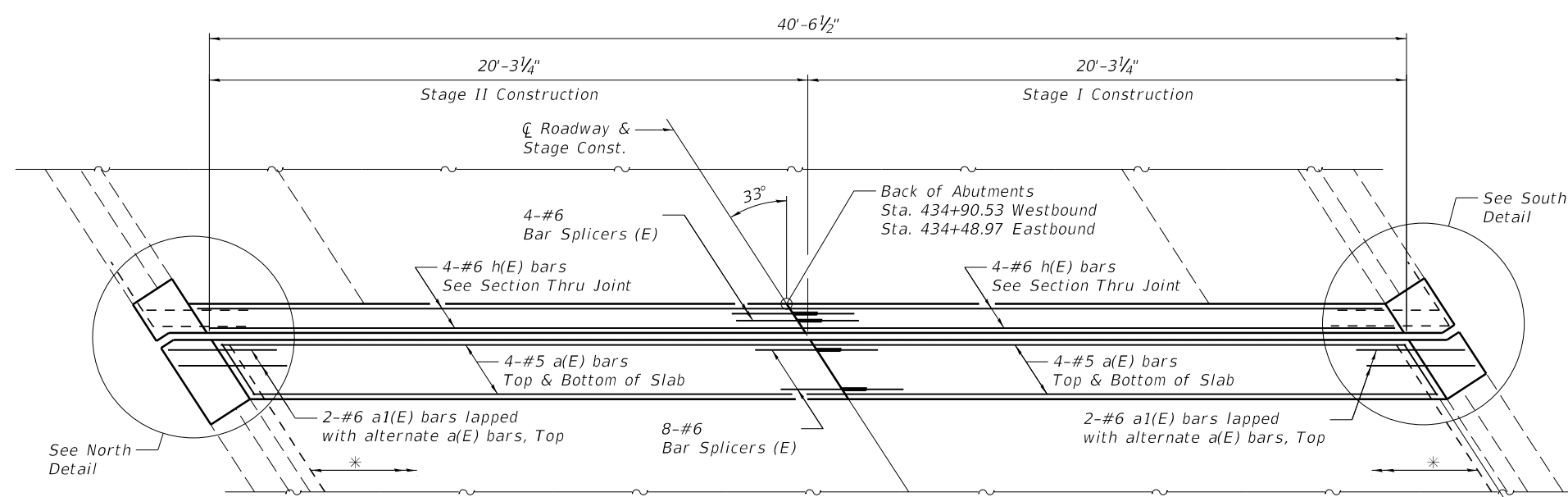


EXISTING PLAN AT EXPANSION JOINT
(E.B. Structure shown, W.B. Structure similar)

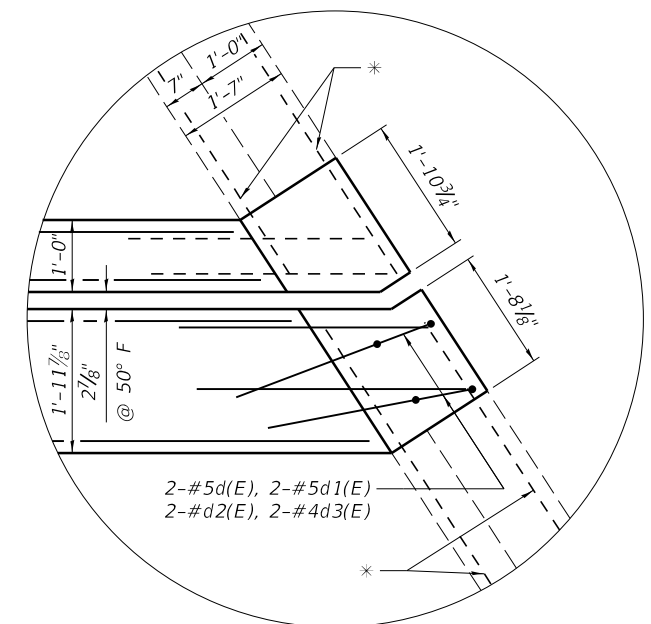
Cross-hatched area indicates limits of Concrete Removal.



NORTH-DETAIL



PROPOSED PLAN AT EXPANSION JOINT
(E.B. Structure shown, W.B. Structure similar)



SOUTH-DETAIL

34-#5 x(E) bars @ 12" cts.
lap w/ exist. longitudinal bars
(17-Stage I, 17-Stage II)

* Existing longitudinal reinforcement shall be cleaned and incorporated into the new construction. Cost included with Concrete Removal.

MODEL: \$MODELNAME\$
FILE NAME: \$FILEL\$

CEC Cummins
Engineering
Corporation
Civil and Structural Engineering

JOB = 2480.5
FILE NAME = \$FILEL\$
PLOT DATE = \$DATE\$

DESIGNED - AAN	REVISED -
CHECKED - MDC	REVISED -
DRAWN - SJS	REVISED -
CHECKED - MDC	REVISED -

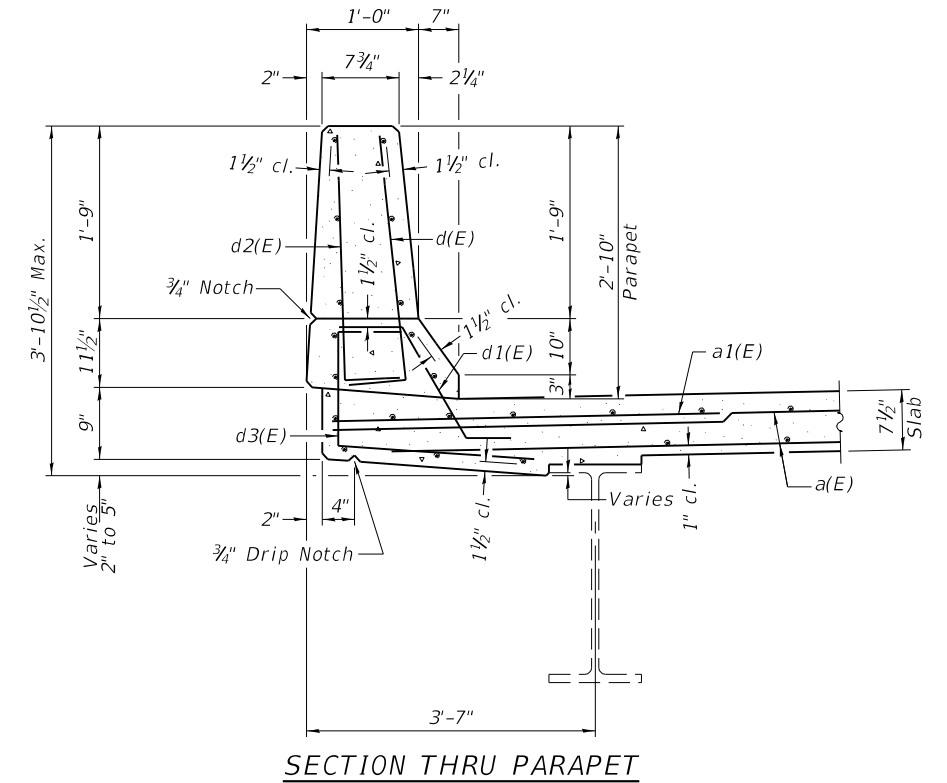
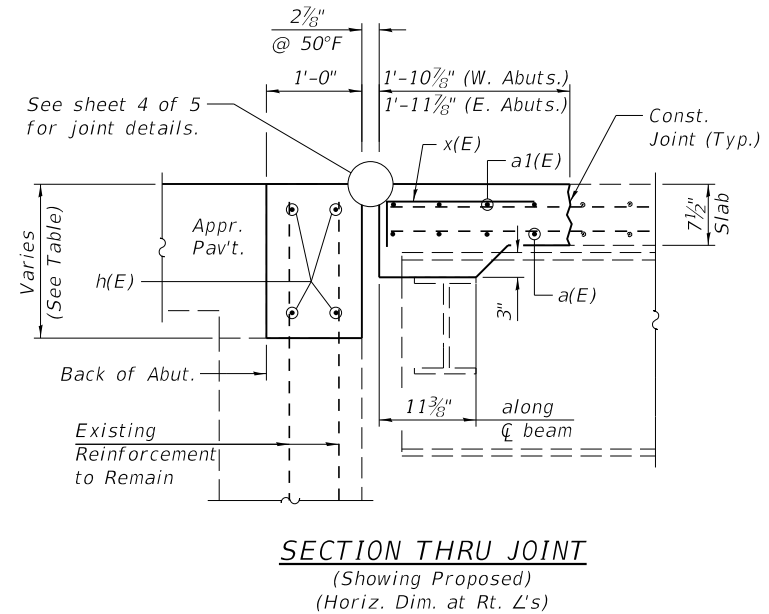
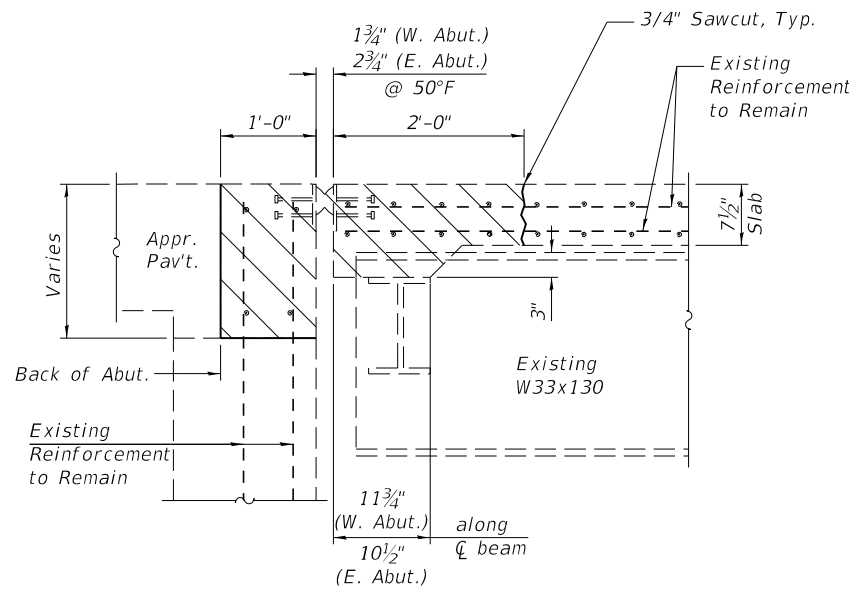
STATE OF ILLINOIS
DEPARTMENT OF TRANSPORTATION

EAST ABUTMENTS JOINT REPLACEMENT DETAILS
STRUCTURE NO. 015-0015, 0016

SHEET 6 OF 9 SHEETS

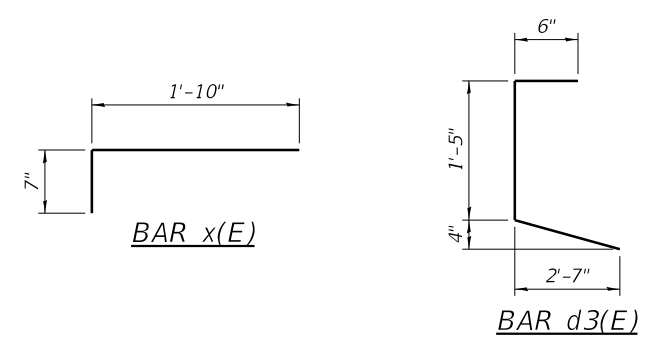
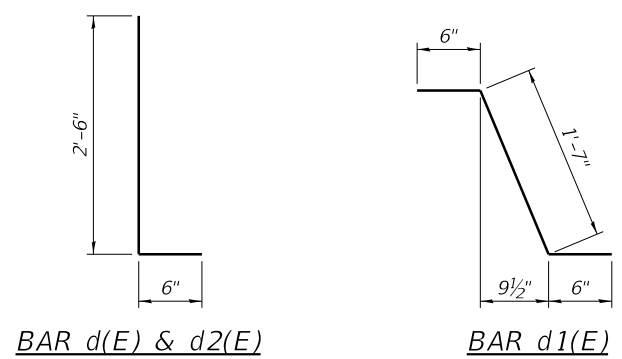
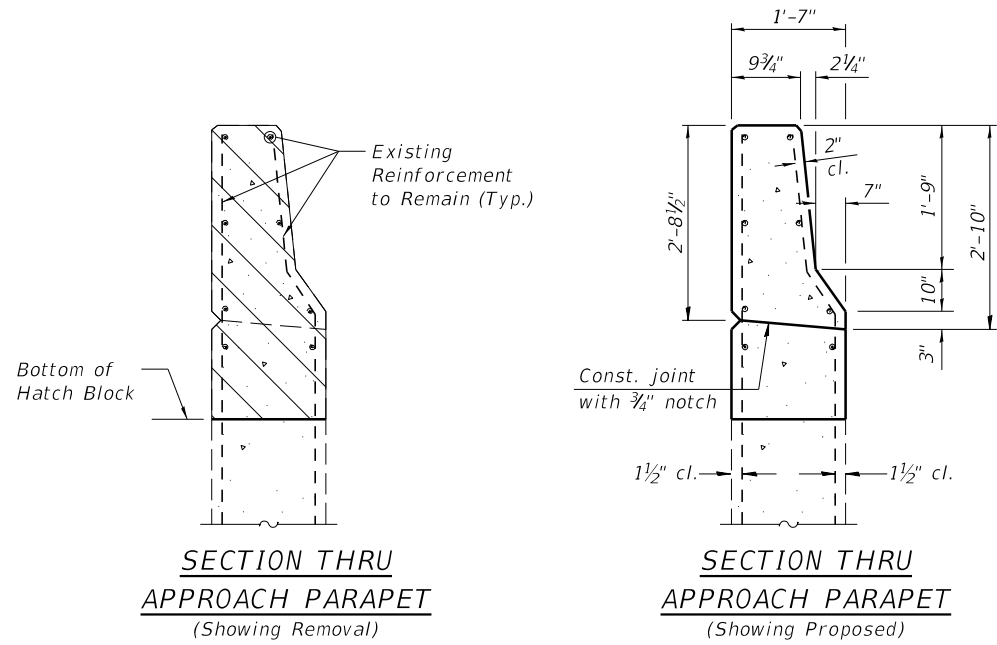
F.A.P. RTE.	SECTION	COUNTY	TOTAL SHEETS	SHEET NO.
91	D-7 BRIDGE REPAIRS 2020-4	COLES	25	14
CONTRACT NO. 74928				

ILLINOIS FED. AID PROJECT



HATCH BLOCK DIMENSIONS

Structure	Location		
	S. Parapet	beam	N. Parapet
W. Abut. E.B.	1'-4"	1'-8 3/4"	1'-6 1/8"
E. Abut. E.B.	1'-4 1/2"	1'-8 1/4"	1'-4 7/8"
W. Abut. W.B.	1'-4 7/8"	1'-9 3/8"	1'-6 5/8"
W. Abut. W.B.	1'-5 1/4"	1'-8 7/8"	1'-5 3/8"



TWO SUPERSTRUCTURES
BILL OF MATERIAL

Bar	No.	Size	Length	Shape	
a(E)	32	#5	20'-8"	—	
a1(E)	16	#6	6'-6"	—	
d(E)	24	#5	3'-0"	—	
d1(E)	24	#5	2'-7"	┘	
d2(E)	24	#4	3'-0"	—	
d3(E)	24	#4	4'-6"	└	
h(E)	16	#6	20'-0"	—	
x(E)	136	#5	2'-5"	┘	
Reinforcement Bars, Epoxy Coated				Pound	1930
Concrete Superstructure				Cu. Yd.	22.5
Concrete Removal				Cu. Yd.	22.8

Notes:
Hatched areas indicate limits of Concrete Removal.
Existing reinforcement to remain shall be cleaned and incorporated into the new construction. Cost included with Concrete Removal.
Any reinforcement bars that are damaged during concrete removal shall be replaced with an approved bar splicer or anchorage system. Cost included with Concrete removal.

MODEL: \$MODELNAMES
FILE NAME: \$FILES



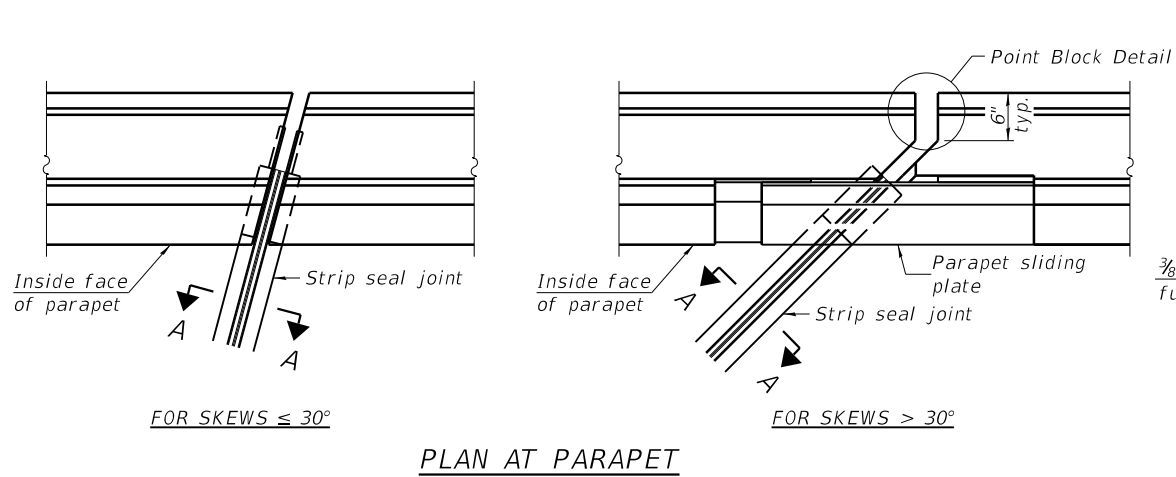
JOB = 2480.5	DESIGNED - AAN	REVISED -
FILE NAME = \$FILES\$	CHECKED - MDC	REVISED -
PLOT DATE = \$DATES\$	DRAWN - SJS	REVISED -
	CHECKED - MDC	REVISED -

STATE OF ILLINOIS
DEPARTMENT OF TRANSPORTATION

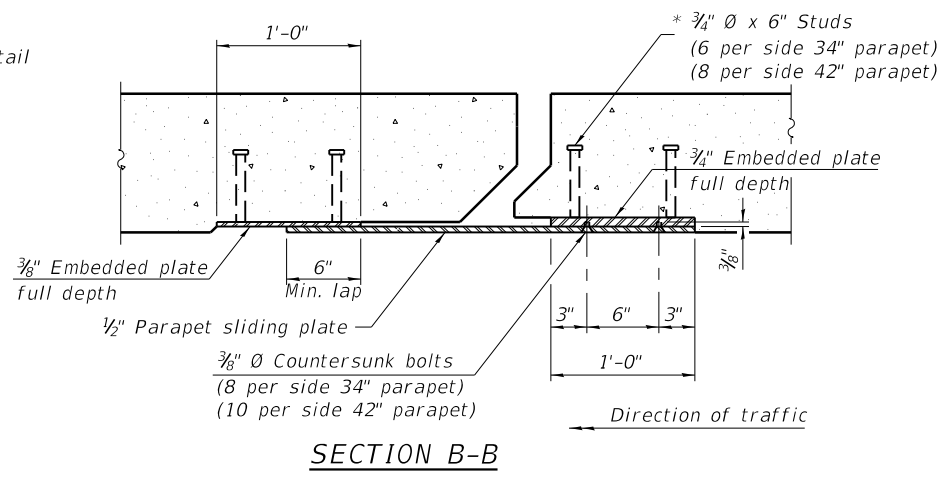
JOINT REPLACEMENT DETAILS
STRUCTURE NO. 015-0015, 0016

SHEET 7 OF 9 SHEETS

F.A.P. RTE.	SECTION	COUNTY	TOTAL SHEETS	SHEET NO.
91	D-7 BRIDGE REPAIRS 2020-4	COLES	25	15
CONTRACT NO. 74928				
ILLINOIS FED. AID PROJECT				

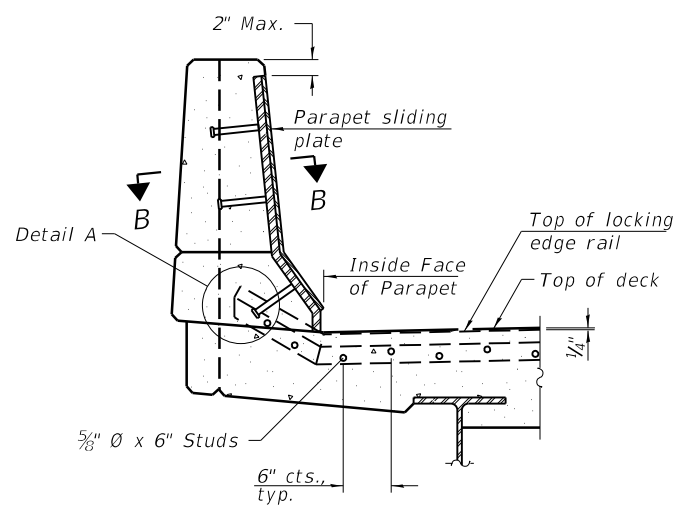


PLAN AT PARAPET



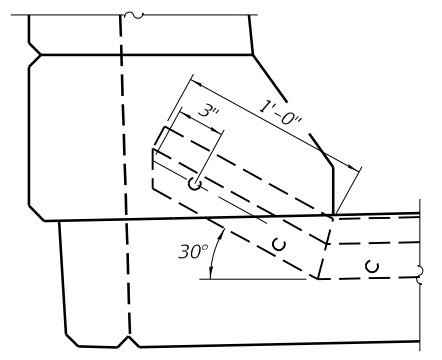
SECTION B-B

Notes:
 The strip seal shall be made continuous and shall have a minimum thickness of 1/4". The configuration of the strip seal shall match the configuration of the locking edge rails. Open or "webbed" strip seal gland configurations are not permitted. The gland shall be sized for a maximum rated movement of 4 inches.
 The locking edge rails depicted are configured for typical applications and are conceptual only. The actual configuration of the locking edge rails and matching strip seal may vary from manufacturer to manufacturer provided they fit the application and meet the minimum anchorage shown. Flanged edge rails, however, will not be allowed. Locking edge rails may exceed the 4 1/2" maximum depth provided the anchorage system is revised according to the manufacturer's recommendation.
 The manufacturer's recommended installation methods shall be followed.
 All steel components shall be galvanized after fabrication according to Article 520.03 of the Standard Specifications.
 The Maximum space between locking edge rail segments shall be 3/16" and sealed with a suitable sealant; however, any rail joint within 10' measured perpendicular to the face of the curb or parapet shall be welded as shown in the locking edge rail splice detail.

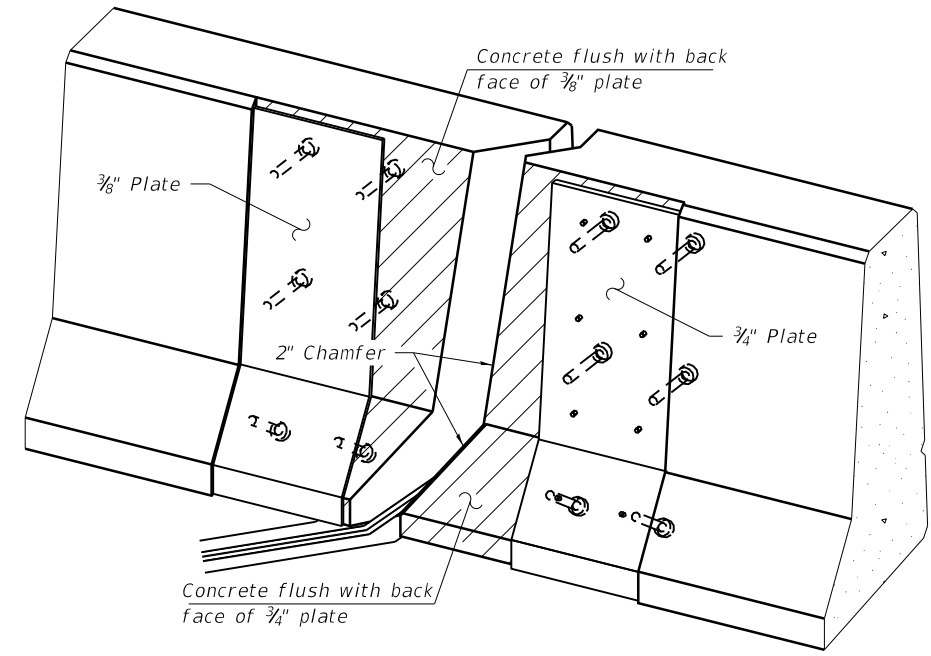


ELEVATION AT PARAPET

(Skews > 30° shown. Skews ≤ 30° similar except as shown in plan view.)

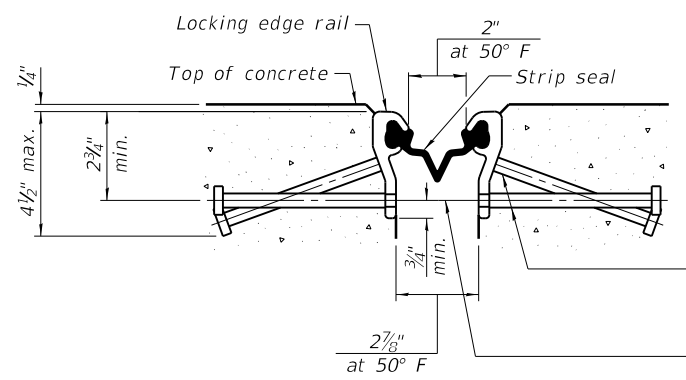


DETAIL A



TRIMETRIC VIEW
 (Showing embedded plates only)

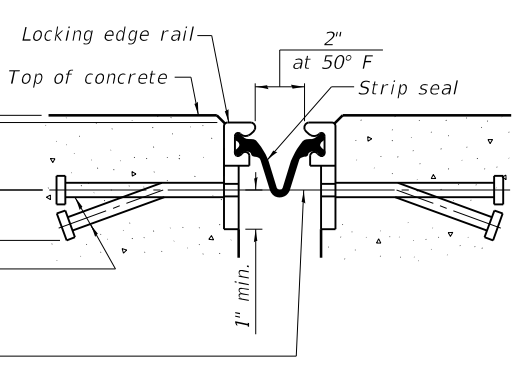
Cost of parapet sliding plates, embedded plates, and anchorage studs included with Preformed Joint Strip Seal.
 34" F-shape barrier shown, 42" F-shape similar as noted.
 The concrete opening below the strip seal will vary based on the locking edge rail chosen by the Contractor. Deck and parapet lengths shown elsewhere in the plans are dimensioned to the concrete opening, not the joint opening, and are based on the rolled locking edge rail. If the Contractor elects to use a different locking edge rail, dimensional adjustments may be required. One exception to this would be the strip seal joint at the end of the precast bridge approach slab. For these cases the pavement connector length shall be adjusted, not the length of the bridge approach slab.



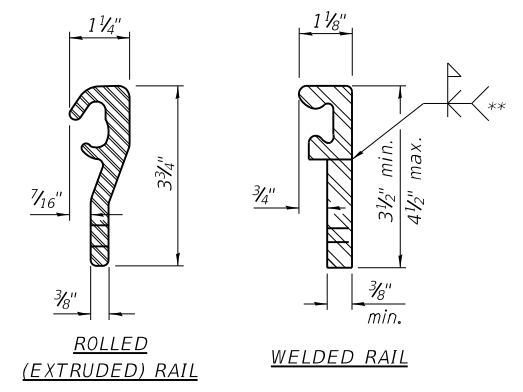
SHOWING ROLLED RAIL JOINT

* 5/8" Ø x 6" studs @ 6" cts. (alternate angled/bent studs with horizontal studs)

3/8" Ø threaded rods in 7/16" Ø holes at ±4'-0" cts. for holding the proper joint opening based on the temperature during the deck pour. Place to miss studs. All rods shall be burned, or sawed off flush with the plates after concrete is set.

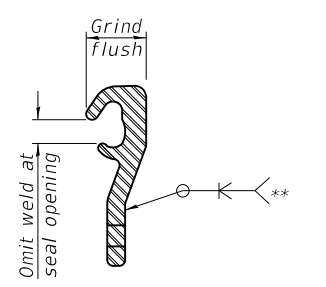


SHOWING WELDED RAIL JOINT



LOCKING EDGE RAILS

** Back gouge not required if complete joint penetration is verified by mock-up.



LOCKING EDGE RAIL SPLICE

The inside of the locking edge rail groove shall be free of weld residue. Rolled rail shown, welded rail similar.

SECTION A-A

* Granular or solid flux filled headed studs conforming to Article 1006.32 of the Std. Specs., automatically end welded.

BILL OF MATERIAL

Item	Unit	Total
Preformed Joint Strip Seal	Foot	172

MODEL: \$MODELNAMES
 FILE NAME: \$FILES

EJ-SS

8-11-17



JOB =	2480.5
FILE NAME =	\$FILESS
PLOT DATE =	\$DATES

DESIGNED -	AAN	REVISED -	
CHECKED -	MDC	REVISED -	
DRAWN -	SJS	REVISED -	
CHECKED -	MDC	REVISED -	

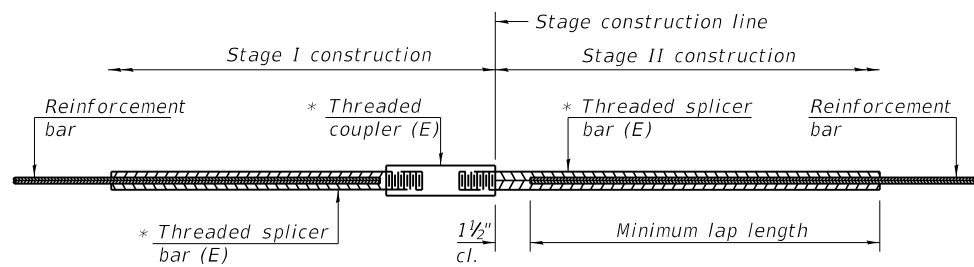
STATE OF ILLINOIS
 DEPARTMENT OF TRANSPORTATION

PREFORMED JOINT STRIP SEAL
 STRUCTURE NO. 015-0015, 0016

SHEET 8 OF 9 SHEETS

F.A.P. RTE.	SECTION	COUNTY	TOTAL SHEETS	SHEET NO.
91	D-7 BRIDGE REPAIRS 2020-4	COLES	25	16
ILLINOIS			FED. AID PROJECT	

CONTRACT NO. 74928

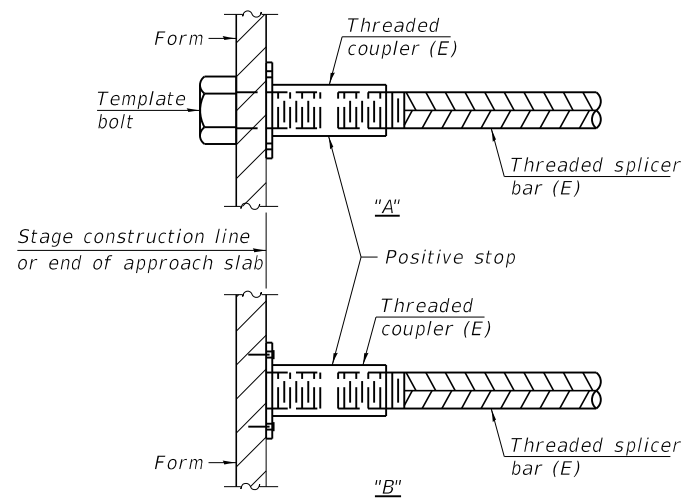


STANDARD BAR SPLICER ASSEMBLY

Threaded splicer bar length = min. lap length + 1 1/2" + thread length

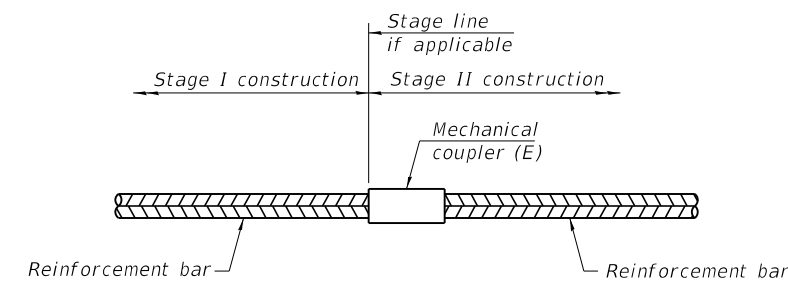
* Epoxy not required on Bar Splicer Assembly components used in conjunction with black bars.

Location	Bar size	No. assemblies required	Minimum lap length
Deck	5	24	3'-6"
Hatch Block	6	16	4'-0"



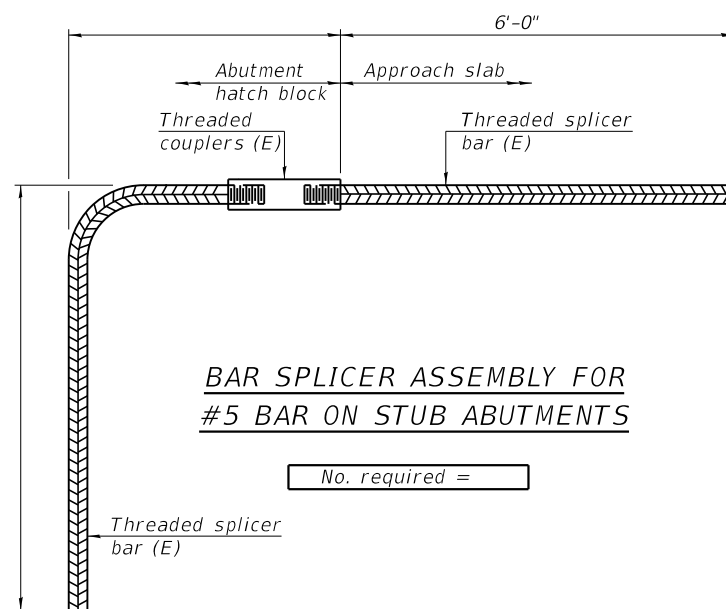
INSTALLATION AND SETTING METHODS

"A" : Set bar splicer assembly by means of a template bolt.
 "B" : Set bar splicer assembly by nailing to wood forms or cementing to steel forms.
 (E) : Indicates epoxy coating.



STANDARD MECHANICAL SPLICER

Location	Bar size	No. assemblies required



BAR SPLICER ASSEMBLY FOR #5 BAR ON STUB ABUTMENTS

No. required =

NOTES

Splicer bars shall be deformed with threaded ends and have a minimum 60 ksi yield strength.
 All reinforcement shall be lapped and tied to the splicer bars.
 Bar splicer assemblies shall be epoxy coated according to the requirements for reinforcement bars. See Section 508 of the Standard Specifications.
 See approved list of bar splicer assemblies and mechanical splicers for alternatives.

MODEL: \$MODELNAME\$
 FILE NAME: \$FILES\$

BSD-1

2-17-2017

CEC Cummins Engineering Corporation
 Civil and Structural Engineering

JOB =	2480.5
FILE NAME =	\$FILES\$
PLOT DATE =	\$DATES\$

DESIGNED -	AAN	REVISED -	
CHECKED -	MDC	REVISED -	
DRAWN -	SJS	REVISED -	
CHECKED -	MDC	REVISED -	

STATE OF ILLINOIS
 DEPARTMENT OF TRANSPORTATION

BAR SPLICER ASSEMBLY AND MECHANICAL SPLICER DETAILS
 STRUCTURE NO. 015-0015, 0016

SHEET 9 OF 9 SHEETS

F.A.P. RTE.	SECTION	COUNTY	TOTAL SHEETS	SHEET NO.
91	D-7 BRIDGE REPAIRS 2020-4	COLES	25	17
ILLINOIS FED. AID PROJECT			CONTRACT NO. 74928	

Existing Structures: S.N. 015-0017 and S.N. 015-0018 were originally constructed in 1961 as F.A. Rte. 17, Section 51B & 51F. The decks were removed and replaced in 1996 and bearings were replaced in 1989. Each structure consists of a three span steel plate girder superstructure with floor beams on reinforced concrete piers on spread footings and pile supported vaulted abutments. The existing structures are 300'-6" Bk. to Bk. of approach bents, 36'-9" O. to O. of deck and 33'-7" Fc. to Fc. of parapets. Traffic is to be maintained under staged construction.

SCOPE OF WORK

1. Remove and replace expansion joints at both abutments.
2. Repair approach slabs.

GENERAL NOTES

Reinforcement bars designated (E) shall be epoxy coated. Plan dimensions and details relative to existing plans are subject to nominal construction variations. The Contractor shall field verify existing dimensions and details affecting new construction and make necessary approved adjustments prior to construction or ordering of materials. Such variations shall not be cause for additional compensation for a change in scope of the work, however, the Contractor will be paid for the quantity actually furnished at the unit price bid for the work.

Protective coat shall be applied to areas of new concrete. Joint openings shall be adjusted according to Article 520.04 of the Standard Specifications when the deck is poured at an ambient temperature other than 50°F.

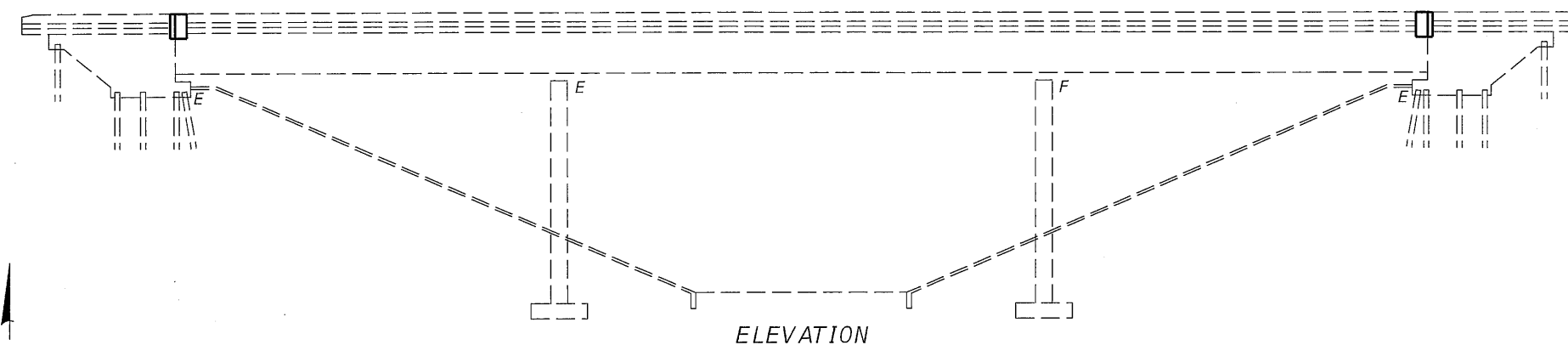
Prior to pouring the new concrete deck, all heavy or loose rust, loose mill scale, and other loose or potentially detrimental foreign material shall be removed from the surfaces in contact with new concrete. Tightly adhered paint may remain unless otherwise noted. Removal shall be accomplished by methods that will not damage the steel and the cost will be included with Concrete Removal.

Areas of deck repairs shown are estimated. The engineer shall show actual locations of deck repairs on as-built plans. The deck surface shall have its final finish tined according to Article 420.09(e)(1) of the Standard Specifications. Cost included with Concrete Superstructure.

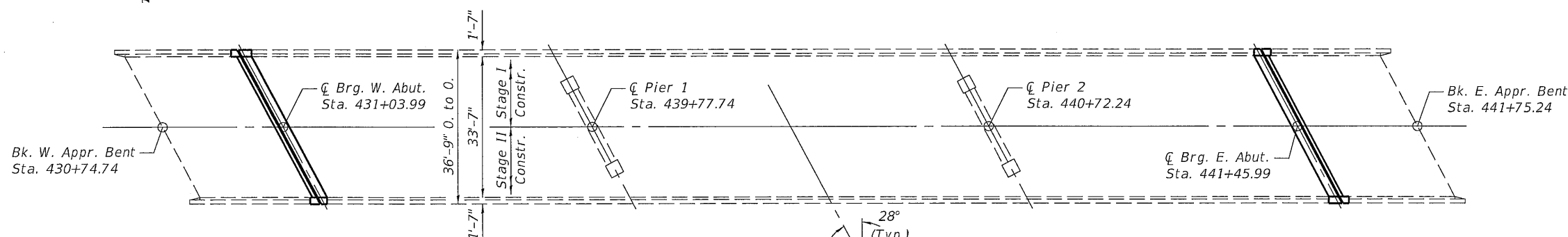
TOTAL BILL OF MATERIAL

ITEM	UNIT	TOTAL
Concrete Removal	Cu. Yd.	17.7
Concrete Superstructure	Cu. Yd.	17.2
Reinforcement Bars, Epoxy Coated	Pound	3140
Protective Coat	Sq. Yd.	62
Preformed Joint Strip Seal	Foot	162
Approach Slab Repair (Partial Depth)	Sq. Yd.	3
Bar Splicers	Each	40
Temporary Shoring and Cribbing	L. Sum	1

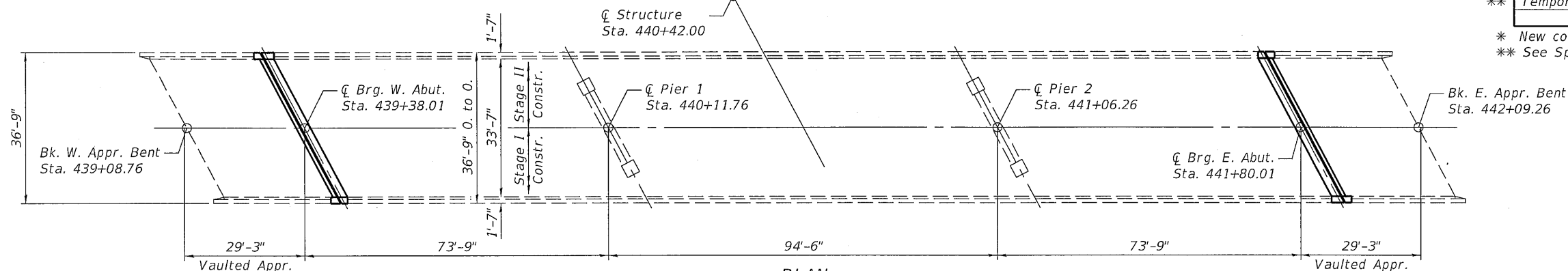
* New concrete at joints only.
** See Special Provisions



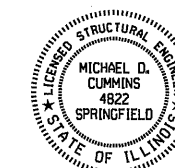
ELEVATION



28° (Typ.)



PLAN



Michael D. Cummins 1/31/20
(Expires 11/30/20)

GENERAL PLAN AND ELEVATION
F.A.P. RTE. 91 (IL 16)
OVER RILEY CREEK
SECTION D-7 BRIDGE REPAIRS 2020-4
COLES COUNTY
STA 440+42
STRUCTURE NO. 015-0017 (WB), 0018 (EB)

MODEL: Default
FILE NAME: 015-0017-0018_74910_00_GPE.dgn

CEC Cummins Engineering Corporation
Civil and Structural Engineering

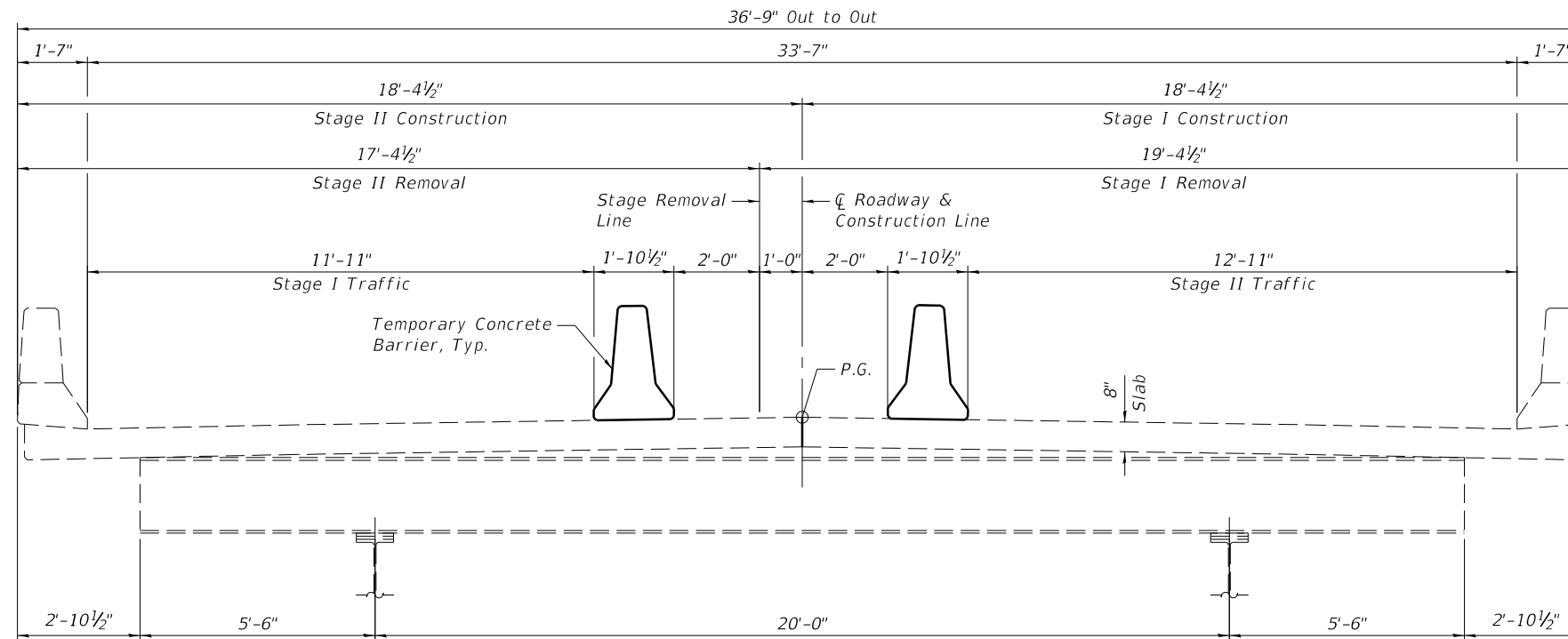
JOB # = 2480.5	DESIGNED - AAN	REVISED -
FILE NAME = 015-0017-0018_74910_00_GPE.dgn	CHECKED - MDC	REVISED -
PLOT DATE = 1/30/2020	DRAWN - SJS	REVISED -
	CHECKED - MDC	REVISED -

STATE OF ILLINOIS
DEPARTMENT OF TRANSPORTATION

GENERAL PLAN AND ELEVATION
STRUCTURE NO. 015-0017, 0018

SHEET 1 OF 8 SHEETS

F.A.P. RTE.	SECTION	COUNTY	TOTAL SHEETS	SHEET NO.
91	D-7 BRIDGE REPAIRS 2020-4	COLES	25	18
ILLINOIS FED. AID PROJECT			CONTRACT NO. 74928	



CROSS SECTION
 (SN 015-0017 Westbound looking West)
 (SN 015-0018 Eastbound Looking East)

MODEL: \$MODELNAME\$
 FILE NAME: \$FILEL\$

CEC Cummins
 Engineering
 Corporation
 Civil and Structural Engineering

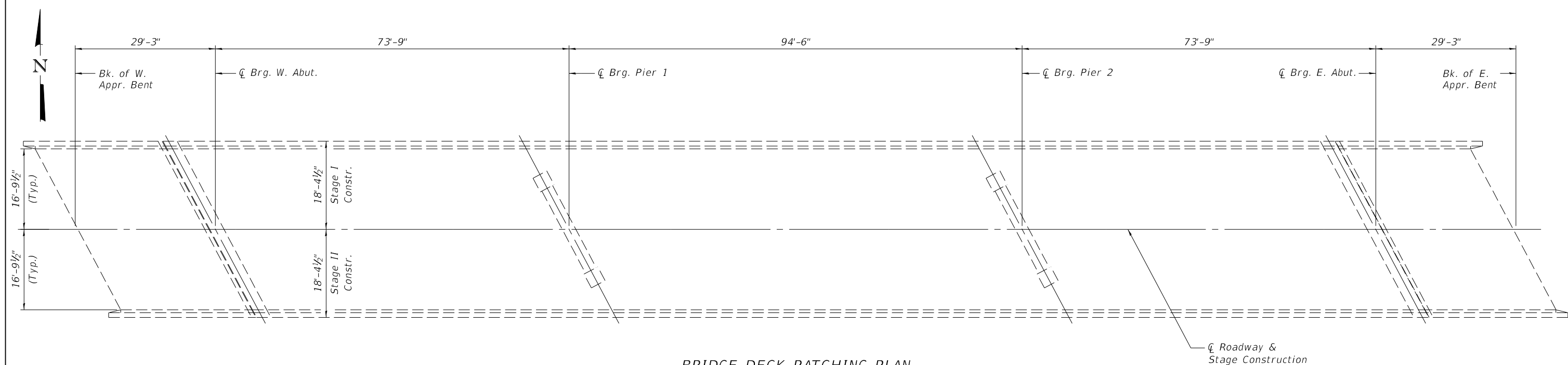
JOB = 2480.5	DESIGNED - AAN	REVISED -
FILE NAME = \$FILEL\$	CHECKED - MDC	REVISED -
PLOT DATE = \$DATE\$	DRAWN - SJS	REVISED -
	CHECKED - MDC	REVISED -

**STATE OF ILLINOIS
 DEPARTMENT OF TRANSPORTATION**

**STAGE CONSTRUCTION DETAIL
 STRUCTURE NO. 015-0017, 0018**

SHEET 2 OF 8 SHEETS

F.A.P. RTE.	SECTION	COUNTY	TOTAL SHEETS	SHEET NO.
91	D-7 BRIDGE REPAIRS 2020-4	COLES	25	19
			CONTRACT NO. 74928	
			ILLINOIS FED. AID PROJECT	



BRIDGE DECK PATCHING PLAN

(SN 015-0017 - WB)

PATCH NO.	SIZE	DECK SLAB REPAIR (PARTIAL DEPTH)	APPROACH SLAB REPAIR (PARTIAL DEPTH)	APPROACH SLAB REPAIR (FULL DEPTH)	
		SQ. YD.	SQ. YD.	SQ. YD.	
TOTAL					

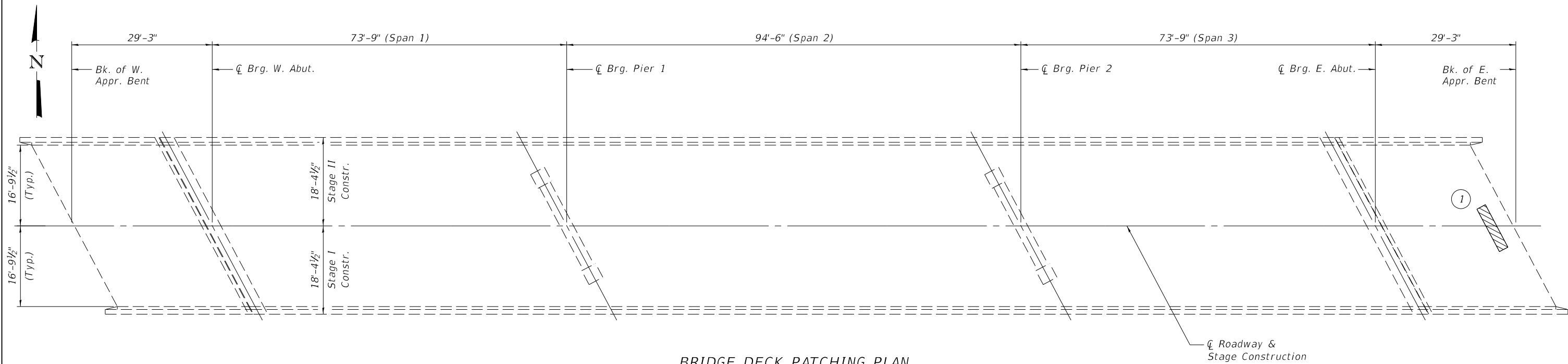
PATCH NO.	SIZE	DECK SLAB REPAIR (PARTIAL DEPTH)	APPROACH SLAB REPAIR (PARTIAL DEPTH)	APPROACH SLAB REPAIR (FULL DEPTH)	
		SQ. YD.	SQ. YD.	SQ. YD.	
TOTAL					

LEGEND

- Approach Slab Repair (Partial Depth)
- Approach Slab Repair (Full Depth)
- Deck Slab Repair (Partial Depth)

BILL OF MATERIAL

Item	Unit	Total
Approach Slab Repair (Partial Depth)	Sq. Yd.	
Approach Slab Repair (Full Depth)	Sq. Yd.	
Deck Slab Repair (Partial Depth)	Sq. Yd.	



BRIDGE DECK PATCHING PLAN
(SN 015-0018 - EB)

PATCH NO.	SIZE	DECK SLAB REPAIR (PARTIAL DEPTH)	APPROACH SLAB REPAIR (PARTIAL DEPTH)	APPROACH SLAB REPAIR (FULL DEPTH)	
		SQ. YD.	SQ. YD.	SQ. YD.	
1	10'x2'		2.22		
TOTAL			2.22		

PATCH NO.	SIZE	DECK SLAB REPAIR (PARTIAL DEPTH)	APPROACH SLAB REPAIR (PARTIAL DEPTH)	APPROACH SLAB REPAIR (FULL DEPTH)	
		SQ. YD.	SQ. YD.	SQ. YD.	
TOTAL					

LEGEND

- Approach Slab Repair (Partial Depth)
- Approach Slab Repair (Full Depth)
- Deck Slab Repair (Partial Depth)

BILL OF MATERIAL

Item	Unit	Total
Approach Slab Repair (Partial Depth)	Sq. Yd.	3
Approach Slab Repair (Full Depth)	Sq. Yd.	
Deck Slab Repair (Partial Depth)	Sq. Yd.	

MODEL: \$MODELNAMES
FILE NAME: \$FILES



JOB = 2480.5
FILE NAME = \$FILESS
PLOT DATE = \$DATES

DESIGNED - AAN
CHECKED - MDC
DRAWN - SJS
CHECKED - MDC

REVISED -
REVISED -
REVISED -
REVISED -

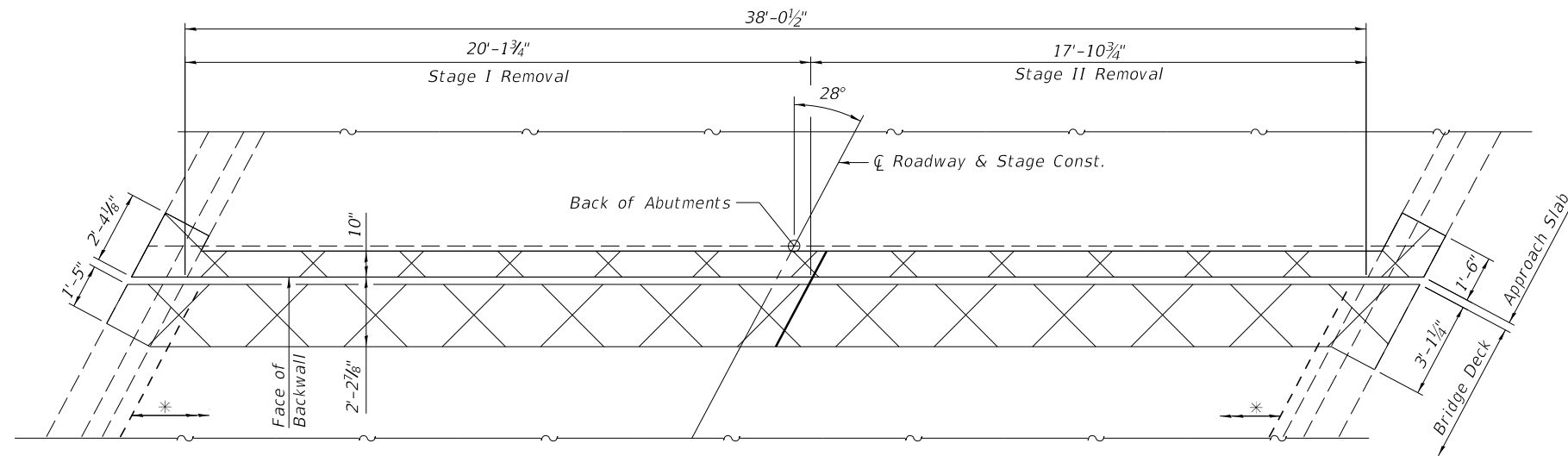
**STATE OF ILLINOIS
DEPARTMENT OF TRANSPORTATION**

**BRIDGE DECK PATCHING PLAN
STRUCTURE NO. 015-0018**

SHEET 4 OF 8 SHEETS

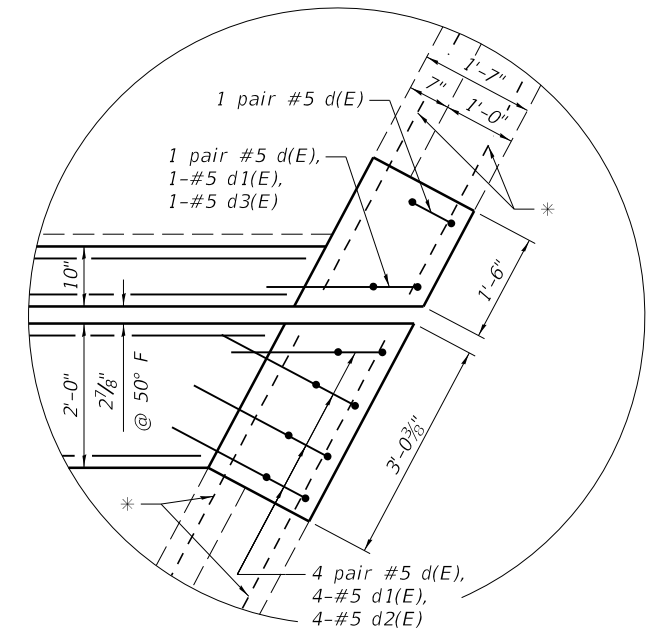
F.A.P. RTE.	SECTION	COUNTY	TOTAL SHEETS	SHEET NO.
91	D-7 BRIDGE REPAIRS 2020-4	COLES	25	21

ILLINOIS FED. AID PROJECT

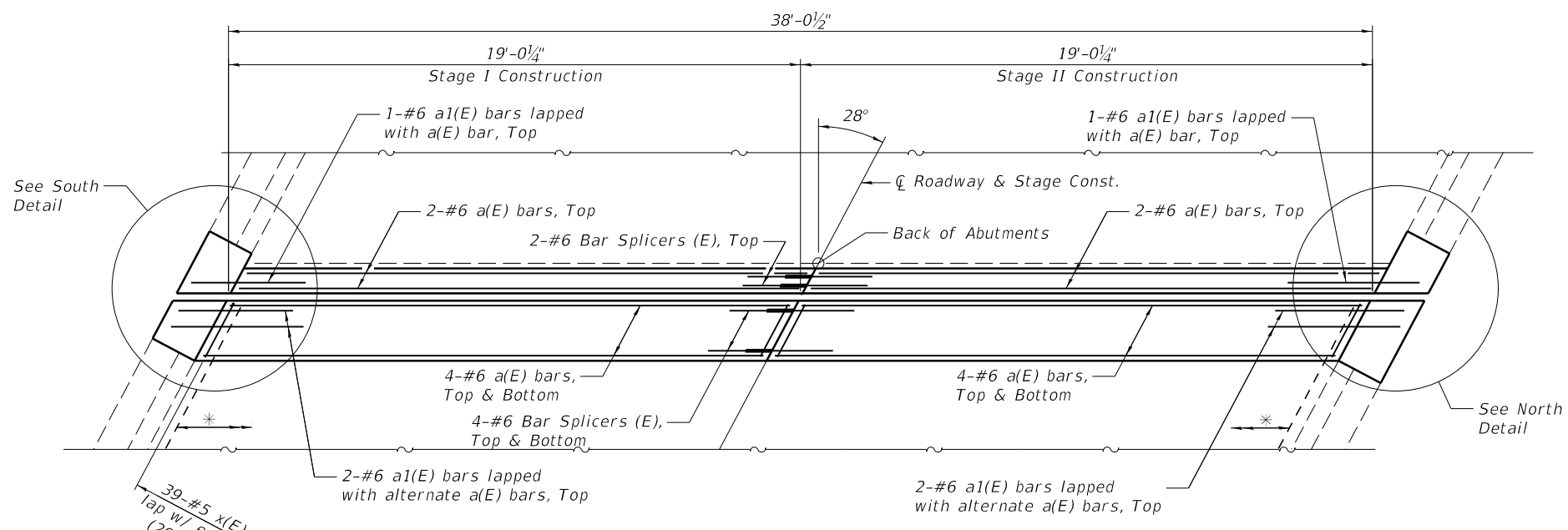
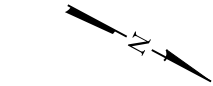


EXISTING PLAN AT EXPANSION JOINT
(E.B. Structure shown, W.B. Structure similar)

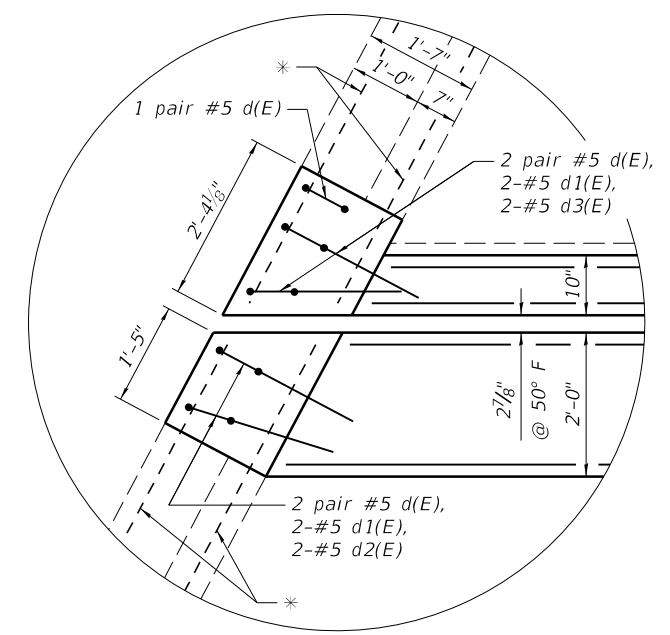
Note:
All removal dimensions shown shall be measured from the face of the backwall below the existing expansion joint opening.
Cross-hatched area indicates limits of Concrete Removal.



NORTH-DETAIL



PROPOSED PLAN AT EXPANSION JOINT
(E.B. Structure shown, W.B. Structure similar)



SOUTH-DETAIL

* Existing reinforcement shall be cleaned and incorporated into the new construction. Cost included with Concrete Removal.

MODEL: \$MODELNAMES
FILE NAME: \$FILES



JOB =	2480.5
FILE NAME =	\$FILESS
PLOT DATE =	\$DATES

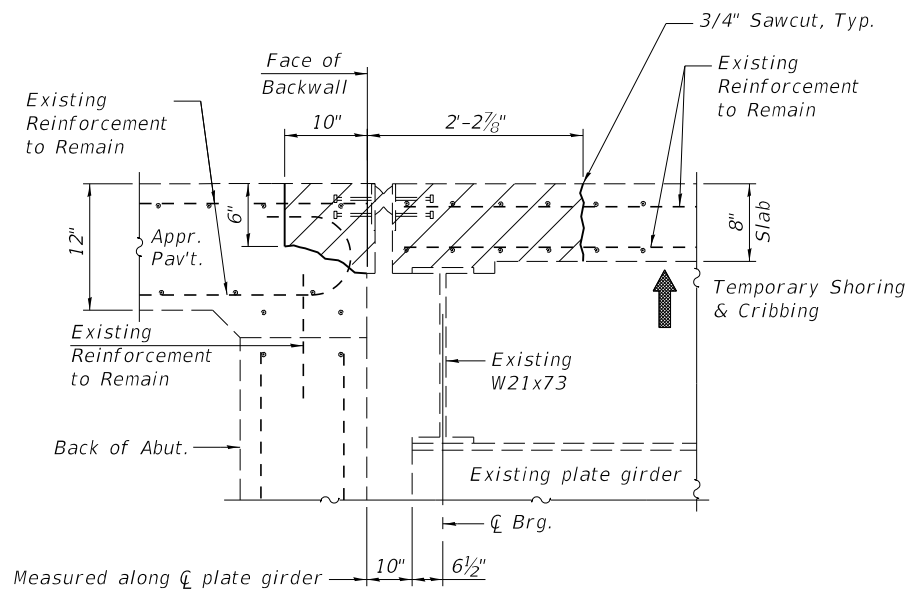
DESIGNED -	AAN	REVISED -	
CHECKED -	MDC	REVISED -	
DRAWN -	SJS	REVISED -	
CHECKED -	MDC	REVISED -	

STATE OF ILLINOIS
DEPARTMENT OF TRANSPORTATION

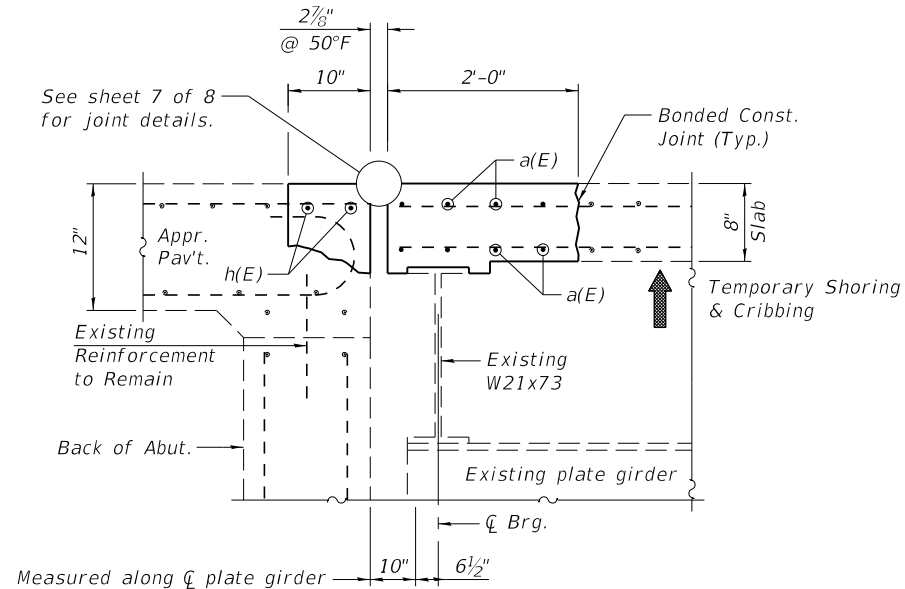
EXPANSION JOINT REPLACEMENT DETAILS
STRUCTURE NO. 015-0017, 0018

SHEET 5 OF 8 SHEETS

F.A.P. RTE.	SECTION	COUNTY	TOTAL SHEETS	SHEET NO.
91	D-7 BRIDGE REPAIRS 2020-4	COLES	25	22
CONTRACT NO. 74928				
ILLINOIS FED. AID PROJECT				



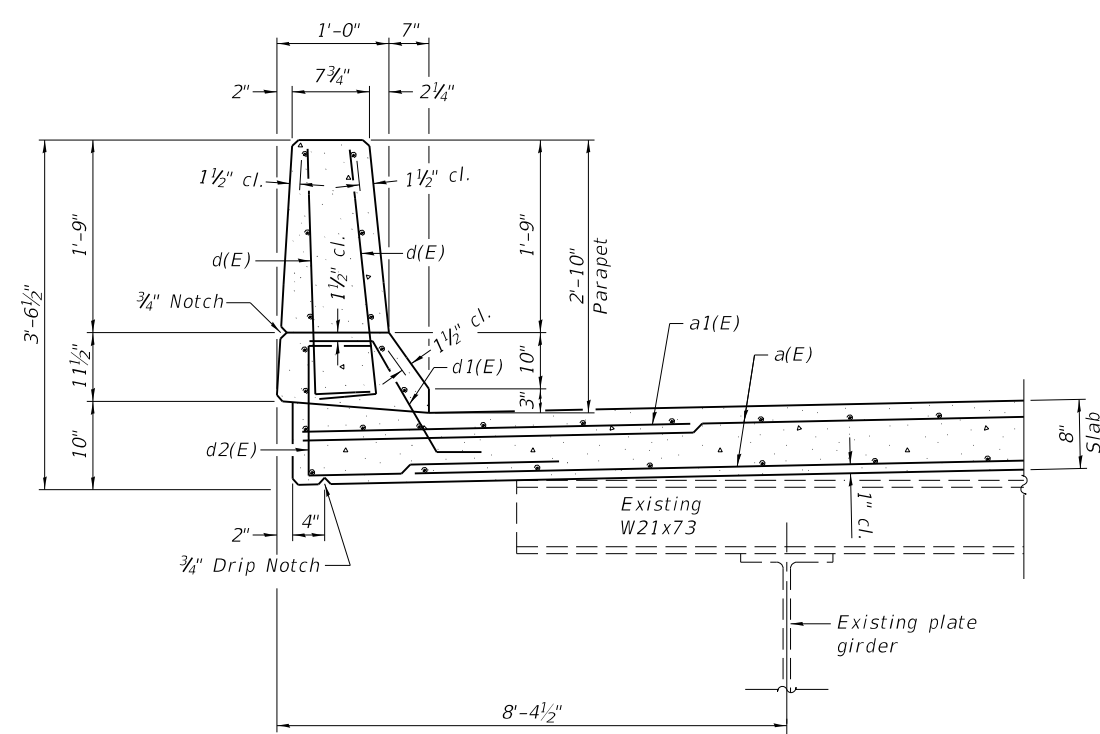
SECTION THRU JOINT
(Showing Removal)
(Horiz. Dim. at Rt. L's)



SECTION THRU JOINT
(Showing Proposed)
(Horiz. Dim. at Rt. L's)

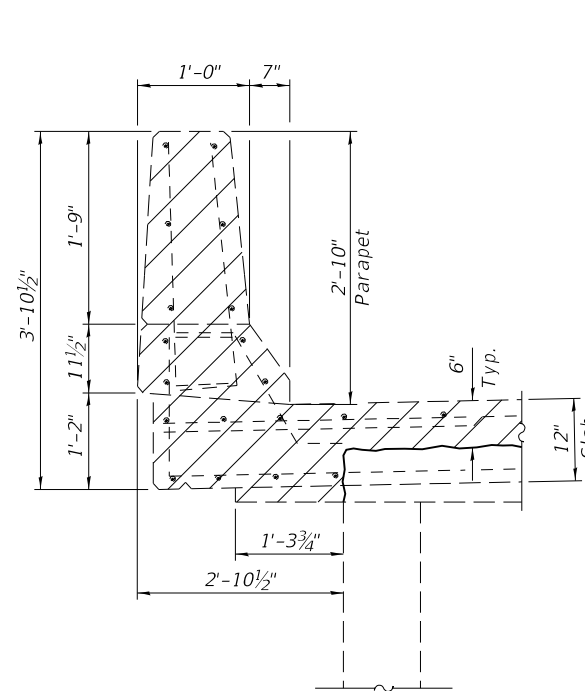
TEMPORARY SHORING AND CRIBBING

Location	Weight of deck to be supported
NW/SE corners of structures	29 kips
NW/SE corners of structures	12 kips

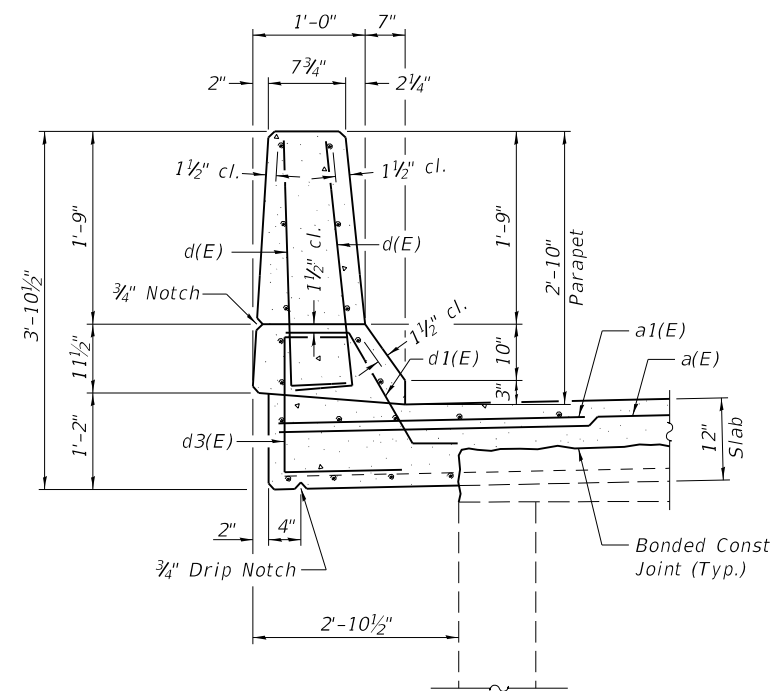


SECTION THRU PARAPET

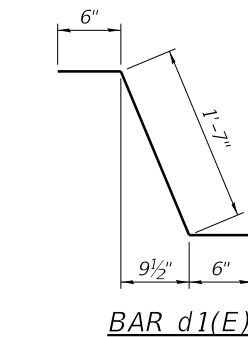
Note:
All removal dimensions shown shall be measured from the face of the backwall below the existing expansion joint opening.
Proposed expansion joints shall be constructed flush with the face of backwall.



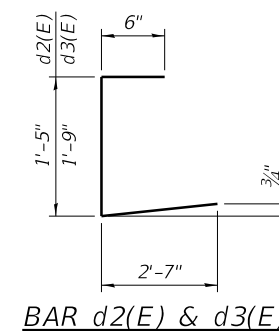
SECTION THRU APPROACH PARAPET
(Showing Removal)



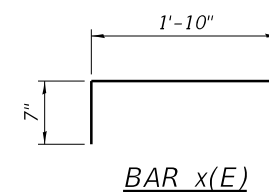
SECTION THRU APPROACH PARAPET
(Showing Proposed)



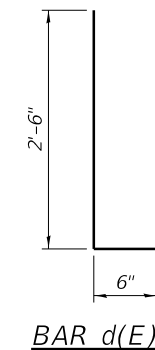
BAR d1(E)



BAR d2(E) & d3(E)



BAR x(E)



BAR d(E)

TWO SUPERSTRUCTURES
BILL OF MATERIAL

Bar	No.	Size	Length	Shape	
a(E)	32	#5	20'-8"	—	
a1(E)	16	#6	6'-6"	—	
d(E)	24	#5	3'-0"	—	
d1(E)	24	#5	2'-7"	┘	
d2(E)	24	#4	3'-0"	┌	
d3(E)	24	#4	4'-6"	┌	
h(E)	16	#6	20'-0"	—	
x(E)	136	#5	2'-5"	┘	
Reinforcement Bars, Epoxy Coated				Pound	3140
Concrete Superstructure				Cu. Yd.	17.2
Concrete Removal				Cu. Yd.	17.7

Notes:
Hatched areas indicate limits of Concrete Removal.

Existing reinforcement to remain shall be cleaned and incorporated into the new construction. Cost included with Concrete Removal.

Any reinforcement bars that are damaged during concrete removal shall be replaced with an approved bar splicer or anchorage system. Cost included with Concrete removal.

MODEL: \$MODELNAME\$
FILE NAME: \$FILES\$

CEC Cummins
Engineering
Corporation
Civil and Structural Engineering

JOB = 2480.5
FILE NAME = \$FILES\$
PLOT DATE = \$DATES\$

DESIGNED - AAN
CHECKED - MDC
DRAWN - SJS
CHECKED - MDC

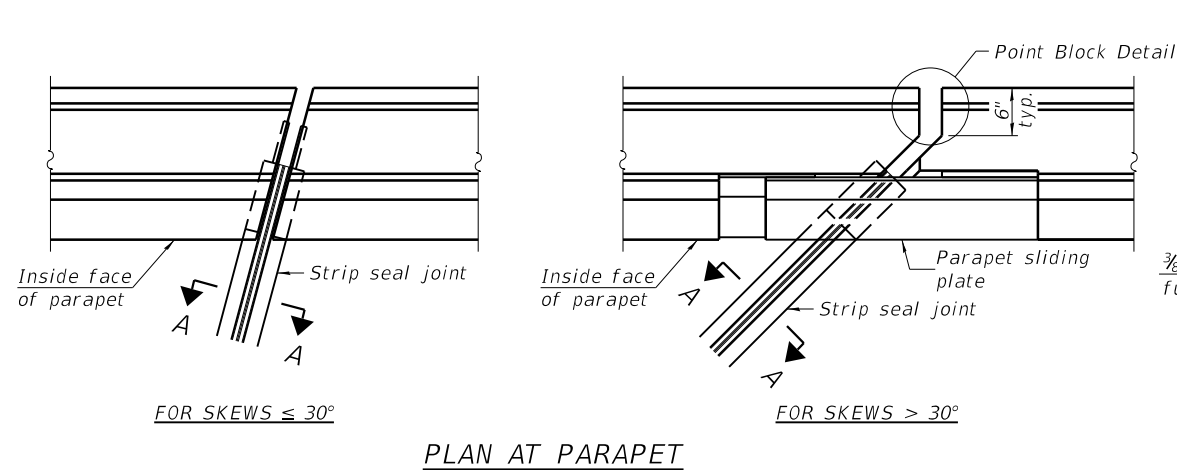
REVISED -
REVISED -
REVISED -
REVISED -

STATE OF ILLINOIS
DEPARTMENT OF TRANSPORTATION

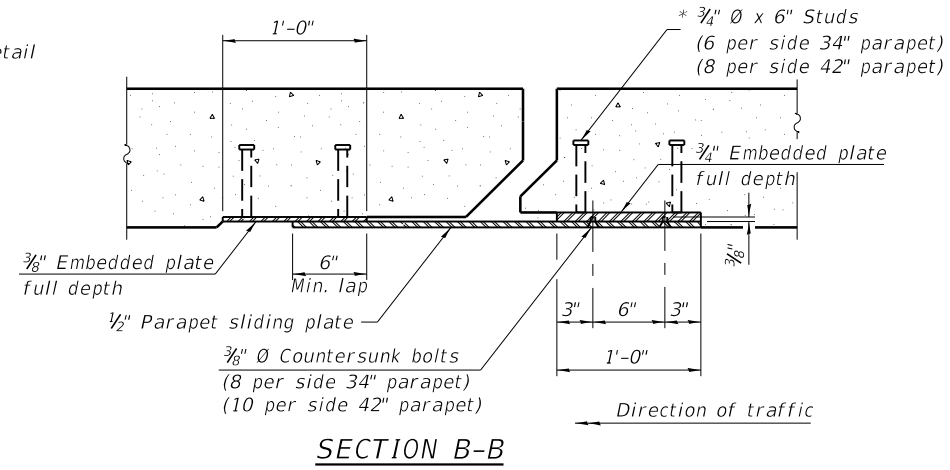
JOINT REPLACEMENT DETAILS
STRUCTURE NO. 015-0017, 0018

SHEET 6 OF 8 SHEETS

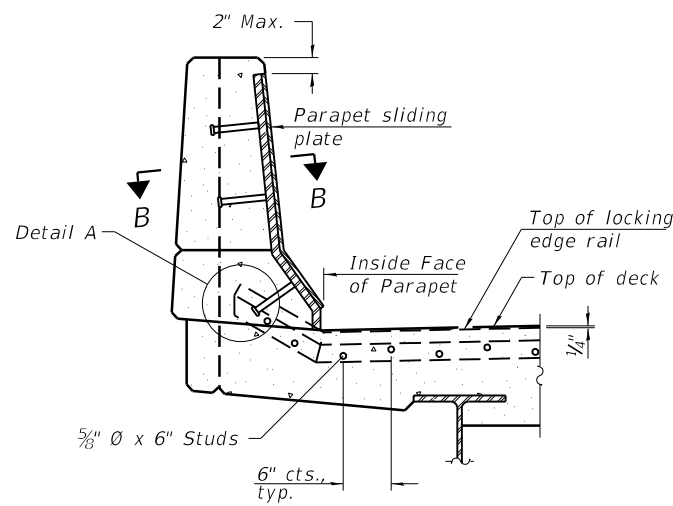
F.A.P. RTE.	SECTION	COUNTY	TOTAL SHEETS	SHEET NO.
91	D-7 BRIDGE REPAIRS 2020-4	COLES	25	23
CONTRACT NO. 74928				
ILLINOIS FED. AID PROJECT				



PLAN AT PARAPET

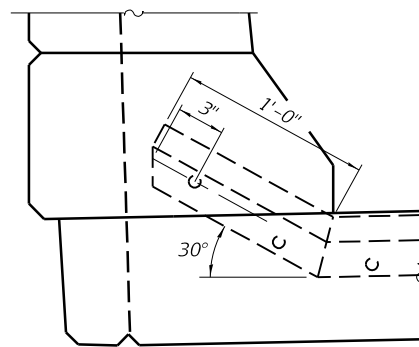


SECTION B-B

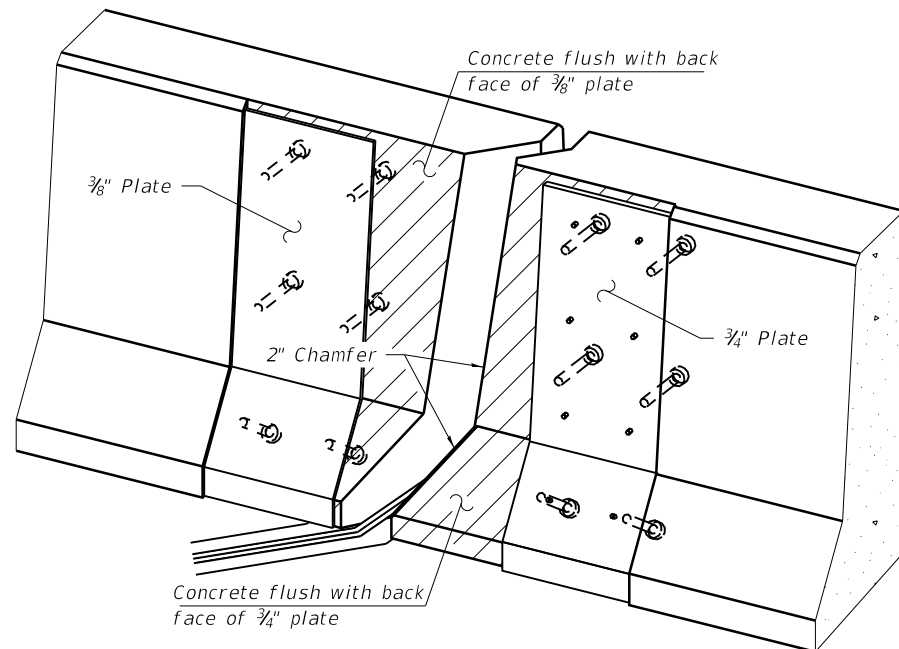


ELEVATION AT PARAPET

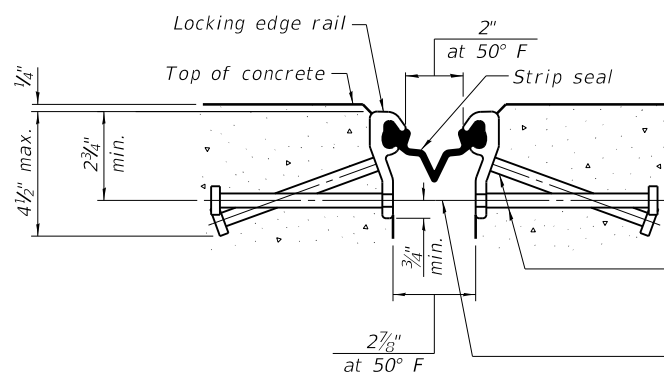
(Skews > 30° shown. Skews ≤ 30° similar except as shown in plan view.)



DETAIL A



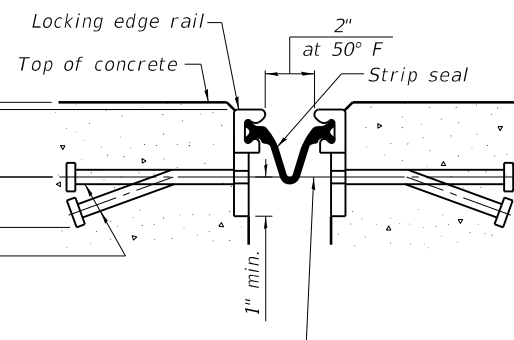
TRIMETRIC VIEW
(Showing embedded plates only)



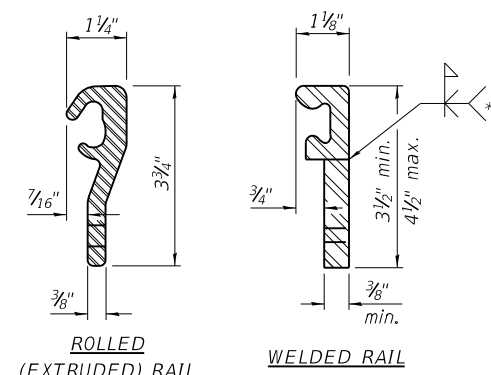
SHOWING ROLLED RAIL JOINT

* 5/8" Ø x 6" studs @ 6" cts. (alternate angled/bent studs with horizontal studs)

3/8" Ø threaded rods in 7/16" Ø holes at ±4'-0" cts. for holding the proper joint opening based on the temperature during the deck pour. Place to miss studs. All rods shall be burned, or sawed off flush with the plates after concrete is set.

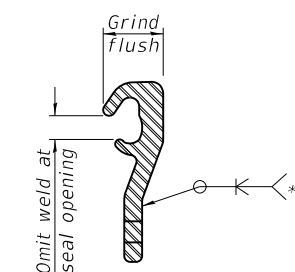


SHOWING WELDED RAIL JOINT



LOCKING EDGE RAILS

** Back gouge not required if complete joint penetration is verified by mock-up.



LOCKING EDGE RAIL SPLICE

The inside of the locking edge rail groove shall be free of weld residue. Rolled rail shown, welded rail similar.

BILL OF MATERIAL

Item	Unit	Total
Preformed Joint Strip Seal	Foot	162

Notes:
 The strip seal shall be made continuous and shall have a minimum thickness of 1/4". The configuration of the strip seal shall match the configuration of the locking edge rails. Open or "webbed" strip seal gland configurations are not permitted. The gland shall be sized for a maximum rated movement of 4 inches.
 The locking edge rails depicted are configured for typical applications and are conceptual only. The actual configuration of the locking edge rails and matching strip seal may vary from manufacturer to manufacturer provided they fit the application and meet the minimum anchorage shown. Flanged edge rails, however, will not be allowed. Locking edge rails may exceed the 4 1/2" maximum depth provided the anchorage system is revised according to the manufacturer's recommendation.
 The manufacturer's recommended installation methods shall be followed.
 All steel components shall be galvanized after fabrication according to Article 520.03 of the Standard Specifications.
 The Maximum space between locking edge rail segments shall be 3/16" and sealed with a suitable sealant; however, any rail joint within 10' measured perpendicular to the face of the curb or parapet shall be welded as shown in the locking edge rail splice detail.
 Cost of parapet sliding plates, embedded plates, and anchorage studs included with Preformed Joint Strip Seal.
 34" F-shape barrier shown, 42" F-shape similar as noted.
 The concrete opening below the strip seal will vary based on the locking edge rail chosen by the Contractor. Deck and parapet lengths shown elsewhere in the plans are dimensioned to the concrete opening, not the joint opening, and are based on the rolled locking edge rail. If the Contractor elects to use a different locking edge rail, dimensional adjustments may be required. One exception to this would be the strip seal joint at the end of the precast bridge approach slab. For these cases the pavement connector length shall be adjusted, not the length of the bridge approach slab.

MODEL: \$MODELNAMES
 FILE NAME: \$FILES

EJ-SS

8-11-17

CEC Cummins
 Engineering
 Corporation
 Civil and Structural Engineering

JOB = 2480.5
 FILE NAME = \$FILES\$
 PLOT DATE = \$DATES\$

DESIGNED - AAN
 CHECKED - MDC
 DRAWN - SJS
 CHECKED - MDC

REVISED -
 REVISED -
 REVISED -
 REVISED -

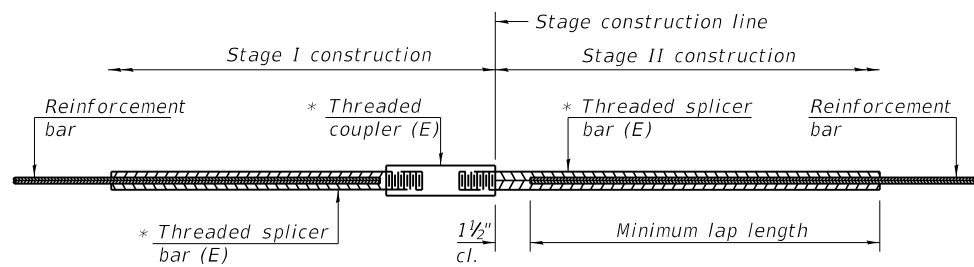
STATE OF ILLINOIS
 DEPARTMENT OF TRANSPORTATION

PREFORMED JOINT STRIP SEAL
 STRUCTURE NO. 015-0017, 0018

SHEET 7 OF 8 SHEETS

F.A.P. RTE.	SECTION	COUNTY	TOTAL SHEETS	SHEET NO.
91	D-7 BRIDGE REPAIRS 2020-4	COLES	25	24
CONTRACT NO. 74928				

ILLINOIS FED. AID PROJECT

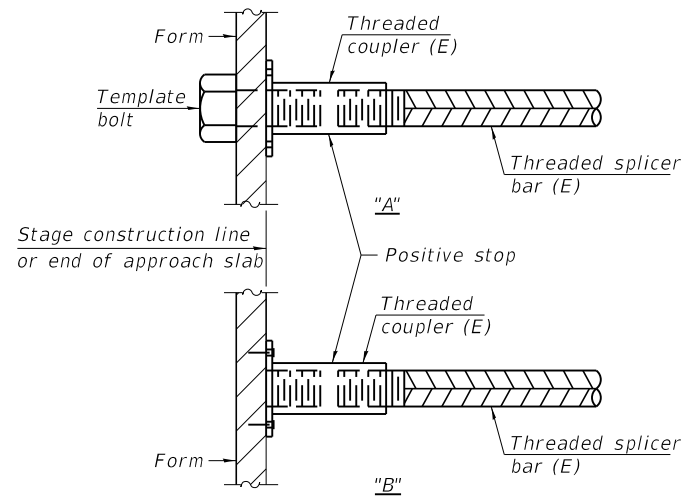


STANDARD BAR SPLICER ASSEMBLY

Threaded splicer bar length = min. lap length + 1 1/2" + thread length

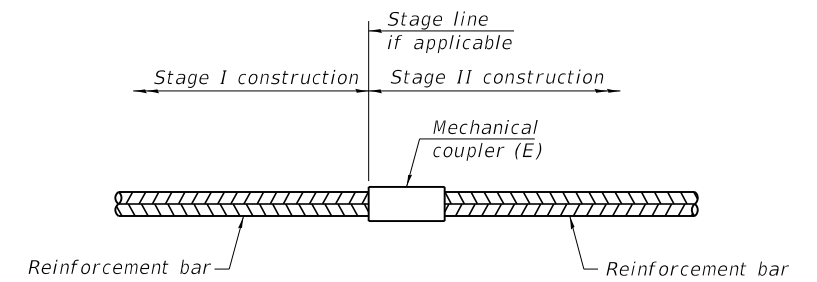
* Epoxy not required on Bar Splicer Assembly components used in conjunction with black bars.

Location	Bar size	No. assemblies required	Minimum lap length
Deck	5	32	3'-6"
Hatch Block	6	8	4'-0"



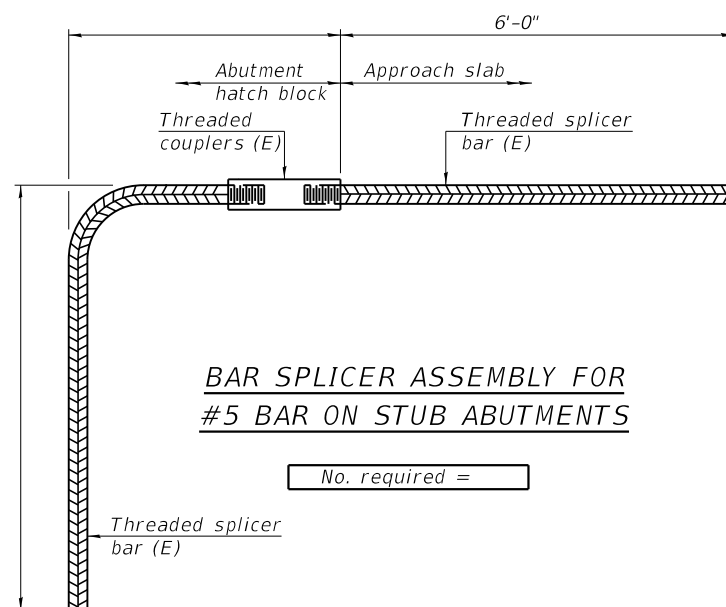
INSTALLATION AND SETTING METHODS

"A" : Set bar splicer assembly by means of a template bolt.
 "B" : Set bar splicer assembly by nailing to wood forms or cementing to steel forms.
 (E) : Indicates epoxy coating.



STANDARD MECHANICAL SPLICER

Location	Bar size	No. assemblies required



BAR SPLICER ASSEMBLY FOR #5 BAR ON STUB ABUTMENTS

No. required =

NOTES

Splicer bars shall be deformed with threaded ends and have a minimum 60 ksi yield strength.
 All reinforcement shall be lapped and tied to the splicer bars.
 Bar splicer assemblies shall be epoxy coated according to the requirements for reinforcement bars. See Section 508 of the Standard Specifications.
 See approved list of bar splicer assemblies and mechanical splicers for alternatives.

MODEL: \$MODELNAME\$
 FILE NAME: \$FILES\$

BSD-1

2-17-2017



JOB =	2480.5
FILE NAME =	\$FILES\$
PLOT DATE =	\$DATES\$

DESIGNED -	AAN	REVISED -	
CHECKED -	MDC	REVISED -	
DRAWN -	SJS	REVISED -	
CHECKED -	MDC	REVISED -	

STATE OF ILLINOIS
 DEPARTMENT OF TRANSPORTATION

BAR SPLICER ASSEMBLY AND MECHANICAL SPLICER DETAILS
 STRUCTURE NO. 015-0017, 0018

SHEET 8 OF 8 SHEETS

F.A.P. RTE.	SECTION	COUNTY	TOTAL SHEETS	SHEET NO.
91	D-7 BRIDGE REPAIRS 2020-4	COLES	25	25
ILLINOIS FED. AID PROJECT			CONTRACT NO. 74928	