

076

STATE OF ILLINOIS
DEPARTMENT OF TRANSPORTATION

F.A.P. NO.	SECTION	COUNTY	TOTAL SHEETS
824	13, 14, 14-IZ	PVMT PRSV CUMBERLAND	6
F.A.S. 1652	TRUCKS CONTRACT NO. 74967		

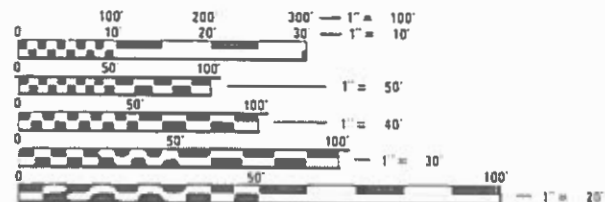
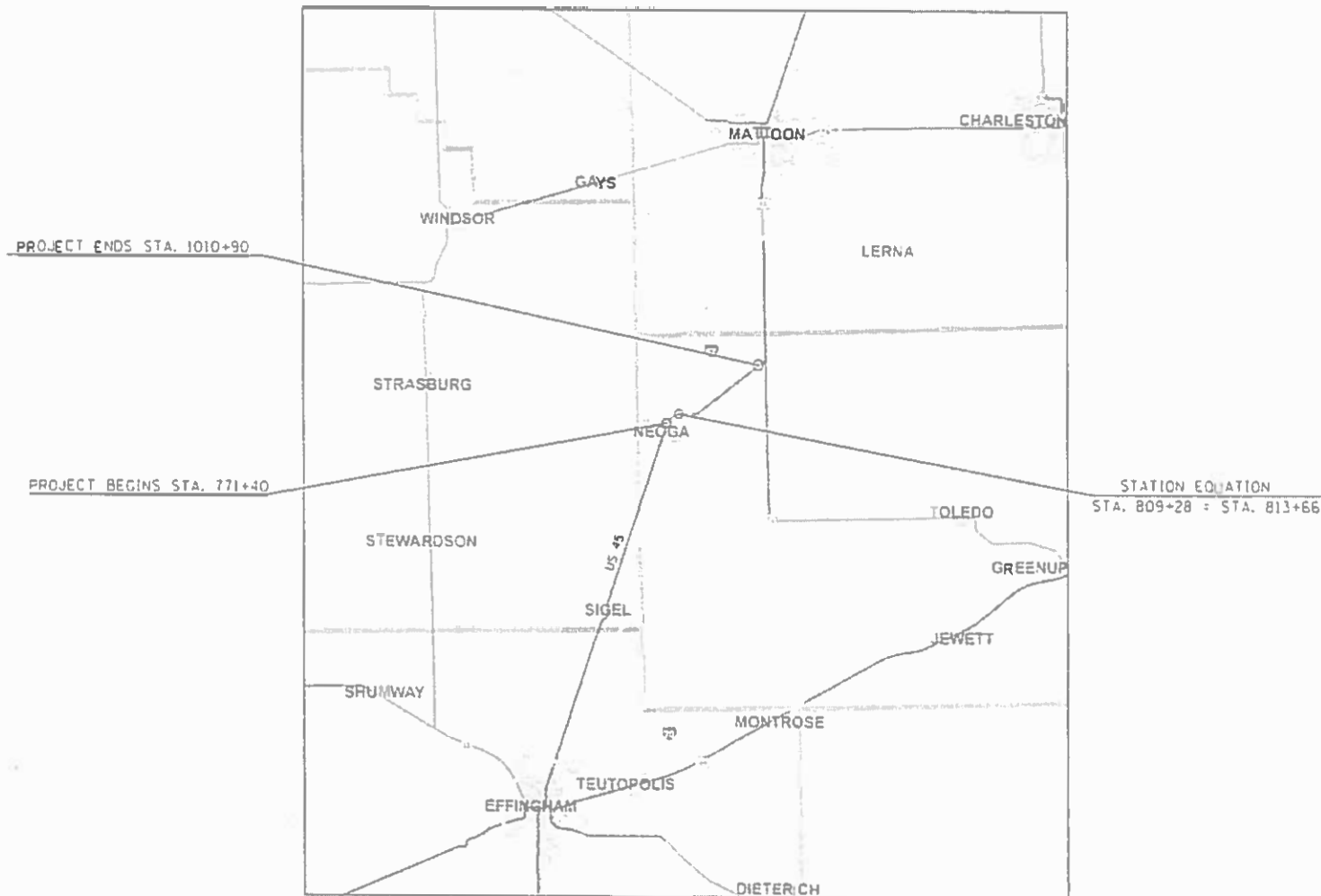
FOR INDEX OF SHEETS, SEE SHEET NO. 2

ADT (2017) = 3600

PROPOSED HIGHWAY PLANS

U.S. 45 (FAP 824, FAS 1652)
SECTION (13, 14, 14-IZ) PVMT PRSV
PROJECT STP-5VPI(894)
CRACK AND JOINT SEALING
CUMBERLAND COUNTY

C-97-047-20



FULL SIZE PLANS HAVE BEEN PREPARED USING STANDARD ENGINEERING SCALES. REDUCED SIZED PLANS WILL NOT CONFORM TO STANDARD SCALES. IN MAKING MEASUREMENTS ON REDUCED PLANS, THE ABOVE SCALES MAY BE USED.

J.U.L.I.E.
JOINT UTILITY LOCATION INFORMATION FOR EXCAVATORS
1-800-892-0123
OR 811

PROJECT ENGINEER BRIAN LEWIS
PROJECT MANAGER MINDY JANSEN

CONTRACT NO. 74967

GROSS LENGTH = 23,725 FT. = 4.49 MILE
NET LENGTH = 23,725 FT. = 4.49 MILE

STATE OF ILLINOIS
DEPARTMENT OF TRANSPORTATION

SUBMITTED JANUARY 21 20 20
Jeffrey P. Myrka REGIONAL ENGINEER

March 20 20 20
See CA. ETC ENGINEER OF DESIGN AND ENVIRONMENT

March 20 20 20
James J. Jan DIRECTOR OF HIGHWAYS PROJECT IMPLEMENTATION

PRINTED BY THE AUTHORITY
OF THE STATE OF ILLINOIS

GENERAL NOTES

THE WORK INCLUDED IN THIS SECTION CONSISTS OF ROUTING, CLEANING, AND SEALING OF THE CENTERLINE LONGITUDINAL JOINT IN THE EXISTING HOT-MIX ASPHALT PAVEMENT AND REPAINTING PAVEMENT MARKINGS.

WORK BEGINS ON U.S.ROUTE 45 0.2 MILES SOUTH OF THE ILL 121/US 45 INTERSECTION AND END AT 11TH STREET IN NEOGA.

PAINT PAVEMENT MARKINGS CONSIST OF 47,450 FEET OF WHITE AND 5,932 FEET OF YELLOW PAINT.

INDEX OF SHEETS

SHEET NO. ITEM

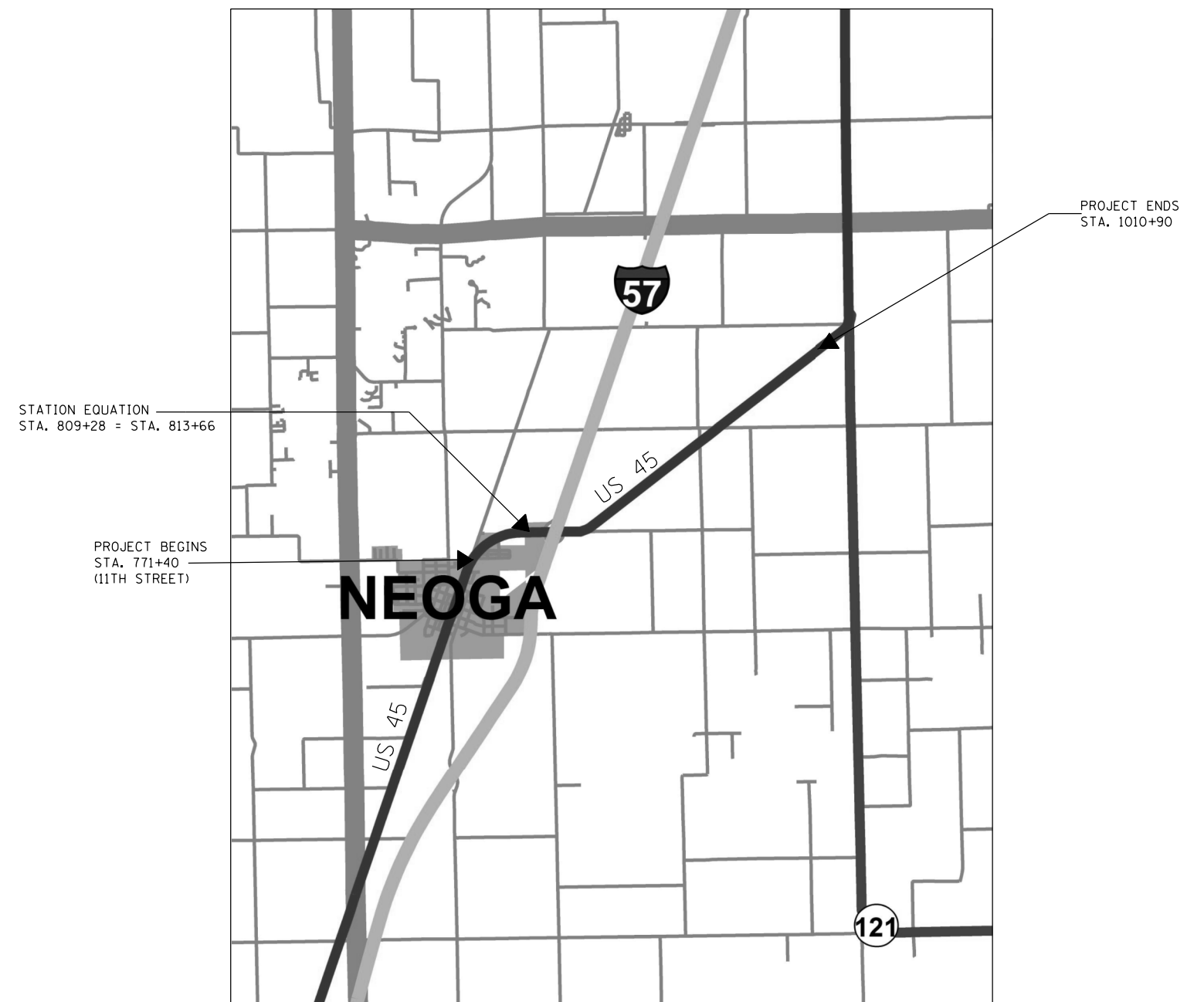
- 1 COVER SHEET
- 2 INDEX OF SHEETS, HIGHWAY STANDARDS & GENERAL NOTES
- 3 SUMMARY OF QUANTITIES
- 4 RECOVERY TIE POINTS
- 5 CRACK AND JOINT SEALING DETAIL
- 6 DISTRICT 7 PAVEMENT MARKING DETAIL

THE FOLLOWING STANDARDS ARE A PART OF THESE PLANS AND ARE INCLUDED FOLLOWING THE LAST NUMBERED SHEET OF THE PLANS.

STD. NO. DESCRIPTION

- 000001-07 STANDARD SYMBOLS, ABBREVIATIONS, AND PATTERNS
- 001006 DECIMAL OF AN INCH AND OF A FOOT
- 701006-05 OFF-ROAD OPERATIONS, 2L, 2W, 15' TO 24" FROM PAVEMENT EDGE
- 701306-04 LANE CLOSURE, 2L, 2W, SLOW MOVING OPERATIONS DAY ONLY, FOR SPEEDS >= 45 MPH
- 701311-03 LANE CLOSURE, 2L, 2W, MOVING OPERATIONS DAY ONLY
- 701901-08 TRAFFIC CONTROL DEVICES
- 780001-05 TYPICAL PAVEMENT MARKINGS

LOCATION MAP



MODEL: Default
 FILE: h:\mhc\p\pub\haronom.dwg
 PROJECT: 74967\CADD\DATA\CAD\hch\sheet\07\74967-sht-genote.dgn

USER NAME = steffemk	DESIGNED -	REVISED -
	DRAWN -	REVISED -
PLOT SCALE = 100,0000 ' / in.	CHECKED -	REVISED -
PLOT DATE = 1/22/2020	DATE -	REVISED -

**STATE OF ILLINOIS
DEPARTMENT OF TRANSPORTATION**

**GENERAL NOTES, INDEX OF SHEETS
LIST OF STANDARDS**

SCALE: SHEET OF SHEETS STA. TO STA.

F.A.P. RTE.	SECTION	COUNTY	TOTAL SHEETS	SHEET NO.
824	(13, 14, 14-IZ)PVMT PRSV	CUMBERLAND	6	2
*F.A.S. 1652		CONTRACT NO. 74967		
ILLINOIS FED. AID PROJECT				

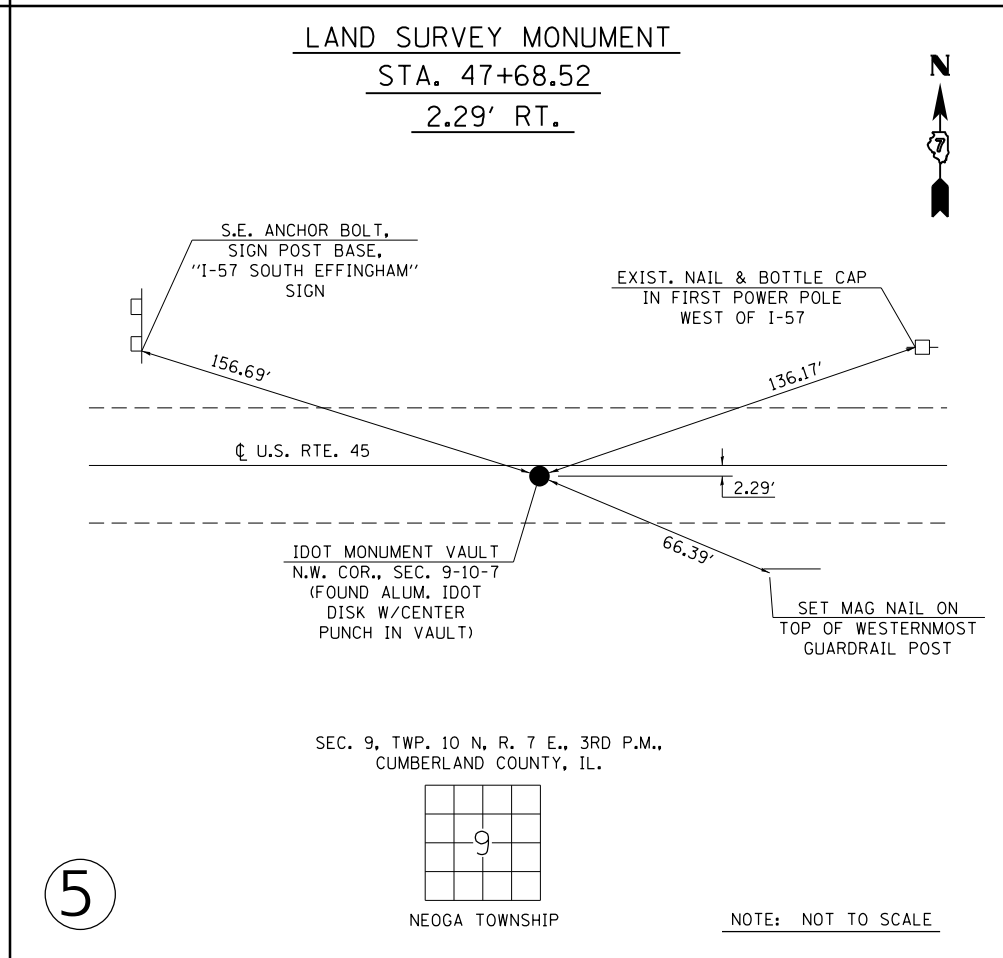
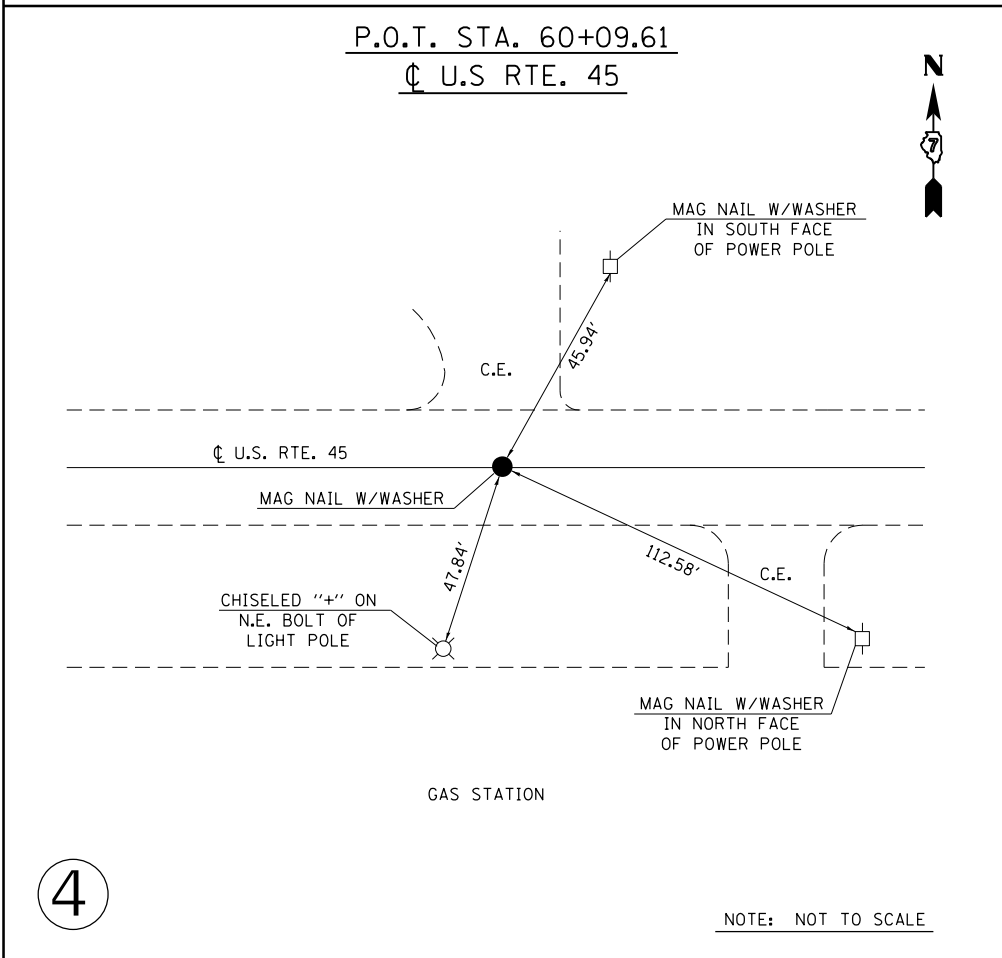
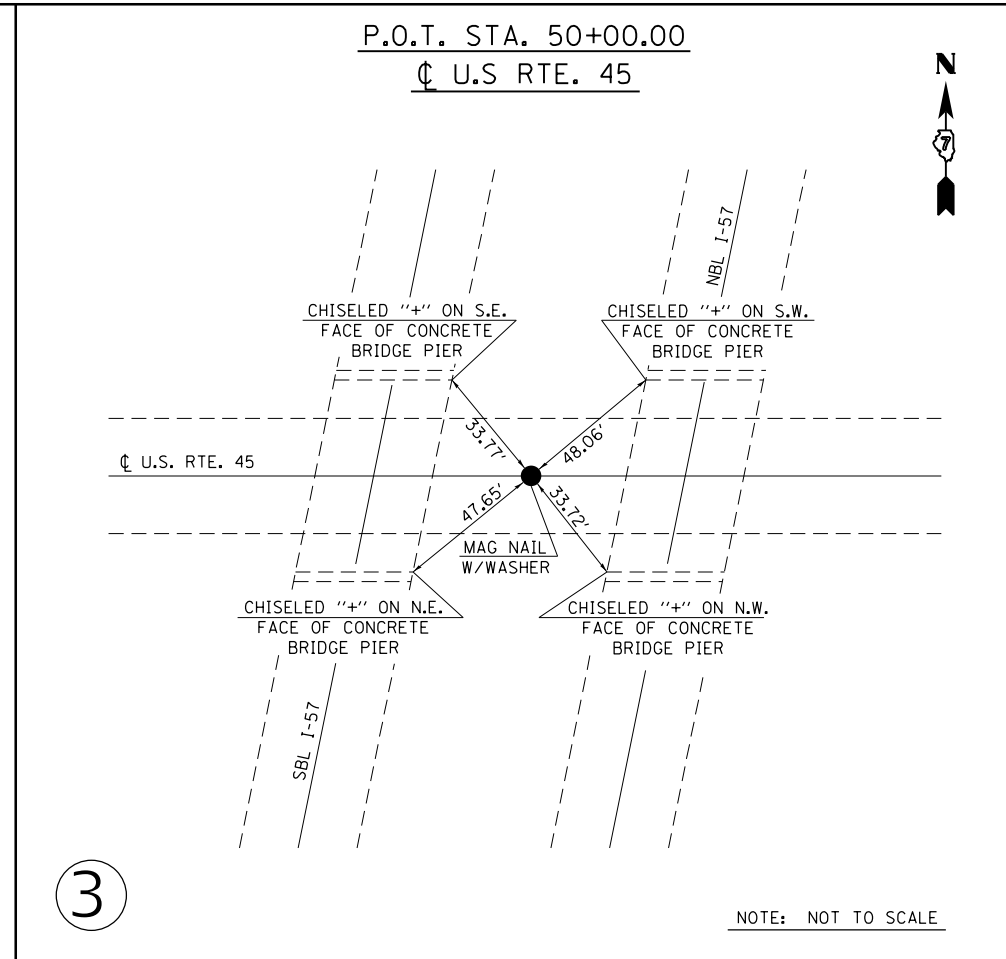
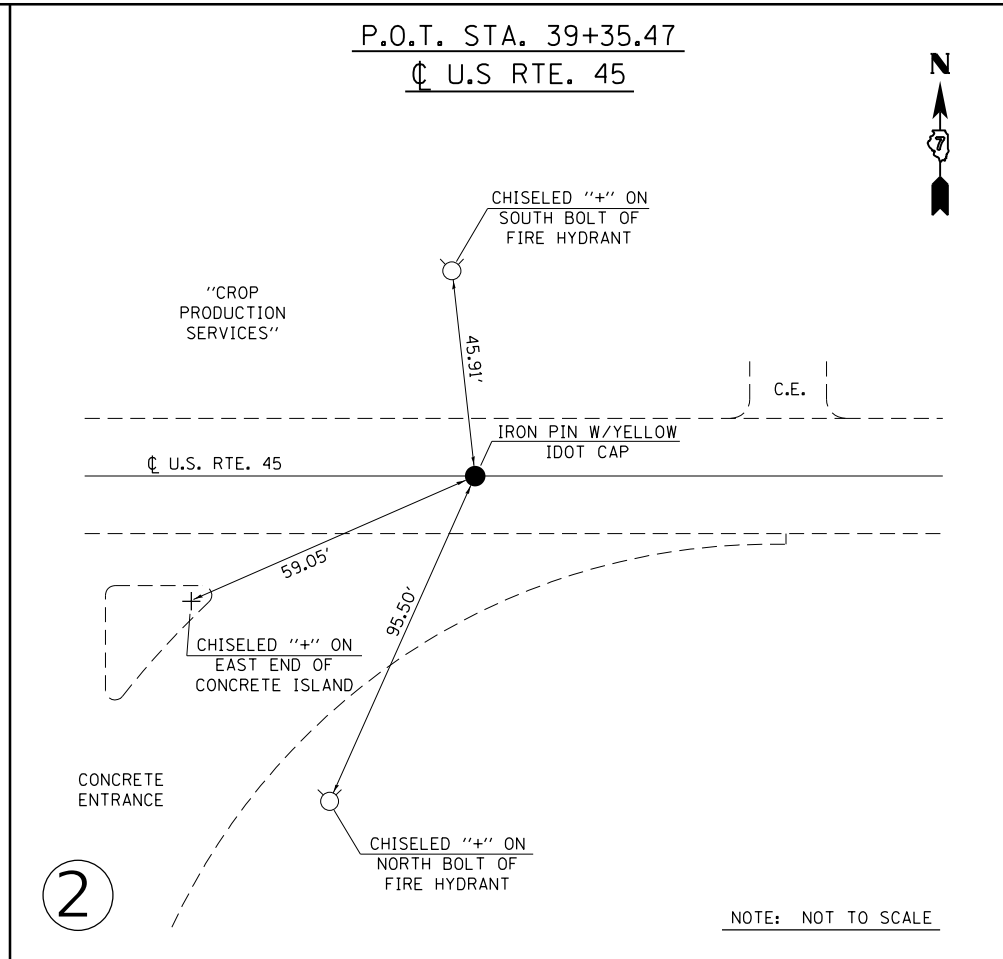
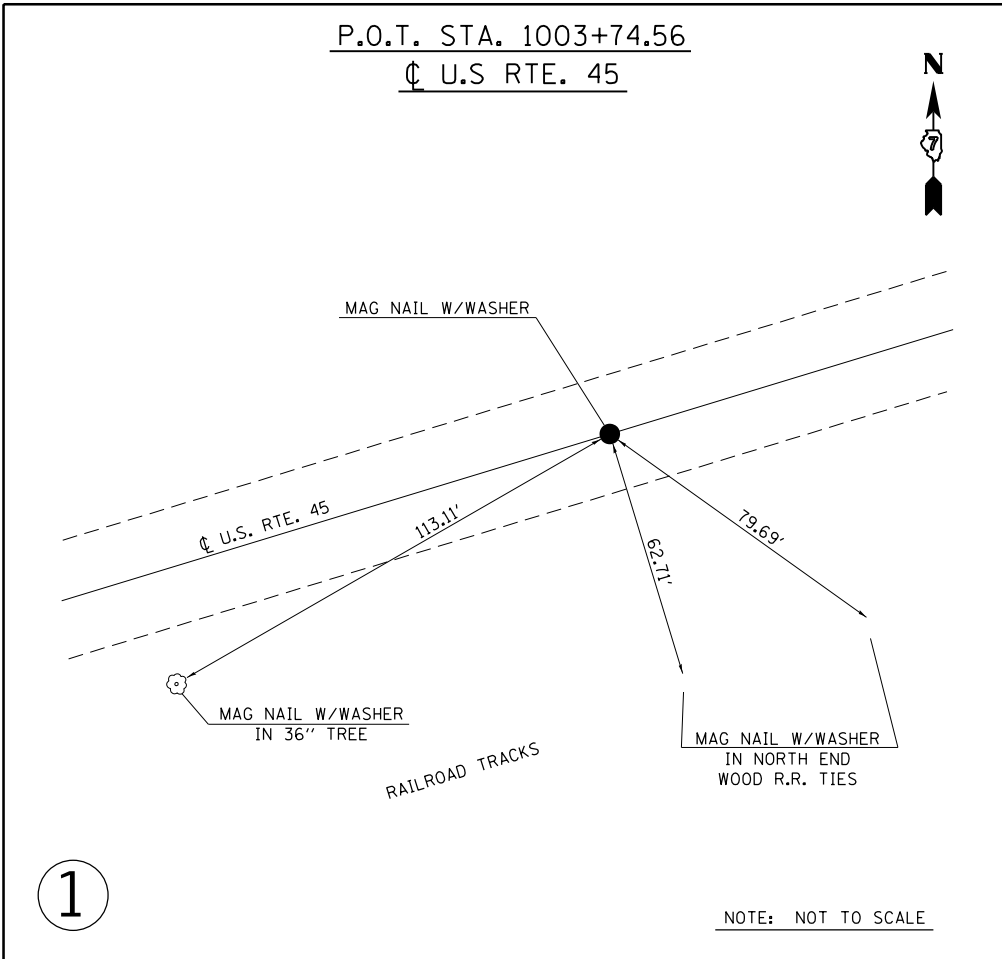
80% FED
20% STATE

SUMMARY OF QUANTITIES			TOTAL QUANTITIES	CONSTRUCTION TYPE CODE		
CODE NO	ITEM	UNIT		0005		
45100100	CRACK ROUTING (PAVEMENT)	FOOT	23725	23725		
45100200	CRACK FILLING	POUND	11150	11150		
67100100	MOBILIZATION	L SUM	1	1		
70100460	TRAFFIC CONTROL AND PROTECTION, STANDARD	L SUM	1	1		
	701306					
70107025	CHANGEABLE MESSAGE SIGN	CAL DA	28	28		
* 78001110	PAINT PAVEMENT MARKING - LINE 4"	FOOT	53382	53382		
Z0049799	PROTECTING OR RESETTING SURVEY MARKERS	EACH	5	5		

* SPECIALTY ITEM

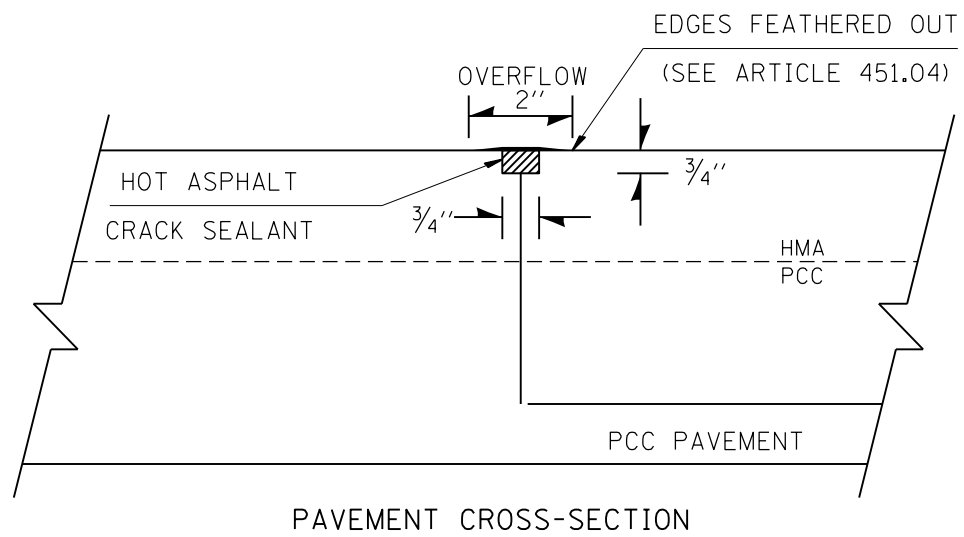
MODEL: Default
FILE: main: \\p:\pub\baronoma\at\illinois.gov\RWIDOT\Documents\DOT_Offices\Director_7\Projects\74967\CA0Data\CAD\ sheets\ 74967-sht-500.dgn

USER NAME = steffenmk	DESIGNED -	REVISED -	STATE OF ILLINOIS DEPARTMENT OF TRANSPORTATION		SUMMARY OF QUANTITIES		F.A.P. RTE.	SECTION	COUNTY	TOTAL SHEETS	SHEET NO.
PLOT SCALE = 100,0000 ' / in.	DRAWN -	REVISED -					824	(13, 14, 14-1Z)PVMТ PRSV	CUMBERLAND	6	3
PLOT DATE = 1/22/2020	CHECKED -	REVISED -					*F.A.S. 1652			CONTRACT NO. 74967	
	DATE -	REVISED -					SCALE:	SHEET OF SHEETS	STA.	TO STA.	ILLINOIS FED. AID PROJECT



NOTE:
 SURVEY TIES #2-4 REFERENCE DIFFERENT STATIONING
 THAN WHAT IS SHOWN ON THE PLANS. CONTRACTOR
 SHALL LOCATE TIE #3 IN THE FIELD AND MEASURE THE
 APPROPRIATE DISTANCE TO LOCATE THE OTHER TIES.

STATION	PROTECTING OR RESETTING SURVEY MARKERS (EACH)
1003+74.56	1
60+09.61	1
50+00	1
47+68.52	1
39+35.47	1
	5



 ROUTED, CLEANED, AND SEALED

TYPICAL DETAIL FOR JOINTS

MODEL: Default
 FILE: h:\mhc\p\pub\haronom.dwg
 PROJECT: R:\Projects\74967\CADD\Drawings\DOT_Offices\Drawings\74967-CRACK-AND-JOINT-SEALING.dwg

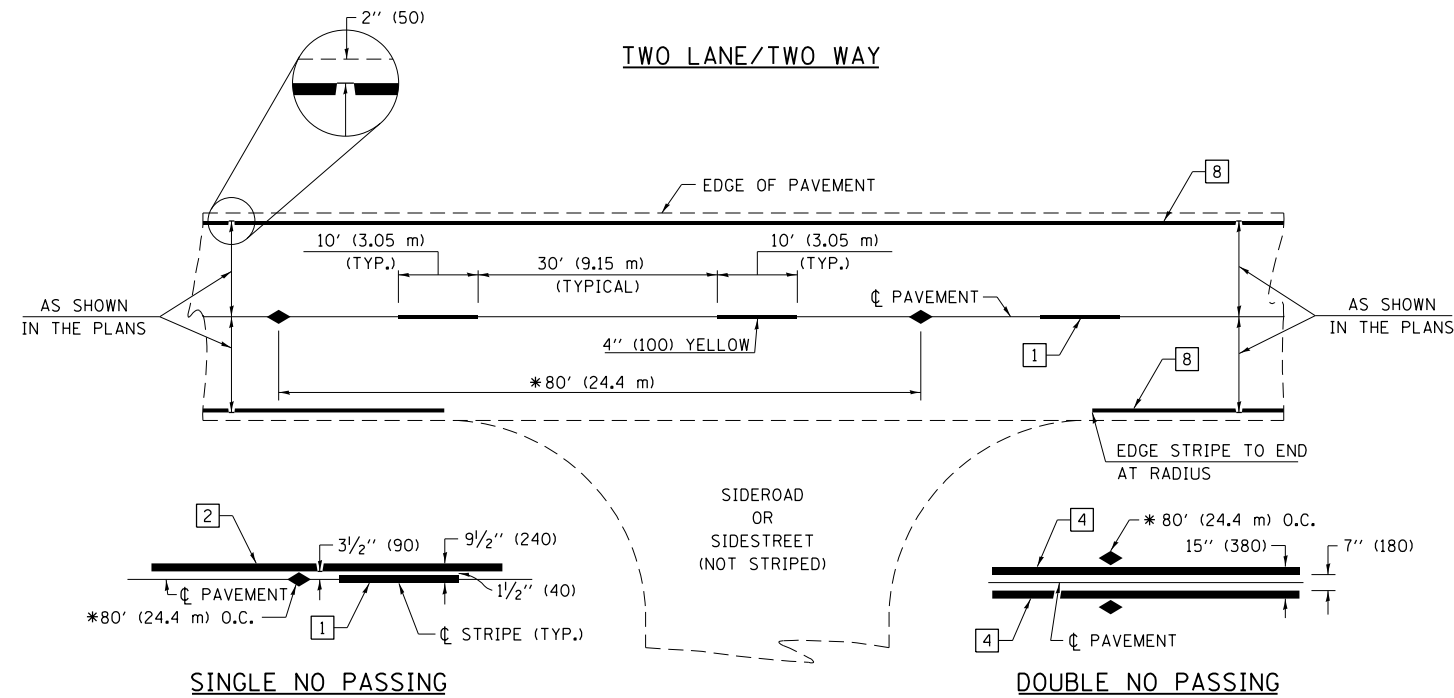
USER NAME = steffenmk	DESIGNED -	REVISED -
	DRAWN -	REVISED -
PLOT SCALE = 100.0000 ' / in.	CHECKED -	REVISED -
PLOT DATE = 1/22/2020	DATE -	REVISED -

**STATE OF ILLINOIS
 DEPARTMENT OF TRANSPORTATION**

CRACK AND JOINT SEALING DETAIL

SCALE: SHEET OF SHEETS STA. TO STA.

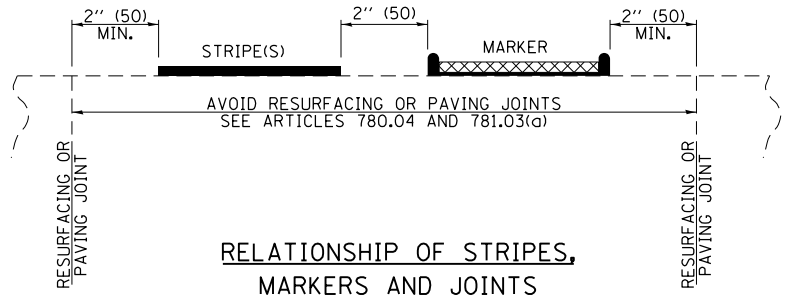
F.A.P. RTE.	SECTION	COUNTY	TOTAL SHEETS	SHEET NO.
824	(13, 14, 14-IZ)PVMT PRSV	CUMBERLAND	6	5
*F.A.S. 1652			CONTRACT NO. 74967	
		ILLINOIS	FED. AID PROJECT	



* REDUCE TO 40' (12.2 m) O.C. ON CURVES WITH POSTED OR ADVISORY SPEEDS OF 45 mph (70 km/h) OR LESS.

PAVEMENT MARKING LEGEND

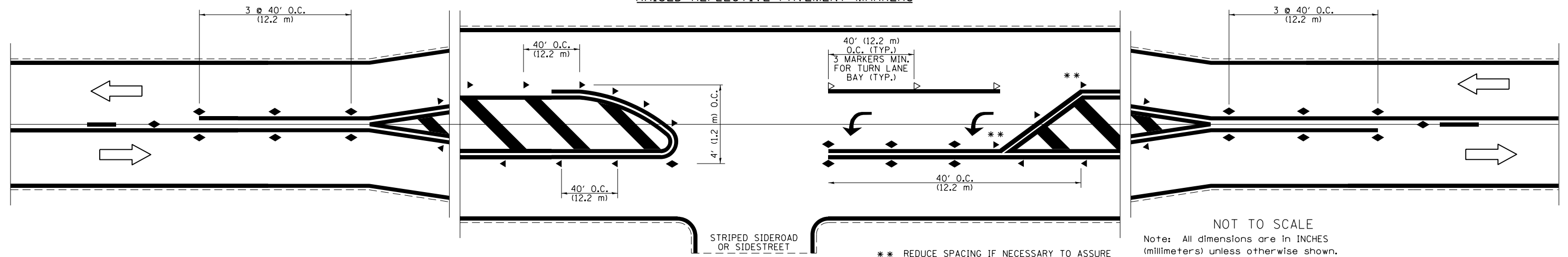
- 1 4" (100) SKIP-DASH (YELLOW)
 - 2 4" (100) SOLID (YELLOW)
 - 3 12" (300) DIAGONAL (YELLOW)
 - 4 4" (100) DOUBLE YELLOW (NARROW)
 - 5 12" (300) SOLID WHITE
 - 6 RESERVED
 - 7 6" (150) SKIP-DASH (WHITE)
 - 8 4" (100) SOLID (WHITE)
 - 9 12" (300) DIAGONAL (WHITE)
 - 10 6" (150) SOLID (WHITE)
 - 11 24" (600) STOP BAR (WHITE)
 - 12 8" (200) SOLID (WHITE)
 - 13 4" (100) PARKING WHITE
-



TYPICAL PAVEMENT MARKERS LEGEND

- ◆ TWO-WAY AMBER MARKER
- ▶ ONE-WAY AMBER MARKER
- ▷ ONE-WAY CRYSTAL MARKER

RAISED REFLECTIVE PAVEMENT MARKERS



FILE NAME =	USER NAME = steffennk	DESIGNED -	REVISED -
pw:\planning\dot.illinois.gov\PIDOT\Documents\IDOT Offices\District 7\Projects\74967\DRAWN\CADsheets\0774967-shd-details.dwg		REVISOR -	REVISED -
	PLOT SCALE = 99.0167' / in.	CHECKED -	REVISED -
	PLOT DATE = 1/22/2020	DATE -	REVISED -

**STATE OF ILLINOIS
DEPARTMENT OF TRANSPORTATION**

**PAVEMENT MARKING AND RAISED REFLECTIVE PAVEMENT MARKERS
(RURAL & URBAN APPLICATIONS)**

SCALE: NA SHEET NO. OF SHEETS STA. TO STA.

DISTRICT 7 DETAIL NO. 78000001				
F.A.P. RTE.	SECTION	COUNTY	TOTAL SHEETS	SHEET NO.
824	(13, 14, 14-IZ)PVMT PRSV	CUMBERLAND	6	6
*F.A.S. 1652	CONTRACT NO. 74967			
ILLINOIS FED. AID PROJECT				