

079

STATE OF ILLINOIS
DEPARTMENT OF TRANSPORTATION

F.A.P. RTE.	SECTION	COUNTY	TOTAL SHEETS	SHEET NO.
304	100B-BDS-3	MADISON	13	1
		ILLINOIS	CONTRACT NO. 76K76	

D-98-058-19

FOR INDEX OF SHEETS, SEE SHEET NO. 2

PROPOSED HIGHWAY PLANS

FAP ROUTE 304 (US 67)
SECTION 100B-BDS-3
PROJECT NHPP-KCB3(863)
BRIDGE DECK SEALING
MADISON COUNTY

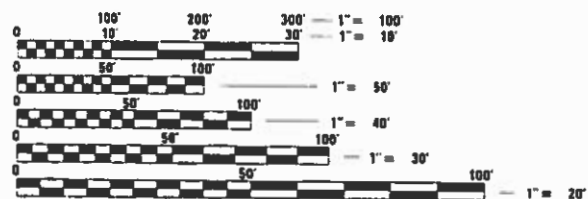
C-98-077-19

TRAFFIC DATA

2019 ADT = 21,500 (ACTUAL)
2020 ADT = 21,700 (ESTIMATED)
SU = 1.6%
MU = 1.4%

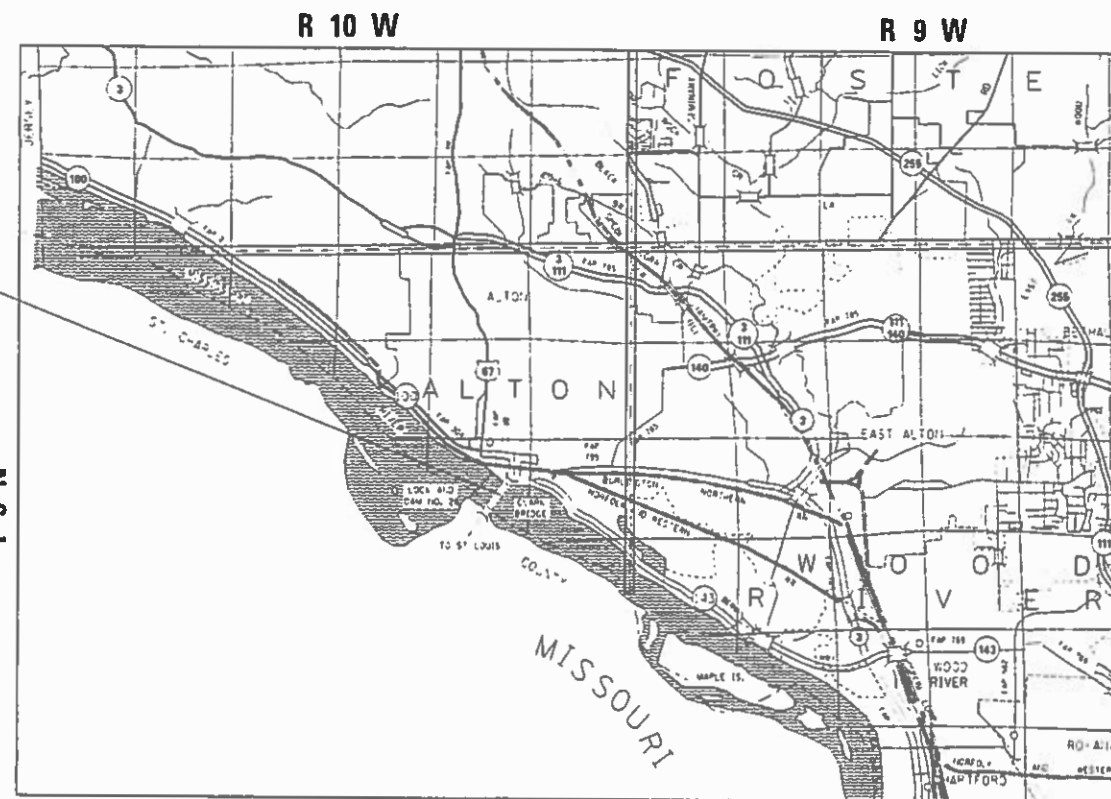


CLARK BRIDGE
STA. 208 + 35 TO STA. 254 + 55
(BACK TO BACK OF ABUTMENTS)
LATITUDE: +38.88784
LONGITUDE: -90.17254



FULL SIZE PLANS HAVE BEEN PREPARED USING STANDARD ENGINEERING SCALES. REDUCED SIZED PLANS WILL NOT CONFORM TO STANDARD SCALES. IN MAKING MEASUREMENTS ON REDUCED PLANS, THE ABOVE SCALES MAY BE USED.

J.U.L.I.E.
JOINT UTILITY LOCATION INFORMATION FOR EXCAVATORS
1-800-892-0123
OR 811



NOT TO SCALE

GROSS LENGTH = 4620.00 FT. = 0.875 MILE
NET LENGTH = 4620.00 FT. = 0.875 MILE

PROJECT ENGINEER: HERVE GELIN (618) 346-3179
DESIGNER: MARY SMITH (618) 346-3495

CONTRACT NO. 76K76

STATE OF ILLINOIS
DEPARTMENT OF TRANSPORTATION

SUBMITTED Jan 21, 2020
Keith Roberts
REGIONAL ENGINEER

March 20, 2020
[Signature]
ENGINEER OF DESIGN AND ENVIRONMENT

March 20, 2020
[Signature]
DIRECTOR OF HIGHWAYS PROJECT IMPLEMENTATION

PRINTED BY THE AUTHORITY
OF THE STATE OF ILLINOIS

INDEX OF SHEETS

- 1 COVER
- 2 INDEX OF SHEETS, HIGHWAY STANDARDS, GENERAL NOTES, COMMITMENTS & PERTINENT INFORMATION
- 3 SUMMARY OF QUANTITIES
- 4-5 TYPICAL SECTIONS
- 6 SCHEDULE OF QUANTITIES
- 7-10 PLAN SHEETS
- 11 DETAIL SHEET
- 12 BIKE LANE CLOSURE SIGNING PLAN
- 13 TRAFFIC CONTROL AND PROTECTION, (SPECIAL)

HIGHWAY STANDARDS

- 000001-07 STANDARD SYMBOLS, ABBREVIATIONS AND PATTERNS
- 001006 DECIMAL OF AN INCH AND OF A FOOT
- 701422-10 LANE CLOSURE, MULTILANE, FOR SPEEDS \geq 45 MPH TO 55 MPH
- 701901-08 TRAFFIC CONTROL DEVICES

GENERAL NOTES

1. UTILITIES KNOWN TO HAVE FACILITIES WITHIN THE PROJECT AREA ARE AS FOLLOWS:
 - * CITY OF ALTON -- WATER & SANITARY SEWER (BURIED)
 - * CITY OF ALTON -- LIGHTING (AERIAL AND BURIED)
 - * AT&T -- COMMUNICATIONS (AERIAL AND BURIED)

MEMBERS OF J.U.L.I.E. CALL TOLL FREE (800) 892-0123 OR 811 AND ARE INDICATED BY *. NON-J.U.L.I.E. MEMBERS MUST BE NOTIFIED INDIVIDUALLY.
2. NO SURVEY WAS PERFORMED FOR THIS PROJECT AND THE PLANS WERE CREATED USING MICROFILM.
3. FOUR CHANGEABLE MESSAGE BOARDS SHALL BE REQUIRED FOR THIS PROJECT. THEY SHALL BE PLACED TWO WEEKS PRIOR TO ANY LANE CLOSURE. THE CHANGEABLE MESSAGE BOARDS SHALL BE PLACED ACCORDING TO THE TRAFFIC CONTROL AND PROTECTION, (SPECIAL) SHEET SPECIFIED LOCATIONS AS DIRECTED BY THE ENGINEER.
4. THE DEPARTMENT STRONGLY ENCOURAGES THE PRIME CONTRACTOR AND THEIR APPROVED SUB-CONTRACTORS TO HIRE MINORITY, WOMEN AND DISADVANTAGED INDIVIDUALS FROM ITS FEDERALLY FUNDED HIGHWAY CONSTRUCTION CAREERS TRAINING PROGRAM (HCCTP) TO HELP MEET WORKFORCE AND TRAINEE GOALS. THIS PROGRAM IS TRAINING MINORITIES, WOMEN AND DISADVANTAGED INDIVIDUALS IN HIGHWAY CONSTRUCTION-RELATED SKILLS, E.G., MATH FOR THE TRADES, JOB READINESS, TECHNICAL SKILLS COURSEWORK (CARPENTRY, CONCRETE FLATWORK, BLUEPRINT READING, SITE PLANS, SITE WORK, TOOLS USE, ETC.) AND OSHA 10 HOUR CERTIFICATION, TO PREPARE THEM FOR A CAREER IN THE HIGHWAY CONSTRUCTION TRADES. GRADUATES ARE WELL-TRAINED AND READY TO BECOME PRODUCTIVE ENTRY-LEVEL CONSTRUCTION WORKERS. CONTACT THE DISTRICT 8 EEO OFFICE AT 618-346-3360 AND/OR THE HCCTP COORDINATOR AT 618-874-6528 TO LEARN MORE ABOUT THE PROGRAM AND FOR ASSISTANCE IN MEETING WORKFORCE AND TRAINEE GOALS.

COMMITMENTS

NONE

PERTINENT INFORMATION

1. SIGNAGE SHALL BE PLACED AT THE BICYCLE TRAIL ON BOTH SIDES OF THE BRIDGE THAT THE BICYCLE TRAIL/ACCOMMODATION IS CLOSED DURING CONSTRUCTION.

THE CONTRACTOR SHALL NOTIFY THE FOLLOWING AGENCIES AT LEAST (TWO) 2 WEEKS PRIOR TO PROCEEDING WITH THE WORK:

- * MADISON COUNTY TRANSIT DISTRICT, FAX (618) 797-7547
- * MADISON COUNTY 911 EMERGENCY TELEPHONE SYSTEM BOARD, (618) 296-5911
- * DISTRICT 8 TRAFFIC MANAGEMENT CENTER, (618) 346-3233
- * MISSOURI DEPARTMENT OF TRANSPORTATION, (314) 453-1749, ATTN.: BETHERNY WILLIAMS
- * METRO EAST PARK AND RECREATION DISTRICT, (618) 346-4905
- * TRAILNET, (314) 455-6329
- * RIDE ILLINOIS, (630) 978-0583
- * GREAT RIVERS GREENWAY, (314) 436-7009

MODEL: Default
 FILE: \\nashc-pix\uplanroom\data\illinois.gov\PWIDOT\Documents\DOT_Offices\District 8\Projects\0876K76\CADDData\CAD\sheet\0876K76-11-genote.dgn

USER NAME = smithma	DESIGNED -	REVISED -
	DRAWN -	REVISED -
PLOT SCALE = 100.0000 ' / in.	CHECKED -	REVISED -
PLOT DATE = 1/16/2020	DATE -	REVISED -

**STATE OF ILLINOIS
DEPARTMENT OF TRANSPORTATION**

**INDEX OF SHEETS, HIGHWAY STANDARDS, GENERAL NOTES,
COMMITMENTS & PERTINENT INFORMATION**

SCALE: SHEET 1 OF 1 SHEETS STA. TO STA.

F.A.P RTE.	SECTION	COUNTY	TOTAL SHEETS	SHEET NO.
304	100B-BDS-3	MADISON	13	2
CONTRACT NO. 76K76				
ILLINOIS		FED. AID PROJECT		

URBAN

CODE NO.	ITEM	UNIT	TOTAL QUANTITY	CONSTR. CODE
				80% FED 20% STATE BRIDGE 0047 060-0255
67100100	MOBILIZATION	L SUM	1	1
70100320	TRAFFIC CONTROL AND PROTECTION, STANDARD 701422	L SUM	1	1
70107025	CHANGEABLE MESSAGE SIGN	CAL DA	72	72
70200100	NIGHTTIME WORK ZONE LIGHTING	L SUM	1	1
X3000001	RRPM PROTECTION	EACH	118	118
X5870015	BRIDGE DECK CONCRETE SEALER	SQ FT	450262	450262
X7010216	TRAFFIC CONTROL AND PROTECTION, (SPECIAL)	L SUM	1	1

MODEL: Default
 FILE: Main: P:\uplanroom.dat:illinois.gov:PWIDOT\Documents\DOT_Offices\District_8\Projects\ID76K76\CAD\data\CAD\sheet\ID76K76-sh-500.dgn

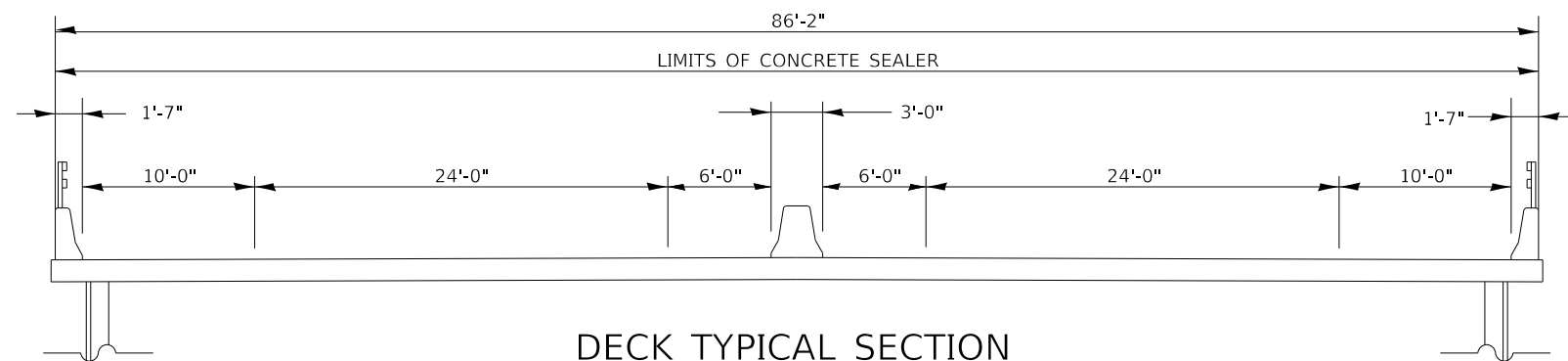
USER NAME = smithma	DESIGNED -	REVISED -
	DRAWN -	REVISED -
PLOT SCALE = 100.0000 ' / in.	CHECKED -	REVISED -
PLOT DATE = 1/16/2020	DATE -	REVISED -

**STATE OF ILLINOIS
DEPARTMENT OF TRANSPORTATION**

SUMMARY OF QUANTITIES

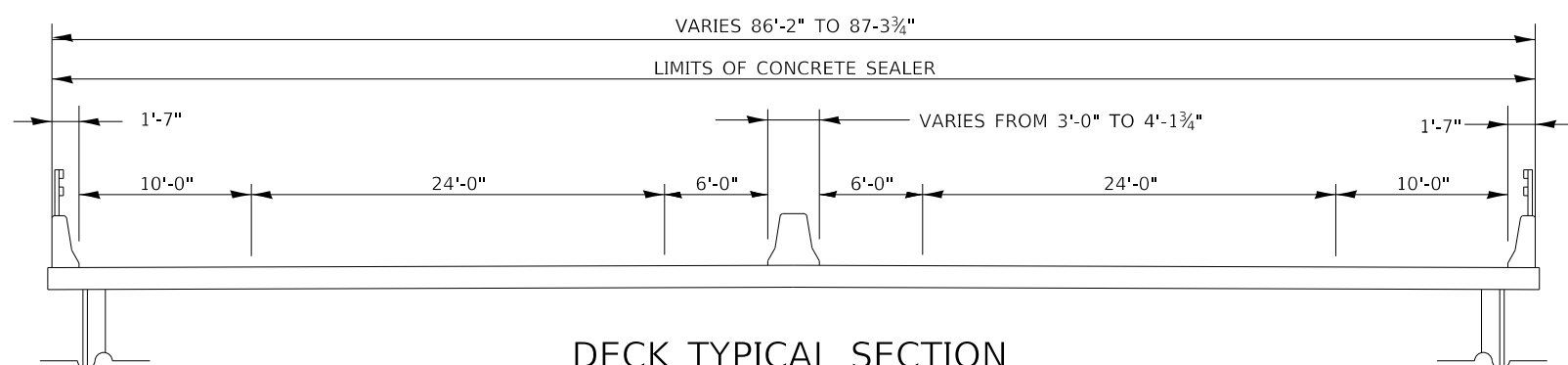
SCALE: SHEET 1 OF 1 SHEETS STA. TO STA.

F.A.P. RTE.	SECTION	COUNTY	TOTAL SHEETS	SHEET NO.
304	1008-BDS-3	MADISON	13	3
CONTRACT NO. 76K76			ILLINOIS FED. AID PROJECT	



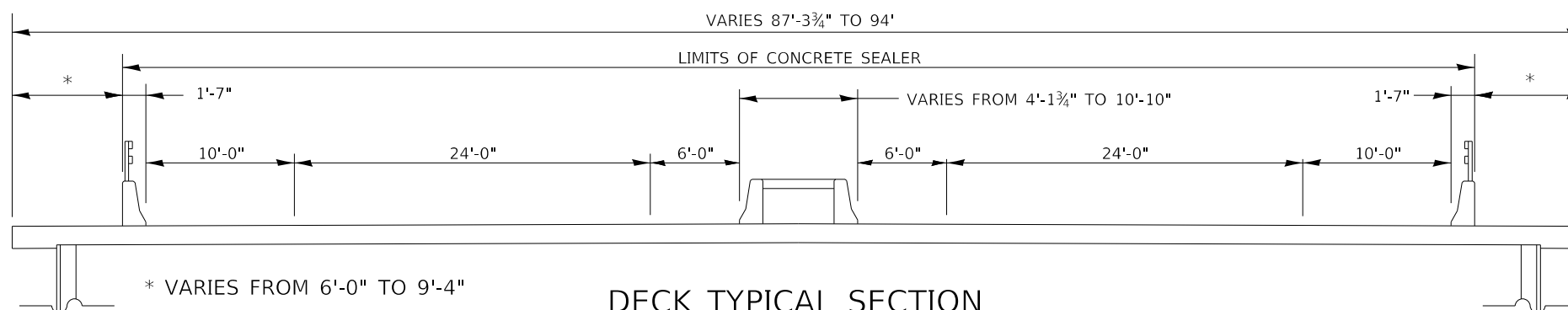
DECK TYPICAL SECTION

STA. 208+35.00 TO STA. 224+43.04
STA. 237+97.12 TO STA. 250+62.00



DECK TYPICAL SECTION

STA. 224+43.04 TO STA. 225+21.50
STA. 237+18.50 TO STA. 237+97.12



DECK TYPICAL SECTION

STA. 225+21.50 TO STA. 227+22.00
STA. 235+18.00 TO STA. 237+18.50

MODEL: Default
FILE: h:\mfc\pic\uplanroom.dwg
PROJECT: I:\Projects\DOT\Documents\DOT - Offices\District 8\Projects\DOT\76K76\CADDData\CAD\Sheets\DOT76K76-11-typical.dgn

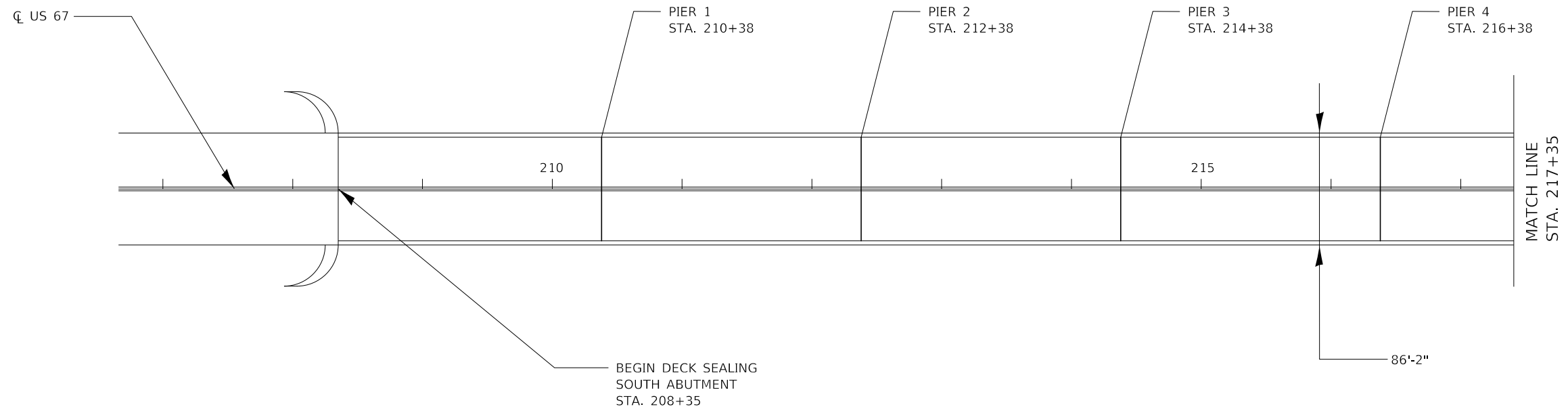
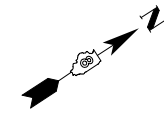
USER NAME = smithma	DESIGNED -	REVISED -
	DRAWN -	REVISED -
PLOT SCALE = 100.0000' / in.	CHECKED -	REVISED -
PLOT DATE = 1/16/2020	DATE -	REVISED -

**STATE OF ILLINOIS
DEPARTMENT OF TRANSPORTATION**

TYPICAL SECTIONS

SCALE: SHEET 1 OF 2 SHEETS STA. TO STA.

F.A.P. RTE.	SECTION	COUNTY	TOTAL SHEETS	SHEET NO.
304	100B-BDS-3	MADISON	13	4
CONTRACT NO. 76K76				
ILLINOIS FED. AID PROJECT				



MODEL: Default
 FILE: \\nlsr-pc\pub\planroom\dat\illinois.gov\PWIDOT\Documents\IDOT_Offices\IDOT\B\Projects\IDOT\76K76\CAD\Bdata\CAD\Sheets\IDOT\76K76-11-Plan.dgn

USER NAME = smithma	DESIGNED -	REVISED -
	DRAWN -	REVISED -
PLOT SCALE = 100.0000' / in.	CHECKED -	REVISED -
PLOT DATE = 1/16/2020	DATE -	REVISED -

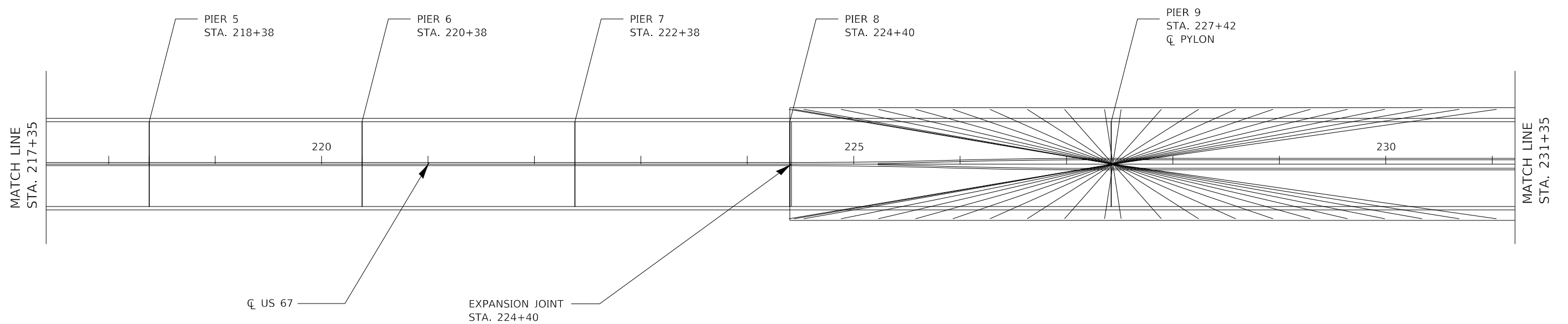
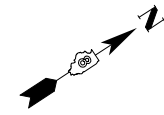
**STATE OF ILLINOIS
DEPARTMENT OF TRANSPORTATION**

PLAN SHEETS

SCALE: SHEET 1 OF 4 SHEETS STA. TO STA.

F.A.P. RTE.	SECTION	COUNTY	TOTAL SHEETS	SHEET NO.
304	100B-BDS-3	MADISON	13	7
ILLINOIS			FED. AID PROJECT	

CONTRACT NO. 76K76



MODEL: Default
 FILE: Model_C:\p1\planroom.dwg
 PROJECT: 100B-BDS-3
 OFFICE: District 8
 CONTRACT: 76K76
 SHEET: 2 OF 4

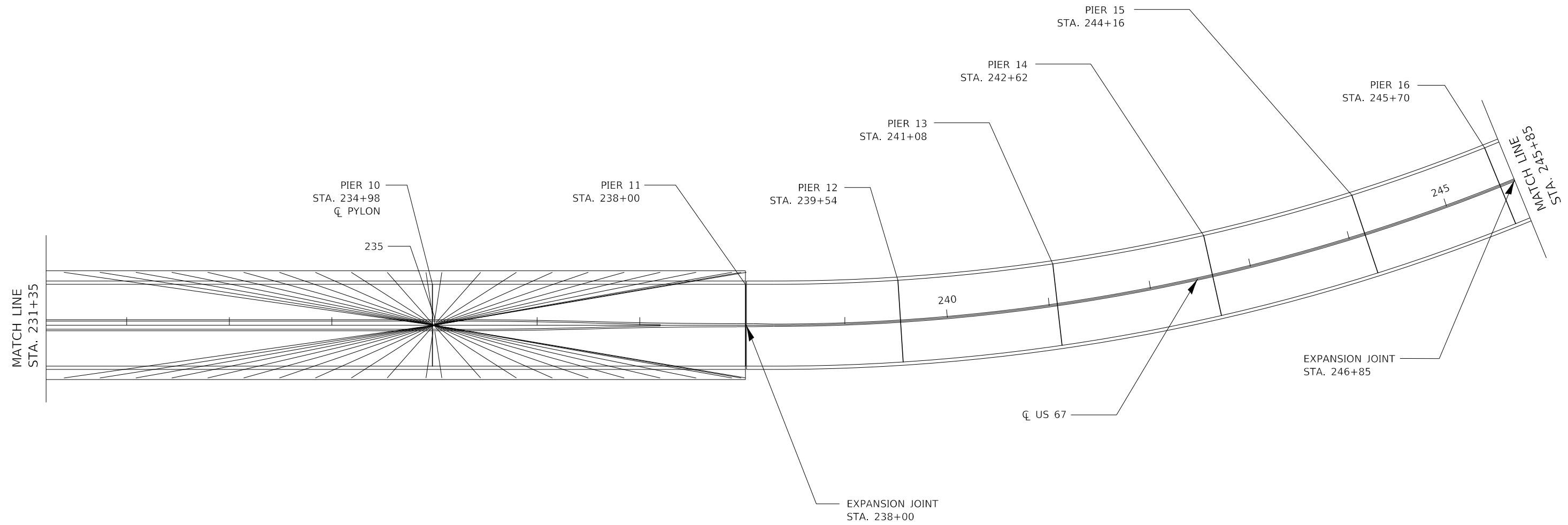
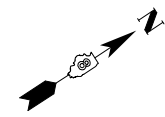
USER NAME = smithma	DESIGNED -	REVISED -
	DRAWN -	REVISED -
PLOT SCALE = 100.0000' / in.	CHECKED -	REVISED -
PLOT DATE = 1/16/2020	DATE -	REVISED -

STATE OF ILLINOIS
DEPARTMENT OF TRANSPORTATION

PLAN SHEETS

SCALE: SHEET 2 OF 4 SHEETS STA. TO STA.

F.A.P. RTE.	SECTION	COUNTY	TOTAL SHEETS	SHEET NO.
304	100B-BDS-3	MADISON	13	8
ILLINOIS FED. AID PROJECT			CONTRACT NO. 76K76	



MODEL: Default
 FILE: \\nrcs-pix\uplanroom\data\illinois.gov\PWIDOT\Documents\DOT_Offices\District 8\Projects\0876K76\CADDData\CAD\Sheets\0876K76-PI-PLAN.dgn

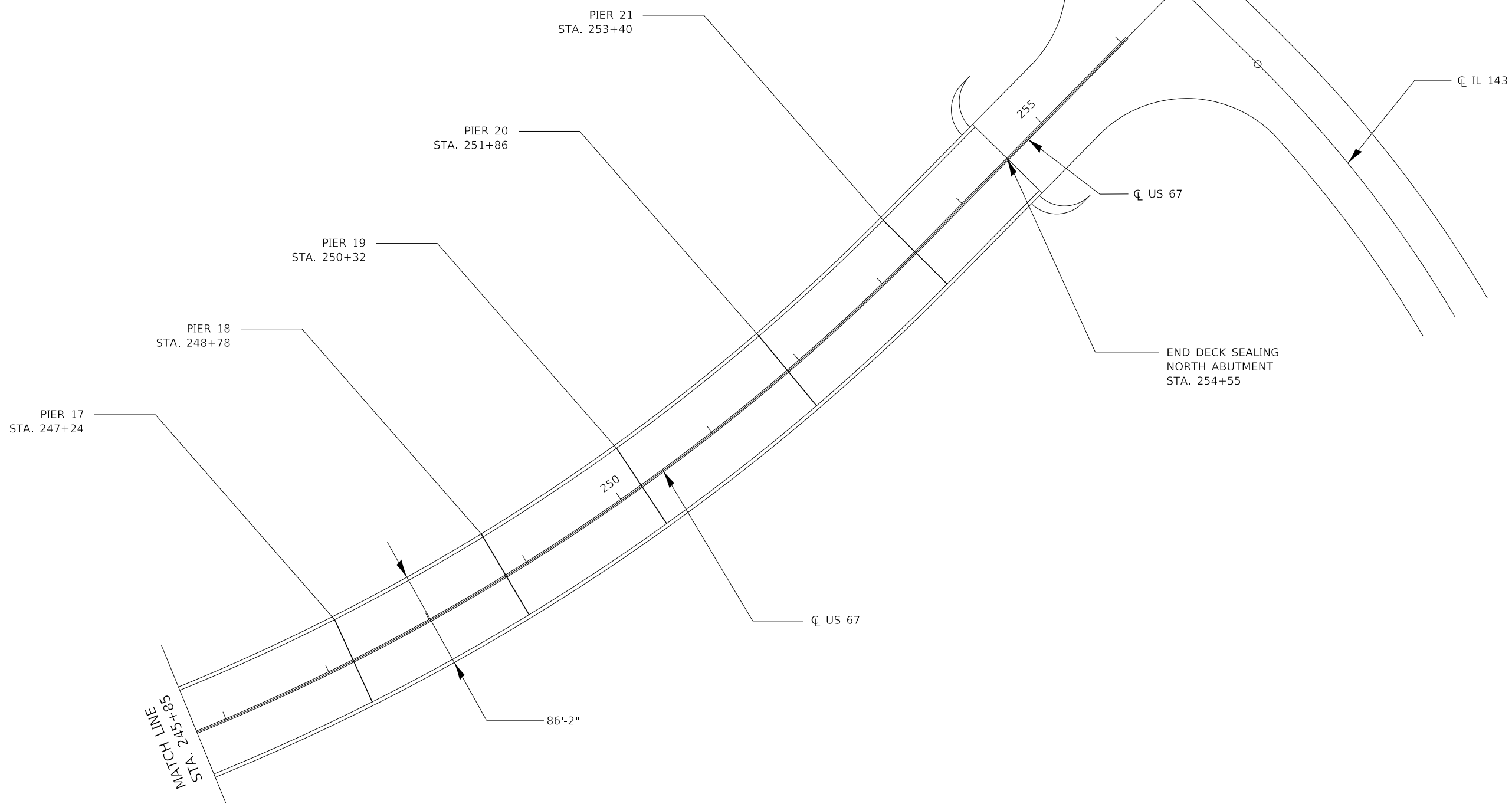
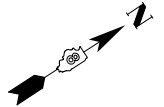
USER NAME = smithma	DESIGNED -	REVISED -
	DRAWN -	REVISED -
PLOT SCALE = 100,0000 ' / in.	CHECKED -	REVISED -
PLOT DATE = 1/16/2020	DATE -	REVISED -

**STATE OF ILLINOIS
DEPARTMENT OF TRANSPORTATION**

PLAN SHEETS

SCALE: SHEET 3 OF 4 SHEETS STA. TO STA.

F.A.P. RTE.	SECTION	COUNTY	TOTAL SHEETS	SHEET NO.
304	100B-BDS-3	MADISON	13	9
CONTRACT NO. 76K76				
ILLINOIS FED. AID PROJECT				



MODEL: Default
 FILE: Model_C:\p1\planroom.dwg
 PROJECT: I:\projects\DOT\Documents\DOT_Offices\District 8\Projects\DOT\76K76\CADD\Drawings\DOT\76K76-11-Plan.dgn

USER NAME = smithma	DESIGNED -	REVISED -
	DRAWN -	REVISED -
PLOT SCALE = 100,0000' / in.	CHECKED -	REVISED -
PLOT DATE = 1/16/2020	DATE -	REVISED -

**STATE OF ILLINOIS
DEPARTMENT OF TRANSPORTATION**

PLAN SHEETS

SCALE: SHEET 4 OF 4 SHEETS STA. TO STA.

F.A.P. RTE.	SECTION	COUNTY	TOTAL SHEETS	SHEET NO.
304	100B-BDS-3	MADISON	13	10
CONTRACT NO. 76K76				
		ILLINOIS	FED. AID PROJECT	

NOTES

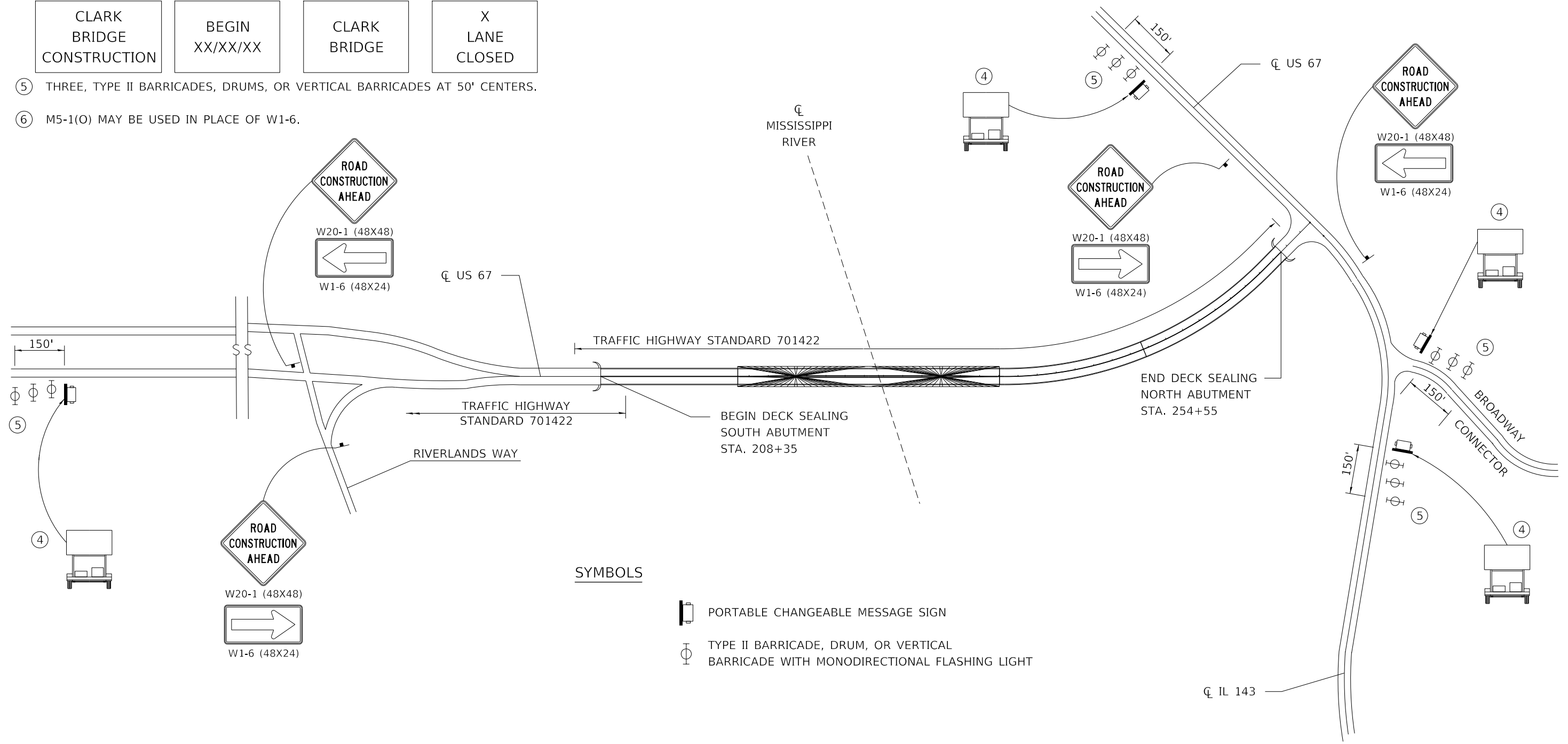
- ① LOCATIONS OF MESSAGE BOARDS IN ILLINOIS TO BE COORDINATED WITH THE RESIDENT ENGINEER.
- ② LOCATION OF MESSAGE BOARD IN MISSOURI TO BE COORDINATED WITH THE RESIDENT ENGINEER AND BY THE MISSOURI DEPARTMENT OF TRANSPORTATION.
- ③ MESSAGE BOARDS SHALL BE ERECTED 2 WEEKS PRIOR TO START OF BRIDGE DECK SEALING AND WILL BE PAID FOR SEPARATELY.
- ④ THE MESSAGE BOARD SHALL BE USED TO DISPLAY STATUS OF LANES WITHIN THE PROJECT. THE PRIMARY MESSAGES SHALL BE:

PRIOR TO CONSTRUCTION

DURING CONSTRUCTION



- ⑤ THREE, TYPE II BARRICADES, DRUMS, OR VERTICAL BARRICADES AT 50' CENTERS.
- ⑥ M5-1(O) MAY BE USED IN PLACE OF W1-6.



SYMBOLS

- PORTABLE CHANGEABLE MESSAGE SIGN
- TYPE II BARRICADE, DRUM, OR VERTICAL BARRICADE WITH MONODIRECTIONAL FLASHING LIGHT

MODEL: Default
 FILE: N:\mfc_p\pub\planroom.dwg
 PROJECT: I:\Projects\76K76\CADD\Drawings\DOT_Offices\Drawings\76K76\CADD\Drawings\76K76-15-15-2020.dwg

USER NAME = smithma	DESIGNED -	REVISED -
PLOT SCALE = 100.0000' / in.	DRAWN -	REVISED -
PLOT DATE = 1/16/2020	CHECKED -	REVISED -
	DATE -	REVISED -

**STATE OF ILLINOIS
DEPARTMENT OF TRANSPORTATION**

TRAFFIC CONTROL AND PROTECTION, (SPECIAL)

SCALE: SHEET 1 OF 1 SHEETS STA. TO STA.

F.A.P. RTE.	SECTION	COUNTY	TOTAL SHEETS	SHEET NO.
304	100B-BDS-3	MADISON	13	13
CONTRACT NO. 76K76				
ILLINOIS FED. AID PROJECT				