

STATE OF ILLINOIS
DEPARTMENT OF TRANSPORTATION

F.A.S. RTE. 1780	SECTION (24,24-1)RS-4	COUNTY CLINTON	TOTAL SHEETS 9	SHEET NO. 1
R.L.P.O.S. CONTRACT NO. 76N32				

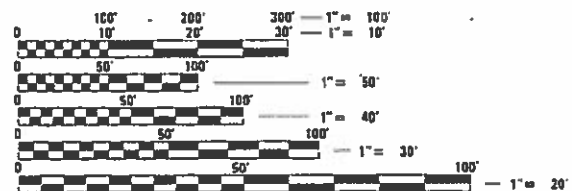
**PROPOSED
HIGHWAY PLANS**

FAS ROUTE 1780 (OLD US 50)
SECTION (24,24-1)RS-4
PROJECT
CM-SMART RESURFACING & PATCHING
CLINTON COUNTY

C-98-075-20

FOR INDEX OF SHEETS, SEE SHEET NO.

TRAFFIC DATA	
LOCATION	OLD US 50
2019 ADT	6600 (ACTUAL)
2044 ADT	8100 (ESTIMATED)
MU%	1.4
SU%	2.4



FULL SIZE PLANS HAVE BEEN PREPARED USING STANDARD ENGINEERING SCALES. REDUCED SIZED PLANS WILL NOT CONFORM TO STANDARD SCALES. IN MAKING MEASUREMENTS ON REDUCED PLANS, THE ABOVE SCALES MAY BE USED.

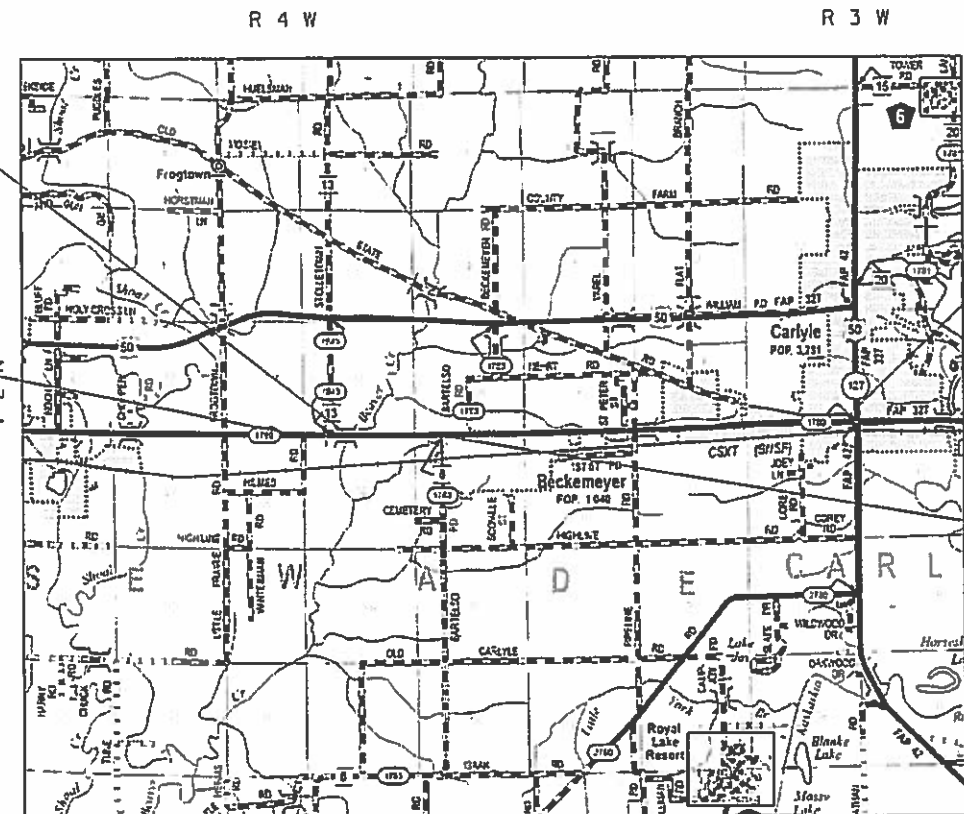
J.U.L.I.E.
JOINT UTILITY LOCATION INFORMATION FOR EXCAVATORS
1-800-892-0123
OR 811

BRIDGE OMISSION - SN 014-0069
STA. 1463+46.5 TO STA. 1467+25.5
(379 FT)

BEGIN PROJECT
STA. 1439+70
LAT: 38.609316
LONG: -89.466828

END PROJECT
STA. 1705+81
LAT: 38.610192
LONG: -89.374036

END SMART RESURFACING
STA. 1499+54
LAT: 38.624903
LONG: -89.374957
1.13 MILES (5,966.4 FT)



GROSS LENGTH = 26,611.2 FT. = 5.04 MILE
NET LENGTH = 26,232.2 FT. = 4.96 MILE

PROJECT ENGINEER: TIM PADGETT (618) 346-3325
PROJECT MANAGER: RAHSHUN MILLER (618) 346-3196

CONTRACT NO. 76N32

STATE OF ILLINOIS
DEPARTMENT OF TRANSPORTATION

SUBMITTED Jan 21 20 20
Keith Robert
REGIONAL ENGINEER

March 20 20 20
Scott A. Etk
ENGINEER OF DESIGN AND ENVIRONMENT

March 20 20 20
Garrett
DIRECTOR OF HIGHWAYS PROJECT IMPLEMENTATION

PRINTED BY THE AUTHORITY
OF THE STATE OF ILLINOIS

INDEX OF SHEETS

1	COVER SHEET
2	INDEX OF SHEETS, GENERAL NOTES, HIGHWAY STANDARDS, MIXTURE REQUIREMENTS & COMMITMENTS
3-4	SUMMARY OF QUANTITIES
5	TYPICAL SECTIONS
6	SCHEDULE OF QUANTITIES
7	PAVEMENT MARKING SHEET
8	LOCATION MAP
9	TIES & SURVEY MONUMENTS DETAILS

HIGHWAY STANDARDS

000001-07	STANDARD SYMBOLS, ABBREVIATIONS AND PATTERNS
001006	DECIMAL OF AN INCH AND OF A FOOT
420701-03	PAVEMENT WELDED WIRE REINFORCEMENT
442101-09	CLASS B PATCHES
701011-04	OFF-ROAD MOVING OPERATIONS, 2L, 2W DAY ONLY
701201-05	LANE CLOSURES, 2L, 2W, DAY ONLY FOR SPEEDS ≥ 45 MPH
701301-04	LANE CLOSURES, 2L, 2W, SHORT TIME OPERATIONS
701306-04	LANE CLOSURES, 2L, 2W, SLOW MOVING OPERATIONS DAY ONLY FOR SPEEDS ≥ 45 MPH
701311-03	SLOW MOVING OPERATIONS DAY ONLY
701336-07	LANE CLOSURES, 2L, 2W, WORK AREAS IN SERIES FOR SPEEDS ≥ 45 MPH
701501-06	URBAN LANE CLOSURE, 2L, 2W, UNDIVIDED
701901-08	TRAFFIC CONTROL DEVICES
780001-05	TYPICAL PAVEMENT MARKINGS
781001-04	TYPICAL APPLICATIONS RAISED REFLECTIVE PAVEMENT MARKERS

MIXTURE REQUIREMENTS

ROUTE	FAS 1780 (OLD US 50)
SECTION	(24-24-1)RS-4
COUNTIES	CLINTON
CONTRACT	76N32

DESCRIPTION	SMART - RESURFACING & PATCHING OF OLD US 50 FROM HILMES RD. TO 0.2 MI WEST OF CARTER ST AND JUST PATCHING FROM CARTER ST. TO IL 127
-------------	---

ADT (CONSTRUCTION YR):	6600
MU%	1.4
SU%	2.4
20 YR. ESAL'S:	0.73

MIXTURE USE	SURFACE	PATCHING	PARTIAL DEPTH PATCHING
AC/PG	PG 64-22	PG 64-22	PG 64-22
RAP % (MAX)	SEE SPECIAL PROVISION	SEE SPECIAL PROVISION	SEE SPECIAL PROVISION
DESIGN AIR VOIDS	4.0% @ Ndes=70	4.0% @ Ndes=70	4.0% @ Ndes=70
MIX COMPOSITION (GRADATION MIXTURE)	IL 9.5	IL 19.0	IL 9.5
FRICTION AGG	MIXTURE "D"	MIXTURE "B"	MIXTURE "C"
QUALITY MGMT PROGRAM	QCP	QC/QA	QC/QA

PLAN QUANTITIES FOR BITUMINOUS CONCRETE SURFACE COURSE ITEMS ARE CALCULATED USING A UNIT WEIGHT OF 112 LB/SQ YD/IN (59.8 KG/SQ M/25 MM THICKNESS).

GENERAL NOTES

① UTILITIES KNOWN TO HAVE FACILITIES WITHIN THE PROJECT AREA ARE AS FOLLOWS:

	AERIAL	BURIED
*AMEREN ILLINOIS (GAS & ELECTRIC)	X	X
*AT&T ILLINOIS (COMMUNICATIONS)	X	X
*VILLAGE OF BECKEMEYER (WATER & SANITARY SEWER)		X
*CITY OF CARLYLE (WATER & SANITARY SEWER)		X
*CARLYLE NORTH WATER COMPANY (WATER)		X
*CHARTER COMMUNICATIONS, INC. (CABLE TV)	X	X
*CLINTON COUNTY ELECTRIC COOPERATIVE, INC (ELECTRIC)	X	X
*NATURAL GAS PIPELINE COMPANY OF AMERICA (PIPELINE)		X

MEMBERS OF J.U.L.I.E. (800)-892-0123 ARE INDACATED BY*. NON-J.U.L.I.E. MEMBERS MUST BE NOTIFIED INDIVIDUALLY.

- ② NO SURVEY WAS PERFORMED FOR THIS PROJECT. THE PLANS WERE CREATED USING MICROFILM AND FIELD MEASUREMENTS.
- ③ ONLY SHORT-TERM PAVEMENT MARKING REMOVAL FROM FINAL SURFACE SHALL BE PAID FOR AS "SHORT TERM PAVEMENT MARKING REMOVAL".
- ④ NO OVERNIGHT LANE CLOSURES WILL BE PERMITTED.
- ⑤ THE PROPOSED PAVEMENT MARKINGS AND TEMPORARY PAVEMENT MARKINGS SHALL MATCH EXISTING PAVEMENT MARKINGS AND CONTINUE THROUGHOUT THE JOB AND TIE INTO THE EXISTING PAVEMENT MARKINGS AT THE END OF THE RESURFACING PART OF THE PROJECT.
- ⑥ THE CONTRACTOR SHALL PROTECT ALL SURVEY MONUMENTS TO ENSURE THEY ARE VISIBLE UPON COMPLETION OF THE RESURFACING. THE PROCESS ESTABLISHED BY THE CONTRACTOR SHALL BE APPROVED BY THE RESIDENT ENGINEER PRIOR TO CONSTRUCTION AND THE COST FOR THIS WORK SHALL BE INCLUDED IN THE COST OF THE RESURFACING.
- ⑦ THE THICKNESS OF HMA MIXTURE SHOWN ON THE PLANS IS THE NOMINAL THICKNESS. DEVIATIONS FROM THE NOMINAL THICKNESS WILL BE PERMITTED WHEN SUCH DEVIATIONS OCCURS DUE TO IRREGULARITIES IN THE EXISTING SURFACE OR BASE ON WHICH THE HMA MIXTURE IS PLACED.
- ⑧ MATERIAL TRANSFER DEVICE CAN OPERATE IN AN UNLOADED CONDITION ON STRUCTURE SN 014-0069.

COMMITMENTS

NONE

REV. - MS

MODEL: Default
 FILE NAME: P:\p1\p1room.dwg
 ILLINOIS.GOV:PWIDOT\Documents\DOT_Offices\District_8\Projects\0876N32\CADDData\CAD\Drawings\0876N32-shc-cover.dgn

USER NAME = millerraj	DESIGNED -	REVISED -
	DRAWN -	REVISED -
PLOT SCALE = 100.0000' / in.	CHECKED -	REVISED -
PLOT DATE = 1/17/2020	DATE -	REVISED -

**STATE OF ILLINOIS
DEPARTMENT OF TRANSPORTATION**

**GENERAL NOTES, COMMITMENTS
INDEX OF SHEETS, HIGHWAY STANDARDS**

SCALE: NTS SHEET 1 OF 1 SHEETS STA. TO STA.

F.A.S. RTE.	SECTION	COUNTY	TOTAL SHEETS	SHEET NO.
1780	(24,24-1)RS-4	CLINTON	9	2
			CONTRACT NO. 76N32	
ILLINOIS FED. AID PROJECT				

MODEL: Default
 FILE: \\nashc-pix\uplanroom\data\illinois.gov\PIWIDOT\Documents\IDOT_Offices\IDOT\DOT_CADDData\CAD\Projects\076N32-shc-cover.dgn

CODE NO.	ITEM	UNIT	TOTAL QUANTITY	100% STATE	
				CONSTR. CODE	
				ROADWAY	RURAL
X4421000	PARTIAL DEPTH PATCHING	TON	99	99	
X7030005	TEMPORARY PAVEMENT MARKING REMOVAL	SQ FT	5374	5374	
Z0033700	LONGITUDINAL JOINT SEALANT	FOOT	5605	5605	
Z0034105	MATERIAL TRANSFER DEVICE	TON	1308	1308	
Z0070100	SURVEY MONUMENT COVER ASSEMBLY	EACH	6	6	

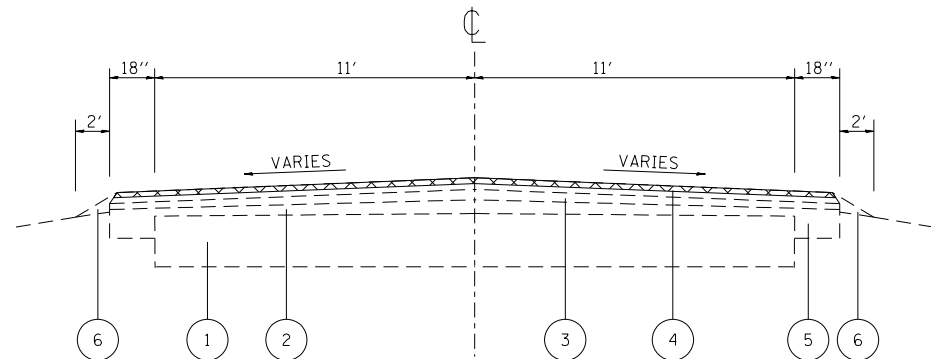
USER NAME = millerraj	DESIGNED -	REVISED -
	DRAWN -	REVISED -
PLOT SCALE = 100.0000' / in.	CHECKED -	REVISED -
PLOT DATE = 1/17/2020	DATE -	REVISED -

**STATE OF ILLINOIS
 DEPARTMENT OF TRANSPORTATION**

SUMMARY OF QUANTITIES

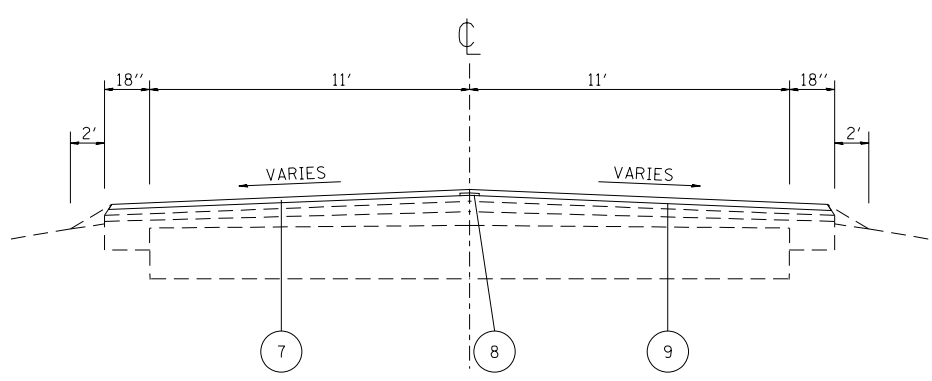
SCALE: NTS SHEET 2 OF 2 SHEETS STA. TO STA.

F.A.S. RTE.	SECTION	COUNTY	TOTAL SHEETS	SHEET NO.
1780	(24,24-1)RS-4	CLINTON	9	4
CONTRACT NO. 76N32			ILLINOIS FED. AID PROJECT	



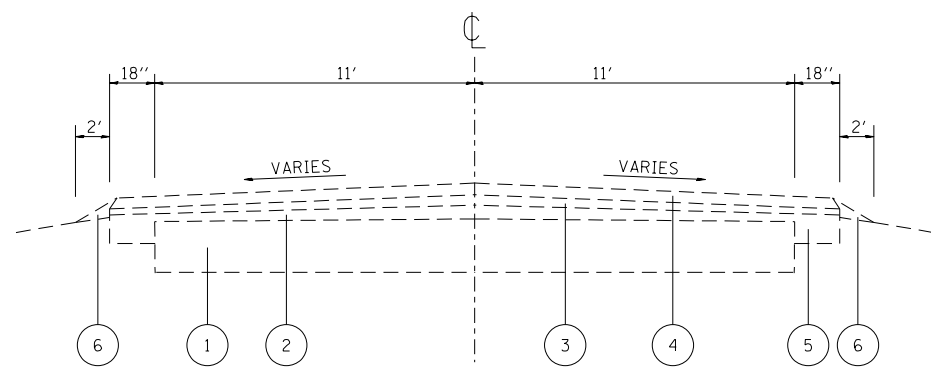
EXISTING TYPICAL SECTION

STA. 1439+70 TO STA. 1463+46.5
 BRIDGE OMISSION STA. 1463+46.5 TO STA. 1467+25.5
 STA. 1467+25.5 TO STA. 1499+54



PROPOSED TYPICAL SECTION

STA. 1439+70 TO STA. 1463+46.5
 BRIDGE OMISSION STA. 1463+46.5 TO STA. 1467+25.5
 STA. 1467+25.5 TO STA. 1499+54



EXISTING TYPICAL SECTION

STA. 1499+54 TO STA. 1705+81
 (PATCHING ONLY)

LEGEND

- ① EXISTING PCC PAVEMENT
- ② EXISTING RESURFACING
- ③ EXISTING LEVELING BINDER COURSE, 3/4"
- ④ EXISTING HMA CONCRETE SURFACE COURSE, MIX "D", CLASS I, 1 1/4"
- ⑤ EXISTING HMA SHOULDERS
- ⑥ EXISTING AGGREGATE SHOULDER
- ⑦ PROPOSED HMA SURFACE COURSE, IL -9.5, MIX "D", N70, 1 1/2"
- ⑧ PROPOSED LONGITUDINAL JOINT SEALANT
- ⑨ PROPOSED BITUMINOUS MATERIAL (TACK COAT)



MODEL: Default
 FILE: \\nrcs-pix\pub\room\dat\illinois\pwr\DOT\Documents\DOT_Offices\Illin\ct B\Projects\076N32\CADD\ata\CAD\sheet\076N32-shc-cover.dgn

USER NAME = millerraj	DESIGNED -	REVISED -
	DRAWN -	REVISED -
PLOT SCALE = 100.0000 ' / in.	CHECKED -	REVISED -
PLOT DATE = 1/17/2020	DATE -	REVISED -

**STATE OF ILLINOIS
 DEPARTMENT OF TRANSPORTATION**

TYPICAL SECTIONS

SCALE: NTS SHEET 1 OF 1 SHEETS STA. TO STA.

F.A.S. RTE.	SECTION	COUNTY	TOTAL SHEETS	SHEET NO.
1780	(24,24-1)RS-4	CLINTON	9	5
CONTRACT NO. 76N32				
		ILLINOIS	FED. AID PROJECT	

PARTIAL DEPTH PATCHING SCHEDULE #1						
STATION	EB/WB	LENGTH FT	WIDTH FT	PARTIAL DEPTH REMOVAL 2"		PARTIAL DEPTH PATCHING TON
				TYPE I	TYPE II	
				SQ YD	SQ YD	
1501+86	EB	4	11	4.9		0.6
1511+16	EB	4	11	4.9		0.6
1516+16	EB	4	11	4.9		0.6
1523+36	EB	6	11	7.3		1.0
1523+36	WB	6	11	7.3		1.0
1527+36	EB	4	11	4.9		0.6
1530+36	EB	6	11	7.3		1.0
1534+36	EB	6	11	7.3		1.0
1534+36	WB	6	11	7.3		1.0
1535+36	EB	6	11	7.3		1.0
1535+36	WB	6	11	7.3		1.0
1543+46	WB	12	11		14.7	1.8
1544+36	WB	12	11		14.7	1.8
1545+36	EB	12	11		14.7	1.8
1550+06	EB	4	11	4.9		0.6
1554+36	WB	12	11		14.7	1.8
1526+36	WB	12	22		29.3	3.4
1570+36	WB	10	11		12.2	1.4
1570+36	EB	10	11		12.2	1.4
1573+36	EB	4	11	4.9		0.6
1573+36	WB	4	11	4.9		0.6
1577+36	EB	4	11	4.9		0.6
1582+36	WB	10	11		12.2	1.4
1583+36	EB	12	11		14.7	1.8
1583+36	WB	12	11		14.7	1.8
1590+36	EB	4	11	4.9		0.6
1606+36	EB	4	11	4.9		0.6
1615+36	EB	4	11	4.9		0.6
1620+36	EB	4	11	4.9		0.6
1623+36	EB	4	11	4.9		0.6
1627+36	EB	4	11	4.9		0.6
1627+36	WB	4	11	4.9		0.6
1630+36	EB	6	11	7.3		1.0
1630+36	WB	6	11	7.3		1.0
1631+86	EB	4	11	4.9		0.6
1631+86	WB	4	11	4.9		0.6
1635+86	EB	12	11		14.7	1.8
1635+86	WB	12	11		14.7	1.8
1637+36	EB	10	11		12.2	1.4
1637+36	WB	10	11		12.2	1.4
SCHEDULE #1 SUB-TOTAL:				149.1	207.8	44.0

PARTIAL DEPTH PATCHING SCHEDULE #2						
STATION	EB/WB	LENGTH FT	WIDTH FT	PARTIAL DEPTH REMOVAL 2"		PARTIAL DEPTH PATCHING TON
				TYPE I	TYPE II	
				SQ YD	SQ YD	
1640+36	EB	6	11	7.3		1.0
1640+36	WB	6	11	7.3		1.0
1644+36	EB	6	11	7.3		1.0
1644+36	WB	6	11	7.3		1.0
1646+36	EB	10	11		12.2	1.4
1646+36	WB	10	11		12.2	1.4
1649+36	EB	10	11		12.2	1.4
1649+36	WB	10	11		12.2	1.4
1650+36	EB	10	11		12.2	1.4
1650+36	WB	10	11		12.2	1.4
1653+36	EB	6	11	7.3		1.0
1653+36	WB	6	11	7.3		1.0
1658+36	EB	10	11		12.2	1.4
1658+36	WB	10	11		12.2	1.4
1661+36	EB	10	11		12.2	1.4
1661+36	WB	10	11		12.2	1.4
1665+36	EB	6	11	7.3		1.0
1665+36	WB	6	11	7.3		1.0
1666+36	EB	10	11		12.2	1.4
1666+36	WB	10	11		12.2	1.4
1667+36	EB	10	11		12.2	1.4
1667+36	WB	10	11		12.2	1.4
1669+56	EB	10	11		12.2	1.4
1669+56	WB	10	11		12.2	1.4
1670+36	EB	10	11		12.2	1.4
1670+36	WB	10	11		12.2	1.4
1671+36	EB	16	11		19.6	2.2
1671+36	WB	16	11		19.6	2.2
1674+36	EB	4	11	4.9		0.6
1674+36	WB	4	11	4.9		0.6
1681+36	EB	12	22		29.3	3.4
1681+36	WB	12	22		29.3	3.4
SCHEDULE #2 SUB-TOTAL:				68.4	317.8	45.6
SCHEDULE #1 SUB-TOTAL:				149.1	207.8	44.0
ANTICIPATED FAILURES (10%)				22	53	9
TOTAL:				239	578	99

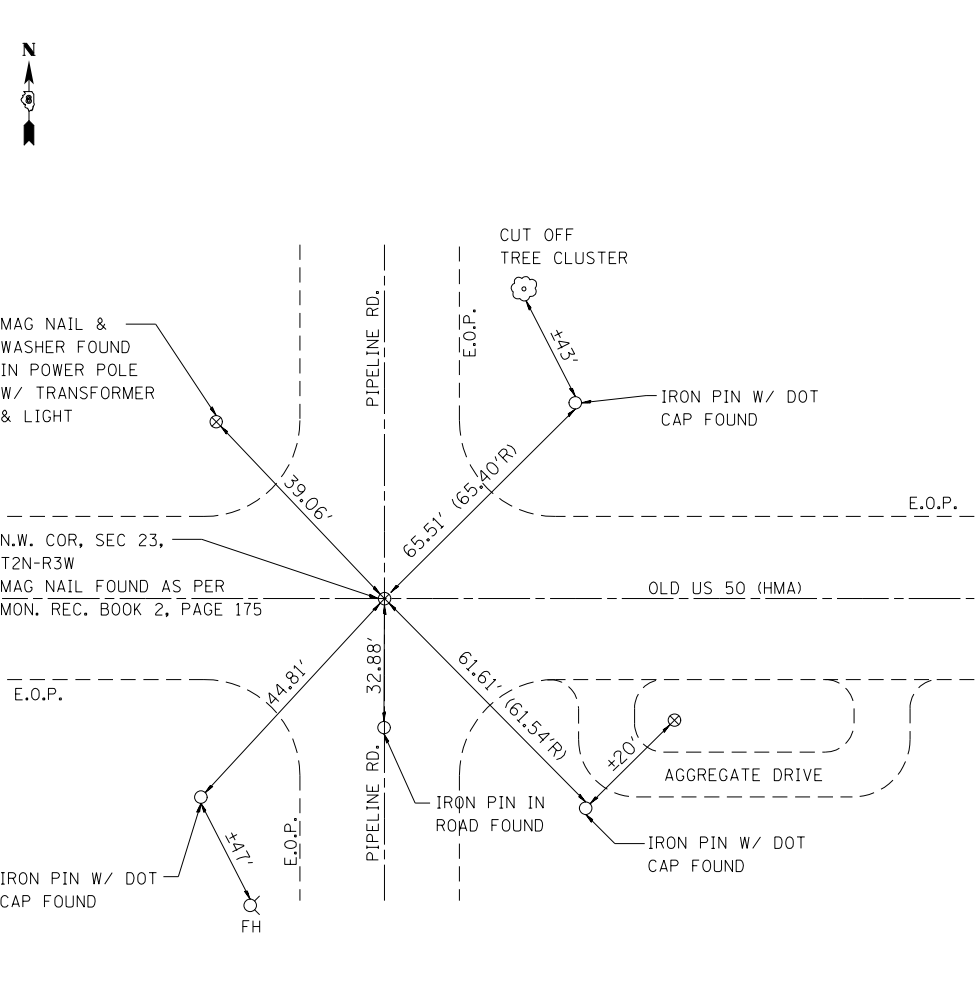
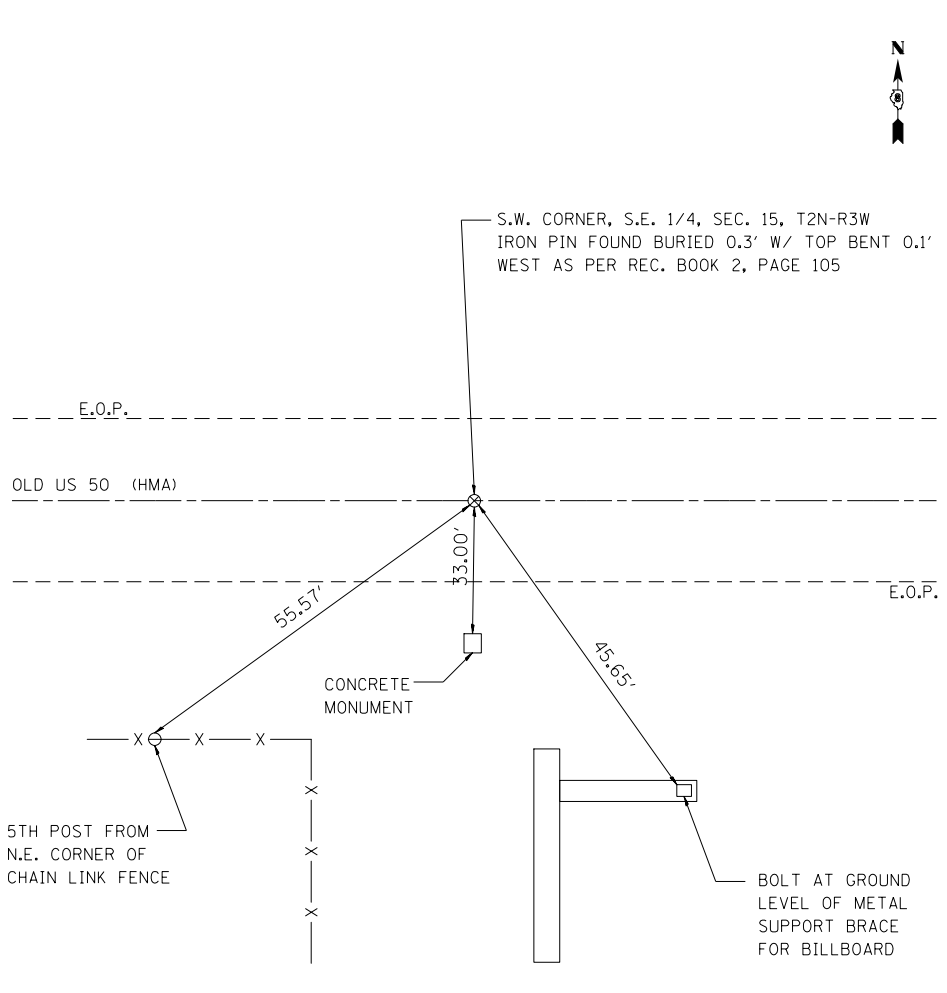
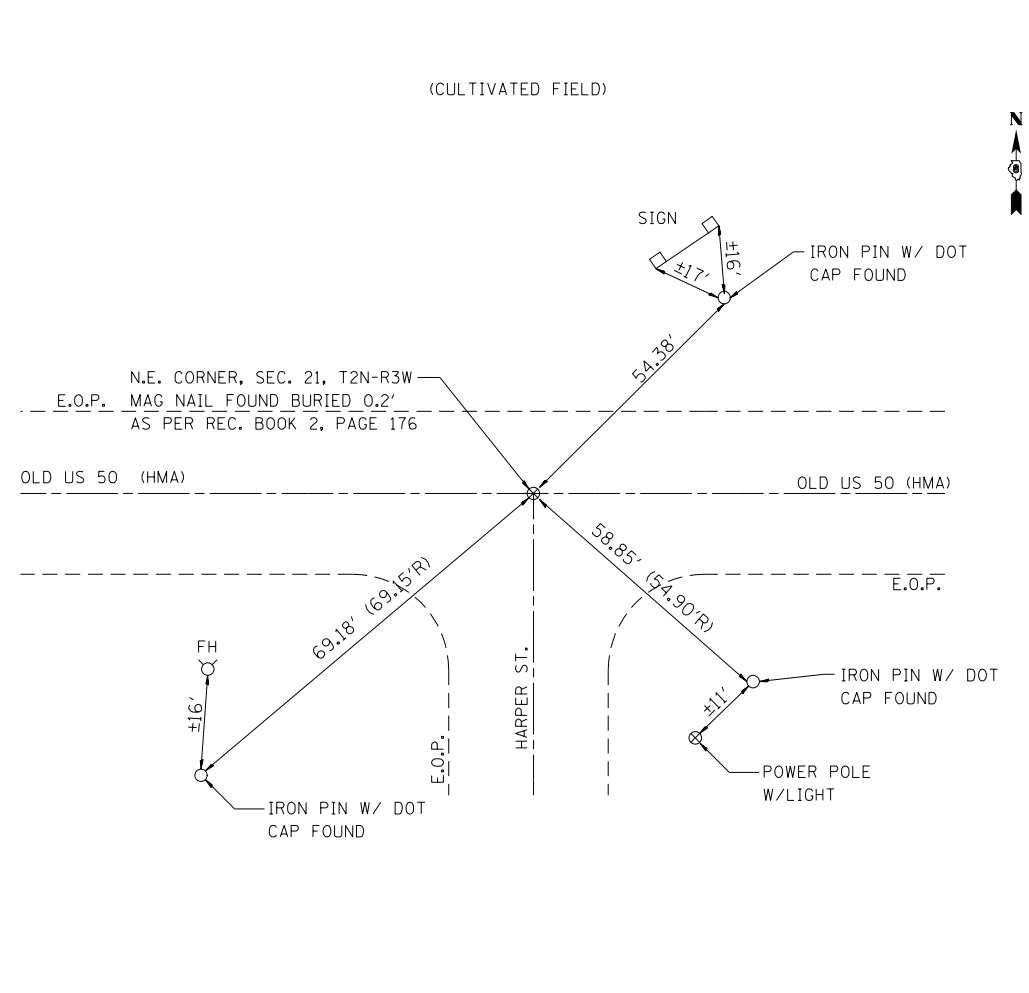
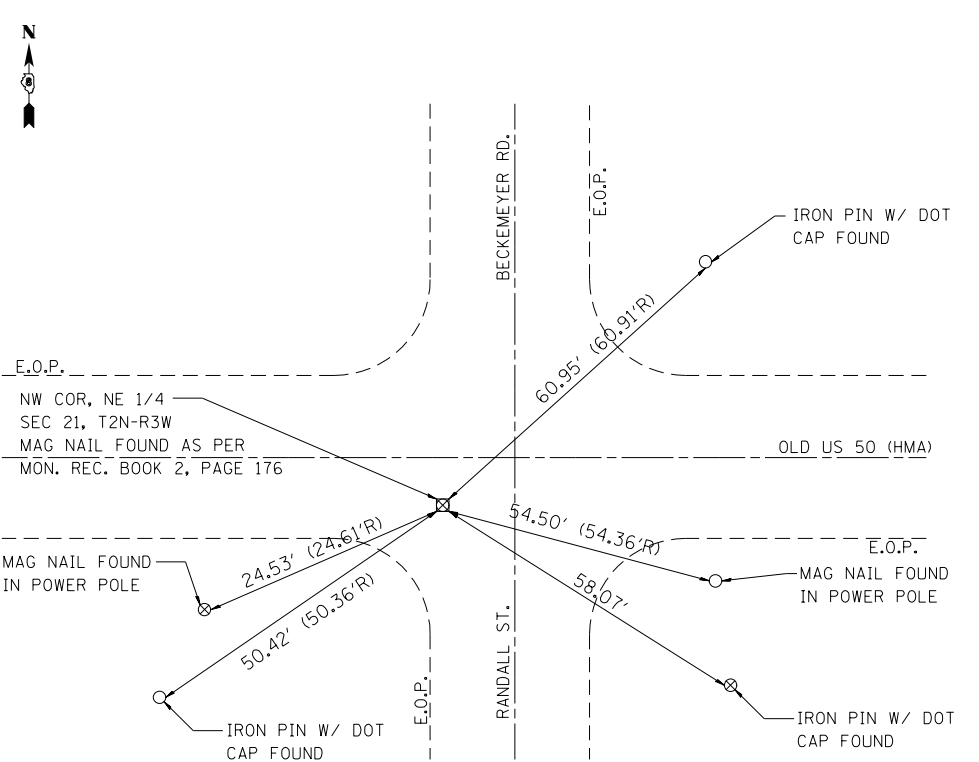
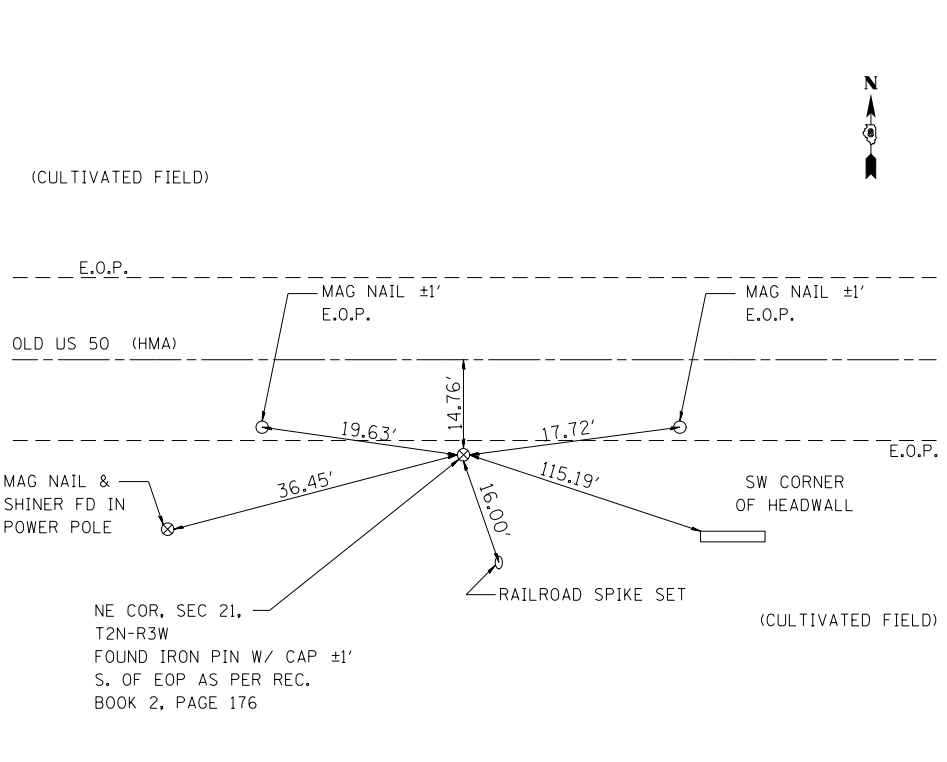
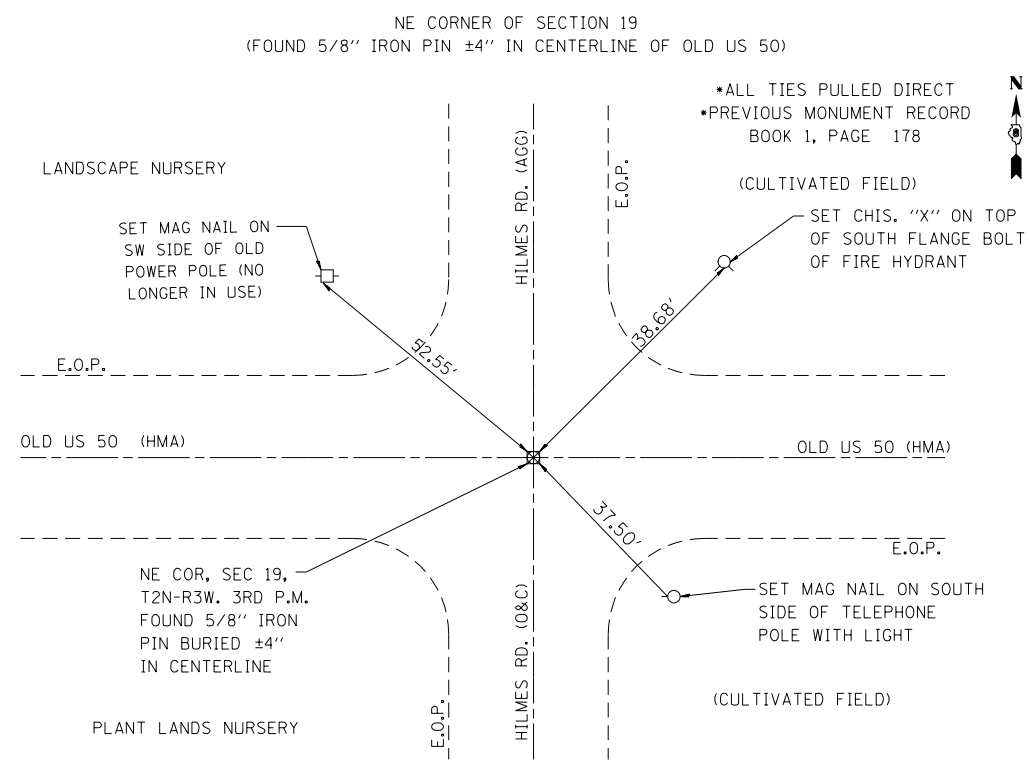
MODEL: Default
 FILE: \\nrcs-pkgs\pub\room\dat\illinois.gov\PWIDOT\Documents\DOT_Offices\Illin\ct @Projects\0676632\CADD\Drawings\0676632-shc-cover.dgn

USER NAME = millerraj	DESIGNED -	REVISED -
	DRAWN -	REVISED -
PLOT SCALE = 100.0000' / in.	CHECKED -	REVISED -
PLOT DATE = 1/17/2020	DATE -	REVISED -

**STATE OF ILLINOIS
DEPARTMENT OF TRANSPORTATION**

SCHEDULE OF QUANTITIES			
SCALE: NTS	SHEET 2	OF 2 SHEETS	STA. TO STA.

F.A.S. RTE.	SECTION	COUNTY	TOTAL SHEETS	SHEET NO.
1780	(24,24-1)RS-4	CLINTON	9	7
ILLINOIS FED. AID PROJECT			CONTRACT NO. 76N32	



MODEL: Default
 FILE: \\nrcs-pix\plannerroom\dat\illinois\pwr\WID\DOT\Documents\DOT_Offices\Illinet\B\Projects\076832\CADD\DATA\CAD\Inches\076832-shc-cover.dgn

USER NAME = millerraj	DESIGNED -	REVISED -
	DRAWN -	REVISED -
PLOT SCALE = 100.0000' / in.	CHECKED -	REVISED -
PLOT DATE = 1/17/2020	DATE -	REVISED -

STATE OF ILLINOIS
DEPARTMENT OF TRANSPORTATION

TIES & SURVEY MONUMENTS DETAILS

SCALE: NTS SHEET 1 OF 1 SHEETS STA. TO STA.

F.A.S. RTE.	SECTION	COUNTY	TOTAL SHEETS	SHEET NO.
1780	(24-24-1)RS-4	CLINTON	9	9
CONTRACT NO. 76N32				

ILLINOIS FED. AID PROJECT