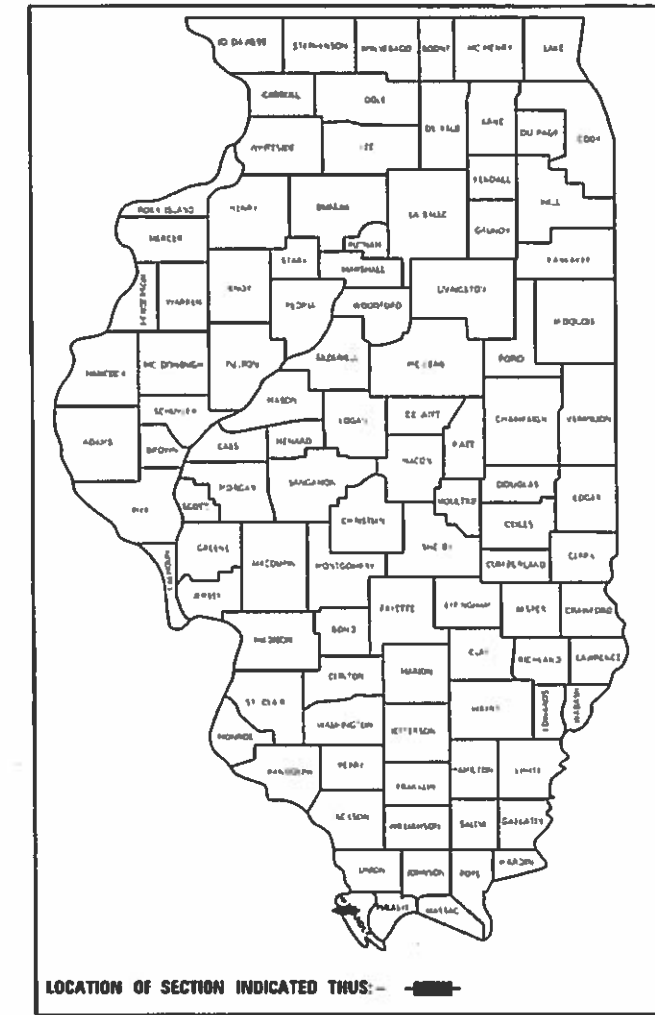


095

STATE OF ILLINOIS  
DEPARTMENT OF TRANSPORTATION

F.A.P. RTE.	SECTION	COUNTY	TOTAL SHEETS	SHEET NO.
312	(101-1,101)RS-8	ALEXANDER	26	1
		ILLINOIS	CONTRACT NO. 78765	

D-99-018-20



**PROPOSED  
HIGHWAY PLANS**

FAP ROUTE 312 (IL 146)  
SECTION (101-1,101)RS-8  
PROJECT NHPP-MGSJ(873)  
MILLING & RESURFACING  
ALEXANDER COUNTY

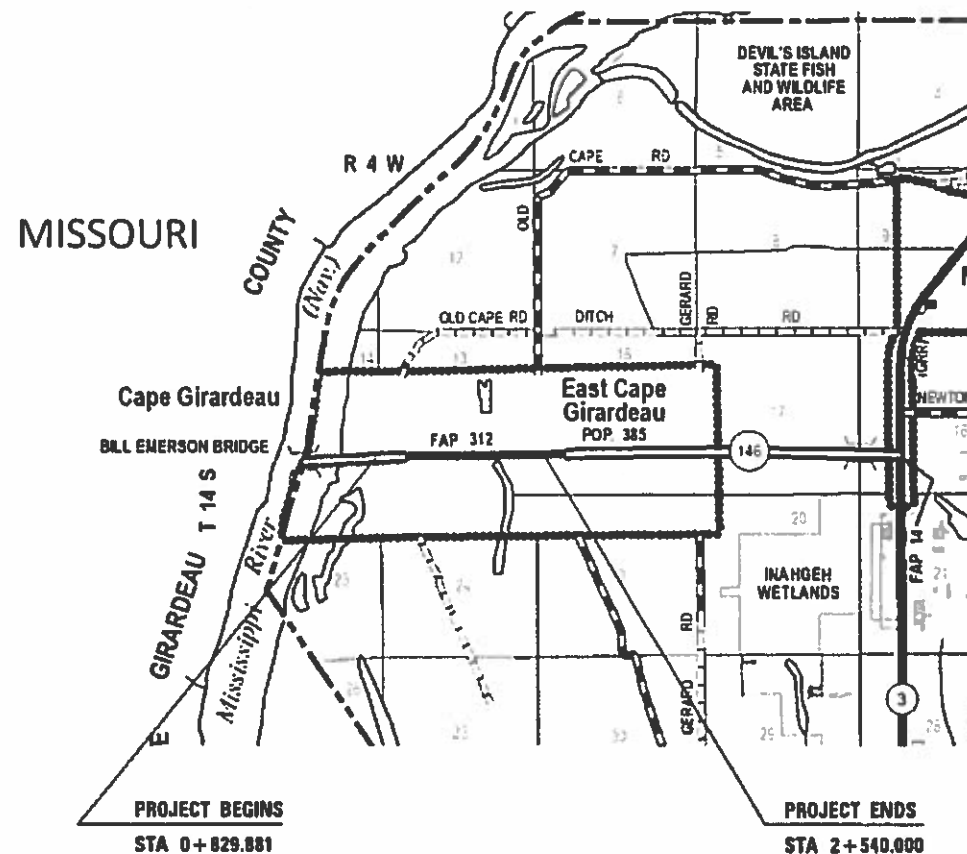
C-99-021-20

FOR INDEX OF SHEETS, SEE SHEET NO. 3  
FOR SUMMARY OF QUANTITIES, SEE SHEET NO. 5  
FOR STRUCTURAL PAVEMENT DESIGN  
INFORMATION, SEE SHEET NO. NA

TRAFFIC DATA IL 146 ALEXANDER COUNTY

IL-146: MP 0.00 TO 1.02 IL/ MO STATE LINE TO COMANCHE DR			
	2019	2020	2040
PV =	8,350	8,435	10,285
SU =	475	480	585
MU =	875	885	1,080
ADT =	9,700	9,800	11,950

**TOWNSHIPS**  
**McClure**



DESIGN DESIGNATION : NA  
COORDINATE SYSTEM : NA  
POSTED SPEED : 45 MPH

J.U.L.I.E.  
JOINT UTILITY LOCATION INFORMATION FOR EXCAVATION  
1-800-892-0123  
OR 811

PROJECT ENGINEER VALERIE ROLLA 1-618-351-5214  
PROJECT DESIGNER DARRYL LEFTWICH 1-618-351-5291

GROSS LENGTH = 5610.63 FT. = 1.063 MILES  
NET LENGTH = 5610.63 FT. = 1.063 MILES

CONTRACT NO. 78765

STATE OF ILLINOIS  
DEPARTMENT OF TRANSPORTATION

SUBMITTED Jan 31 2020  
Kurtz Roberts  
REGION FIVE ENGINEER

March 20 2020  
EA. ETS  
ENGINEER OF DESIGN AND ENVIRONMENT

March 20 2020  
Asmat Jan  
DIRECTOR OF HIGHWAYS PROJECT IMPLEMENTATION

PRINTED BY THE AUTHORITY  
OF THE STATE OF ILLINOIS



# INDEX OF SHEETS

SHEET NO	DESCRIPTION
1	COVER SHEET
2	SIGNATURE SHEET
3	INDEX OF SHEETS, HIGHWAY STANDARDS
4	GENERAL NOTES, MIX DESIGNS, MTD TABLE
5-6	SUMMARY OF QUANTITIES
7-10	TYPICALS (1-4)
11	RESURFACING SCHEDULE
12	TEMPORARY RAMPS SCHEDULE
13	PAVEMENT MARKING SCHEDULE
14	TEMPORARY & SHORT TERM PAVEMENT MARKING SCHEDULE
15	RAISED REFLECTIVE PAVEMENT MARKERS SCHEDULE
16-20	PLAN SHEETS - HMA SURFACE REMOVAL
21-25	PLAN SHEETS - PAVEMENT MARKING
26	TEMPORARY HMA TRANSITIONS, UNEVEN LANES INLAY DETAIL, ROUGH GROOVED SURFACE,

# HIGHWAY STANDARDS

- 000001-07\_STANDARD SYMBOLS ABBREVIATIONS & PATTERNS
- 001006 \_DECIMAL OF INCH & FOOT
- 701421-08\_LN CLOSURE MULTI LN - DAY OP ONLY 45 - 55 MPH
- 701426-09\_LN CLOSURE MULTI LN - INTERMITTANT OR MOVING OP 45 MPH OR MORE
- 701602-10\_URBAN LN CLOSURE MULTI LN 2W WITH BIDIRECT LEFT TURN LN
- 701901-08\_TRAF CNTRL DEVICES
- 780001-05\_TYPICAL PVMT MRKINGS
- 781001-04\_TYPICAL APP RAISED REFLC PVMT MRKRS

REV. - MS

MODEL: Default  
 FILE: Main: P:\uplanroom.dat\illinois.gov\PIV\DOT\Documents\DOT\_Offices\District 9\Project\78765\CADData\CAD\Sheets\DS\_78765-Sheets.dgn

USER NAME = leftwichd	DESIGNED -	REVISED -	<b>STATE OF ILLINOIS DEPARTMENT OF TRANSPORTATION</b>	<b>INDEX OF SHEETS HIGHWAY STANDARDS</b>		F.A.P. RTE.	SECTION	COUNTY	TOTAL SHEETS	SHEET NO.
	DRAWN -	REVISED -		312	(101-1,101)RS-8	ALEXANDER	26	3		
PLOT SCALE = 40.0000' / in.	CHECKED -	REVISED -				CONTRACT NO. 78765				
PLOT DATE = 1/31/2020	DATE -	REVISED -		SCALE:	SHEET OF SHEETS	STA. TO STA.	ILLINOIS FED. AID PROJECT			

# GENERAL NOTES

FACTORS USED FOR ESTIMATING PLAN QUANTITIES ARE AS FOLLOWS AND SHALL NOT BE USED FOR THE BASIS OF FINAL QUANTITIES:

ALL HOT MIX ASPHALT 2.016 TONS/CU. YD.

THE QUANTITY OF SHORT TERM PAVEMENT MARKING SHOWN IN THE PLANS IS BASED ON ONE APPLICATION EACH FOR THE HMA SURFACE REMOVAL, BINDER COURSE, AND SURFACE COURSE

THE CONTRACTOR SHALL STAMP STATIONING IN THE HOT MIX ASPHALT SURFACE AT 300 FT INTERVALS ON THE INSIDE EDGE OF THE OUTSIDE SHOULDER AND AS DIRECTED BY THE ENGINEER. THE STATION SYMBOL STAMPS USED SHALL BE FURNISHED BY THE CONTRACTOR. THEY SHALL BE 5 1/2 IN. TALL OF A DESIGN APPROVED BY THE ENGINEER, AND SHALL REMAIN THE PROPERTY OF THE CONTRACTOR.

EXISTING PIPE UNDERDRAIN OUTLETS IN THE FORESLOPES OR MEDIAN SLOPES SHALL BE PRESERVED AND PROTECTED DURING CONSTRUCTION. ANY DAMAGE TO AN UNDERDRAIN OUTLET RESULTING FROM CONSTRUCTION ACTIVITY SHALL BE REPAIRED AT THE CONTRACTOR'S EXPENSE.

HMA RESURFACING SHALL BE PLACED IN A SEQUENCE THAT WILL MINIMIZE THE TIME THE CENTERLINE EDGE IS EXPOSED TO TRAFFIC. WHEN AT THE END OF A DAY'S OPERATION THE EXPOSED CENTERLINE EDGE IS GREATER THAN 2,000 FT, THE CONTRACTOR SHALL BE REQUIRED TO PAVE IN THE ADJACENT LANE ON THE FOLLOWING WORK DAY. PRIOR TO WINTER SHUTDOWN, RESURFACING ON ADJACENT LANES IS TO BE BROUGHT UP TO THE SAME ELEVATION.

## HMA MIXTURE REQUIREMENTS TABLES

The following HMA mixture requirements are applicable for this project

Locations	Hot-Mix Asphalt Surface Course
Mixture Use(s):	Hot-Mix Asphalt Surface Course, Mix D, N70
AC/PG:	PG64-22
ABR % (Max):	See Special Provision
Design Air Voids:	4.0 %, 70 Gyration Design
Mixture Composition: (Gradation Mixture)	IL-9.5mm
Friction Aggregate:	D Surface
Mixture Weight:	112 lbs./Sq. Yd/in
Quality Management Program:	QCP
Sublot Size:	TBD

Locations	Hot-Mix Asphalt Binder Course
Mixture Use(s):	Hot-Mix Asphalt Binder Course, N70, IL-9.5FG
AC/PG:	PG64-22
ABR % (Max):	See Special Provision
Design Air Voids:	4.0 %, 70 Gyration Design
Mixture Composition: (Gradation Mixture)	IL-9.5FG
Friction Aggregate:	None
Mixture Weight:	112 lbs./Sq. Yd/in
Quality Management Program:	QCP
Sublot Size:	TBD

Locations	Hot-Mix Asphalt Shoulders
Mixture Use(s):	Hot-Mix Asphalt Surface Course, N30, IL-9.5L
AC/PG:	PG64-22
ABR % (Max):	See Special Provision
Design Air Voids:	4.0 %, 30 Gyration Design
Mixture Composition: (Gradation Mixture)	IL-9.5L
Friction Aggregate:	None
Mixture Weight:	112 lbs./Sq. Yd/in
Quality Management Program:	QCQA
Sublot Size:	NA

MTD CROSSING RESTRICTIONS TABLE

SN & CENTERLINE STATION ROUTE FAP 312 (IL-146)		EXISTING FILL HEIGHT OVER BOX CULVERT	THICKNESS OF EXISTING PAVEMENT OVER BOX CULVERT	MTD CROSSING RESTRICTIONS
EBL	WBL	FOOT	FOOT	
<b>MISSISSIPPI RIVER BRIDGE</b>				
002-0036	- STA 0+828.247	002-0036	- STA 0+831.517	NO MTD ALLOWED

MODEL: Default  
 FILE: \\nas0101.pw.state.il.us\pub\haronom.dta\illinois.gov\PWIDOT\Documents\DOT\_Offices\District 9\Projects\78765\CAAD\Bids\CAD\Drawings\78765-Sheets.dgn

USER NAME = leftwichd	DESIGNED -	REVISED -
	DRAWN -	REVISED -
PLOT SCALE = 40.0000 ' / in.	CHECKED -	REVISED -
PLOT DATE = 1/31/2020	DATE -	REVISED -

**STATE OF ILLINOIS  
DEPARTMENT OF TRANSPORTATION**

**GENERAL NOTES  
MIX DESIGN TABLE**

SCALE: SHEET OF SHEETS STA. TO STA.

F.A.P. RTE.	SECTION	COUNTY	TOTAL SHEETS	SHEET NO.
312	(101-1,101)RS-8	ALEXANDER	26	4
			CONTRACT NO. 78765	
		ILLINOIS FED. AID PROJECT		

# SUMMARY OF QUANTITIES

COUNTY:	ALEXANDER
ROUTE:	IL 146
FUNDING:	80% FED / 20% STATE
LOCATION:	RURAL
	ROADWAY
	0005

CODE NUMBER	ITEM DESCRIPTION	UNIT	
40600290	BITUMINOUS MATERIALS (TACK COAT)	POUND	30,497
40600990	TEMPORARY RAMP	SQ YD	413
40602970	HOT-MIX ASPHALT BINDER COURSE, IL-9.5FG, N70	TON	2,643
40604012	HOT-MIX ASPHALT SURFACE COURSE, IL-9.5FG, MIX "D", N70	TON	3,161
44000160	HOT-MIX ASPHALT SURFACE REMOVAL, 2 3/4"	SQ YD	49,019
48203100	HOT-MIX ASPHALT SHOULDERS	TON	1,772
67100100	MOBILIZATION	L SUM	1
70100310	TRAFFIC CONTROL AND PROTECTION, STANDARD 701421	L SUM	1
70102632	TRAFFIC CONTROL AND PROTECTION, STANDARD 701602	L SUM	1
70107025	CHANGEABLE MESSAGE SIGN	CAL DA	28
70300100	SHORT TERM PAVEMENT MARKING	FOOT	5,340
70300150	SHORT TERM PAVEMENT MARKING REMOVAL	SQ FT	1,784

MODEL: Default  
FILE: \\blm1c01.pw.uspbarn.com\data\illinois.gov\PWIDOT\Documents\DOT\_Offices\District\_9\Projects\78765\CADData\CAD\Sheet09\_78765-Sheets.dgn

USER NAME = leftwichd	DESIGNED -	REVISED -
	DRAWN -	REVISED -
PLOT SCALE = 40.0000 ' / in.	CHECKED -	REVISED -
PLOT DATE = 1/31/2020	DATE -	REVISED -

**STATE OF ILLINOIS  
DEPARTMENT OF TRANSPORTATION**

**SUMMARY OF QUANTITIES  
SHEET 1 OF 2**

F.A.P. RTE.	SECTION	COUNTY	TOTAL SHEETS	SHEET NO.
312	(101-1,101)RS-8	ALEXANDER	26	5
CONTRACT NO. 78765				
ILLINOIS FED. AID PROJECT				

SCALE:      SHEET      OF      SHEETS      STA.      TO STA.

# SUMMARY OF QUANTITIES - CONT

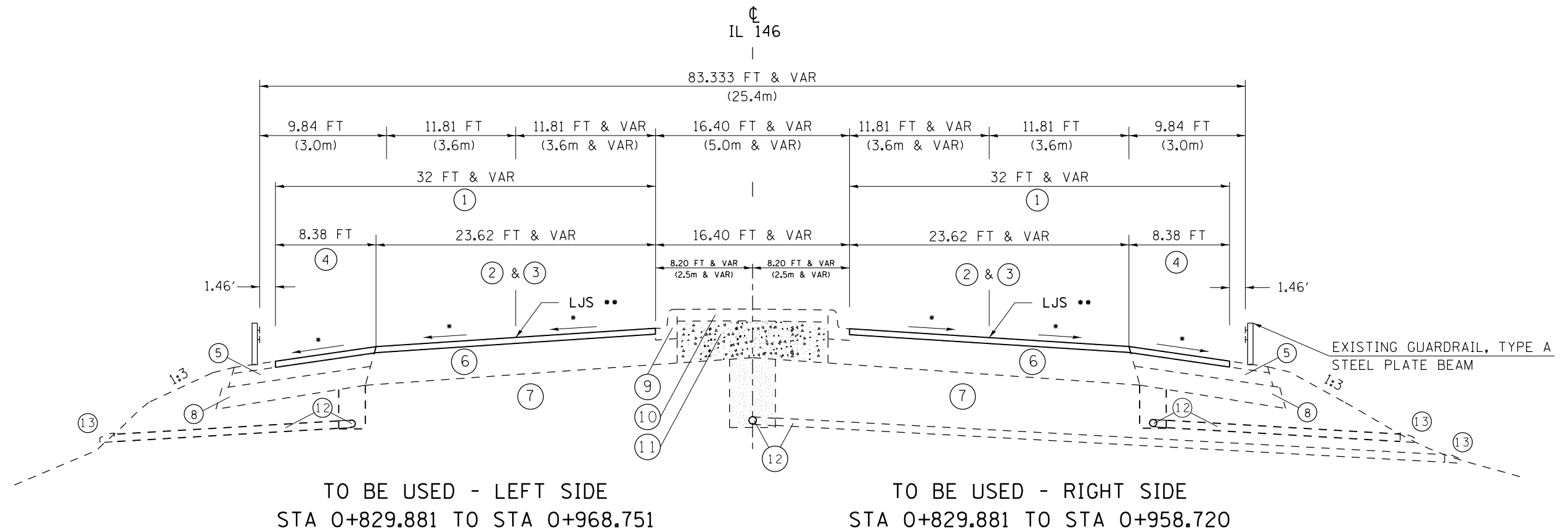
COUNTY:	ALEXANDER
ROUTE:	IL 146
FUNDING:	80% FED / 20% STATE
LOCATION:	RURAL
	ROADWAY
	0005

CODE NUMBER	ITEM DESCRIPTION	UNIT	QUANTITY
70300210	TEMPORARY PAVEMENT MARKING LETTERS AND SYMBOLS	SQ FT	332.8
70300220	TEMPORARY PAVEMENT MARKING - LINE 4"	FOOT	32,368
70300260	TEMPORARY PAVEMENT MARKING - LINE 12"	FOOT	2,741
* 78000100	THERMOPLASTIC PAVEMENT MARKING - LETTERS AND SYMBOLS	SQ FT	332.8
* 78000200	THERMOPLASTIC PAVEMENT MARKING - LINE 4"	FOOT	32,368
* 78000600	THERMOPLASTIC PAVEMENT MARKING - LINE 12"	FOOT	2,741
* 78100100	RAISED REFLECTIVE PAVEMENT MARKER	EACH	356
78300200	RAISED REFLECTIVE PAVEMENT MARKER REMOVAL	EACH	356
X0325754	REPLACEMENT OF SENSORS FOR ROADWAY WEATHER INFORMATION SYSTEM	L SUM	1
Z0033700	LONGITUDINAL JOINT SEALANT	FOOT	21,172
Z0034105	MATERIAL TRANSFER DEVICE	TON	5,804

\* SPECIALTY ITEM

MODEL: Default  
 FILE: \\blm1c1.pw.us\pub\lanscom\dat\illinois\pwr\DOT\Documents\DOT\_Offices\lansct\9\Project\78765\CAD\Drawings\DOT\_78765-Sheets.dgn

# TYPICAL SECTION 1



- ① PROPOSED HMA SURFACE REMOVAL, 2<sup>3</sup>/<sub>4</sub>"
- ② PROPOSED HMA BINDER, 1<sup>1</sup>/<sub>4</sub>"
- ③ PROPOSED HMA SURFACE, 1<sup>1</sup>/<sub>2</sub>"
- ④ PROPOSED HMA SHOULDER, 2<sup>3</sup>/<sub>4</sub>"
- ⑤ EXISTING HMA SHOULDER - 8"
- ⑥ EXISTING HMA PAVEMENT - 15"
- ⑦ EXISTING LIME MODIFIED SOILS 10"

- ⑧ EXISTING SUB-BASE GRANULAR MATERIAL, TYPE C
- ⑨ EXISTING COMBINATION CONCRETE CURB AND GUTTER, TYPE B-15.60
- ⑩ EXISTING CONCRETE MEDIAN SURFACE, 100MM
- ⑪ EXISTING COURSE AGGREGATE, CA7 OR CA11
- ⑫ EXISTING PIPE UNDERDRAIN - 4"
- ⑬ EXISTING CONCRETE HEADWALL FOR PIPE DRAINS

\* MATCH EXISTING SLOPES  
 \*\* LONGITUDINAL JOINT SEALANT TO BE APPLIED BETWEEN BINDER & SURFACE LIFTS

MODEL: Default  
 FILE: Model: 312\planroom.dwg  
 PROJECT: 78765\CADD\Drawings\DOT - Office\Drawings\9\Projects\78765\CADD\Drawings\DOT - Office\Drawings\9\Projects\78765-Sheets.dwg

USER NAME = leftwichtd	DESIGNED -	REVISED -
	DRAWN -	REVISED -
PLOT SCALE = 40.0000 ' / in.	CHECKED -	REVISED -
PLOT DATE = 1/31/2020	DATE -	REVISED -

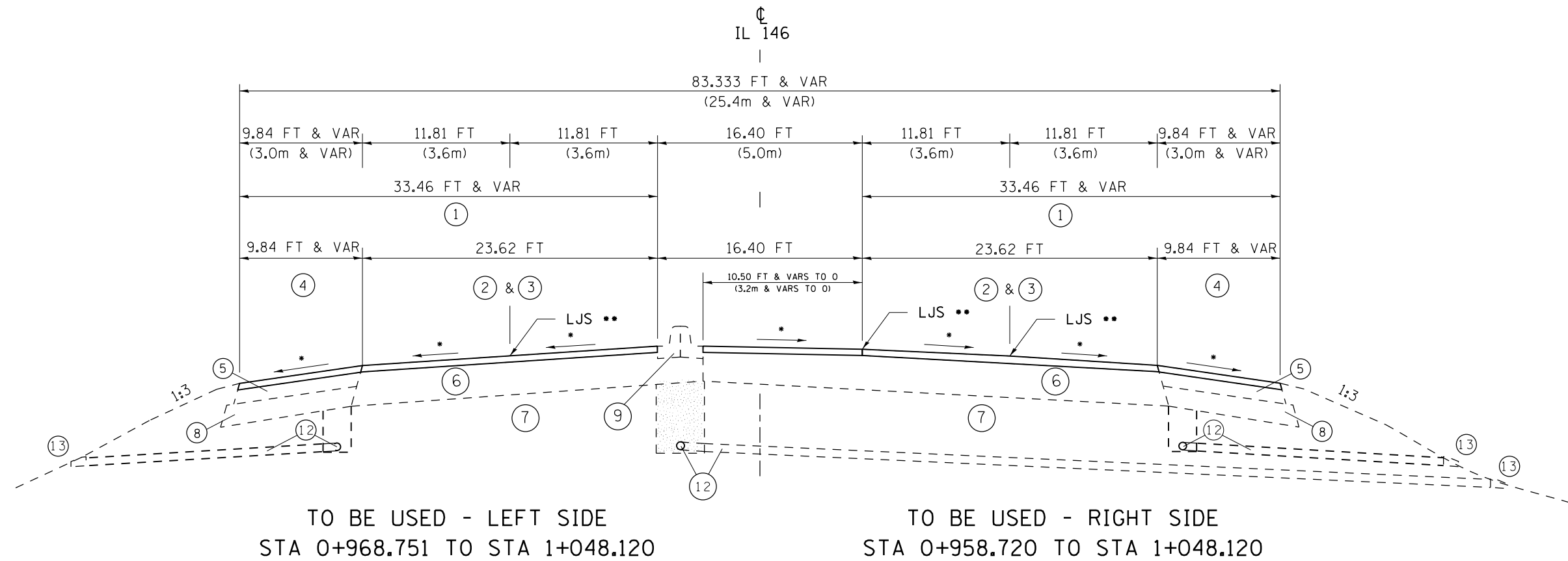
**STATE OF ILLINOIS**  
**DEPARTMENT OF TRANSPORTATION**

**TYPICAL SECTIONS**  
**SHEET 1 OF 4**

SCALE: SHEET OF SHEETS STA. TO STA.

F.A.P. RTE.	SECTION	COUNTY	TOTAL SHEETS	SHEET NO.
312	(101-1,101)RS-8	ALEXANDER	26	7
			CONTRACT NO. 78765	
ILLINOIS FED. AID PROJECT				

# TYPICAL SECTION 2



- ① PROPOSED HMA SURFACE REMOVAL, 2<sup>3</sup>/<sub>4</sub>"
- ② PROPOSED HMA BINDER, 1<sup>1</sup>/<sub>4</sub>"
- ③ PROPOSED HMA SURFACE, 1<sup>1</sup>/<sub>2</sub>"
- ④ PROPOSED HMA SHOULDER, 2<sup>3</sup>/<sub>4</sub>"
- ⑤ EXISTING HMA SHOULDER - 8"
- ⑥ EXISTING HMA PAVEMENT - 15"
- ⑦ EXISTING LIME MODIFIED SOILS 10"

- ⑧ EXISTING SUB-BASE GRANULAR MATERIAL, TYPE C
- ⑨ EXISTING COMBINATION CONCRETE CURB AND GUTTER, TYPE B-15.60
- ⑩ EXISTING CONCRETE MEDIAN SURFACE, 100MM
- ⑪ EXISTING COURSE AGGREGATE, CA7 OR CA11
- ⑫ EXISTING PIPE UNDERDRAIN - 4"
- ⑬ EXISTING CONCRETE HEADWALL FOR PIPE DRAINS

\* MATCH EXISTING SLOPES  
 \*\* LONGITUDINAL JOINT SEALANT TO BE APPLIED BETWEEN BINDER & SURFACE LIFTS

MODEL: Default  
FILE: h:\mhc\p\pub\haronom.dwg\illinois\dot\Documents\DOT\_Offices\DOT\9\Projects\78765\CADD\Drawings\9\_78765-Sheets.dwg

USER NAME = leftwichd	DESIGNED -	REVISED -
	DRAWN -	REVISED -
PLOT SCALE = 40.0000 ' / in.	CHECKED -	REVISED -
PLOT DATE = 1/31/2020	DATE -	REVISED -

**STATE OF ILLINOIS  
DEPARTMENT OF TRANSPORTATION**

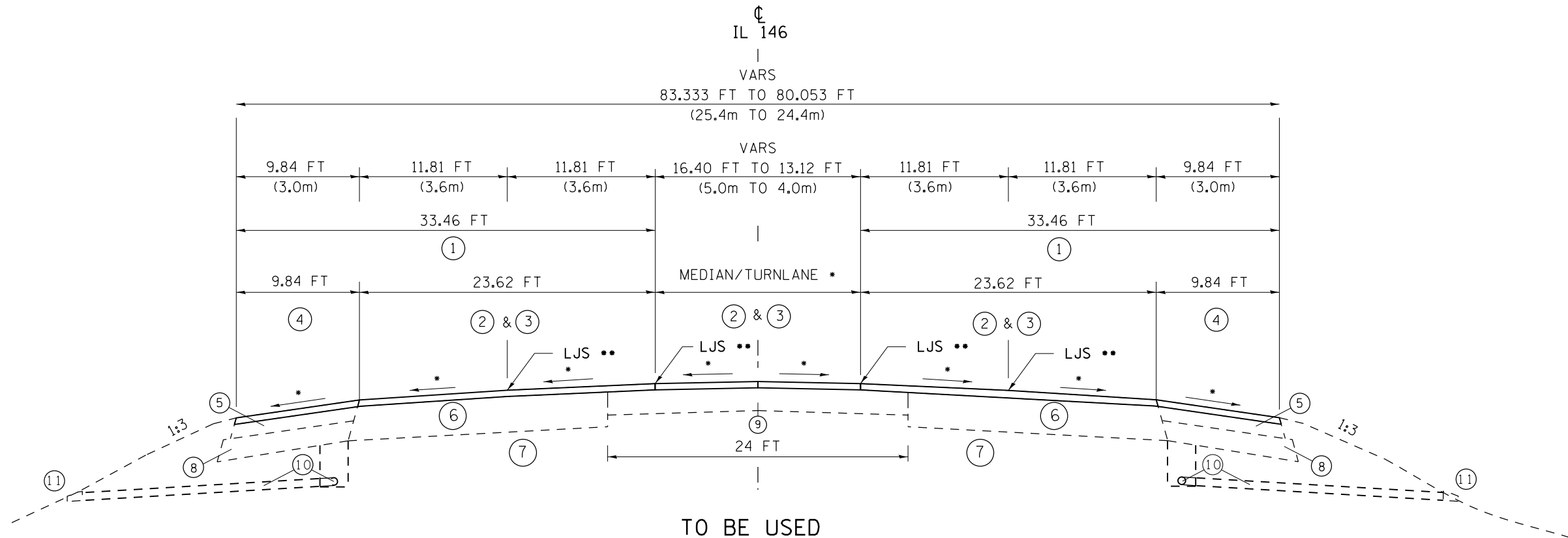
**TYPICAL SECTIONS  
SHEET 2 OF 4**

SCALE:      SHEET      OF      SHEETS      STA.      TO      STA.

F.A.P. RTE.	SECTION	COUNTY	TOTAL SHEETS	SHEET NO.
312	(101-1,101)RS-8	ALEXANDER	26	8
CONTRACT NO. 78765			ILLINOIS FED. AID PROJECT	



# TYPICAL SECTION 3



TO BE USED

- STA 1+048.120 TO STA 1+610.000 \* (MEDIAN WIDTH = 16.40 FT)
- STA 1+610.000 TO STA 1+640.000 \* (MEDIAN VARS = 16.40 FT TO 13.12 FT)
- STA 1+640.000 TO STA 1+649.000 \* (MEDIAN WIDTH = 13.12 FT)
- STA 2+070.000 TO STA 2+540.000 \* (MEDIAN WIDTH = 13.12 FT)

- ① PROPOSED HMA SURFACE REMOVAL, 2<sup>3</sup>/<sub>4</sub>"
- ② PROPOSED HMA BINDER, 1<sup>1</sup>/<sub>4</sub>"
- ③ PROPOSED HMA SURFACE, 1<sup>1</sup>/<sub>2</sub>"
- ④ PROPOSED HMA SHOULDER, 2<sup>3</sup>/<sub>4</sub>"
- ⑤ EXISTING HMA SHOULDER - 8"
- ⑥ EXISTING HMA PAVEMENT - 15"
- ⑦ EXISTING LIME MODIFIED SOILS 10"
- ⑧ EXISTING SUB-BASE GRANULAR MATERIAL, TYPE C
- ⑨ EXISTING OLD EXISTING PAVEMENT
- ⑩ EXISTING PIPE UNDERDRAIN - 4"
- ⑪ EXISTING CONCRETE HEADWALL FOR PIPE DRAINS

\* MATCH EXISTING SLOPES  
 \*\* LONGITUDINAL JOINT SEALANT TO BE APPLIED BETWEEN BINDER & SURFACE LIFTS

MODEL: Default  
 FILE: h:\mhc\p\pub\haronom.dwg\illinois\p\p\DOT\Documents\DOT\_Offices\Default\_9\Project\78765\CADD\Sheet\09\_78765-Sheet3.dgn

USER NAME = leftwichd	DESIGNED -	REVISED -
	DRAWN -	REVISED -
PLOT SCALE = 40.0000 ' / in.	CHECKED -	REVISED -
PLOT DATE = 1/31/2020	DATE -	REVISED -

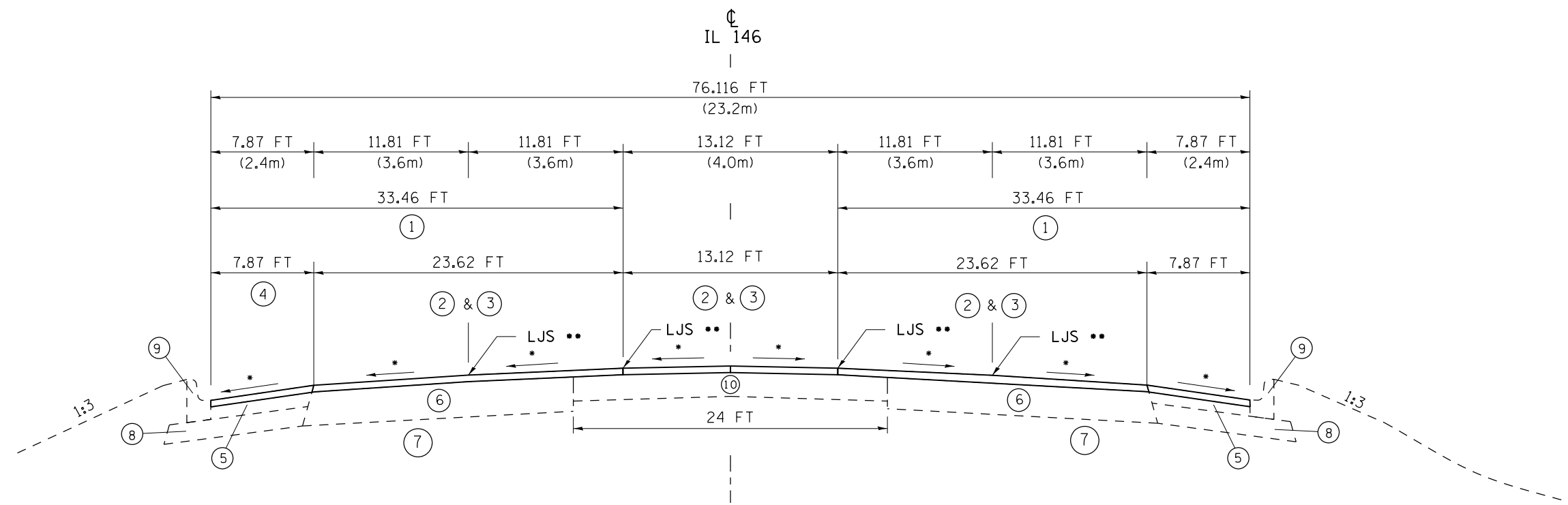
STATE OF ILLINOIS  
 DEPARTMENT OF TRANSPORTATION

TYPICAL SECTIONS  
 SHEET 3 OF 4

SCALE: SHEET OF SHEETS STA. TO STA.

F.A.P. RTE.	SECTION	COUNTY	TOTAL SHEETS	SHEET NO.
312	(101-1,101)RS-8	ALEXANDER	26	9
CONTRACT NO. 78765				
ILLINOIS FED. AID PROJECT				

# TYPICAL SECTION 4



TO BE USED  
STA 1+649.000 TO STA 2+070.000

- ① PROPOSED HMA SURFACE REMOVAL, 2<sup>3</sup>/<sub>4</sub>"
- ② PROPOSED HMA BINDER, 1<sup>1</sup>/<sub>4</sub>"
- ③ PROPOSED HMA SURFACE, 1<sup>1</sup>/<sub>2</sub>"
- ④ PROPOSED HMA SHOULDER, 2<sup>3</sup>/<sub>4</sub>"
- ⑤ EXISTING HMA SHOULDER - 8"

- ⑥ EXISTING HMA PAVEMENT - 15"
- ⑦ EXISTING LIME MODIFIED SOILS 10"
- ⑧ EXISTING SUB-BASE GRANULAR MATERIAL, TYPE C
- ⑨ EXISTING CONCRETE CURB AND GUTTER
- ⑩ OLD EXISTING PAVEMENT

\* MATCH EXISTING SLOPES  
\*\* LONGITUDINAL JOINT SEALANT TO BE APPLIED BETWEEN BINDER & SURFACE LIFTS

MODEL: Default  
FILE: h:\mhc\p\pub\haronom.dwg\illinois\p\p\DOT\Documents\DOT\_Offices\Illinois\9\Projects\78765\CADD\Sheet\09\_78765-Sheets.dgn

USER NAME = leftwichd	DESIGNED -	REVISED -
	DRAWN -	REVISED -
PLOT SCALE = 40.0000 ' / in.	CHECKED -	REVISED -
PLOT DATE = 1/31/2020	DATE -	REVISED -

**STATE OF ILLINOIS  
DEPARTMENT OF TRANSPORTATION**

**TYPICAL SECTIONS  
SHEET 4 OF 4**

SCALE: SHEET OF SHEETS STA. TO STA.

F.A.P. RTE.	SECTION	COUNTY	TOTAL SHEETS	SHEET NO.
312	(101-1,101)RS-8	ALEXANDER	26	10
CONTRACT NO. 78765				
ILLINOIS FED. AID PROJECT				



# TEMPORARY RAMPS

LOCATION	FOR QUANTITY CALCULATIONS ONLY					COMMENT
	TRANSITION RATE	LENGTH	WIDTH	COUNT	AREA	
IL 146 - EAST CAPE	FT:1	FT	FT	#	SQ YD	
JOB START - STA 0+829.881	40	9.2	37.5	2	77	AFTER MILLING
	40	5.0	37.5	2	42	AFTER BINDER
SIDE ROADS, STREETS & ENTRANCES	20	4.6	30	11	169	AFTER MILLING
JOB END - STA 2+540.0	40	9.2	80	1	82	AFTER MILLING
	40	5.0	80	1	44	AFTER BINDER
					413	

MODEL: Default  
 FILE: \\blm1c1.pw.uspbarn.com\data\illinois.gov\PW\DOT\Documents\DOT\_Offices\District 9\Projects\78765\CAAD\Bids\CAD\Sheets\09\_78765-Sheets.dgn

USER NAME = leftwichd PLOT SCALE = 40.0000 ' / in. PLOT DATE = 1/31/2020	DESIGNED - DRAWN - CHECKED - DATE -	REVISED - REVISED - REVISED - REVISED -	<b>STATE OF ILLINOIS DEPARTMENT OF TRANSPORTATION</b>	<b>RESURFACING SCHEDULE</b>	F.A.P. RTE. 312	SECTION (101-1,101)RS-8	COUNTY ALEXANDER	TOTAL SHEETS 26	SHEET NO. 12
				SCALE:      SHEET      OF      SHEETS      STA.      TO STA.	CONTRACT NO. 78765				
				ILLINOIS FED. AID PROJECT					



# TEMPORARY & SHORT TERM PAVEMENT MARKING SCHEDULES

LOCATION	FOR QUANTITY CALCULATIONS ONLY				TEMP PAINT PAVEMENT MARKING			SHORT TERM PAVEMENT MARKING		
	DESCRIPTION	IMPOSED ENGLISH STATION		SECTION LENGTH	LINES		LETTERS & SYMBOLS	WHITE	YELLOW	REMOVAL
	STATION	TO	STATION		4 IN	12 IN				
IL 146 - EAST CAPE										
BRIDGE ABUTMENT TO STA 0+880.0	222+23.82	TO	223+88.25	164.4	1070			66		22
STA 0+880.0 TO STA 1+054.1	223+88.25	TO	229+59.45	571.2	2572			229		77
STA 1+054.1 TO STA 1+085.0	229+59.45	TO	230+60.82	101.4	762	29	36.4	133	41	58
COLYER RD LT -- LEVEE RD RT	230+60.82	TO	231+61.22	100.4	252			41		14
STA 1+115.6 TO STA 1+146.3	231+61.22	TO	232+61.94	100.7	757	29	36.4	133	41	58
STA 1+146.3 TO STA 1+200.3	232+61.94	TO	234+39.11	177.2	1153	128		71	71	48
STA 1+200.3 TO STA 1+610.0	234+39.11	TO	247+83.27	1344.2	8739	1560		538	538	359
STA 1+610.0 TO STA 1+632.0	15+57.75	TO	16+29.93	72.2	471	84		29	29	20
COMANCHE ROAD TO VIRGINIA DRIVE	16+29.93	TO	31+65.36	1535.4	7678		187.2	1479	615	698
STA 2+100.0 TO STA 2+372.0	31+65.36	TO	40+57.75	892.4	5802	826		357	357	238
STA 2+372.0 TO STA 2+426.0	40+57.75	TO	42+34.92	177.2	1153	85		71	71	48
STA 2+426.0 TO STA 2+460.8	42+34.92	TO	43+49.01	114.1	630		36.4	141	23	55
BADER LANE	43+49.01	TO	43+91.74	42.7	22			18		6
STA 2+473.8 TO STA 2+506.8	43+91.74	TO	45+00.01	108.3	597		36.4	137	22	53
STA 2+506.8 TO STA 2+540.0	45+00.01	TO	46+08.93	108.9	710			44	45	30
					32368	2741	332.8	5340		1784

MODEL: Default  
 FILE: \\hpc1\pub\hpc\com\dat\illinois\gov\RWIDOT\Documents\DOT\_Offices\District\_9\Projects\78765\CAAD\Drawings\DOT\_78765-Sheets.dgn

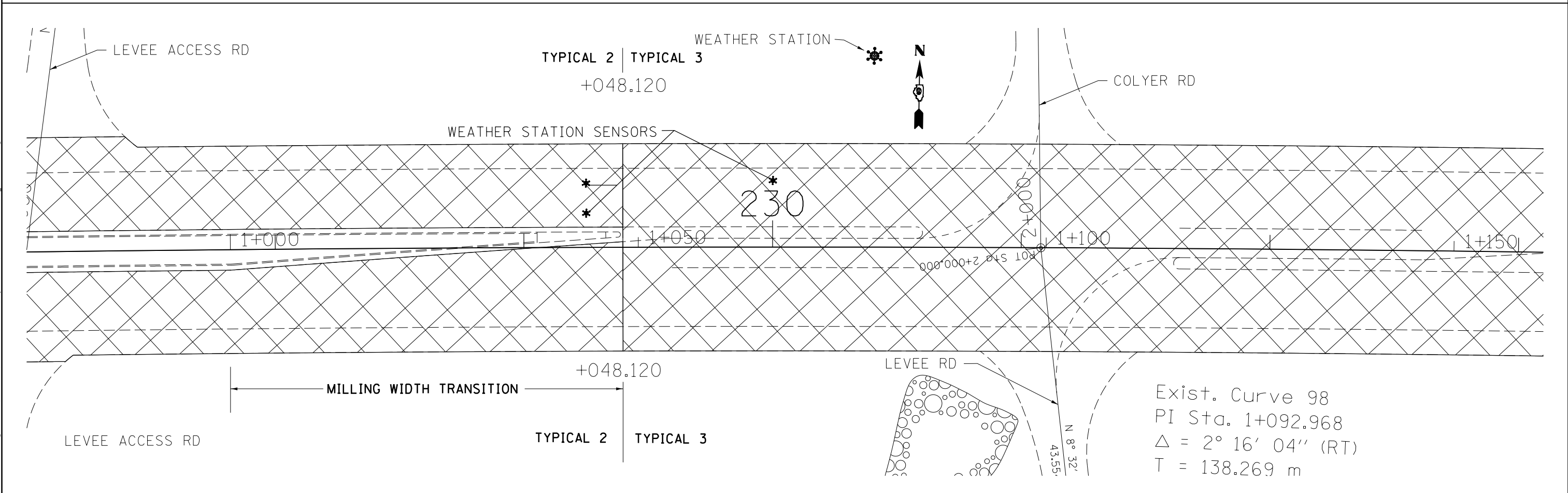
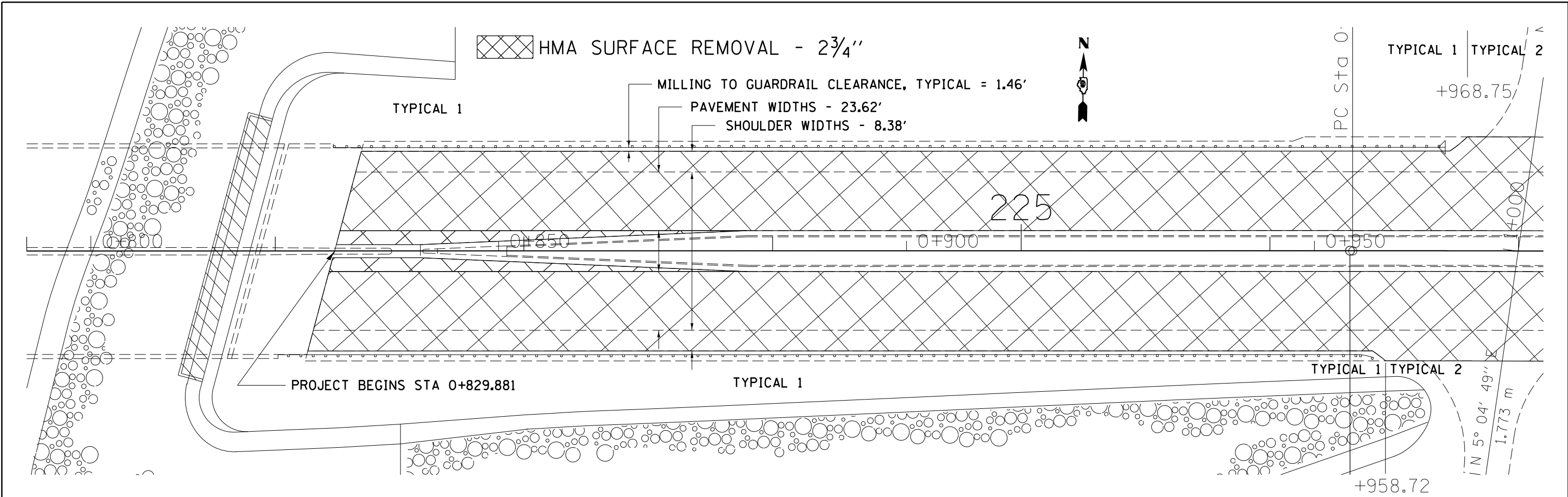
USER NAME = leftwichd	DESIGNED -	REVISED -	
	DRAWN -	REVISED -	
PLOT SCALE = 40,0000 ' / in.	CHECKED -	REVISED -	
PLOT DATE = 1/31/2020	DATE -	REVISED -	

**STATE OF ILLINOIS  
DEPARTMENT OF TRANSPORTATION**

SCALE:      SHEET      OF      SHEETS      STA.      TO      STA.

F.A.P. RTE.	SECTION	COUNTY	TOTAL SHEETS	SHEET NO.
312	(101-1,101)RS-8	ALEXANDER	26	14
CONTRACT NO. 78765				
ILLINOIS   FED. AID PROJECT				





MODEL: Default  
 FILE: \\blm\c:\pub\baroncom\dat\illinois\p\p\DOT\Documents\DOT - Offices\District 9\Projects\78765\CADD\Drawings\90\_78765-Sheets.dgn

USER NAME = leftwichd	DESIGNED -	REVISED -
DRAWN -	REVISOR -	
PLOT SCALE = 40.0000 "/td> <td>CHECKED -</td> <td>REVISED -</td>	CHECKED -	REVISED -
PLOT DATE = 1/31/2020	DATE -	REVISED -

**STATE OF ILLINOIS**  
**DEPARTMENT OF TRANSPORTATION**

PLAN SHEETS - HMA SURFACE REMOVAL				
SHEET 1 OF 5				
SCALE:	SHEET	OF	SHEETS	STA. TO STA.

F.A.P. RTE. 312	SECTION (101-1,101)RS-8	COUNTY ALEXANDER	TOTAL SHEETS 26	SHEET NO. 16
CONTRACT NO. 78765				
ILLINOIS FED. AID PROJECT				




 HMA SURFACE REMOVAL - 2 3/4"

TYPICAL 3



SHOULDER WIDTHS - 9.84'

PAVEMENT WIDTHS - 23.62'

MEDIAN/CENTER LANE WIDTH - 16.40'

PT Sta 1+1

PT Sta C

235

1+200

1+250

1+300

N 89° 04' 04" E

198.320 m

POT Sta 1



TYPICAL 3

240

1+350

1+400

1+450

1+500

245

MODEL: Default  
 FILE: hma101-101-rs-8.dwg  
 C:\Users\baronm\OneDrive\Documents\DOT Office\101-101-RS-8\101-101-RS-8.dwg  
 9/13/2020 10:00:00 AM

USER NAME = leftwichd	DESIGNED -	REVISED -
DRAWN -	REVISOR -	
PLOT SCALE = 40.0000 ' / in.	CHECKED -	REVISED -
PLOT DATE = 1/31/2020	DATE -	REVISED -

**STATE OF ILLINOIS**  
**DEPARTMENT OF TRANSPORTATION**

**PLAN SHEETS - HMA SURFACE REMOVAL**  
**SHEET 2 OF 5**

SCALE: SHEET OF SHEETS STA. TO STA.

F.A.P. RTE.	SECTION	COUNTY	TOTAL SHEETS	SHEET NO.
312	(101-1,101)RS-8	ALEXANDER	26	17
CONTRACT NO. 78765				
ILLINOIS FED. AID PROJECT				




 HMA SURFACE REMOVAL - 2<sup>3</sup>/<sub>4</sub>"

VIRGINIA

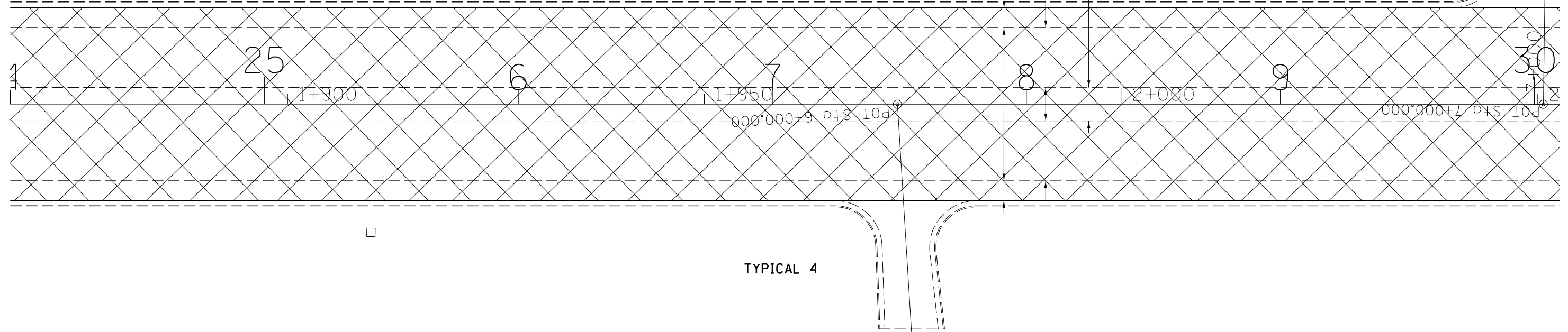
TYPICAL 4



SHOULDER WIDTHS - 7.87'

PAVEMENT WIDTHS - 23.62'

MEDIAN/CENTER LANE WIDTH - 13.12'



TYPICAL 4

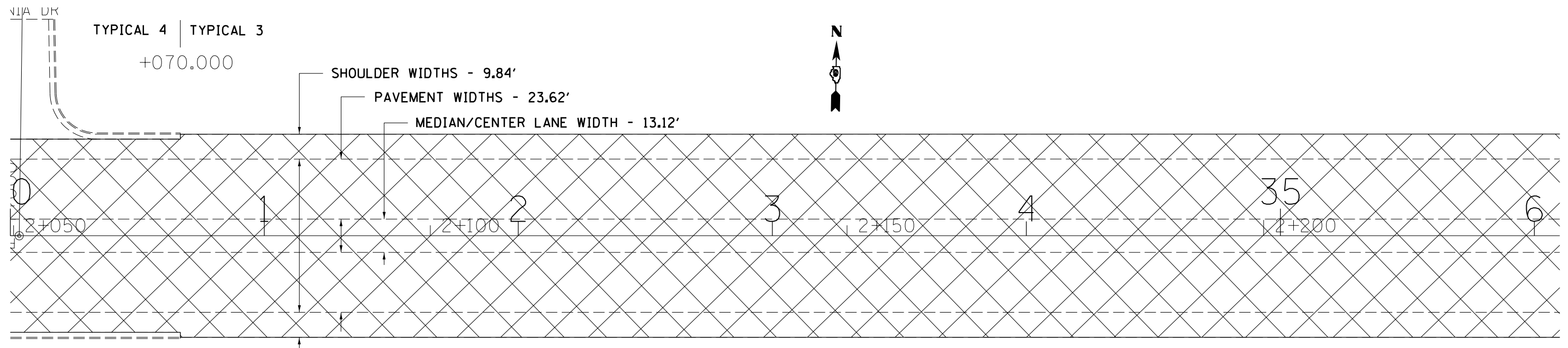
TYPICAL 4 | TYPICAL 3

+070.000

SHOULDER WIDTHS - 9.84'

PAVEMENT WIDTHS - 23.62'

MEDIAN/CENTER LANE WIDTH - 13.12'



+070.000

TYPICAL 4 | TYPICAL 3

MODEL: Default  
 FILE: hma101101rs-8.dwg  
 PROJECT: 78765-CADData-CAD-headers-D9\_78765-Sheets.dgn

USER NAME = leftwichtd	DESIGNED -	REVISED -
PLOT SCALE = 40.0000 ' / in.	DRAWN -	REVISED -
PLOT DATE = 1/31/2020	CHECKED -	REVISED -
	DATE -	REVISED -

STATE OF ILLINOIS  
DEPARTMENT OF TRANSPORTATION

PLAN SHEETS - HMA SURFACE REMOVAL  
SHEET 4 OF 5

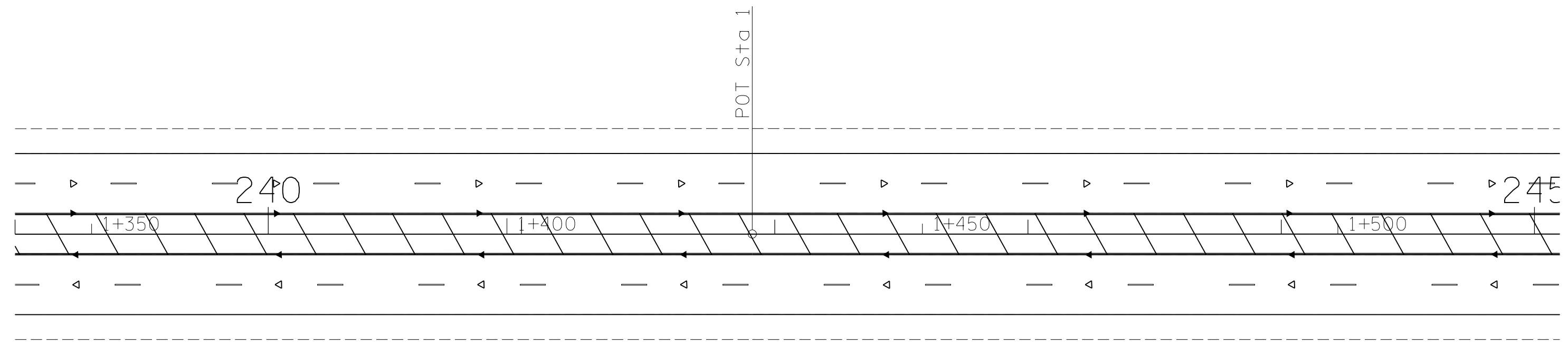
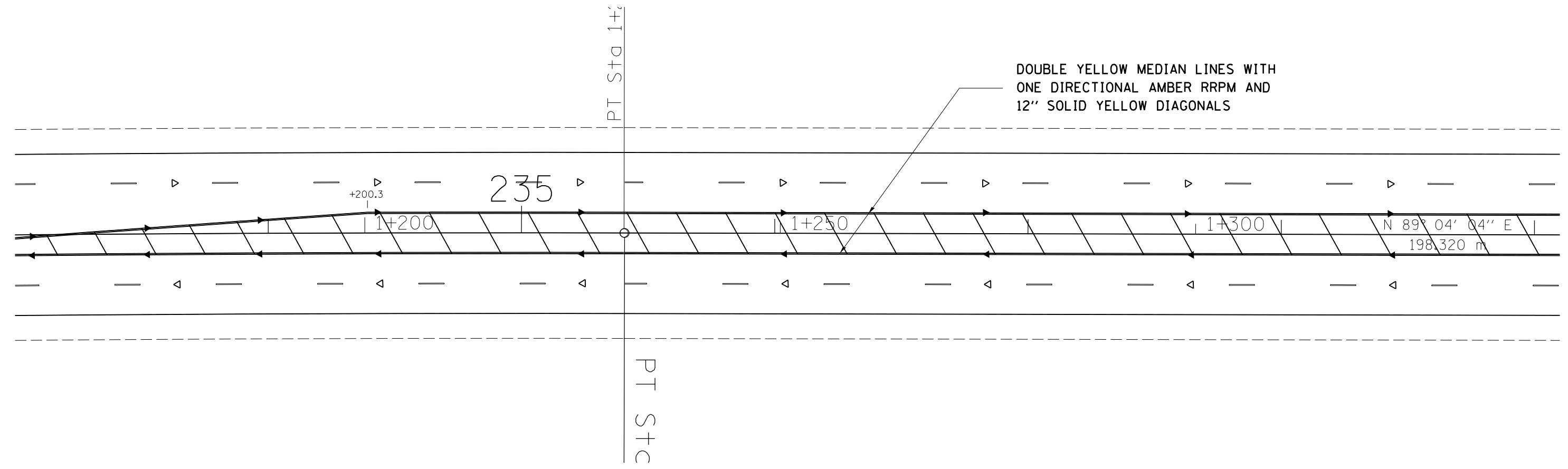
SCALE: SHEET OF SHEETS STA. TO STA.

F.A.P. RTE.	SECTION	COUNTY	TOTAL SHEETS	SHEET NO.
312	(101-1,101)RS-8	ALEXANDER	26	19
CONTRACT NO. 78765				
ILLINOIS FED. AID PROJECT				





DOUBLE YELLOW MEDIAN LINES WITH  
ONE DIRECTIONAL AMBER RRPM AND  
12" SOLID YELLOW DIAGONALS



MODEL: Default  
 FILE: \\blm1c2.pw.usplanning.com\data\illinois.gov\PW\DOT\Documents\DOT\_Offices\District\_9\Projects\78765\CADD\data\CAD\Sheet09\_78765-Sheet.dgn

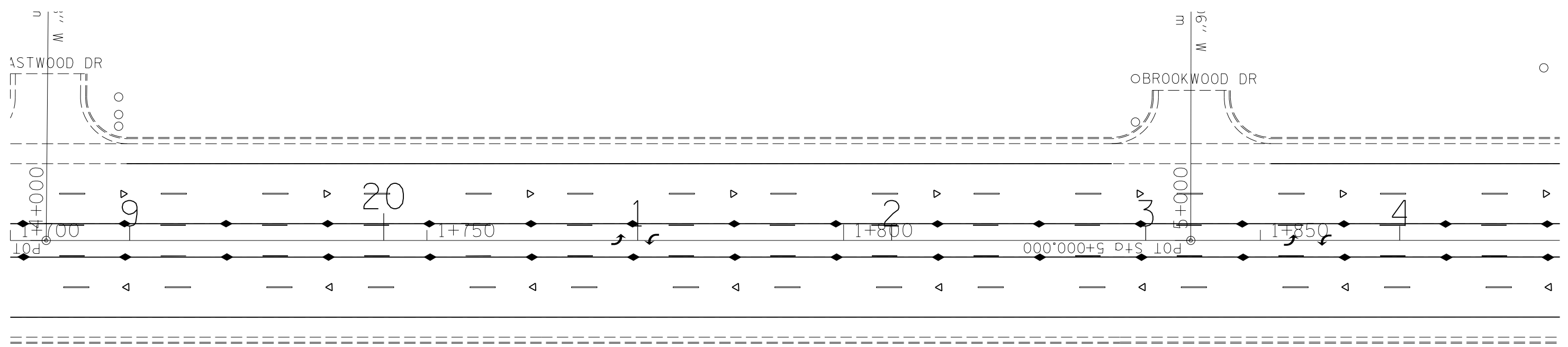
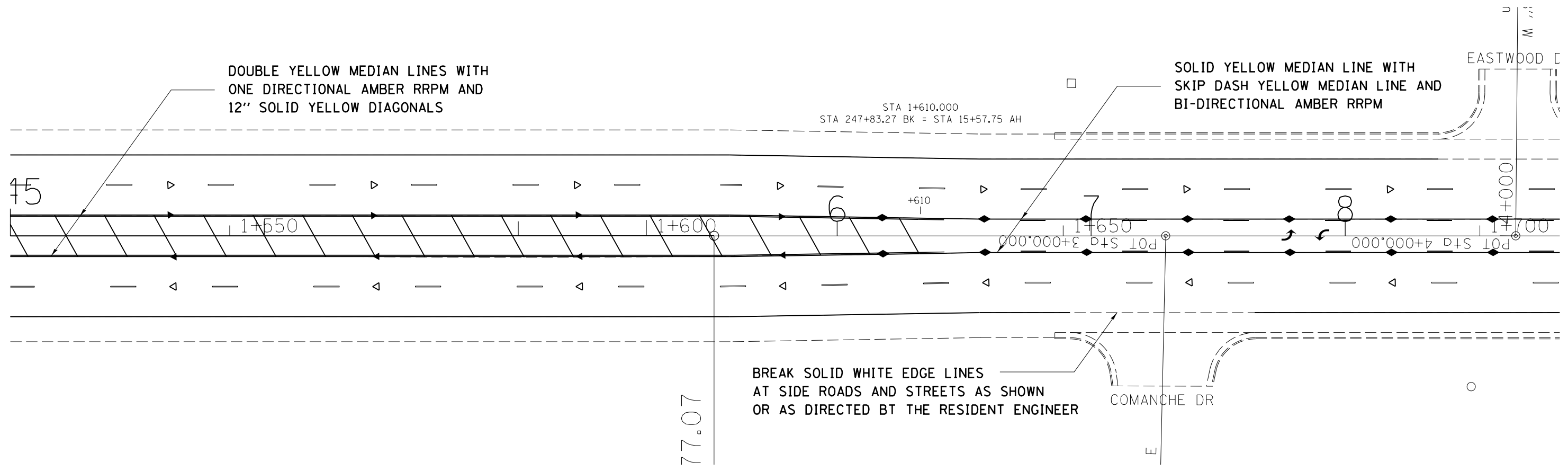
USER NAME = leftwichd	DESIGNED -	REVISED -
DRAWN -	REVISED -	
PLOT SCALE = 40.0000 ' / in.	CHECKED -	REVISED -
PLOT DATE = 1/31/2020	DATE -	REVISED -

**STATE OF ILLINOIS**  
**DEPARTMENT OF TRANSPORTATION**

**PLAN SHEETS - PAVEMENT MARKING**  
**SHEET 2 OF 5**

SCALE: SHEET OF SHEETS STA. TO STA.

F.A.P. RTE.	SECTION	COUNTY	TOTAL SHEETS	SHEET NO.
312	(101-1,101)RS-8	ALEXANDER	26	22
CONTRACT NO. 78765				
ILLINOIS FED. AID PROJECT				



MODEL: Default  
 FILE: \\blm1c2.pw.usplbarn.com\data\illinois.gov\PWIDOT\Documents\DOT\_Offices\District 9\Projects\78765\CADD\data\CAD\Sheets\09\_78765-Sheets.dgn

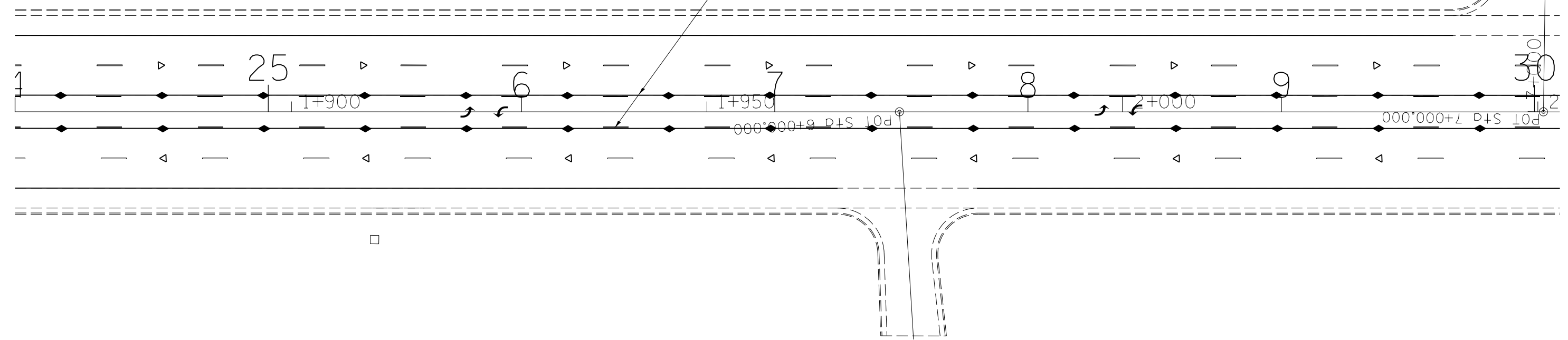
USER NAME = leftwichtd	DESIGNED -	REVISED -
DRAWN -	REVISED -	
PLOT SCALE = 40.0000 ' / in.	CHECKED -	REVISED -
PLOT DATE = 1/31/2020	DATE -	REVISED -

**STATE OF ILLINOIS**  
**DEPARTMENT OF TRANSPORTATION**

<b>PLAN SHEETS - PAVEMENT MARKING</b>			
<b>SHEET 3 OF 5</b>			
SCALE:	SHEET	OF SHEETS	STA. TO STA.

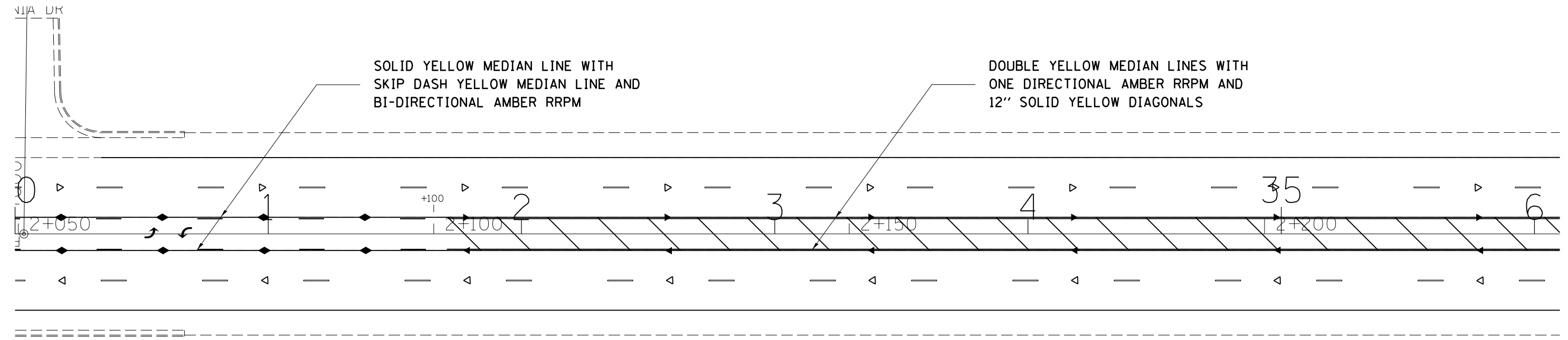
F.A.P. RTE.	SECTION	COUNTY	TOTAL SHEETS	SHEET NO.
312	(101-1,101)RS-8	ALEXANDER	26	23
			CONTRACT NO. 78765	
		ILLINOIS	FED. AID PROJECT	

SOLID YELLOW MEDIAN LINE WITH  
SKIP DASH YELLOW MEDIAN LINE AND  
BI-DIRECTIONAL AMBER RRPM



SOLID YELLOW MEDIAN LINE WITH  
SKIP DASH YELLOW MEDIAN LINE AND  
BI-DIRECTIONAL AMBER RRPM

DOUBLE YELLOW MEDIAN LINES WITH  
ONE DIRECTIONAL AMBER RRPM AND  
12" SOLID YELLOW DIAGONALS



MODEL: Default  
 FILE: \\blm1c2.pw.uspbarn.com\data\illinois.gov\PWIDOT\Documents\DOT\_Offices\District\_9\Projects\78765\CADD\data\CAD\shhets\09\_78765-Sheets.dgn

USER NAME = leftwichtd	DESIGNED -	REVISED -
PLOT SCALE = 40.0000 ' / in.	DRAWN -	REVISED -
PLOT DATE = 1/31/2020	CHECKED -	REVISED -
	DATE -	REVISED -

**STATE OF ILLINOIS  
DEPARTMENT OF TRANSPORTATION**

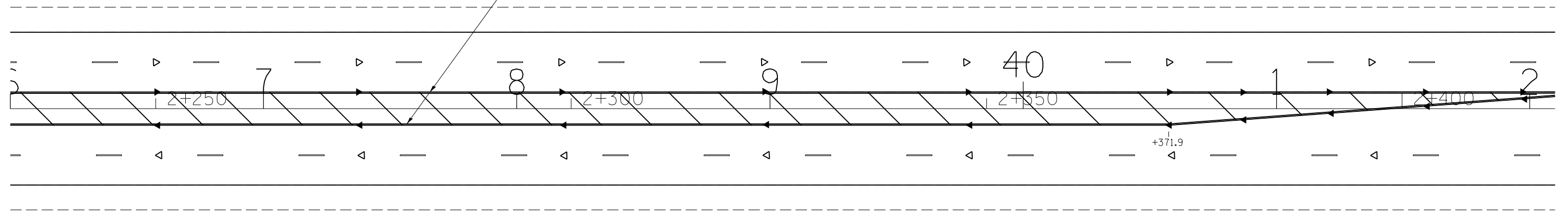
**PLAN SHEETS - PAVEMENT MARKING  
SHEET 4 OF 5**

SCALE: SHEET OF SHEETS STA. TO STA.

F.A.P. RTE.	SECTION	COUNTY	TOTAL SHEETS	SHEET NO.
312	(101-1,101)RS-8	ALEXANDER	26	24
CONTRACT NO. 78765				
ILLINOIS FED. AID PROJECT				



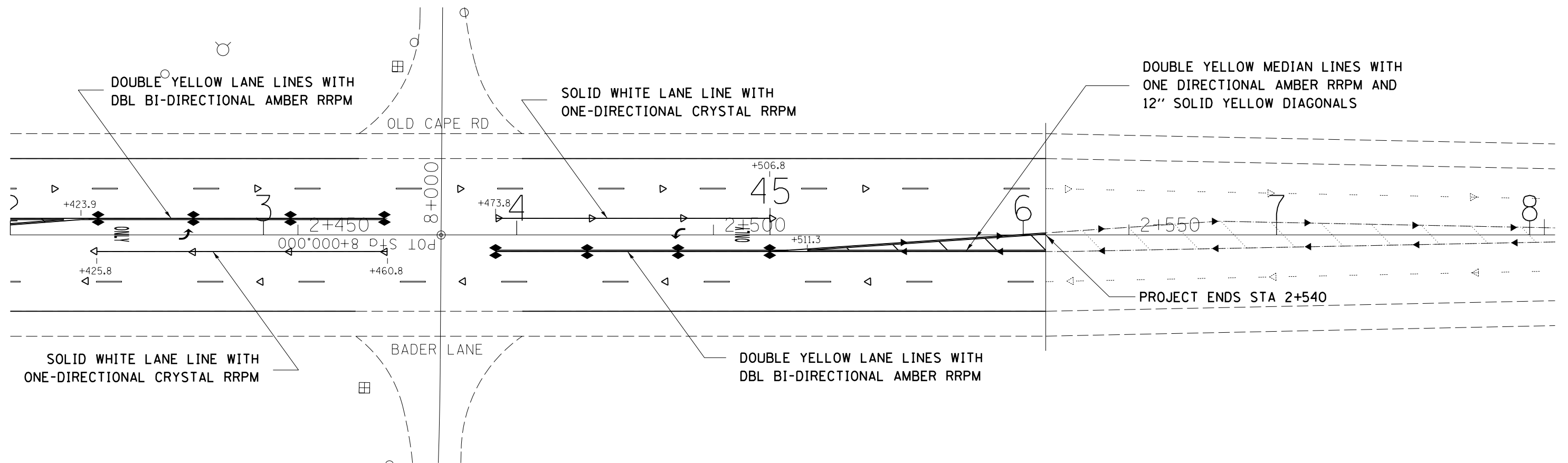
DOUBLE YELLOW MEDIAN LINES WITH  
ONE DIRECTIONAL AMBER RRPM AND  
12" SOLID YELLOW DIAGONALS



DOUBLE YELLOW LANE LINES WITH  
DBL BI-DIRECTIONAL AMBER RRPM

SOLID WHITE LANE LINE WITH  
ONE-DIRECTIONAL CRYSTAL RRPM

DOUBLE YELLOW MEDIAN LINES WITH  
ONE DIRECTIONAL AMBER RRPM AND  
12" SOLID YELLOW DIAGONALS



PROJECT ENDS STA 2+540

SOLID WHITE LANE LINE WITH  
ONE-DIRECTIONAL CRYSTAL RRPM

DOUBLE YELLOW LANE LINES WITH  
DBL BI-DIRECTIONAL AMBER RRPM

STATE OF ILLINOIS  
DEPARTMENT OF TRANSPORTATION

PLAN SHEETS - PAVEMENT MARKING  
SHEET 5 OF 5

F.A.P. RTE.	SECTION	COUNTY	TOTAL SHEETS	SHEET NO.
312	(101-1,101)RS-8	ALEXANDER	26	25
CONTRACT NO. 78765				
ILLINOIS FED. AID PROJECT				

SCALE: SHEET OF SHEETS STA. TO STA.

MODEL: Default  
FILE: h:\mhc\pav\pavbarroom.dwg  
PROJECT: 78765\CADD\Drawings\DOT - Office\Drawings\9-Projects\78765\CADD\Drawings\DOT - Office\Drawings\9-Projects\78765-Sheets.dgn

USER NAME = leftwichd	DESIGNED -	REVISED -
PLOT SCALE = 40.0000 ' / in.	DRAWN -	REVISED -
PLOT DATE = 1/31/2020	CHECKED -	REVISED -
	DATE -	REVISED -

