

105

INDEX OF SHEETS

1	COVER SHEET
2	GENERAL NOTES & COMMITMENTS
3-10	SUMMARY OF QUANTITIES
11-16	TYPICAL SECTIONS
17-22	SCHEDULES
23-37	PLAN SHEETS
38-120	ADA RAMP / SIDEWALK DETAILS
121-136	DETECTOR LOOP DETAILS
137-141	MISCELLANEOUS DETAILS

STATE OF ILLINOIS
DEPARTMENT OF TRANSPORTATION

F A P	SECTION	COUNTY	TOTAL SHEETS	SHEET NO.
330	(15,15X)RS-1	KANKAKEE	* 141	1
			ILLINOIS	CONTRACT NO. 66J63

* 141 + 1 = 142 TOTAL SHEETS (137A)
D-93-020-19

**PROPOSED
HIGHWAY PLANS**

FAP ROUTE 330 (US 45/52)
SECTION (15,15X)RS-1
PROJECT NHPP-GGGF(118)
3P MILL & RESURFACING,
ADA IMPROVEMENTS
KANKAKEE COUNTY

LIST OF ILLINOIS DOT HIGHWAY STANDARDS

000001-07	STANDARD SYMBOLS, ABBREVIATIONS AND PATTERNS
001001-02	AREAS OF REINFORCEMENT BARS
001006	DECIMAL OF AN INCH AND OF A FOOT
424001-11	PERPENDICULAR CURB RAMPS FOR SIDEWALKS
424006-04	DIAGONAL CURB RAMPS FOR SIDEWALKS
424011-04	CORNER PARALLEL CURB RAMPS FOR SIDEWALKS
424016-05	MID-BLOCK CURB RAMPS FOR SIDEWALKS
424021-05	DEPRESSED CORNER FOR SIDEWALKS
424026-03	ENTRANCE / ALLEY PEDESTRIAN CROSSINGS
424031-02	MEDIAN PEDESTRIAN CROSSINGS
442101-09	CLASS B PATCHES
604006-05	FRAME AND GRATE, TYPE 3
606001-07	CONCRETE CURB TYPE B AND COMBINATION CONCRETE CURB AND GUTTER
606301-04	PC CONCRETE ISLANDS AND MEDIANS
667101-02	PERMANENT SURVEY MARKERS
701106-02	OFF-ROAD OPERATIONS, MULTILANE, MORE THAN 15' (4.5 m) AWAY
701427-05	LANE CLOSURE MULTILANE INTERMITTENT OR MOVING OPERATION, FOR SPEEDS ≤ 40 MPH
701601-09	URBAN LANE CLOSURE, MULTILANE, 1W OR 2W WITH NONTRAVERSABLE MEDIAN
701602-10	URBAN LANE CLOSURE, MULTILANE, 2W WITH BIDIRECTIONAL LEFT TURN LANE
701606-10	URBAN LANE CLOSURE, MULTILANE, 2W WITH MOUNTABLE MEDIAN
701701-10	URBAN LANE CLOSURE, MULTILANE INTERSECTION
701801-06	SIDEWALK, CORNER OR CROSSWALK CLOSURE
701901-08	TRAFFIC CONTROL DEVICES
720001-01	SIGN PANEL MOUNTING DETAILS
728001-01	TELESCOPING STEEL SIGN SUPPORT
731001-01	BASE FOR TELESCOPING STEEL SIGN SUPPORT
780001-05	TYPICAL PAVEMENT MARKINGS
781001-04	TYPICAL APPLICATIONS RAISED REFLECTIVE PAVEMENT MARKERS
782001-01	CURB REFLECTORS
876001-04	PEDESTRIAN PUSH BUTTON POST
886001-01	DETECTOR LOOP INSTALLATIONS
886006-01	TYPICAL LAYOUT FOR DETECTION LOOPS



FUNCTION CLASSIFICATION:
2019 ADT: 26,600
PV = 93.6% SU = 4.7% MU = 1.7%

STATE OF ILLINOIS
DEPARTMENT OF TRANSPORTATION

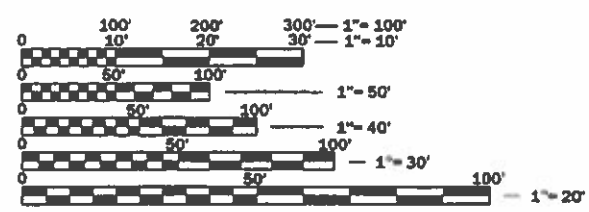
SUBMITTED Feb 06, 2020

[Signature] REGIONAL ENGINEER

March 20, 2020
[Signature] ENGINEER OF DESIGN AND ENVIRONMENT

March 20, 2020
[Signature] DIRECTOR OF HIGHWAYS PROJECT IMPLEMENTATION

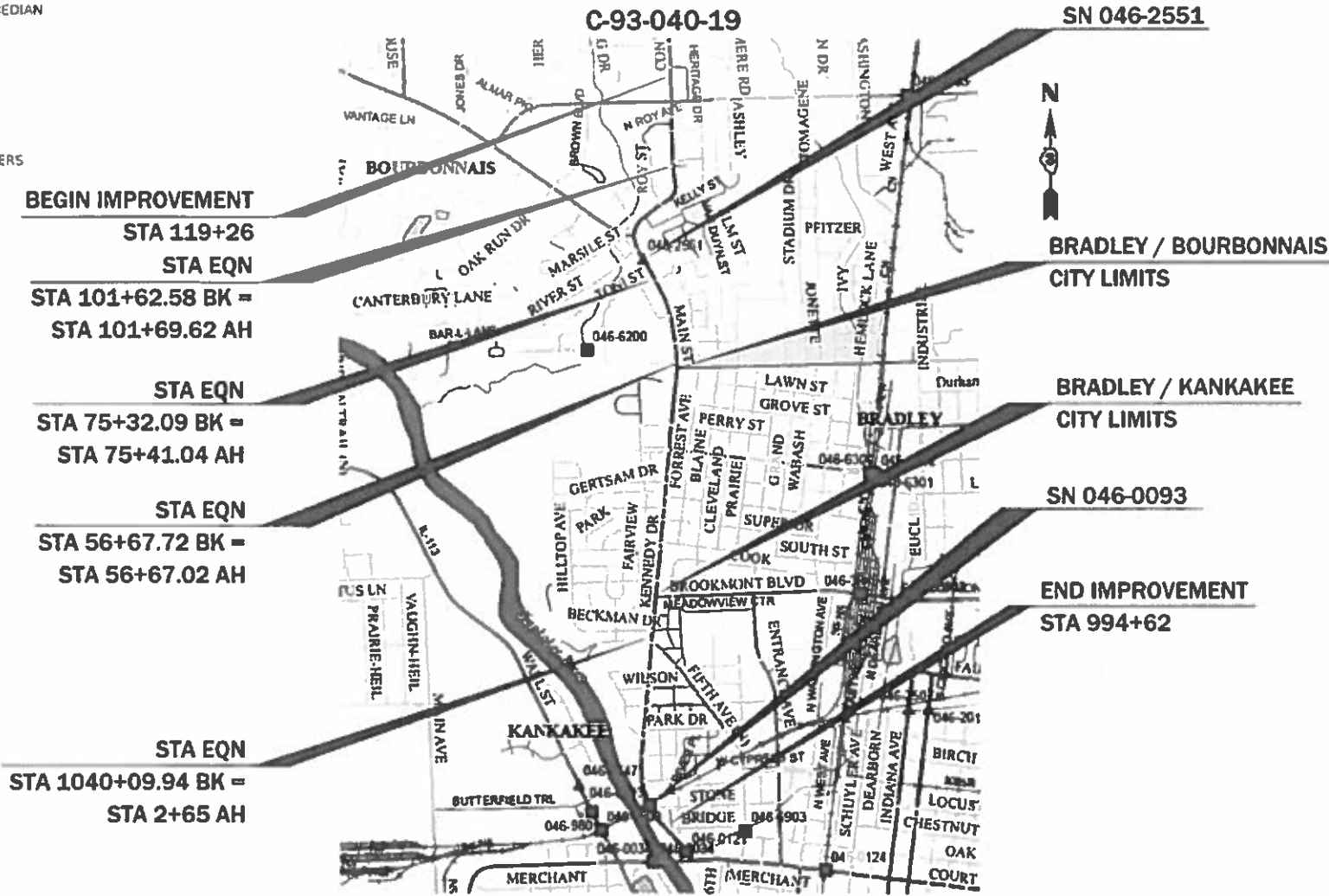
PRINTED BY THE AUTHORITY
OF THE STATE OF ILLINOIS



FULL SIZE PLANS HAVE BEEN PREPARED USING STANDARD ENGINEERING SCALES. REDUCED SIZED PLANS WILL NOT CONFORM TO STANDARD SCALES. IN MAKING MEASUREMENTS ON REDUCED PLANS, THE ABOVE SCALES MAY BE USED.

J.U.L.I.E.
JOINT UTILITY LOCATION INFORMATION FOR EXCAVATION
1-800-892-0123
OR 811

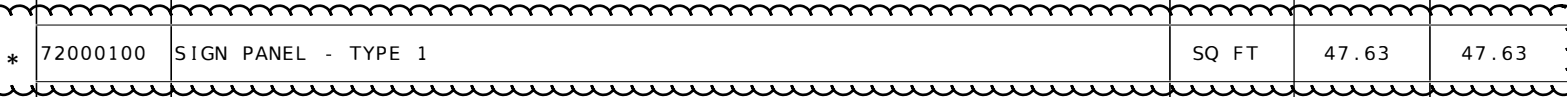
PROJECT ENGINEER - JOE KANNEL, P.E.
UNIT CHIEF - MICHELE LINDEMANN, P.E.
DISTRICT 3 NO. (815) 434-6131
CONTRACT NO. 66J63



GROSS & NET LENGTH = 16204.43 FT. = 3.069 MILE

CONSTRUCTION CODE

CODE NO.	ITEM	UNIT	TOTAL QUANTITY	CONSTRUCTION CODE					
				ROADWAY	KANKAKEE	BRADLEY	BOURBONNAIS	BOURBONNAIS 100% VILL	
				0005	SAFETY 0021	SAFETY 0021	SAFETY 0021	SAFETY 0021	
				URBAN	URBAN	URBAN	URBAN	URBAN	
70300150	SHORT TERM PAVEMENT MARKING REMOVAL	SQ FT	3402	3402					
70300210	TEMPORARY PAVEMENT MARKING LETTERS AND SYMBOLS	SQ FT	2597	2597					
70300220	TEMPORARY PAVEMENT MARKING - LINE 4"	FOOT	30351	30351					
70300240	TEMPORARY PAVEMENT MARKING - LINE 6"	FOOT	13729	13729					
70300250	TEMPORARY PAVEMENT MARKING - LINE 8"	FOOT	6482	6482					
70300260	TEMPORARY PAVEMENT MARKING - LINE 12"	FOOT	1507	1507					
70300280	TEMPORARY PAVEMENT MARKING - LINE 24"	FOOT	1161	1161					
* 72000100	SIGN PANEL - TYPE 1	SQ FT	47.63	47.63					
* 72400100	REMOVE SIGN PANEL ASSEMBLY - TYPE A	EACH	3	3					
* 72400200	REMOVE SIGN PANEL ASSEMBLY - TYPE B	EACH	4	4					
* 72400310	REMOVE SIGN PANEL - TYPE 1	SQ FT	3	3					
* 72800100	TELESCOPING STEEL SIGN SUPPORT	FOOT	71	71					
* 73100100	BASE FOR TELESCOPING STEEL SIGN SUPPORT	EACH	5	5					
* 78000100	THERMOPLASTIC PAVEMENT MARKING - LETTERS AND SYMBOLS	SQ FT	2597	2597					



*= SPECIALTY ITEM

MODEL: Default
FILE NAME: P:\p1\p1room.dat
PROJECT: 3\Project\36663\CAD\Drawings\DOT Office\District 3\Project\36663\CAD\Drawings\36663-sh-500.dgn

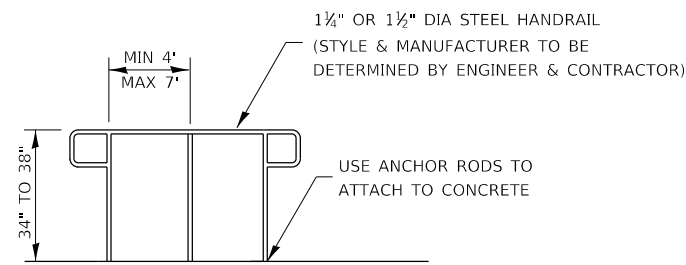
USER NAME = corcoranlm	DESIGNED -	REVISED -
	DRAWN -	REVISED -
PLOT SCALE = 100.0000 ' / in.	CHECKED -	REVISED -
PLOT DATE = 2/6/2020	DATE -	REVISED -

**STATE OF ILLINOIS
DEPARTMENT OF TRANSPORTATION**

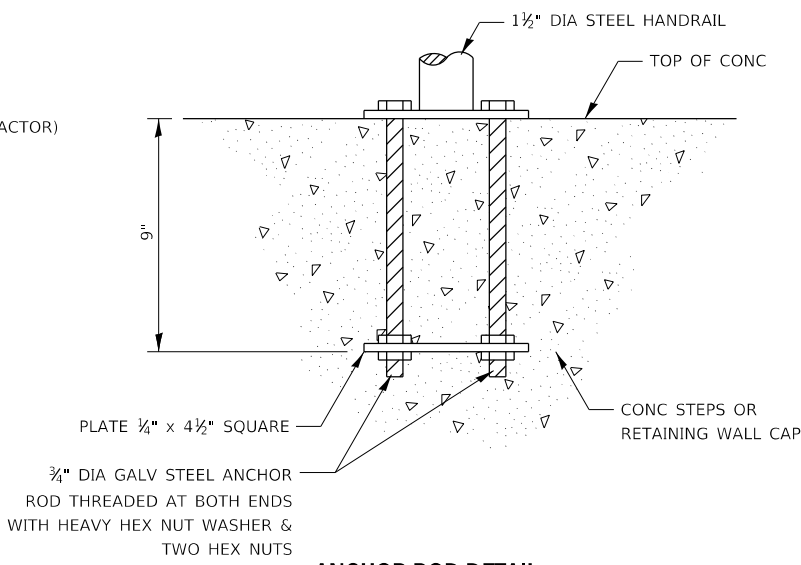
SUMMARY OF QUANTITIES

SCALE: SHEET OF SHEETS STA. TO STA.

F.A.P. RTE.	SECTION	COUNTY	TOTAL SHEETS	SHEET NO.
330	(15.15-X)RS-1	KANKAKEE	141	6
CONTRACT NO. 66J63				
ILLINOIS FED. AID PROJECT				

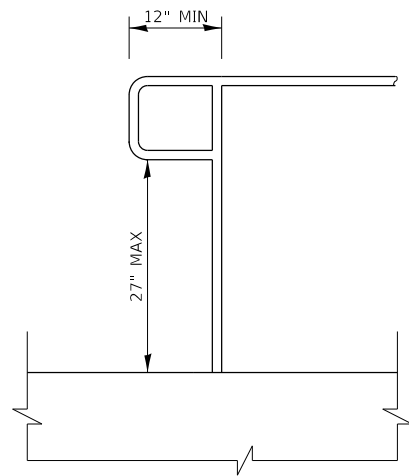


HANDRAIL



ANCHOR ROD DETAIL

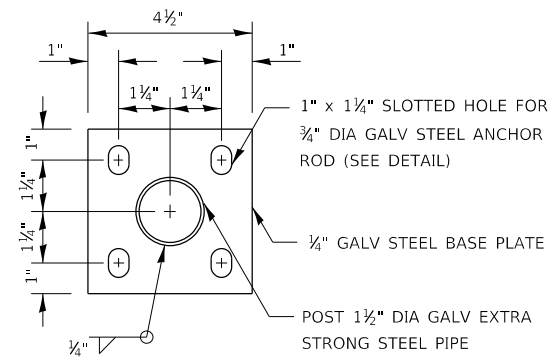
(INCLUDED IN THE COST OF HAND OR SAFETY RAIL)



EXTENSION AT BOTTOM OF RUN DETAIL

NOTES:

- GRIPPING SURFACES SHALL BE UNINTERRUPTED BY NEWEL POSTS, OTHER CONSTRUCTION ELEMENTS, OR OBSTRUCTIONS.
- ENDS OF HANDRAIL SHALL BE EITHER ROUNDED OR RETURNED SMOOTHLY TO FLOOR, WALL, OR POST.
- HAND & SAFETY RAILS SHALL NOT ROTATE WITHIN THEIR FITTINGS.
- THE CLEAR SPACES BETWEEN HANDRAILS AND ANY WALL SHALL BE 1 1/2".
- HANDRAIL SHALL CONFORM TO SECTION 509 WITH THE EXCEPTION THAT ALL PIPE AND CONNECTIONS SHALL BE WELDED GALVANIZED OR ALUMINUM ACCORDING TO ARTICLE 1006.27, 1006.30, OR 1006.34.
- THE DIAMETER OF THE GRIPPING SURFACE OF THE HANDRAIL SHALL BE 1 1/4" TO 1 1/2".
- THIS WORK SHALL BE PAID FOR AT THE CONTRACT UNIT PRICE PER FOOT FOR PEDESTRIAN RAIL.



POST CASE PLATE DETAIL

(INCLUDED IN THE COST OF HAND OR SAFETY RAIL)

PEDESTRIAN RAIL

FILE NAME =	USER NAME = corcoranlm	DESIGNED -	REVISED -	STATE OF ILLINOIS DEPARTMENT OF TRANSPORTATION	DETAILS				F.A.P. RTE.	SECTION	COUNTY	TOTAL SHEETS	SHEET NO.
pw:\planroom\dott\illinois\gov\PWDOT\Documents\IDOT\Office\District 3\Projects\D366J63\CADData\CADsheets\D366J63-01.dwg		DRAWN -	REVISED -		330	(15.15)RS-1	KANKAKEE	141	137A				
PLOT SCALE = 100,0000' / in.		CHECKED -	REVISED -		CONTRACT NO. 66J63								
Default	PLOT DATE = 4/10/2020	DATE -	REVISED -		SCALE:	SHEET	OF	SHEETS	STA.	TO	STA.	ILLINOIS	FED. AID PROJECT