

STATE OF ILLINOIS
DEPARTMENT OF TRANSPORTATION

F.A.P. RIE.	SECTION	COUNTY	TOTAL SHEETS	SHEET NO.
VAR.	D6 PATCHING MACOUPIN	MACOUPIN	21	1
		ILLINOIS	CONTRACT NO. 72L49	

FOR INDEX OF SHEETS, SEE SHEET NO. 2

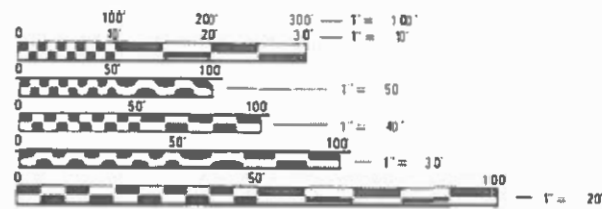
PROPOSED
IMPROVEMENTS

VARIOUS ROUTES
D6 PATCHING MACOUPIN 2019
PATCHING

MACOUPIN CO.
C-96-028-20



SEE SHEET 5 FOR A LOCATION MAP



FULL SIZE PLANS HAVE BEEN PREPARED USING STANDARD ENGINEERING SCALES. REDUCED SIZED PLANS WILL NOT CONFORM TO STANDARD SCALES. IN MAKING MEASUREMENTS ON REDUCED PLANS, THE ABOVE SCALES MAY BE USED.

J.U.L.I.E.
JOINT UTILITY LOCATION INFORMATION FOR EXCAVATION
1-800-892-0123
OR 811

PROJECT ENGINEER : MIKE IRWIN - (217)524-7765
PROJECT MANAGER : TIM SHARP - (217)524-9160

CONTRACT NO. 72L49

STATE OF ILLINOIS
DEPARTMENT OF TRANSPORTATION

SUBMITTED February 21, 2020
Julie P. M...
REGION FOUR ENGINEER

Mauro...
Sec. E.A. Etk
ENGINEER OF DESIGN AND ENVIRONMENT

Mauro...
DIRECTOR OF HIGHWAYS PROJECT IMPLEMENTATION 13



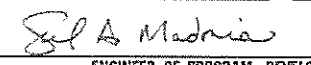
PRINTED BY THE AUTHORITY
OF THE STATE OF ILLINOIS

INDEX OF SHEETS

SHEET NO.	DESCRIPTION
1.	COVER SHEET
2.	INDEX OF SHEETS, STANDARDS, GENERAL NOTES & SIGNATURE
3.	SUMMARY OF QUANTITIES
4.	SCHEDULE OF QUANTITIES
5.	PROJECT LOCATION MAP
6-12.	LOCATION MAPS
13-21.	TYPICAL SECTIONS

STANDARDS

STANDARD NO.	DESCRIPTION
000001-07	STANDARD SYMBOLS, ABBREVIATIONS AND PATTERNS
442201-03	CLASS C & D PATCHES
701201-05	LANE CLOSURE, 2L, 2W, DAY ONLY, FOR SPEEDS > 45 MPH
701501-06	URBAN LANE CLOSURE, 2L, 2W, UNDIVIDED
701502-09	URBAN LANE CLOSURE, 2L, 2W, WITH BIDIRECTIONAL LEFT TURN LANE
701901-08	TRAFFIC CONTROL DEVICES

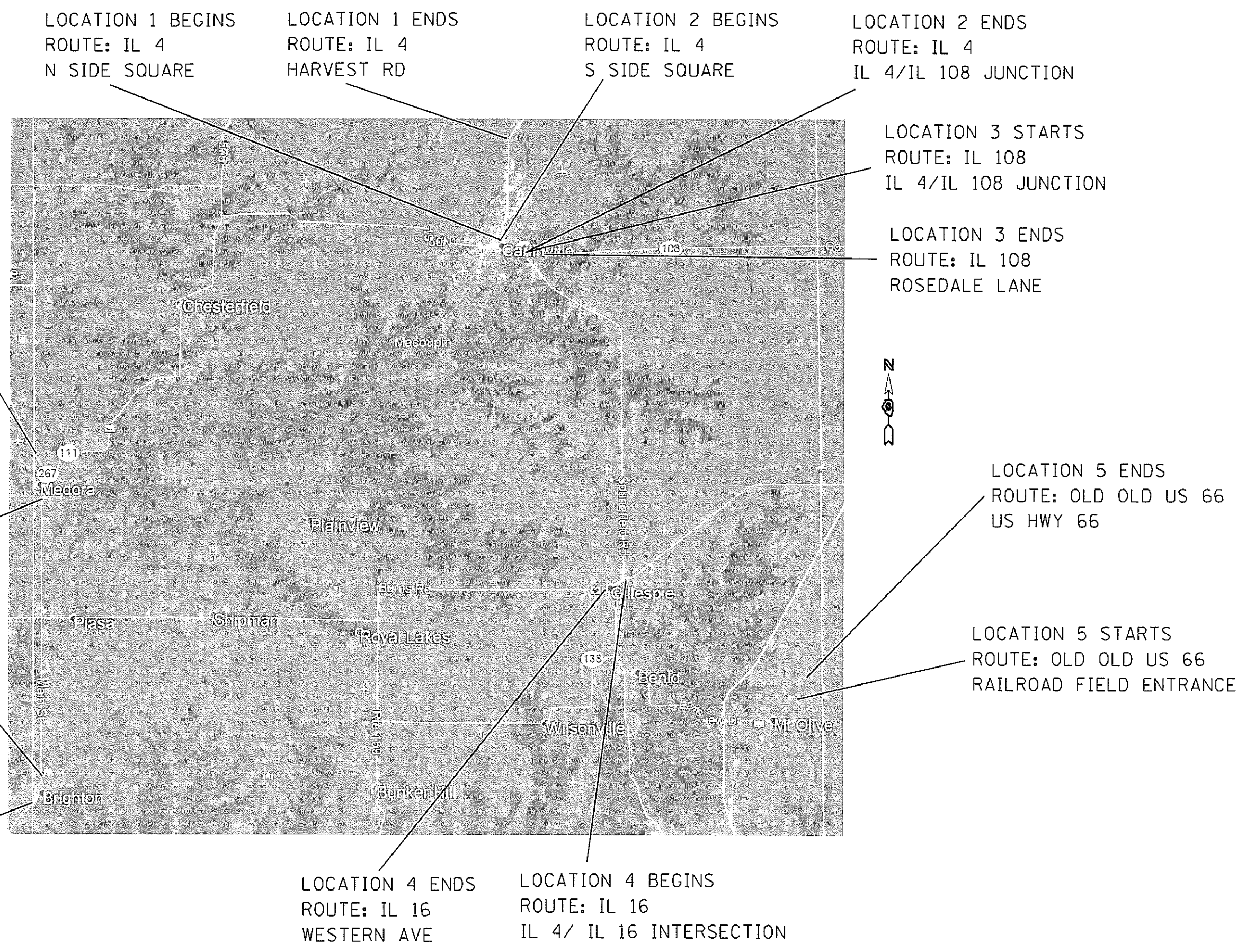
STATE OF ILLINOIS DEPARTMENT OF TRANSPORTATION DIVISION OF HIGHWAYS DISTRICT 6	
EXAMINED _____ 20____	 ENGINEER OF OPERATIONS
EXAMINED _____ 20____	 ENGINEER OF PROJECT IMPLEMENTATION
EXAMINED _____ 20____	 ENGINEER OF PROGRAM DEVELOPMENT

PPS:0-02174-6020

100% STATE

CODE NO.	ITEM	UNIT	TOTAL QUANTITY	ROADWAY
				0006 RURAL
44201403	CLASS C PATCHES, TYPE II, 14 INCH	SQ YD	1222.0	1222.0
44201407	CLASS C PATCHES, TYPE III, 14 INCH	SQ YD	70.0	70.0
44201409	CLASS C PATCHES, TYPE IV, 14 INCH	SQ YD	771.0	771.0
67100100	MOBILIZATION	L SUM	1	1
70100450	TRAFFIC CONTROL AND PROTECTION, STANDARD 701201	L SUM	1	1
70102620	TRAFFIC CONTROL AND PROTECTION, STANDARD 701501	L SUM	1	1
70102622	TRAFFIC CONTROL AND PROTECTION, STANDARD 701502	L SUM	1	1

CLASS C, 14 INCH			
	TY II	TY III	TY IV
LANE			
NB/SB/EB/WB	(S.Y.)	(S.Y.)	(S.Y.)
LOCATION #1, IL 4 in CARLINVILLE from N SIDE SQUARE to HARVEST RD			
NB	200.0	0.0	26.7
SB	216.0	0.0	86.7
TOTAL =	416.0	0.0	113.4
LOCATION #2, IL 4 in CARLINVILLE from S SIDE SQUARE to IL 4/IL 108 JUNCTION			
NB	13.3	0.0	0.0
SB	13.3	22.2	55.6
TOTAL =	26.6	22.2	55.6
LOCATION #3, IL 108 just E of CARLINVILLE from IL 4/IL 108 JUNCTION to ROSEDALE LN			
EB	16.0	0.0	80.0
WB	40.0	0.0	106.7
TOTAL =	56.0	0.0	186.7
LOCATION #4, IL 16 in GILLESPIE from IL 4 to WESTERN AVE			
EB	25.3	0.0	48.0
WB	24.0	41.1	0.0
TOTAL =	49.3	41.1	48.0
LOCATION#5, OLD OLD 66 in Mt. OLIVE N PARK ENTRANCE to US HWY 66			
NB	138.0	0.0	90.0
SB	150.0	0.0	90.0
TOTAL =	288.0	0.0	180.0
LOCATION#6, IL 111/267 in MEDORA from S MAIN ST to JERSEY COUNTY LINE			
NB	80.0	0.0	0.0
SB	80.0	0.0	0.0
TOTAL =	160.0	0.0	0.0
LOCATION #7, IL 111/267 in BRIGHTON from ASHTON DR to MADISON COUNTY LINE			
NB	61.3	0.0	58.6
SB	53.3	0.0	58.6
TOTAL =	114.6	0.0	117.2
MISCELLANEOUS PATCHING QUANTITIES			
TOTAL =	111.1	6.3	70.1



LOCATION 1 BEGINS
ROUTE: IL 4
N SIDE SQUARE

LOCATION 1 ENDS
ROUTE: IL 4
HARVEST RD

LOCATION 2 BEGINS
ROUTE: IL 4
S SIDE SQUARE

LOCATION 2 ENDS
ROUTE: IL 4
IL 4/IL 108 JUNCTION

LOCATION 3 STARTS
ROUTE: IL 108
IL 4/IL 108 JUNCTION

LOCATION 3 ENDS
ROUTE: IL 108
ROSEDALE LANE

LOCATION 5 ENDS
ROUTE: OLD OLD US 66
US HWY 66

LOCATION 5 STARTS
ROUTE: OLD OLD US 66
RAILROAD FIELD ENTRANCE

LOCATION 6 ENDS
ROUTE: IL 111/267
MADISON CO LINE

LOCATION 6 STARTS
ROUTE: IL 111/267
S MAIN ST

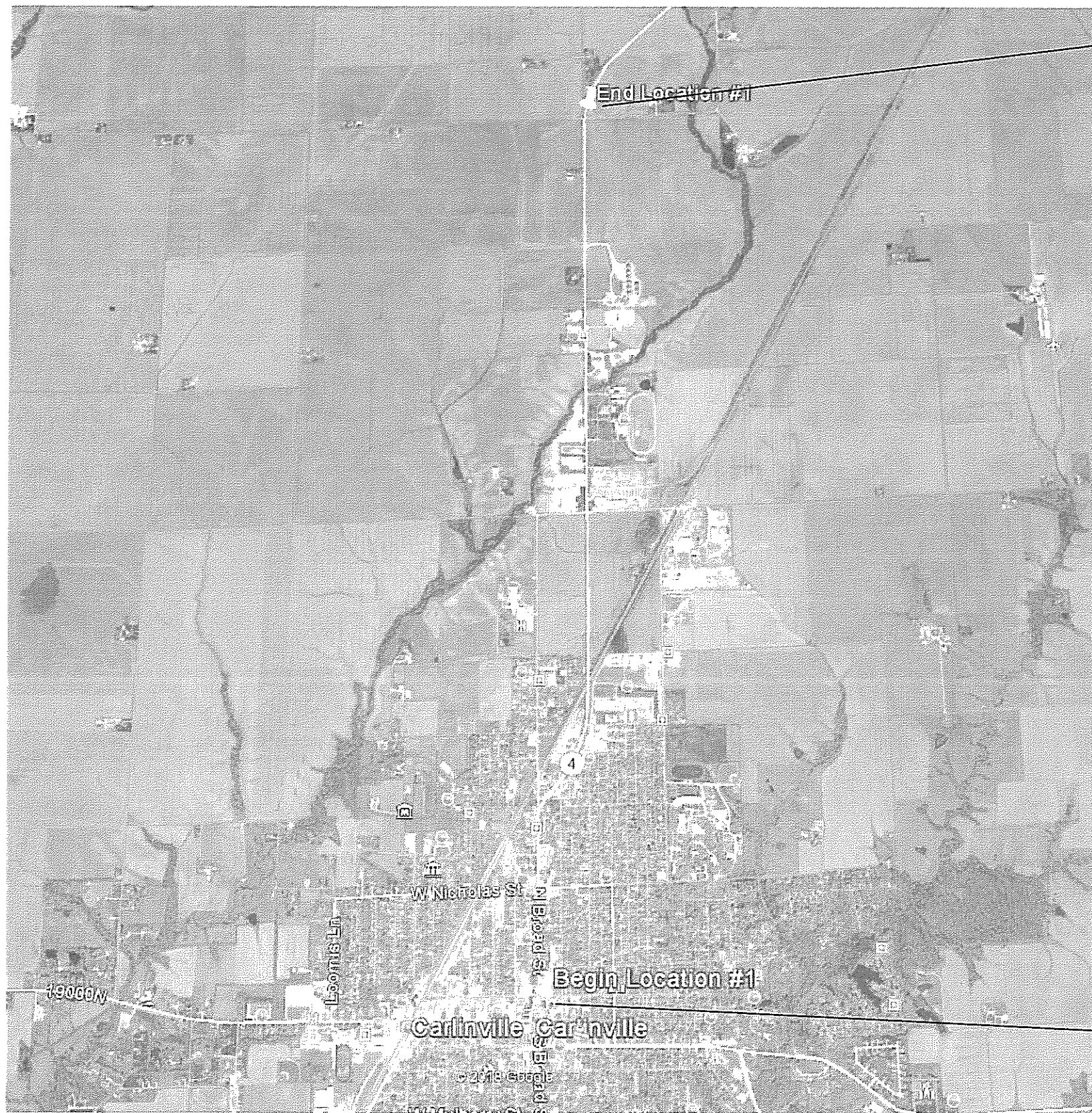
LOCATION 7 STARTS
ROUTE: IL 111/267
ASHTON DR

LOCATION 7 ENDS
ROUTE: IL 111/267
JERSEY CO LINE

LOCATION 4 ENDS
ROUTE: IL 16
WESTERN AVE

LOCATION 4 BEGINS
ROUTE: IL 16
IL 4/ IL 16 INTERSECTION

FILE NAME =	USER NAME = sharptd	DESIGNED -	REVISED -	STATE OF ILLINOIS DEPARTMENT OF TRANSPORTATION	PROJECT LOCATION MAP	F.A.P. RTE.	SECTION	COUNTY	TOTAL SHEETS	SHEET NO.	
S:\CONTRACTS\72L49\plans\72L49-sh	S-12-plans.dgn	DRAWN -	REVISED -			VAR	D6 PATCHING MACOUPIN	MACOUPIN	21	5	
	PLOT SCALE = 40,0000' / in.	CHECKED -	REVISED -			CONTRACT NO. 72L49					
Default	PLOT DATE = 2/21/2020	DATE -	REVISED -			ILLINOIS FED. AID PROJECT					



LOCATION 1 ENDS
ROUTE: IL 4
HARVEST RD

LOCATION 1 BEGINS
ROUTE: IL 4
N SIDE SQUARE

FILE NAME =	USER NAME = sherptd	DESIGNED - _____	REVISED - _____
S:\CONTRM\MAINT.CAD\72L49\plans\72L49-sh	S-12-plans.dgn	DRAWN - _____	REVISED - _____
	PLOT SCALE = 40.0000' / in.	CHECKED - _____	REVISED - _____
Default	PLOT DATE = 2/21/2020	DATE - _____	REVISED - _____

STATE OF ILLINOIS
DEPARTMENT OF TRANSPORTATION

LOCATION MAP

SCALE: _____ SHEET 1 OF 7 SHEETS STA. _____ TO STA. _____

F.A.P. RTE.	SECTION	COUNTY	TOTAL SHEETS	SHEET NO.
VAR	06 PATCHING MACOUPIN	MACOUPIN	21	6
ILLINOIS FED. AID PROJECT			CONTRACT NO. 72L49	



LOCATION 2 BEGINS
ROUTE: IL 4
S SIDE SQUARE

LOCATION 2 ENDS
ROUTE: IL 4
IL 4/IL 108 JUNCTION

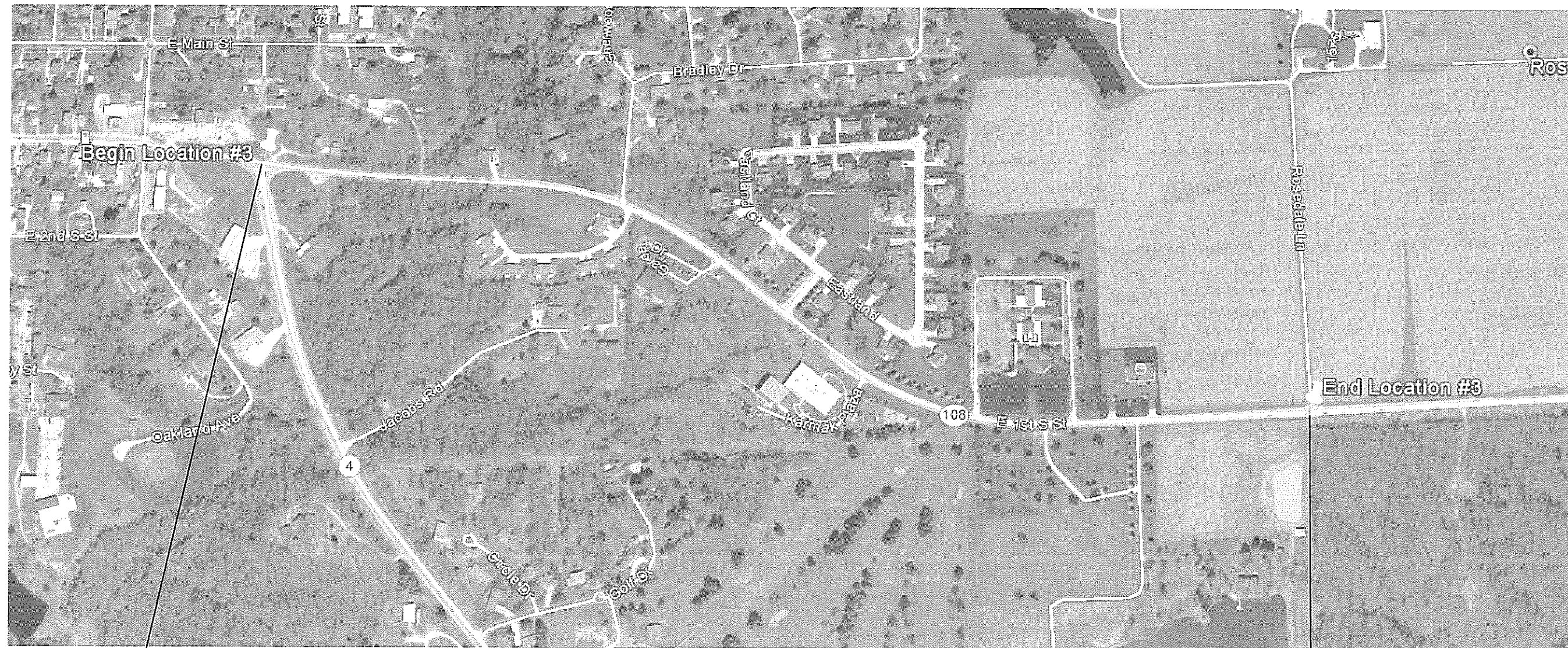
FILE NAME =	USER NAME = shorptd	DESIGNED - _____	REVISED - _____
S:\CONTRMAINT_CAD\72L49\plans\72L49-sh	5-12-plans.dgn	DRAWN - _____	REVISED - _____
	PLOT SCALE = 40.0000 / in.	CHECKED - _____	REVISED - _____
Default	PLOT DATE = 2/21/2020	DATE - _____	REVISED - _____

STATE OF ILLINOIS
DEPARTMENT OF TRANSPORTATION

LOCATION MAP

SCALE: _____ SHEET 2 OF 7 SHEETS STA. _____ TO STA. _____

F.A.P. RTE.	SECTION	COUNTY	TOTAL SHEETS	SHEET NO.
VAR	06 PATCHING MACOUPN	MACOUPIN	21	7
CONTRACT NO. 72L49			ILLINOIS FED. AID PROJECT	



LOCATION 3 STARTS
ROUTE: IL 108
IL 4/IL 108 JUNCTION

LOCATION 3 ENDS
ROUTE: IL 108
ROSEDALE LANE

FILE NAME =	USER NAME = shorptd	DESIGNED - _____	REVISED - _____
S:\CONTRM\MAINT.CAD\72L49\plans\72L49-sh-5-12-plans.dgn		DRAWN - _____	REVISED - _____
	PLOT SCALE = 40.0000' / in.	CHECKED - _____	REVISED - _____
Default	PLOT DATE = 2/21/2020	DATE - _____	REVISED - _____

STATE OF ILLINOIS
DEPARTMENT OF TRANSPORTATION

LOCATION MAP

SCALE: _____ SHEET 3 OF 7 SHEETS STA. _____ TO STA. _____

F.A.P. RTE.	SECTION	COUNTY	TOTAL SHEETS	SHEET NO.
VAR	06 PATCHING MACOUPIN	MACOUPIN	21	8
CONTRACT NO. 72L49				
ILLINOIS FED. AID PROJECT				



LOCATION 4 ENDS
ROUTE: IL 16
WESTERN AVE

LOCATION 4 BEGINS
ROUTE: IL 16
IL 4/ IL 16 INTERSECTION

FILE NAME =	USER NAME = sherptd	DESIGNED -	REVISED -	STATE OF ILLINOIS DEPARTMENT OF TRANSPORTATION	LOCATION MAP		F.A.P. RTE.	SECTION	COUNTY	TOTAL SHEETS	SHEET NO.
S:\CONTRMINT.CAD\72L49\plans\72L49-sh	5-12-plans.dgn	DRAWN -	REVISED -				VAR	06 PATCHING MACOUPIN	MACOUPIN	21	9
Default	PLOT SCALE = 40.0000' / in.	CHECKED -	REVISED -		SCALE: _____ SHEET 4 OF 7 SHEETS STA. _____ TO STA. _____			CONTRACT NO. 72L49			
	PLOT DATE = 2/21/2020	DATE -	REVISED -		ILLINOIS FED. AID PROJECT						



LOCATION 5 ENDS
 ROUTE: OLD OLD US 66
 US HWY 66

LOCATION 5 STARTS
 ROUTE: OLD OLD US 66
 RAILROAD FIELD ENTRANCE

FILE NAME =	USER NAME = sharptd	DESIGNED -	REVISED -
S:\CONTRMINT.CAD\72L49\plans\72L49-sh	5-12-plans.dgn	DRAWN - 10	REVISED -
Default	PLOT SCALE = 40.0000' / 1"	CHECKED -	REVISED -
	PLOT DATE = 2/21/2020	DATE -	REVISED -

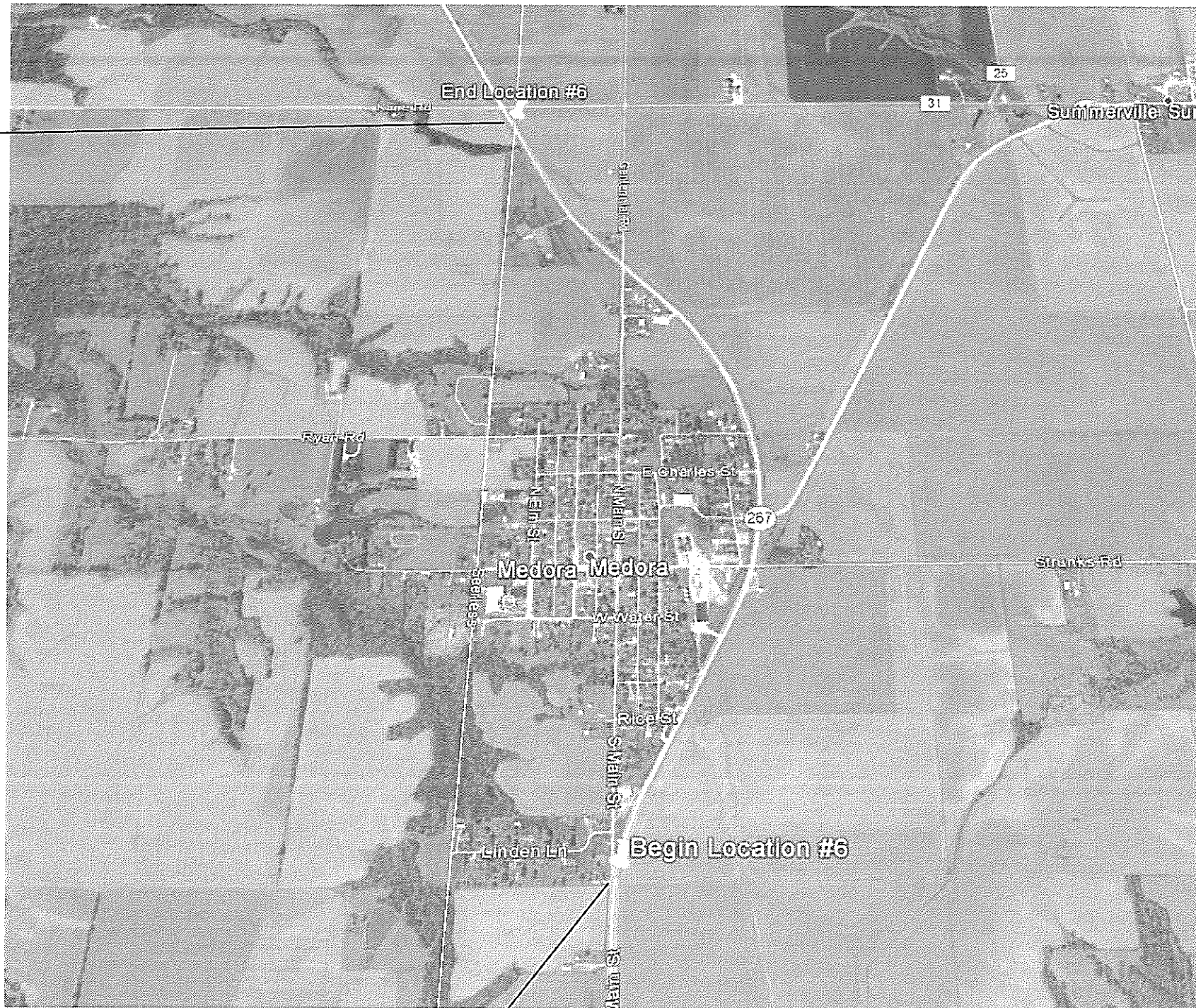
STATE OF ILLINOIS
 DEPARTMENT OF TRANSPORTATION

LOCATION MAP

SCALE: SHEET 5 OF 7 SHEETS STA. TO STA.

F.A.P. RTE.	SECTION	COUNTY	TOTAL SHEETS	SHEET NO.
VAR	06 PATCHING MACOUPIN	MACOUPIN	21	10
			CONTRACT NO. 72L49	
ILLINOIS FED. AID PROJECT				

LOCATION 6 ENDS
ROUTE: IL 111/267
MADISON CO LINE



LOCATION 6 STARTS
ROUTE: IL 111/267
S MAIN ST

FILE NAME =	USER NAME = shorptd	DESIGNED - _____	REVISED - _____
S:\CONTRMAINT\CAD\72L49\plans\72L49-sh	S-12-plans.dgn	DRAWN - _____	REVISED - _____
	PLOT SCALE = 40.0000' / in.	CHECKED - _____	REVISED - _____
Default	PLOT DATE = 2/21/2020	DATE - _____	REVISED - _____

STATE OF ILLINOIS
DEPARTMENT OF TRANSPORTATION

LOCATION MAP

SCALE: _____ SHEET 6 OF 7 SHEETS STA. _____ TO STA. _____

F.A.P. RTE.	SECTION	COUNTY	TOTAL SHEETS	SHEET NO.
VAR	06 PATCHING MACOUPIN	MACOUPIN	21	11
			CONTRACT NO. 72L49	
ILLINOIS FED. AID PROJECT				

LOCATION 7 STARTS
ROUTE: IL 111/267
ASHTON DR



LOCATION 7 ENDS
ROUTE: IL 111/267
JERSEY CO LINE

FILE NAME *	USER NAME = sharptd	DESIGNED - _____	REVISED - _____
S:\CONTRMAINT\CAD\72L49\plans\72L49-sh	5-12-plans.dgn	DRAWN - _____	REVISED - _____
Default	PLOT SCALE = 40.0000' / in.	CHECKED - _____	REVISED - _____
	PLOT DATE = 2/21/2020	DATE - _____	REVISED - _____

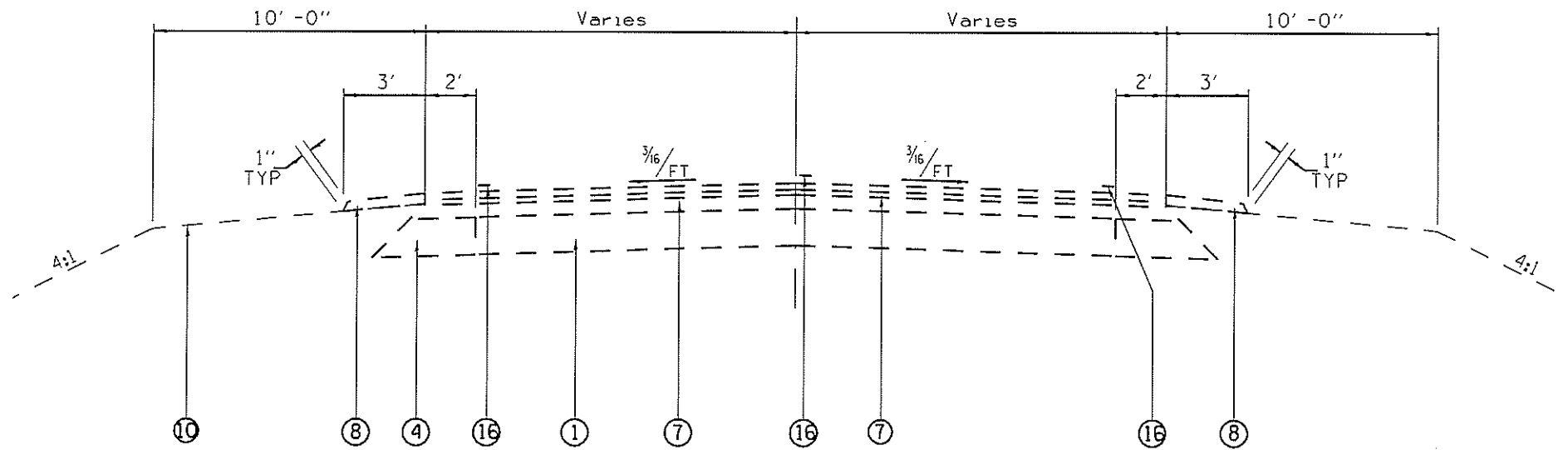
STATE OF ILLINOIS
DEPARTMENT OF TRANSPORTATION

LOCATION MAP

SCALE: _____ SHEET 7 OF 7 SHEETS STA. _____ TO STA. _____

F.A.P. RTE.	SECTION	COUNTY	TOTAL SHEETS	SHEET NO.
VAR	05 PATCHING MACOUPIN	MACOUPIN	21	12
CONTRACT NO. 72L49			ILLINOIS FED. AID PROJECT	

F.A. RT 662 (IL 4)



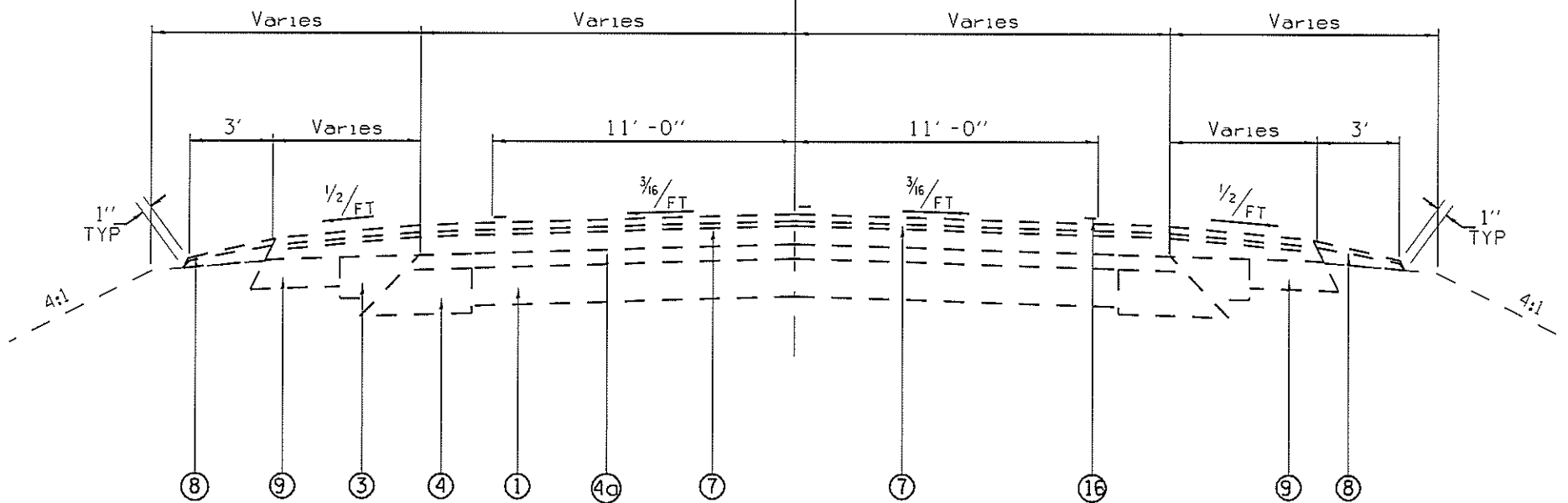
LOCATION #1

STA. 2191+15.89 TO STA. 2194+28.3
 STA. 2194+28.3 TO STA. 2223+29.6
 STA. 2233+88.4 TO STA. 2248+42
 STA. 2233+19.14 TO STA. 2233+88.4

STA. EQUATION

STA. 2248+42 BK = STA. 6+22.2 AH

F.A. RT 662 (IL 4)



LOCATION #1

STA. 2223+29.60 TO STA. 2223+50.00
 STA. 48+10 TO STA. 57+50

BRIDGE OMISSION

STA. 2223+50.00 TO STA. 2233+19.14

STA. EQUATION

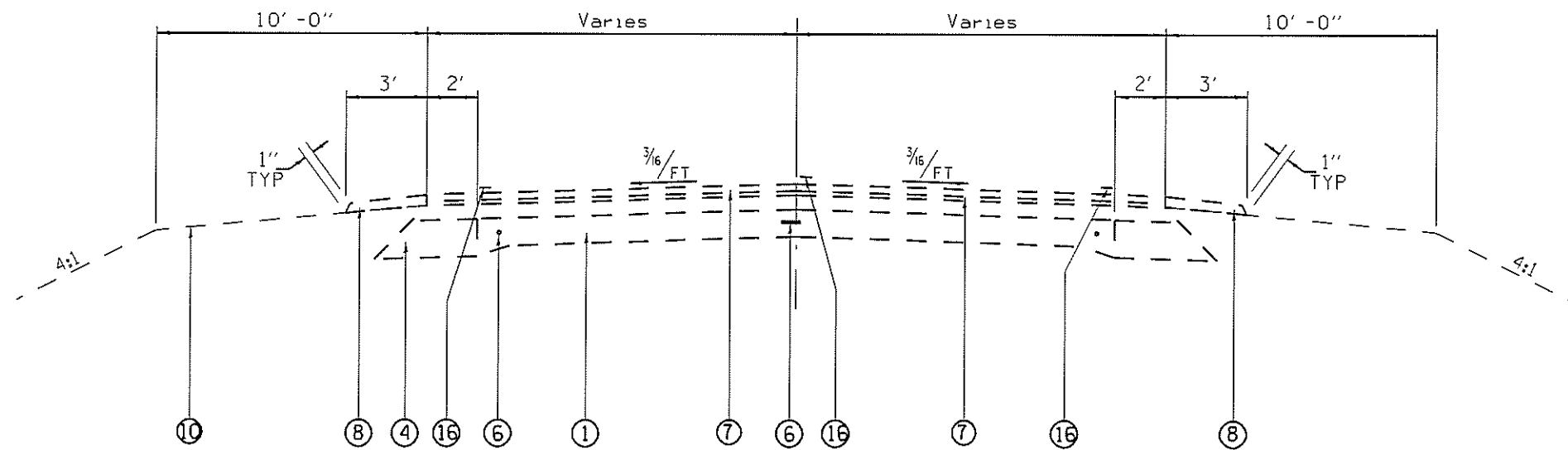
STA. 650+69.37 BK = STA. 2191+15.89 AH

LEGEND

- ① EX. PCC PAVEMENT - 8"
- ② EX. PCC BASE COURSE - 8"
- ③ EX. PCC BASE COURSE WIDENING - 8"
- ④ EX. BIT. BASE COURSE WIDENING - 9"
- ④a EX. BIT. BASE COURSE - VAR. DEPTH
- ⑤ EX. CONSTRUCTION JOINT (CIRC. CR 1-1/4")
- ⑥ EX. STEEL TIE BAR
- ⑦ EX. BITUMINOUS OVERLAY - 2" to 4"
- ⑧ EX. AGGREGATE SHOULDER
- ⑨ EX. BITUMINOUS SHOULDER - 8"
- ⑩ EX. EARTH SHOULDER
- ⑪ EX. SUB-BASE GRANULAR MATERIAL, TYPE A
- ⑫ EX. SIDEWALK
- ⑬ EX. GUTTER, TYPE B
- ⑭ EX. COMBINATION CONCRETE CURB & GUTTER
- ⑮ EX. PCC CURB
- ⑯ EX. THERMOPLASTIC PAV'T MARKING LINE - 5"
- ⑰ EX. CONSTRUCTION JOINT (CIRC. CR 1-1/4")

FILE NAME =	USER NAME = sharpjd	DESIGNED -	REVISED -	STATE OF ILLINOIS DEPARTMENT OF TRANSPORTATION	TYPICAL SECTIONS	F.A.P. RTE.	SECTION	COUNTY	TOTAL SHEETS	SHEET NO.
S:\CONTRACT\MAINT\CAD\72L49\plans\72L49-sharpjd-13-21-typical.dgn	PLOT SCALE = 8/32" = 1/4" = 1/8" / in.	DRAWN -	REVISED -			VAR	05 PATCHING MACOUPIN	MACOUPIN	21	13
Default	PLOT DATE = 2/24/2020	CHECKED -	REVISED -			CONTRACT NO. 72L49				
		DATE -	REVISED -			ILLINOIS FED. AID PROJECT				

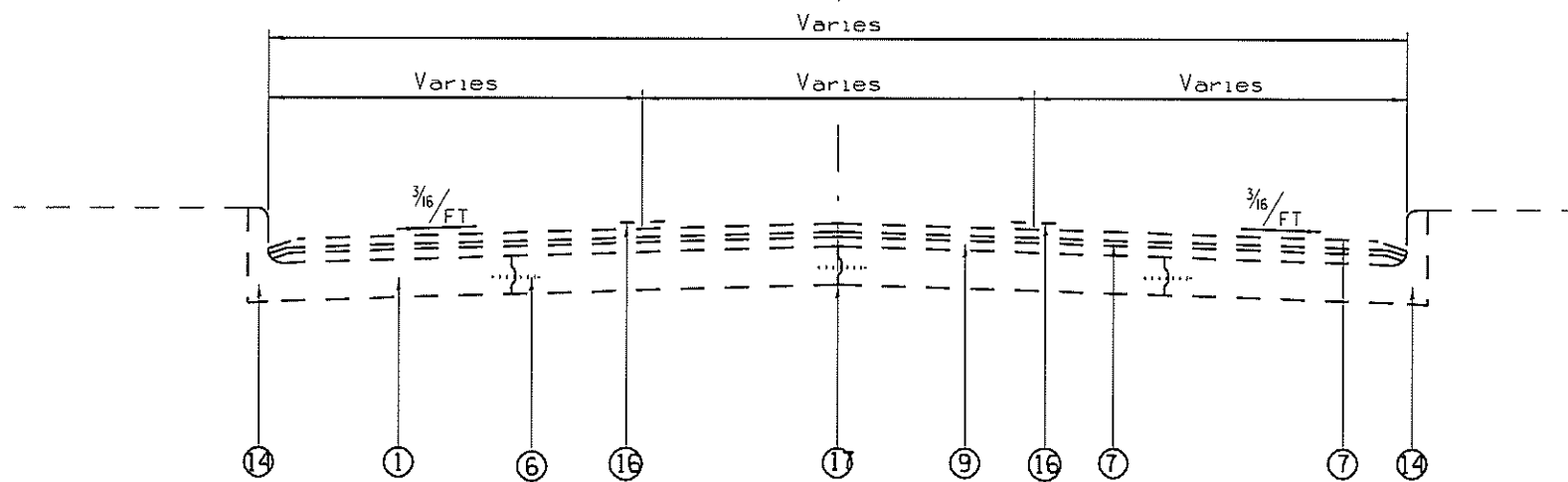
F.A. RT 662 (IL 4)



LOCATION #1

STA. 9+94.3 TO STA. 32+98.17
STA. 6+22.2 TO STA. 9+94.3

F.A. RT 662 (IL 4)

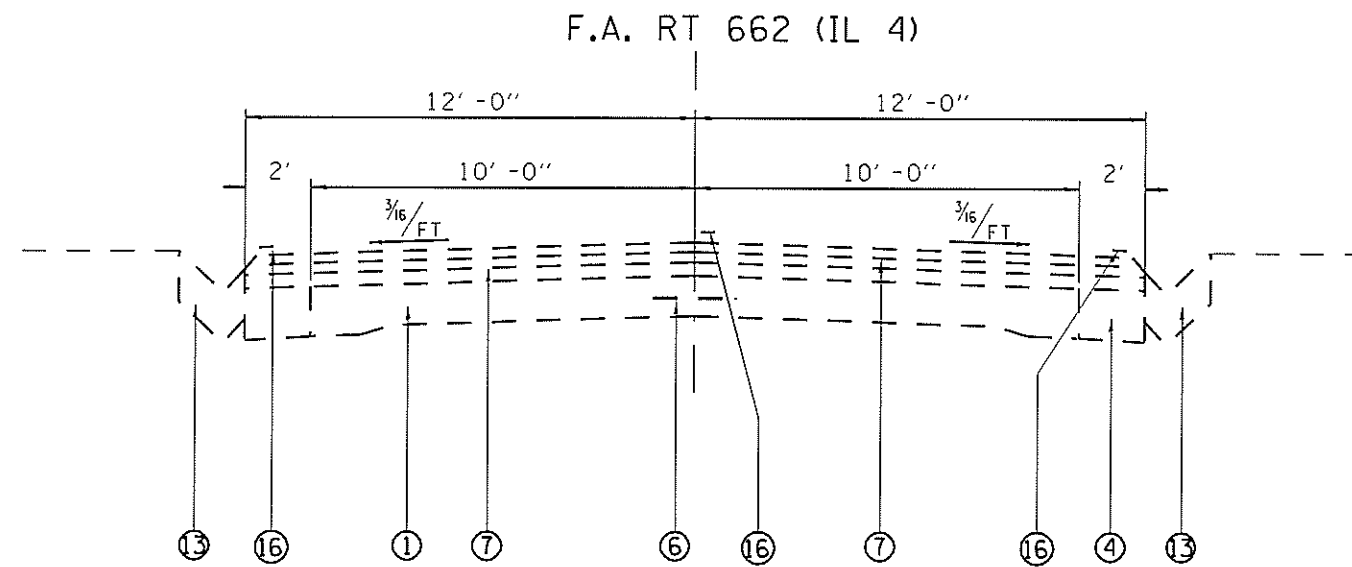


LOCATION #1

STA. 99+74.60 AH TO STA. 117+44
STA. 32+98.17 TO STA. 48+10

LEGEND

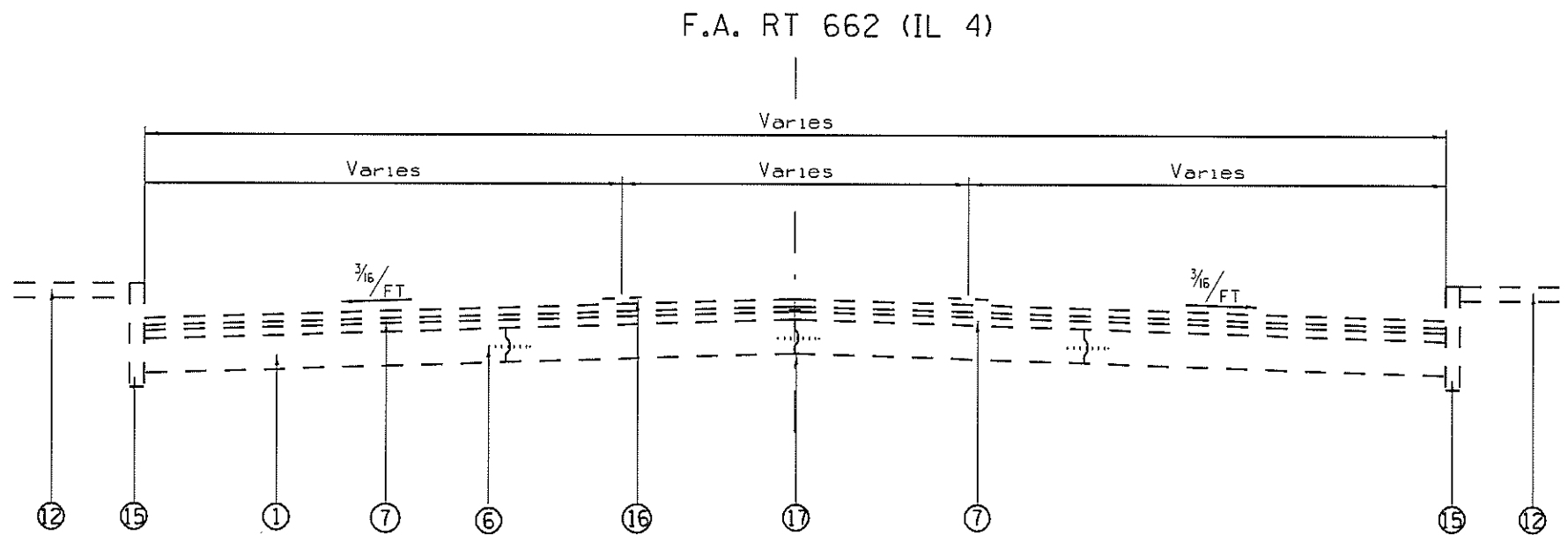
- ① EX. PCC PAVEMENT - 8"
- ② EX. PCC BASE COURSE - 8"
- ③ EX. PCC BASE COURSE WIDENING - 8"
- ④ EX. BIT. BASE COURSE WIDENING - 9"
- ④a EX. BIT. BASE COURSE - VAR. DEPTH
- ⑤ EX. CONSTRUCTION JOINT (CIRC. CR 1-1/4")
- ⑥ EX. STEEL TIE BAR
- ⑦ EX. BITUMINOUS OVERLAY - 2" to 4"
- ⑧ EX. AGGREGATE SHOULDER
- ⑨ EX. BITUMINOUS SHOULDER - 8"
- ⑩ EX. EARTH SHOULDER
- ⑪ EX. SUB-BASE GRANULAR MATERIAL, TYPE A
- ⑫ EX. SIDEWALK
- ⑬ EX. GUTTER, TYPE B
- ⑭ EX. COMBINATION CONCRETE CURB & GUTTER
- ⑮ EX. PCC CURB
- ⑯ EX. THERMOPLASTIC PAV'T MARKING LINE - 5"
- ⑰ EX. CONSTRUCTION JOINT (CIRC. CR 1-1/4")



LOCATION #1

STA. 57+50 TO STA. 64+86.56

STA. EQUATION
 STA. 64+86.56 BK = STA. 86+78.38 AH



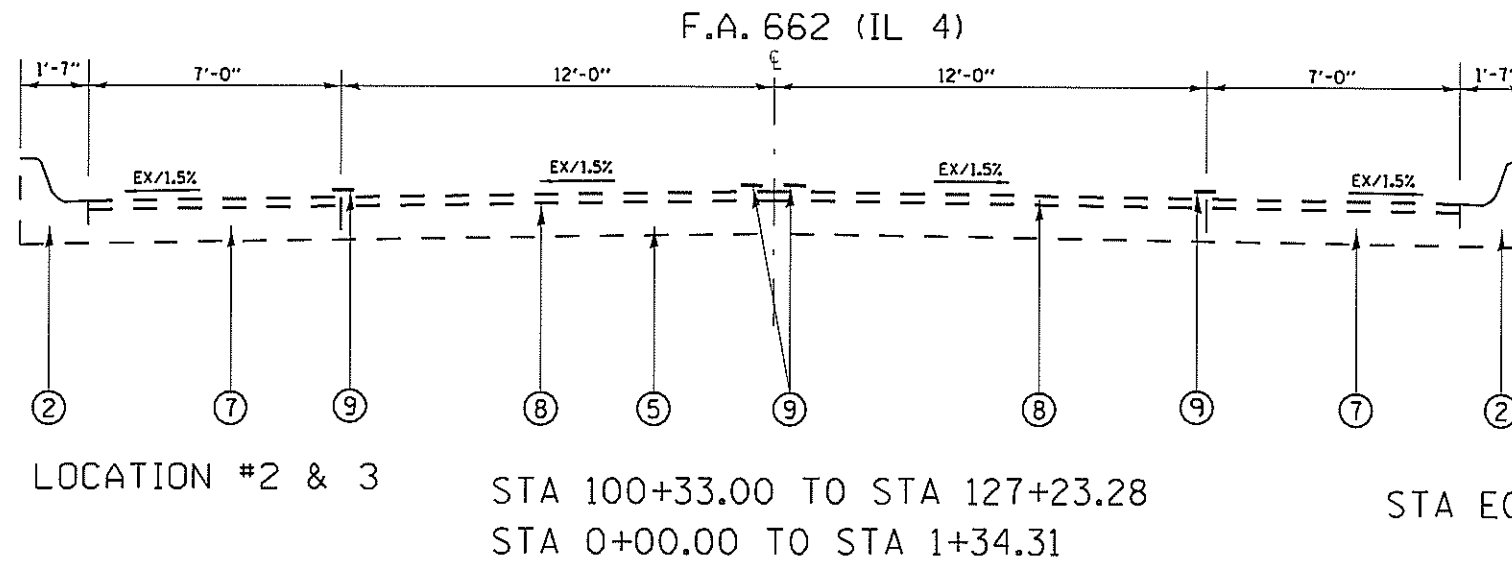
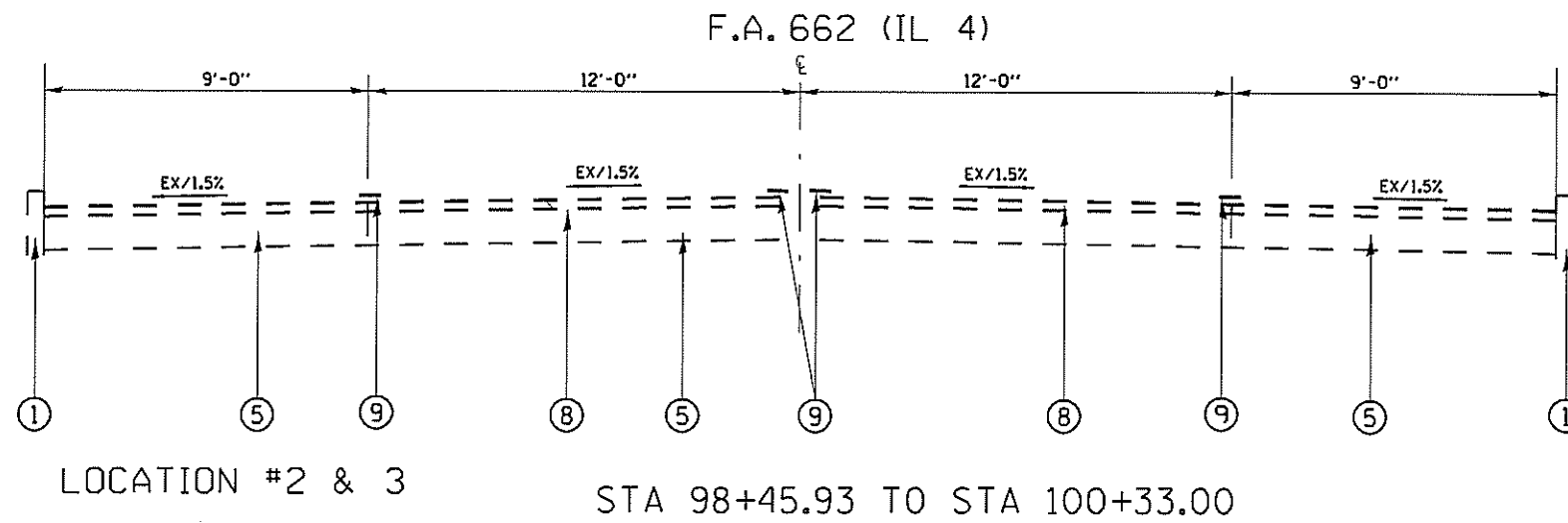
LOCATION #1

STA. 117+44 TO STA. 119+38
 STA. 86+78.38 TO STA. 99+74.60

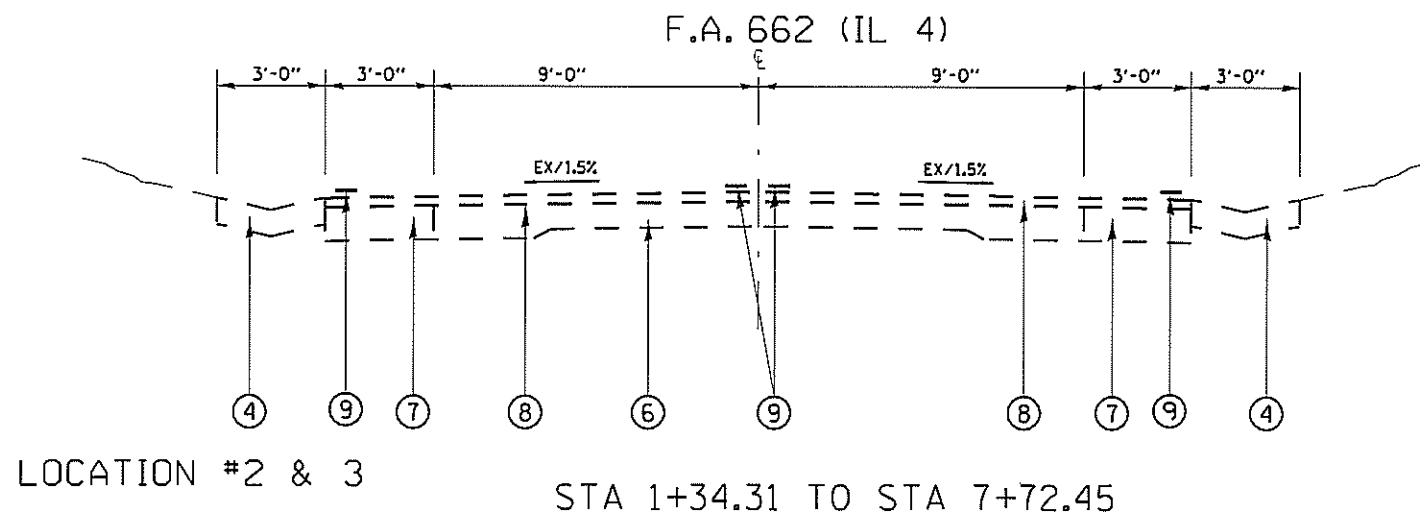
LEGEND

- ① EX. PCC PAVEMENT - 8"
- ② EX. PCC BASE COURSE - 8"
- ③ EX. PCC BASE COURSE WIDENING - 8"
- ④ EX. BIT. BASE COURSE WIDENING - 9"
- ④a EX. BIT. BASE COURSE - VAR. DEPTH
- ⑤ EX. CONSTRUCTION JOINT (CIRC. CR 1-1/4")
- ⑥ EX. STEEL TIE BAR
- ⑦ EX. BITUMINOUS OVERLAY - 2" to 4"
- ⑧ EX. AGGREGATE SHOULDER
- ⑨ EX. BITUMINOUS SHOULDER - 8"
- ⑩ EX. EARTH SHOULDER
- ⑪ EX. SUB-BASE GRANULAR MATERIAL, TYPE A
- ⑫ EX. SIDEWALK
- ⑬ EX. GUTTER, TYPE B
- ⑭ EX. COMBINATION CONCRETE CURB & GUTTER
- ⑮ EX. PCC CURB
- ⑯ EX. THERMOPLASTIC PAV'T MARKING LINE - 5"
- ⑰ EX. CONSTRUCTION JOINT (CIRC. CR 1-1/4")

FILE NAME =	USER NAME = sharpd	DESIGNED -	REVISED -	STATE OF ILLINOIS DEPARTMENT OF TRANSPORTATION	TYPICAL SECTIONS	F.A.P. RTE.	SECTION	COUNTY	TOTAL SHEET NO.	
S:\CONTRMAINT_CAD\72L49\plans\72L49-sharpd-13-21-typicals.dgn		DRAWN -	REVISED -			VAR	06 PATCHING MACOUPIN	MACOUPIN	2)	15
PLOT SCALE = 69.8841' / in.		CHECKED -	REVISED -			CONTRACT NO. 72L49				
PLOT DATE = 2/24/2020		DATE -	REVISED -			ILLINOIS FED. AID PROJECT				
Default				SCALE:	SHEET 3	OF 9	SHEETS	STA.	TO STA.	

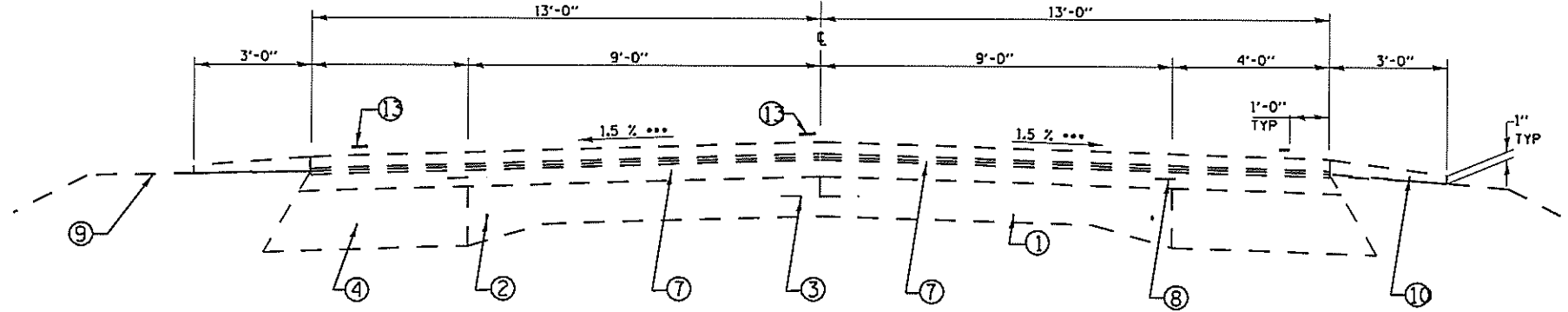


STA EQN: STA 127+23.28 (BK)
STA 0+00.00 (AHD)



- LEGEND
- ① EX CONC. CURB
 - ② EX COMB. CONC. CURB AND GUTTER
 - ③ EX CONC. GUTTER, TY-B
 - ④ EX CONC. GUTTER, TY-A
 - ⑤ EX BRICK PAVEMENT
 - ⑥ EX PCC PAVEMENT, 9"-6"-9"
 - ⑦ EX PCC BASE COURSE WIDENING, 9"
 - ⑧ EX BIT. CONC. OVERLAY
 - ⑨ EX PREF. PLASTIC PAVEMENT MARKING TY-B - LINE 5" (INLAID)

F.A.P. 769 (IL 108)



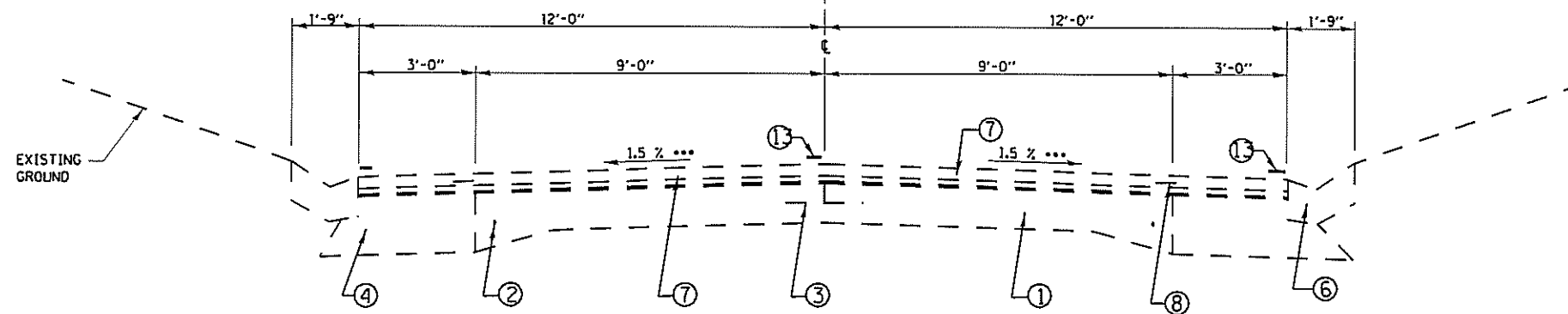
LOCATION #3

STA. 20+00 TO STA. 25+44.70
 STA. EQ. STA. 25+44.70 BK. = STA. 25+81.10 AH.
 STA. 25+81.10 TO STA. 40+16.10
 STA. EQ. STA. 40+16.10 BK. = STA. 39+05.90 AH.
 STA. 39+05.90 TO STA. 50+47.00

LEGEND

- ① EXISTING PCC PAVEMENT (9" - 6" - 9")
- ② EXISTING 3/4" SMOOTH BAR
- ③ EXISTING 1/2" TIE BAR
- ④ EXISTING BITUMINOUS WIDENING 9"
- ⑤ EXISTING BITUMINOUS CONCRETE BASE COURSE (9")
- ⑥ EXISTING CONCRETE GUTTER TYPE B
- ⑦ EXISTING BITUMINOUS CONCRETE OVERLAY (3" & VARIES)
- ⑧ EXISTING STRIP REFLECTIVE CRACK CONTROL TREATMENT
- ⑨ EXISTING EARTH SHOULDER
- ⑩ EXISTING AGGREGATE SHOULDER, TYPE B
- ⑪ EXISTING BITUMINOUS SHOULDERS (6" & VARIES)
- ⑫ EXISTING BITUMINOUS SHOULDER 3"
- ⑬ EXISTING PAINT PAVEMENT MARKING LINE 5"

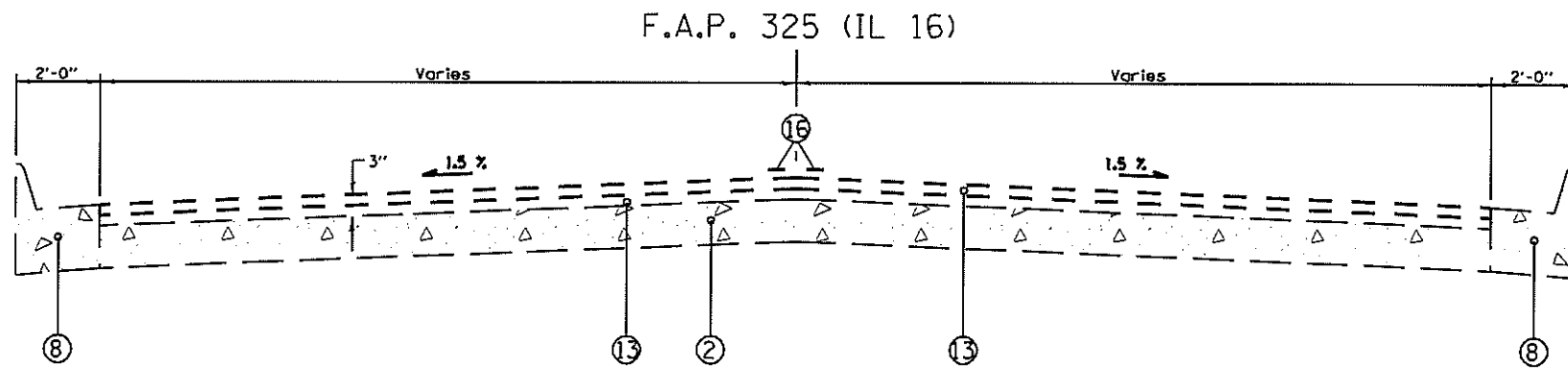
F.A.P. 769 (IL 108)



LOCATION #3

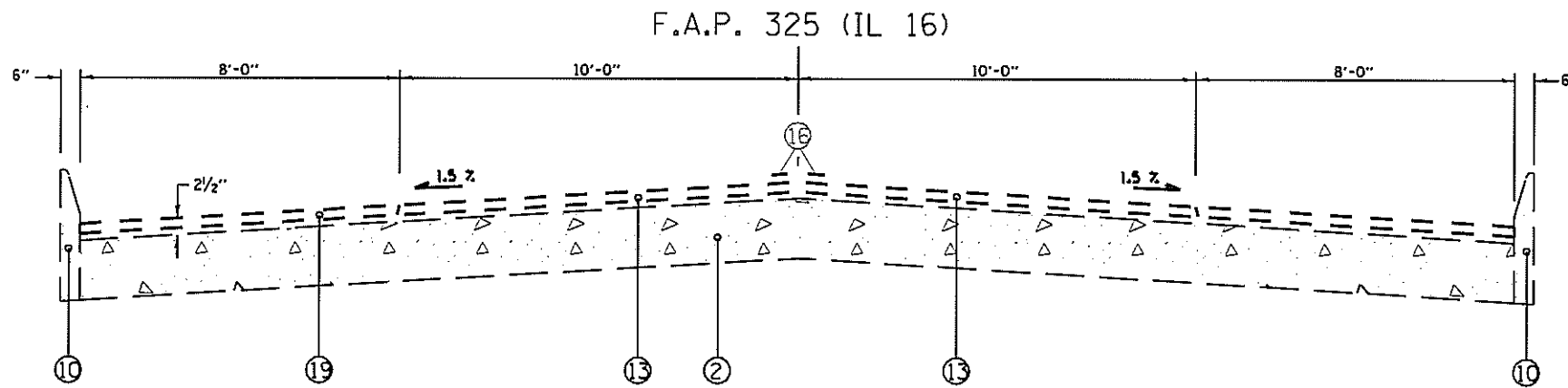
STA. 11+85 TO STA. 13+34.10
 STA. EQ. STA. 13+34.10 BK. = STA. 13+35.30 AH.
 STA. 13+35.30 TO STA. 20+00

FILE NAME =	USER NAME = shorptd	DESIGNED -	REVISED -	STATE OF ILLINOIS DEPARTMENT OF TRANSPORTATION	TYPICAL SECTIONS		F.A.P. RTE.	SECTION	COUNTY	TOTAL SHEETS	SHEET NO.	
S:\CDNTRMAINT\CAD\72L49\plans\72L49-sh	13-21-typicals.dgn	DRAWN -	REVISED -				VAR	D6 PATCHING MACOUPIN	MACOUPIN	21	17	
Default	PLOT SCALE = 105.9826 / in.	CHECKED -	REVISED -		SCALE:		SHEET 5 OF 9 SHEETS		STA.	TO STA.	CONTRACT NO. 72L49	
	PLOT DATE = 2/24/2020	DATE -	REVISED -		ILLINOIS FED. AID PROJECT							



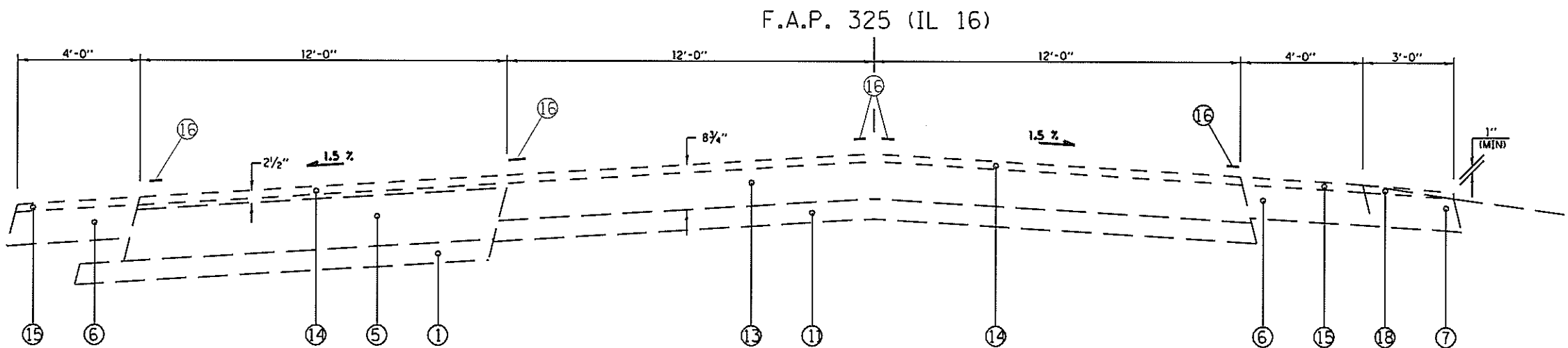
LOCATION #4

STA 433+05.00 TO 433+35.00
 STA 433+35.00 TO 433+89.87
 STA 457+49.37 TO 460+88.56



LOCATION #4

STA 433+89.87 TO 457+49.37



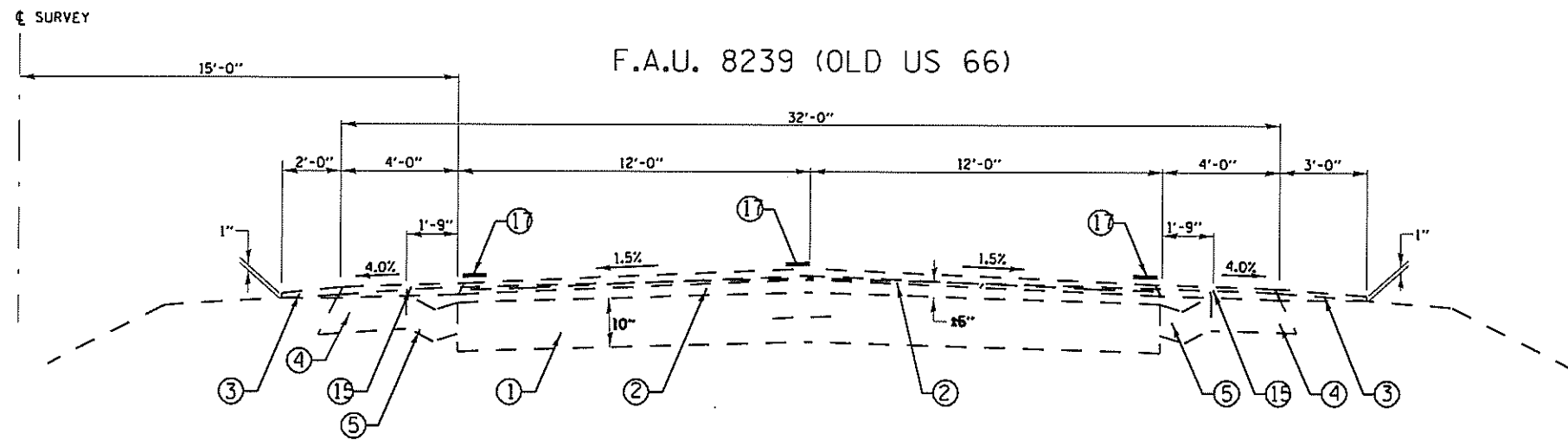
LOCATION #4

STA 460+88.56 TO 462+63.41

LEGEND

- ① EXIST. SUB-BASE GRANULAR MATERIAL 4"
- ② EXIST. P.C.C. PAVEMENT 6"
- ③ EXIST. P.C.C. PAVEMENT 9"
- ④ EXIST. BITUMINOUS CONCRETE BASE COURSE WIDENING 9"
- ⑤ EXIST. BITUMINOUS CONCRETE BASE COURSE 10"
- ⑥ EXIST. BITUMINOUS SHOULDER 8"
- ⑦ EXIST. AGGREGATE SHOULDERS 8"
- ⑧ EXIST. COMBINATION CONCRETE CURB AND GUTTER TY B-6.18
- ⑨ EXIST. COMBINATION CONCRETE CURB AND GUTTER TY B-6.24
- ⑩ EXIST. CONCRETE CURB TY 4
- ⑪ EXIST. AGGREGATE BASE COURSE 4"
- ⑫ EXIST. AGGREGATE BASE COURSE 6"
- ⑬ EXIST. BITUMINOUS CONCRETE OVERLAY
- ⑭ EXIST. BITUMINOUS CONCRETE OVERLAY (VARIABLE DEPTH)
- ⑮ EXIST. BITUMINOUS SHOULDERS SUPERPAVE
- ⑯ EXIST. THERMOPLASTIC PAVEMENT MARKING
- ⑰ EXIST. PAINT PAVEMENT MARKING
- ⑱ EXIST. AGGREGATE SHOULDERS, TYPE B

FILE NAME =	USER NAME = sharptd	DESIGNED -	REVISED -	STATE OF ILLINOIS DEPARTMENT OF TRANSPORTATION	TYPICAL SECTIONS		F.A.P. RTE.	SECTION	COUNTY	TOTAL SHEETS	SHEET NO.
S:\CONTRM\INT_CAD\72L49\plans\72L49-sh-12-21-typical.dgn	PLOT SCALE = 108.8237' / in.	DRAWN -	REVISED -				VAR	D6 PATCHING MACOUPIN	MACOUPIN	21	18
Default	PLOT DATE = 2/24/2020	CHECKED -	REVISED -		SCALE:	SHEET 6	OF 9 SHEETS	STA.	TO STA.	ILLINOIS FED. AID PROJECT	
		DATE -	REVISED -							CONTRACT NO. 72L49	

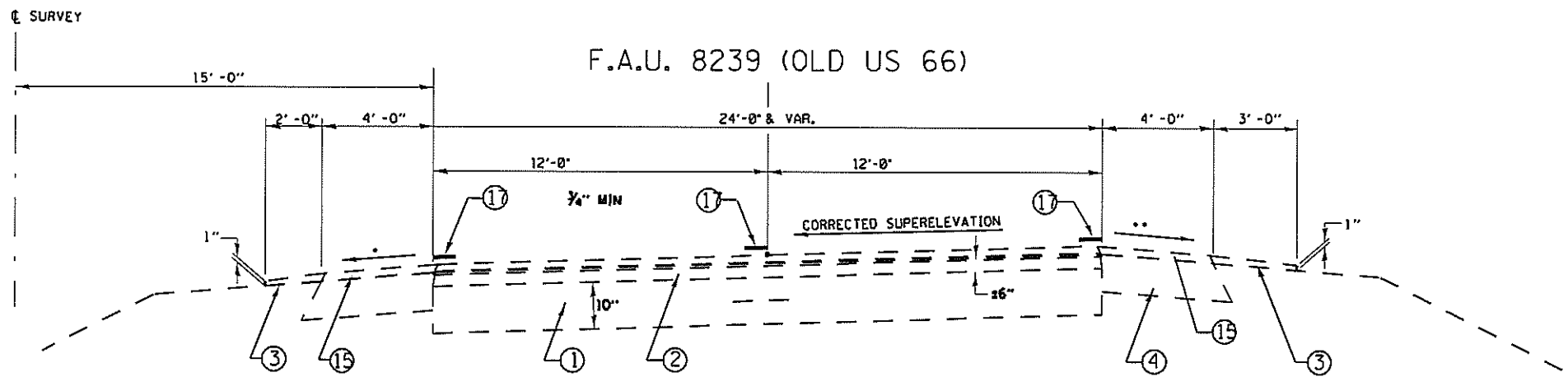


LOCATION #5

LT. STA. 1145+77 TO STA. 1190+54
 LT. STA. 1227+40 TO STA. 1235+11
 LT. STA. 1251+68 TO STA. 1253+82

RT. STA. 1152+18 TO STA. 1156+47
 RT. STA. 1229+00 TO STA. 1233+30
 RT. STA. 1251+68 TO STA. 1255+62

- LEGEND
- ① EXIST. PCC PAVEMENT - 10"
 - ② EXIST. BITUMINOUS CONCRETE OVERLAY - VAR.
 - ③ EXIST. AGGREGATE SHOULDERS
 - ④ EXIST. BITUMINOUS SHOULDERS 8"
 - ⑤ EXIST. CONCRETE GUTTER, TYPE B
 - ⑥ EXIST. COMBINATION CONCRETE CURB & GUTTER
 - ⑦ EXIST. CONCRETE CURB
 - ⑧ EXIST. STABILIZED BASE COURSE 9"
 - ⑨ EXIST. BASE COURSE WIDENING 9"
 - ⑩ EXIST. STABILIZED SUB-BASE 4"
 - ⑪ EXIST. PCC PAVEMENT (9 1/2"-6 1/2"-9 1/2" OR 9"-6"-9")
 - ⑫ EXIST. PCC BASE COURSE WIDENING 8"
 - ⑬ EXIST. CONCRETE GUTTER, TYPE A
 - ⑭ EXIST. CONCRETE MEDIAN
 - ⑮ EXIST. BITUMINOUS SHOULDERS SUPERPAVE
 - ⑯ EXIST. STRIP REFLECTIVE CRACK CONTROL TREATMENT
 - ⑰ EXIST. PAINT PAVEMENT MARKING LINE 5"

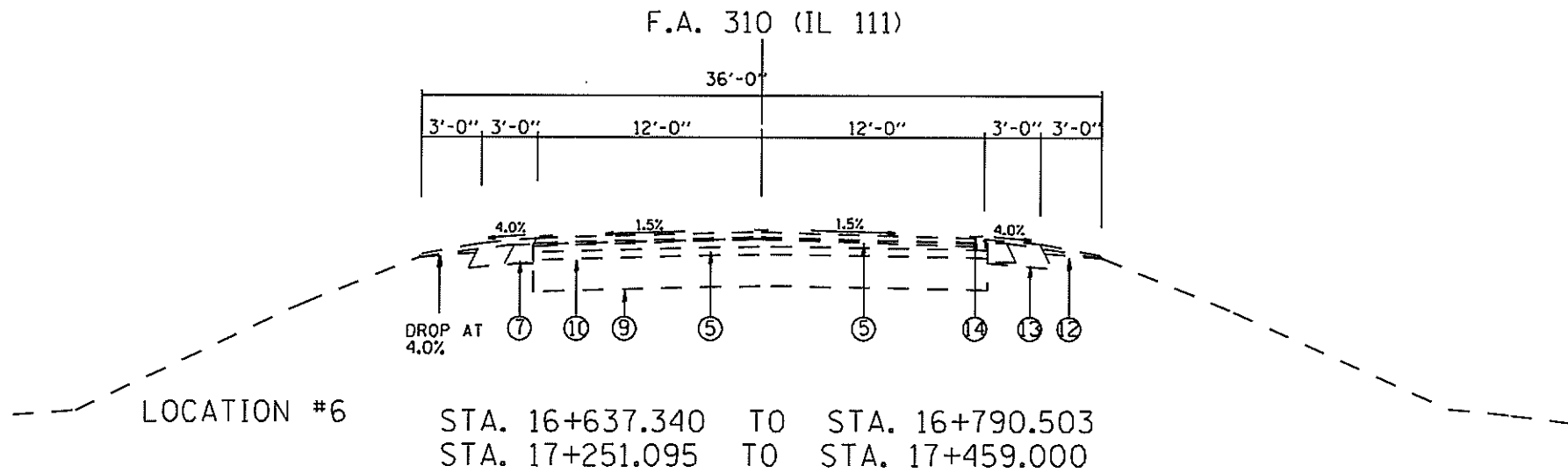


LOCATION #5

LT. STA. 1030+00 TO STA. 1145+77
 LT. STA. 1190+54 TO STA. 1227+40
 LT. STA. 1235+11 TO STA. 1251+68
 LT. STA. 1253+82 TO STA. 1296+20

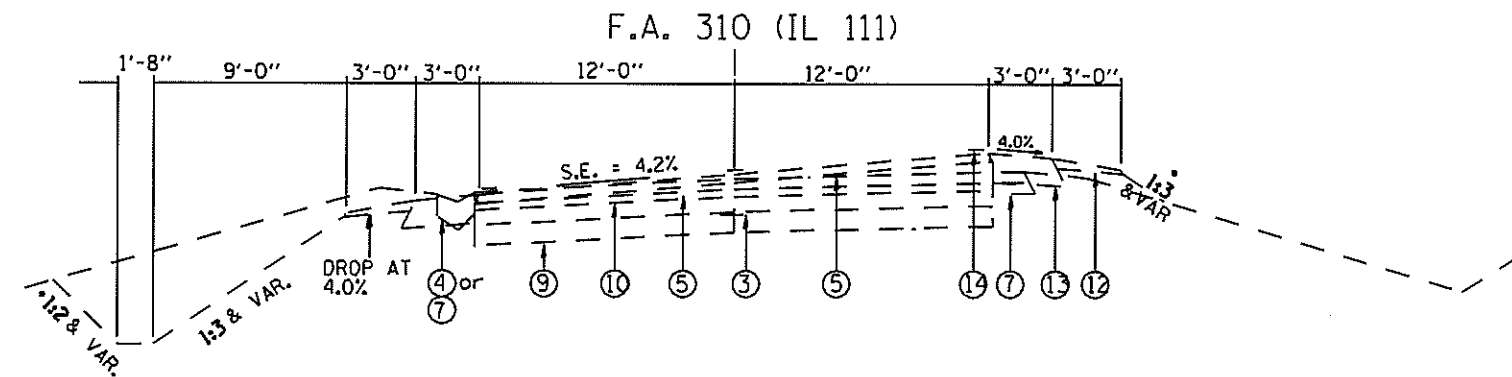
RT. STA. 1030+00 TO STA. 1152+18
 RT. STA. 1156+47 TO STA. 1229+00
 RT. STA. 1233+30 TO STA. 1251+68
 RT. STA. 1255+62 TO STA. 1296+20

FILE NAME =	USER NAME = shorptd	DESIGNED -	REVISED -	STATE OF ILLINOIS DEPARTMENT OF TRANSPORTATION	TYPICAL SECTIONS	F.A.P. RTE.	SECTION	COUNTY	TOTAL SHEETS	SHEET NO.	
S:\CONTRMAINT_CAD\72L49\plans\72L49-sh-13-21-typical.dgn	PLOT SCALE = 105.8825' / in.	DRAWN -	REVISED -			VAR	06 PATCHING MACOUPIN	MACOUPIN	21	19	
Default	PLOT DATE = 2/24/2020	CHECKED -	REVISED -			CONTRACT NO. 72L49					
						ILLINOIS FED. AID PROJECT					



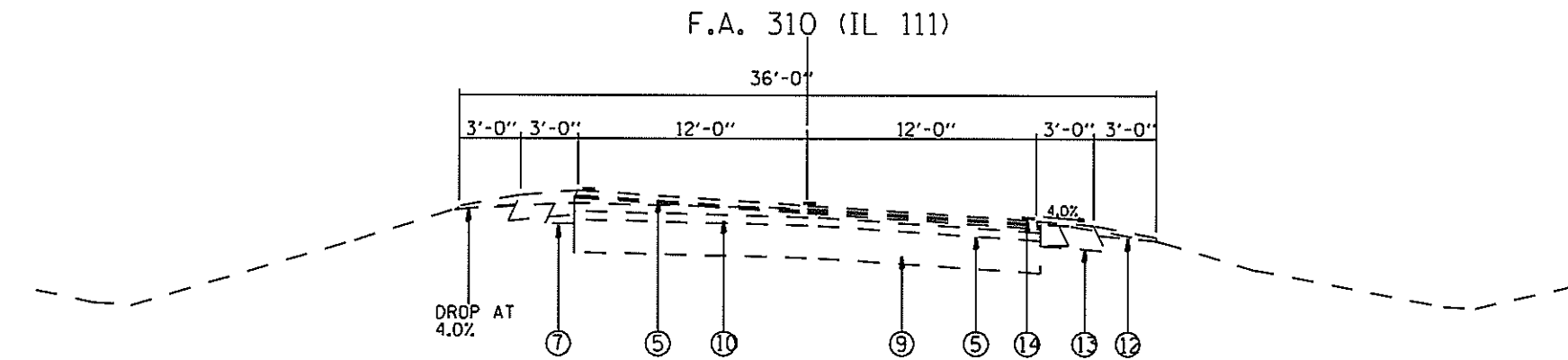
LOCATION #6

STA. 16+637.340 TO STA. 16+790.503
 STA. 17+251.095 TO STA. 17+459.000



LOCATION #6

STA. 15+457.340 TO STA. 16+637.340



LOCATION #6

STA. 16+790.503 TO STA. 17+251.095

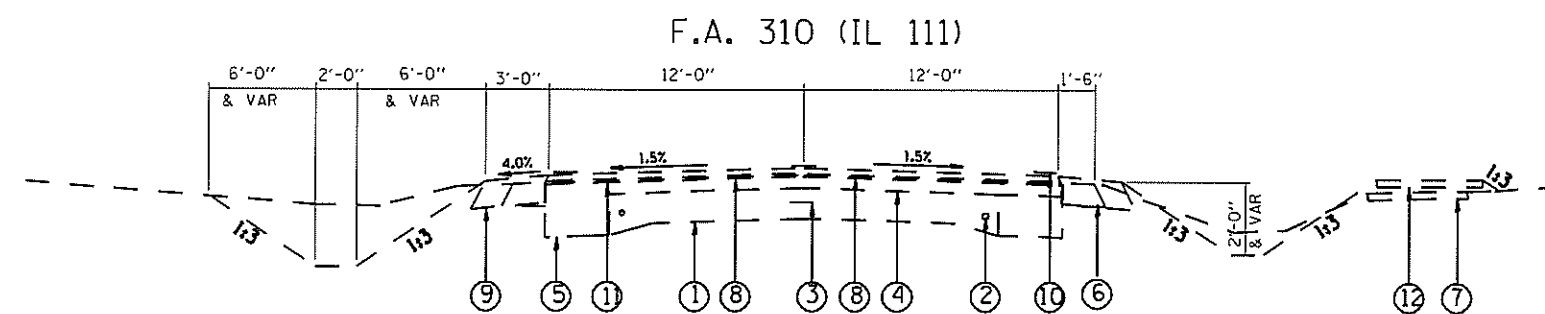
LEGEND

- ① EXIST. PCC PAVEMENT (9 in - 6 in - 9 in)
- ② EXIST. 3/4 in DIA. SMOOTH BAR
- ③ EXIST. METAL JOINT WITH 1/2 in DIA. DEFORMED BAR
- ④ EXIST. CONCRETE GUTTER
- ⑤ EXIST. BITUMINOUS CONCRETE SURFACE
- ⑥ EXIST. PORTLAND CEMENT CONCRETE WIDENING 9 in
- ⑦ EXIST. BITUMINOUS SHOULDER 6 in (TO BE REMOVED)
- ⑧ EXIST. PORTLAND CEMENT CONCRETE BASE COURSE 9 in
- ⑨ EXIST. PORTLAND CEMENT CONCRETE PAVEMENT 10 in
- ⑩ EXIST. PAVEMENT FABRIC
- ⑪ EXIST. SUB-BASE GRANULAR MATERIAL 4 in
- ⑫ EXIST. AGGREGATE SHOULDER, TYPE B
- ⑬ EXIST. BITUMINOUS SHOULDER, 8 in
- ⑭ EXIST. PAINT PAVEMENT MARKING - LINE 5 in
- ⑮ EXIST. STRIP REFLECTIVE CRACK CONTROL TREATMENT

FILE NAME *	USER NAME = sharptd	DESIGNED -	REVISED -	STATE OF ILLINOIS DEPARTMENT OF TRANSPORTATION	TYPICAL SECTIONS	F.A.P. RTE.	SECTION	COUNTY	TOTAL SHEETS	SHEET NO.	
S:\CONTRMNT_CAD\72L49\plans\72L49-sh-13-21-typical.dgn	PLOT SCALE = 27.0001' / in.	DRAWN -	REVISED -			VAR	D6 PATCHING	MACOUPIN	MACOUPIN	21	20
Default	PLOT DATE = 2/24/2020	CHECKED -	REVISED -			CONTRACT NO. 72L49					
		DATE -	REVISED -			ILLINOIS FED. AID PROJECT					

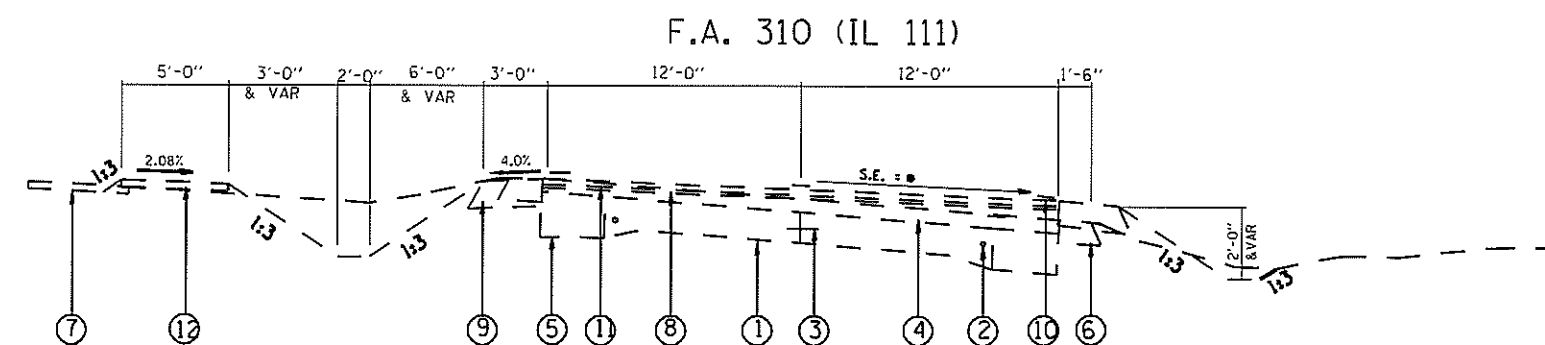
LEGEND

- ① EXIST. PCC PAVEMENT (9 in - 6 in - 9 in)
- ② EXIST. 3/4in DIA. SMOOTH BAR
- ③ EXIST. METAL JOINT WITH 1/2in DIA. DEFORMED BAR
- ④ EXIST. BITUMINOUS CONCRETE SURFACE 6 in
- ⑤ EXIST. PORTLAND CEMENT CONCRETE WIDENING 9 in
- ⑥ EXIST. BITUMINOUS SHOULDER 6 in (TO BE REMOVED)
- ⑦ EXIST. CONCRETE SIDEWALK (TO BE REMOVED)
- ⑧ EXIST. BITUMINOUS CONCRETE SURFACE OVERLAY
- ⑨ EXIST. BITUMINOUS SHOULDER, 8 in
- ⑩ EXIST. THERMOPLASTIC PAVEMENT MARKING - LINE 5 in
- ⑪ EXIST. STRIP REFLECTIVE CRACK CONTROL TREATMENT
- ⑫ EXIST. PORTLAND CEMENT CONCRETE SIDEWALK, 4 in



LOCATION #7

STA. 0+273.129 TO STA. 0+728.036
 STA. 0+999.270 TO STA. 1+086.886
 STA. 1+240.020 TO STA. 1+807.600



LOCATION #7

STA. 0+061.000 TO STA. 0+273.129
 STA. 0+728.036 TO STA. 0+999.270
 STA. 1+086.886 TO STA. 1+240.020

FILE NAME =	USER NAME = sharptd	DESIGNED -	REVISED -	STATE OF ILLINOIS DEPARTMENT OF TRANSPORTATION	TYPICAL SECTIONS	F.A.P. RTE.	SECTION	COUNTY	TOTAL SHEETS	SHEET NO.	
S:\CONTRMAINT\CAD\72L49\plans\72L49-sh-13-21-typical.dgn		DRAWN -	REVISED -			VAR	D6 PATCHING MACOUPIN	MACOUPIN	21	21	
PLOT SCALE = 27,000 / in.		CHECKED -	REVISED -			CONTRACT NO. 72L49					
Default		DATE -	REVISED -			ILLINOIS FED. AID PROJECT					
					SCALE:	SHEET 9 OF 9 SHEETS STA. TO STA.					