

121

04-24-2020 LETTING ITEM 121

STATE OF ILLINOIS
DEPARTMENT OF TRANSPORTATION
DIVISION OF HIGHWAYS

PROPOSED
HIGHWAY PLANS

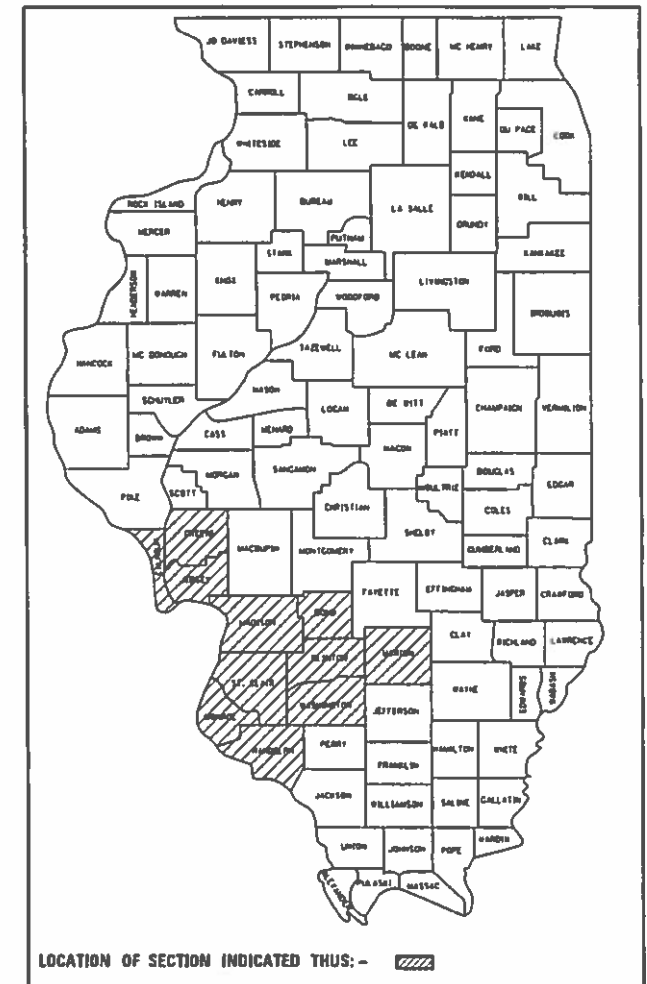
VARIOUS ROUTES
SECTION DIST 8 PATCHING 2020-1
PATCHING
VARIOUS COUNTIES

C-98-060-20

F.A. RTE.	SECTION	COUNTY	TOTAL SHEETS	SHEET NO.
**	.	VARIOUS	5	1

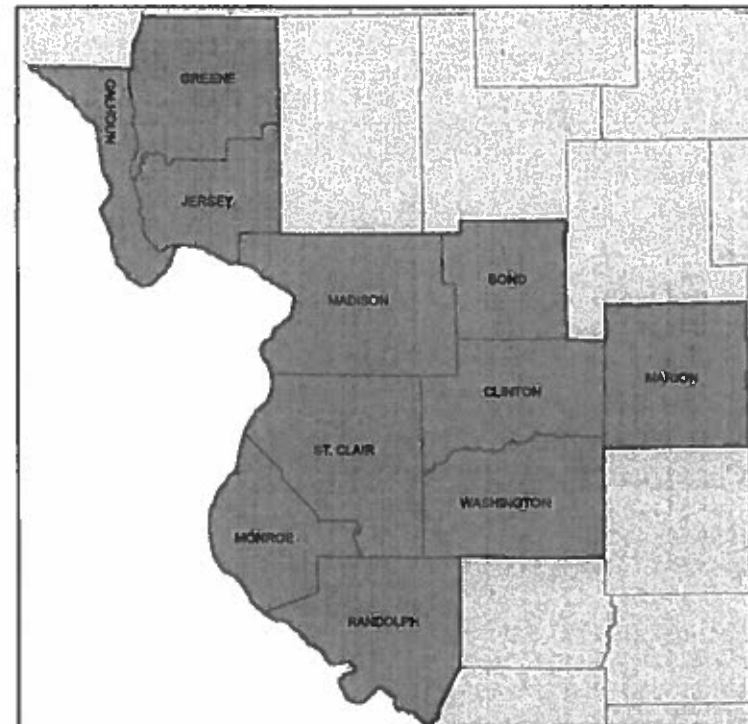
ILLINOIS
DIST 8 PATCHING 2020-1
VARIOUS

D-98-046-20

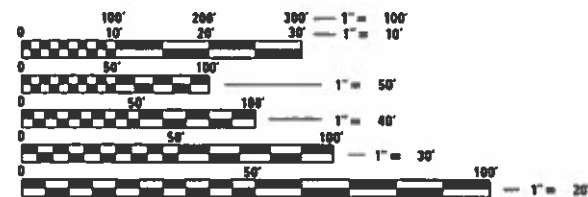


INDEX OF SHEETS

1. COVER SHEET
2. HIGHWAY STANDARDS, GENERAL NOTES, AND COMMITMENTS
- 3.-4. SUMMARY OF QUANTITIES
5. DETAILS



NOT TO SCALE



FULL SIZE PLANS HAVE BEEN PREPARED USING STANDARD ENGINEERING SCALES. REDUCED SIZED PLANS WILL NOT CONFORM TO STANDARD SCALES. IN MAKING MEASUREMENTS ON REDUCED PLANS, THE ABOVE SCALES MAY BE USED.

J.U.L.I.E.
JOINT UTILITY LOCATION INFORMATION FOR EXCAVATION
1-800-892-8123
OR 811

PROJECT ENGINEER: HERVE GELIN (618) 346-3179
PROJECT MANAGER: BILLIE OWEN (618) 346-3209
PROJECT LEADER: CRAIG POETTKER (618) 346-3279

CONTRACT NO. 76N20

STATE OF ILLINOIS
DEPARTMENT OF TRANSPORTATION

SUBMITTED *Jan 24 2020*
Keith Roberts
REGIONAL ENGINEER

Mauch 2020
S. A. E. E.
ENGINEER OF DESIGN AND ENVIRONMENT

Mauch 2020
DIRECTOR OF HIGHWAYS PROJECT IMPLEMENTATION

PRINTED BY THE AUTHORITY
OF THE STATE OF ILLINOIS

HIGHWAY STANDARDS

000001-07	701400-09
001001-02	701401-12
001006	701406-12
420001-09	701411-09
420101-06	701421-08
420106-06	701422-10
420701-03	701446-10
421001-03	701456-05
421101-10	701501-06
442001-04	701502-09
442101-09	701601-09
442201-03	701602-10
601001-05	701606-10
701201-05	701701-10
701206-05	701901-08
701336-07	

I.D.O.T. CONTACT PERSONS

CRAIG POETTKER, ZONE 1: GREENE, JERSEY, MADISON AND CALHOUN COUNTIES	OFFICE PHONE (618) 346-3279
TIM PRICE, ZONE 2: ST. CLAIR, AND MONROE COUNTIES	OFFICE PHONE (618) 346-3284
JOE MONROE, ZONE 3: CLINTON, WASHINGTON, BOND, MARION, AND RANDOLPH COUNTIES	OFFICE PHONE (618) 346-3250

GENERAL NOTES

1. LONGITUDINAL DIMENSIONS MAY BE ADJUSTED TO FIT FIELD CONDITIONS. THE LATERAL PLACEMENT OF THE FLAGGER MAY BE VARIED FROM THAT SHOWN.
2. FORM BSE 725 IS REQUIRED.
3. NO OVERNIGHT LANE CLOSURES WILL BE ALLOWED ON TWO-LANE, TWO-WAY PAVEMENT.
4. ILLINOIS STATE LAW REQUIRES A 48-HOUR NOTICE TO BE GIVEN TO UTILITIES BEFORE DIGGING. FIELD MARKING OF FACILITIES MAY BE OBTAINED BY CONTACTING J.U.L.I.E. (PHONE: 1-800-892-0123, OR 811) OR FOR NON-MEMBERS, THE UTILITY COMPANY DIRECTLY.
5. THE FOLLOWING MIXTURE REQUIREMENTS ARE APPLICABLE FOR THIS PROJECT:

MIXTURE USE	PATCHING
AC/PG	PG 64-22
RAP % (MAX)	10%
DESIGN AIR VOIDS	4.0% @ Ndes=90
MIX COMPOSITION (GRADATION MIXTURE)	IL 19.0
FRICITION AGG	MIXTURE B

PLAN QUANTITIES FOR HMA ITEMS ARE CALCULATED USING A UNIT WEIGHT OF 112 LB/SQ YD/IN.

6. THE DEPARTMENT STRONGLY ENCOURAGES THE PRIME CONTRACTOR AND THEIR APPROVED SUB-CONTRACTORS TO HIRE MINORITY, WOMEN AND DISADVANTAGED INDIVIDUALS FROM ITS FEDERALLY FUNDED HIGHWAY CONSTRUCTION CAREERS TRAINING PROGRAM (HCCTP) TO HELP MEET WORKFORCE AND TRAINEE GOALS. THIS PROGRAM IS TRAINING MINORITIES, WOMEN AND DISADVANTAGED INDIVIDUALS IN HIGHWAY CONSTRUCTION-RELATED SKILLS, E.G., MATH FOR THE TRADES, JOB READINESS, TECHNICAL SKILLS COURSEWORK (CARPENTRY, CONCRETE FLATWORK, BLUEPRINT READING, SITE PLANS, SITE WORK, TOOLS USE, ETC.) AND OSHA 10 HOUR CERTIFICATION, TO PREPARE THEM FOR A CAREER IN THE HIGHWAY CONSTRUCTION TRADES. GRADUATES ARE WELL-TRAINED AND READY TO BECOME PRODUCTIVE ENTRY-LEVEL CONSTRUCTION WORKERS. CONTACT THE DISTRICT 8 EEO OFFICE AT 618-346-3360 AND/OR THE HCCTP COORDINATOR AT 618-874-6528 TO LEARN MORE ABOUT THE PROGRAM AND FOR ASSISTANCE IN MEETING WORKFORCE AND TRAINEE GOALS
7. THE RESIDENT ENGINEER SHALL VERIFY THE EXISTENCE OF HIGHWAY LIGHTING AND/OR I.T.S. UTILITIES WITHIN THE PROJECT LIMITS. IF HIGHWAY LIGHTING AND/OR I.T.S. EXISTS WITHIN THE PROJECT LIMITS, AND IF THESE ITEMS REQUIRE LOCATING, THE CONTRACTOR SHALL BE DIRECTED TO DO SO ACCORDING TO SECTION 803 OF THE STANDARD SPECIFICATIONS. THIS WORK SHALL BE PAID FOR ACCORDING TO ARTICLE 109.04 OF THE STANDARD SPECIFICATIONS.
8. ALL TURF AREAS DISTURBED BY THE CONTRACTOR SHALL BE SEEDED WITH THE APPROPRIATE EROSION CONTROL AS DIRECTED BY THE ENGINEER AT THE CONTRACTOR'S EXPENSE.

COMMITMENTS

NONE

•• VARIOUS
• DIST 8 PATCHING 2020-1

FILE NAME =	USER NAME = lewisko	DESIGNED -	REVISED -	STATE OF ILLINOIS DEPARTMENT OF TRANSPORTATION	HIGHWAY STANDARDS, GENERAL NOTES, AND COMMITMENTS	F.A. RTE.	SECTION	COUNTY	TOTAL SHEETS	SHEET NO.
						••	•		VARIOUS	5
									CONTRACT NO.	76N20
						SCALE:	SHEET NO.	OF	SHEETS	STA.
										TO STA.
						FED. ROAD DIST. NO. ILLINOIS FED. AID PROJECT				

CODE NO.	ITEM	UNIT	TOTAL QUANTITY	CONSTR. CODE
				100% STATE
				NONE
				0006
				NONE
44200050	WELDED WIRE REINFORCEMENT	SQ YD	280	280
44201294	CLASS B PATCH - EXPANSION JOINT	FOOT	40	40
44213200	SAW CUTS	FOOT	3520	3520
44213204	TIE BARS 3/4"	EACH	144	144
50800105	REINFORCEMENT BARS	POUND	3520	3520
60100060	CONCRETE HEADWALLS FOR PIPE DRAINS	EACH	4	4
60100070	SHOULDER REMOVAL AND REPLACEMENT	FOOT	44	44
60100080	FRENCH DRAINS	CU YD	20	20
60108100	PIPE UNDERDRAINS 4" (SPECIAL)	FOOT	32	32
60108204	PIPE UNDERDRAINS, TYPE 2, 4"	FOOT	60	60
70100205	TRAFFIC CONTROL AND PROTECTION, STANDARD 701401	EACH	7	7
70100315	TRAFFIC CONTROL AND PROTECTION, STANDARD 701422	EACH	4	4
70100420	TRAFFIC CONTROL AND PROTECTION, STANDARD 701411	EACH	4	4
70100430	TRAFFIC CONTROL AND PROTECTION, STANDARD 701446	EACH	2	2

CODE NO.	ITEM	UNIT	TOTAL QUANTITY	CONSTR. CODE
				100% STATE
				NONE
				0006
				NONE
70103815	TRAFFIC CONTROL SURVEILLANCE	CAL DA	12	12
X0326889	PAVEMENT REPLACEMENT, HOT-MIX ASPHALT	CU YD	200	200
X6011605	PIPE DRAINS 4" (SPECIAL)	FOOT	32	32
X7010218	TRAFFIC CONTROL AND PROTECTION, (SPECIAL)	EACH	31	31
X7010410	SPEED DISPLAY TRAILER	CAL MO	3	3
Z0002700	BARRICADES	EACH	160	160
Z0008759	CALL OUT	EACH	5	5
Z0016001	DECK SLAB REPAIR (FULL DEPTH, TYPE I)	SQ YD	4	4
Z0016002	DECK SLAB REPAIR (FULL DEPTH, TYPE II)	SQ YD	4	4
Z0016200	DECK SLAB REPAIR (PARTIAL)	SQ YD	80	80
Z0017099	DOWEL BAR ASSEMBLY	EACH	6	6
Z0018900	DRILL AND GROUT DOWEL BARS	EACH	560	560
Z0021400	EXPANSION JOINT (SPECIAL)	FOOT	40	40
Z0029602	TEMPORARY SIGNING	EACH	8	8

FILE NAME =	USER NAME = lewisko	DESIGNED -	REVISED -
p:\planroom.dot\illinois.gov\PIDOT\Documents\IDOT Offices\District 8\Projects\DRAIN\DRAIN\CABsheets\DR76N20-sht-500.dgn		CHECKED -	REVISED -
		DATE -	REVISED -

**STATE OF ILLINOIS
DEPARTMENT OF TRANSPORTATION**

SUMMARY OF QUANTITIES

SCALE: SHEET OF SHEETS STA. TO STA.

•• VARIOUS
• DIST 8 PATCHING 2020-1

F.A. RTE.	SECTION	COUNTY	TOTAL SHEETS	SHEET NO.
••	•	VARIOUS	5	3
			CONTRACT NO. 76N20	
ILLINOIS FED. AID PROJECT				

CODE NO.	ITEM	UNIT	TOTAL QUANTITY	CONSTR. CODE
				100% STATE
				NONE
				0006
				NONE
Z0038111	PAVEMENT REMOVAL FOR PATCHING, CASE A	CU YD	120	120
Z0038112	PAVEMENT REMOVAL FOR PATCHING, CASE B	CU YD	100	100
Z0038113	PAVEMENT REMOVAL FOR PATCHING, CASE C	CU YD	60	60
Z0062454	PAVEMENT REPLACEMENT, CONCRETE SPECIAL	CU YD	12	12
Z0062455	PAVEMENT REPLACEMENT, CONCRETE	CU YD	200	200

•• VARIOUS
• DIST 8 PATCHING 2020-1

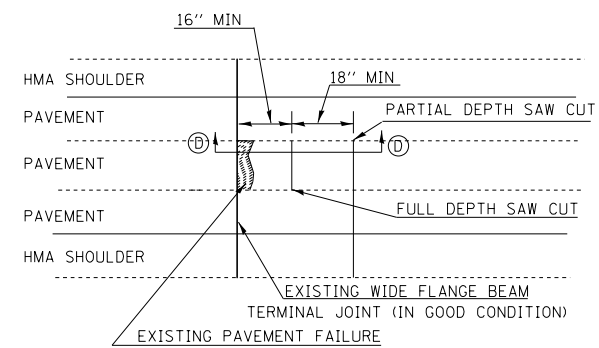
FILE NAME =	USER NAME = lewisko	DESIGNED -	REVISED -
p:\planroom.dot.illinois.gov\PWIDOT\Documents\IDOT Offices\District 8\Projects\0876N20\BRAND\CABsheets\0876N20-sht-500.dgn		CHECKED -	REVISED -
		DATE -	REVISED -

**STATE OF ILLINOIS
DEPARTMENT OF TRANSPORTATION**

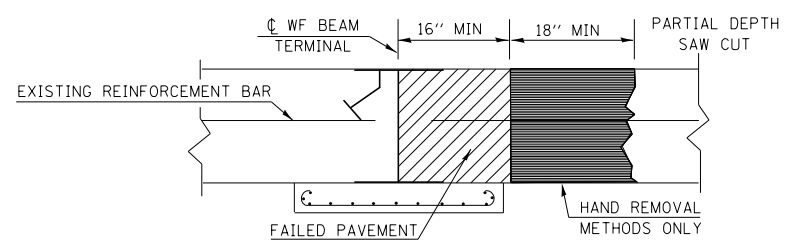
SUMMARY OF QUANTITIES

SCALE: SHEET OF SHEETS STA. TO STA.

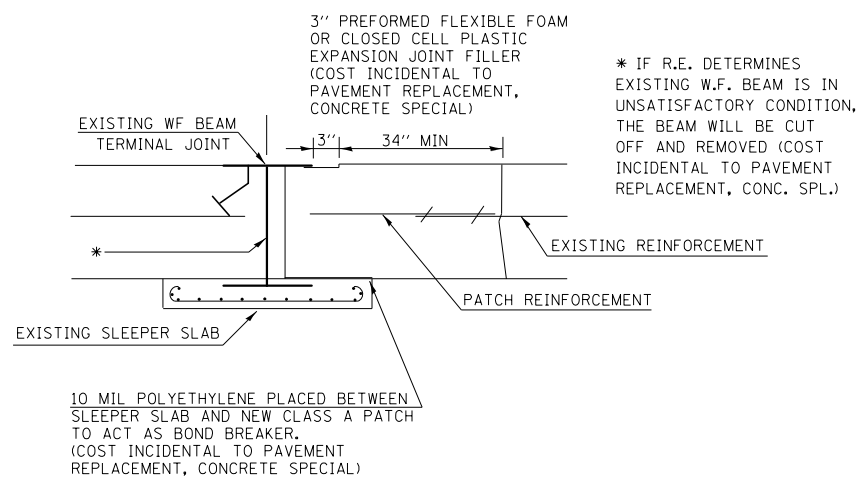
F.A. RTE.	SECTION	COUNTY	TOTAL SHEETS	SHEET NO.
••	•	VARIOUS	5	4
			CONTRACT NO. 76N20	
ILLINOIS FED. AID PROJECT				



PAVEMENT SAWING DETAIL

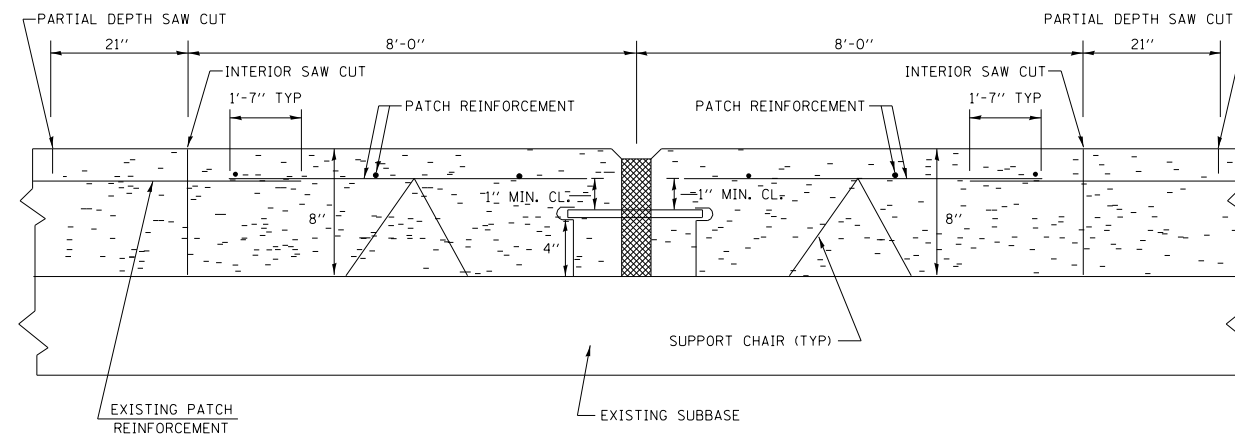


SECTION D-D

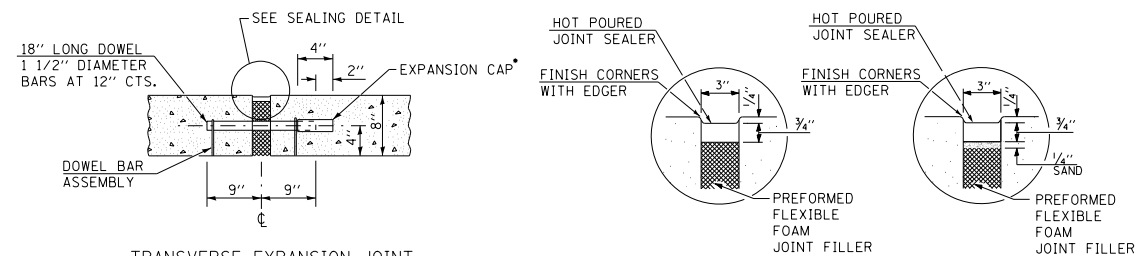


PROPOSED REPAIRS

PAVEMENT REPLACEMENT, CONCRETE



EXPANSION JOINT (SPECIAL)

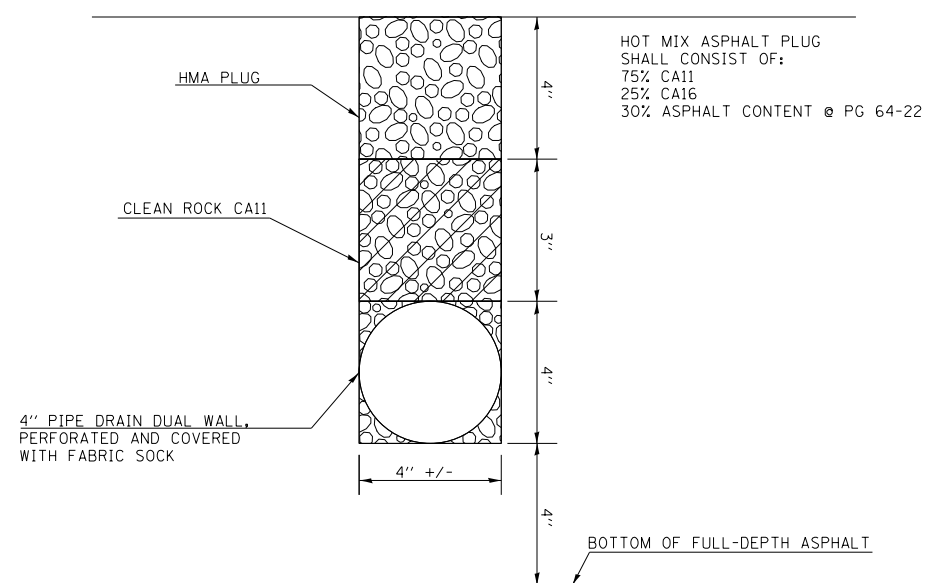


TRANSVERSE EXPANSION JOINT
(FOR PAVEMENTS WITH EQUAL THICKNESS)

SEALING DETAIL

* EXPANSION CAPS SHALL BE INSTALLED ON THE EXPOSED END OF EACH DOWEL BAR ONCE THE HEADER HAS BEEN REMOVED AND THE JOINT FILLER MATERIAL HAS BEEN INSTALLED.

EXPANSION JOINT (SPECIAL)



NOTE: THE THICKNESS OF THE MATERIAL MAY VARY DEPENDING UPON LOCATION.

PIPE DRAINS 4"
(SPECIAL)

FILE NAME =	USER NAME = lewisko	DESIGNED -	REVISED -
pw:\planroom.dot.illinois.gov\PIWIDOT\Documents\IDOT Offices\District 8\Projects\0876N20\0876N20\0876N20\CABsheets\0876N20-sht-plan.dgn		REVISION	REVISED -
	PLOT SCALE = 100.0000' / 1in.	CHECKED -	REVISED -
	PLOT DATE = 1/24/2020	DATE -	REVISED -

STATE OF ILLINOIS
DEPARTMENT OF TRANSPORTATION

DETAILS

SCALE: SHEET NO. OF SHEETS STA. TO STA.

•• VARIOUS				
• DIST 8 PATCHING 2020-1				
F.A. RTE.	SECTION	COUNTY	TOTAL SHEETS	SHEET NO.
••	•	VARIOUS	5	5
			CONTRACT NO. 76N20	
FED. ROAD DIST. NO.		ILLINOIS FED. AID PROJECT		