

124

04-24-2020 LETTING ITEM 124

STATE OF ILLINOIS
DEPARTMENT OF TRANSPORTATION
DIVISION OF HIGHWAYS

PROPOSED
HIGHWAY PLANS

VARIOUS ROUTES
SECTION D-6 HT PVMNT MRK RPR 20-29
VARIOUS COUNTIES

M-60-027-20

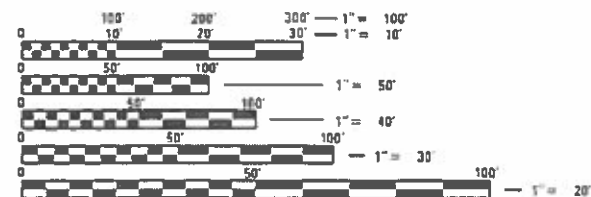
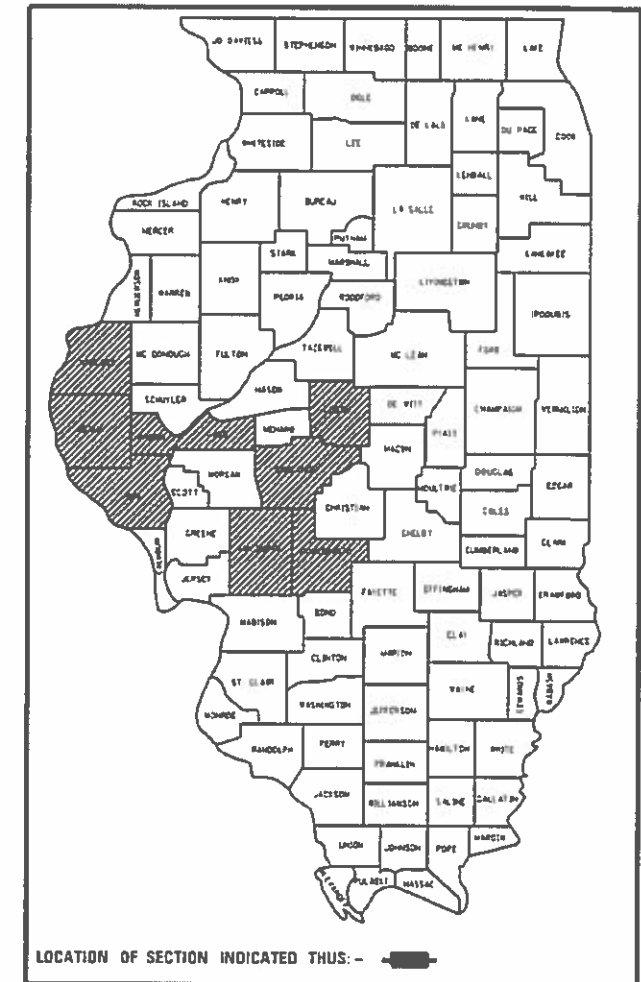
| RTE. | SECTION | COUNTY | TOTAL SHEETS | SHEET NO. |
|------|---------|----------|--------------------|-----------|
| VAR. | | VARIOUS | 5 | 1 |
| | | ILLINOIS | CONTRACT NO. 46541 | |

D-6 HT PVMNT MRK RPR 20-29

D-XX-XXX-XX

D-6

FOR INDEX OF SHEETS, SEE SHEET NO. 2



FULL SIZE PLANS HAVE BEEN PREPARED USING STANDARD ENGINEERING SCALES. REDUCED SIZED PLANS WILL NOT CONFORM TO STANDARD SCALES. IN MAKING MEASUREMENTS ON REDUCED PLANS, THE ABOVE SCALES MAY BE USED.

J.U.L.I.E.
JOINT UTILITY LOCATION INFORMATION FOR EXCAVATION
1-800-892-0123
OR 811

PROJECT ENGINEER: MIKE IRWIN 217.524.7765
PROJECT MANAGER: TIM SHARP 217.524.9160

CONTRACT NO. 46541

STATE OF ILLINOIS
DEPARTMENT OF TRANSPORTATION
DIVISION OF HIGHWAYS

SUBMITTED January 15, 2020

[Signature] REGION FOUR ENGINEER

March 20, 2020

[Signature] ENGINEER OF DESIGN AND ENVIRONMENT

March 20, 2020

[Signature] DIRECTOR OF HIGHWAYS PROJECT IMPLEMENTATION

PRINTED BY THE AUTHORITY
OF THE STATE OF ILLINOIS

INDEX OF SHEETS

- 1 COVER SHEET
- 2 INDEX OF SHEETS, STANDARDS, & SIGNATURES
- 3 SUMMARY OF QUANTITIES
- 4-5 SCHEDULE OF QUANTITIES

STANDARDS

- 701311-03 LN CLOSURE 2L2W-MOVING OP DAY ONLY
- 701400-09 APPROACH TO LANE CLOSURE-FREEWAY EXPRESSWAY
- 701406-12 LANE CLOSURE FREEWAY EXPRESSWAY-DAY OP ONLY
- 701426-09 LANE CLOSURE MULTILANE-INTERMITTANT OR MOVING OP 45 MPH OR MORE
- 701451-05 RAMP CLOSURE FREEWAY EXPRESSWAY
- 701501-06 URBAN LANE CLOSURE 2L2W-UNDIVIDED
- 701502-09 URBAN LANE CLOSURE 2L2W WITH BIDIRECT LEFT TURN LANE
- 701901-08 TRAFFIC CONTROL DEVICES

•0-6 HT PVMNT MKK RPR 20-29

| | | | | | | | | | | | |
|---|---|------------|-----------|---|----------------------|---------------------------|---------|---------|--------------|-----------|---------|
| FILE NAME = | USER NAME = sharptd | DESIGNED - | REVISED - | STATE OF ILLINOIS DEPARTMENT OF TRANSPORTATION | GENERAL NOTES | RTE. | SECTION | COUNTY | TOTAL SHEETS | SHEET NO. | |
| S:\CONTRMAINT\CAD\46541 DS HT PVMNT MKR | RPR 20-29\PLANS\46541-akt-2-gennote.dgn | DRAWN - | REVISED - | | | VAR. | * | VARIOUS | 5 | 2 | |
| | PLOT SCALE = 2.0000' / in. | CHECKED - | REVISED - | | | CONTRACT NO. 46541 | | | | | |
| Default | PLOT DATE = 12/24/2019 | DATE - | REVISED - | | | SCALE: | SHEET | OF | SHEETS | STA. | TO STA. |

| CODE NO. | ITEM | UNIT | TOTAL QUANTITY | VARIOUS COUNTIES | | | | | | | | | | |
|----------|-----------------------|-------|----------------|-------------------------------|-------------------------------|------------------------------|---------------------------------|-------------------------------|----------------------------------|------------------------------------|------------------------------|----------------------------------|------|------|
| | | | | 100% STATE ADAMS ROADWAY 0021 | 100% STATE BROWN ROADWAY 0021 | 100% STATE CASS ROADWAY 0021 | 100% STATE HANCOCK ROADWAY 0021 | 100% STATE LOGAN ROADWAY 0021 | 100% STATE MACOUPIN ROADWAY 0021 | 100% STATE MONTGOMERY ROADWAY 0021 | 100% STATE PIKE ROADWAY 0021 | 100% STATE SANGAMON ROADWAY 0021 | | |
| | | | | 70200100 | NIGHTTIME WORK ZONE LIGHTING | L SUM | 1 | 0.11 | 0.11 | 0.11 | 0.11 | 0.11 | 0.11 | 0.11 |
| 78000100 | THPL PVT MK LTR & SYM | SQ FT | 5227 | 0 | 702 | 515 | 0 | 239 | 515 | 372 | 125 | 2759 | | |
| 78000400 | THPL PVT MK LINE 6 | FOOT | 35680 | 26000 | 450 | 200 | 2000 | 1100 | 680 | 0 | 0 | 5250 | | |
| 78000500 | THPL PVT MK LINE 8 | FOOT | 6900 | 2000 | 350 | 1200 | 800 | 0 | 0 | 850 | 0 | 1700 | | |
| 78000600 | THPL PVT MK LINE 12 | FOOT | 8180 | 700 | 220 | 1600 | 2860 | 800 | 1000 | 200 | 0 | 800 | | |
| 78000650 | THPL PVT MK LINE 24 | FOOT | 6550 | 2500 | 240 | 500 | 530 | 140 | 100 | 360 | 0 | 2180 | | |
| 78009000 | MOD URETH PM LTR-SYM | FOOT | 125 | 0 | 0 | 0 | 0 | 0 | 0 | 0 | 125 | 0 | | |
| 78009005 | MOD URETH PM LINE 5 | FOOT | 2295400 | 409000 | 0 | 0 | 240000 | 186800 | 294800 | 96400 | 458900 | 609500 | | |
| 78009006 | MOD URETH PM LINE 6 | FOOT | 40760 | 9500 | 0 | 0 | 9700 | 3600 | 1000 | 1000 | 1260 | 14700 | | |
| 78009008 | MOD URETH PM LINE 8 | FOOT | 54170 | 11300 | 0 | 0 | 2700 | 170 | 6400 | 4700 | 3900 | 25000 | | |
| 78009012 | MOD URETH PM LINE 12 | FOOT | 3540 | 2000 | 0 | 0 | 1200 | 300 | 0 | 0 | 40 | 0 | | |
| 78009024 | MOD URETH PM LINE 24 | FOOT | 890 | 450 | 0 | 0 | 350 | 0 | 0 | 0 | 90 | 0 | | |
| X0327979 | PAVMT MRKG REM GRIND | SQ FT | 10400 | 0 | 0 | 0 | 0 | 0 | 0 | 0 | 0 | 10400 | | |
| X7800825 | HS THPL PM LN 5 | FOOT | 448750 | 91000 | 16300 | 81350 | 74000 | 19800 | 23950 | 38750 | 0 | 103600 | | |
| X7800835 | HS THPL PM LN 6 | FOOT | 25450 | 0 | 1700 | 3450 | 0 | 1550 | 1150 | 1450 | 0 | 16150 | | |
| X7800845 | HS THPL PM LN 8 | FOOT | 500 | 0 | 0 | 500 | 0 | 0 | 0 | 0 | 0 | 0 | | |

*0-6 HT PVMNT MRK RPR 20-29

| | | | |
|---------------------------------------|-------------------------------------|------------|-----------|
| FILE NAME = | USER NAME = sharptd | DESIGNED - | REVISED - |
| S:\CONTRACT\CA0146541 DS HT PVMNT MRK | RPR 20-29\PLANS\46541-shc-3-500.dgn | DRAWN - | REVISED - |
| | PLOT SCALE = 2.0000' / 1" | CHECKED - | REVISED - |
| Default | PLOT DATE = 12/24/2019 | DATE - | REVISED - |

STATE OF ILLINOIS
DEPARTMENT OF TRANSPORTATION

SUMMARY OF QUANTITIES

SCALE: SHEET OF SHEETS STA. TO STA.

| RTE. | SECTION | COUNTY | TOTAL SHEETS | SHEET NO. |
|---------------------------|---------|---------|--------------------|-----------|
| VAR. | * | VARIOUS | 5 | 3 |
| | | | CONTRACT NO. 46541 | |
| ILLINOIS FED. AID PROJECT | | | | |

| ADAMS COUNTY | | | |
|--------------------------------|--------|-------------|-------------|
| I-172 / IL 336 | | | |
| I-172 MP 10.42 - IL 336 MP 6.5 | | | |
| M. URETH | | | |
| | COLOR | LENGTH (LF) | DESCRIPTION |
| 5" | WHITE | 225,000 | EDGE |
| | YELLOW | 184,000 | EDGE |
| | TOTAL | 409000 | |
| 6" | WHITE | 9,500 | M. SKIPS |
| 8" | WHITE | 11,300 | GORES/ISL |
| 12" | WHITE | 2,000 | ISL/CHEV |
| 24" | WHITE | 450 | STOP BARS |

| ADAMS COUNTY | | | |
|---------------------------|--------|-------------|----------------|
| IL-104 BROADWAY | | | |
| 54th STREET to 3RD STREET | | | |
| H.S. THERMO | | | |
| | COLOR | LENGTH (LF) | DESCRIPTION |
| 5" | WHITE | 21,000 | CTR LINE SKIPS |
| | YELLOW | 70,000 | CENTER LINE |
| | TOTAL | 91000 | |

| THERMO | | | |
|--------|-------|-------------|----------------|
| | COLOR | LENGTH (LF) | DESCRIPTION |
| 6" | WHITE | 26,000 | STORAGE/X-WALK |
| 8" | WHITE | 2,000 | ISL |
| 12" | WHITE | 700 | ISL |
| 24" | WHITE | 2,500 | S. BARS |

| BROWN COUNTY | | | |
|---------------------------------------|--------|-------------|-------------------|
| US 24 / IL 99 / IL 107 (MT. STERLING) | | | |
| US 24 MP 9.75 to MP 9.00 | | | |
| IL 99 MP 12.50 to Jct. IL 99/US 24 | | | |
| IL 107 Jct. IL 107/IL 99 | | | |
| H.S. THERMO | | | |
| | COLOR | LENGTH (LF) | DESCRIPTION |
| 5" | YELLOW | 13,700 | CENTER LINE |
| | YELLOW | 2,600 | CENTER LINE SKIPS |
| | TOTAL | 16300 | |
| 6" | WHITE | 1,300 | STORAGE |
| | WHITE | 400 | M. SKIPS |
| | TOTAL | 1700 | |

| THERMO | | | |
|--------|--------|--------------------|---------------|
| | COLOR | LENGTH (LF) | DESCRIPTION |
| 6" | WHITE | 450 | X-WALK LADDER |
| 8" | WHITE | 350 | ISL |
| 12" | WHITE | 80 | X-WALK LADDER |
| | WHITE | 60 | ISL |
| | YELLOW | 80 | CHEV |
| | TOTAL | 570 | |
| 24" | WHITE | 240 | S. BARS |
| L & S | WHITE | 45 (15.6)=702.0 SF | TURN ARROW |

| CASS COUNTY | | | |
|---------------------------------|--------|-------------|-------------|
| IL 125 (BEARDSTOWN) | | | |
| E. ABUT. RIVER BRIDGE - MP-2.55 | | | |
| H.S. THERMO | | | |
| | COLOR | LENGTH (LF) | DESCRIPTION |
| 5" | YELLOW | 45,950 | CENTER LINE |
| | WHITE | 35,400 | EDGE |
| | TOTAL | 81350 | |
| 6" | WHITE | 2,700 | STORAGE |
| | WHITE | 750 | M. SKIPS |
| | TOTAL | 3450 | |
| 8" | WHITE | 500 | GORE |

| THERMO | | | |
|--------|--------|-------------------|-------------|
| | COLOR | LENGTH (LF) | DESCRIPTION |
| 6" | WHITE | 200 | X-WALK |
| 8" | WHITE | 1,200 | ISL |
| 12" | YELLOW | 800 | CHEV. |
| | WHITE | 800 | ISL |
| | TOTAL | 1600 | |
| 24" | WHITE | 500 | S. BARS |
| L & S | WHITE | 33 (15.6) = 514.8 | TURN ARROW |

| HANCOCK COUNTY | | | |
|--------------------|--------|-------------|-------------|
| US 136 (HAMILTON) | | | |
| MP-0.00 to MP-3.00 | | | |
| HOT SPRAY | | | |
| | COLOR | LENGTH (LF) | DESCRIPTION |
| 5" | YELLOW | 43,000 | CENTER LINE |
| | WHITE | 31,000 | CENTER LINE |
| | TOTAL | 74000 | |
| 6" | WHITE | 2,000 | X-WALK |
| | TOTAL | 2000 | |
| 8" | WHITE | 800 | ISL |
| 12" | WHITE | 2,400 | CHEV/ISL |
| | YELLOW | 460 | CHEV |
| | TOTAL | 2,860 | |
| 24" | WHITE | 530 | S. BARS |

| HANCOCK COUNTY | | | |
|---------------------------------------|--------|-------------|-------------|
| IL 336/US 136 | | | |
| BJ 1/2 MI. of CARTHAGE INTERCHANGE to | | | |
| HANCOCK/MCDONOUGH COUNTY LINE | | | |
| M. URETH | | | |
| | COLOR | LENGTH (LF) | DESCRIPTION |
| 5" | YELLOW | 112,000 | EDGE |
| | WHITE | 138,000 | EDGE |
| | TOTAL | 250000 | |
| 6" | WHITE | 8,900 | STORAGE |
| | WHITE | 800 | M. SKIPS |
| | TOTAL | 800 | |
| 8" | WHITE | 2,700 | ISLANDS |
| 12" | WHITE | 1,200 | ISLANDS |
| 24" | WHITE | 350 | S. BARS |

| LOGAN COUNTY | | | |
|--|--------|-------------|-------------------|
| BUSINESS 55 (LINCOLN) | | | |
| MP-9.51 to MP-3.52 | | | |
| BJ 1.38 MI. N. of I-55 to BJ 400' N. of WOODLAWN | | | |
| M. URETH | | | |
| | COLOR | LENGTH (LF) | DESCRIPTION |
| 5" | YELLOW | 65,700 | EDGE |
| | YELLOW | 5,500 | CENTER LINE |
| | WHITE | 65,700 | EDGE |
| | WHITE | 15,500 | CENTER LINE SKIPS |
| | TOTAL | 152400 | |
| 6" | WHITE | 3,000 | STORAGE |
| | WHITE | 600 | M. SKIPS |
| | TOTAL | 3600 | |
| 8" | WHITE | 170 | GORES |
| 12" | YELLOW | 300 | CHEV |

| LOGAN COUNTY | | | |
|--------------------|--------|-------------|-------------------|
| BUSINESS 55 | | | |
| MP-2.55 to MP-1.56 | | | |
| M. URETH | | | |
| | COLOR | LENGTH (LF) | DESCRIPTION |
| 5" | YELLOW | 21,100 | CENTER LINE |
| | WHITE | 10,600 | EDGE |
| | WHITE | 2,700 | CENTER LINE SKIPS |
| | TOTAL | 34400 | |

| LOGAN COUNTY | | | |
|--|-------|-------------|-------------|
| IL 10 / IL 121 | | | |
| START of 4-LANE (W. of I-55) to | | | |
| END of 4-LANE (E. of IL 10/IL 121 JCT. EAST) | | | |
| HOT SPRAY | | | |
| | COLOR | LENGTH (LF) | DESCRIPTION |
| 5" | WHITE | 9,500 | SKIPS |

| LOGAN COUNTY | | | |
|---------------------|--------|-------------|-------------------|
| IL 121 (LINCOLN) | | | |
| KICKAPOO to PULASKI | | | |
| H.S. THERMO | | | |
| | COLOR | LENGTH (LF) | DESCRIPTION |
| 5" | YELLOW | 9,600 | CENTER LINE |
| | YELLOW | 700 | CENTER LINE SKIPS |
| | TOTAL | 10300 | |
| 6" | WHITE | 1,100 | STORAGE |
| | WHITE | 450 | M. SKIPS |
| | TOTAL | 1550 | |

| THERMO | | | |
|--------|--------|-------------------|---------------|
| | COLOR | LENGTH (LF) | DESCRIPTION |
| 6" | WHITE | 1,100 | X-WALK |
| 12" | WHITE | 500 | X-WALK |
| | WHITE | 100 | CHEV |
| | YELLOW | 200 | CHEV |
| | TOTAL | 800 | |
| 24" | WHITE | 140 | S. BAR |
| L&S | WHITE | 10(15.6)=156.0 SF | TURN ARROW |
| L&S | WHITE | 2(41.5)=83.0 SF | LN. DROP ARR. |

| MACOUPIN COUNTY | | | |
|--|--------|-------------|-------------------|
| IL 4: SHAD RD. (2100 N.) to N. SIDE OF TOWN SQUARE | | | |
| H.S. THERMO | | | |
| | COLOR | LENGTH (LF) | DESCRIPTION |
| 5" | YELLOW | 11,500 | CENTER LINE |
| | YELLOW | 1,050 | CENTER LINE SKIPS |
| | WHITE | 11,400 | EDGE |
| | TOTAL | 23950 | |
| *STRIPE THROUGH R X R UNDERPASS* | | | |
| 6" | WHITE | 900 | X-WALK LADDER |
| | WHITE | 250 | CHEV. |
| | TOTAL | 1150 | |

| THERMO | | | |
|--------|--------|-------------|----------------|
| | COLOR | LENGTH (LF) | DESCRIPTION |
| 6" | WHITE | 680 | X-WALKS/LADDER |
| 12" | WHITE | 400 | X-WALKS/LADDER |
| | YELLOW | 600 | CHEV. |
| | TOTAL | 1000 | |
| 24" | WHITE | 100 | S. BARS |
| L&S | WHITE | 33 | TURN ARROW |

DO NOT ATTEMPT X-WALKS & S. BARS @ TOWN SQUARE (BRICK)

| MACOUPIN COUNTY | | | |
|---|--------|-------------|--------------|
| I-55 | | | |
| MP 50.40 to MP 39.05 | | | |
| MONTGOMERY/MACOUPIN to MACOUPIN/MADISON | | | |
| M. URETH | | | |
| | COLOR | LENGTH (LF) | DESCRIPTION |
| 5" | YELLOW | 120,400 | EDGE |
| | YELLOW | 11,600 | EDGE (RAMPS) |
| | WHITE | 30,200 | SKIPS |
| | WHITE | 113,100 | EDGE |
| | WHITE | 19,500 | EDGE (RAMPS) |
| | TOTAL | 294800 | |
| 6" | WHITE | 1,000 | M. SKIPS |
| 8" | WHITE | 6,400 | GORES |

*D-6 HT PYMNT MRK RPR 20-29

FILE NAME = S:\CONTRMINT\CAD\48541 DB HT PYMNT HR
 USER NAME = sharptd
 APR 20 2019 PLANS\48541-shs-4-Locations.dgn
 PLOT SCALE = 2.0000 ' / in.
 PLOT DATE = 12/24/2019

DESIGNED -
 DRAWN -
 CHECKED -
 DATE -
 REVISED -
 REVISED -
 REVISED -
 REVISED -

STATE OF ILLINOIS
 DEPARTMENT OF TRANSPORTATION

SCHEDULE OF QUANTITIES

SCALE: SHEET OF SHEETS STA. TO STA.

| ROUTE | SECTION | COUNTY | TOTAL SHEETS | SHEET NO. |
|---------------------------|---------|---------|--------------|-----------|
| VAR. | * | VARIOUS | 5 | 4 |
| CONTRACT NO. 46541 | | | | |
| ILLINOIS FED. AID PROJECT | | | | |

| MONTGOMERY COUNTY | | | |
|--------------------------------------|--------|-------------|-------------|
| I-55 | | | |
| MP 53.37 to MP 50.40 | | | |
| BJ MI. N. of EXIT #52 to COUNTY LINE | | | |
| M. URETH | | | |
| | COLOR | LENGTH (LF) | DESCRIPTION |
| 5" | WHITE | 45,200 | EDGE |
| | WHITE | 7,900 | SKIPS |
| | YELLOW | 43,300 | EDGE |
| | TOTAL | 96400 | |
| 6" | WHITE | 1,000 | M. SKIPS |
| 8" | WHITE | 4,700 | GORES |

| MONTGOMERY COUNTY | | | |
|-------------------------------------|--------|-------------|-------------------|
| ROUTE 66 N & S of IL16 (LITCHFIELD) | | | |
| (BIT. SECTION ONLY) | | | |
| H.S. THERMO | | | |
| | COLOR | LENGTH (LF) | DESCRIPTION |
| 5" | YELLOW | 17,000 | EDGE |
| | YELLOW | 1,450 | CENTER LINE |
| | WHITE | 17,000 | EDGE |
| | WHITE | 3,300 | CENTER LINE SKIPS |
| | TOTAL | 38,750 | |
| 6" | WHITE | 1,100 | STORAGE |
| | WHITE | 350 | M. SKIPS |
| | TOTAL | 40200 | |

| THERMO | | | |
|--------|-------|--------------------|----------------|
| | COLOR | LENGTH (LF) | DESCRIPTION |
| 8" | WHITE | 850 | GORES/ISL |
| 12" | WHITE | 200 | GORES/ISL |
| 24" | WHITE | 360 | S. BARS |
| L&S | WHITE | 16 (15.6)=249.6 SF | TURN ARROW |
| | WHITE | 2 (61.4)=122.8 SF | R X R CROSSING |

| SANGAMON COUNTY | | | |
|------------------|--------|----------------------|----------------|
| I-72 to STANFORD | | | |
| H.S. THERMO | | | |
| | COLOR | LENGTH (LF) | DESCRIPTION |
| 5" | WHITE | 18,500 | EDGE |
| | YELLOW | 17,800 | EDGE |
| | TOTAL | 36300 | |
| 6" | WHITE | 3,800 | STORAGE |
| | WHITE | 2,300 | GORES |
| | WHITE | 1,400 | M. SKIPS |
| | TOTAL | 7500 | |
| THERMO | | | |
| | COLOR | LENGTH (LF) | DESCRIPTION |
| 6" | WHITE | 700 | X-WALK |
| 24" | WHITE | 1,000 | S. BAR |
| L&S | WHITE | 68 (15.6)=1,060.8 SF | TURN ARROW |
| L&S | WHITE | 12 (11.5)=138.0 SF | STRAIGHT ARROW |

| PIKE COUNTY | | | |
|----------------------|--------|------------------|-------------------|
| I-72 | | | |
| MP 29.35 to MP 11.17 | | | |
| M. URETH | | | |
| | COLOR | LENGTH (LF) | DESCRIPTION |
| 5" | WHITE | 200,600 | EDGE |
| | WHITE | 48,400 | CENTER LINE SKIPS |
| | YELLOW | 197,700 | EDGE |
| | TOTAL | 446700 | |
| 6" | WHITE | 700 | M. SKIPS |
| 8" | WHITE | 3,700 | GORES |
| | WHITE | 800 | ISLAND |
| | TOTAL | 4500 | |
| 12" | WHITE | 40 | ISL |
| 24" | WHITE | 90 | S. BARS |
| L&S | WHITE | 4 (15.6)=62.4 SF | TURN ARROW |

| PIKE COUNTY | | | |
|-----------------|--------|------------------|-------------|
| I-72 | | | |
| OVHD @ EXIT #20 | | | |
| M. URETH | | | |
| | COLOR | LENGTH (LF) | DESCRIPTION |
| 5" | YELLOW | 6,100 | CENTER LINE |
| | WHITE | 6,100 | EDGE |
| | TOTAL | 12200 | |
| 6" | WHITE | 400 | STORAGE |
| | WHITE | 160 | M. SKIPS |
| | TOTAL | 560 | |
| L&S | WHITE | 4 (15.6)=62.4 SF | TURN ARROW |

| SANGAMON COUNTY | | | |
|--------------------------------|--------|-------------|-------------------|
| IL 4 - BJ SCHOOL to MARIO'S BJ | | | |
| HOT SPRAY | | | |
| | COLOR | LENGTH (LF) | DESCRIPTION |
| 5" | WHITE | 20,000 | EDGE |
| | YELLOW | 20,800 | CENTER LINE |
| | YELLOW | 1,600 | CENTER LINE SKIPS |
| | TOTAL | 42400 | |
| 6" | WHITE | 4,200 | STORAGE |
| | WHITE | 850 | M. SKIPS |
| | TOTAL | 5050 | |

| SANGAMON COUNTY | | | |
|--|--------|-------------|-------------------|
| IL 4 - BJ MARIO'S to BJ N. of GREENBRIAR | | | |
| M. URETH | | | |
| | COLOR | LENGTH (LF) | DESCRIPTION |
| 5" | WHITE | 57,000 | EDGE |
| | YELLOW | 57,000 | EDGE |
| | WHITE | 14,500 | CENTER LINE SKIPS |
| | WHITE | 19,300 | EDGE |
| | YELLOW | 17,800 | EDGE |
| | TOTAL | 165600 | |
| 6" | WHITE | 8,700 | STORAGE |
| | WHITE | 2,200 | M. SKIPS |
| | TOTAL | 10900 | |
| 8" | WHITE | 8,000 | GORES |

| SANGAMON COUNTY | | | |
|--|--------|-------------|-------------------|
| IL 29 - SPFLD. To ROCHESTER | | | |
| BJ 350' E. of DIRKSEN PKWY to X-OVER W. of ROCHESTER | | | |
| M. URETH | | | |
| | COLOR | LENGTH (LF) | DESCRIPTION |
| 5" | YELLOW | 38,000 | EDGE |
| | WHITE | 38,000 | EDGE |
| | WHITE | 9,500 | CENTER LINE SKIPS |
| | TOTAL | 85500 | |

| SANGAMON COUNTY | | | |
|--|--------|-------------|-------------------|
| I-55 | | | |
| BJ N. of CLEAR LAKE to BJ SANGAMON/LOGAN COUNTY LINE | | | |
| M. URETH | | | |
| | COLOR | LENGTH (LF) | DESCRIPTION |
| 5" | WHITE | 162,800 | EDGE |
| | WHITE | 34,800 | CENTER LINE SKIPS |
| | YELLOW | 160,800 | EDGE |
| | TOTAL | 358400 | |
| 6" | WHITE | 3,800 | M. SKIPS |
| 8" | WHITE | 17,000 | GORES |
| REM | | 1,900 SF | M. SKIPS |
| REM | | 8,500 SF | GORES |

| HANCOCK COUNTY | | | |
|--------------------|--------|-------------|-------------|
| US 136 (HAMILTON) | | | |
| MP-0.00 to MP-3.00 | | | |
| HOT SPRAY | | | |
| | COLOR | LENGTH (LF) | DESCRIPTION |
| 5" | YELLOW | 43,000 | CENTER LINE |
| | WHITE | 31,000 | CENTER LINE |
| | TOTAL | 74000 | |
| 6" | WHITE | 2,000 | X-WALK |
| | TOTAL | 2000 | |
| 8" | WHITE | 800 | ISL |
| 12" | WHITE | 2,400 | CHEV/ISL |
| | YELLOW | 460 | CHEV |
| | TOTAL | 2,860 | |
| 24" | WHITE | 530 | S. BARS |

| HANCOCK COUNTY | | | |
|---------------------------------------|--------|-------------|-------------|
| IL 336/US 136 | | | |
| BJ 1/2 MI. of CARTHAGE INTERCHANGE to | | | |
| HANCOCK/MCDONOUGH COUNTY LINE | | | |
| M. URETH | | | |
| | COLOR | LENGTH (LF) | DESCRIPTION |
| 5" | YELLOW | 112,000 | EDGE |
| | WHITE | 138,000 | EDGE |
| | TOTAL | 250000 | |
| 6" | WHITE | 8,900 | STORAGE |
| | WHITE | 800 | M. SKIPS |
| | TOTAL | 800 | |
| 8" | WHITE | 2,700 | ISLANDS |
| 12" | WHITE | 1,200 | ISLANDS |
| 24" | WHITE | 350 | S. BARS |

*D-6 HT PVMNT MKR RPR 20-29

| | | | |
|--|---|------------|-----------|
| FILE NAME = | USER NAME = sherptd | DESIGNED - | REVISED - |
| S:\CDTRMAINT_CAD\46541 06 HT PVMNT MKR | RPR 20-29\PLANS\46541-shr-4-Locations.dgn | DRAWN - | REVISED - |
| Default | PLOT SCALE = 2.0000 ' / in. | CHECKED - | REVISED - |
| | PLOT DATE = 12/24/2019 | DATE - | REVISED - |

STATE OF ILLINOIS
DEPARTMENT OF TRANSPORTATION

SCHEDULE OF QUANTITIES

| | | | | | | |
|--------|-------|----|--------|------|----|------|
| SCALE: | SHEET | OF | SHEETS | STA. | TO | STA. |
|--------|-------|----|--------|------|----|------|

| RT. | SECTION | COUNTY | TOTAL SHEETS | SHEET NO. |
|---------------------------|---------|---------|--------------------|-----------|
| VAR. | | VARIOUS | 5 | 5 |
| | | | CONTRACT NO. 46541 | |
| ILLINOIS FED. AID PROJECT | | | | |