

133

04-24-2020 LETTING ITEM 133

STATE OF ILLINOIS
DEPARTMENT OF TRANSPORTATION

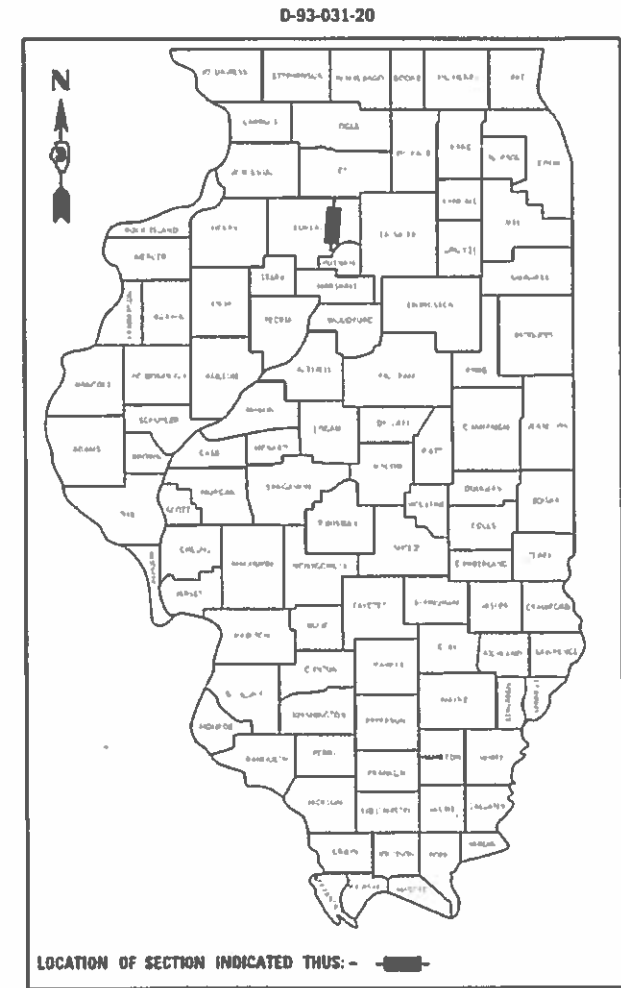
F.A.I. SITE	SECTION	COUNTY	TOTAL SHEETS	SHEET NO
180	106-11SCR	BUREAU	7	1
		BLINDS	CONTRACT NO. 66K92	

- INDEX OF SHEETS**
1. COVER SHEET
 2. GENERAL NOTES
 3. SUMMARY OF QUANTITIES
 4. TYPICAL SECTION
 5. GENERAL PLAN
 - 6 - 7. PHOTOS

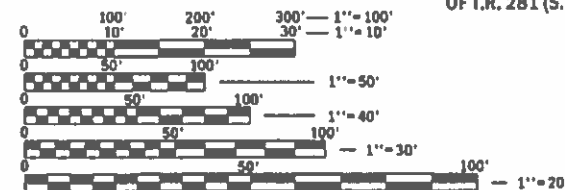
- STANDARDS**
- 000001-07 STANDARD SYMBOLS, ABBREVIATIONS, AND PATTERNS
 - 001006 DECIMAL OF AN INCH AND OF A FOOT
 - 701101-05 OFF-ROAD OPERATIONS, MULTILANE, 15' (4.5 m) TO 24' (600mm) FROM PAVEMENT EDGE
 - 701106-07 OFF-RD OPERATIONS, MULTILANE, MORE THAN 15' (4.5m) AWAY
 - 701400-09 APPROACH TO LANE CLOSURE, FREEWAY/EXPRESSWAY
 - 701406-12 LANE CLOSURE, FREEWAY/EXPRESSWAY, DAY OPERATIONS ONLY
 - 701428-01 TRAFFIC CONTROL SETUP AND REMOVAL FREEWAY/EXPRESSWAY
 - 701901-08 TRAFFIC CONTROL DEVICES

**PROPOSED
HIGHWAY PLANS**

F.A.I. ROUTE 180 (I-180)
(06-1)SCR
SCOUR MITIGATION/RIPRAP REPLACEMENT
BUREAU COUNTY
C-93-070-20



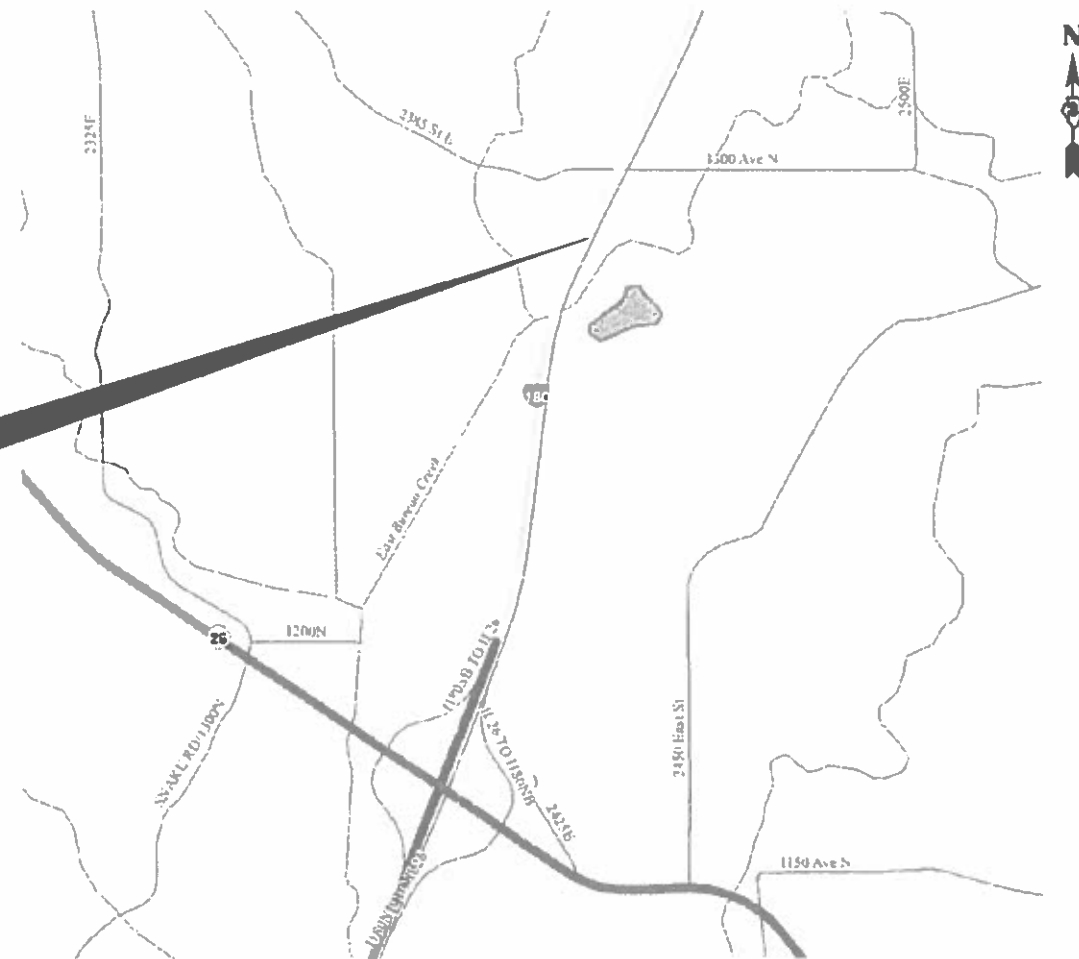
PROJECT LOCATION
NB I-180 ±0.2 MILES SOUTH
OF T.R. 281 (S.N. 006-0126)



FULL SIZE PLANS HAVE BEEN PREPARED USING STANDARD ENGINEERING SCALES. REDUCED SIZED PLANS WILL NOT CONFORM TO STANDARD SCALES. IN MAKING MEASUREMENTS ON REDUCED PLANS, THE ABOVE SCALES MAY BE USED.

J.U.L.I.E.
JOINT UTILITY LOCATION INFORMATION FOR EXCAVATORS
1-800-892-0123
OR 811

PROJECT ENGINEER: JOE KANNEL, P.E.
UNIT CHIEF: RON WOODSHANK
D3 PHONE NUMBER: (815) 434-6131
CONTRACT NO. 66K92



GROSS LENGTH = 150 FT. = 0.0002 MILE
NET LENGTH = 150 FT. = 0.0002 MILE

FUNCTIONAL CLASSIFICATION
RURAL-INTERSTATE
F.A.I. ROUTE 180 (I-180)
2017 ADT = 2650
P.V. 61.5% S.U. 6.4% M.U. 32.1%

STATE OF ILLINOIS
DEPARTMENT OF TRANSPORTATION

SUBMITTED Feb 20, 2020
[Signature] REGIONAL ENGINEER
[Signature] ENGINEER OF DESIGN AND ENVIRONMENT
[Signature] DIRECTOR OF HIGHWAYS PROJECT IMPLEMENTATION

PRINTED BY THE AUTHORITY
OF THE STATE OF ILLINOIS

GENERAL NOTES

FOR STABILIZATION, ALL TYPE III BARRICADES WILL REQUIRE A MINIMUM OF FOUR SAND BAGS PER BARRICADE.

ALL EXCAVATED MATERIAL, WHICH INCLUDES DIGGING OR GRADING OF ANY SOIL OR FILL MATERIAL, WITH THE EXCEPTION OF AGGREGATE FILLS, MUST BE INCORPORATED WITHIN THE IDOT RIGHT OF WAY DUE TO ENVIRONMENTAL DOCUMENTATION REQUIREMENTS.

ABANDONED UNDERGROUND UTILITIES THAT CONFLICT WITH CONSTRUCTION SHALL BE DISPOSED OF OUTSIDE THE LIMITS OF THE RIGHT OF WAY ACCORDING TO ARTICLE 202.03 OF THE STANDARD SPECIFICATIONS AND AS DIRECTED BY THE ENGINEER. THIS WORK WILL NOT BE PAID FOR SEPARATELY, BUT WILL BE INCLUDED IN THE COST OF EARTH EXCAVATION.

ANY REFERENCE TO A STANDARD IN THESE PLANS SHALL BE INTERPRETED TO MEAN THE EDITION AS INDICATED BY THE SUBNUMBER SHOWN IN THE LIST OF STANDARDS OR THE COPY INCLUDED IN THESE PLANS.

STONE DUMPED RIP-RAP	1.35	TONS / CU YD
STONE DUMPED RIP-RAP	0.0375	TONS / SQ YD / IN

COMMITMENTS

STATE OF ILLINOIS
DEPARTMENT OF TRANSPORTATION
DISTRICT THREE
AS BUILT INFORMATION

SUPERVISING CONSTRUCTION FIELD ENGINEER

RESIDENT ENGINEER / TECHNICIAN

START & END DATES
OF CONSTRUCTION:

INSPECTORS:

STATE OF ILLINOIS
DEPARTMENT OF TRANSPORTATION
DISTRICT THREE

PREPARED BY: Tom Benoit
DISTRICT STUDIES & PLANS ENGINEER

DATE: Feb 21, 2020

EXAMINED BY: Hyun W. Lee
DISTRICT CONSTRUCTION ENGINEER

Michael J. Riedel
DISTRICT MATERIALS ENGINEER

Tom Howard
DISTRICT OPERATIONS ENGINEER

STATE OF ILLINOIS
DEPARTMENT OF TRANSPORTATION

GENERAL NOTES

SCALE _____ SHEET 1 OF 1 SHEETS STA. _____ TO STA. _____

F.A.I. RTE.	SECTION	COUNTY	TOTAL SHEETS	SHEET NO.
180	(06-1)SCR	BUREAU	7	2
CONTRACT NO. 66K92				
ILLINOIS FED. AID PROJECT				

MODEL: Default
 FILE: \\nrcs-pub\pub\rooms\dat\illinois.gov\PI\DOT\Documents\DOT_Offices\District_3\Projects\ID366K92\CADD\table\ID366K92-sht-cover.dgn

CODE NO.	ITEM	UNIT	TOTAL QUANTITY	CONSTRUCTION CODE
				CONTRACT MAINTENANCE
				100% STATE ROADWAY
				0020 RURAL
28100809	STONE DUMPED RIPRAP, CLASS A5	TON	800	800
67100100	MOBILIZATION	L SUM	1	1
70100700	TRAFFIC CONTROL AND PROTECTION, STANDARD 701406	L SUM	1	1
70107025	CHANGEABLE MESSAGE SIGN	CAL DA	7	7

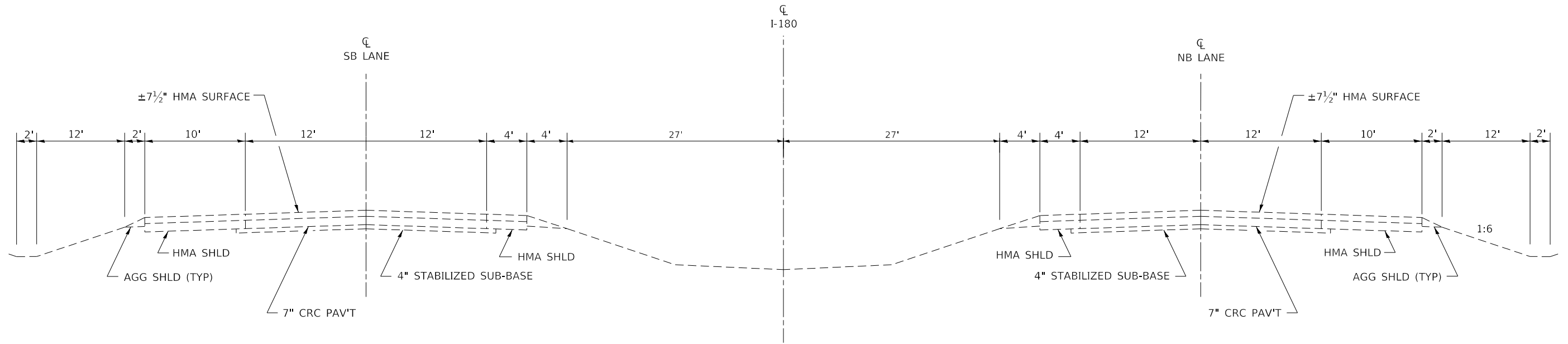
USER NAME = MARINIEJ	DESIGNED - EM	REVISED - _____
	DRAWN - EM	REVISED - _____
PLOT SCALE = 3.9370' / mm	CHECKED - RW	REVISED - _____
PLOT DATE = 2/20/2020	DATE - 2/20/2020	REVISED - _____

**STATE OF ILLINOIS
 DEPARTMENT OF TRANSPORTATION**

SUMMARY OF QUANTITIES

SCALE: _____ SHEET 1 OF 1 SHEETS STA. _____ TO STA. _____

F.A.I. RTE.	SECTION	COUNTY	TOTAL SHEETS	SHEET NO.
180	(06-1)SCR	BUREAU	7	3
			CONTRACT NO. 66K92	
		ILLINOIS	FED. AID PROJECT	



**TYPICAL SECTION
I-180**

MODEL: Default
 FILE: Model: ProjectRoom.dwg
 PROJECT: I-180
 DRAWING: I-180-TYPICAL SECTION
 DATE: 2/24/2020

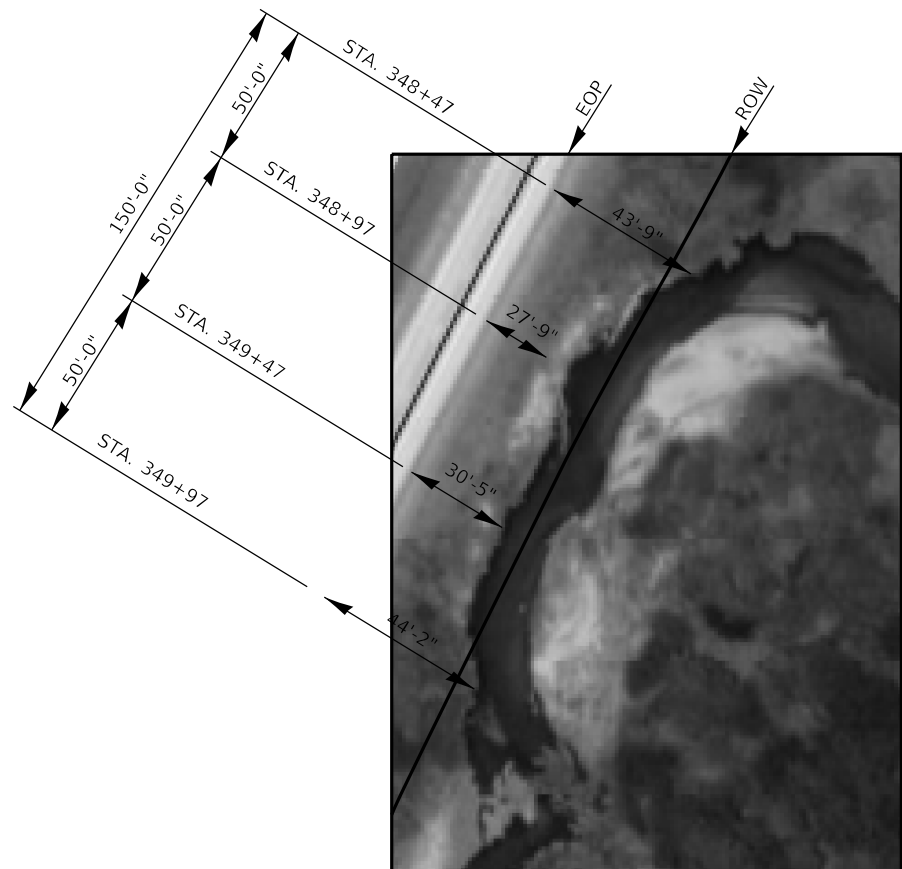
USER NAME = MARINIEJ	DESIGNED - EM	REVISED - _____
	DRAWN - EM	REVISED - _____
PLOT SCALE = 3.9370' / mm	CHECKED - RW	REVISED - _____
PLOT DATE = 2/24/2020	DATE - 2/24/2020	REVISED - _____

**STATE OF ILLINOIS
DEPARTMENT OF TRANSPORTATION**

TYPICAL SECTION

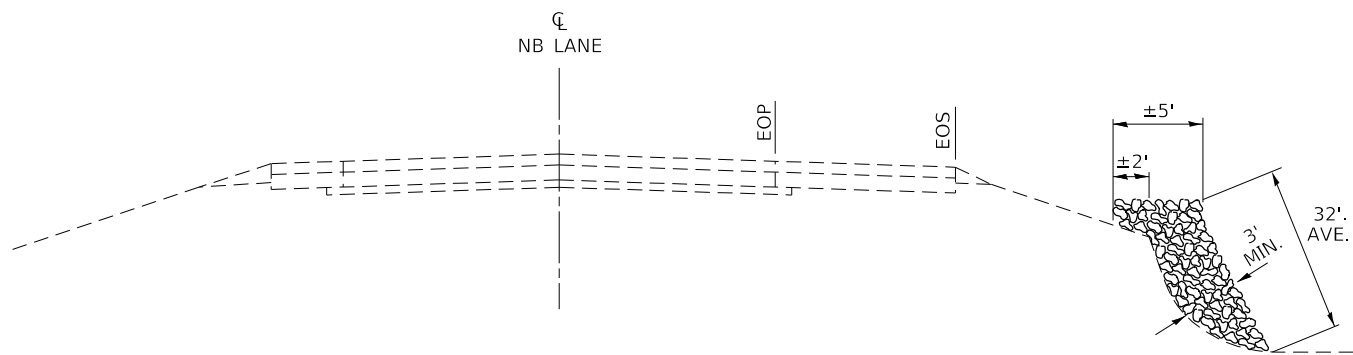
SCALE: _____ SHEET 1 OF 1 SHEETS STA. _____ TO STA. _____

F.A.I. RTE.	SECTION	COUNTY	TOTAL SHEETS	SHEET NO.
180	(06-1)SCR	BUREAU	7	4
CONTRACT NO. 66K92				
ILLINOIS FED. AID PROJECT				



DETAIL A

CLEAR ZONE = 30'-0" AS MEASURED FROM EDGE OF PAVEMENT



66.0 (60SC)
1,800'

STA. 365+00



S.N. 006-0126
STA. 341+00

STA. 341+85
(150' LT)
ROW

DETAIL A

STA. 352+11
(150' LT)
ROW

S.N. 006-0043
S.N. 006-0044
STA. 359+00

STA. 365+20 (180')
ROW

MODEL: Default
 FILE: \\bureau.com\data\illinois\pwr\DOT\Documents\DOT_Offices\District 3\Projects\0366693\CADD\03\3xxx\c-shc-cover.dgn

USER NAME = MARINIEJ	DESIGNED - EM	REVISED - _____
	DRAWN - EM	REVISED - _____
PLOT SCALE = 3.9370' / mm	CHECKED - RW	REVISED - _____
PLOT DATE = 2/24/2020	DATE - 2/24/2020	REVISED - _____

**STATE OF ILLINOIS
DEPARTMENT OF TRANSPORTATION**

GENERAL PLAN

SCALE: _____ SHEET 1 OF 1 SHEETS STA. _____ TO STA. _____

F.A.I. RTE. 180	SECTION (06-1)SCR	COUNTY BUREAU	TOTAL SHEETS 7	SHEET NO. 5
CONTRACT NO. 66K92				
ILLINOIS FED. AID PROJECT				



MODEL: Default
 FILE: \\nas01c.paulbanon.com\data\links\gov\PI\DOT\Documents\DOT_Offices\District 3\Projects\0366693\CADD\0366693-CADD\0366693-Cover.dgn

USER NAME = MARINIEJ	DESIGNED - EM	REVISED - _____
	DRAWN - EM	REVISED - _____
PLOT SCALE = 3.9370' / mm	CHECKED - RW	REVISED - _____
PLOT DATE = 2/13/2020	DATE - 2/13/2020	REVISED - _____

STATE OF ILLINOIS
DEPARTMENT OF TRANSPORTATION

PHOTOS

SCALE: _____ SHEET 1 OF 2 SHEETS STA. _____ TO STA. _____

F.A.I. RTE.	SECTION	COUNTY	TOTAL SHEETS	SHEET NO.
180	(06-1)SCR	BUREAU	7	6
CONTRACT NO. 66K92				
ILLINOIS FED. AID PROJECT				



MODEL: Default
 FILE: \\nas01c.psu.edu\baronm\data\illinois\pww\DOT\Documents\DOT_Offices\District 3\Projects\ID366K92\CADD\DATA\ID366K92-CHT-cover.dgn

USER NAME = MARINIEJ	DESIGNED - EM	REVISED - _____
	DRAWN - EM	REVISED - _____
PLOT SCALE = 3.9370' / mm	CHECKED - RW	REVISED - _____
PLOT DATE = 2/13/2020	DATE - 2/13/2020	REVISED - _____

STATE OF ILLINOIS
DEPARTMENT OF TRANSPORTATION

PHOTOS

SCALE: _____ SHEET 2 OF 2 SHEETS STA. _____ TO STA. _____

F.A.I. RTE.	SECTION	COUNTY	TOTAL SHEETS	SHEET NO.
180	(06-1)SCR	BUREAU	7	7
CONTRACT NO. 66K92				
ILLINOIS FED. AID PROJECT				