

F.A.S. ROUTE	SECTION	COUNTY	TOTAL SHEETS	SHEET NO.
1380	19-00027-00-SW	PEORIA	11	1
FEDERAL ROAD DIST NO.	ILLINOIS	CONTRACT NO. 89773		

STATE OF ILLINOIS DEPARTMENT OF TRANSPORTATION DIVISION OF HIGHWAYS PLANS FOR PROPOSED SAFE ROUTE TO SCHOOLS

FAS 1380 (ILLINOIS ROUTE 91)

SECTION 19-00027-00-SW
FEDERAL PROJECT NO. YPHN(839)

JOB NO. C-94-011-20
COUNTY OF PEORIA, ILLINOIS
VILLAGE OF DUNLAP

INDEX OF SHEETS

- 1 COVER SHEET
- 2 TYPICAL SECTIONS AND SUMMARY OF QUANTITIES
- 3 SCHEDULES OF QUANTITIES
- 4 EXISTING CONTROL, DEMOLITION PLAN AND PROFILE VIEWS
- 5 PLAN VIEW
- 6 ENLARGED CROSSWALK PLAN VIEW
- 7 PAVEMENT MARKINGS, SIGNAGE, LIGHTING, AND CONDUIT PLAN
- 8 STAGING AND TRAFFIC CONTROL
- 9 CABLE DIAGRAMS
- 10 RRFB LAYOUT PLAN
- 11 URBAN ENTRANCES, ACCESSIBLE TO THE DISABLED, FOR SEPARATED SIDEWALKS
- 12 LUMINAIRE PERFORMANCE TABLES

HIGHWAY STANDARDS

- 000001-07 STANDARD SYMBOLS, ABBREVIATIONS AND PATTERNS
- 424016-05 MID-BLOCK CURB RAMPS FOR SIDEWALKS
- 424031-02 MEDIAN PEDESTRIAN CROSSING
- 442201-03 CLASS C AND D PATCHES
- 606001-07 COMB. CURB TYPE B & COMB. CONCRETE CURB AND GUTTER
- 606301-04 PC CONCRETE ISLANDS AND MEDIANS
- 701201-05 LANE CLOSURE, 2L, 2W, DAY ONLY, FOR SPEEDS >= 45MPH
- 701301-04 LANE CLOSURE, 2L, 2W, SHORT TIME OPERATIONS
- 701306-04 LANE CLOSURE, 2L, 2W, SLOW MOVING OPERATIONS, DAY ONLY, FOR SPEEDS >= 45MPH
- 701501-06 URBAN LANE CLOSURE, 2L, 2W, UNDIVIDED
- 701701-10 URBAN LANE CLOSURE, MULTI-LANE INTERSECTION
- 701801-06 SIDEWALK, CORNER OR CROSSWALK CLOSURE
- 701901-08 TRAFFIC CONTROL DEVICES
- 720001-01 SIGN PANEL MOUNT DETAILS
- 720006-04 SIGN PANEL ERECTION DETAILS
- 728001-01 TELESCOPING STEEL SIGN SUPPORT
- 782001-01 CURB REFLECTORS
- 805001-01 ELECTRICAL SERVICE INSTALLATION DETAILS
- 812001 RACEWAY EMBEDDED IN STRUCTURE
- 814001-03 HANDHOLE
- 821101-02 LUMINAIRE WIRING IN POLE
- 825011-04 LIGHTING CONTROLLER, PEDESTAL MOUNTED, 240V
- 830006-05 LIGHT POLE ALUMINUM DAVIT ARM
- 836001-04 LIGHT POLE FOUNDATION
- 838001-01 BREAKAWAY DEVICES
- 878001-01 CONCRETE FOUNDATION DETAILS

VILLAGE OFFICIALS

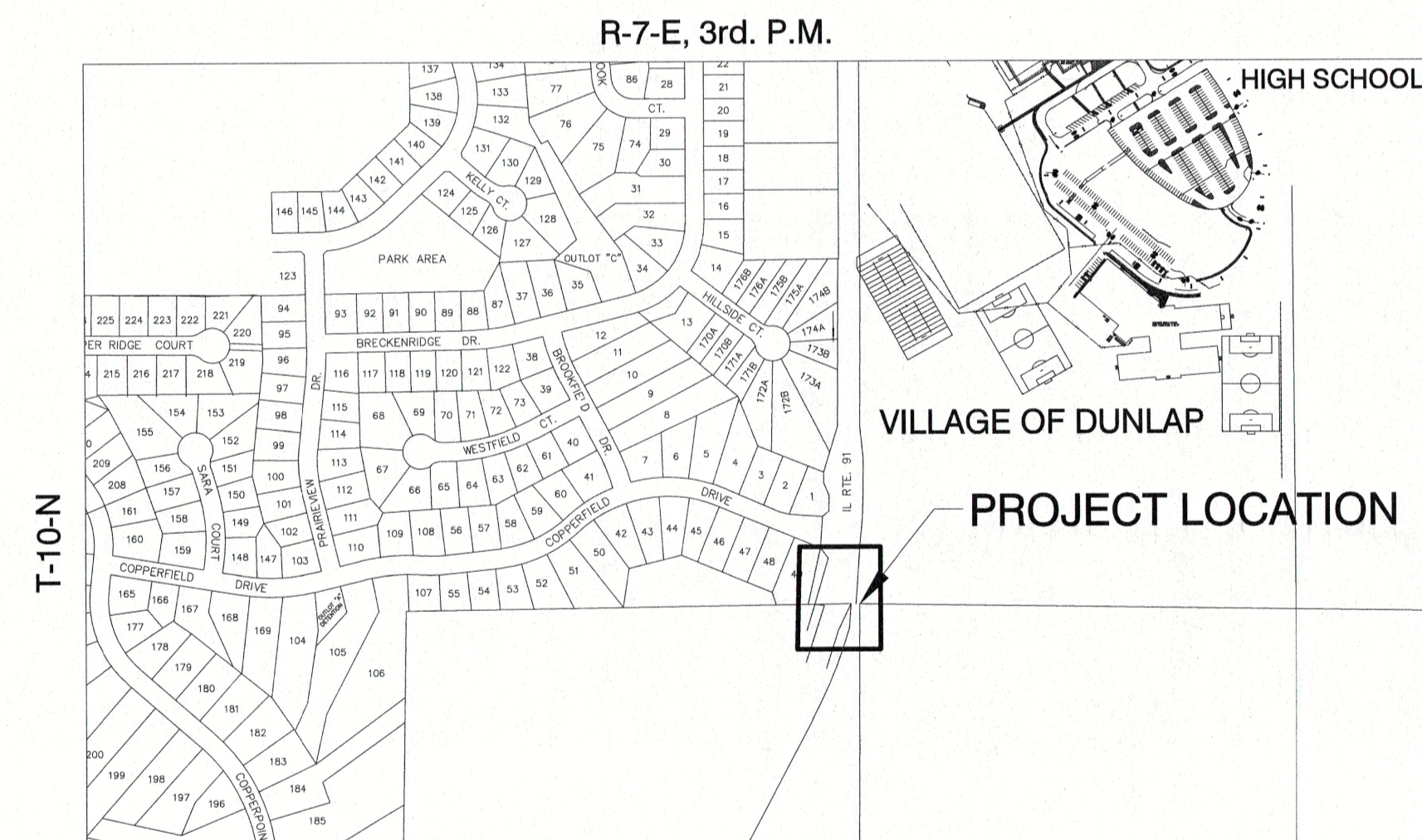
JACK FENNELL, PRESIDENT
TRACY KORGER, VILLAGE CLERK
DWIGHT JOHNSON, VILLAGE TREASURER

BOARD OF TRUSTEES

BOB ANDERSON
JACK ESTERDAHL
BEAU FEUCHTER
ERIC KEYSER
ROGER NELSON
SHEILA TAYLOR



LOCATION OF PROPOSED IMPROVEMENT

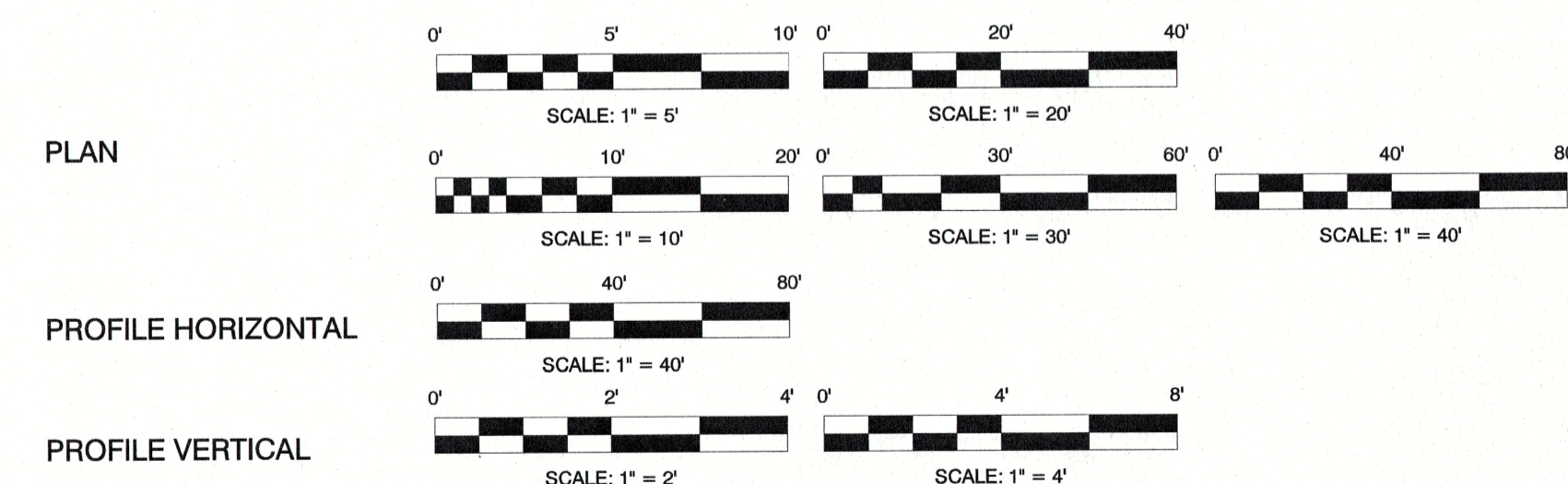


LOCATION SKETCH

SCALE: 1" = 500'

IL. RTE. 91 FROM COPPERFIELD DR.,
SOUTH 270 FT. TO SCHOOL PROPERTY
GROSS LENGTH OF PROJECT: 0.058 MI.
NET LENGTH OF PROJECT: 0.058 MI.
TOTAL NUMBER OF PLAN SHEETS = 4

SCALES



JULIE LOCATION

CALL JULIE 811 OR 1-800-892-0123 48 HOURS BEFORE YOU DIG
EXCLUDING SATURDAYS, SUNDAYS, AND HOLIDAYS

APPROVED *Jack Fennell*, 20 20

Village Dunlap President
LOCAL AGENCY OFFICIAL

PASSED *04-14*, 20 20

M. Soria
DISTRICT 4 ENGINEER OF
LOCAL ROADS & STREETS

RELEASING FOR
BID BASED ON
LIMITED REVIEW *04-14*, 20 20

Renald A. Barnett
REGION THREE ENGINEER
STATE OF ILLINOIS
DEPARTMENT OF TRANSPORTATION

PRINTED BY THE AUTHORITY
OF THE STATE OF ILLINOIS



W. Franklin Sturm II 4/7/20
DATE:

W. FRANKLIN STURM, II, P.E.
ILLINOIS REGISTRATION 43092
EXPIRES 11/30/21

PROPOSED IMPROVEMENT CONSISTS OF CONSTRUCTING NEW
SIDEWALKS AND REFUGE ISLAND, INSTALLING SIGNAGE, LIGHTING,
AND PAVEMENT MARKINGS.

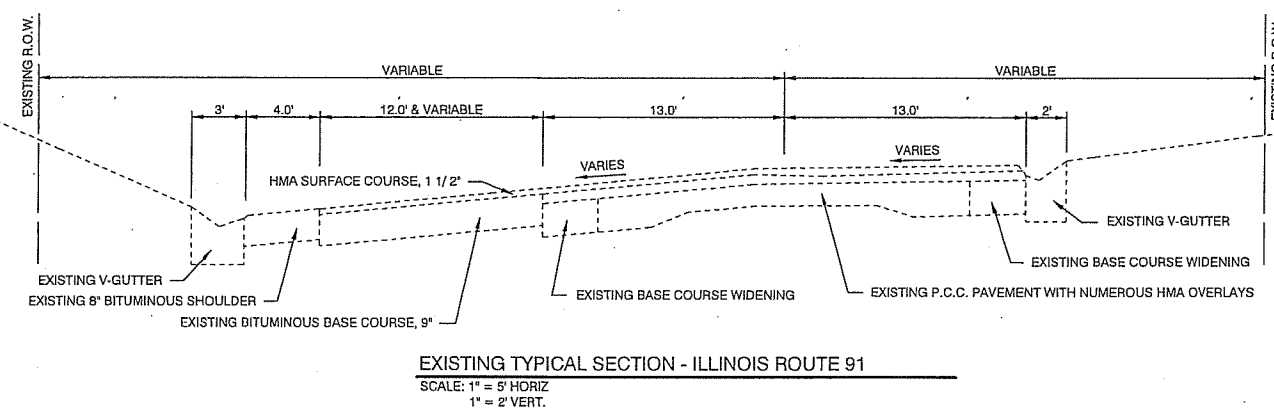
N:\18-422 Dunlap Pk at Crossing\DWG\1-COVER SHEET_18-422.dwg Apr 09, 2020

CONTRACT NO. 89773 CATALOG # 035843-00

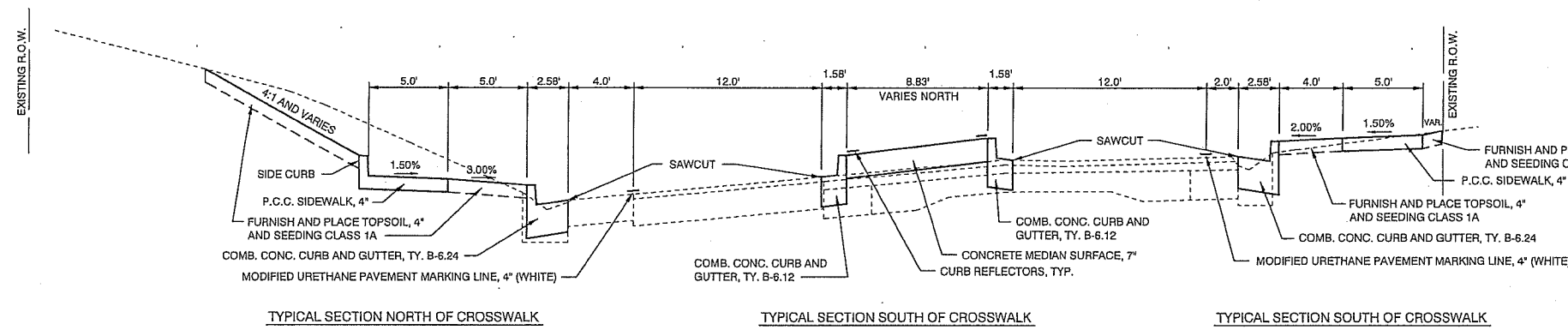
PEORIA COUNTY SECTION NO. 19-00027-00-SW

04-08-20 ADDENDUM 1 IDOT REVIEW

M MOHR & KERR ENGINEERING & LAND SURVEYING, P.C.
5901 N. Prospect Road, Suite 6B Office: (309) 692-8500
Peoria, Illinois 61614 Fax: (309) 692-8501
www.mohrandkerr.com Professional Design Firm #184.005091



EXISTING TYPICAL SECTION - ILLINOIS ROUTE 91
SCALE: 1" = 5' HORIZ
1" = 2' VERT.

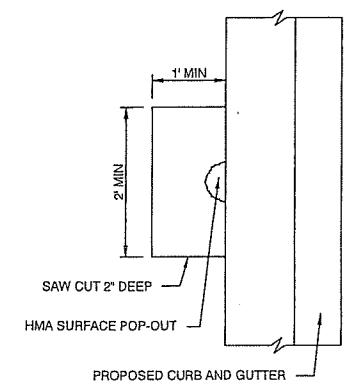


PROPOSED TYPICAL SECTION - ILLINOIS ROUTE 91
SCALE: 1" = 5' HORIZ
1" = 2' VERT.

SUMMARY OF QUANTITIES

CODE NO.	ITEM	QUANTITY	UNIT
20101400	NITROGEN FERTILIZER NUTRIENT	9	LB.
20101500	PHOSPHORUS FERTILIZER NUTRIENT	9	LB.
20101600	POTASSIUM FERTILIZER NUTRIENT	9	LB.
21101615	TOPSOIL FURNISH AND PLACE, 4"	436	S.Y.
25000110	SEEDING, CLASS 1A	0.1	ACRE
25100115	MULCH, METHOD 2	0.1	ACRE
42300300	PORTLAND CEMENT CONCRETE DRIVEWAY PAVEMENT, 7"	39	S.Y.
42400100	PORTLAND CEMENT CONCRETE SIDEWALK, 4"	1654	S.F.
42400800	DETECTABLE WARNINGS	40	S.F.
44000100	PAVEMENT REMOVAL	252	S.Y.
44000400	GUTTER REMOVAL	338	FT.
60603800	COMBINATION CONCRETE CURB & GUTTER, TYPE B-6.12	210	FT.
60605000	COMBINATION CONCRETE CURB & GUTTER, TYPE B-6.24	337	FT.
60618330	CONCRETE MEDIAN SURFACE, 7"	684	S.F.
67100100	MOBILIZATION	1	L. SUM
70100450	TRAFFIC CONTROL AND PROTECTION, STANDARD 701201	1	L. SUM
Δ 72000100	SIGN PANEL - TYPE 1	18	S.F.
72400310	REMOVE SIGN PANEL - TYPE 1	44	S.F.
Δ 72800100	TELESCOPING STEEL SIGN SUPPORT	30	FT.
Δ 78009000	MODIFIED URETHANE PAVEMENT MARKING - LETTERS AND SYMBOLS	47	S.F.
Δ 78009004	MODIFIED URETHANE PAVEMENT MARKING - LINE, 4"	1096	FT.
Δ 78009006	MODIFIED URETHANE PAVEMENT MARKING - LINE, 6"	60	FT.
Δ 78009008	MODIFIED URETHANE PAVEMENT MARKING - LINE, 8"	174	FT.
Δ 78009024	MODIFIED URETHANE PAVEMENT MARKING - LINE, 24"	54	FT.
Δ 78200020	CURB REFLECTORS	19	EA.
Δ 80500100	SERVICE INSTALLATION, TYPE A	1	EA.
Δ 81028340	UNDERGROUND CONDUIT, PVC, 1.5" DIA.	85	FT.
Δ 81028750	UNDERGROUND CONDUIT, COILABLE NONMETALLIC CONDUIT, 2" DIA.	110	FT.
Δ 81400700	HANDHOLE, PORTLAND CEMENT CONCRETE	1	EA.
Δ 81603000	UNIT DUCT, 600V, 2-1C No. 8, 1C No. 8 GROUND, (XLP-TYPE USE), 3/4" DIA. POLYETHYLENE	561	FT.
Δ 81702120	ELECTRIC CABLE IN CONDUIT, 600V (XLP-TYPE USE) 1/C NO. 8	1902	FT.
Δ 81702130	ELECTRIC CABLE IN CONDUIT, 600V (XLP-TYPE USE) 1/C NO. 6	10	FT.
Δ 81702150	ELECTRIC CABLE IN CONDUIT, 600V (XLP-TYPE USE) 1/C NO. 2	14	FT.
Δ 82110003	LUMINAIRE, LED, ROADWAY OUTPUT DESIGNATION C	2	EA.
Δ 82110007	LUMINAIRE, LED, ROADWAY OUTPUT DESIGNATION G	2	EA.
Δ 83000190	LIGHT POLE, ALUMINUM, 25 FT. M.H., 6 FT. DAVIT ARM	2	EA.
Δ 83003600	LIGHT POLE, ALUMINUM, 45 FT. M.H., 15 FT. DAVIT ARM	2	EA.
Δ 83600200	LIGHT POLE FOUNDATION, 24" DIA.	25	FT.
Δ 83600352	LIGHT POLE FOUNDATION, METAL, 11 1/2" BOLT CIRCLE, 8 5/8" x 6"	2	EA.
Δ 83600356	LIGHT POLE FOUNDATION, METAL, 15" BOLT CIRCLE, 8 5/8" x 6"	2	EA.
Δ 83800650	BREAKAWAY DEVICE, COUPLING WITH STAINLESS STEEL SCREEN	16	EA.
Δ 87301225	ELECTRIC CABLE IN CONDUIT, SIGNAL NO. 14 3C	242	FT.
Δ X0326263	EQUIPMENT CABINET	1	EA.
Δ X0327008	REMOVE AND RELOCATE SIGN, (SPECIAL)	1	EA.
X0327980	PAVEMENT MARKING REMOVAL - WATER BLASTING	658	S.F.
X0556100	PARTIAL DEPTH PATCHING (SPECIAL)	10	S.Y.
Δ X1400211	LIGHT POLE SPECIAL, 30"	5	EA.
Δ X1400326	RECTANGULAR RAPID FLASHING BEACON ASSEMBLY (COMPLETE)	4	EA.
X7270025	REMOVE EXISTING SIGN SUPPORT	2	EA.
Δ X8130110	JUNCTION BOX (SPECIAL)	2	EA.
Δ X8250505	LIGHTING CONTROLLER, SPECIAL	1	EA.

Δ SPECIALTY ITEMS



PARTIAL DEPTH PATCH DETAIL
N.T.S.

GENERAL NOTES

- PLAN ELEVATIONS - U.S.G.S. MEAN SEA LEVEL DATUM
ALL ELEVATIONS SHOWN ON THE PLANS ARE ESTABLISHED FROM U.S.G.S. MEAN SEA LEVEL DATUM.
- EARTH EXCAVATION - INCIDENTAL TO CURB, GUTTER, DRIVEWAY, MEDIAN SURFACE AND SIDEWALK
EARTH EXCAVATION AND BACKFILL FOR PROPOSED CURB AND GUTTERS, DRIVEWAY PAVEMENTS, CONCRETE MEDIAN SURFACE AND SIDEWALKS SHALL BE INCLUDED IN THE UNIT COST OF THE VARIOUS ITEMS.
THE BACKFILL MATERIAL UNDER THE CONCRETE ITEMS SHALL BE COMPACTED C.A.G. THE COST OF WHICH SHALL BE INCLUDED IN THE VARIOUS ITEMS.
- ENVIRONMENTAL REVIEWS
PRIOR TO THE USE OF ANY PROPOSED BORROW AREAS, USE AREAS (TEMPORARY ACCESS ROADS, DETOURS, RUN-AROUNDS, ETC.) AND/OR WASTE AREAS, THE CONTRACTOR SHALL FILE THE REQUIRED ENVIRONMENTAL RESOURCE REQUEST SURVEYS ACCORDING TO SECTION 107.22 OF THE STANDARD SPECIFICATIONS. THESE SURVEYS ARE REQUIRED IN ORDER FOR THE DEPARTMENT TO CONDUCT CULTURAL AND BIOLOGICAL RESOURCE SURVEYS FOR THE PROPOSED SITE.
THE REQUIRED ENVIRONMENTAL RESOURCE DOCUMENTATION SHALL INCLUDE THE FOLLOWING:
- BDE FORM 2289 (CULTURAL AND NATURAL RESOURCES REVIEW OF BORROW AREAS)
- BDE FORM 2290 (WASTE/USE AREA REVIEW)
- A LOCATION MAP SHOWING THE SIZE LIMITS AND LOCATION OF THE USE AREA
- COLOR PHOTOGRAPHS DEPICTING THE USE AREA
- BORROW AREA ENTRY AGREEMENT FORM - D4 P10101
PRIOR TO ANY WASTE MATERIALS BEING REMOVED FROM THE CONSTRUCTION SITE, THE REQUIRED ENVIRONMENTAL RESOURCE SURVEYS SHALL BE OBTAINED AND FILED BY THE CONTRACTOR. EXCESS WASTE PRODUCTS REMOVED FROM THE CONSTRUCTION SITE SHALL BE DISPOSED OF AS REQUIRED IN SECTION 202.03 OF THE STANDARD SPECIFICATIONS.
ANY PROTRUDING METAL BARS SHALL BE REMOVED PRIOR TO THE DISPOSAL OF BROKEN CONCRETE AT APPROVED DISPOSAL SITES.
PLEASE NOTE THAT A MINIMUM OF FOUR WEEKS SHALL BE ALLOWED FOR THE DISTRICT TO OBTAIN THE REQUIRED WASTE SITE ENVIRONMENTAL CLEARANCES AND SIX WEEKS FOR THE REQUIRED BORROW SITE ENVIRONMENTAL CLEARANCES.
- SIGN POST HOLES
VERTICAL HOLES SHALL BE CONSTRUCTED IN THE ISLAND PAVEMENT AND/OR CONCRETE MEDIAN OF THE TYPE SPECIFIED OR CONCRETE MEDIAN SURFACE 4 INCHES (100MM). THE HOLES SHALL BE 24 INCHES (600MM) IN DIAMETER OR 24 INCHES (600MM) SQUARE AND THEY SHALL BE FREE OF ANY OBSTRUCTION, EXCEPT EARTH, FOR A DEPTH OF 5 FEET (1.5M) AT THE LOCATIONS SHOWN ON THE PLANS OR AS DIRECTED BY THE ENGINEER. ANY HOLES NOT USED FOR THE PLACEMENT OF SIGNS SHALL BE FILLED AND COMPACTED FLUSH WITH THE TOP OF THE ISLAND PAVEMENT, CONCRETE MEDIAN OF THE TYPES SPECIFIED, OR CONCRETE MEDIAN SURFACE 4 INCHES (100MM). THE TOP 3 INCHES (75MM) OF SAID COMPACTED FILL SHALL CONSIST OF A HOT-MIX ASPHALT MIXTURE. ALL HOLES IN WHICH THE SIGN POSTS ARE INSTALLED AT THE TIME OF THIS CONTRACT SHALL BE SIMILARLY FILLED.
THIS WORK, INCLUDING ANY REQUIRED PAVEMENT REMOVAL NECESSARY TO CONSTRUCT THE SIGN POST HOLES, WILL NOT BE PAID FOR SEPARATELY BUT SHALL BE INCLUDED IN THE CONTRACT UNIT PRICE PER SQUARE FOOT (SQUARE METER) FOR ISLAND PAVEMENT AND/OR CONCRETE MEDIAN OF THE TYPE SPECIFIED, OR CONCRETE MEDIAN SURFACE, 4 INCHES (100MM).
- ADDITIONAL SUPPLEMENTAL TRAFFIC CONTROL
THE DEPARTMENT RESERVES THE RIGHT AT ANY TIME TO ADD ADDITIONAL TRAFFIC CONTROL SYSTEMS OR DEVICES WITHIN THE ACTIVE CONTRACT LIMITS, BY MEANS OF AN ADDITIONAL CONTRACT. ALL TERMS OF ARTICLE 105.08 OF THE STANDARD SPECIFICATIONS SHALL BE FOLLOWED BY EACH CONTRACTOR.
- SIGNING
SIGN LOCATIONS MAY VARY FROM THE STATIONS SHOWN ON THE PLANS IN ACCORDANCE WITH DIRECTIONS FROM THE ENGINEER AT THE TIME OF CONSTRUCTION. SIGN LOCATIONS MAY BE ADJUSTED IN THE FIELD TO AVOID ANY FOUND UTILITIES.
ALL WOOD POST LOCATIONS SHALL BE VERIFIED WITH THE BUREAU OF OPERATIONS, TRAFFIC SECTION, BEFORE INSTALLATION.
- P.C.C. SIDEWALK
ALL SIDEWALKS SHALL BE ADA COMPLIANT. THE SIDE CURB AT ACCESSIBLE RAMPS AND AT THE BACK OF SIDEWALKS SHALL BE INCLUDED IN THE COST AND MEASUREMENT OF THE P.C.C. SIDEWALK, 4".
- UNIT DUCT
THE CONTRACTOR WILL BE ALLOWED TO SUBSTITUTE PVC CONDUIT AND ELECTRICAL CABLE FOR THE UNIT DUCT PAY ITEM. THE NUMBER OF CONDUCTORS AND ASSOCIATED WIRE GAUGE SHALL MATCH WHAT IS SPECIFIED FOR UNIT DUCT. THIS WORK WILL BE MEASURED AND PAID FOR IN ACCORDANCE WITH THE STANDARD PROVISIONS FOR UNIT DUCT. THERE WILL BE NO ADDITIONAL COMPENSATION FOR THIS WORK.

M118-422 Durbin File 91 Consist/DWG02 TYPICAL SCHEDULE SUMMARY 18-022.dwg Apr 10, 2020

M MOHR & KERR ENGINEERING & LAND SURVEYING, P.C.
5901 N. Prospect Road, Suite 6B Office: (309) 692-8500
Peoria, Illinois 61614 Fax: (309) 692-8501
www.mohrandkerr.com Professional Design Firm #184.005091

DESIGNED	WFS	REVISED
DRAWN	DH/BR	REVISED
CHECKED	WFS	REVISED
DATE	02-19-20	REVISED Δ 04-08-20 ADDENDUM 1 IDOT REVIEW

STATE OF ILLINOIS
DEPARTMENT OF TRANSPORTATION

S.R.T.S., IL. RTE. 91 CROSSING, DUNLAP, IL
TYPICAL SECTIONS AND SUMMARY OF QUANTITIES

SCALE: AS NOTED SHEET NO. 2 OF 12 SHEETS STA. TO STA.

F.A.S. ROUTE	SECTION	COUNTY	TOTAL SHEETS	SHEET NO.
1380	19-00027-00-SW	PEORIA	12	2
ILLINOIS FEDERAL ROAD DIST. NO.			CONTRACT NO. 89773	

SEEDING SCHEDULE

FERTILIZER TO BE APPLIED @ 270 LB. PER ACRE @ 1-1-1 RATIO

LOCATION	TOPSOIL FURNISHING AND PLACING, 4" (S.Y.) * 21101615	SEEDING CLASS 1A (ACRE) 25000110	NITROGEN FERTILIZER NUTRIENT (POUND) 20101400	PHOSPHORUS FERTILIZER NUTRIENT (POUND) 20101500	POTASSIUM FERTILIZER NUTRIENT (POUND) 20101600	MULCH METHOD 2 (ACRE) 25100115
ILLINOIS ROUTE 91 LT. SIDE = 0.070 ACRE RT. SIDE = 0.030 ACRE	436	0.07 0.03	6 3	6 3	6 3	0.07 0.03
PROJECT TOTALS	436 S.Y.	0.1 ACRE	9 LB.	9 LB.	9 LB.	0.1 ACRE

* 436 S.Y. EQUATES TO 48.4 C.Y. OF TOPSOIL AT 4" THICK

PORTLAND CEMENT CONCRETE DRIVEWAY PAVEMENT, 7" 42300300

LOCATION	QUANTITY
RT. STA. 79+13.23 TO RT. STA. 79+52.56	39 S.Y.
PROJECT TOTAL	39 S.Y.

PORTLAND CEMENT CONCRETE SIDEWALK, 4" 42400100

LOCATION	QUANTITY
26.58' RT. STA. 78+99.82 TO 26.58' RT. STA. 79+13.23	69 S.F.
26.58' RT. STA. 79+52.56 TO 22.00' RT. STA. 80+07.04	325 S.F.
24.00' LT. STA. 80+07.04 TO 76.49' LT. STA. 81+89.28	1188 S.F.
RT. STA. 80+07.04 TO LT. STA. 80+07.04	72 S.F.
PROJECT TOTAL	1654 S.F.

DETECTABLE WARNINGS 42400800

LOCATION	QUANTITY
03.50' LT. STA. 80+07.04	10 S.F.
25.53' LT. STA. 80+07.04	10 S.F.
03.50' RT. STA. 80+07.04	10 S.F.
24.08' RT. STA. 80+07.04	10 S.F.
PROJECT TOTAL	40 S.F.

PAVEMENT REMOVAL 44000100

LOCATION	QUANTITY
CL. STA. 79+49.7 TO CL. STA. 80+56.6	175 S.Y.
18.0' RT. STA. 78+94.4 TO 18.0' RT. STA. 80+35.95	29 S.Y.
20.0' LT. STA. 79+72.9 TO 25.3' LT. STA. 81+69.25	48 S.Y.
PROJECT TOTAL	252 S.Y.

GUTTER REMOVAL 44000400

LOCATION	QUANTITY
18.00' RT. STA. 78 + 94.39 TO 18.00' RT. STA. 80 + 35.95	142 FT.
20.00' LT. STA. 79 + 72.89 TO 25.29' LT. STA. 81 + 69.29	196 FT.
PROJECT TOTAL	338 FT.

COMBINATION CONCRETE CURB AND GUTTER, TYPE B-6.12 60603800

LOCATION	QUANTITY
LT. STA. 79+52.67 TO 3.16' LT. STA. 80+53.61	105 FT.
RT. STA. 79+52.67 TO 3.16' LT. STA. 80+53.61	105 FT.
PROJECT TOTAL	210 FT.

COMBINATION CONCRETE CURB AND GUTTER, TYPE B-6.24 60605000

LOCATION	QUANTITY
19.48' RT. STA. 78+94.40 TO 20.00' RT. STA. 80+35.93	144 FT.
21.77' LT. STA. 79+72.89 TO 27.01' LT. STA. 81+68.26	193 FT.
PROJECT TOTAL	337 FT.

CONCRETE MEDIAN SURFACE, 7 INCH 60618330

LOCATION	QUANTITY
CL. STA. 79+53.3 TO CL. STA. 80+03.0	431 S.F.
CL. STA. 80+11.1 TO 03.1' LT. STA. 80+53.0	253 S.F.
PROJECT TOTAL	684 S.F.

SIGN PANEL - TYPE 1 72000100

LOCATION	QUANTITY
25.50' RT. STA. 79+54.25	9 S.F.
27.50' LT. STA. 80+61.10	9 S.F.
PROJECT TOTAL	18 S.F.

REMOVE SIGN PANEL - TYPE 1 72400310

LOCATION	QUANTITY
30.75' LT. STA. 80+23.23	22 S.F.
29.47' RT. STA. 80+22.61	22 S.F.
PROJECT TOTAL	44 S.F.

TELESCOPING STEEL SIGN SUPPORT 72800100

LOCATION	QUANTITY
25.50' RT. STA. 79+54.25	15 FT.
27.50' LT. STA. 80+61.10	15 FT.
PROJECT TOTAL	30 FT.

MODIFIED URETHANE PAVEMENT MARKINGS

IL. RTE. 91
STA. 78+94.39 TO STA. 81+93.23

	WHITE	YELLOW	TOTAL	S.F.
LETTERS AND SYMBOLS (S.F.) 78009000	47	-	47	S.F.
4" LINE (FT.) 78009004	539	557	1096	FT.
6" LINE (FT.) 78009006	60	-	60	FT.
8" LINE (FT.) 78009008	100	74	174	FT.
24" LINE (FT.) 78009024	54	-	54	FT.

CURB REFLECTORS 78200020

LOCATION	QUANTITY
CL. STA. 79+52.67 TO 3.16' LT. STA. 80+53.61	19 EA.
PROJECT TOTAL	19 EA.

CONDUIT AND ELECTRIC CABLE

FROM	TO	UNIT DUCT 600V 2-1C No. 8, 1C No 8 (XLP-TYPE- USE), 3/4"	U.G. CONDUIT COILABLE NONMETALLIC CONDUIT, 2"
AMEREN POLE	SERV. INSTALL	4 FT.	0 FT.
SERV. INSTALL	LIGHT CONTROLLER	40 FT.	0 FT.
LIGHT CONTROLLER SPL	H.H. #1	5 FT.	0 FT.
H.H. #1	P-1	33 FT.	0 FT.
H.H. #1	P-2	104 FT.	50 FT.
H.H. #1	P-3	165 FT.	0 FT.
P-3	P-4	210 FT.	60 FT.
PAGE TOTALS		561 FT.	110 FT.

HANDHOLE, PORTLAND CEMENT CONCRETE 81400700

LOCATION	QUANTITY
31.90' RT. STA. 80+12.00	1 EA.
36.11' LT. STA. 80+12.00	1 EA.
PROJECT TOTAL	2 EA.

CONDUIT AND ELECTRIC CABLE

FROM	TO	UNDRGRD C PVC 1.5"	ELCBL C SIGNAL 14 3C
RRFB CONTR.	JB1	6 FT.	24 FT.
JB1	RRFB1	3 FT.	18 FT.
JB1	JB2	27 FT.	66 FT.
JB2	RRFB2	3 FT.	18 FT.
JB2	RRFB3	12 FT.	36 FT.
JB2	RRFB4	34 FT.	80 FT.
PAGE TOTALS		85 FT.	242 FT.

LIGHT POLE FOUNDATION, METAL, 11 1/2" BOLT CIRCLE, 8 5/8" x 6' 83600352

LOCATION	QUANTITY
P-1 STA. 79+85.00, 32.3' RT.	1 EA.
P-2 STA. 80+45.00, 37' LT.	1 EA.
PROJECT TOTAL	2 EA.

LIGHT POLE FOUNDATION, METAL, 15" BOLT CIRCLE, 8 5/8" x 6' 83600356

LOCATION	QUANTITY
P-3 STA. 70.00, 30' RT.	1 EA.
P-4 STA. 83+05, 45' LT.	1 EA.
PROJECT TOTAL	2 EA.

LIGHT POLE, ALUMINUM, 25' M.H., 6' FT. DAVIT ARM 83000190

LOCATION	QUANTITY
P-1 STA. 79+85.00, 32.3' RT.	1 EA.
P-2 STA. 80+45.00, 37' LT.	1 EA.
PROJECT TOTAL	2 EA.

LIGHT POLE, ALUMINUM, 45' M.H., 15' FT. DAVIT ARM 83003600

LOCATION	QUANTITY
P-3 STA. 70.00, 30' RT.	1 EA.
P-4 STA. 83+05, 45' LT.	1 EA.
PROJECT TOTAL	2 EA.

BREAKAWAY DEVICE, COUPLING WITH STAINLESS STEEL SCREEN 83800650

LOCATION	QUANTITY
P-1 STA. 79+85.00, 32.3' RT.	4 EA.
P-2 STA. 80+45.00, 37' LT.	4 EA.
P-3 STA. 70.00, 30' RT.	4 EA.
P-4 STA. 83+05, 45' LT.	4 EA.
PROJECT TOTAL	16 EA.

LIGHT POLE FOUNDATION, 24" DIA. 83600200

LOCATION	QUANTITY
L-1	5 FT.
L-2	5 FT.
L-3	5 FT.
L-4	5 FT.
L-5	5 FT.
PROJECT TOTAL	25 FT.

EQUIPMENT CABINET X0326263

LOCATION	QUANTITY
32.04' RT. STA. 80+16.52	1 EA.
PROJECT TOTAL	1 EA.

REMOVE AND RELOCATE SIGN, (SPECIAL) X0327008

LOCATION	QUANTITY
(E) 32' RT. STA. 79+16 TO 32' RT. STA. 78+98	1 EA.
PROJECT TOTAL	1 EA.

PAVEMENT MARKINGS REMOVAL - WATER BLASTING X0327980

LOCATION	QUANTITY
LEFT ARROW	31 S.F.
4" LINE	487 S.F.
6" LINE	42 S.F.
8" LINE	98 S.F.
PROJECT TOTAL	658 S.F.

PARTIAL DEPTH PATCHING (SPECIAL) X0556100

LOCATION	QUANTITY
VARIOUS	10 S.Y.
PROJECT TOTAL	10 S.Y.

LIGHT POLE SPECIAL, 30' X1400211

LOCATION	QUANTITY
32.3' RT. STA. 79+04.7	1 EACH
29.4' RT. STA. 80+12.0	1 EACH
37.2' LT. STA. 80+07.0	1 EACH
37.2' LT. STA. 80+88.6	1 EACH
45.4' LT. STA. 81+64.6	1 EACH
PROJECT TOTAL	5 EACH

R R FL BEACON A COMP X1400326

LOCATION	QUANTITY
01.50' LT. STA. 80+02.45	1 EA.
28.59' LT. STA. 80+03.39	1 EA.
26.58' RT. STA. 80+10.56	1 EA.
01.49' RT. STA. 80+11.62	1 EA.
PROJECT TOTALS	4 EA.

REMOVE EXISTING SIGN SUPPORT X7270025

LOCATION	QUANTITY
30.75' LT. STA. 80+23.23	1 EA.
29.47' RT. STA. 80+22.61	1 EA.
PROJECT TOTAL	2 EA.

JUNCTION BOX (SPECIAL) X8130110

LOCATION	QUANTITY
1.27' LT. STA. 80+13.52	1 EA.
26.62' RT. STA. 80+13.52	1 EA.
PROJECT TOTAL	2 EA.

LIGHTING CONTROLLER, (SPECIAL) X8250505

LOCATION	QUANTITY
32.04' RT. STA. 80+16.52	1 EA.
PROJECT TOTAL	1 EA.

N:\18-422 Dunlap Rte 91 Crossing\DWG02 TYPICAL SCHEDULE SUMMARY 18-422.dwg Apr-08-2020

MOHR & KERR ENGINEERING & LAND SURVEYING, P.C.
 5901 N. Prospect Road, Suite 6B Office: (309) 692-8500
 Peoria, Illinois 61614 Fax: (309) 692-8501
 www.mohrandkerr.com Professional Design Firm #184.005091

DESIGNED	WFS	REVISED	
DRAWN	DH/BR	REVISED	
CHECKED	WFS	REVISED	
DATE	02-19-20	REVISED	04-08-20 ADDENDUM 1 IDOT REVIEW

STATE OF ILLINOIS
DEPARTMENT OF TRANSPORTATION

S.R.T.S., IL. RTE. 91 CROSSING, DUNLAP, IL
SCHEDULES OF QUANTITIES

SCALE:	AS NOTED	SHEET NO.	3 OF 12 SHEETS	STA.	- TO STA.	-
--------	----------	-----------	----------------	------	-----------	---

F.A.S. ROUTE	SECTION	COUNTY	TOTAL SHEETS	SHEET NO.
1380	19-00027-00-SW	PEORIA	12	3
CONTRACT NO. 89773				
ILLINOIS FEDERAL ROAD DIST NO.				

DETECTABLE WARNINGS	42400800
LOCATION	
03.50' LT. STA. 80+07.04	10 S.F.
25.53' LT. STA. 80+07.04	10 S.F.
03.50' RT. STA. 80+07.04	10 S.F.
24.08' RT. STA. 80+07.04	10 S.F.
PROJECT TOTAL	40 S.F.

PORTLAND CEMENT CONCRETE DRIVEWAY PAVEMENT, 7"	42300300
LOCATION	
RT. STA. 79+13.23 TO RT. STA. 79+52.56	39 S.Y.
PROJECT TOTAL	39 S.Y.

PORTLAND CEMENT CONCRETE SIDEWALK, 4"	42400100
LOCATION	
26.58' RT. STA. 78+99.82 TO 26.58' RT. STA. 79+13.23	69 S.F.
26.58' RT. STA. 79+52.56 TO 22.00' RT. STA. 80+07.04	325 S.F.
24.00' LT. STA. 80+07.04 TO 76.49' LT. STA. 81+89.28	1188 S.F.
RT. STA. 80+07.04 TO LT. STA. 80+07.04	72 S.F.
PROJECT TOTAL	1654 S.F.

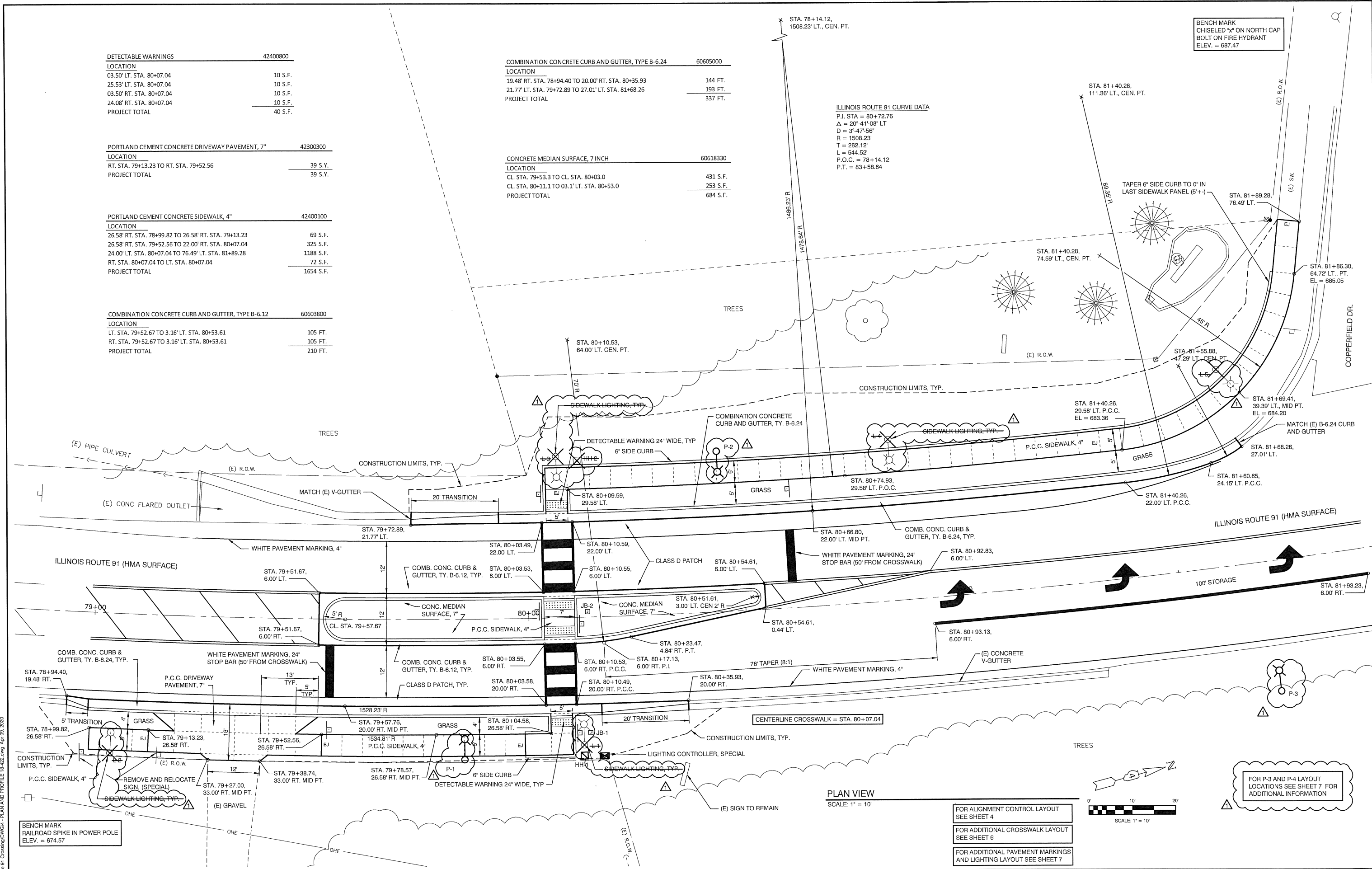
COMBINATION CONCRETE CURB AND GUTTER, TYPE B-6.12	60603800
LOCATION	
LT. STA. 79+52.67 TO 3.16' LT. STA. 80+53.61	105 FT.
RT. STA. 79+52.67 TO 3.16' LT. STA. 80+53.61	105 FT.
PROJECT TOTAL	210 FT.

COMBINATION CONCRETE CURB AND GUTTER, TYPE B-6.24	60605000
LOCATION	
19.48' RT. STA. 78+94.40 TO 20.00' RT. STA. 80+35.93	144 FT.
21.77' LT. STA. 79+72.89 TO 27.01' LT. STA. 81+68.26	193 FT.
PROJECT TOTAL	337 FT.

CONCRETE MEDIAN SURFACE, 7 INCH	60618330
LOCATION	
CL. STA. 79+53.3 TO CL. STA. 80+03.0	431 S.F.
CL. STA. 80+11.1 TO 03.1' LT. STA. 80+53.0	253 S.F.
PROJECT TOTAL	684 S.F.

ILLINOIS ROUTE 91 CURVE DATA
 P.I. STA = 80+72.76
 $\Delta = 20^{\circ}41'08''$ LT
 $D = 3^{\circ}47'56''$
 $R = 1508.23'$
 $T = 262.12'$
 $L = 544.52'$
 P.O.C. = 78+14.12
 P.T. = 83+58.64

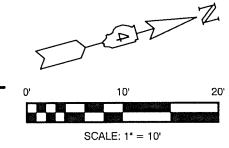
BENCH MARK
 CHISELED "X" ON NORTH CAP
 BOLT ON FIRE HYDRANT
 ELEV. = 687.47



BENCH MARK
 RAILROAD SPIKE IN POWER POLE
 ELEV. = 674.57

PLAN VIEW
 SCALE: 1" = 10'

- FOR ALIGNMENT CONTROL LAYOUT SEE SHEET 4
- FOR ADDITIONAL CROSSWALK LAYOUT SEE SHEET 6
- FOR ADDITIONAL PAVEMENT MARKINGS AND LIGHTING LAYOUT SEE SHEET 7



FOR P-3 AND P-4 LAYOUT LOCATIONS SEE SHEET 7 FOR ADDITIONAL INFORMATION

M MOHR & KERR ENGINEERING & LAND SURVEYING, P.C.
 5901 N. Prospect Road, Suite 6B Office: (309) 692-8500
 Peoria, Illinois 61614 Fax: (309) 692-8501
 www.mohrandkerr.com Professional Design Firm #184.005091

DESIGNED	WFS	REVISED
DRAWN	DH/BR	REVISED
CHECKED	WFS	REVISED
DATE	02-19-20	REVISED 04-08-20 ADDENDUM 1 IDOT REVIEW

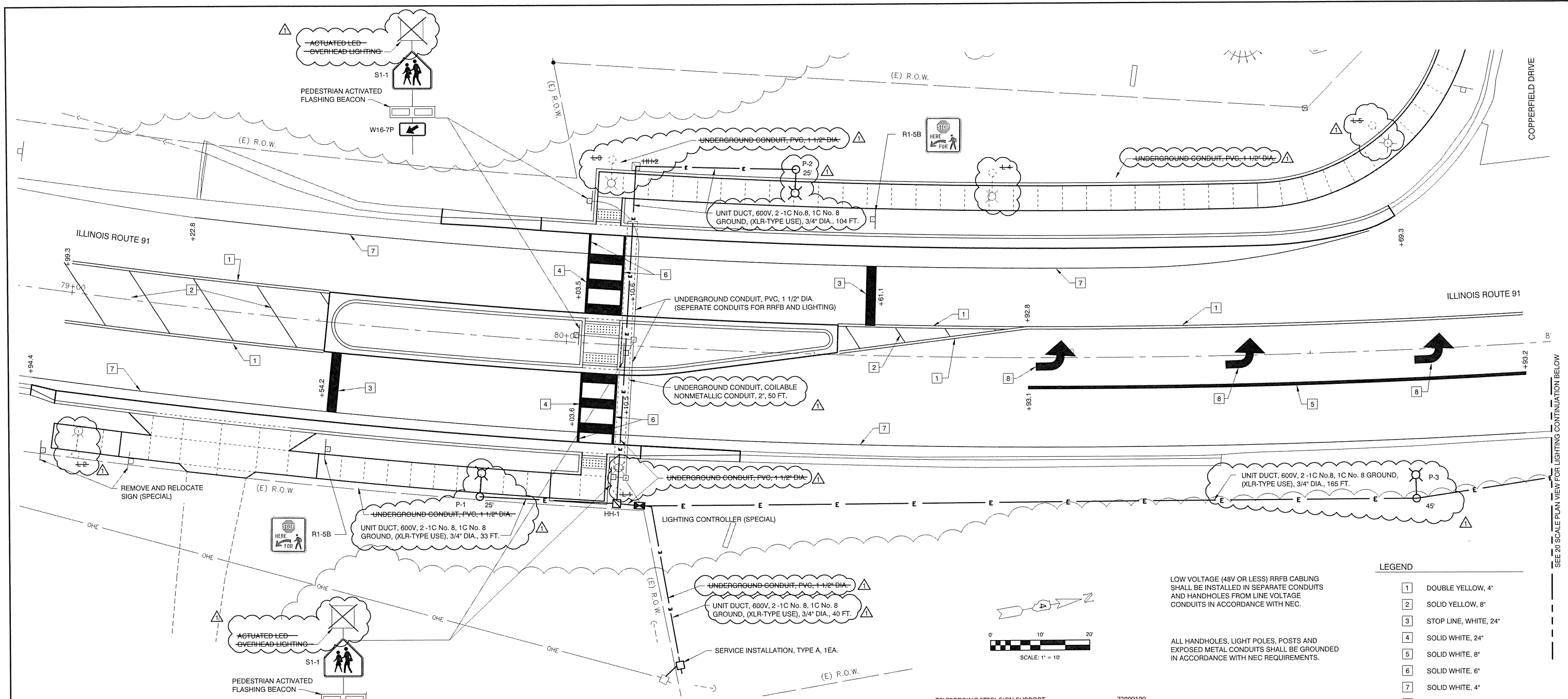
STATE OF ILLINOIS
 DEPARTMENT OF TRANSPORTATION

S.R.T.S., IL. RTE. 91 CROSSING, DUNLAP, IL
 PLAN VIEW
 SCALE: 1" = 10' SHEET NO. 5 OF 12 SHEETS STA. 78+80 TO STA. 81+95

F.A.S. ROUTE	SECTION	COUNTY	TOTAL SHEETS	SHEET NO.
1380	19-00027-00-SW	PEORIA	12	5

CONTRACT NO. 89773
 ILLINOIS FEDERAL ROAD DIST NO.

N:\18-422-Dunlap_Rte_91_Crossing\DWG\PLAN AND PROFILE\18-422.dwg, Apr 09, 2020



PAVEMENT MARKINGS, SIGNAGE, LIGHTING AND CONDUIT PLAN
SCALE: 1" = 10'

TELESCOPING STEEL SIGN SUPPORT 72800100

LOCATION	
25.50' RT. STA. 79+54.25	15 FT.
27.50' LT. STA. 80+61.10	15 FT.
PROJECT TOTAL	30 FT.

LIGHT POLE SPECIAL, 30'

LOCATION	
32.3' RT. STA. 79+04.7	1 EACH
29.4' RT. STA. 80+12.0	1 EACH
37.2' LT. STA. 80+07.0	1 EACH
37.2' LT. STA. 80+88.6	1 EACH
45.4' LT. STA. 81+64.6	1 EACH
PROJECT TOTAL	5 EACH

REMOVE AND RELOCATE SIGN, (SPECIAL)

LOCATION	
(E) 32' RT. STA. 79+16 TO 32' RT. STA. 78+98	1 EA.
PROJECT TOTAL	1 EA.

HANDHOLE, PORTLAND CEMENT CONCRETE

LOCATION	
31.00' RT. STA. 80+12.00	1 EA.
30.11' LT. STA. 80+12.00	1 EA.
PROJECT TOTAL	2 EA.

LIGHTING CONTROLLER, (SPECIAL)

LOCATION	
32.04' RT. STA. 80+16.52	1 EA.
PROJECT TOTAL	1 EA.

SIGN PANEL - TYPE 1

LOCATION	
25.50' RT. STA. 79+54.25	9 S.F.
27.50' LT. STA. 80+61.10	9 S.F.
PROJECT TOTAL	18 S.F.

SIGNAGE

LOCATION	TYPE	SIGN CODE
IL. RTE. 91		
25.50' RT. STA. 79+54.25	STOP HERE FOR PEDESTRIAN	R1-5B
01.50' LT. STA. 80+02.45	RRFB ASSEMBLY (COMPLETE)	S1-1, W16-7P, R10-25
28.59' LT. STA. 80+03.39	RRFB ASSEMBLY (COMPLETE)	S1-1, W16-7P, R10-25
26.58' RT. STA. 80+10.56	RRFB ASSEMBLY (COMPLETE)	S1-1, W16-7P, R10-25
01.49' RT. STA. 80+11.62	RRFB ASSEMBLY (COMPLETE)	S1-1, W16-7P, R10-25
27.50' LT. STA. 80+61.10	STOP HERE FOR PEDESTRIAN	R1-5B

MODIFIED URETHANE PAVEMENT MARKINGS

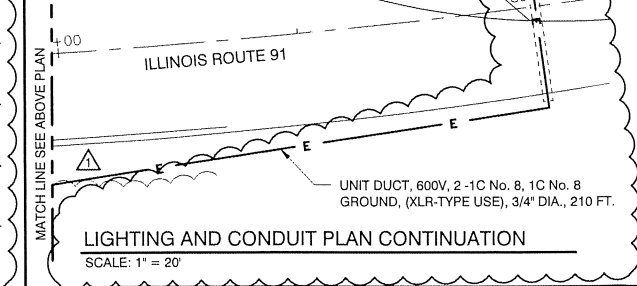
IL. RTE. 91	WHITE	YELLOW	TOTAL	S.F.
LETTERS AND SYMBOLS (S.F.) 78009000	47	-	47	47
4" LINE (FT.) 78009004	539	557	1096	1096
6" LINE (FT.) 78009006	60	-	60	60
8" LINE (FT.) 78009008	100	74	174	174
24" LINE (FT.) 78009024	54	-	54	54

CONDUIT AND ELECTRIC CABLE

FROM	TO	UNIT DUCT 600V 2-1C No. 8, 1C No. 8 (XLP-TYPE USE), 3/4"	U.G. CONDUIT COILABLE NONMETALLIC CONDUIT, 2"	LIGHT POLE, ALUMINUM, 25' M.H., 6' FT. DAVIT ARM	83000190
AMEREN POLE	SERV. INSTALL	4 FT.	0 FT.		
SERV. INSTALL	LIGHT CONTROLLER	40 FT.	0 FT.		
LIGHT CONTROLLER SPL	H.H. #1	5 FT.	0 FT.		
H.H. #1	P-1	33 FT.	0 FT.		
H.H. #1	P-2	104 FT.	50 FT.		
H.H. #1	P-3	165 FT.	0 FT.		
P-3	P-4	210 FT.	60 FT.		
PAGE TOTALS		561 FT.	110 FT.		

LIGHT POLE, ALUMINUM, 45' M.H., 15' FT. DAVIT ARM

LOCATION	
P-1 STA. 79+85.00, 32.3' RT.	1 EA.
P-2 STA. 80+45.00, 37' LT.	1 EA.
PROJECT TOTAL	2 EA.



LOW VOLTAGE (48V OR LESS) RRFB CABLING SHALL BE INSTALLED IN SEPARATE CONDUITS AND HANDHOLES FROM LINE VOLTAGE CONDUITS IN ACCORDANCE WITH NEC.

ALL HANDHOLES, LIGHT POLES, POSTS AND EXPOSED METAL CONDUITS SHALL BE GROUNDED IN ACCORDANCE WITH NEC REQUIREMENTS.

LEGEND

1	DOUBLE YELLOW, 4"
2	SOLID YELLOW, 8"
3	STOP LINE, WHITE, 24"
4	SOLID WHITE, 24"
5	SOLID WHITE, 8"
6	SOLID WHITE, 6"
7	SOLID WHITE, 4"
8	TURN ARROW, WHITE

ALL LIGHT POLES, EXPOSED CONDUITS, AND HANDHOLES SHALL BE GROUNDED/BONDED IN ACCORDANCE WITH NEC REQUIREMENTS.

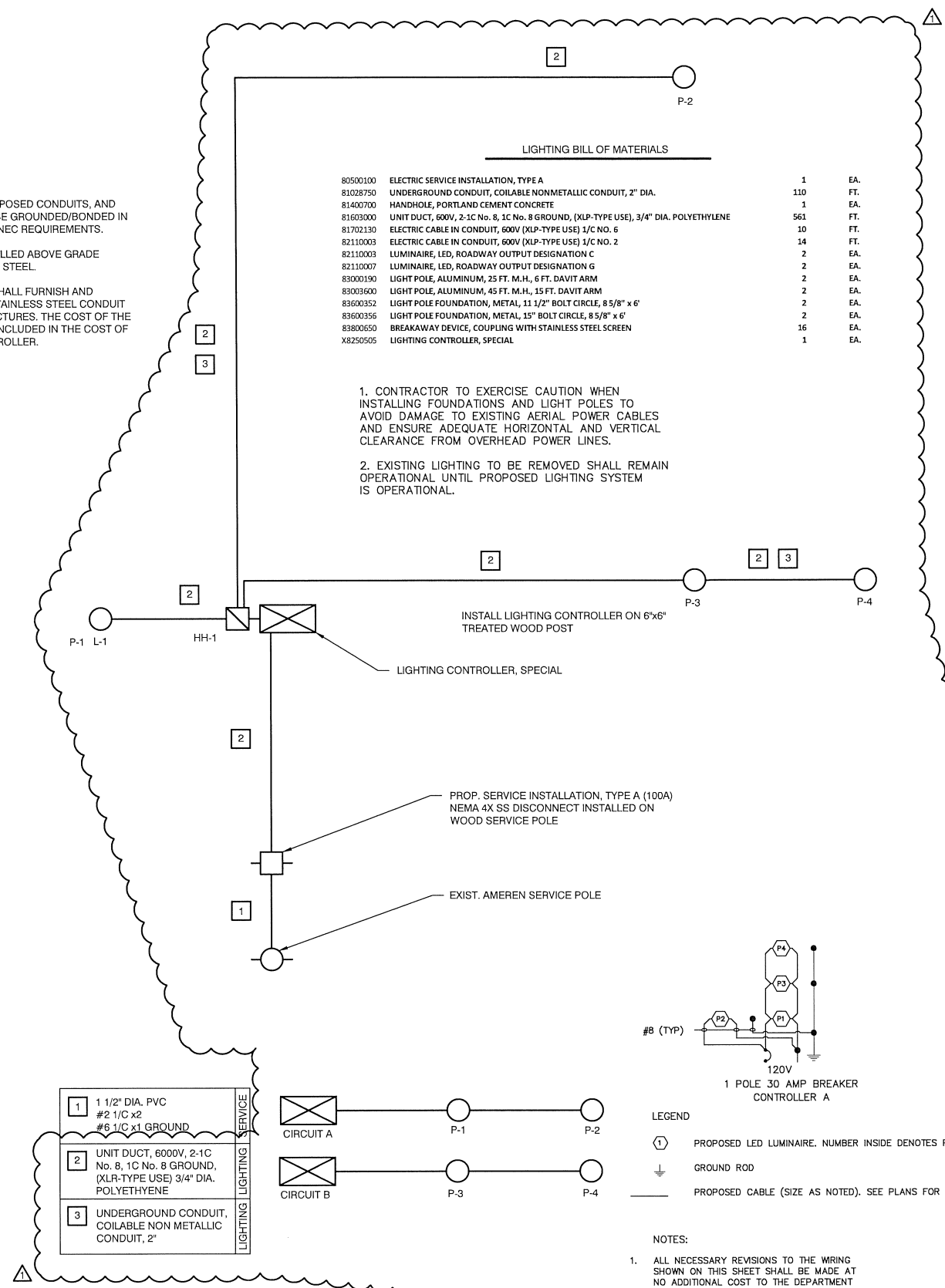
ALL CONDUITS INSTALLED ABOVE GRADE SHALL BE STAINLESS STEEL.

THE CONTRACTOR SHALL FURNISH AND INSTALL 1 1/2" DIA. STAINLESS STEEL CONDUIT ATTACHED TO STRUCTURES. THE COST OF THE CONDUIT SHALL BE INCLUDED IN THE COST OF THE LIGHTING CONTROLLER.

LIGHTING BILL OF MATERIALS

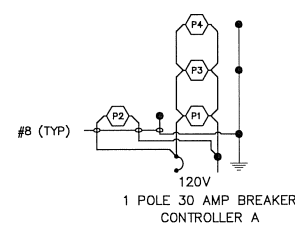
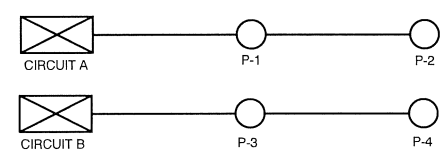
80500100	ELECTRIC SERVICE INSTALLATION, TYPE A	1	EA.
81028750	UNDERGROUND CONDUIT, COILABLE NONMETALLIC CONDUIT, 2" DIA.	110	FT.
81400700	HANDHOLE, PORTLAND CEMENT CONCRETE	1	EA.
81603000	UNIT DUCT, 600V, 2-1C No. 8, 1C No. 8 GROUND, (XLP-TYPE USE) 3/4" DIA. POLYETHYLENE	561	FT.
81702130	ELECTRIC CABLE IN CONDUIT, 600V (XLP-TYPE USE) 1/C NO. 6	10	FT.
82110003	ELECTRIC CABLE IN CONDUIT, 600V (XLP-TYPE USE) 1/C NO. 2	14	FT.
82110003	LUMINAIRE, LED, ROADWAY OUTPUT DESIGNATION C	2	EA.
82110007	LUMINAIRE, LED, ROADWAY OUTPUT DESIGNATION G	2	EA.
83000190	LIGHT POLE, ALUMINUM, 25 FT. M.H., 6 FT. DAVIT ARM	2	EA.
83003600	LIGHT POLE, ALUMINUM, 45 FT. M.H., 15 FT. DAVIT ARM	2	EA.
83600352	LIGHT POLE FOUNDATION, METAL, 11 1/2" BOLT CIRCLE, 8 5/8" x 6'	2	EA.
83600356	LIGHT POLE FOUNDATION, METAL, 15" BOLT CIRCLE, 8 5/8" x 6'	2	EA.
83800650	BREAKAWAY DEVICE, COUPLING WITH STAINLESS STEEL SCREEN	16	EA.
X8250565	LIGHTING CONTROLLER, SPECIAL	1	EA.

- CONTRACTOR TO EXERCISE CAUTION WHEN INSTALLING FOUNDATIONS AND LIGHT POLES TO AVOID DAMAGE TO EXISTING AERIAL POWER CABLES AND ENSURE ADEQUATE HORIZONTAL AND VERTICAL CLEARANCE FROM OVERHEAD POWER LINES.
- EXISTING LIGHTING TO BE REMOVED SHALL REMAIN OPERATIONAL UNTIL PROPOSED LIGHTING SYSTEM IS OPERATIONAL.



LIGHTING BILL OF MATERIALS

1	1 1/2" DIA. PVC #2 1/C x2 #6 1/C x1 GROUND
2	UNIT DUCT, 600V, 2-1C No. 8, 1C No. 8 GROUND, (XLR-TYPE USE) 3/4" DIA. POLYETHYLENE
3	UNDERGROUND CONDUIT, COILABLE NON METALLIC CONDUIT, 2"



LEGEND

(1) PROPOSED LED LUMINAIRE, NUMBER INSIDE DENOTES POLE NUMBER.

↓ GROUND ROD

— PROPOSED CABLE (SIZE AS NOTED), SEE PLANS FOR CABLE TYPE.

NOTES:

- ALL NECESSARY REVISIONS TO THE WIRING SHOWN ON THIS SHEET SHALL BE MADE AT NO ADDITIONAL COST TO THE DEPARTMENT AND TO THE SATISFACTION OF THE ENGINEER.

OVERHEAD LIGHTING CABLE DIAGRAM
LUMINAIRE VOLTAGE SHALL BE 120V

RRFB BILL OF MATERIALS

81028340	UNDERGROUND CONDUIT, PVC, 1.5" DIA.	85 FT.
87301225	#14 3/C	242 FT.
X0326263	EQUIPMENT CABINET	1 EA.
X1400326	RRFB ASSEMBLY (COMPLETE)	4 EA.
X8130110	JUNCTION BOX (SPECIAL)	2 EA.

ALL CONDUITS SHALL BE 1 1/2" DIA. PVC.

RRFB CONDUITS AND JUNCTION BOXES SHALL BE ISOLATED FROM 120V LIGHTING CIRCUITS.

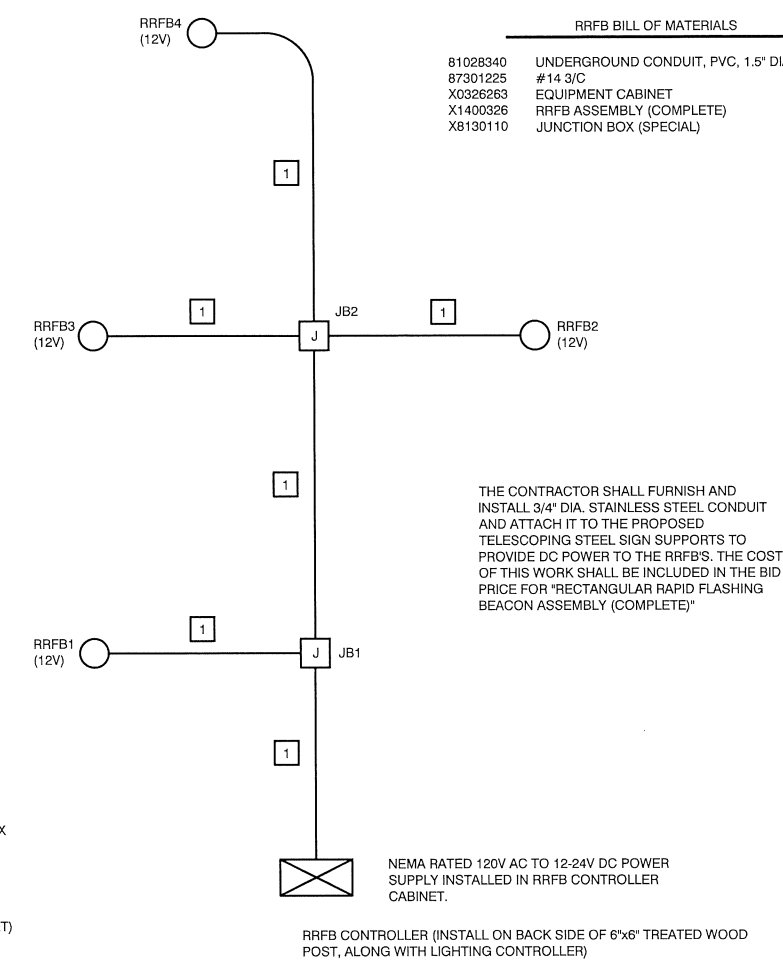
RRFB CONTROLLER SHALL BE POWERED FROM A 15A BREAKER INSTALLED INSIDE LIGHTING CONTROLLER.

ALL PEDESTRIAN PUSHBUTTONS SHALL BE HARD WIRED FROM THE RRFB CONTROLLER TO THE RRFB ASSEMBLY USING 3/C #14 CABLE.

THE RRFB CONTROLLER SHALL BE HOUSED INSIDE THE PROPOSED EQUIPMENT CABINET AND SHALL PROVIDE CENTRAL CONTROL OF ALL RRFB ASSEMBLIES.

UPON ACTIVATION BY PEDESTRIAN PUSH BUTTON, THE RRFB CONTROLLER SHALL ACTIVATE ALL RRFB LIGHT BARS IN THE CROSSWALK SYSTEM SIMULTANEOUSLY. RRFB LIGHT BARS SHALL FLASH SYNCHRONOUSLY AND THEN CEASE OPERATION AFTER A PROGRAMMABLE TIMEOUT.

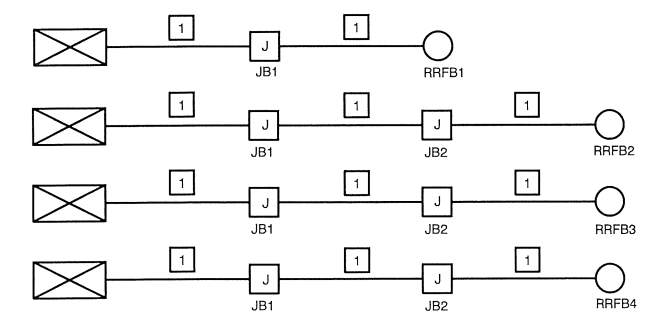
- J 12"x12"x24" COMPOSITE CONCRETE JUNCTION BOX
- 1 #14 3/C x1
- [Cabinet Symbol] EQUIPMENT CABINET (RRFB CONTROLLER CABINET)



THE CONTRACTOR SHALL FURNISH AND INSTALL 3/4" DIA. STAINLESS STEEL CONDUIT AND ATTACH IT TO THE PROPOSED TELESCOPING STEEL SIGN SUPPORTS TO PROVIDE DC POWER TO THE RRFB'S. THE COST OF THIS WORK SHALL BE INCLUDED IN THE BID PRICE FOR "RECTANGULAR RAPID FLASHING BEACON ASSEMBLY (COMPLETE)"

NEMA RATED 120V AC TO 12-24V DC POWER SUPPLY INSTALLED IN RRFB CONTROLLER CABINET.

RRFB CONTROLLER (INSTALL ON BACK SIDE OF 6"x6" TREATED WOOD POST, ALONG WITH LIGHTING CONTROLLER)



RRFB CABLE DIAGRAM
RRFB OPERATING VOLTAGE SHALL BE 12-24V DC (NOT TO EXCEED 48V PER NEC)

N:\18-422-Dunlap-91-Crossing\DWG\91-WIRING DIAGRAMS 18-422.dwg Apr 09, 2020

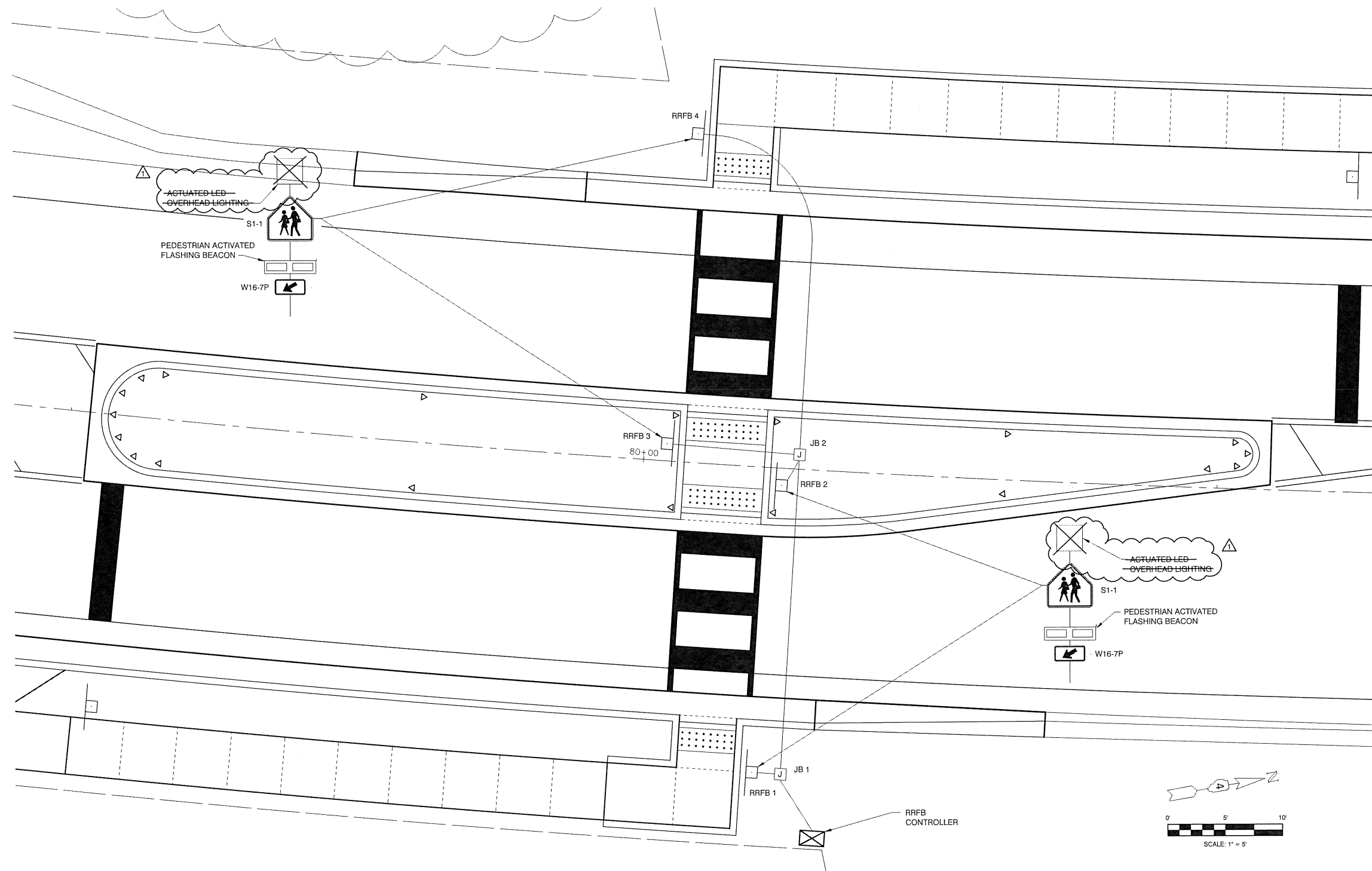
MOHR & KERR ENGINEERING & LAND SURVEYING, P.C.
5901 N. Prospect Road, Suite 6B Office: (309) 692-8500
Peoria, Illinois 61614 Fax: (309) 692-8501
www.mohrandkerr.com Professional Design Firm #184.005091

DESIGNED	WFS	REVISED
DRAWN	BWR	REVISED
CHECKED	WFS	REVISED
DATE	02-19-20	REVISED 04-08-20 ADDENDUM 1 IDOT REVIEW

STATE OF ILLINOIS
DEPARTMENT OF TRANSPORTATION

S.R.T.S., IL. RTE. 91 CROSSING, DUNLAP, IL
CABLE DIAGRAMS
SCALE: N.T.S. SHEET NO. 9 OF 12 SHEETS STA. TO STA.

F.A.S. ROUTE	SECTION	COUNTY	TOTAL SHEETS	SHEET NO.
1380	19-00027-00-SW	PEORIA	12	9
CONTRACT NO. 89773				
ILLINOIS FEDERAL ROAD DIST NO.				



R R FL BEACON A COMP	X1400326
LOCATION	QUANTITY
01.50' LT. STA. 80+02.45	1 EA.
28.59' LT. STA. 80+03.39	1 EA.
26.58' RT. STA. 80+10.56	1 EA.
01.49' RT. STA. 80+11.62	1 EA.
PROJECT TOTALS	4 EA.

JUNCTION BOX (SPECIAL)	X8130110
LOCATION	QUANTITY
1.27' LT. STA. 80+13.52	1 EA.
26.62' RT. STA. 80+13.52	1 EA.
PROJECT TOTAL	2 EA.

EQUIPMENT CABINET	X0326263
LOCATION	QUANTITY
32.04' RT. STA. 80+16.52	1 EA.
PROJECT TOTAL	1 EA.

CONDUIT AND ELECTRIC CABLE		UNDRGRD C PVC 1.5"	ELCBL C SIGNAL 14 3C
FROM	TO	81028340	87301225
RRFB CONTR.	JB1	6 FT.	24 FT.
JB1	RRFB1	3 FT.	18 FT.
JB1	JB2	27 FT.	66 FT.
JB2	RRFB2	3 FT.	18 FT.
JB2	RRFB3	12 FT.	36 FT.
JB2	RRFB4	34 FT.	80 FT.
PAGE TOTALS		85 FT.	242 FT.

RRFB LAYOUT PLAN
SCALE: 1" = 5'

N:\18-222 Dunlap\18-222.dwg - RRFB 18-222.dwg Apr 08, 2020

Luminaire Performance Table

Project

Date	Contract Number	Section Number	County
3/31/20	89773	19-00027-00-SW	PEORIA

Marked Route Number: FAS 1380 (ILLINOIS ROUTE 91) Municipality: DUNLAP

Roadway

Lane Width	#of Lanes	Median Width	I.E.S Surface Classification	Q-Zero Value
12	1	N/A	R3	0.07

Structure

Mounting Height	Arm Length	Set Back	Number of Luminaires (Highmast & Sign Lighting Only)
25 FT	6 FT	10 FT	N/A

Luminaire

Description	I.E.S. Lateral Distribution	I.E.S. Vertical Distribution
ROADWAY, OUTPUT DESIGNATION C	TYPE IV	SHORT

Total Light Loss Factor (LLF)	BUG Rating	Shields	Dimming Protocol
0.7	U = 0	N/A	0-10V

Layout

Spacing (to Nearest 5 Ft)	Configuration (Opposite, Staggered, 1 Sided, or Median)
70 FT	SINGLE SIDED

Performance

Average Illuminance, E_{AVE} (fc)	Uniformity Ratio, $E / E_{AVE MIN}$
0.8	3.0

Average Luminance, L_{AVE} (cd/m ²)	Uniformity Ratio, $L / L_{AVE MIN}$	Uniformity Ratio, L_{MAX} / L_{MIN}	Veiling Luminance Ratio, L_v / L_{MIN}
N/A	N/A	N/A	0.4:1

Light Trespass

Distance to ROW (behind pole)	Max. Horizontal Illuminance at ROW, E	Max. Vertical Illuminance at ROW, E
N/A	N/A	N/A

- Notes
- Set Back is from Edge of Pavement (white line) except for sign luminaires when it is vertical and horizontal distance from the sign to the luminaire.
 - Lighting calculations shall be performed with all luminaires oriented toward and perpendicular to roadway.
 - Total Light Loss Factor (LLF) = the product of "Lumen Maintenance" (LLD) = 0.9, "Dirt Depreciation" (LDD) = 0.8, and "Equipment Factors" (EF) = 0.95.
 - Performance requirements shall be the minimum acceptable standards of photometric performance for the luminaire, based on the given conditions above.

CALCULATIONS SHALL BE PERFORMED IN ONE DIRECTION ONLY

Luminaire Performance Table

Project

Date	Contract Number	Section Number	County
3/31/20	89773	19-00027-00-SW	PEORIA

Marked Route Number: FAS 1380 (ILLINOIS ROUTE 91) Municipality: DUNLAP

Roadway

Lane Width	#of Lanes	Median Width	I.E.S Surface Classification	Q-Zero Value
12	1	N/A	R3	0.07

Structure

Mounting Height	Arm Length	Set Back	Number of Luminaires (Highmast & Sign Lighting Only)
45 FT	15 FT	20 FT	N/A

Luminaire

Description	I.E.S. Lateral Distribution	I.E.S. Vertical Distribution
ROADWAY, OUTPUT DESIGNATION G	TYPE III	MEDIUM

Total Light Loss Factor (LLF)	BUG Rating	Shields	Dimming Protocol
0.7	U = 0	N/A	0-10V

Layout

Spacing (to Nearest 5 Ft)	Configuration (Opposite, Staggered, 1 Sided, or Median)
180 FT	SINGLE SIDED

Performance

Average Illuminance, E_{AVE} (fc)	Uniformity Ratio, $E / E_{AVE MIN}$
0.8	3.0

Average Luminance, L_{AVE} (cd/m ²)	Uniformity Ratio, L_{AVE} / L_{MIN}	Uniformity Ratio, L_{MAX} / L_{MIN}	Veiling Luminance Ratio, L_v / L_{MIN}
N/A	N/A	N/A	0.4:1

Light Trespass

Distance to ROW (behind pole)	Max. Horizontal Illuminance at ROW, E	Max. Vertical Illuminance at ROW, E
N/A	N/A	N/A

- Notes
- Set Back is from Edge of Pavement (white line) except for sign luminaires when it is vertical and horizontal distance from the sign to the luminaire.
 - Lighting calculations shall be performed with all luminaires oriented toward and perpendicular to roadway.
 - Total Light Loss Factor (LLF) = the product of "Lumen Maintenance" (LLD) = 0.9, "Dirt Depreciation" (LDD) = 0.8, and "Equipment Factors" (EF) = 0.95.
 - Performance requirements shall be the minimum acceptable standards of photometric performance for the luminaire, based on the given conditions above.

CALCULATIONS SHALL BE PERFORMED IN ONE DIRECTION ONLY

04-08-20 ENTIRE DRAWING

STATE OF ILLINOIS
DEPARTMENT OF TRANSPORTATION

LUMINAIRE PERFORMANCE TABLES
IL-91 CROSSWALK LIGHTING

F.A. RTE.	SECTION	COUNTY	TOTAL SHEETS	SHEET NO.
1380	19-00027-00-SW	PEORIA	12	12
CONTRACT NO. 89773				
ILLINOIS FED. AID PROJECT				

SCALE: SHEET 12 OF 12 SHEETS STA. TO STA.

MODEL: SMODEL.NAMES
FILE NAME: SFILES