

FILE PATH = p:\NECDM\N-AWS\lacompton\lne\local\FECOM\_D5822\_NA\Documents\01\_Americas\Transportation\62626938\_Circle\Phase\_1\000\_CDD\_006\_Roadway\Sheets\62A76\_Contract\0162A76-ht-500.dgn

CODE NUMBER	PAY ITEM		TOTAL QUANTITY	ROADWAY	ROADWAY	ROADWAY	RETAINING WALL	RETAINING WALL	RETAINING WALL	RETAINING WALL	RETAINING WALL	RETAINING WALL	RETAINING WALL	RETAINING WALL	RETAINING WALL	RETAINING WALL	RETAINING WALL	RETAINING WALL	BRIDGE MODS	BRIDGE MODS	LIGHTING/ITS		
				90% FED		90% FED	90% FED	90% FED	90% FED	90% FED	90% FED	90% FED	90% FED	90% FED	90% FED	90% FED	90% FED	90% FED	90% FED	90% FED	90% FED	90% FED	90% FED
				10% STATE	100% STATE	10% STATE	10% STATE	10% STATE	10% STATE	10% STATE	10% STATE	10% STATE	10% STATE	10% STATE	10% STATE	10% STATE	10% STATE	10% STATE	10% STATE	10% STATE	10% STATE	10% STATE	10% STATE
				0004	0004	0005	0044	0044	0044	0044	0044	0044	0044	0044	0044	0044	0044	0044	0044	0044	0047	0047	0021
				URBAN	URBAN	URBAN	016-1161	016-1163	016-1166	016-1167	016-1169		016-1819	016-1820	016-1821	016-1822	016-Z051	016-1110	016-1111	URBAN			
60260100	INLETS TO BE ADJUSTED	EACH	4	4																			
60300305	FRAMES AND LIDS TO BE ADJUSTED	EACH	23	23																			
60500040	REMOVING MANHOLES	EACH	49	49																			
60500050	REMOVING CATCH BASINS	EACH	133	133																			
60500060	REMOVING INLETS	EACH	5	5																			
60500105	FILLING MANHOLES	EACH	6	6																			
60500205	FILLING CATCH BASINS	EACH	11	11																			
60500080	REMOVING CATCH BASINS TO MAINTAIN FLOW	EACH	1	1																			
60600605	CONCRETE CURB, TYPE B	FOOT	774	774																			
60602800	CONCRETE GUTTER, TYPE B	FOOT	3,398	3,398																			
60603500	COMBINATION CONCRETE CURB AND GUTTER, TYPE B-6.06	FOOT	78	78																			
60605000	COMBINATION CONCRETE CURB AND GUTTER, TYPE B-6.24	FOOT	493	493																			
60618210	HOT-MIX ASPHALT MEDIAN SURFACE, 4 INCH	SQ FT	175	175																			
60618300	CONCRETE MEDIAN SURFACE, 4 INCH	SQ FT	290	290																			

\* DENOTES SPECIALTY ITEM      \*\* DENOTES NON-PARTICIPATING ITEM      % 0042

△ REV. 4-2-2020      REV-SEP



0162A76-ht-500.dgn  
 USER NAME = mlr:oe  
 PLOT SCALE = 20.0000 ' / in.  
 PLOT DATE = 1/31/2020

DESIGNED - MKW  
 DRAWN - MRC  
 CHECKED - JMG  
 DATE - 1/29/20

REVISED -  
 REVISED -  
 REVISED -  
 REVISED -

STATE OF ILLINOIS  
DEPARTMENT OF TRANSPORTATION

SUMMARY OF QUANTITIES  
 SCALE: NONE      SHEET 11 OF 30 SHEETS      STA.      TO STA.

F.A.I. RTE.	SECTION	COUNTY	TOTAL SHEETS	SHEET NO.
90/94/290	2015-019R	COOK	2155	16
CONTRACT NO. 62A76			ILLINOIS FED. AID PROJECT	

FILE PATH = p:\NECOM\N-A\51\electrom\ins\local\COM\_0502\_INA\Documents\01\_Americas\Transportation\60269938\_Circle\Phase\_1\0200\_CAD\026\_Roadway\Sheets\62A76\_Contract\0162A76-shr-S00.dgn

CODE NUMBER	PAY ITEM		TOTAL QUANTITY	ROADWAY	ROADWAY	ROADWAY	RETAINING WALL	RETAINING WALL	RETAINING WALL	RETAINING WALL	RETAINING WALL	RETAINING WALL	RETAINING WALL	RETAINING WALL	RETAINING WALL	RETAINING WALL	RETAINING WALL	BRIDGE MODS	BRIDGE MODS	LIGHTING/ ITS		
				90% FED		90% FED	90% FED	90% FED	90% FED	90% FED	90% FED	90% FED	90% FED	90% FED	90% FED	90% FED	90% FED	90% FED	90% FED	90% FED	90% FED	90% FED
				10% STATE	100% STATE	10% STATE	10% STATE	10% STATE	10% STATE	10% STATE	10% STATE	10% STATE	10% STATE	10% STATE	10% STATE	10% STATE	10% STATE	10% STATE	10% STATE	10% STATE	10% STATE	10% STATE
				0004	0004	0005	0044	0044	0044	0044	0044	0044	0044	0044	0044	0044	0044	0044	0044	0047	0047	0021
				URBAN	URBAN	URBAN	016-1161	016-1163	016-1166	016-1167	016-1169		016-1819	016-1820	016-1821	016-1822	016-Z051	016-1110	016-1111	URBAN		
73700100	REMOVE GROUND MOUNTED SIGN SUPPORT	EACH	3	3																		
73700200	REMOVE CONCRETE FOUNDATION - GROUND MOUNT	EACH	3	3																		
73700300	REMOVE CONCRETE FOUNDATION - OVERHEAD	EACH	5	5																		
* 73800125	STRUCTURAL STEEL SUPPORT FOR OVERHEAD SIGN STRUCTURE - BRIDGE MOUNTED	EACH	3	3																		
78000200	THERMOPLASTIC PAVEMENT MARKING - LINE 4"	FOOT	6,239	6,239																		
78000400	THERMOPLASTIC PAVEMENT MARKING - LINE 6"	FOOT	134	134																		
78000500	THERMOPLASTIC PAVEMENT MARKING - LINE 8"	FOOT	1,907	1,907																		
78000650	THERMOPLASTIC PAVEMENT MARKING - LINE 24"	FOOT	20	20																		
* 78009004	MODIFIED URETHANE PAVEMENT MARKING - LINE 4"	FOOT	30,558	30,558																		
* 78009006	MODIFIED URETHANE PAVEMENT MARKING - LINE 6"	FOOT	128	128																		
* 78009008	MODIFIED URETHANE PAVEMENT MARKING - LINE 8"	FOOT	23,433	23,433																		
* 78009012	MODIFIED URETHANE PAVEMENT MARKING - LINE 12"	FOOT	2,578	2,578																		

\* DENOTES SPECIALTY ITEM      \*\* DENOTES NON-PARTICIPATING ITEM      % 0042

REV. 4-2-2020      REV-SEP



0162A76-shr-S00.dgn	DESIGNED - MKW	REVISED -
USER NAME = ml-roe	DRAWN - MRC	REVISED -
PLOT SCALE = 20.0000' / in.	CHECKED - JMG	REVISED -
PLOT DATE = 1/31/2020	DATE - 1/29/20	REVISED -

STATE OF ILLINOIS  
DEPARTMENT OF TRANSPORTATION

SUMMARY OF QUANTITIES			
SCALE: NONE	SHEET 15	OF 30 SHEETS	STA. TO STA.

F.A.I. RTE.	SECTION	COUNTY	TOTAL SHEETS	SHEET NO.
90/94/290	2015-019R	COOK	2155	20
CONTRACT NO. 62A76				
ILLINOIS FED. AID PROJECT				

FILE PATH = p:\NECOM\Nashville\local\COM\_0502\_IL\0206\_Roadway\Sheets\62A76\_Contract\0162A76-sht-S00.dgn

CODE NUMBER	PAY ITEM		TOTAL QUANTITY	ROADWAY	ROADWAY	ROADWAY	RETAINING WALL	RETAINING WALL	RETAINING WALL	RETAINING WALL	RETAINING WALL	RETAINING WALL	RETAINING WALL	RETAINING WALL	RETAINING WALL	RETAINING WALL	RETAINING WALL	BRIDGE MODS	BRIDGE MODS	LIGHTING/ ITS		
				90% FED		90% FED	90% FED	90% FED	90% FED	90% FED	90% FED	90% FED	90% FED	90% FED	90% FED	90% FED	90% FED	90% FED	90% FED	90% FED	90% FED	90% FED
				10% STATE	100% STATE	10% STATE	10% STATE	10% STATE	10% STATE	10% STATE	10% STATE	10% STATE	10% STATE	10% STATE	10% STATE	10% STATE	10% STATE	10% STATE	10% STATE	10% STATE	10% STATE	10% STATE
				0004	0004	0005	0044	0044	0044	0044	0044	0044	0044	0044	0044	0044	0044	0044	0044	0044	0047	0047
				URBAN	URBAN	URBAN	016-1161	016-1163	016-1166	016-1167	016-1169		016-1819	016-1820	016-1821	016-1822	016-Z051	016-1110	016-1111	URBAN		
81702110	ELECTRIC CABLE IN CONDUIT, 600V (XLP-TYPE USE) 1/C NO. 10	FOOT	2,090																	2,090		
81702120	ELECTRIC CABLE IN CONDUIT, 600V (XLP-TYPE USE) 1/C NO. 8	FOOT	3,895																	3,895		
81702130	ELECTRIC CABLE IN CONDUIT, 600V (XLP-TYPE USE) 1/C NO. 6	FOOT	9,781																	9,781		
81702140	ELECTRIC CABLE IN CONDUIT, 600V (XLP-TYPE USE) 1/C NO. 4	FOOT	1,730																	1,730		
81702150	ELECTRIC CABLE IN CONDUIT, 600V (XLP-TYPE USE) 1/C NO. 2	FOOT	11,783																	11,783		
81800300	AERIAL CABLE, 3-1/C NO. 2 WITH MESSENGER WIRE	FOOT	5,986																	5,986		
81800330	AERIAL CABLE, 3-1/C NO. 6 WITH MESSENGER WIRE	FOOT	323																	323		
* 82110016	LUMINAIRE, LED, HIGHMAST, OUTPUT DESIGNATION I	EACH	78																	78		
* 82110021	LUMINAIRE, LED, UNDERPASS, WALLMOUNT, OUTPUT DESIGNATION D	EACH	7																	7		
* 82110026	LUMINAIRE, LED, UNDERPASS, SUSPENDED, OUTPUT DESIGNATION D	EACH	4																	4		
* 83505500	LIGHT TOWER, 130 FT. MOUNTING HEIGHT, LUMINAIRE MT. - 8	EACH	7																	7		
83700350	LIGHT TOWER FOUNDATION, 54" DIAMETER	FOOT	380																	380		
84100110	REMOVAL OF TEMPORARY LIGHTING UNIT	EACH	7																	7		
84200600	REMOVAL OF LIGHTING UNIT, NO SALVAGE	EACH	35																	35		

\* DENOTES SPECIALTY ITEM      \*\* DENOTES NON-PARTICIPATING ITEM      % 0042

REV. 4-2-2020      REV-SEP



0162A76-sht-S00.dgn	DESIGNED - MKW	REVISED -
USER NAME = ml-roe	DRAWN - MRC	REVISED -
PLOT SCALE = 20.0000' / in.	CHECKED - JMG	REVISED -
PLOT DATE = 1/31/2020	DATE - 1/29/20	REVISED -

**STATE OF ILLINOIS  
DEPARTMENT OF TRANSPORTATION**

SUMMARY OF QUANTITIES			
SCALE: NONE	SHEET 18	OF 30 SHEETS	STA. TO STA.

F.A.I. RTE. 90/94/290	SECTION 2015-019R	COUNTY COOK	TOTAL SHEETS 2155	SHEET NO. 23
CONTRACT NO. 62A76			ILLINOIS FED. AID PROJECT	

FILE PATH = p:\NECOM-NR-NR5\elecmon\ins\local\COM\_0502\_IL\002\_IL\002\_CAD\2016\_Roadway\Sheets\0162A76-CONTRACT\0162A76-sht-S00.dgn

CODE NUMBER	PAY ITEM	TOTAL QUANTITY	FUNDING																	
			ROADWAY			RETAINING WALL			RETAINING WALL			RETAINING WALL			RETAINING WALL			BRIDGE MODS		LIGHTING/ ITS
			90% FED	100% STATE	90% FED	90% FED	90% FED	90% FED	90% FED	90% FED	90% FED	90% FED	90% FED	90% FED	90% FED	90% FED	90% FED	90% FED	90% FED	
			0004	0004	0005	0044	0044	0044	0044	0044	0044	0044	0044	0044	0044	0044	0044	0044	0044	
			URBAN	URBAN	URBAN	016-1161	016-1163	016-1166	016-1167	016-1169		016-1819	016-1820	016-1821	016-1822	016-Z051	016-1110	016-1111	URBAN	
X020004	HIGH-EARLY-STRENGTH PORTLAND CEMENT PAVEMENT 11" (JOINTED)	SO YD	2,956	2,956																
* X0320023	CLOSED CIRCUIT TELEVISION DOME CAMERA, HD	EACH	3																3	
* X0320024	ETHERNET MANAGE SWITCH	EACH	17																17	
X0320085	MONITORING ADJACENT STRUCTURES	L SUM	1	1																
X0321750	REMOVE TEMPORARY CONCRETE BARRIER, STATE OWNED	FOOT	3,543	3,543																
X0321963	MICRO-PILES	EACH	4	4																
X0321973	MODIFY EXISTING SERVICE INSTALLATION	EACH	1																1	
* X0322141	REMOVE TEMPORARY WOOD POLE	EACH	22																22	
* X0322433	LIGHT TOWER, SERVICE PAD	EACH	4																4	
* X0322442	TONE EQUIPMENT - 3 FREQUENCY RECEIVER PROGRAMMABLE	EACH	36																36	
* X0322443	TONE EQUIPMENT - 3 FREQUENCY TRANSMITTER PROGRAMMABLE	EACH	36																36	
* X0322444	TONE EQUIPMENT - POWER SUPPLY	EACH	18																18	
* X0322445	TONE EQUIPMENT - MOUNTING FRAME	EACH	5																5	
X0322906	WEEP HOLES CORED	EACH	42				42													
X0323432	MICROPILE LOAD TEST	EACH	1	1																

\* DENOTES SPECIALTY ITEM      \*\* DENOTES NON-PARTICIPATING ITEM      % 0042

REV. 4-2-2020      REV-SEP



0162A76-sht-S00.dgn	DESIGNED - MKW	REVISED -
USER NAME = ml-roe	DRAWN - MRC	REVISED -
PLOT SCALE = 20.0000' / in.	CHECKED - JMG	REVISED -
PLOT DATE = 1/31/2020	DATE - 1/29/20	REVISED -

STATE OF ILLINOIS  
DEPARTMENT OF TRANSPORTATION

SUMMARY OF QUANTITIES

SCALE: NONE      SHEET 20 OF 30 SHEETS      STA.      TO STA.

F.A.I. RTE.	SECTION	COUNTY	TOTAL SHEETS	SHEET NO.
90/94/290	2015-019R	COOK	2155	25
CONTRACT NO. 62A76				
ILLINOIS FED. AID PROJECT				

FILE PATH = p:\ME\04-NR-AWS\Projects\Illinois\Transportation\6269938 - Circle Phase\1\2020 CAD\005-Roadway\Sheets\62A76 - Contract\0162A76-sht-S00.dgn

CODE NUMBER	PAY ITEM		TOTAL QUANTITY	ROADWAY	ROADWAY	ROADWAY	RETAINING WALL	RETAINING WALL	RETAINING WALL	RETAINING WALL	RETAINING WALL	RETAINING WALL	RETAINING WALL	RETAINING WALL	RETAINING WALL	RETAINING WALL	RETAINING WALL	RETAINING WALL	BRIDGE MODS	BRIDGE MODS	LIGHTING/ ITS		
				90% FED		90% FED	90% FED	90% FED	90% FED	90% FED	90% FED	90% FED	90% FED	90% FED	90% FED	90% FED	90% FED	90% FED	90% FED	90% FED	90% FED	90% FED	90% FED
				10% STATE	100% STATE	10% STATE	10% STATE	10% STATE	10% STATE	10% STATE	10% STATE	10% STATE	10% STATE	10% STATE	10% STATE	10% STATE	10% STATE	10% STATE	10% STATE	10% STATE	10% STATE	10% STATE	10% STATE
				0004	0004	0005	0044	0044	0044	0044	0044	0044	0044	0044	0044	0044	0044	0044	0044	0044	0047	0047	0021
				URBAN	URBAN	URBAN	016-1161	016-1163	016-1166	016-1167	016-1169		016-1819	016-1820	016-1821	016-1822	016-Z051	016-1110	016-1111	URBAN			
X5610700	WATERMAIN REMOVAL	FOOT	100	100																			
X0100026	SPECIAL EXCAVATION	CU YD	903	903																			
* Z0004002	BOLLARDS	EACH	4																		4		
Z0005872	BONDED PREFORMED JOINT SEALER, 2 INCH	FOOT	19																		19		
* Z0010480	CLEANING AND PAINTING SIGN STRUCTURE NO. 1	L SUM	1	1																			
* Z0010481	CLEANING AND PAINTING SIGN STRUCTURE NO. 2	L SUM	1	1																			
* Z0010482	CLEANING AND PAINTING SIGN STRUCTURE NO. 3	L SUM	1	1																			
* Z0010483	CLEANING AND PAINTING SIGN STRUCTURE NO. 4	L SUM	1	1																			
* Z0010484	CLEANING AND PAINTING SIGN STRUCTURE NO. 5	L SUM	1	1																			
* Z0012754	STRUCTURAL REPAIR OF CONCRETE (DEPTH EQUAL TO OR LESS THAN 5 INCHES)	SQ FT	232	55			99	11		45	6							16					
Z0012755	STRUCTURAL REPAIR OF CONCRETE (DEPTH GREATER THAN 5 INCHES)	SQ FT	2					2															
Z0013798	CONSTRUCTION LAYOUT	L SUM	1	1																			
Z0018000	DRAINAGE SCUPPERS (SPECIAL)	EACH	1																		1		
* Z0019000	DRILL HOLE THROUGH RETAINING WALL	EACH	3																		3		

\* DENOTES SPECIALTY ITEM      \*\* DENOTES NON-PARTICIPATING ITEM      % 0042

△ REV. 4-2-2020



0162A76-sht-S00.dgn  
 USER NAME = mlroe  
 PLOT SCALE = 20.0000' / in.  
 PLOT DATE = 1/31/2020

DESIGNED - MKW  
 DRAWN - CAT  
 CHECKED - JMG  
 DATE - 1/29/20

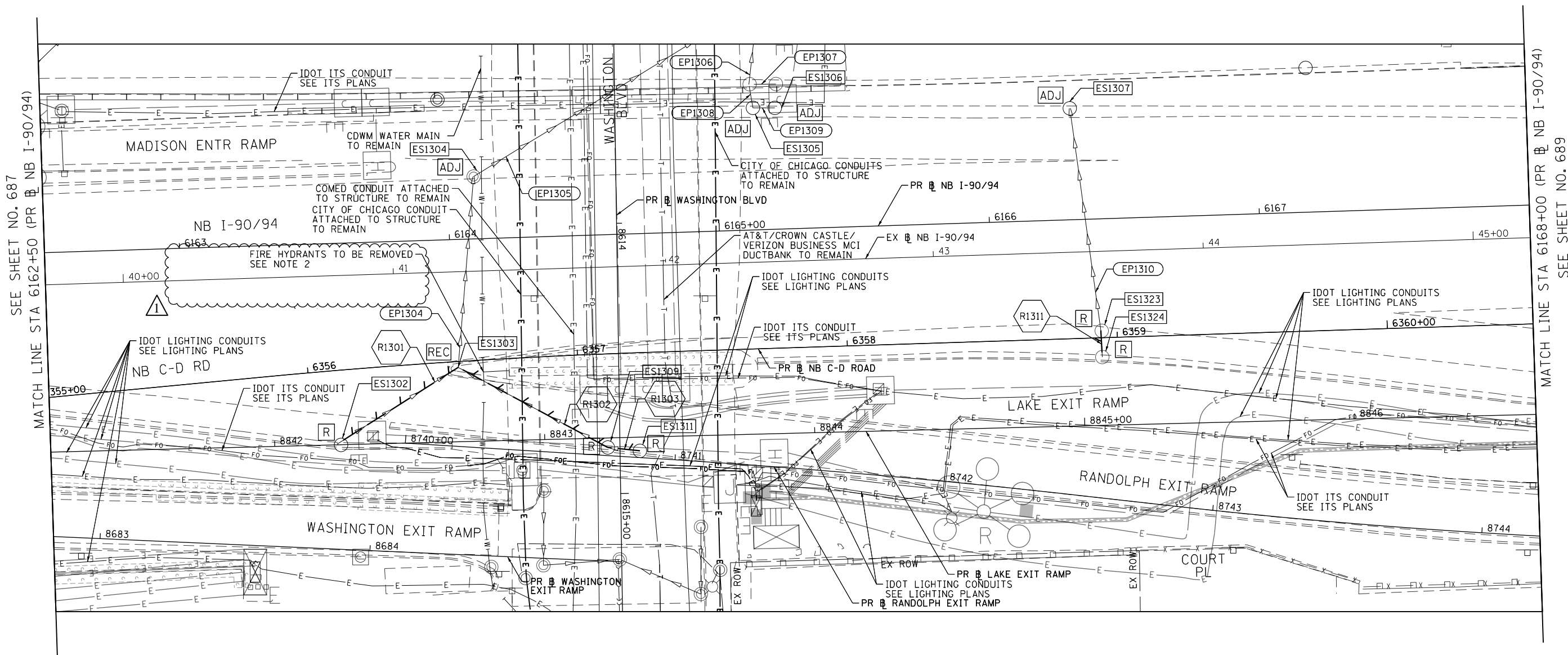
REVISED -  
 REVISED -  
 REVISED -  
 REVISED -

STATE OF ILLINOIS  
 DEPARTMENT OF TRANSPORTATION

SUMMARY OF QUANTITIES

SCALE: NONE      SHEET 30 OF 30 SHEETS      STA.      TO STA.

F.A.I. RTE.	SECTION	COUNTY	TOTAL SHEETS	SHEET NO.
90/94/290	2015-019R	COOK	2155	35
CONTRACT NO. 62A76				
ILLINOIS FED. AID PROJECT				



SEE SHEET NO. 687  
MATCH LINE STA 6162+50 (PR NB I-90/94)

MATCH LINE STA 6168+00 (PR NB I-90/94)  
SEE SHEET NO. 689

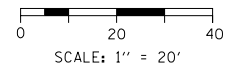
REV. 4-2-2020

**EXISTING DRAINAGE AND UTILITIES LEGEND**

- |  |                                       |  |   |  |   |
|--|---------------------------------------|--|---|--|---|
|  | EXISTING MANHOLE                      |  | DRAINAGE STRUCTURE TO BE RECONSTRUCTED                      |  | STORM SEWER TO BE REMOVED BY OTHERS (CONTRACT 62A77)              |
|  | EXISTING CATCH BASIN                  |  | DRAINAGE STRUCTURE TO BE RECONSTRUCTED (SPECIAL)            |  | COMBINED SEWER TO BE REMOVED BY OTHERS (CONTRACT 62A77)           |
|  | EXISTING INLET                        |  | DRAINAGE STRUCTURE TO BE ADJUSTED WITH NEW FRAME AND/OR LID |  | STORM SEWER TO BE FILLED AND ABANDONED BY OTHERS (CONTRACT 62A77) |
|  | MANHOLE TO BE INSTALLED BY OTHERS     |  | DRAINAGE STRUCTURE TO BE REMOVED                            |  | STORM SEWER TO BE INSTALLED BY OTHERS (SEE NOTE 1)                |
|  | CATCH BASIN TO BE INSTALLED BY OTHERS |  | DRAINAGE STRUCTURE TO BE FILLED                             |  | STORM SEWER REMOVAL   |
|  | INLET TO BE INSTALLED BY OTHERS       |  | DRAINAGE STRUCTURE TO BE REMOVED TO MAINTAIN FLOW           |  | ABANDON AND FILL EXISTING STORM SEWER                             |
|  | DRAINAGE STRUCTURE TO BE ADJUSTED     |  |   |  |   |

**NOTES**

- STORM SEWERS TO BE INSTALLED BY OTHERS IN THE PREVIOUS CONTRACTS (CONTRACT 60X79 AND 60X93) ARE SHOWN FOR INFORMATION ONLY. CONTRACTOR COOPERATION IS REQUIRED.
- THE CONTRACTOR SHALL COORDINATE THE REMOVAL OF THE FIRE HYDRANT WITH CDWM AND AS IDENTIFIED IN THE FIRE HYDRANTS TO BE REMOVED SPECIAL PROVISION. THE CONTRACTOR SHALL PERFORM ALL EARTHWORK ACTIVITIES, REMOVAL AND RESTORATION WORK AS IDENTIFIED IN THE ROADWAY PLANS.



D162A76-Sht-Drain-Ex-13.dgn	DESIGNED - MRC	REVISED - 4/1/2020
USER NAME = mrc155	DRAWN - MRC	REVISED -
PLOT SCALE = 40.0000' / in.	CHECKED - JMG	REVISED -
PLOT DATE = 4/1/2020	DATE - 4/1/20	REVISED -

**STATE OF ILLINOIS  
DEPARTMENT OF TRANSPORTATION**

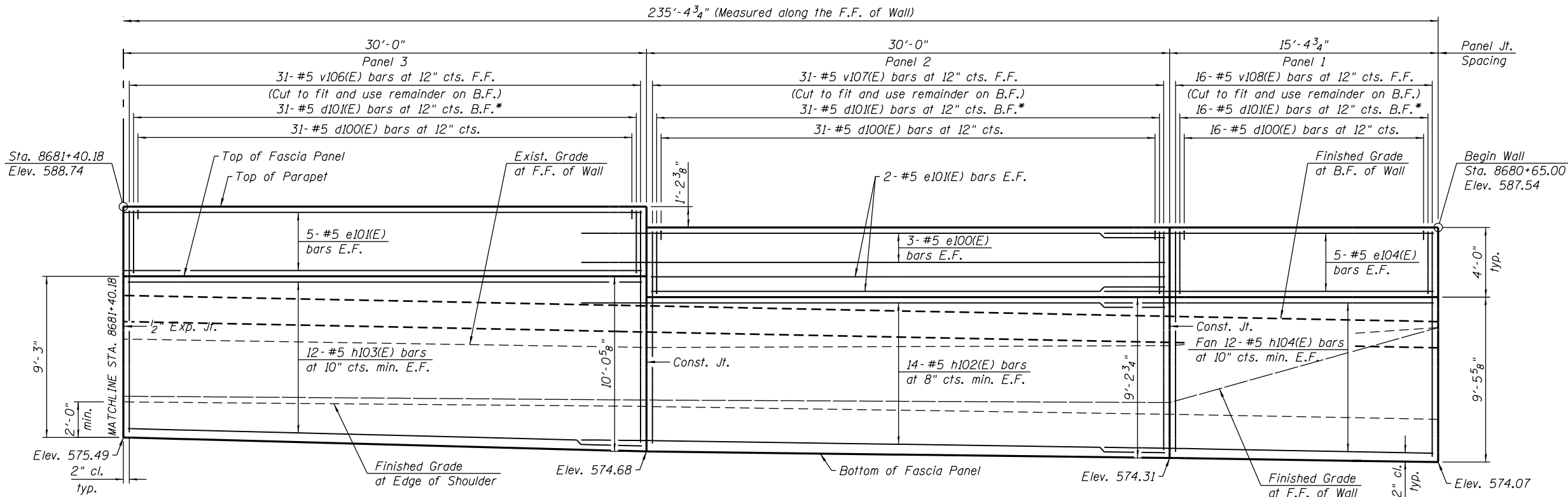
**EXISTING DRAINAGE AND UTILITIES PLAN  
I-90/94**

SCALE: 1"=20' SHEET 13 OF 18 SHEETS STA. 6162+50 TO STA. 6168+00

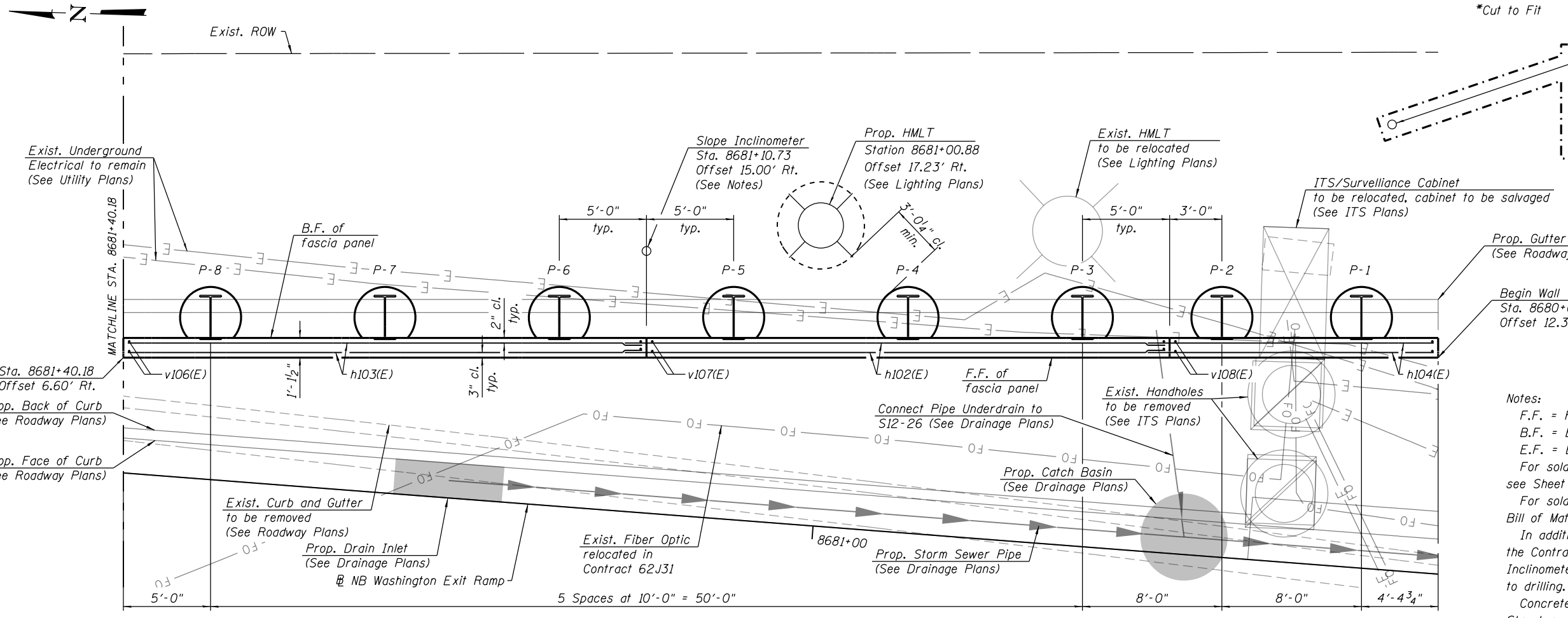
F.A.I. RTE.	SECTION	COUNTY	TOTAL SHEETS	SHEET NO.
90/94/290	2015-019R	COOK	2155	688
CONTRACT NO. 62A76				
ILLINOIS FED. AID PROJECT				

FILE PATH = p:\V\ECOM\NA-N\51\ecom\l\local\ECOM\_DS02\_NA\Documents\01\_Americas\Transportation\62269938\_Circle\Phase\I\000\_CAD\006\_Roadway\Sheets\62A76\_Sht-Drain-Ex-13.dgn

9:45:09 AM - p:\a\ecom\NA-AWS\aeocomonline\local4\ECOM\_DS02\_NA\Documents\01\Americas\Transportation\60269938\_Circle\Phase\_II\000\_CAD\008\_Structural\Structure\016821-62A76-S005-Plan\_Elevation3.dgn



**ELEVATION**  
(Looking East)



**PLAN**  
(Parapet not shown for clarity)

**Notes:**  
 F.F. = Front Face.  
 B.F. = Back Face.  
 E.F. = Each Face.  
 For soldier pile wall cross sections and details, see Sheet S3-06 of S3-12.  
 For soldier pile layout, sections and details and Bill of Material, see Sheet S3-07 of S3-12.  
 In addition to vibration and displacement monitoring, the Contractor shall monitor movements with Slope Inclinator. All inclinometers shall be installed prior to drilling. See special provisions for Slope Inclinator.  
 Concrete fascia panels shall be paid as Concrete Structures (Retaining Wall).  
 See sheet S3-08 for details of architectural reveals.

REV. 4-2-2020



USER NAME = wjcolletti	DESIGNED - KRS	REVISED - 4/1/2020 WJC
PLOT SCALE = NTS	CHECKED - DJG	REVISED -
PLOT DATE = 3/31/2020	DRAWN - LFP	REVISED -
	CHECKED - KRS	REVISED -

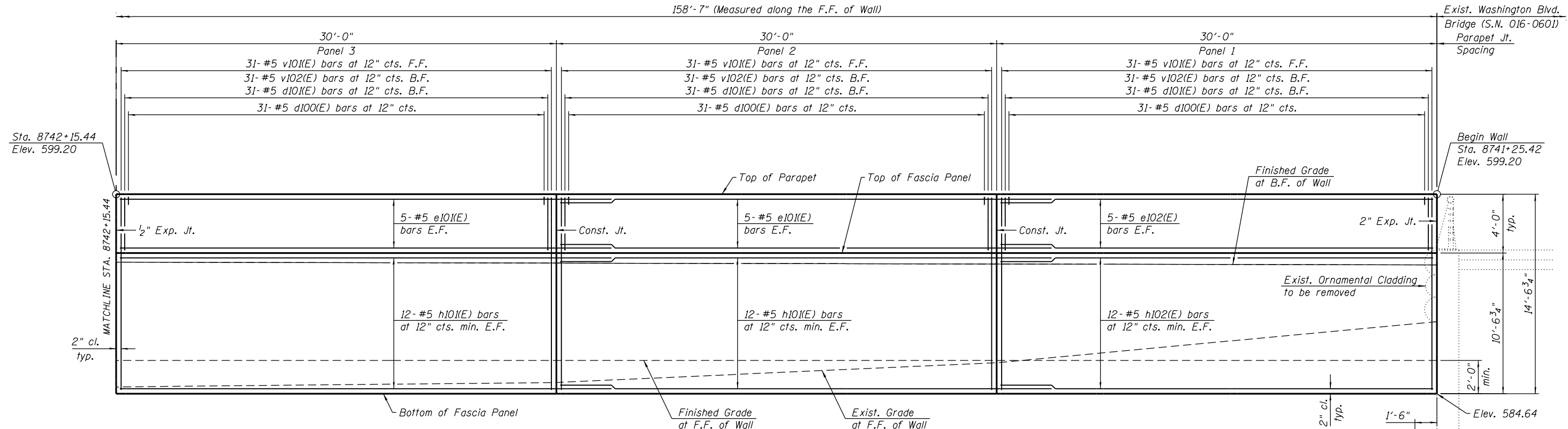
**STATE OF ILLINOIS**  
**DEPARTMENT OF TRANSPORTATION**

**PLAN AND ELEVATION 3**  
**RETAINING WALL 32 (STRUCTURE NO. 016-1821)**

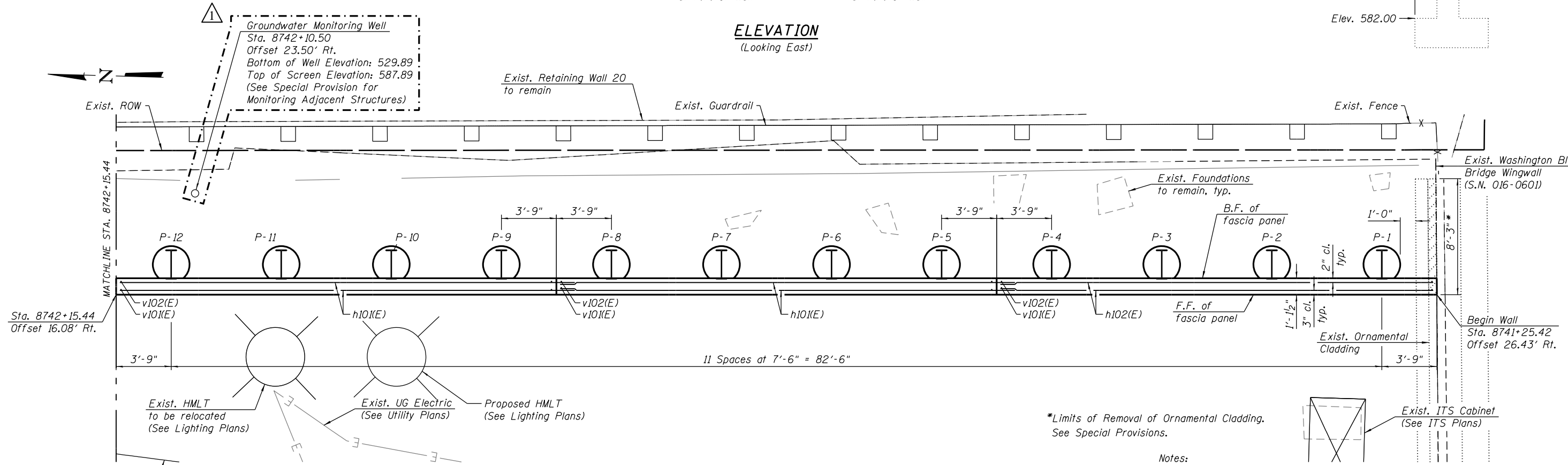
F.A.I. RTE.	SECTION	COUNTY	TOTAL SHEETS	SHEET NO.
90/94	2015-019R	COOK	2155	1219
CONTRACT NO.			62A76	
ILLINOIS FED. AID PROJECT				

SHEET NO. S3-05 OF S3-12 SHEETS

158'-7" (Measured along the F.F. of Wall)



**ELEVATION**  
(Looking East)



**PLAN**  
(Parapet not shown for clarity)

\*Limits of Removal of Ornamental Cladding.  
See Special Provisions.

Notes:  
For soldier pile wall cross sections and details, see Sheet S5-05 of S5-11.  
For soldier pile layout, sections and details and Bill of Material, see Sheet of S5-11.  
Concrete fascia panels shall be paid as Concrete Structures (Retaining Wall).  
See sheet S5-07 for details of architectural reveals.

REV. 4-2-2020

9:47:25 AM - p:\a\ecom-na-aws\ecomonline\local\ecom\502.MA\Documents\01\Americas\Transportation\60269938\_Circle\Phase\_II\000\_CAD\008\_Structure\Structure\016-Z051-Sheets\016-Z051-S004-Plan-Elevation2.dgn



USER NAME = wjcolletti	DESIGNED - KRS	REVISED - 4/1/2020 WJC
PLOT SCALE = NTS	CHECKED - DJG	REVISED -
PLOT DATE = 3/31/2020	DRAWN - LFP	REVISED -
	CHECKED - KRS	REVISED -

**STATE OF ILLINOIS**  
**DEPARTMENT OF TRANSPORTATION**

**PLAN AND ELEVATION 2**  
**RETAINING WALL 52 (STRUCTURE NO. 016-Z051)**

SHEET NO. S5-04 OF S5-11 SHEETS

F.A.I. RTE. 90/94	SECTION 2015-019R	COUNTY COOK	TOTAL SHEETS 2155	SHEET NO. 1249
ILLINOIS FED. AID PROJECT			CONTRACT NO. 62A76	