

172

STATE OF ILLINOIS
DEPARTMENT OF TRANSPORTATION

F.A.P. RTE.	SECTION	COUNTY	TOTAL SHEETS	SHEET NO.
827		WABASH	3	1

CONTRACT NO. 74938

D-97-014-20



FOR INDEX OF SHEETS, SEE SHEET NO. 2

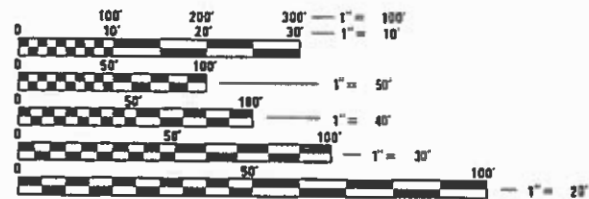
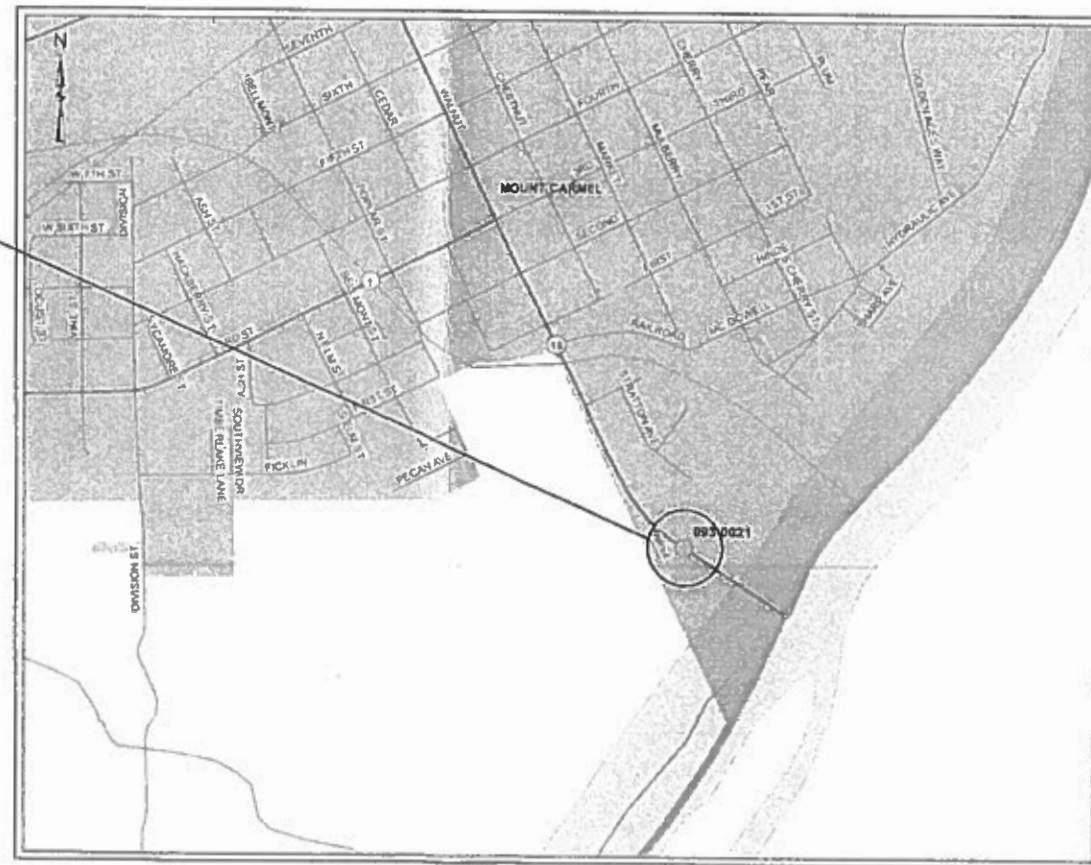
PROPOSED HIGHWAY PLANS

F.A.P. ROUTE 827 (ILL 15)
SECTION D7 BRIDGE CLEANING 2020-1
PROJECT NHPP-JVCS(904)
BRIDGE CLEANING
WABASH COUNTY

ADT = 7,850 (2017)

C-97-014-20

S.N. 093-0021



FULL SIZE PLANS HAVE BEEN PREPARED USING STANDARD ENGINEERING SCALES. REDUCED SIZED PLANS WILL NOT CONFORM TO STANDARD SCALES. IN MAKING MEASUREMENTS ON REDUCED PLANS, THE ABOVE SCALES MAY BE USED.

J.U.L.I.E.
JOINT UTILITY LOCATION INFORMATION FOR EXCAVATORS
1-800-892-0123
OR 811

PROJECT ENGINEER: TOM RONAN
PROJECT MANAGER: TOM RONAN
PHONE: (217) 342-8320
CONTRACT NO. 74938

PROJECT LENGTH = 2877.7 FT. = 0.54 MILE

STATE OF ILLINOIS
DEPARTMENT OF TRANSPORTATION

SUBMITTED DECEMBER 12, 2019

Jeffrey P. Myer
REGIONAL ENGINEER

Jan 31, 2020
ENGINEER OF DESIGN AND ENVIRONMENT

Jan 31, 2020
DIRECTOR OF HIGHWAYS PROJECT IMPLEMENTATION

PRINTED BY THE AUTHORITY
OF THE STATE OF ILLINOIS

INDEX OF SHEETS

SHEET NO.	ITEM
1	COVER SHEET
2	INDEX OF SHEETS & HIGHWAY STANDARDS
3	SUMMARY OF QUANTITIES

THE FOLLOWING STANDARDS ARE A PART OF THESE PLANS AND ARE INCLUDED AFTER SHEET NO. 4:

STD. NO.	DESCRIPTION
000001-07	STANDARD SYMBOLS, ABBREVIATIONS AND PATTERNS
001006	DECIMAL OF AN INCH AND OF A FOOT
701001-02	OFF-ROAD OPERATIONS, 2L,2W, 15' MINIMUM AWAY FROM PAVEMENT EDGE
701006-05	OFF-ROAD OPERATIONS, 2L,2W, 15' AWAY TO EDGE OF PAVEMENT
701201-05	LANE CLOSURE, 2L,2W, DAY ONLY, FOR SPEEDS \geq 45 MPH
701901-08	TRAFFIC CONTROL DEVICES

GENERAL NOTES

THE WORK INCLUDED IN THIS SECTION CONSISTS OF WASHING PARTS OF STRUCTURE NUMBER 093-0021, AS OUTLINED IN THE SPECIAL PROVISIONS, AND APPLYING CONCRETE SEALER TO THE ENTIRE TOP SURFACE OF THE BRIDGE DECK INCLUDING THE INSIDE FACES AND TOPS OF THE PARAPETS AND ANY OTHER WORK NECESSARY AS DETERMINED BY THE RESIDENT TO COMPLETE THE SECTION.

EXISTING PAVEMENT MARKINGS AND RAISED REFLECTIVE PAVEMENT MARKERS SHALL BE TEMPORARILY COVERED PRIOR TO APPLICATION OF THE CONCRETE SEALER TO PREVENT THE MATERIAL FROM BEING APPLIED TO THE MARKINGS. THE TEMPORARY COVERING SHALL BE REMOVED AFTER APPLICATION OF THE CONCRETE SEALER AND PRIOR TO OPENING TO TRAFFIC. COST IS INCLUDED WITH THE CONCRETE SEALER SPECIFIED.

WATER BASED CONCRETE SEALERS WILL NOT BE ALLOWED.

THE RESIDENT ENGINEER SHALL BE THE SOLE JUDGE CONCERNING THE CURING TIME FOR THE SEALER AND WHEN THE SEALED DECK CAN BE OPENED TO TRAFFIC.

MODEL: Default
 FILE: h:\mfc_p\pub\barroom.dwg
 I:\Illinois\gov\PI\DOT\Documents\DOT_Offices\District_7\Projects\74938\CAAD\data\CAD\sheets\ID74938-sht-gen-note.dgn

* D7 BRIDGE CLEANING 2020-1

USER NAME = steffenmk PLOT SCALE = 100.0000 ' / in. PLOT DATE = 12/12/2019	DESIGNED - DRAWN - CHECKED - DATE -	REVISED - REVISED - REVISED - REVISED -	STATE OF ILLINOIS DEPARTMENT OF TRANSPORTATION	INDEX OF SHEETS, HIGHWAY STANDARDS & GENERAL NOTES	F.A.P. RTE. 827	SECTION *	COUNTY WABASH	TOTAL SHEETS 3	SHEET NO. 2	CONTRACT NO. 74938 ILLINOIS FED. AID PROJECT
				SCALE:	SHEET 1 OF 1 SHEETS		STA.		TO STA.	

SUMMARY OF QUANTITIES			TOTAL QUANTITIES	CONSTRUCTION TYPE CODE	
CODE NO	ITEM	UNIT		0047 80% FED 20% STATE	047 100% INDIANA
59200101	BRIDGE WASHING NO. 1	EACH	1	0.5	0.5
67100100	MOBILIZATION	L SUM	1	0.5	0.5
70100450	TRAFFIC CONTROL AND PROTECTION, STANDARD	L SUM	1	0.5	0.5
	701201				
70107025	CHANGEABLE MESSAGE SIGN	CAL DA	28	14	14
X5870015	BRIDGE DECK CONCRETE SEALER	SQ FT	159224	79612	79612

MODEL: Default
FILE: M:\MSA5 - P\W\planroom.dwg
PROJECT: I:\Projects\174938\CADD\DATA\CAD\Drawings\174938-sh-500.dwg

REV. - MS

* D7 BRIDGE CLEANING 2020-1

USER NAME = steffennk	DESIGNED -	REVISED -
	DRAWN -	REVISED -
PLOT SCALE = 100.0000 ' / in.	CHECKED -	REVISED -
PLOT DATE = 12/12/2019	DATE -	REVISED -

**STATE OF ILLINOIS
DEPARTMENT OF TRANSPORTATION**

SUMMARY OF QUANTITIES

SCALE: SHEET 1 OF 1 SHEETS STA. TO STA.

F.A.P. RTE.	SECTION	COUNTY	TOTAL SHEETS	SHEET NO.
827	*	WABASH	3	3
			CONTRACT NO. 74938	
ILLINOIS FED. AID PROJECT				