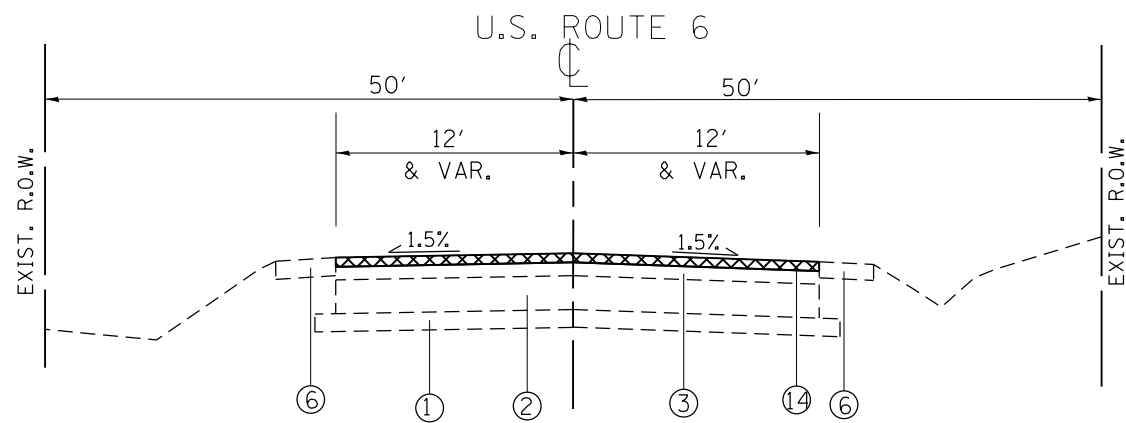


SUMMARY OF QUANTITIES			CONSTRUCTION TYPE CODE						
CODE NO	ITEM	UNIT	TOTAL QUANTITIES	0004	0021	0021	0021	0021	0021
				FED 80% ST 20% CMAQ	FED 80% ST 10% JOL. 10% CMAQ	NEW LENOX 100% EVP	FED 80% ST 10% N. LEN 5% WILL 5%	JOLIET 50% N. LENOX 50%	FED 80% ST 20% STP
40600290	BITUMINOUS MATERIALS (TACK COAT)	POUND	7750	7750					
40600400	MIXTURE FOR CRACKS, JOINTS, AND FLANGEWAYS	TON	24	24					
40600982	HOT-MIX ASPHALT SURFACE REMOVAL - BUTT JOINT	SO YD	440	440					
40603080	HOT-MIX ASPHALT BINDER COURSE, IL-19.0, N50	TON	30.4	30.4					
40603090	HOT-MIX ASPHALT BINDER COURSE, IL-19.0, N90	TON	1010	1010					
40604060	HOT-MIX ASPHALT SURFACE COURSE, IL-9.5, MIX "D", N50	TON	35.2	35.2					
40604172	POLYMERIZED HOT-MIX ASPHALT SURFACE COURSE, IL-9.5, MIX "E", N70	TON	816	816					
42001300	PROTECTIVE COAT	SO YD	937	805	132				
42400200	PORTLAND CEMENT CONCRETE SIDEWALK 5 INCH	SO FT	3760	2570	1190				
* 42400800	DETECTABLE WARNINGS	SO FT	142	142					
44000100	PAVEMENT REMOVAL	SO YD	217	217					
44000151	HOT-MIX ASPHALT SURFACE REMOVAL, 1/2"	SO YD	8010	8010					
44000200	DRIVEWAY PAVEMENT REMOVAL	SO YD	70.3	70.3					

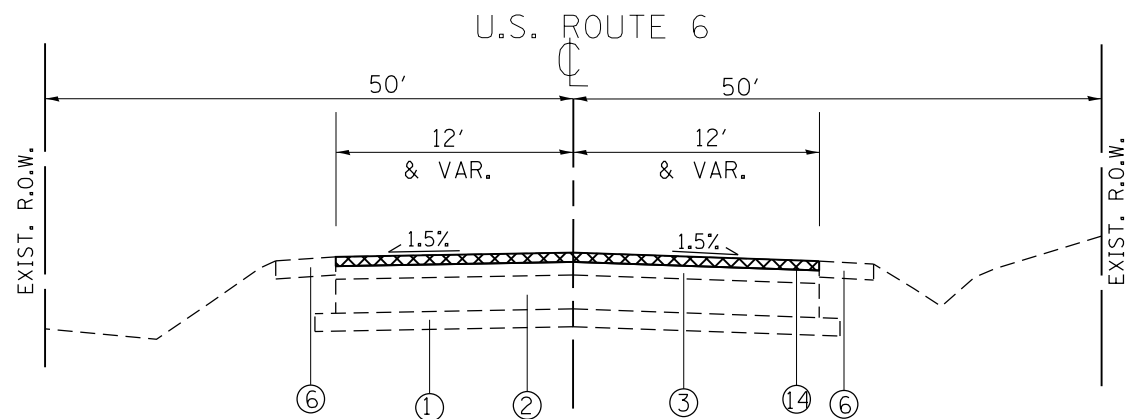
SUMMARY OF QUANTITIES			CONSTRUCTION TYPE CODE						
CODE NO	ITEM	UNIT	TOTAL QUANTITIES	0004	0021	0021	0021	0021	0021
				FED 80% ST 20% CMAQ	FED 80% ST 10% JOL. 10% CMAQ	NEW LENOX 100% EVP	FED 80% ST 10% N. LEN 5% WILL 5%	JOLIET 50% N. LENOX 50%	FED 80% ST 20% STP
44000500	COMBINATION CURB AND GUTTER REMOVAL	FOOT	1490	1490					
44201723	CLASS D PATCHES, TYPE IV, 6 INCH	SO YD	122	122					
44201823	CLASS D PATCHES, TYPE I, 15 INCH	SO YD	5.96	5.96					
44201827	CLASS D PATCHES, TYPE II, 15 INCH	SO YD	62	62					
44201833	CLASS D PATCHES, TYPE IV, 15 INCH	SO YD	90.1	90.1					
44300200	STRIP REFLECTIVE CRACK CONTROL TREATMENT	FOOT	5560	5560					
48102100	AGGREGATE WEDGE SHOULDER, TYPE B	TON	56.1	56.1					
48203022	HOT-MIX ASPHALT SHOULDERS, 6 1/4"	SO YD	2430	2430					
50100100	REMOVAL OF EXISTING STRUCTURES	EACH	1						1
50102400	CONCRETE REMOVAL	CU YD	13.6						13.6
50105220	PIPE CULVERT REMOVAL	FOOT	162	162					
50200100	STRUCTURE EXCAVATION	CU YD	13.7						13.7
50800205	REINFORCEMENT BARS, EPOXY COATED	POUND	4440						4440
54002020	EXPANSION BOLTS 3/4 INCH	EACH	24						24
54003000	CONCRETE BOX CULVERTS	CU YD	31.4						31.4

△ REV. 4-1-2020

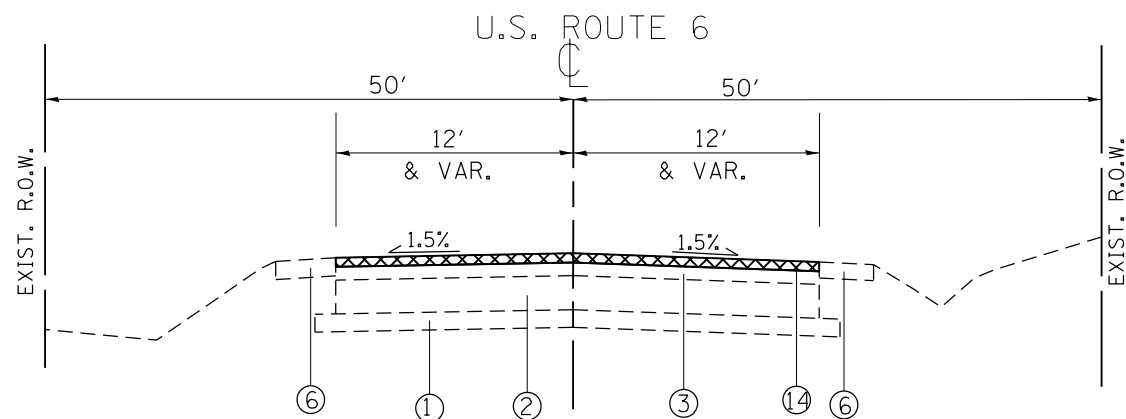
FILE NAME =	USER NAME = ledznorm	DESIGNED -	REVISED -	<b>STATE OF ILLINOIS DEPARTMENT OF TRANSPORTATION</b>	<b>U.S. ROUTE 6 AT GOUGAR ROAD SUMMARY OF QUANTITIES</b>	F.A.U. RTE.	SECTION	COUNTY	TOTAL SHEETS	SHEET NO.
pw:\planroom\dtd\illinois\gov\PI001\Documents\DOT	Office\District\Projects\PI03112\CAD\Design\PI03112-st	DRAWN -	REVISED -			297	33N-12(2)	WILL	100	5
PLOT SCALE = 100,000' / 1in.	CHECKED -	REVISED -	CONTRACT NO.							
PLOT DATE = 3/4/2020	DATE -	REVISED -	SCALE: SHEET NO. OF SHEETS STA. TO STA.							



**TYPICAL EXISTING SECTION  
U.S. ROUTE 6  
FROM STA 193+00 TO STA 200+00**



**TYPICAL EXISTING SECTION  
U.S. ROUTE 6  
FROM STA 200+00 TO STA 203+00**

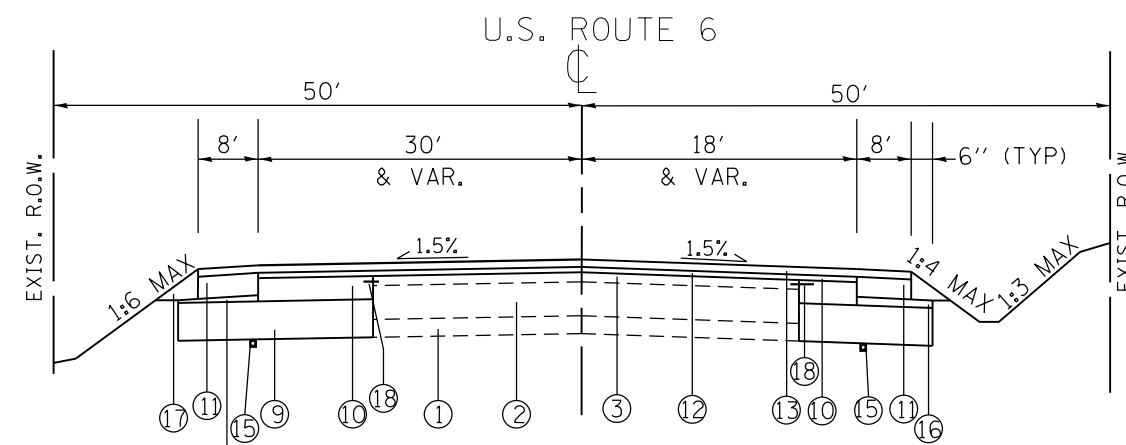


**TYPICAL EXISTING SECTION  
U.S. ROUTE 6  
FROM STA 203+00 TO STA 209+00**

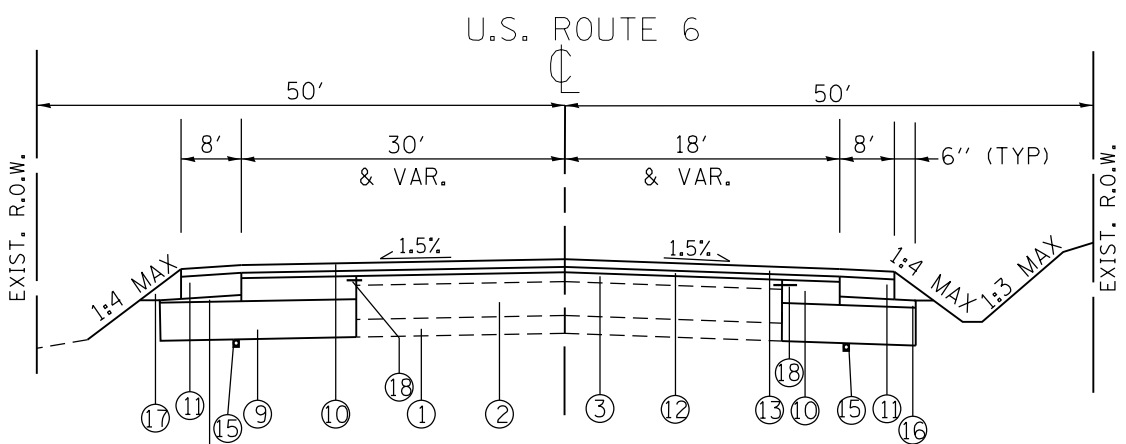
HOT-MIX ASPHALT MIXTURE REQUIREMENTS		QUALITY MANAGEMENT PROGRAM (OMP)
MIXTURE TYPE	AIR VOIDS (%) @ NDES	
<b>US-6 &amp; GOUGAR RD RESURFACING AND WIDENING</b>		
POLYMERIZED HMA SURFACE COURSE MIX "E", N70, (IL 9.5mm), 1 3/4"	4% @ 70 GYR.	OC/OA
HMA BINDER COURSE IL-19.0, N90, 2 1/4"	4% @ 90 GYR.	OC/OA
HMA BASE COURSE WIDENING (HMA BINDER IL-19.0, 6" FOR WIDTHS LESS OR EQUAL TO 6 FT)	4% @ 90 GYR.	OC/OA
HMA BASE COURSE (HMA BINDER IL-19.0, 6" FOR WIDTHS GREATER THAN 6 FT)	4% @ 90 GYR.	OC/OA
<b>US-6 SHOULDER PAVEMENT</b>		
POLYMERIZED HMA SURFACE COURSE MIX "E", N70, (IL 9.5mm), 1 3/4"	4% @ 70 GYR.	OC/OA
HMA SHOULDER (HMA BINDER IL19.0, 6 1/4")	4% @ 90 GYR.	OC/OA
<b>US-6 &amp; GOUGAR RD TEMPORARY PAVEMENT</b>		
HOT-MIX ASPHALT BINDER COURSE, IL-19.0, N70, 8"	4% @ 70 GYR.	OC/OA
<b>PATCHING</b>		
CLASS D PATCHES 6" & 15" (HMA BINDER IL-19 MM)	4% @ 70 GYR.	OC/OA
<b>DRIVEWAYS</b>		
HMA SURFACE MIX D, N50 (IL-9.5MM), 2" (F.E. & P.E.)	4% @ 50 GYR.	OC/OA
HMA BASE COURSE, 6" (HMA BINDER IL-19.0, N50 (P.E.))	4% @ 50 GYR.	OC/OA
<b>BIKE TRAIL</b>		
HMA SURFACE MIX D, N50 (IL-9.5MM), 1 1/2"	4% @ 50 GYR.	OC/OA
HMA BINDER COURSE IL-19.0, N50, 2 1/2"	4% @ 50 GYR.	OC/OA
OMP DESIGNATION: QUALITY CONTROL/QUALITY ASSURANCE (OC/OA) QUALITY CONTROL FOR PERFORMANCE (OCP)		

NOTE:  
SEE NEXT SHEET FOR HMA CHART NOTES

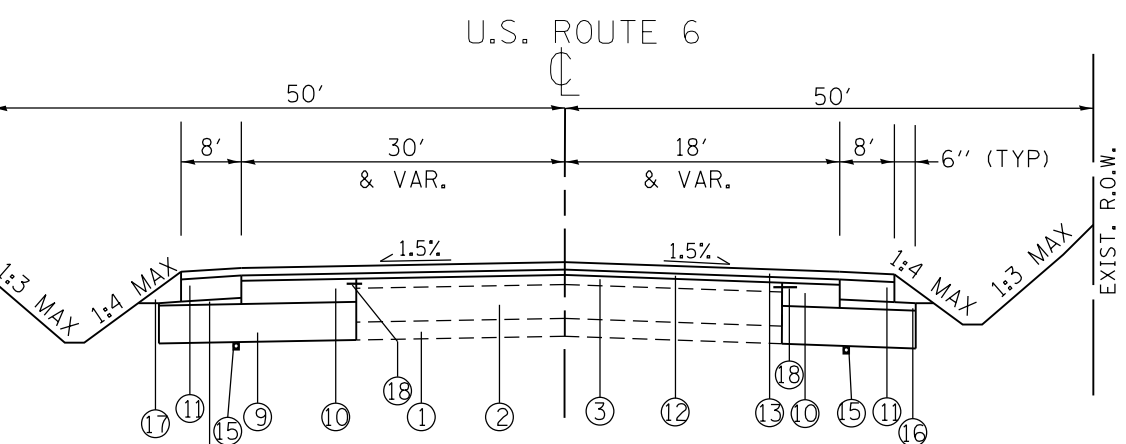
- ① EXIST AGGREGATE SUBGRADE
- ② EXIST PCC PAVEMENT (9" & VAR)
- ③ EXIST HMA PAVEMENT (6" & VAR)
- ④ EXIST HMA PAVEMENT (8")
- ⑤ EXIST HMA PAVEMENT (4")
- ⑥ EXIST HMA SHOULDERS
- ⑦ EXIST B-6.12 CURB AND GUTTER
- ⑧ PROP. B-6.12 CURB AND GUTTER
- ⑨ PROP. AGGREGATE SUBGRADE IMPROVEMENT, (12")
- ⑩ PROP. HMA BASE COURSE, (6") OR HMA BASE COURSE WIDENING (6")
- ⑪ PROP. HMA SHOULDER BINDER (6 1/4")
- ⑫ PROP. HMA BINDER COURSE IL-19.0, N90, (2 1/4")
- ⑬ PROP. POLYMERIZED HMA SURFACE COURSE, (1 3/4")
- ⑭ PROP. HMA MILLING, (1 1/2")
- ⑮ PROP. PIPE UNDERDRAIN, TYPE 2, 4"
- ⑯ PROP. SUBBASE AGGREGATE TYPE C
- ⑰ PROP. AGGREGATE WEDGE SHOULDER TYPE B
- ⑱ STRIP REFLECTIVE CRACK CONTROL TREATMENT



**TYPICAL PROPOSED SECTION  
U.S. ROUTE 6  
FROM STA 193+00 TO STA 200+00**



**TYPICAL PROPOSED SECTION  
U.S. ROUTE 6  
FROM STA 200+00 TO STA 203+00**



**TYPICAL PROPOSED SECTION  
U.S. ROUTE 6  
FROM STA 203+00 TO STA 209+00**

FILE NAME =	USER NAME = ldezma	DESIGNED -	REVISED - RL 3/31/2020
pw:\planroom.dot.illinois.gov\PIDOT\Documents\DOT Offices\District 1\Projects\P103112\DRAWING\Design\P103112-shr-typical.dgn		CHECKED -	REVISED -
Default	PLOT SCALE = 100.0000' / in.	DATE -	REVISED -
	PLOT DATE = 4/7/2020		

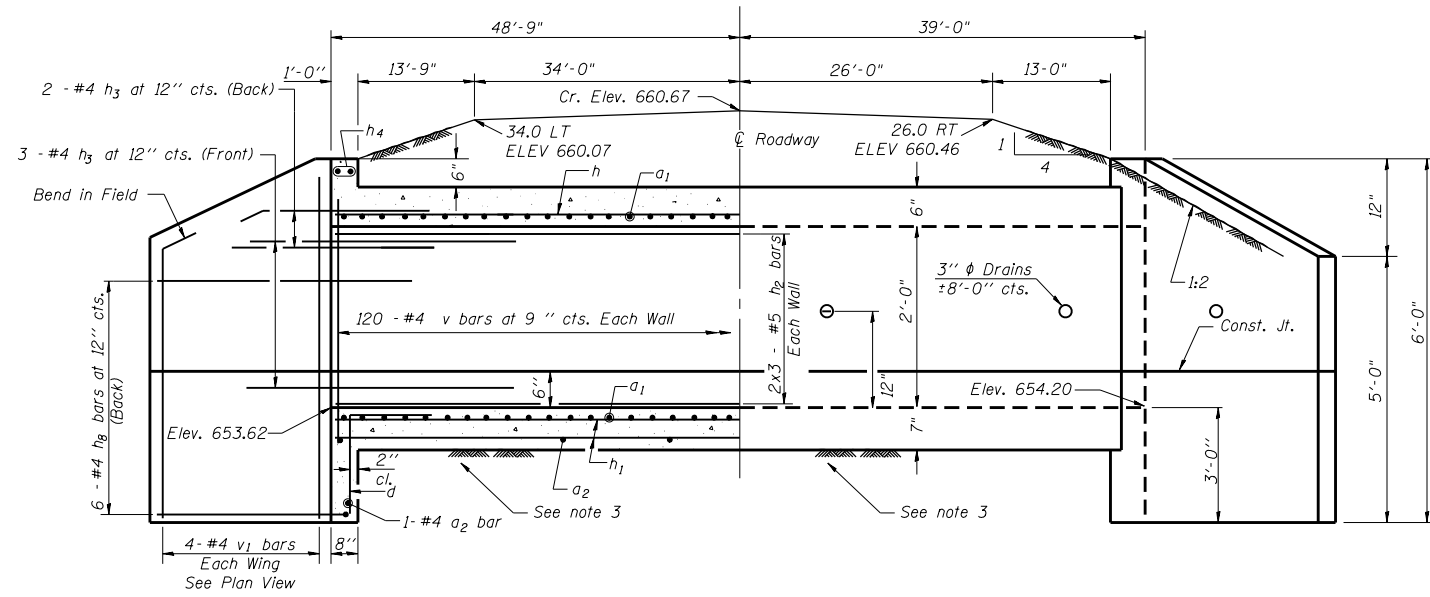
**STATE OF ILLINOIS  
DEPARTMENT OF TRANSPORTATION**

**EXISTING TYPICAL SECTIONS  
US ROUTE 6 AT GOUGAR ROAD**

SCALE: 1" = 50' SHEET OF SHEETS STA. TO STA.

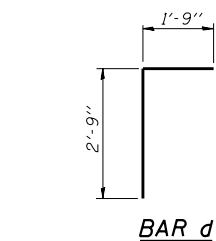
F.A.U. RTE.	SECTION	COUNTY	TOTAL SHEETS	SHEET NO.
297	33N-2(12)	WILL	100	12
CONTRACT NO. 60V40			ILLINOIS FED. AID PROJECT	

REVISED 4/7/2020

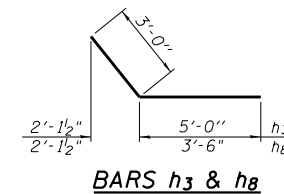


HALF LONG. SECTION

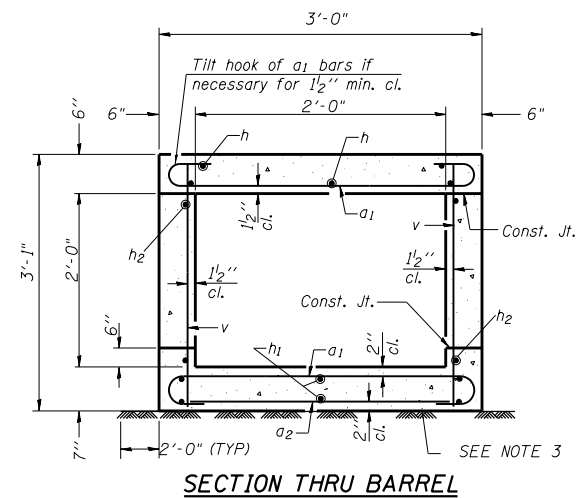
HALF ELEVATION



BAR d



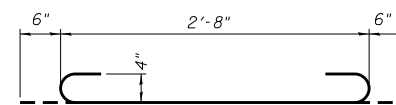
BARS h3 & h8



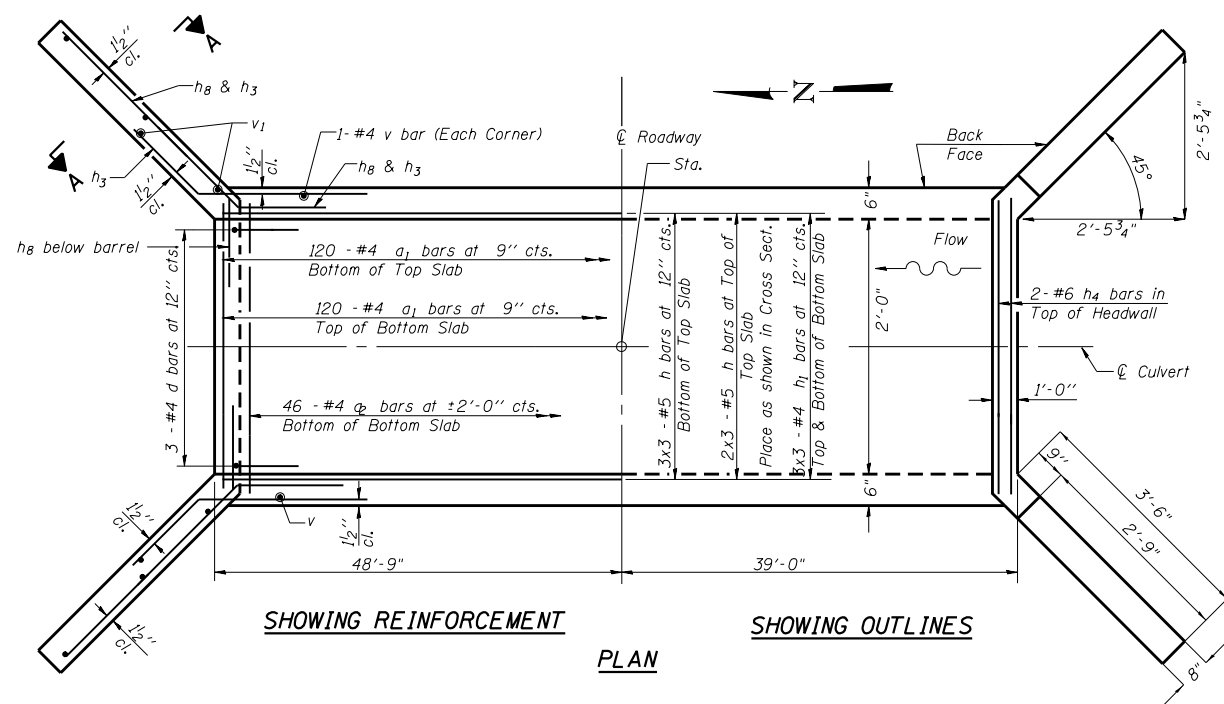
SECTION THRU BARREL

MIN. BAR LAP

- #4 - 1'-4"
- #5 - 1'-8"



BAR a1



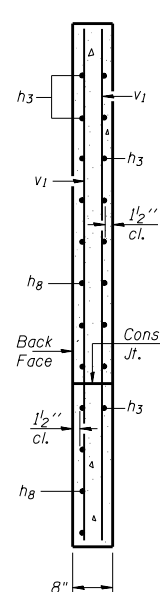
SHOWING REINFORCEMENT

SHOWING OUTLINES

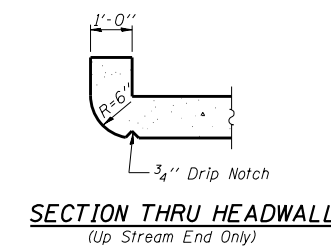
PLAN

NOTES

- A distance of half the length of the wingwall but not less than six feet of the barrel shall be poured monolithically with the wingwalls.
- Reinforcement bars shall conform to the requirements of ASTM A 706 Gr 60. See Special Provisions.
- Aggregate gradation CS-01 meeting requirements of AGGREGATE SUBGRADE IMPROVEMENT (D1) special provisions. Top 3 inches shall be virgin aggregate meeting gradation requirements of CA-6
- Bars indicated thus 12 x 4 #5 etc. indicates 12 lines of bars with 4 lengths per line.



SECTION A-A



SECTION THRU HEADWALL  
(Up Stream End Only)

DESIGN STRESSES

fy = 60,000 psi  
f'c = 3,500 psi

LOADING HS 20-44 & ALT.

BILL OF MATERIAL

Bar	No.	Size	Length	Shape
a1	240	#4	3'-8"	U
a2	46	#4	2'-8"	—
d	6	#4	4'-6"	L
h	5	#5	30'-8"	—
h1	6	#4	30'-5"	—
h2	4	#5	30'-8"	—
h3	20	#4	8'-0"	—
h4	4	#6	2'-8"	—
h8	24	#4	6'-6"	—
v	244	#4	2'-9"	—
v1	16	#4	5'-8"	—
Agg. Subgrade Impr.				Cu. Yd. 24.8
Concrete Removal				Cu. Yd. 10.2
Structure Excavation				Cu. Yd. 10.8
Concrete Box Culverts				Cu. Yd. 19.3
Reinforcement Bars				Pound 2650

FILE NAME =	USER NAME = ledezmar	DESIGNED -	REVISED - RL 3/31/2020
pw:\planroom.dot.illinois.gov\PI0312\Documents\DOT Offices\District 1\Projects\PI0312\Drawings\Design\PI0312-sht-details.dgn		CHECKED -	REVISED -
Default	PLOT DATE = 3/31/2020	DATE -	REVISED -

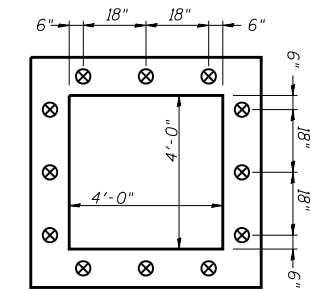
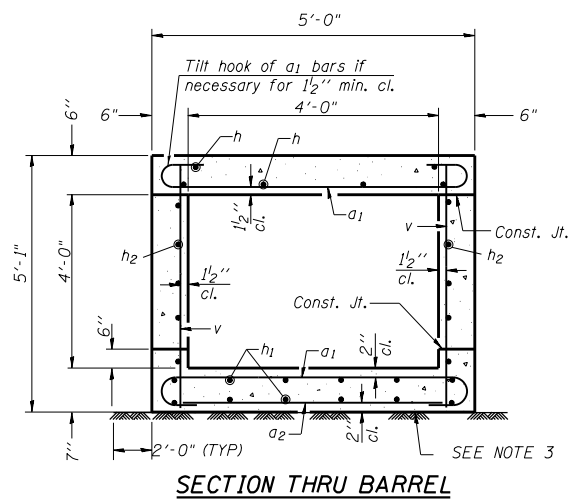
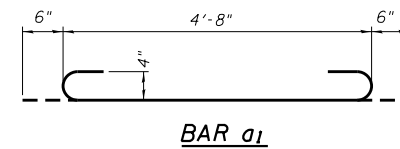
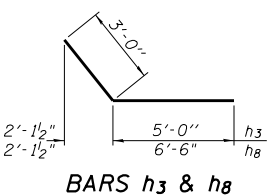
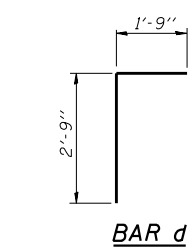
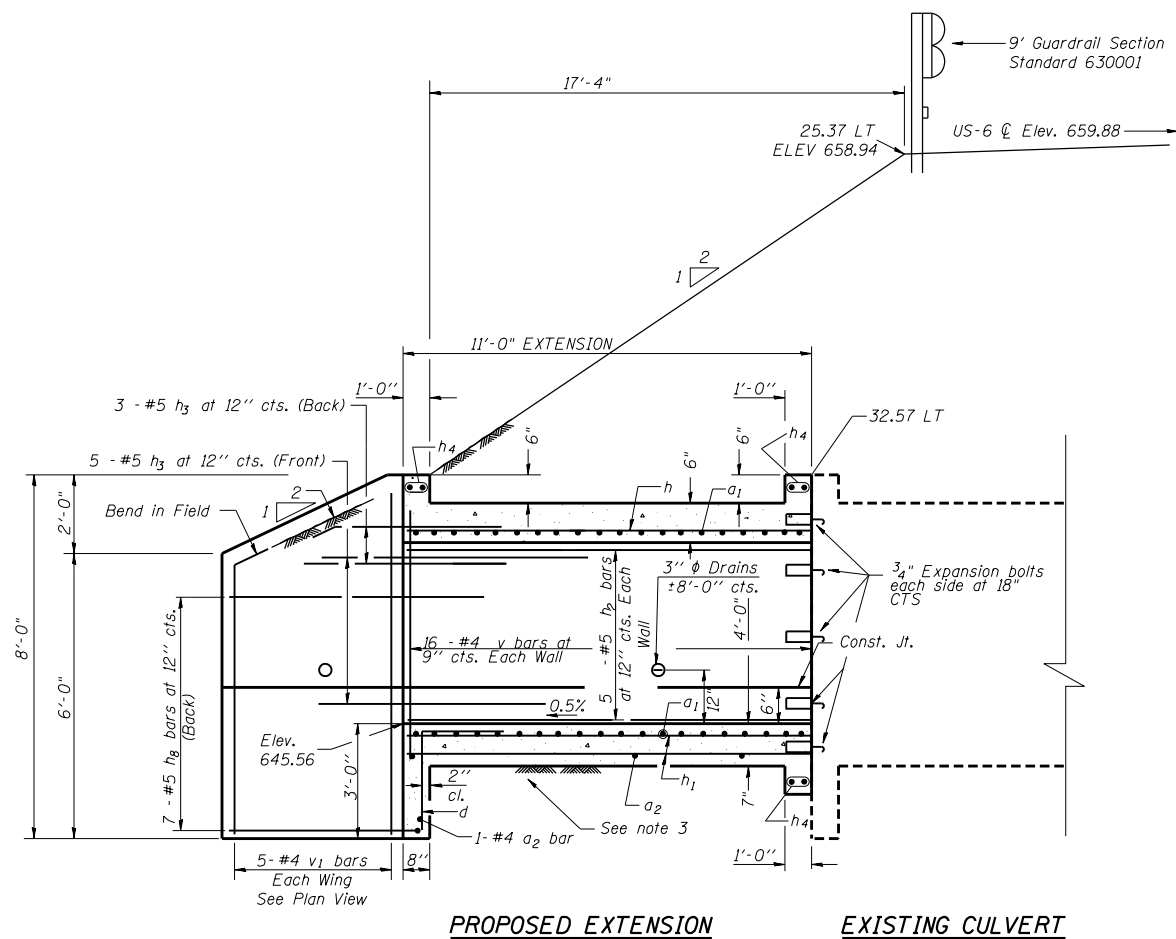
STATE OF ILLINOIS  
DEPARTMENT OF TRANSPORTATION

U.S. ROUTE 6 AT GOUGAR ROAD  
PROPOSED CULVERT AT STA 201 + 43

SCALE: SHEET OF SHEETS STA. TO STA.

F.A.U. RT.E.	SECTION	COUNTY	TOTAL SHEETS	SHEET NO.
297	33N-2(12)	WILL	100	76
CONTRACT NO. 60V40			ILLINOIS FED. AID PROJECT	

REV. 4-1-2020



SECTION THRU BARREL  
Showing Expansion Bolts

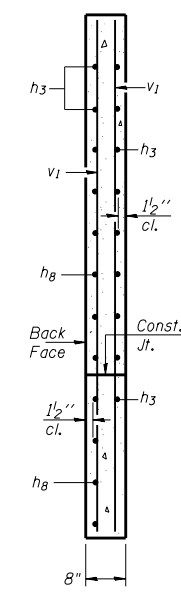
EXPANSION BOLTS SHALL CONSIST OF SELF DRILLING EXPANSION SHIELDS AND 3/4"  $\phi$  HOOKED BOLTS.  
HOOKED BOLTS SHALL EXTEND A MINIMUM OF 9" INTO NEW CONCRETE

PROPOSED EXTENSION      EXISTING CULVERT

**DESIGN STRESSES**

$f_y = 60,000 \text{ psi}$   
 $f'_c = 3,500 \text{ psi}$

**LOADING HS 20-44 & ALT.**



SECTION A-A

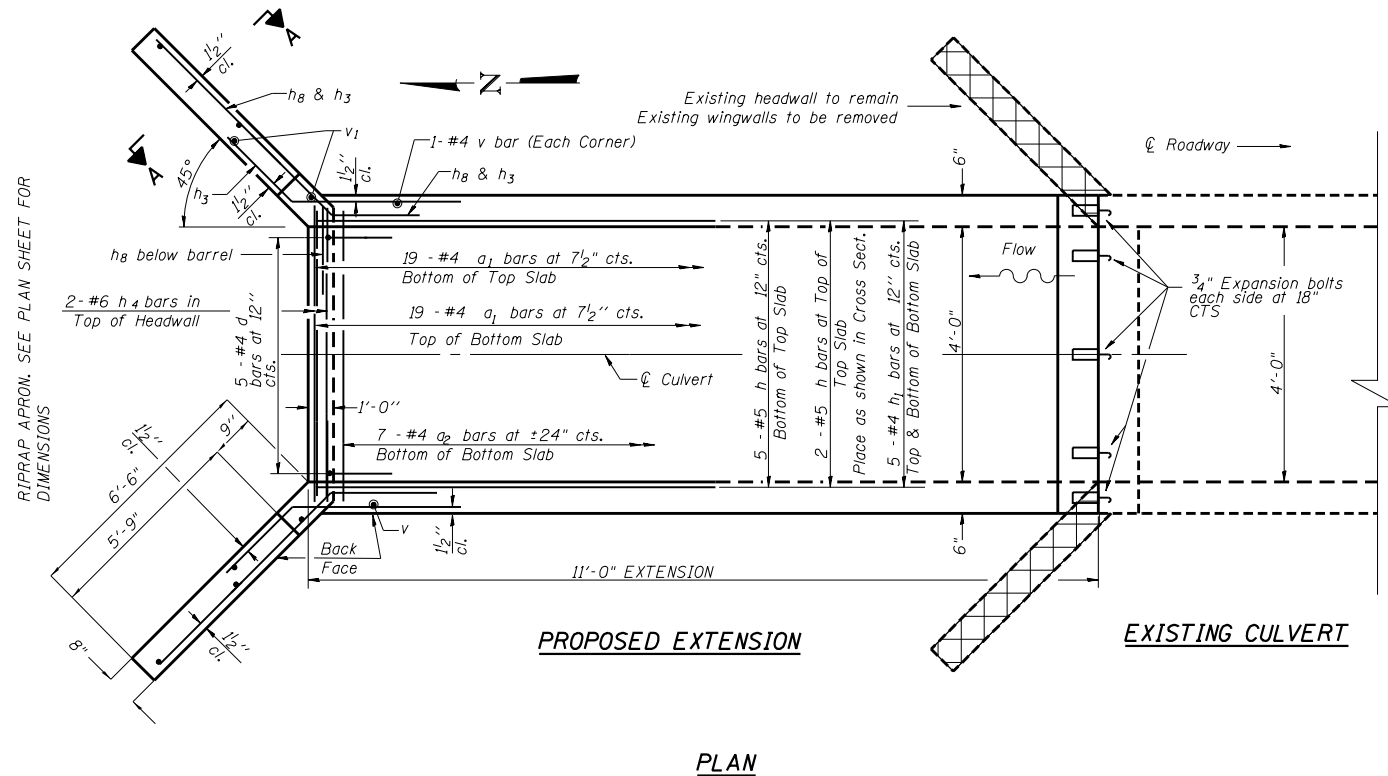
**BILL OF MATERIAL**

Bar	No.	Size	Length	Shape
a1	38	#4	5'-8"	U
a2	7	#4	4'-8"	—
d	5	#4	4'-6"	L
h	7	#5	10'-10"	—
h1	10	#4	10'-10"	—
h2	10	#5	10'-10"	—
h3	16	#5	8'-0"	—
h4	6	#6	4'-9"	—
h8	14	#5	9'-6"	—
v	34	#4	4'-9"	—
v1	10	#4	7'-8"	—
Agg. Subgrade Impr.				Cu. Yd. 10.9
Expansion Bolts 3/4"				EA 12
Concrete Removal				Cu. Yd. 1.7
Structure Excavation				Cu. Yd. 6.2
Concrete Box Culverts				Cu. Yd. 6.2
Reinforcement Bars				Pound 920

**NOTES**

- A distance not less than six feet of the barrel shall be poured monolithically with the wingwalls.
- Reinforcement bars shall conform to the requirements of ASTM A 706 Gr 60.
- Aggregate gradation CS-01 meeting requirements of AGGREGATE SUBGRADE IMPROVEMENT (DI) special provisions. Top 3 inches shall be virgin aggregate meeting gradation requirements of CA-6. A minimum of 36" of AGGREGATE SUBGRADE IMPROVEMENT shall be used as bedding for the barrel in this extension.

**LEGEND**



PLAN

FILE NAME =	USER NAME = ledezmar	DESIGNED -	REVISED - RL 3/31/2020
pw:\planroom.dot\illinois.gov\PIWOT\Documents\DOT Offices\District 1\Projects\PI03112\Drawings\Design\PI03112-sht-details.dgn		CHECKED -	REVISED -
Default	PLOT DATE = 3/31/2020	DATE -	REVISED -

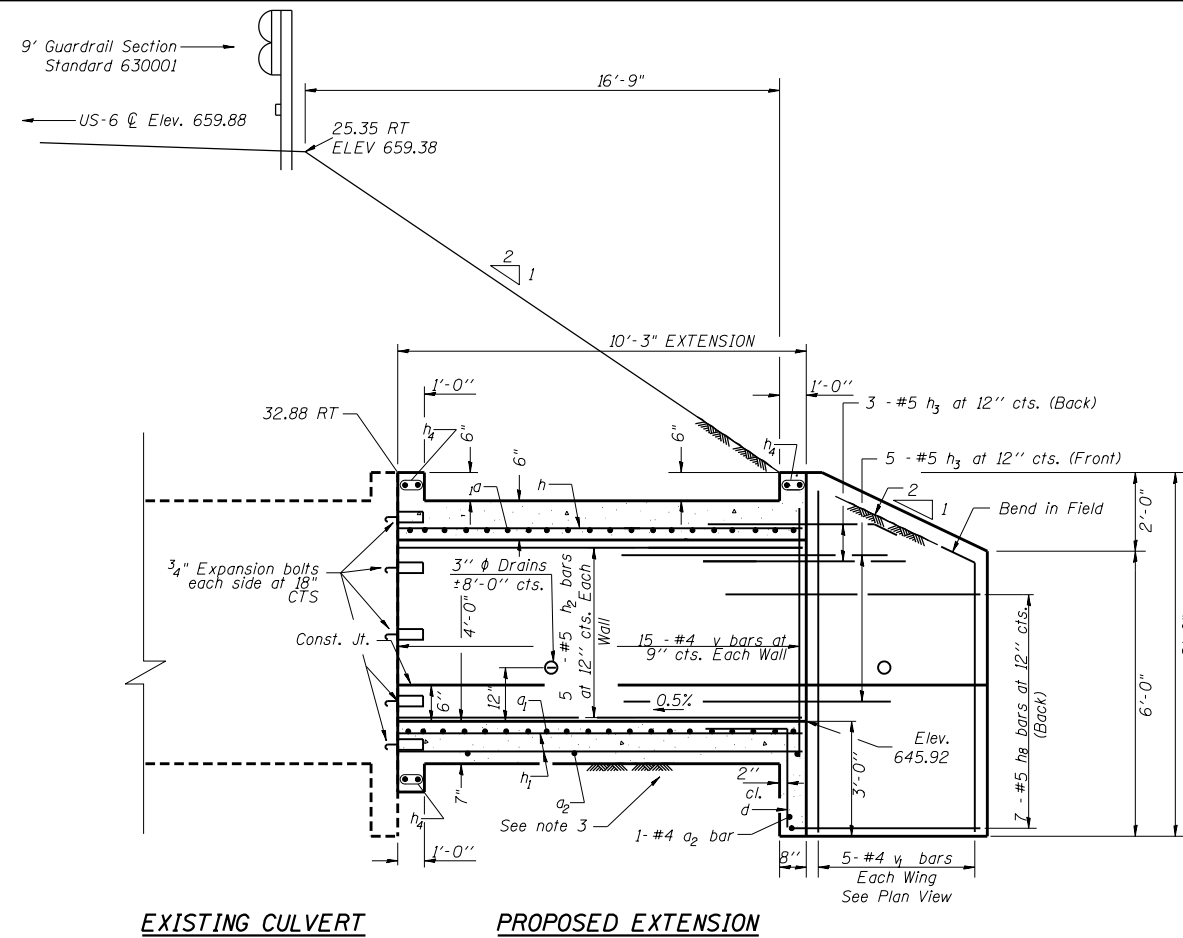
STATE OF ILLINOIS  
DEPARTMENT OF TRANSPORTATION

U.S. ROUTE 6 AT GOUGAR ROAD  
CULVERT EXTENSION AT STA 207+00 LT

SCALE: SHEET OF SHEETS STA. TO STA.

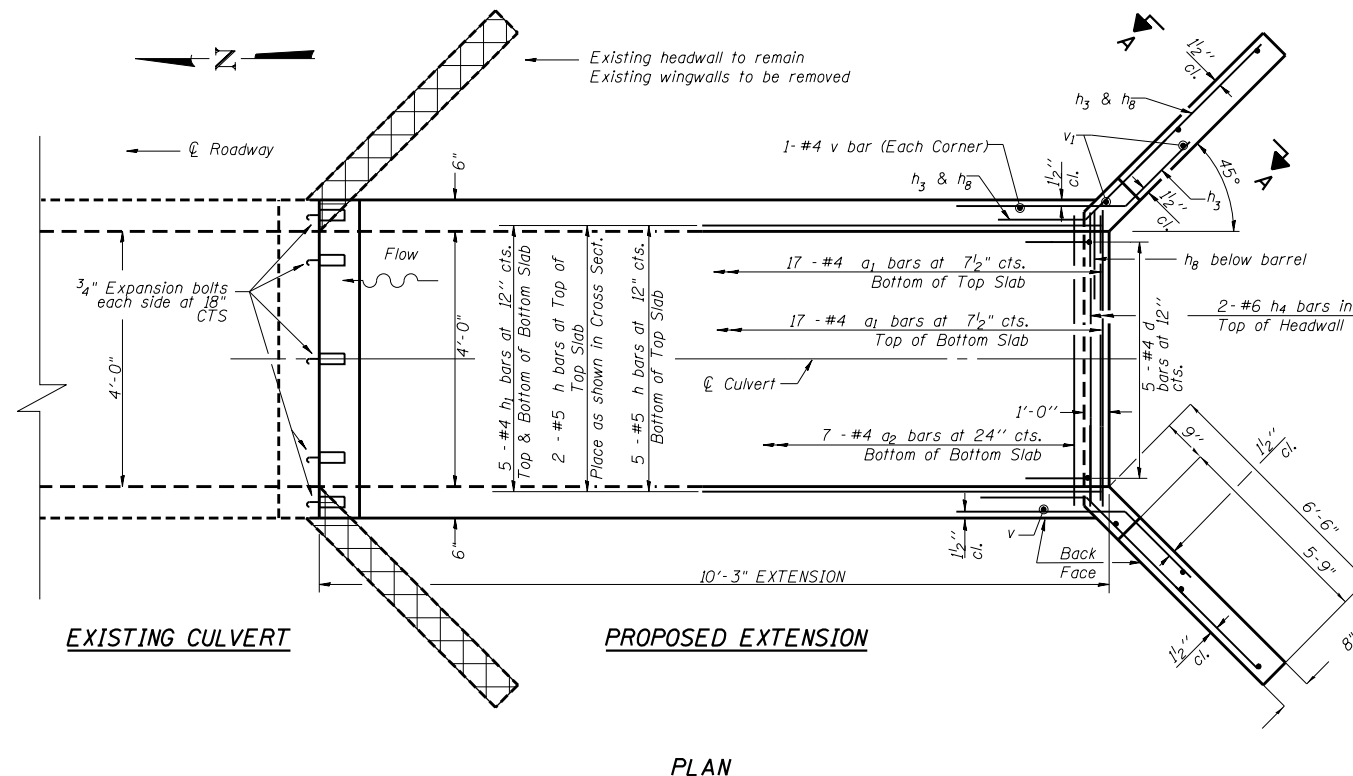
F.A.U. RTE. 297	SECTION 33N-2112)	COUNTY WILL	TOTAL SHEETS 100	SHEET NO. 77
CONTRACT NO. 60V40			ILLINOIS FED. AID PROJECT	

REV. 4-1-2020



EXISTING CULVERT

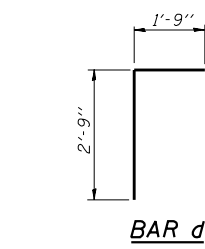
PROPOSED EXTENSION



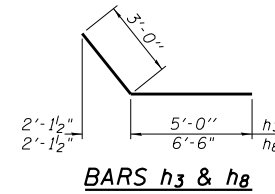
EXISTING CULVERT

PROPOSED EXTENSION

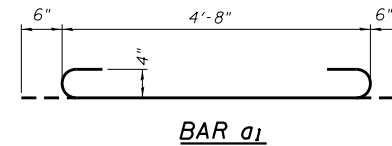
PLAN



BAR d



BARS h3 & h8

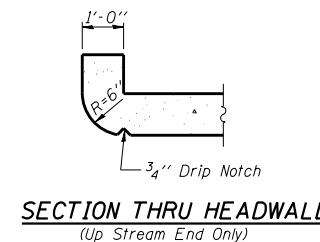


BAR a1

DESIGN STRESSES

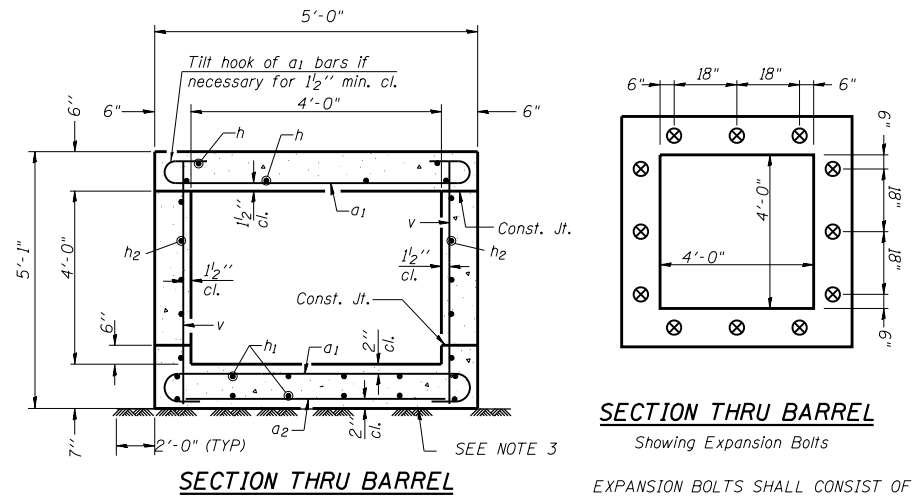
$T_y = 60,000 \text{ psi}$   
 $f'_c = 3,500 \text{ psi}$

LOADING HS 20-44 & ALT.



SECTION THRU HEADWALL  
(Up Stream End Only)

LEGEND



SECTION THRU BARREL

SECTION THRU BARREL

Showing Expansion Bolts

EXPANSION BOLTS SHALL CONSIST OF SELF DRILLING EXPANSION SHIELDS AND 3/4"  $\phi$  HOOKED BOLTS.

HOOKED BOLTS SHALL EXTEND A MINIMUM OF 9" INTO NEW CONCRETE

BILL OF MATERIAL

Bar	No.	Size	Length	Shape
a1	34	#4	5'-8"	C
a2	6	#4	4'-8"	—
d	5	#4	4'-6"	U
h	7	#5	10'-0"	—
h1	10	#4	10'-0"	—
h2	10	#5	10'-0"	—
h3	16	#5	8'-0"	—
h4	6	#6	4'-9"	—
h8	14	#5	9'-6"	—
v	32	#4	4'-9"	—
v1	10	#4	7'-8"	—
Agg. Subgrade Impr.		Cu. Yd.	3.7	
Expansion Bolts 3/4"		EA	12	
Concrete Removal		Cu. Yd.	1.7	
Structure Excavation		Cu. Yd.	6.2	
Concrete Box Culverts		Cu. Yd.	5.9	
Reinforcement Bars		Pound	870	

NOTES

- A distance not less than six feet of the barrel shall be poured monolithically with the wingwalls.
- Reinforcement bars shall conform to the requirements of ASTM A 706 Gr 60.
- Aggregate gradation CS-01 meeting requirements of AGGREGATE SUBGRADE IMPROVEMENT (DI) special provisions. Top 3 inches shall be virgin aggregate meeting gradation requirements of CA-6. A minimum of 12" of AGGREGATE SUBGRADE IMPROVEMENT shall be used as bedding for the barrel in this extension.

REV. 4-1-2020