

196

STATE OF ILLINOIS  
DEPARTMENT OF TRANSPORTATION

SECTION	COUNTY	TOTAL SHEETS	SHEET NO.
2019 135 LS	VARIOUS	8	J
CONTRACT NO. 62K09			

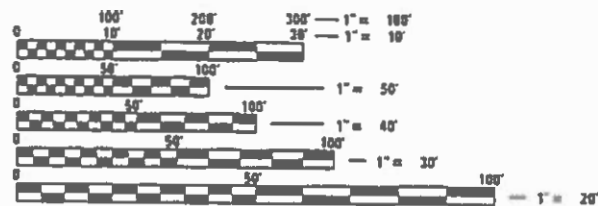
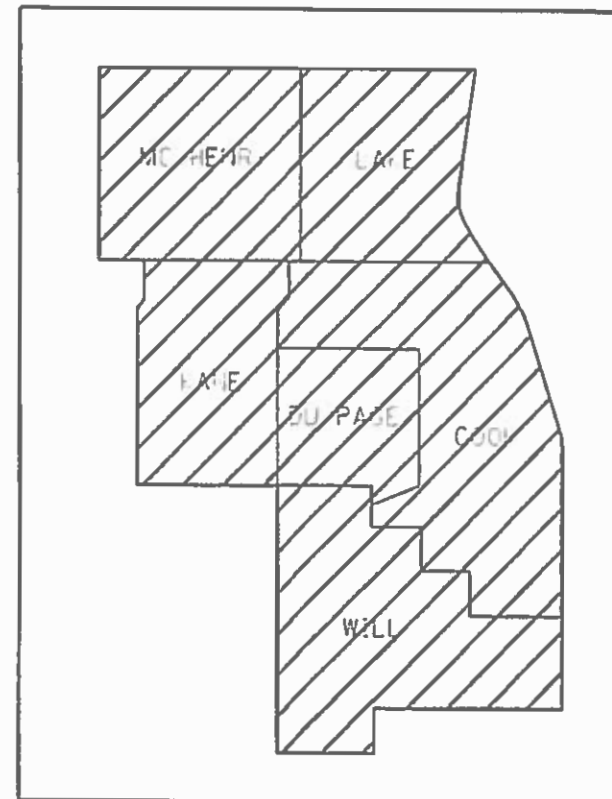
FOR INDEX OF SHEETS, SEE SHEET NO. 2

# PROPOSED HIGHWAY PLANS

ROUTE: VARIOUS  
SECTION 2019-135-LS  
PROJECT: NA  
VEGETATION CONTROL (WEED SPRAYING)  
VARIOUS COUNTIES

C-91-065-20

IMPROVEMENTS ARE AT VARIOUS  
LOCATIONS WITHIN DISTRICT ONE



FULL SIZE PLANS HAVE BEEN PREPARED USING STANDARD ENGINEERING SCALES. REDUCED SIZED PLANS WILL NOT CONFORM TO STANDARD SCALES. IN MAKING MEASUREMENTS ON REDUCED PLANS, THE ABOVE SCALES MAY BE USED.

J.U.I.E.  
JOINT UTILITY LOCATION INFORMATION FOR EXCAVATORS  
1-800-892-0123  
OR 811

PROJECT ENGINEER JAMES STUMPNER  
PROJECT MANAGER GIOVANNA ZAFFINA (847) 705-4171

CONTRACT NO. 62K09

GROSS LENGTH = x.xx FT. = x.xxx MILE  
NET LENGTH = x.xx FT. = x.xxx MILE

STATE OF ILLINOIS  
DEPARTMENT OF TRANSPORTATION

SUBMITTED ~~December 19~~ 19 20 19

*Anthony D'Angelo*  
REGIONAL ENGINEER

Jan 31 20 20  
ENGINEER OF DESIGN AND ENVIRONMENT

Jan 31 20 20  
DIRECTOR OF HIGHWAYS PROJECT IMPLEMENTATION

PRINTED BY THE AUTHORITY  
OF THE STATE OF ILLINOIS

**INDEX OF SHEETS**

- 1) COVER SHEET
- 2) INDEX OF SHEETS, HIGHWAY STANDARDS
- 3) GENERAL NOTES
- 4) SUMMARY OF QUANTITIES
- 5) SAMPLE WORK ORDER
- 6) SPRAY SCHEDULE AND LOCATIONS
- 7) TC-10 TRAFFIC CONTROL AND PROTECTION FOR SIDE ROADS, INTERSECTIONS, AND DRIVEWAYS
- 8) TC-17 TRAFFIC CONTROL DETAIL FOR FREEWAY SHOULDER CLOSURES AND PARTIAL RAMP CLOSURES

**HIGHWAY STANDARDS**

- 701001-02 OFF ROAD OPERATIONS, 2L, 2W, MORE THAN 15' AWAY
- 701006-05 OFF-ROAD OPERATIONS, 2L,2W, 15' TO 24' FROM PAVEMENT EDGE
- 701011-04 OFF-ROAD MOVING OPERATIONS, 2L, 2W, DAY ONLY
- 701106-02 OFF ROAD OPERATIONS, MULTILANE, MORE THAN 15' AWAY
- 701426-09 LANE CLOSURE, MULTI-LANE, INTERMITTANT OR MOVING OPERATION, FOR SPEEDS > 45 MPH
- 701901-08 TRAFFIC CONTROL DEVICES

MODEL  
FILE NAME:

USER NAME =	DESIGNED -	REVISED -
	DRAWN -	REVISED -
PLOT SCALE =	CHECKED -	REVISED -
PLOT DATE =	DATE -	REVISED -

**STATE OF ILLINOIS  
DEPARTMENT OF TRANSPORTATION**

**VEGETATION CONTROL (WEED SPRAYING)  
INDEX OF SHEETS, HIGHWAY STANDARDS**

SCALE: SHEET OF SHEETS STA. TO STA.

F.A. RTE.	SECTION	COUNTY	TOTAL SHEETS	SHEET NO.
	2019-135 LS	VARIOUS	8	2
CONTRACT NO. 62K09				
ILLINOIS				

**GENERAL NOTES**

1. SPRAY WORK WILL BE **LABOR ONLY**. ALL HERBICIDES SHALL BE PROVIDED BY **IDOT**. THE CONTRACTOR WILL PROVIDE WATER AND MIXING AGENTS.
2. ADDITIONAL HERBICIDES MAY BE USED TO TANK MIX WITH EXISTING HERBICIDES AS DETERMINED BY THE ENGINEER.
3. RANDOM SPOT CHECK INSPECTION BY THE ENGINEER WILL OCCUR TO VERIFY WEED CONTROL CALIBRATION RATES
4. SCHEDULE MAY VARY AS DIRECTED BY THE ENGINEER.
5. THE CONTRACTOR SHALL NOT START WORK BEFORE THE DATES SCHEDULED WITHOUT WRITTEN AUTHORIZATION FROM THE ENGINEER.
6. NO WORK WILL BE ALLOWED DURING ANY LEGAL HOLIDAY.
7. SCHEDULES OF ANTICIPATED START DATES SHOWN ARE TENTATIVE AS DETERMINED BY THE DEPARTMENT'S OPERATIONAL NEEDS.
8. ALL LANE AND SHOULDER CLOSURE REQUESTS SHALL BE SUBMITTED TO THE TRAFFIC OPERATIONS ENGINEER 24 HOURS IN ADVANCE OF REQUESTED CLOSURES PRIOR TO WORKING.
9. THE CONTRACTOR SHALL TAKE ALL NECESSARY SAFETY PRECAUTIONS TO PROTECT AND PROVIDE ACCESS TO ABUTTING PROPERTY, UTILITIES, PEDESTRIANS, AND VEHICULAR TRAFFIC.
10. ALL TRAFFIC SIGNS SHALL HAVE RETROREFLECTIVE SHEETING.
11. ALL VEHICLES INCLUDING PASSENGER CARS, WHETHER OWNED BY THE CONTRACTOR OR ANYONE REPRESENTING THEM, SHALL BE EQUIPPED WITH A YELLOW FLASHING LIGHT MOUNTED EITHER ON TOP OR IN THE REAR WINDOW OF THE VEHICLE AND VISIBLE FOR AT LEAST 500 FEET TO THE REAR OF THE VEHICLE. IN ADDITION, A SIGN MUST BE DISPLAYED ON EACH SIDE OF THE VEHICLE AND WITH LETTERS AT LEAST 3 INCHES IN HEIGHT AND WITH A SUITABLE FONT, SHOWING THE COMPANY NAME. MAGNETIC SIGNS ARE ACCEPTABLE.
12. THE CONTRACTOR SHALL REQUEST AND GAIN THE APPROVAL FROM THE ILLINOIS DEPARTMENT OF TRANSPORTATION'S EXPRESSWAY TRAFFIC OPERATIONS ENGINEER AT [WWW.IDOTLCS.COM](http://WWW.IDOTLCS.COM) TWENTY-FOUR (24) HOURS IN ADVANCE OF ALL DAILY LANE, RAMP AND SHOULDER CLOSURES. THIS ADVANCE NOTIFICATION IS CALCULATED BASED ON WORKWEEK OF MONDAY THROUGH FRIDAY AND SHALL NOT INCLUDE WEEKENDS OR HOLIDAYS.
13. DAY TIME, ONE LANE MOVING AND PARTIAL RAMP CLOSURE OPERATIONS SHALL ONLY BE PERMITTED WITH THE DEPLOYMENT OF ILLINOIS HIGHWAY STANDARD FOR TRAFFIC CONTROL STANDARD 701426-09, DETAIL B. DETAIL A OF STANDARD 701426-09 SHALL BE USED AS A MOVING SHOULDER CLOSURES WHERE SHOULDERS ARE WIDE ENOUGH TO ACCOMMODATE FOLLOW VEHICLES WITHOUT ENCROACHING INTO LIVE LANES OF TRAFFIC, ALL BETWEEN 9:00 AM AND 1:00 PM FOR ALL OUTBOUND TRAFFIC AND 10:00 AM AND 2:00 PM FOR ALL INBOUND TRAFFIC ON MONDAY THROUGH FRIDAY, AND BETWEEN 5:00 AM AND 2:30 PM ON SATURDAY AND SUNDAY ON THE FOLLOWING EXPRESSWAYS:
  - I-57, Entire Limits, except Halsted St. to Dan Ryan northbound and southbound left hand side only.
  - I-80 eastbound and westbound, Kendall County Line to Lincoln Hwy (US-30) left hand side only.
  - Stevenson (I-55) northbound and southbound, Reed Rd to I-80 left hand side only

MODEL FILE NAME:

USER NAME =	DESIGNED -	REVISED -
	DRAWN -	REVISED -
PLOT SCALE =	CHECKED -	REVISED -
PLOT DATE =	DATE -	REVISED -

**STATE OF ILLINOIS  
DEPARTMENT OF TRANSPORTATION**

**VEGETATION CONTROL (WEED SPRAYING)  
GENERAL NOTES**

SCALE: SHEET OF SHEETS STA. TO STA.

F.A. RTE.	SECTION	COUNTY	TOTAL SHEETS	SHEET NO.
	2019-135 LS	VARIOUS	8	3
ILLINOIS			CONTRACT NO. 62K09	





Contract Number: \_\_\_\_\_  
 Weed Control Work Order #: \_\_\_\_\_  
 Route: \_\_\_\_\_

Standard 30-day application       Specialized 10-day spot spray

Cook	DuPage	Kane	Work Order Prepared By	Team Section
Lake	McHenry	Will		

**Location:**  
 \_\_\_\_\_  
 \_\_\_\_\_  
 \_\_\_\_\_

Refer to attached Weed Control maps, which are hereby made a part of this work order (\_\_\_\_ sheets)

WORK INCLUDED IN THIS WORK ORDER			
Item	Est. Map Qty.	Priority Multiplier	Est. Work Order Qty.
Weed Control, Aquatic K0029614	acres gallons		acres gallons
Weed Control, Broadleaf in Turf K0029618	acres gallons		acres gallons
Weed Control, Teasel K0029624	acres gallons		acres gallons
Weed Control, Non-Selective Non-Residual K0029632	acres gallons		acres gallons

AUTHORIZATION OF WORK ORDER	
Resident Engineer/Technician Signature	Date/Time
Contractor Signature (to acknowledge receipt)	Date/Time

APPROVED PERSONNEL (RE USE ONLY)	
Name	License Number

CERTIFICATION OF COMPLETION	
Contractor Signature	Date/Time

ACCEPTANCE OF COMPLETED WORK	
Resident Engineer/Technician Signature	Date/Time

**Weed Spray Schedule**

INTERVAL OF TASK	TASK	HERBICIDE
March 15 – June 30	Teasel/ Broadleaf in Turf (Cycle 1)	Weed Control, Teasel or Weed Control, Broadleaf in Turf
April 1 – June 30	Guardrail/ Paved Median	Weed Control, Non-Selective Non-residual or Weed Control, Selective
March 15-June 30	Tree grove maintenance	Weed Control, Broadleaf in Turf
July 1 – September 30	Phragmites Control	Weed Control Aquatic
September 1 –November 15	Teasel/ Broadleaf in Turf (Cycle 2)	Weed Control, Teasel or Weed Control, Broadleaf in Turf
As Directed by Engineer	Various Invasive Species	As Directed by Engineer

**Weed Spray Locations:**

I-55- Grundy County Line to Lake Shore Drive  
 I-57- Kankakee County Line to I-90/94 Dan Ryan Expressway  
 I-80- Kendall County Line to I-294 Tri-State Tollway

MODEL  
FILE NAME:

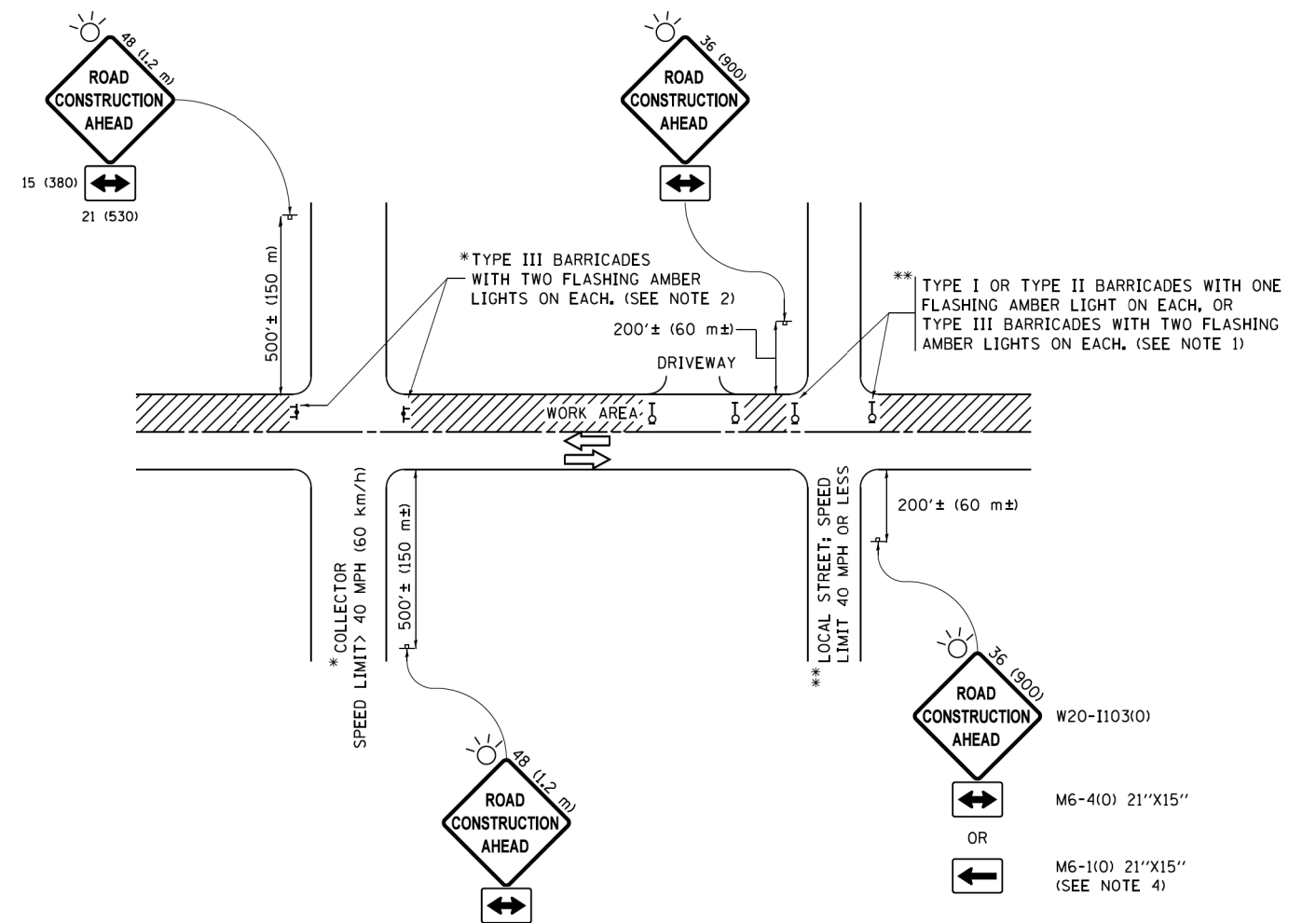
USER NAME =	DESIGNED -	REVISED -
	DRAWN -	REVISED -
PLOT SCALE =	CHECKED -	REVISED -
PLOT DATE =	DATE -	REVISED -

**STATE OF ILLINOIS  
DEPARTMENT OF TRANSPORTATION**

**VEGETATION CONTROL (WEED SPRAYING)  
SPRAY SCHEDULE & LOCATIONS**

SCALE: SHEET OF SHEETS STA. TO STA.

F.A. RTE.	SECTION	COUNTY	TOTAL SHEETS	SHEET NO.
	2019-135 LS	VARIOUS	8	6
CONTRACT NO. 62K09				
ILLINOIS				



**NOTES:**

1. SIDE ROAD WITH A SPEED LIMIT OF 40 MPH (60 km/h) OR LESS AS SHOWN ON THE DRAWING AND AS DIRECTED BY THE ENGINEER:
  - a) ONE "ROAD CONSTRUCTION AHEAD" SIGN 36 x 36 (900x900) WITH A FLASHER MOUNTED ON IT APPROXIMATELY 200' (60 m) IN ADVANCE OF THE MAIN ROUTE.
  - b) THE CLOSED PORTION OF THE MAIN ROUTE SHALL BE PROTECTED BY BLOCKING WITH TYPE I, TYPE II OR TYPE III BARRICADES, 1/3 OF THE CROSS SECTION OF THE CLOSED PORTION.
2. SIDE ROAD WITH A SPEED LIMIT GREATER THAN 40 MPH (60 km/h) AS SHOWN ON THE DRAWING AND AS DIRECTED BY THE ENGINEER:
  - a) ONE "ROAD CONSTRUCTION AHEAD" SIGN 48 x 48 (1.2 m x 1.2 m) WITH A FLASHER MOUNTED ON IT APPROXIMATELY 500' (150 m) IN ADVANCE OF THE MAIN ROUTE.
  - b) THE CLOSED PORTION OF THE MAIN ROUTE SHALL BE PROTECTED BY BLOCKING WITH TYPE III BARRICADES, 1/2 OF THE CROSS SECTION OF THE CLOSED PORTION.
3. CONES MAY BE SUBSTITUTED FOR BARRICADES OR DRUMS AT HALF THE SPACING DURING DAY OPERATIONS. CONES SHALL BE A MINIMUM OF 28 (710) IN HEIGHT.
4. WHEN THE SIDE ROAD LIES BETWEEN THE BEGINNING OF THE MAINLINE SIGNING AND THE WORK ZONE, A SINGLE HEADED ARROW (M6-1) SHALL BE USED IN LIEU OF THE DOUBLE HEADED ARROW (M6-4),
5. WHEN WORK IS BEING PERFORMED ON A SIDE ROAD OR DRIVEWAY, FOLLOW THE APPLICABLE STANDARD(S). THE DIRECTIONAL ARROW (M6-1 OR M6-4) SHALL BE COVERED OR REMOVED WHEN NO LONGER CONSISTENT WITH THE TRAFFIC CONTROL SET-UP.
6. ADVANCE WARNING SIGNS ARE TO BE OMITTED ON DRIVEWAYS UNLESS OTHERWISE SPECIFIED IN THE PLANS OR BY THE ENGINEER.
7. THE TRAFFIC CONTROL AND PROTECTION FOR SIDE ROADS, INTERSECTIONS, AND DRIVEWAYS SHALL BE INCLUDED IN THE COST OF SPECIFIED TRAFFIC CONTROL STANDARDS OR ITEMS.

All dimensions are in inches (millimeters) unless otherwise shown.

MODEL FILE NAME:

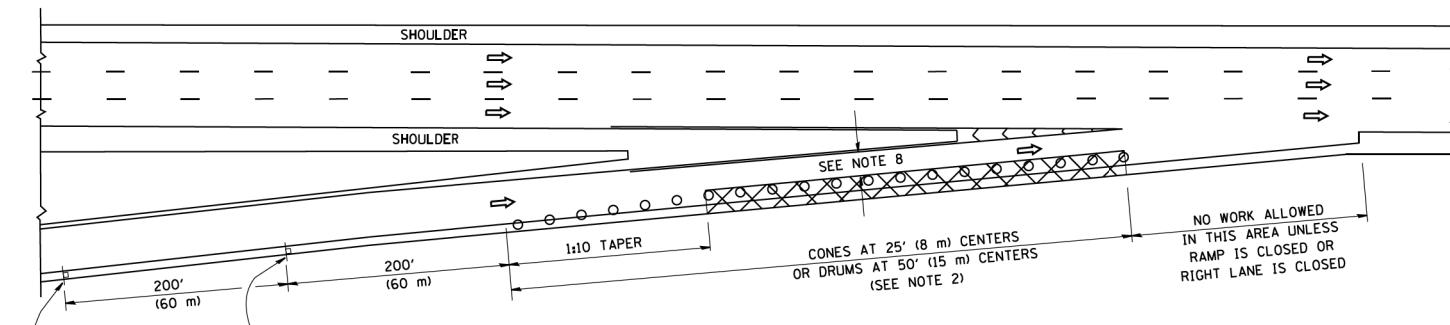
USER NAME =	DESIGNED -	REVISED -
	DRAWN -	REVISED -
PLOT SCALE =	CHECKED -	REVISED -
PLOT DATE =	DATE -	REVISED -

**STATE OF ILLINOIS  
DEPARTMENT OF TRANSPORTATION**

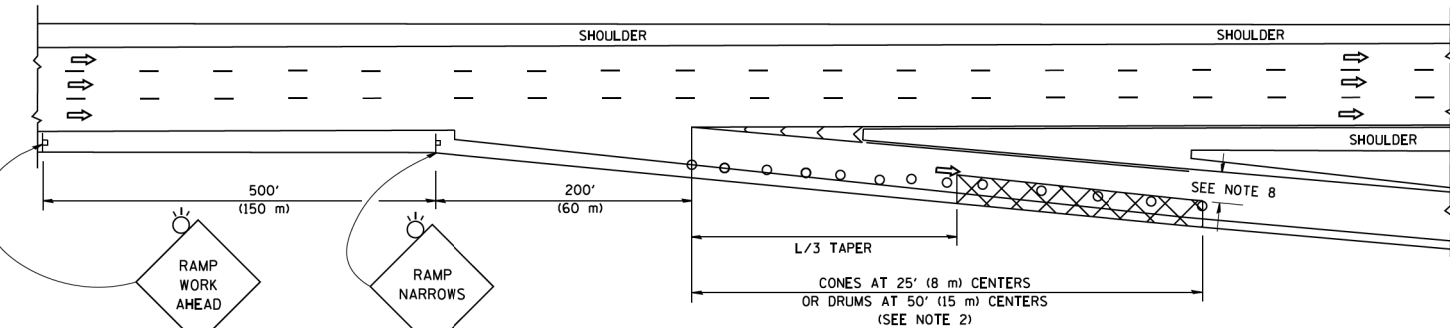
<b>VEGETATION CONTROL (WEED SPRAYING)</b>			
<b>TC-10 TRAFFIC CONTROL &amp; PROTECTION FOR SIDE ROADS, INTERSECTIONS, &amp; DRIVEWAYS</b>			
SCALE:	SHEET	OF SHEETS	STA. TO STA.

F.A. RTE.	SECTION	COUNTY	TOTAL SHEETS	SHEET NO.
	2019-135 LS	VARIOUS	8	7
			CONTRACT NO. 62K09	
ILLINOIS				

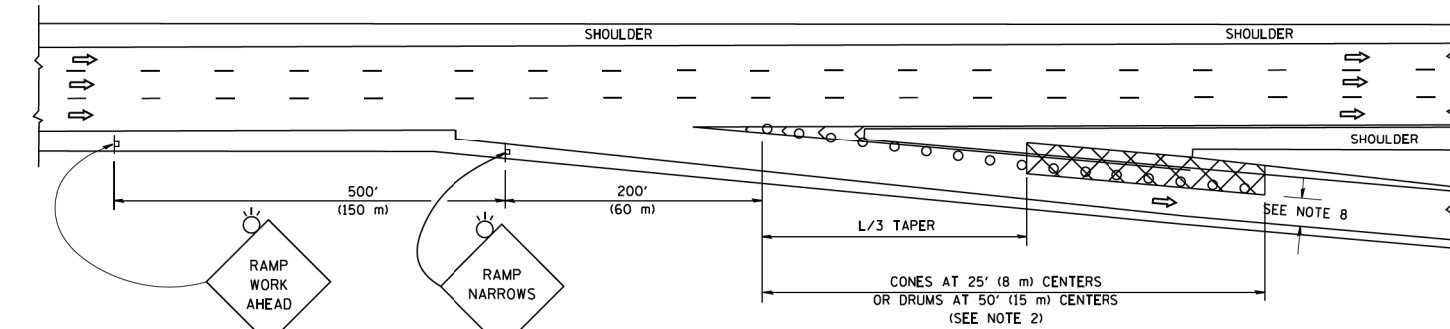
PARTIAL RAMP CLOSURE DETAILS



TYPICAL ENTRANCE RAMP



TYPICAL EXIT RAMP



TYPICAL EXIT RAMP

SYMBOLS

- ACTIVE WORK AREA
- SIGN ON PORTABLE OR PERMANENT SUPPORT
- FLAGGER WITH CONTROL SIGN
- TYPE II BARRICADE OR DRUM
- CONE, DRUM OR BARRICADE
- IMPACT ATTENUATOR OF TYPE AND TEST LEVEL SPECIFIED

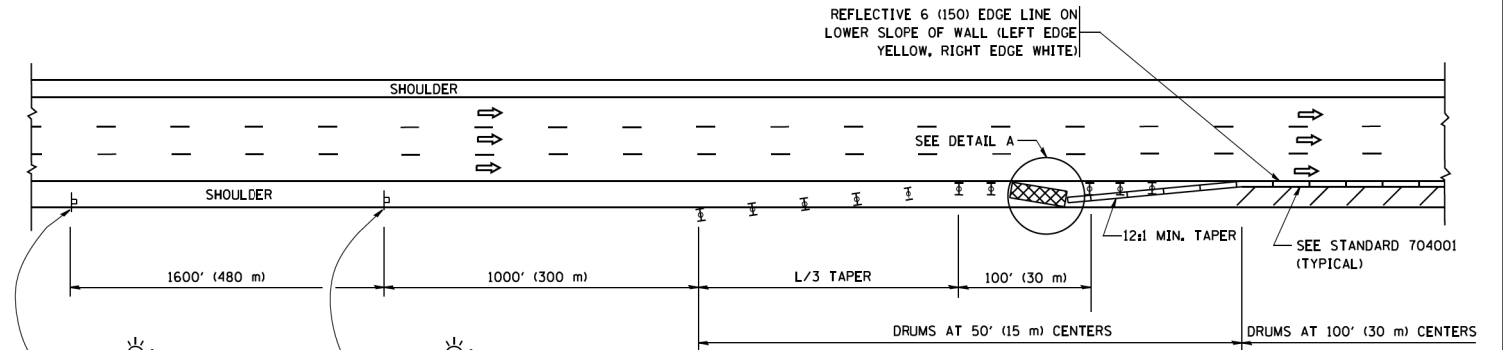
GENERAL NOTES

1. THE "L" DISTANCE EQUALS:
 

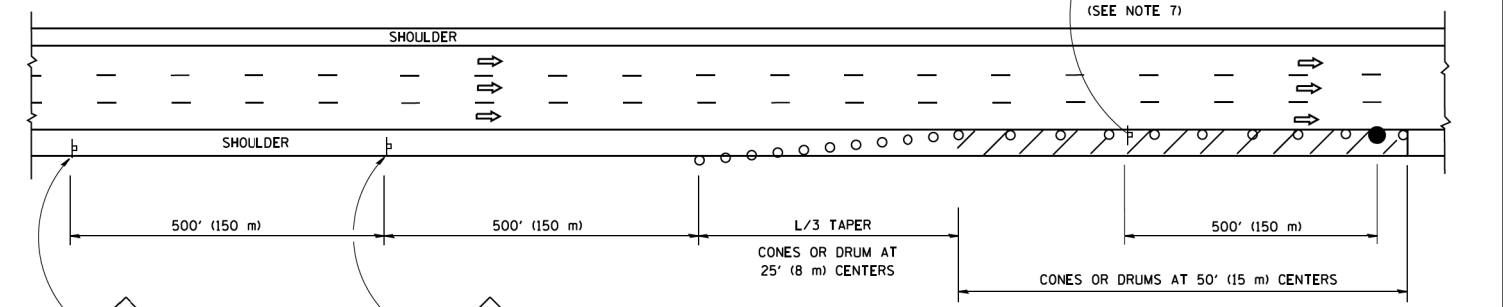
SPEED LIMIT	FORMULAS
45 mph (80 km/h) OR GREATER:	METRIC    ENGLISH
	$L=0.65(W)(S)$ $L=(W)(S)$

W = WIDTH OF OFFSET IN FEET (METERS)  
S = NORMAL POSTED SPEED MPH (KM/H)
2. TYPE II BARRICADES OR DRUMS ARE REQUIRED FOR ALL NIGHTIME CLOSURES. TYPE II BARRICADES OR DRUMS WITH MONODIRECTIONAL STEADY BURN LIGHTS ARE REQUIRED FOR DELINEATING OBSTACLES, EXCAVATIONS, OR HAZARDS EXCEEDING 100 FT (30m) IN LENGTH AT NIGHT.
3. ALL SIGNS SHALL BE POST MOUNTED IF THE CLOSURE TIME EXCEEDS FOUR DAYS.
4. FLASHING LIGHTS SHALL BE USED DURING THE HOURS OF DARKNESS AND SHALL BE INSTALLED ABOVE THE FIRST TWO SETS OF SIGNS.
5. THE IMPACT ATTENUATOR, TEMPORARY IS NOT REQUIRED WHEN THE TEMPORARY CONCRETE BARRIER WALL IS PROTECTED BY OR IS TIED INTO THE EXISTING GUARDRAIL. IF OFFSET IS LESS THAN 5 FEET USE NARROW USE TYPE DEVICE TO MEET NCHRP350/MASH.
6. AUTHORIZATION FROM THE DISTRICT'S BUREAU OF TRAFFIC IS REQUIRED FOR ALL FREEWAY CLOSURES.
7. THE FLAGGER AND FLAGGER SIGN ARE REQUIRED AT THE ABOVE WORK SITES WHEN:
  - a. FOUR OR MORE WORK VEHICLES ENTER THE TRAFFIC LANES IN A ONE HOUR PERIOD.
  - b. THE WORK AVTIVITY REQUIRES FREQUENT ENCROACHMENT INTO THE LANE OPEN TO TRAFFIC.
 THE FLAGGER SHALL BE STATIONED APPROXIMATELY 100' (30 m) TO 200' (60 m) IN ADVANCE OF THE WORKERS.
8. 12' MIN. WIDTH TANGENT SECTION  
16' MIN. WIDTH CURVE SECTION.

SHOULDER CLOSURE DETAILS



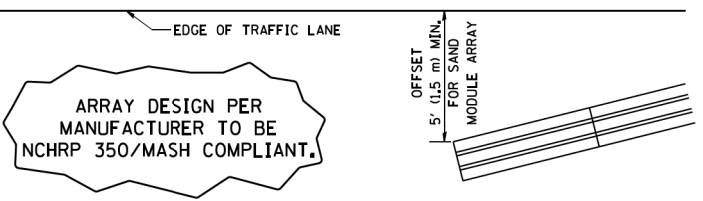
PERMANENT SHOULDER CLOSURE



DAYTIME SHOULDER CLOSURE

THIS DETAIL IS USED WHERE:

1. VEHICLES, EQUIPMENT, WORKERS OR THEIR ACTIVITIES ENCROACH IN AN AREA CLOSER THAN 15' (4.5 m) TO THE EDGE OF PAVEMENT FOR A PERIOD IN EXCESS OF 15 MINUTES.



DETAIL "A"  
IMPACT ATTENUATOR, TEMPORARY  
(SEE NOTE 5)

ALL DIMENSIONS ARE IN INCHES (MILLIMETERS) UNLESS OTHERWISE SHOWN.

MODEL FILE NUMBER:

USER NAME =	DESIGNED -	REVISED -
PLOT SCALE =	DRAWN -	REVISED -
PLOT DATE =	CHECKED -	REVISED -
	DATE -	REVISED -

STATE OF ILLINOIS  
DEPARTMENT OF TRANSPORTATION

VEGETATION CONTROL (WEED SPRAYING)			
TC-17 TRAFFIC CONTROL DETAIL FOR FREEWAY SHOULDER CLOSURES & PARTIAL RAMP CLOSURES			
SCALE:	SHEET	OF SHEETS	STA. TO STA.

F.A. RTE.	SECTION	COUNTY	TOTAL SHEETS	SHEET NO.
	2019-135 LS	VARIOUS	8	8
ILLINOIS			CONTRACT NO. 62K09	