

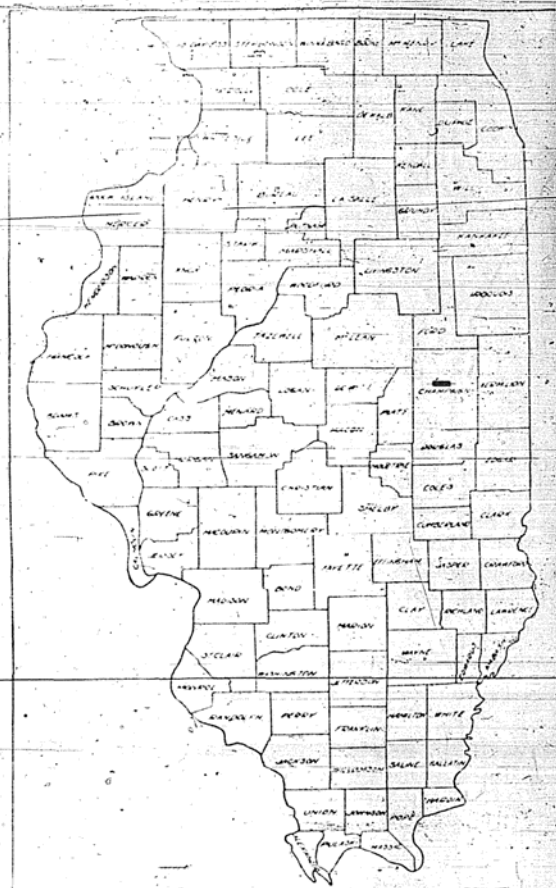
**STATE OF ILLINOIS**  
**DEPARTMENT OF PUBLIC WORKS AND BUILDINGS**  
**DIVISION OF HIGHWAYS**  
**PLANS FOR PROPOSED**  
**FEDERAL AID HIGHWAY**

SECTION	14 VB	COUNTY	CHAMPAIGN	TOTAL SHEETS	20	SHEET NO.	1
PROJECT	14 VF	PROJECT	FGI-106(9)				



SCALES  
 PLAN 1 INCH = 100 FT  
 PROFILE, HOR 1 INCH = 100 FT  
 PROFILE, VERT 1 INCH = 10 FT  
 CROSS-SECTIONS 1 INCH = 5 FT

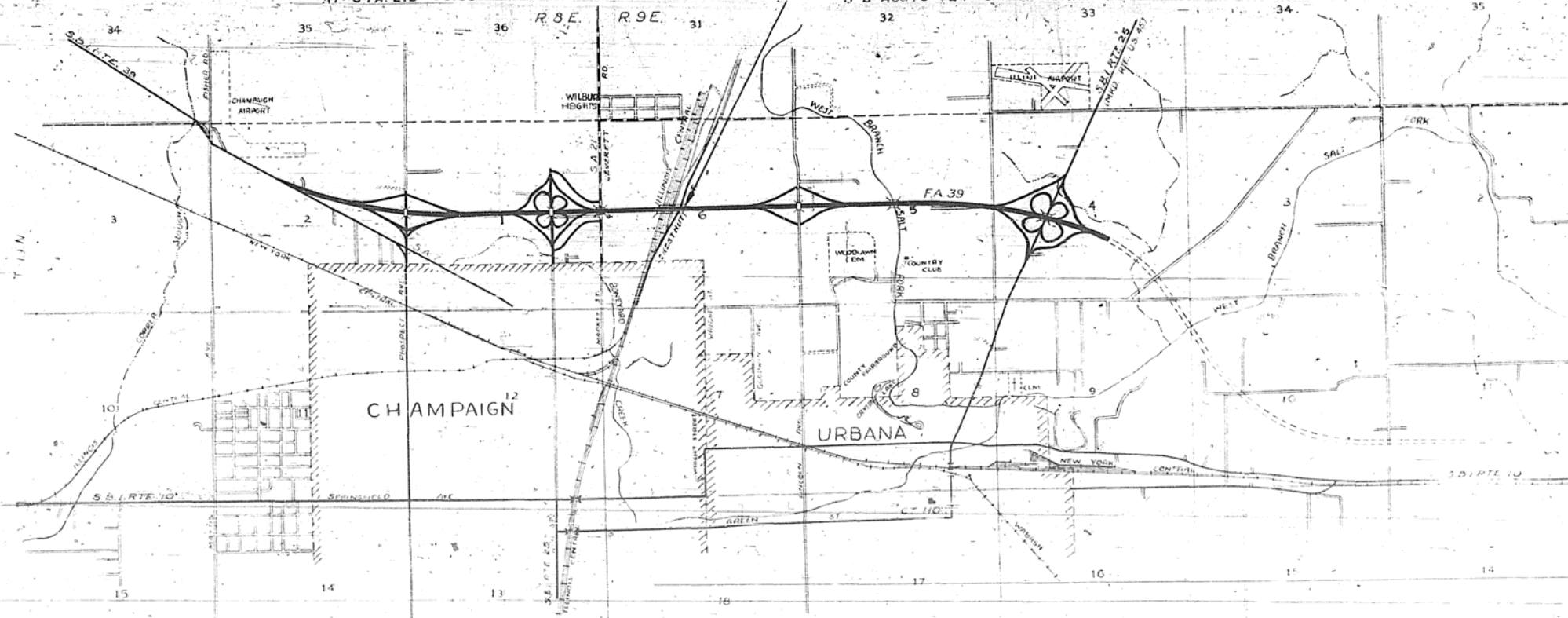
**F. A. ROUTE 39, SECTION 14 - VB, VF, CHAMPAIGN COUNTY**  
**PROJECT FGI-106 (9)**



LOCATION OF SECTION INDICATED THUS: —

SECTION 14-VF INCLUDES FURNISHING, FABRICATING, SHOP PAINTING AND DELIVERY OF THE STRUCTURAL STEEL, METAL HANDRAIL AND OPEN STEEL FLOOR F.O.B. BRIDGE SITE, FOR A 4-SPAN STEEL PLATE GIRDER RAILROAD GRADE SEPARATION STRUCTURE ON R.C. PILE BENT ABUTMENTS AND OPEN R.C. PIERS SPANS: 1 @ 184'-3", 1 @ 225'-6", 1 @ 184'-3", 1 @ 124'-0" AT STA. 219+00.55.

SECTION 14-VB INCLUDES A 4-SPAN STEEL PLATE GIRDER RAILROAD GRADE SEPARATION STRUCTURE ON R.C. PILE BENT ABUTMENTS AND OPEN R.C. PIERS. SPANS: 1 @ 114'-3", 1 @ 225'-6", 1 @ 184'-3", 1 @ 124'-0". WITH THE EXCEPTION OF FURNISHING, FABRICATING, SHOP PAINTING, AND DELIVERY OF THE STRUCTURAL STEEL, METAL HANDRAIL AND OPEN STEEL FLOOR. RD WY 2 @ 27'-0", MEDIAN 4'-0", CURBS 2 @ 2'-0" & B-B ABUTS 72'-0" AT STA. 219+00.55.



STATE OF ILLINOIS  
 DEPARTMENT OF PUBLIC WORKS AND BUILDINGS  
 DIVISION OF HIGHWAYS

September 27, 55  
 C. C. Waidlich

Oct 19 55  
 Ralph A. ...

Oct 19 55  
 J. ...

Oct 19 55  
 J. ...

Oct 19 55  
 E. ...

DEPARTMENT OF COMMERCE  
 BUREAU OF PUBLIC ROADS

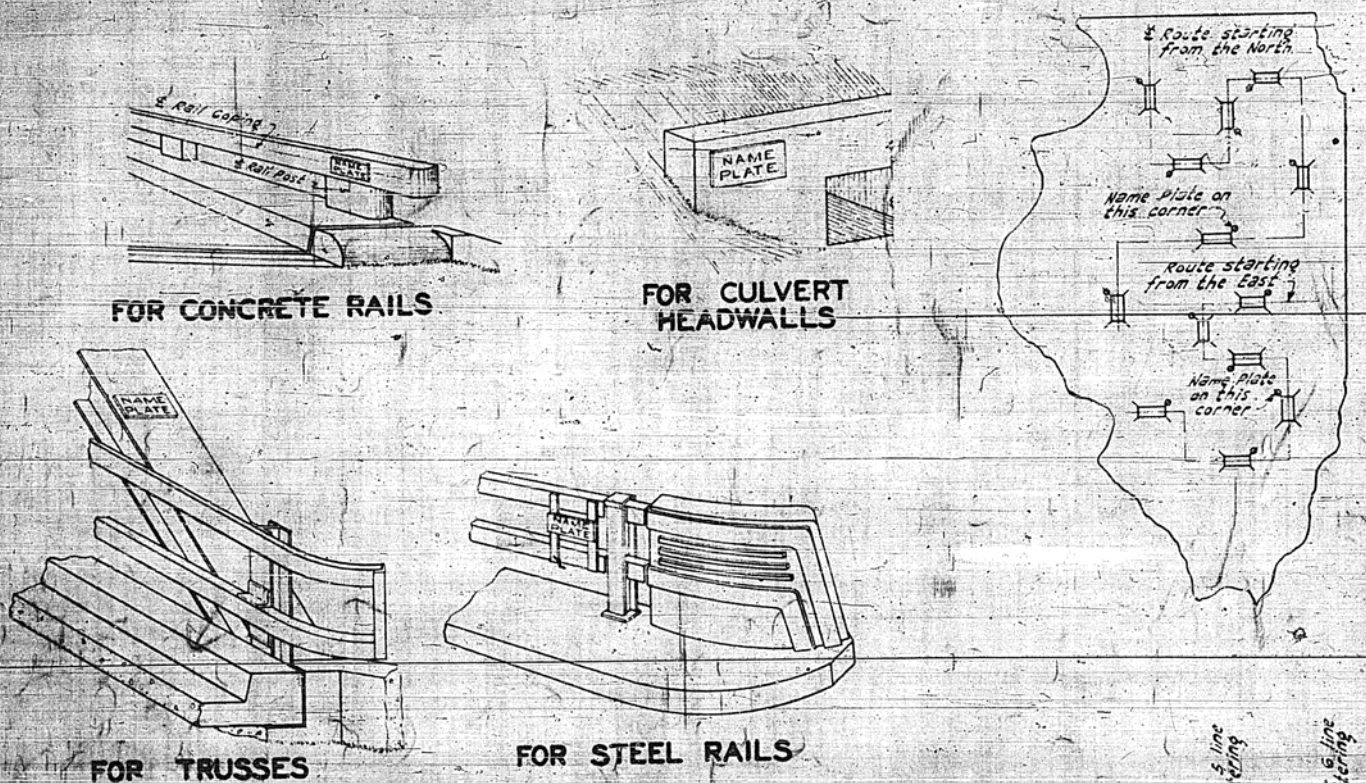
APPROVED: \_\_\_\_\_  
 DISTRICT ENGINEER

DATE: \_\_\_\_\_

SCALE 1" = 0.38 MILE

STATE OF ILLINOIS  
DEPARTMENT OF PUBLIC WORKS & BLDGS  
DIVISION OF HIGHWAYS

Sheet 1 of 1



MATERIAL - Best quality brass or bronze. Square cut and not tapered. Top surface polished. Raised 1/8 inch. Four legs at least three inches long, cast on back of plate.

BORDER - 5/16" LETTERING - 1/8" PLATE TO BE FASTENED ON STEEL MEMBER OF FABRICATING SHOP BY BOLTING AROUND UNDER DIAGONAL OF PILE.

FOR CONCRETE RAILS, CULVERT HEADWALLS & SUBWAYS - Plate to be bolted on with 1/2" brass or bronze hex head bolts. Place to be centered on 1/2" of rail post and 1/2" of handrail coping.

FOR STEEL TRUSS SPAN - Plate to end just about five feet above roadway. Place midway between horizontal rail members.

FOR STEEL RAILS - See design plans for location.

FOR SUBWAYS - See design plans for location.

DETAIL OF  
NAME PLATE FOR BRIDGES

STD. No. 2113

EXAMINED March 4 1953  
W.C. Hanson  
ENGINEER OF BRIDGE & TRAFFIC STRUCTS  
PASSED E. J. ...  
APPROVED F. J. ...  
CHIEF HIGHWAY ENGINEER

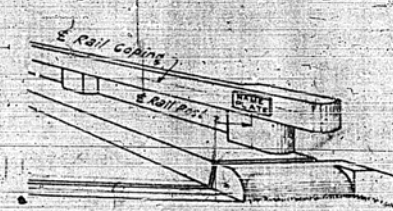
ROUTE NO.	SECTION	COUNTY	TOTAL SHEETS	SHEET NO.
FA 39	14-VB	CHAMPAIGN	20	2
FED. ROAD DIST. 7 ILLINOIS			FED. AID PROJECT #610418	

Sheet 1 of 1

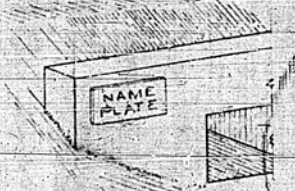
NO.	DESCRIPTION	AMOUNT
1	Cover sheet	2,004.7
2	Index of sheets	55.1
3	Plan and Profile Sta. 212 + 00 to 222 + 00	290,310
4	Bridge Plan Sheet 1 of 16	
5	Bridge Plan Sheet 2 of 16	
6	Bridge Plan Sheet 3 of 16	
7	Bridge Plan Sheet 4 of 16	
8	Bridge Plan Sheet 5 of 16	
9	Bridge Plan Sheet 6 of 16	
10	Bridge Plan Sheet 7 of 16	
11	Bridge Plan Sheet 8 of 16	
12	Bridge Plan Sheet 9 of 16	
13	Bridge Plan Sheet 10 of 16	
14	Bridge Plan Sheet 11 of 16	
15	Bridge Plan Sheet 12 of 16	
16	Bridge Plan Sheet 13 of 16	
17	Bridge Plan Sheet 14 of 16	
18	Bridge Plan Sheet 15 of 16	
19	Bridge Plan Sheet 16 of 16	
20	Profile Sheet 1 of 2	
21	Profile Sheet 2 of 2	
22	Profile Sheet 3 of 2	
23	Profile Sheet 4 of 2	
24	Profile Sheet 5 of 2	
25	Profile Sheet 6 of 2	
26	Profile Sheet 7 of 2	
27	Profile Sheet 8 of 2	
28	Profile Sheet 9 of 2	
29	Profile Sheet 10 of 2	
30	Profile Sheet 11 of 2	
31	Profile Sheet 12 of 2	
32	Profile Sheet 13 of 2	
33	Profile Sheet 14 of 2	
34	Profile Sheet 15 of 2	
35	Profile Sheet 16 of 2	
36	Profile Sheet 17 of 2	
37	Profile Sheet 18 of 2	
38	Profile Sheet 19 of 2	
39	Profile Sheet 20 of 2	
40	Profile Sheet 21 of 2	
41	Profile Sheet 22 of 2	
42	Profile Sheet 23 of 2	
43	Profile Sheet 24 of 2	
44	Profile Sheet 25 of 2	
45	Profile Sheet 26 of 2	
46	Profile Sheet 27 of 2	
47	Profile Sheet 28 of 2	
48	Profile Sheet 29 of 2	
49	Profile Sheet 30 of 2	
50	Profile Sheet 31 of 2	
51	Profile Sheet 32 of 2	
52	Profile Sheet 33 of 2	
53	Profile Sheet 34 of 2	
54	Profile Sheet 35 of 2	
55	Profile Sheet 36 of 2	
56	Profile Sheet 37 of 2	
57	Profile Sheet 38 of 2	
58	Profile Sheet 39 of 2	
59	Profile Sheet 40 of 2	
60	Profile Sheet 41 of 2	
61	Profile Sheet 42 of 2	
62	Profile Sheet 43 of 2	
63	Profile Sheet 44 of 2	
64	Profile Sheet 45 of 2	
65	Profile Sheet 46 of 2	
66	Profile Sheet 47 of 2	
67	Profile Sheet 48 of 2	
68	Profile Sheet 49 of 2	
69	Profile Sheet 50 of 2	
70	Profile Sheet 51 of 2	
71	Profile Sheet 52 of 2	
72	Profile Sheet 53 of 2	
73	Profile Sheet 54 of 2	
74	Profile Sheet 55 of 2	
75	Profile Sheet 56 of 2	
76	Profile Sheet 57 of 2	
77	Profile Sheet 58 of 2	
78	Profile Sheet 59 of 2	
79	Profile Sheet 60 of 2	
80	Profile Sheet 61 of 2	
81	Profile Sheet 62 of 2	
82	Profile Sheet 63 of 2	
83	Profile Sheet 64 of 2	
84	Profile Sheet 65 of 2	
85	Profile Sheet 66 of 2	
86	Profile Sheet 67 of 2	
87	Profile Sheet 68 of 2	
88	Profile Sheet 69 of 2	
89	Profile Sheet 70 of 2	
90	Profile Sheet 71 of 2	
91	Profile Sheet 72 of 2	
92	Profile Sheet 73 of 2	
93	Profile Sheet 74 of 2	
94	Profile Sheet 75 of 2	
95	Profile Sheet 76 of 2	
96	Profile Sheet 77 of 2	
97	Profile Sheet 78 of 2	
98	Profile Sheet 79 of 2	
99	Profile Sheet 80 of 2	
100	Profile Sheet 81 of 2	
101	Profile Sheet 82 of 2	
102	Profile Sheet 83 of 2	
103	Profile Sheet 84 of 2	
104	Profile Sheet 85 of 2	
105	Profile Sheet 86 of 2	
106	Profile Sheet 87 of 2	
107	Profile Sheet 88 of 2	
108	Profile Sheet 89 of 2	
109	Profile Sheet 90 of 2	
110	Profile Sheet 91 of 2	
111	Profile Sheet 92 of 2	
112	Profile Sheet 93 of 2	
113	Profile Sheet 94 of 2	
114	Profile Sheet 95 of 2	
115	Profile Sheet 96 of 2	
116	Profile Sheet 97 of 2	
117	Profile Sheet 98 of 2	
118	Profile Sheet 99 of 2	
119	Profile Sheet 100 of 2	
120	Profile Sheet 101 of 2	
121	Profile Sheet 102 of 2	
122	Profile Sheet 103 of 2	
123	Profile Sheet 104 of 2	
124	Profile Sheet 105 of 2	
125	Profile Sheet 106 of 2	
126	Profile Sheet 107 of 2	
127	Profile Sheet 108 of 2	
128	Profile Sheet 109 of 2	
129	Profile Sheet 110 of 2	
130	Profile Sheet 111 of 2	
131	Profile Sheet 112 of 2	
132	Profile Sheet 113 of 2	
133	Profile Sheet 114 of 2	
134	Profile Sheet 115 of 2	
135	Profile Sheet 116 of 2	
136	Profile Sheet 117 of 2	
137	Profile Sheet 118 of 2	
138	Profile Sheet 119 of 2	
139	Profile Sheet 120 of 2	
140	Profile Sheet 121 of 2	
141	Profile Sheet 122 of 2	
142	Profile Sheet 123 of 2	
143	Profile Sheet 124 of 2	
144	Profile Sheet 125 of 2	
145	Profile Sheet 126 of 2	
146	Profile Sheet 127 of 2	
147	Profile Sheet 128 of 2	
148	Profile Sheet 129 of 2	
149	Profile Sheet 130 of 2	
150	Profile Sheet 131 of 2	
151	Profile Sheet 132 of 2	
152	Profile Sheet 133 of 2	
153	Profile Sheet 134 of 2	
154	Profile Sheet 135 of 2	
155	Profile Sheet 136 of 2	
156	Profile Sheet 137 of 2	
157	Profile Sheet 138 of 2	
158	Profile Sheet 139 of 2	
159	Profile Sheet 140 of 2	
160	Profile Sheet 141 of 2	
161	Profile Sheet 142 of 2	
162	Profile Sheet 143 of 2	
163	Profile Sheet 144 of 2	
164	Profile Sheet 145 of 2	
165	Profile Sheet 146 of 2	
166	Profile Sheet 147 of 2	
167	Profile Sheet 148 of 2	
168	Profile Sheet 149 of 2	
169	Profile Sheet 150 of 2	
170	Profile Sheet 151 of 2	
171	Profile Sheet 152 of 2	
172	Profile Sheet 153 of 2	
173	Profile Sheet 154 of 2	
174	Profile Sheet 155 of 2	
175	Profile Sheet 156 of 2	
176	Profile Sheet 157 of 2	
177	Profile Sheet 158 of 2	
178	Profile Sheet 159 of 2	
179	Profile Sheet 160 of 2	
180	Profile Sheet 161 of 2	
181	Profile Sheet 162 of 2	
182	Profile Sheet 163 of 2	
183	Profile Sheet 164 of 2	
184	Profile Sheet 165 of 2	
185	Profile Sheet 166 of 2	
186	Profile Sheet 167 of 2	
187	Profile Sheet 168 of 2	
188	Profile Sheet 169 of 2	
189	Profile Sheet 170 of 2	
190	Profile Sheet 171 of 2	
191	Profile Sheet 172 of 2	
192	Profile Sheet 173 of 2	
193	Profile Sheet 174 of 2	
194	Profile Sheet 175 of 2	
195	Profile Sheet 176 of 2	
196	Profile Sheet 177 of 2	
197	Profile Sheet 178 of 2	
198	Profile Sheet 179 of 2	
199	Profile Sheet 180 of 2	
200	Profile Sheet 181 of 2	
201	Profile Sheet 182 of 2	
202	Profile Sheet 183 of 2	
203	Profile Sheet 184 of 2	
204	Profile Sheet 185 of 2	
205	Profile Sheet 186 of 2	
206	Profile Sheet 187 of 2	
207	Profile Sheet 188 of 2	
208	Profile Sheet 189 of 2	
209	Profile Sheet 190 of 2	
210	Profile Sheet 191 of 2	
211	Profile Sheet 192 of 2	
212	Profile Sheet 193 of 2	
213	Profile Sheet 194 of 2	
214	Profile Sheet 195 of 2	
215	Profile Sheet 196 of 2	
216	Profile Sheet 197 of 2	
217	Profile Sheet 198 of 2	
218	Profile Sheet 199 of 2	
219	Profile Sheet 200 of 2	
220	Profile Sheet 201 of 2	
221	Profile Sheet 202 of 2	
222	Profile Sheet 203 of 2	
223	Profile Sheet 204 of 2	
224	Profile Sheet 205 of 2	
225	Profile Sheet 206 of 2	
226	Profile Sheet 207 of 2	
227	Profile Sheet 208 of 2	
228	Profile Sheet 209 of 2	
229	Profile Sheet 210 of 2	
230	Profile Sheet 211 of 2	
231	Profile Sheet 212 of 2	
232	Profile Sheet 213 of 2	
233	Profile Sheet 214 of 2	
234	Profile Sheet 215 of 2	
235	Profile Sheet 216 of 2	
236	Profile Sheet 217 of 2	
237	Profile Sheet 218 of 2	
238	Profile Sheet 219 of 2	
239	Profile Sheet 220 of 2	
240	Profile Sheet 221 of 2	
241	Profile Sheet 222 of 2	
242	Profile Sheet 223 of 2	
243	Profile Sheet 224 of 2	
244	Profile Sheet 225 of 2	
245	Profile Sheet 226 of 2	
246	Profile Sheet 227 of 2	
247	Profile Sheet 228 of 2	
248	Profile Sheet 229 of 2	
249	Profile Sheet 230 of 2	
250	Profile Sheet 231 of 2	
251	Profile Sheet 232 of 2	
252	Profile Sheet 233 of 2	
253	Profile Sheet 234 of 2	
254	Profile Sheet 235 of 2	
255	Profile Sheet 236 of 2	
256	Profile Sheet 237 of 2	
257	Profile Sheet 238 of 2	
258	Profile Sheet 239 of 2	
259	Profile Sheet 240 of 2	
260	Profile Sheet 241 of 2	
261	Profile Sheet 242 of 2	
262	Profile Sheet 243 of 2	
263	Profile Sheet 244 of 2	
264	Profile Sheet 245 of 2	
265	Profile Sheet 246 of 2	
266	Profile Sheet 247 of 2	
267	Profile Sheet 248 of 2	
268	Profile Sheet 249 of 2	
269	Profile Sheet 250 of 2	
270	Profile Sheet 251 of 2	
271	Profile Sheet 252 of 2	
272	Profile Sheet 253 of 2	
273	Profile Sheet 254 of 2	
274	Profile Sheet 255 of 2	
275	Profile Sheet 256 of 2	
276	Profile Sheet 257 of 2	
277	Profile Sheet 258 of 2	
278	Profile Sheet 259 of 2	
279	Profile Sheet 260 of 2	
280	Profile Sheet 261 of 2	
281	Profile Sheet 262 of 2	
282	Profile Sheet 263 of 2	
283	Profile Sheet 264 of 2	
284	Profile Sheet 265 of 2	
285	Profile Sheet 266 of 2	
286	Profile Sheet 267 of 2	
287	Profile Sheet 268 of 2	
288	Profile Sheet 269 of 2	
289	Profile Sheet 270 of 2	
290	Profile Sheet 271 of 2	
291	Profile Sheet 272 of 2	
292	Profile Sheet 273 of 2	
293	Profile Sheet 274 of 2	
294	Profile Sheet 275 of 2	
295	Profile Sheet 276 of 2	
296	Profile Sheet 277 of 2	
297	Profile Sheet 278 of 2	
298	Profile Sheet 279 of 2	
299	Profile Sheet 280 of 2	
300	Profile Sheet 281 of 2	
301	Profile Sheet 282 of 2	
302	Profile Sheet 283 of 2	
303	Profile Sheet 284 of 2	
304	Profile Sheet 285 of 2	
305	Profile Sheet 286 of 2	
306	Profile Sheet 287 of 2	
307	Profile Sheet 288 of 2	
308	Profile Sheet 289 of 2	
309	Profile Sheet 290 of 2	
310	Profile Sheet 291 of 2	
311	Profile Sheet 292 of 2	
312	Profile Sheet 293 of 2	
313	Profile Sheet 294 of 2	
314	Profile Sheet 295 of 2	
315	Profile Sheet 296 of 2	
316	Profile Sheet 297 of 2	
317	Profile Sheet 298 of 2	
318	Profile Sheet 299 of 2	
319</		

STATE OF ILLINOIS  
DEPARTMENT OF PUBLIC WORKS & BLDGS  
DIVISION OF HIGHWAYS

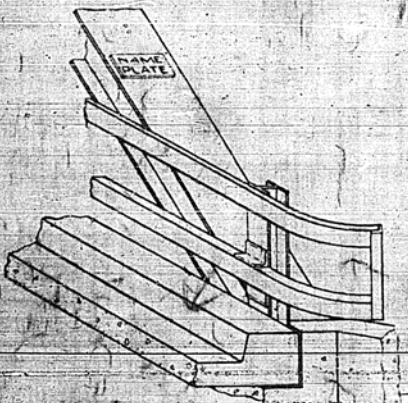
Sheet 1 of 1



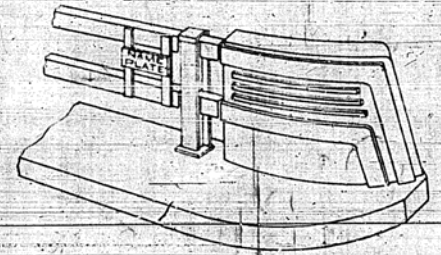
FOR CONCRETE RAILS



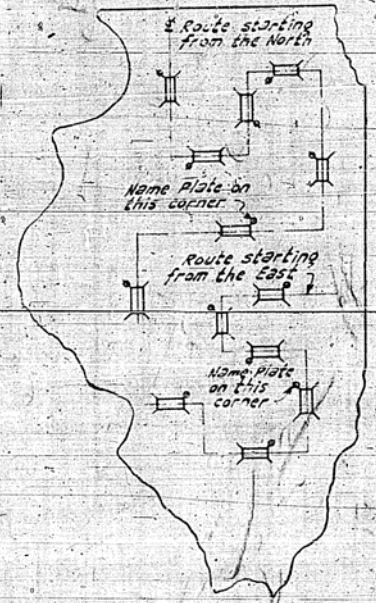
FOR CULVERT HEADWALLS



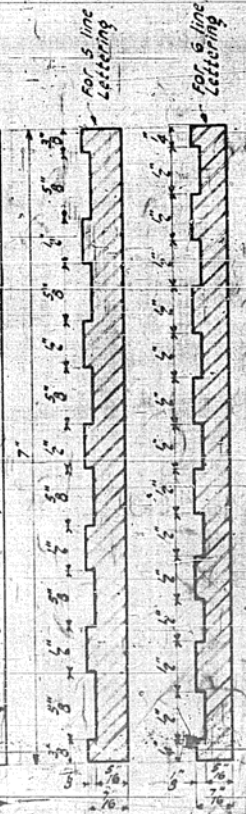
FOR TRUSSES



FOR STEEL RAILS



SEE DESIGN PLANS  
FOR  
LETTERING



SEC. A-A

MATERIAL: Best quality brass or bronze.  
 BORDER: 1/4" square cut and not tapered. Top surface polished.  
 FASTENINGS: FOR CONCRETE RAILS, CULVERT HEADWALLS, BACK OF PLATE: Four lines of 1/2" diameter bolts, cast on back of plate.  
 FOR STEEL TRUSS SPAN: Plate to be fastened on steel member of fabricating shop by bolting around entire perimeter of plate.  
 FOR STEEL RAILS: Plate to be centered on 1/2" of rail post and 1/2" of handrail coping.  
 FOR CONCRETE RAILS: Plate to be centered on 1/2" of rail post and 1/2" of handrail coping.  
 FOR STEEL TRUSS SPAN: Place to end post about five feet above roadway.  
 FOR STEEL RAILS: Place midway between horizontal rail members.  
 FOR SUBWAYS: See design plans for location.

DETAIL OF  
NAME PLATE FOR BRIDGES

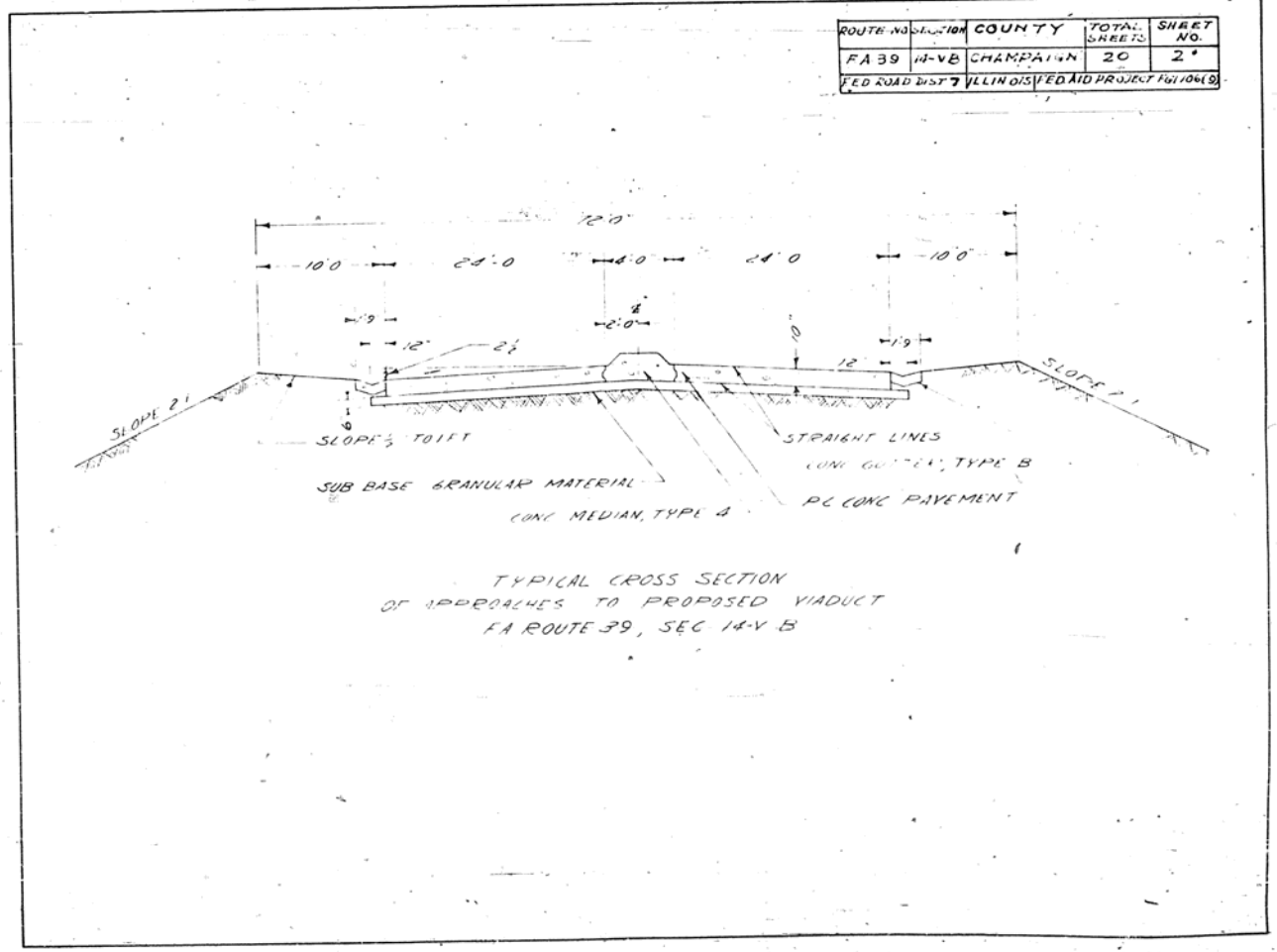
EXAMINED March 4 1953  
 W.C. Hanson  
 ENGINEER OF BRIDGE & TRAFFIC STRUCTS  
 PASSED E.L. Sherry  
 ENGINEER OF DESIGN  
 APPROVED F.J. Barker  
 CHIEF HIGHWAY ENGINEER

STD. No. 2113

ROUTE NO.	SECTION	COUNTY	TOTAL SHEETS	SHEET NO.
FA-39	14-VB	CHAMPAIGN	20	2
FED. ROAD DIST. 7 ILLINOIS			FED. AID PROJECT #10419	

Cover sheet  
 Index of Sheets, County of Champaign, Ill.  
 Cross Section & Sta. 2113  
 Plan and Profile Sta. 2127.00  
 to 2527.00

3	2,004.7	55.1
4	290,316	
5		
6		
7		
8		
9		
10		
11		
12		
13		
14		
15		
16		
17		
18		
19		
20		
21		
22		
23		
24		
25		
26		
27		
28		
29		
30		
31		
32		
33		
34		
35		
36		
37		
38		
39		
40		
41		
42		
43		
44		
45		
46		
47		
48		
49		
50		
51		
52		
53		
54		
55		
56		
57		
58		
59		
60		
61		
62		
63		
64		
65		
66		
67		
68		
69		
70		
71		
72		
73		
74		
75		
76		
77		
78		
79		
80		
81		
82		
83		
84		
85		
86		
87		
88		
89		
90		
91		
92		
93		
94		
95		
96		
97		
98		
99		
100		

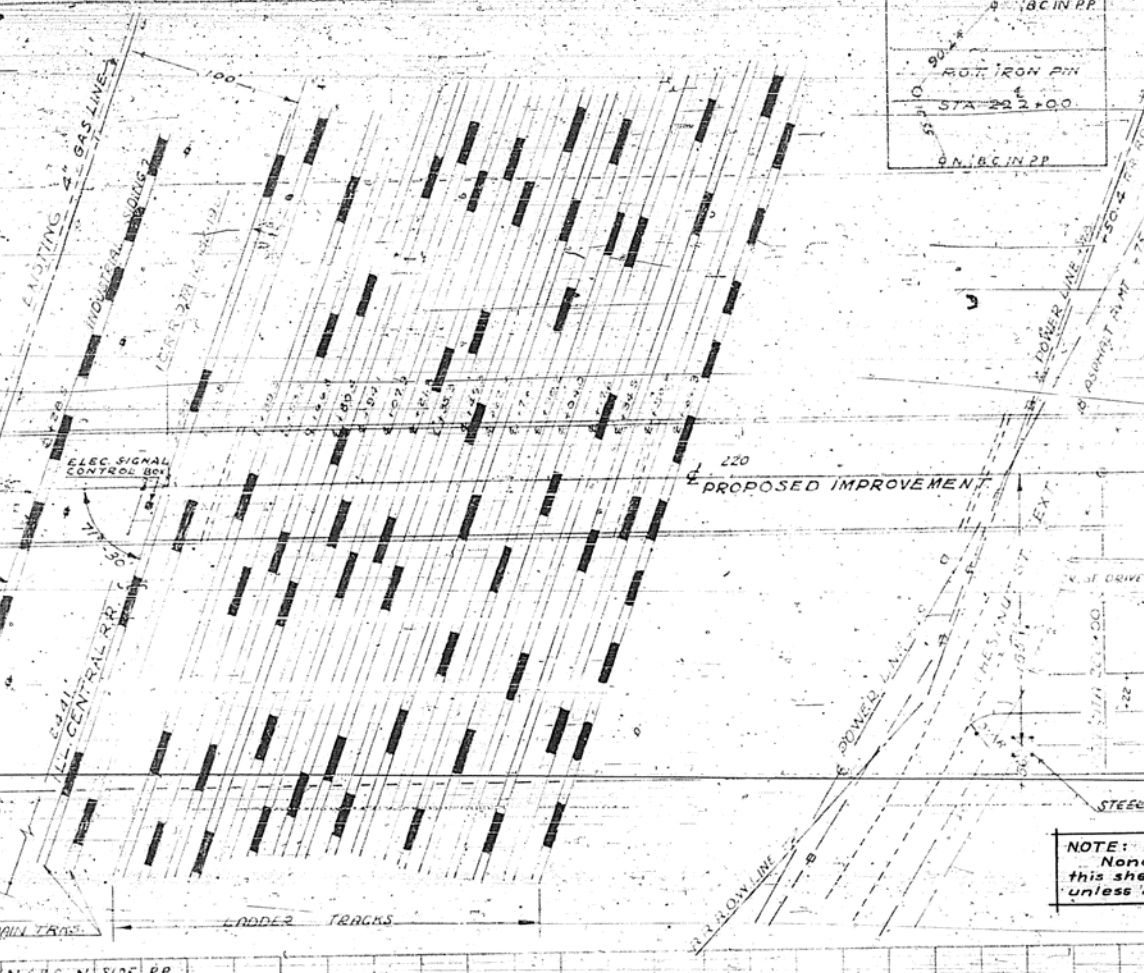




CLARENCE L. REIFSTOCK  
**PROPOSED ROW LINE**  
 DOUBLE OUTLETS TYPE 2 FOR TYPE B GUTTER TO BE BUILT 26' LT STA 211+84 TO 212+22.  
 QUANTITIES FOR TWO OUTLETS:  
 CLASS X CONCRETE - 4.4 CU YDS  
 CAST IRON GRATES - 388 LBS  
 CORRUGATED METAL PIPES 15" x 156 LIN FT  
 COMBINATION CONCRETE CURB & GUTTER TYPE 3 TO BE BUILT 26' LT STA 212+22 TO 214+19.226 LIN FT.  
 26' LT STA 212+22 TO 214+19.226  
 26' LT STA 223+53 TO 225+35.182  
 26' LT STA 223+72 TO 225+35.182  
 26' LT STA 225+13 TO 227+00.454  
 TOTAL 1432 LIN FT

STD 1900-R METHOD TO BE BUILT (SEE SPECIAL DETAIL) STA 215+0.4 TO 215+39.1 ANI  
 222+62.0 TO 222+90  
 QUANTITIES FOR TWO APPROACH SLABS:  
 RCC PIPE 18" x 106' x 306' 50.4 YD  
 REINFORCEMENT BARS 13,390 LBS  
 CLASS X CONC (TRANSITION CURB) 25.0 CU YD  
 GUTTER ON TRANSITION CURB TO BE 3' WIDE AT BRIDGE  
 CON. MEDIAN TYPE 4 - 5' x 5' x 5'

CLARENCE L. REIFSTOCK  
 SEC 6 T19 N. R. 9E 3PM  
 B.M. N. 1/4 SEC. N. SIDE RP  
 21' RT. STA 216+42 ELEV. 740.13

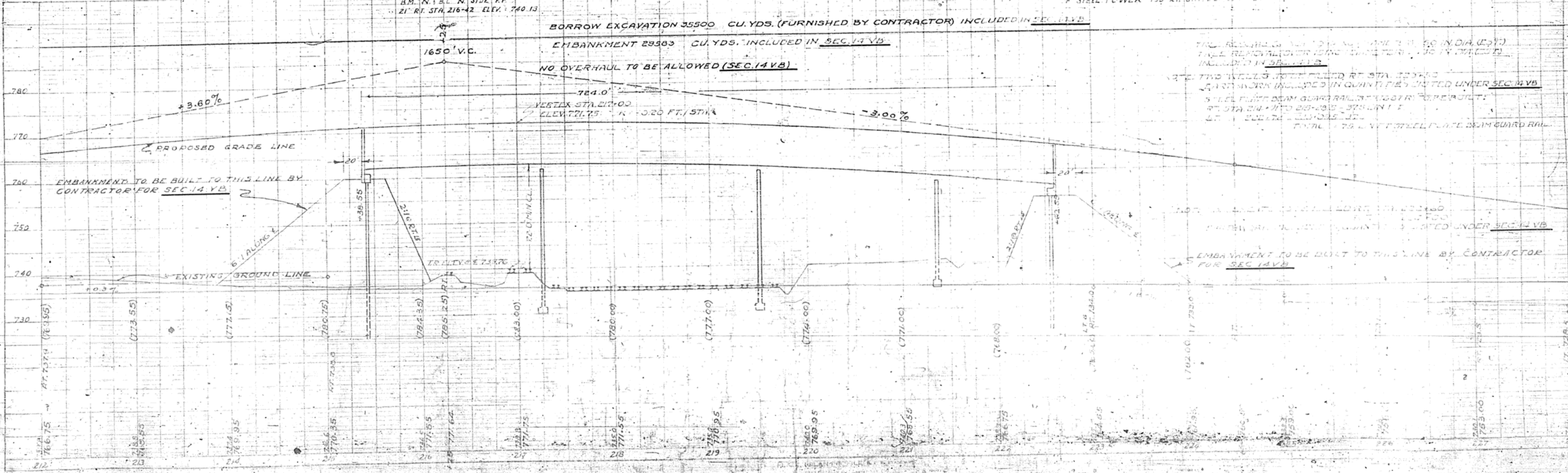


**SPECIAL BRIDGE DESIGN**  
 CONTINUOUS DECK PLATE GIRDER RAIL ROAD GRADE SEPARATION STRUCTURE ON R.C. PILE BENT 49'5" AND OPEN R.C. PIERS 29'21" O.C. ROWY 4' C' RAISED MEDIAN AND 2' O.C. CURBS 4 SPANS 18' 10" x 18' 11" x 15' 10" x 13' 10" / 24' 0" STA 219+00.55 SKEW 18° 30' INCLUDED IN SEC 14-VB

**NOTE:**  
 None of the quantities shown on this sheet are included in Section 14-VB unless noted.

JOE LAMENCOLO  
 B.M. HIGH PT ON E 1/4 SEC. AT BOTTOM OF WELLS OF STEEL TOWER 153' RT. STA 221+80 ELEV. 739.54

BORROW EXCAVATION 35500 CU. YDS. (FURNISHED BY CONTRACTOR) INCLUDED IN SEC. 14-VB  
 EMBANKMENT 29583 CU. YDS. INCLUDED IN SEC. 14-VB  
 NO OVERHAUL TO BE ALLOWED (SEC. 14-VB)



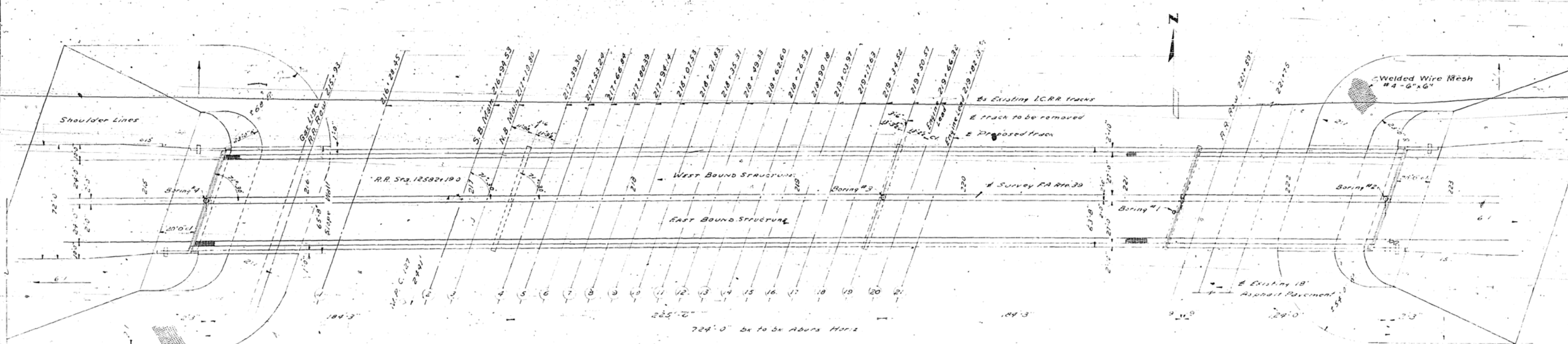
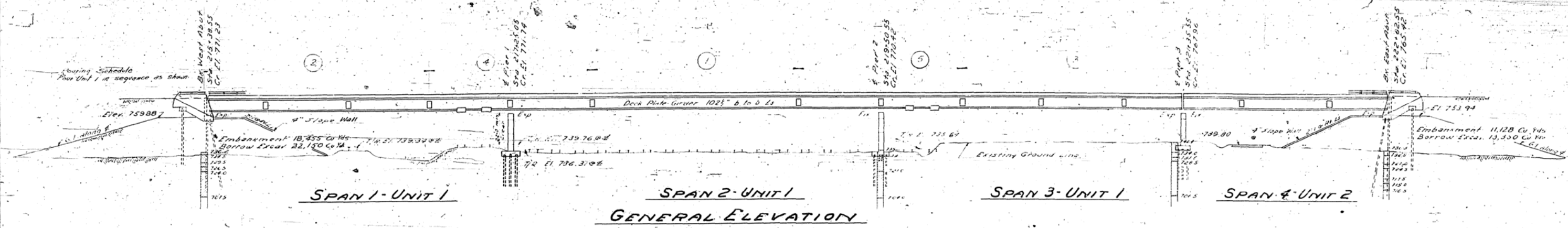
PLAN  
 DRAWN BY: J. J. WILSON  
 CHECKED BY: J. J. WILSON  
 DATE: 10/1/54

PROFILE  
 DRAWN BY: J. J. WILSON  
 CHECKED BY: J. J. WILSON  
 DATE: 10/1/54

B.M. N.V.B.C. N. Side P.P. 21 ft. R.  
Sta. 216+42 Elev. 740.13  
No Existing Structure

STATE OF ILLINOIS  
DEPARTMENT OF PUBLIC WORKS & BUILDINGS  
DIVISION OF HIGHWAYS

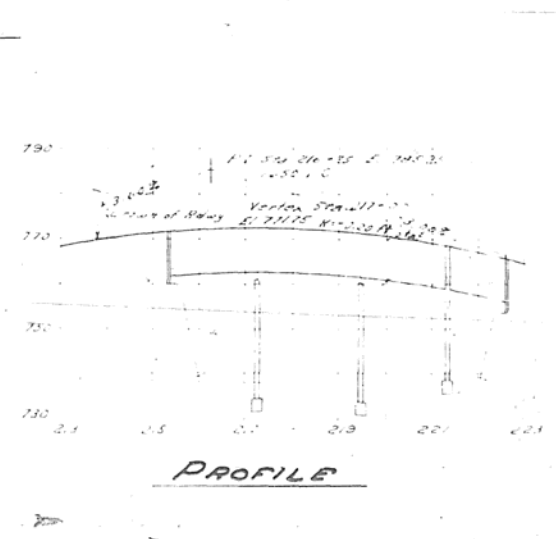
ROUTE NO.	SECTION	COUNTY	TOTAL SHEETS	SHEET NO.	SHEET NO. / SHEETS
39	14-VB-14-VF	CHAMPAIGN	20	4	16



**PLAN**

**BORING DATA**

Boring #	Sta.	Notes
Boring #1	Sta. 221+10	on B
Boring #2	Sta. 222+02	on B
Boring #3	Sta. 219+50	on B
Boring #4	Sta. 215+38	on B



**STRESSES**

10" Structural Steel	18,000 #/sq
16" Reinforcing Bars	20,000 #/sq
14" Reinforcing Bars	18,000 #/sq
12" Reinforcing Bars	16,000 #/sq
10" Reinforcing Bars	14,000 #/sq
8" Reinforcing Bars	12,000 #/sq

**GENERAL PLAN & ELEVATION**  
I.C.R.R. OVERHEAD  
PROJ. FGI 106(9)  
F.A. RT. 39 SEC. 14-VB-VF  
CHAMPAIGN COUNTY  
STA. 219+00.55

**NOTES:**

1. Boreholes per foot of penetration of sampling  
spring, Hammer weight 350# Drop 12"  
Q<sub>u</sub> Unsurpassed compressive strength in tons  
per sq. foot.  
Boring data are shown on plan only as a guide to  
contractors in estimating soil conditions  
which may be encountered.

DESIGNED: V.K. N. L.  
CHECKED: V.K. N. L.  
DRAWN: V.K. N. L.  
CHECKED: V.K. N. L.

EXAMINED: V.M. Romine  
PASSED: [Signature]  
APPROVED: V.K. N. L.

Sept. 23, 1955

**GENERAL NOTES**

Class X Concrete shall be used throughout except as noted hereafter. Concrete shall be used in all of ways.  
The concrete for slab shall be finished in accordance with Article 3112(d) of the Std. Specifications. The concrete for walls shall be poured in one continuous operation between joints. Joints shall be placed in the sequence shown so that there is no open holes but allowed in other.  
Field connections between steel members shall be bolted together. All girders shall be sub-punched hot, bolted firmly together, spaced to proper size (12") & matchmarked with the members are then disassembled, care assembled for shop inspection by the State of Illinois.  
Expansion joints shall be fabricated & erected in accordance with Article 3112(d) of the Std. Specifications.  
Welding shall comply with Article 35.4(3) of the Std. Specifications. All steel members, bolters, base plates, lead plates and anchor bolts shall be fabricated and set in accordance with Article 31.4 of the Std. Specs and are included for payment as Structural Steel.  
Anchor bolts shall be set before all other work is done on piers. Except as otherwise provided, all structural steel shall be one shade east of red lead paint when shown on drawings. Special attention shall be given for notes on painting of metal. Painted steel shall be finished and applied to the work as involved.  
The concrete for abutment walls & pier walls in piers shall be cast in one shade east of red lead paint when shown on drawings. Special attention shall be given for notes on painting of metal. Painted steel shall be finished and applied to the work as involved.  
Holes shall be drilled thru the embankment at proper locations to natural ground level and the abutment piles shall be driven thru these holes. The void space outside of the piles shall be filled with compacted sand. The cost of complying with these requirements shall be included in the unit price bid for Driving Precast Concrete Piles and no additional compensation will be allowed.

**TOTAL BILL OF MATERIALS**

Item	Subsec. 14-VB	Subsec. 14-VF	Total
Class X Concrete	Cu. yds. 1,154.9	849.8	2,004.7
Handrail Concrete	Cu. yds. 55.1		55.1
Reinforcement Bars	Lbs. 171,000	119,270	290,270
Structural Steel	Lbs. 4,316,920	434,450	4,751,370
Metal Handrails	Lbs. 1512	1512	3,024
Open Steel Floor	Sq. Ft. 4320	4320	8,640
Name Plates	EA	1	1
Slope Wall	Sq. Yds. 924		924
Class Excavation for Structures	Cu. Yds. 600		600
Precast Concrete Piles (12")	Lbs. 320		320
Precast Concrete Piles (16")	Lbs. 4240		4240
Test Piles (Precast Concrete-16")	EA	3	3
Precast Concrete Piles (18")	Lbs. 1990		1990
Test Piles (Precast Concrete-18")	EA	2	2
Borrow Excavation	Cu. Yds. 35,500		35,500

I. C. R. R.  
BUILT 195- BY  
STATE OF ILLINOIS  
F.A. RT. 39 SEC. 14-VB  
F.A. PROJECT FGI-106 (9)  
LOADING H20-S16

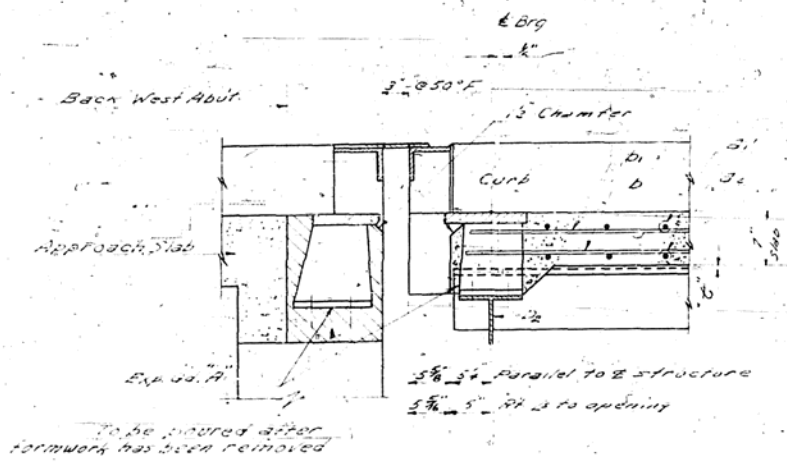
NAME PLATE DATA

DESIGNED *V.M. Romine*  
CHECKED *M. J. G. [unclear]*  
DRAWN *V.M. Romine*  
CHECKED *M. J. G. [unclear]*

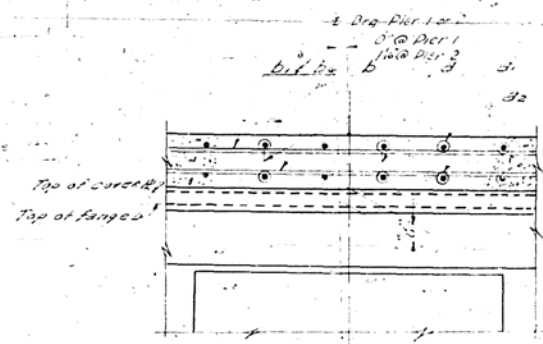
EXAMINED *V.M. Romine*  
DATE *Sept. 23, 1955*  
APPROVED *E.K. [unclear]*

GENERAL DETAILS  
I.C.R.R. OVERHEAD  
F.A. RT. 39 SEC. 14-VB-VF  
CHAMPAIGN COUNTY  
STA. 219+00.55

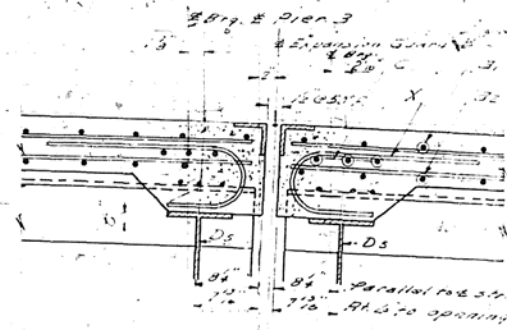




**WEST ABUTMENT**



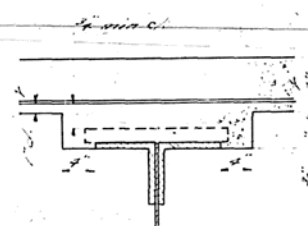
**PIERS 1 & 2**



**PIER 3**

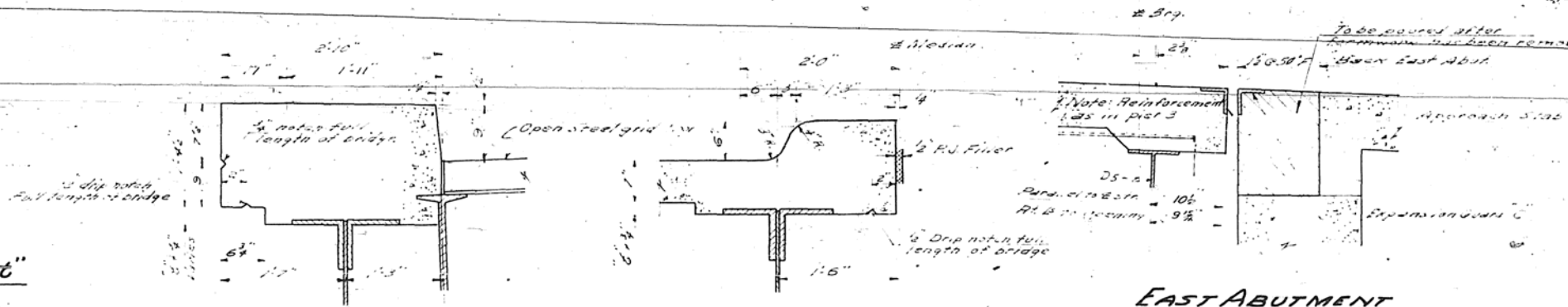
**DIMENSIONS "6"**

Span	West	Pier	Pier	Pier	East
1	1'0"	1'0"	1'0"	1'0"	1'0"
2	1'0"	1'0"	1'0"	1'0"	1'0"
3	1'0"	1'0"	1'0"	1'0"	1'0"
4	1'0"	1'0"	1'0"	1'0"	1'0"
5	1'0"	1'0"	1'0"	1'0"	1'0"
6	1'0"	1'0"	1'0"	1'0"	1'0"
7	1'0"	1'0"	1'0"	1'0"	1'0"
8	1'0"	1'0"	1'0"	1'0"	1'0"
9	1'0"	1'0"	1'0"	1'0"	1'0"
10	1'0"	1'0"	1'0"	1'0"	1'0"
11	1'0"	1'0"	1'0"	1'0"	1'0"
12	1'0"	1'0"	1'0"	1'0"	1'0"



**METHOD OF DETERMINING FILLET HEIGHTS "6"**

After all structural steel has been erected elevations of the top flanges of the beams shall be taken at intervals not to exceed 10 ft. from these elevations subtract the increment of deflections for these points, determined from the D.L. deflection diagram. The elevations so obtained subtracted from the theoretical grade elevations, minus flange thickness, equal the fillet heights above the top flange.



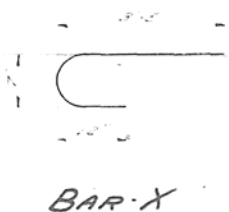
**CURB DETAIL**

**HALF MEDIAN DETAIL**

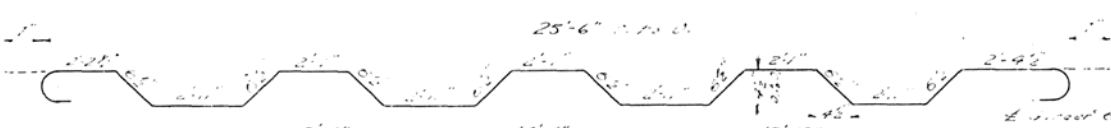
**EAST ABUTMENT**

**FOUR SPANS  
BILL OF MATERIAL**

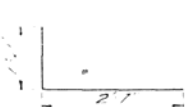
Span	Area	Weight	Length	Notes
8	992	#5	28'0"	
7	1032	#5	25'9"	
3	722	#4	26'3"	
3	722	#4	3'9"	
3	362	#4	1'9"	
5	722	#4	3'6"	
6	1176	#4	29'3"	
2	798	#5	29'6"	
2	440	#4	26'0"	
2	250	#5	26'0"	
2	144	#5	27'0"	
2	120	#5	29'0"	
5	272	#6	33'3"	
		#5	21'3"	
		#5	4'9"	
Total				1154.9
Weight of reinforcement				171,040
Total weight of steel				4,316,920
Quantity of concrete				4320



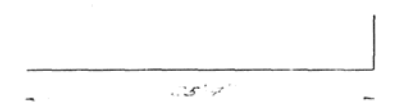
**BAR-X**



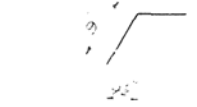
**BAR-d**



**BAR-d3**



**BAR-d2**



**BAR-d4**



**BAR-d5**

Sept 23 1955  
W. J. Romine  
S. J. DeLeonville

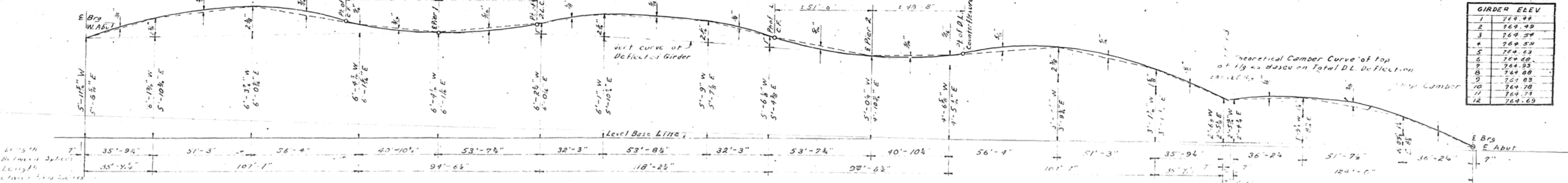
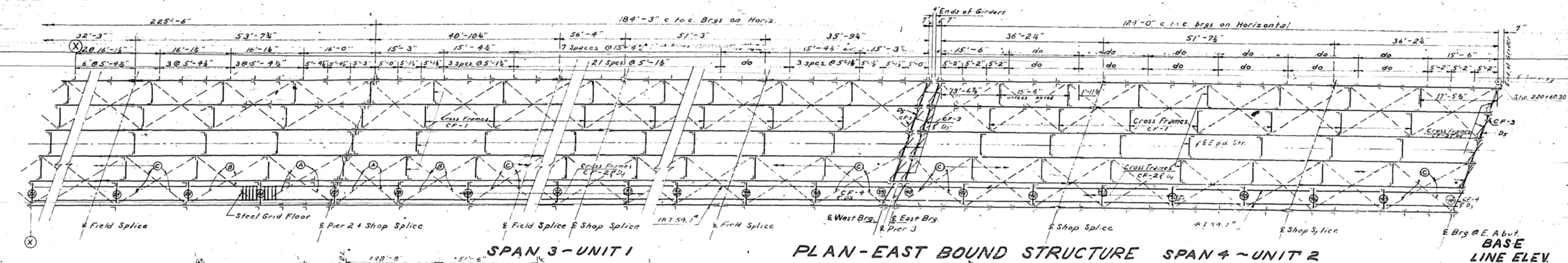
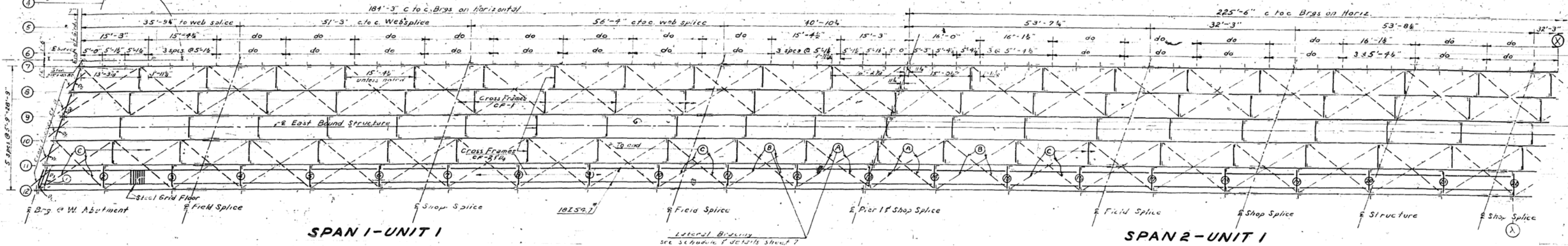
**SUPERSTRUCTURE DETAILS**  
I.C.R.R. OVERHEAD  
F.A. RT. 39 SEC. 14-VBVF  
CHAMPAIGN CO.  
STA. 219+00.55



STATE OF ILLINOIS  
DEPARTMENT OF PUBLIC WORKS & BUILDINGS  
DIVISION OF HIGHWAYS

FA 39 14-VB 20 8 16 SHEETS  
14-VF 16 8 16 SHEETS  
CHAMPAIGN

Note: Framing Plan for West Bound Structure is found east to East Bound Structure except for Cross Frames CF-2 and 18L54.7 assembly which are to be placed between Girders 1 & 2



GIRDER ELEV.	ELEV.
1	769.99
2	769.99
3	769.99
4	769.99
5	769.99
6	769.99
7	769.99
8	769.99
9	769.99
10	769.99
11	769.99
12	769.99

TYPICAL CAMBER DIAGRAM FOR ALL GIRDERS  
EAST & WEST BOUND STRUCTURES

COMPILED J. N. H. L.  
CHECKED V. W. Romo  
DESIGNED J. N. H. L.  
DATE Sept 23, 50

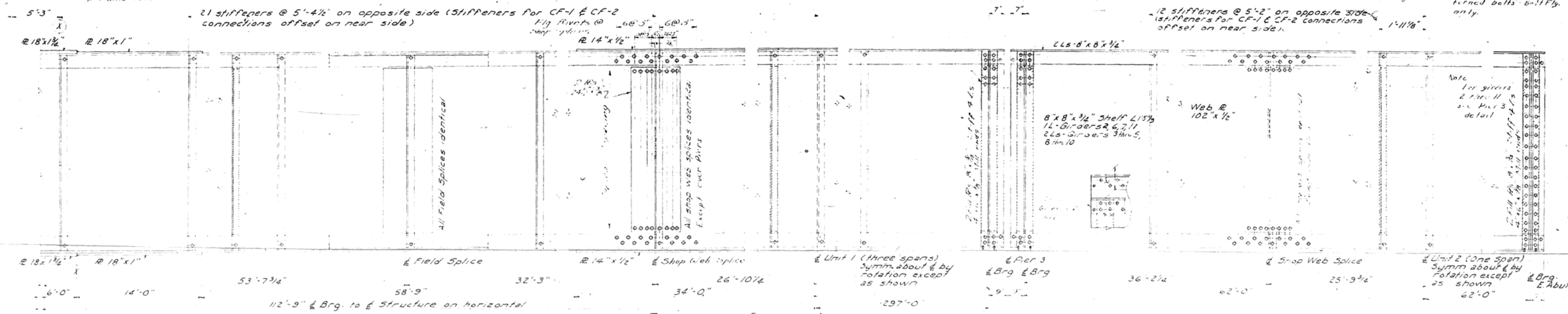
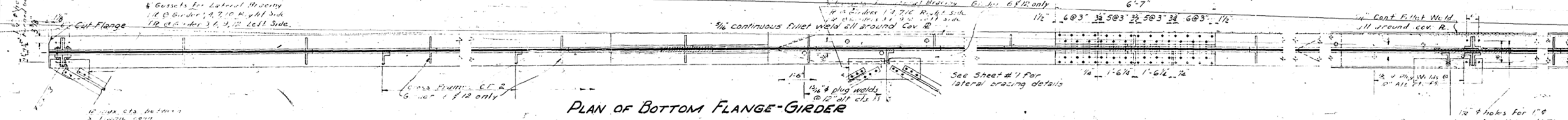
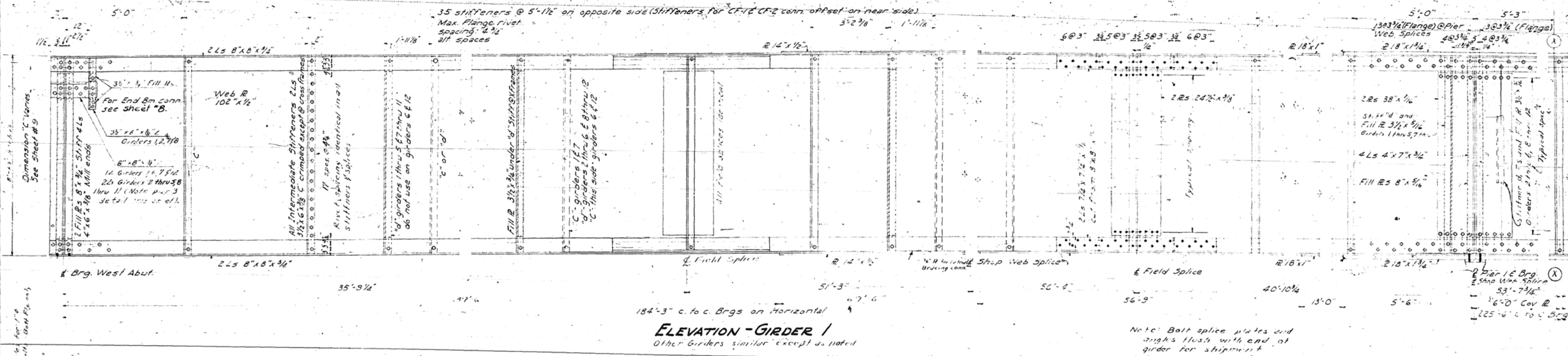
W denotes West bound structure - Girders 1 thru 6  
E denotes East bound structure - Girders 7 thru 12

Deflection due to steel - 40%  
Deflection due to concrete - 60%

FRAMING PLAN  
I.C.R.R. OVERHEAD  
FA RT. 39 SEC. 14-VB-VF  
CHAMPAIGN COUNTY  
STA. 219+00.55

STATE OF ILLINOIS  
DEPARTMENT OF PUBLIC WORKS & BUILDINGS  
DIVISION OF HIGHWAYS

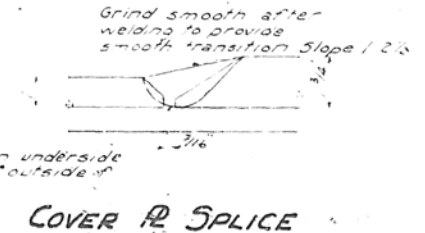
ROUTE NO.	SECTION	COUNTY	TOTAL SHEETS	SHEET NO.
39	14-VF	CHAMPAIGN	20	9
SHEET NO. 6				



DESIGNED: J. V. R. M.  
EXAMINED: J. M. Romine  
DRAWN: J. R. J. Gandy  
CHECKED: J. C. J.

EXAMINED: J. M. Romine  
PASSED: J. M. Romine  
APPROVED: J. M. Romine

Sept. 27, 1952



HALF ELEVATION  
I.C.R.R. OVERHEAD  
F.A. RT. 39. SEC. 14-VB-VF  
CHAMPAIGN COUNTY





STATE OF ILLINOIS  
DEPARTMENT OF PUBLIC WORKS & BUILDINGS  
DIVISION OF HIGHWAYS

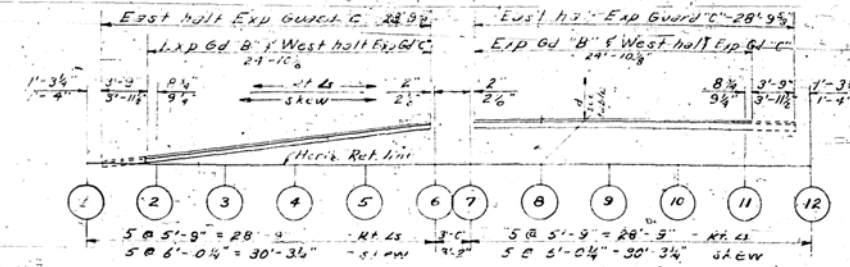
PROJECT NO.	SECTION	CONTRACT NO.	SHEET NO.	SHEET TOTAL
1.A.33	14718	CHAMPAIGN	20	16 SHEETS

**DIMENSIONS "a" & "b"**

Girder	West Bound		East Bound	
	a	b	a	b
1	1'-3 1/2"	1'-3 3/4"	1'-4 1/4"	1'-4 3/4"
2	1'-2 1/2"	1'-2 3/4"	1'-4 1/4"	1'-4 3/4"
3	1'-2 1/2"	1'-2 3/4"	1'-4 1/4"	1'-4 3/4"
4	1'-2 1/2"	1'-2 3/4"	1'-3 3/4"	1'-3 3/4"
5	1'-2 1/2"	1'-2 3/4"	1'-3 3/4"	1'-3 3/4"
6	1'-2 1/2"	1'-2 3/4"	1'-3 3/4"	1'-3 3/4"
7	1'-2 1/2"	1'-2 3/4"	1'-3 3/4"	1'-3 3/4"
8	1'-2 1/2"	1'-2 3/4"	1'-2 3/4"	1'-2 3/4"
9	1'-2 1/2"	1'-2 3/4"	1'-2 3/4"	1'-2 3/4"
10	1'-2 1/2"	1'-2 3/4"	1'-2 3/4"	1'-2 3/4"
11	1'-3"	1'-3"	1'-3 3/4"	1'-3 3/4"
12	1'-3"	1'-2 3/4"	1'-2 3/4"	1'-2 3/4"
13	1'-2 1/2"	1'-2 3/4"	1'-2 3/4"	1'-2 3/4"
14	1'-3 1/2"	1'-3 3/4"	1'-2 3/4"	1'-2 3/4"
15	1'-3 1/2"	1'-3 3/4"	1'-2 3/4"	1'-2 3/4"
16	1'-3 1/2"	1'-3 3/4"	1'-2 3/4"	1'-2 3/4"
17	1'-3 1/2"	1'-2 3/4"	1'-2 3/4"	1'-2 3/4"
18	1'-3"	1'-2 3/4"	1'-2 3/4"	1'-2 3/4"
19	1'-2 1/2"	1'-2 3/4"	1'-2 3/4"	1'-2 3/4"
20	1'-2 1/2"	1'-2 3/4"	1'-2 3/4"	1'-2 3/4"
21	1'-2 1/2"	1'-2 3/4"	1'-2 3/4"	1'-2 3/4"
22	1'-2 1/2"	1'-2 3/4"	1'-2 3/4"	1'-2 3/4"
23	1'-2 1/2"	1'-2 3/4"	1'-2 3/4"	1'-2 3/4"
24	1'-3"	1'-2 3/4"	1'-2 3/4"	1'-2 3/4"
25	1'-3 1/2"	1'-2 3/4"	1'-2 3/4"	1'-2 3/4"
26	1'-3 1/2"	1'-2 3/4"	1'-2 3/4"	1'-2 3/4"
27	1'-2 1/2"	1'-2 3/4"	1'-2 3/4"	1'-2 3/4"
28	1'-3 1/2"	1'-2 3/4"	1'-2 3/4"	1'-2 3/4"
29	1'-3"	1'-2 3/4"	1'-2 3/4"	1'-2 3/4"
30	1'-2 1/2"	1'-2 3/4"	1'-2 3/4"	1'-2 3/4"
31	1'-2 1/2"	1'-2 3/4"	1'-1 3/4"	1'-2 3/4"
32	1'-2 1/2"	1'-2 3/4"	1'-1 3/4"	1'-2 3/4"
33	1'-3 1/2"	1'-2 3/4"	1'-1 3/4"	1'-2 3/4"
34	1'-3 1/2"	1'-3"	1'-1 3/4"	1'-2 3/4"
35	1'-3 1/2"	1'-2 3/4"	1'-1 3/4"	1'-2 3/4"
36	1'-3 1/2"	1'-3 3/4"	1'-1 3/4"	1'-2 3/4"
37	1'-3 1/2"	1'-3 3/4"	1'-1 3/4"	1'-2 3/4"
38	1'-3 1/2"	1'-3"	1'-1 3/4"	1'-2 3/4"
39	1'-4 1/2"	1'-3 3/4"	1'-1 3/4"	1'-2 3/4"
40	1'-4 1/2"	1'-3 3/4"	1'-1 3/4"	1'-2 3/4"
41	1'-4 1/2"	1'-3 3/4"	1'-1 3/4"	1'-2 3/4"
42	1'-4 1/2"	1'-3 3/4"	1'-1 3/4"	1'-2 3/4"
43	1'-4 1/2"	1'-3 3/4"	1'-1 3/4"	1'-2 3/4"
44	1'-4 1/2"	1'-3 3/4"	1'-1 3/4"	1'-2 3/4"
45	1'-4 1/2"	1'-3 3/4"	1'-1 3/4"	1'-2 3/4"
46	1'-4 1/2"	1'-3 3/4"	1'-1 3/4"	1'-2 3/4"
47	1'-4 1/2"	1'-3 3/4"	1'-1 3/4"	1'-2 3/4"
48	1'-4 1/2"	1'-4 1/4"	1'-2 3/4"	1'-2 3/4"

**DIMENSIONS "c"**

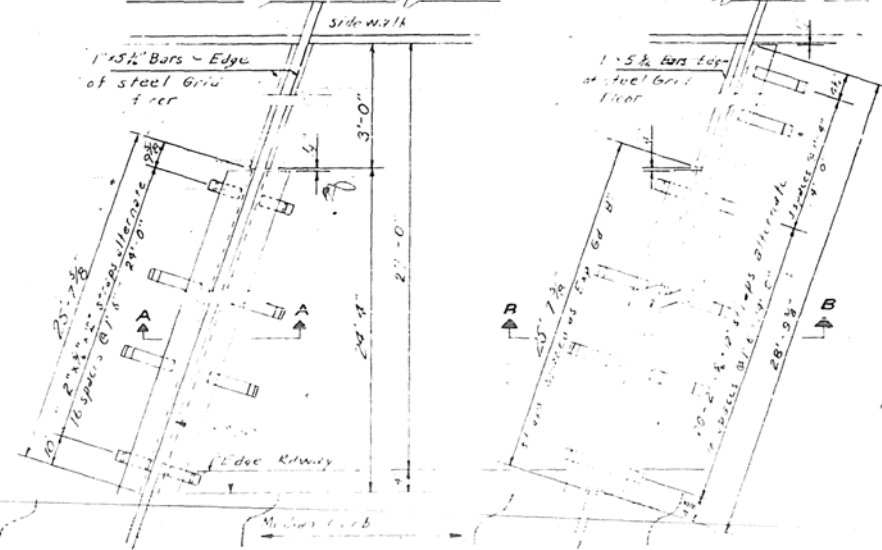
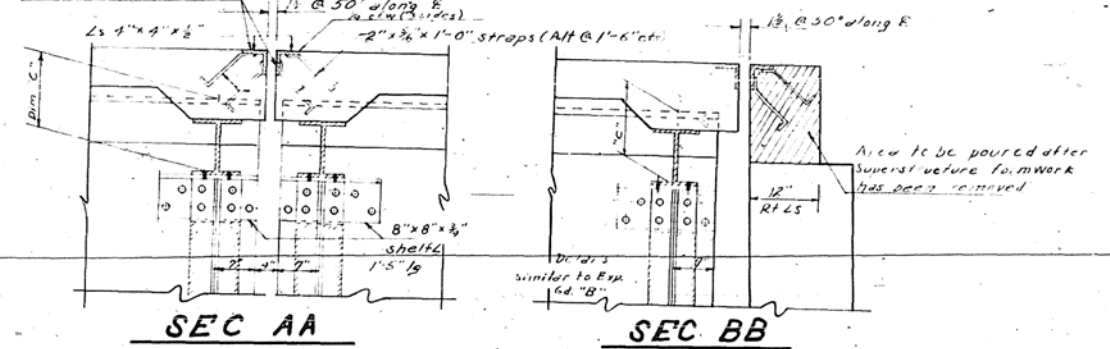
Girder	West Abut	West Pier 3	East Pier 3	East Abut
1	1'-0 1/2"	—	1'-0 1/2"	1'-0 1/2"
2	1'-2 1/2"	1'-0 1/2"	1'-0 1/2"	1'-0 1/2"
3	1'-2 1/2"	1'-1 1/2"	1'-1 1/2"	1'-0 1/2"
4	1'-2 1/2"	1'-1 1/2"	1'-1 1/2"	1'-1 1/2"
5	1'-3 1/2"	1'-1 1/2"	1'-1 1/2"	1'-1 1/2"
6	1'-4 1/2"	1'-1 1/2"	1'-1 1/2"	1'-1 1/2"
7	1'-3 1/2"	1'-5 1/2"	1'-5 1/2"	1'-6"
8	1'-2 1/2"	1'-4 1/2"	1'-4 1/2"	1'-4 1/2"
9	1'-2 1/2"	1'-3 3/4"	1'-3 3/4"	1'-3 3/4"
10	1'-1 1/2"	1'-2 3/4"	1'-2 3/4"	1'-2 3/4"
11	1'-1 1/2"	1'-1 3/4"	1'-1 3/4"	1'-1 1/2"
12	1'-0 1/2"	—	—	—



**EXPANSION GUARD "B" & "C" PROFILE DIMENSIONS "d"**

Exp. Gu.	1	2	3	4	5	6	7	8	9	10	11	12
"B"	0"	1"	2"	2 1/2"	3 1/2"	4 1/2"	5 1/2"	6 1/2"	7 1/2"	8 1/2"	9 1/2"	10 1/2"
"C"	0"	1 1/2"	2 1/2"	3 1/2"	4 1/2"	5 1/2"	6 1/2"	7 1/2"	8 1/2"	9 1/2"	10 1/2"	11 1/2"

3/8" holes @ 2" cts for 3/8" bolts. All bolts shall be burned sawed or clipped off flush with deck angle after all forms are removed.



Note: The Expansion Guards B & C shall be fabricated to fit roadway. Est. wt. included in bill of materials on sheet 12-3070-10a.

EXPANSION GUARD "B" PIER 3 - NORTH HALF  
EXPANSION GUARD "C" EAST ABUT - NORTH HALF

**EXPANSION GUARDS "B" & "C" DIMENSIONS "a", "b" & "c"**

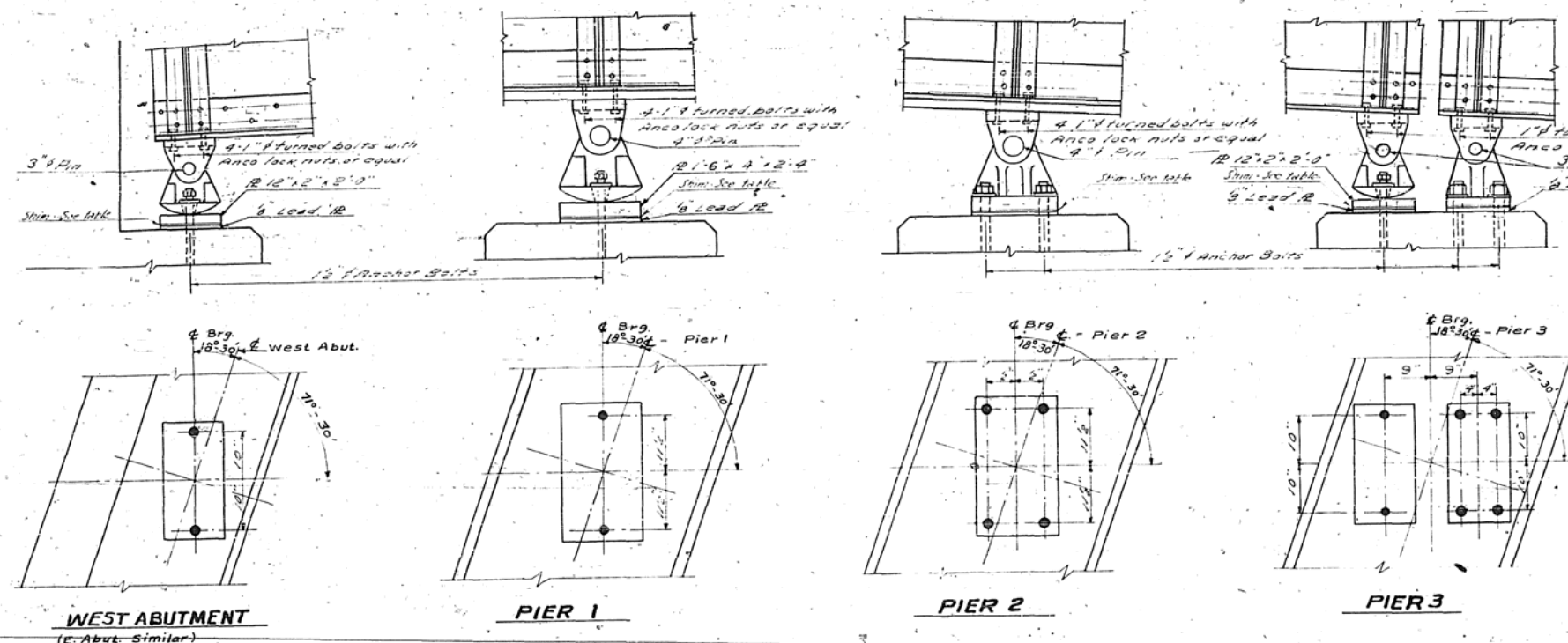
I.C.R.R. OVERHEAD  
FA. RT 39 SEC. 17-18-VF  
CHAMPAIGN COUNTY  
STA. 219+00.55

DESIGNED	W. M. Nelson	EXAMINED	J. W. Thomas
CHECKED	W. M. Nelson	PASSED	J. W. Thomas
DRAWN	J. R. Nelson	APPROVED	W. M. Nelson
CHECKED	W. M. Nelson		

HALF CURB SEC. STRAP DETAIL

STATE OF ILLINOIS  
DEPARTMENT OF PUBLIC WORKS & BUILDINGS  
DIVISION OF HIGHWAYS

ROUTE NO.	SECTION	PROJECT	SHEETS	NO.	SHEET NO.
39	14-VB	CHAMPAIGN	20	13	
	14-VF		16	13	



THICKNESS OF BEARING SHIMS - " "

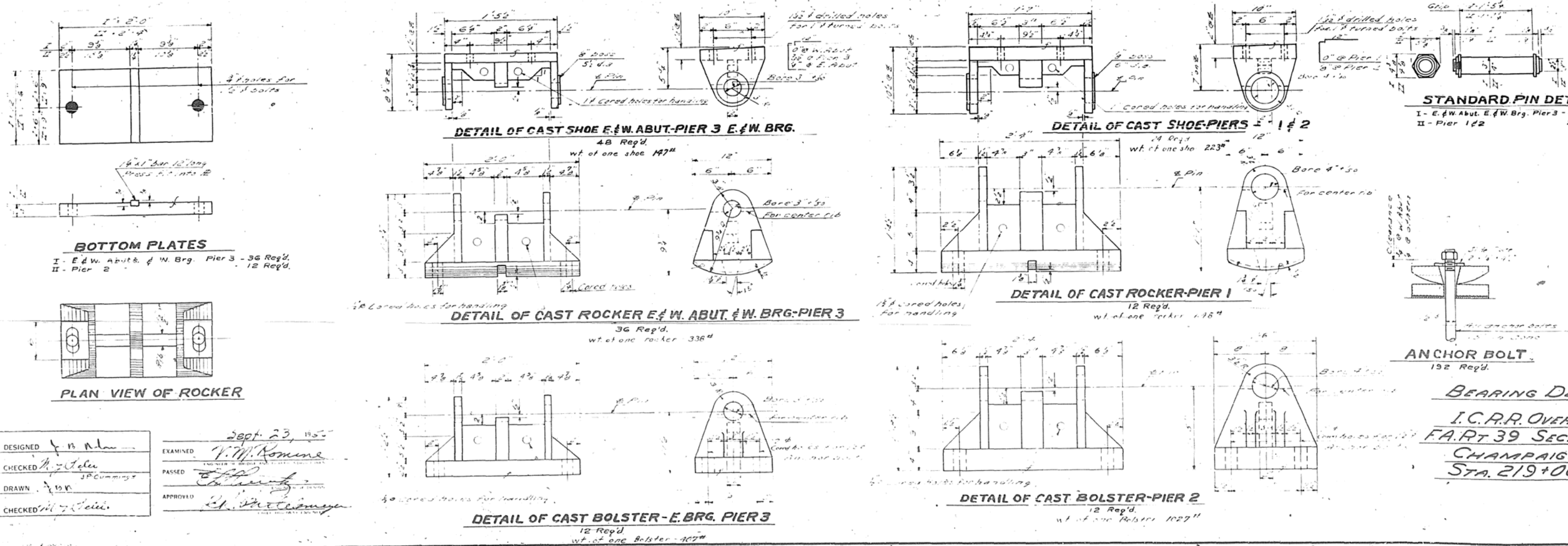
Castings No.	1	2	3	4	5	6	7	8	9	10	11	12
West Abut	0"	3/16"	0"	3/16"	0"	3/16"	0"	3/16"	0"	3/16"	0"	3/16"
Pier 1	0"	3/16"	0"	3/16"	0"	3/16"	0"	3/16"	0"	3/16"	0"	3/16"
Pier 2	0"	3/16"	0"	3/16"	0"	3/16"	0"	3/16"	0"	3/16"	0"	3/16"
Pier 3	0"	3/16"	0"	3/16"	0"	3/16"	0"	3/16"	0"	3/16"	0"	3/16"
West Abut	0"	3/16"	0"	3/16"	0"	3/16"	0"	3/16"	0"	3/16"	0"	3/16"
Pier 1	0"	3/16"	0"	3/16"	0"	3/16"	0"	3/16"	0"	3/16"	0"	3/16"
Pier 2	0"	3/16"	0"	3/16"	0"	3/16"	0"	3/16"	0"	3/16"	0"	3/16"
Pier 3	0"	3/16"	0"	3/16"	0"	3/16"	0"	3/16"	0"	3/16"	0"	3/16"

Abutment & Pier 3 Sum = 12' x 2'-0"  
Pier 1 & 2 Sum = 16' x 2'-4"

NOTE:  
All castings shall be  
Cast Steel.  
Estimated total wt of castings, pins,  
plates, anchor bolts & lead plates  
included in Bill of Material on  
sheet 4 is 73,980

DETAIL OF 1/4" SLIDE # FOR ROCKERS  
96 Req'd.

ELEVATIONS & PLANS OF BEARING DETAILS

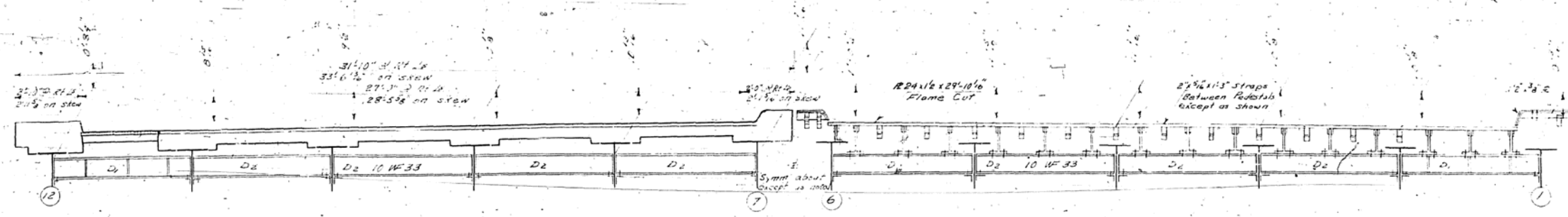


DESIGNED *J. B. Nelson*  
CHECKED *H. J. Selig*  
DRAWN *J. B. Nelson*  
CHECKED *H. J. Selig*

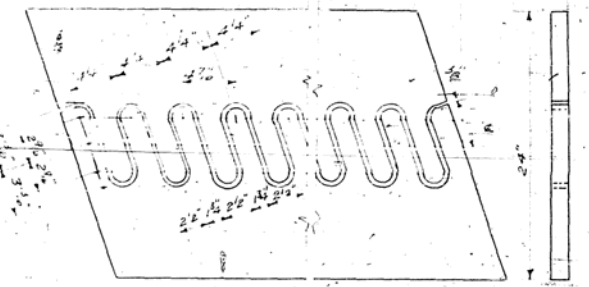
EXAMINED *V. M. Romane*  
PASSED *[Signature]*  
APPROVED *[Signature]*

Sept. 23, 1915

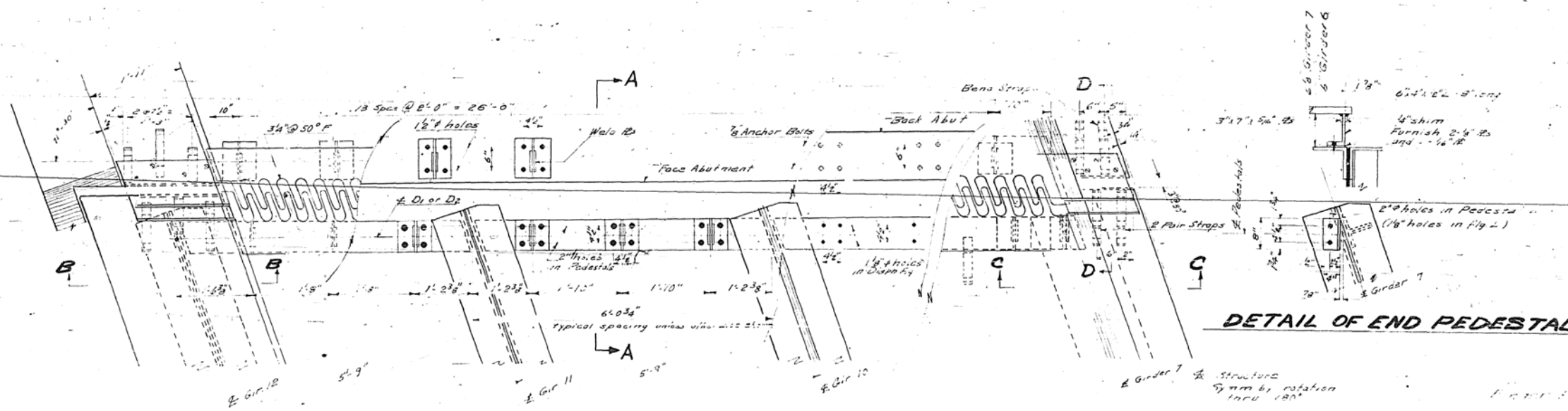
BEARING DETAILS  
I.C.R.R. OVERHEAD  
F.A.R.T. 39 SEC. 14-VB-VF  
CHAMPAIGN CO.  
STA. 219+00.55



HALF ELEVATION OF ROADWAY  
HALF ELEVATION OF STEEL FABRICATION  
**ELEVATION-EXPANSION GUARD-A**  
WEST ABUTMENT



**DETAIL OF FLAME CUT PLATE**  
Mark work after cutting

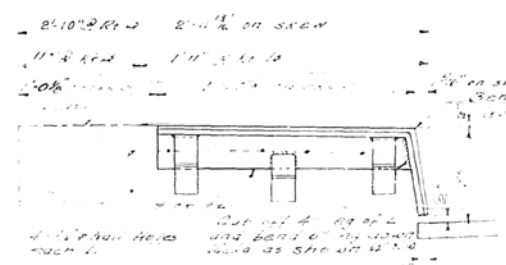


**PLAN-EXPANSION GUARD A**

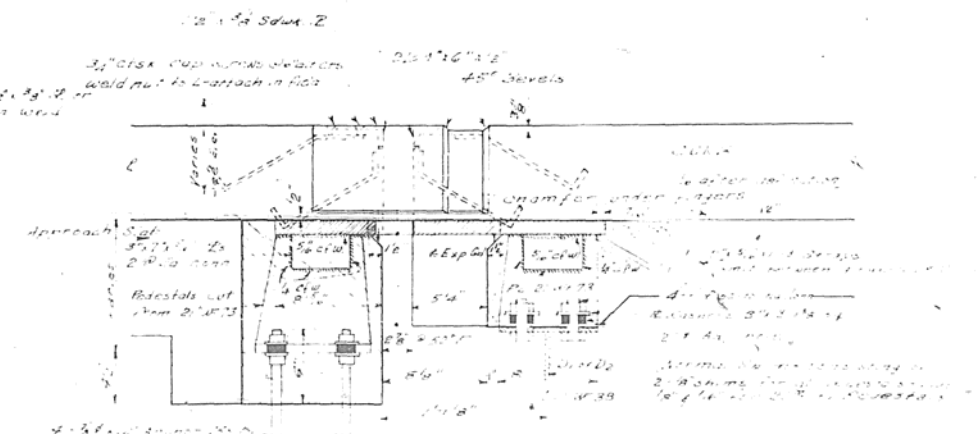
**DETAIL OF END PEDESTAL**

**NOTES**

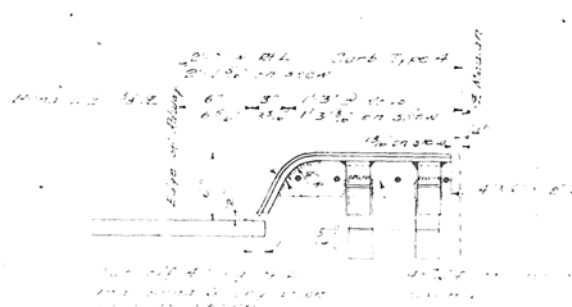
1. All steel plates shall be 1/2" thick  
2. provided by Art 55-4.1 of the Ill. Code  
3. The roadway expansion shall be fabricated and erected in  
4. the roadway expansion shall be fabricated and erected in  
5. the roadway expansion shall be fabricated and erected in  
6. the roadway expansion shall be fabricated and erected in  
7. the roadway expansion shall be fabricated and erected in  
8. the roadway expansion shall be fabricated and erected in  
9. the roadway expansion shall be fabricated and erected in  
10. the roadway expansion shall be fabricated and erected in  
11. the roadway expansion shall be fabricated and erected in  
12. the roadway expansion shall be fabricated and erected in  
13. the roadway expansion shall be fabricated and erected in  
14. the roadway expansion shall be fabricated and erected in  
15. the roadway expansion shall be fabricated and erected in  
16. the roadway expansion shall be fabricated and erected in  
17. the roadway expansion shall be fabricated and erected in  
18. the roadway expansion shall be fabricated and erected in  
19. the roadway expansion shall be fabricated and erected in  
20. the roadway expansion shall be fabricated and erected in  
21. the roadway expansion shall be fabricated and erected in  
22. the roadway expansion shall be fabricated and erected in  
23. the roadway expansion shall be fabricated and erected in  
24. the roadway expansion shall be fabricated and erected in  
25. the roadway expansion shall be fabricated and erected in  
26. the roadway expansion shall be fabricated and erected in  
27. the roadway expansion shall be fabricated and erected in  
28. the roadway expansion shall be fabricated and erected in  
29. the roadway expansion shall be fabricated and erected in  
30. the roadway expansion shall be fabricated and erected in  
31. the roadway expansion shall be fabricated and erected in  
32. the roadway expansion shall be fabricated and erected in  
33. the roadway expansion shall be fabricated and erected in  
34. the roadway expansion shall be fabricated and erected in  
35. the roadway expansion shall be fabricated and erected in  
36. the roadway expansion shall be fabricated and erected in  
37. the roadway expansion shall be fabricated and erected in  
38. the roadway expansion shall be fabricated and erected in  
39. the roadway expansion shall be fabricated and erected in  
40. the roadway expansion shall be fabricated and erected in  
41. the roadway expansion shall be fabricated and erected in  
42. the roadway expansion shall be fabricated and erected in  
43. the roadway expansion shall be fabricated and erected in  
44. the roadway expansion shall be fabricated and erected in  
45. the roadway expansion shall be fabricated and erected in  
46. the roadway expansion shall be fabricated and erected in  
47. the roadway expansion shall be fabricated and erected in  
48. the roadway expansion shall be fabricated and erected in  
49. the roadway expansion shall be fabricated and erected in  
50. the roadway expansion shall be fabricated and erected in  
51. the roadway expansion shall be fabricated and erected in  
52. the roadway expansion shall be fabricated and erected in  
53. the roadway expansion shall be fabricated and erected in  
54. the roadway expansion shall be fabricated and erected in  
55. the roadway expansion shall be fabricated and erected in  
56. the roadway expansion shall be fabricated and erected in  
57. the roadway expansion shall be fabricated and erected in  
58. the roadway expansion shall be fabricated and erected in  
59. the roadway expansion shall be fabricated and erected in  
60. the roadway expansion shall be fabricated and erected in  
61. the roadway expansion shall be fabricated and erected in  
62. the roadway expansion shall be fabricated and erected in  
63. the roadway expansion shall be fabricated and erected in  
64. the roadway expansion shall be fabricated and erected in  
65. the roadway expansion shall be fabricated and erected in  
66. the roadway expansion shall be fabricated and erected in  
67. the roadway expansion shall be fabricated and erected in  
68. the roadway expansion shall be fabricated and erected in  
69. the roadway expansion shall be fabricated and erected in  
70. the roadway expansion shall be fabricated and erected in  
71. the roadway expansion shall be fabricated and erected in  
72. the roadway expansion shall be fabricated and erected in  
73. the roadway expansion shall be fabricated and erected in  
74. the roadway expansion shall be fabricated and erected in  
75. the roadway expansion shall be fabricated and erected in  
76. the roadway expansion shall be fabricated and erected in  
77. the roadway expansion shall be fabricated and erected in  
78. the roadway expansion shall be fabricated and erected in  
79. the roadway expansion shall be fabricated and erected in  
80. the roadway expansion shall be fabricated and erected in  
81. the roadway expansion shall be fabricated and erected in  
82. the roadway expansion shall be fabricated and erected in  
83. the roadway expansion shall be fabricated and erected in  
84. the roadway expansion shall be fabricated and erected in  
85. the roadway expansion shall be fabricated and erected in  
86. the roadway expansion shall be fabricated and erected in  
87. the roadway expansion shall be fabricated and erected in  
88. the roadway expansion shall be fabricated and erected in  
89. the roadway expansion shall be fabricated and erected in  
90. the roadway expansion shall be fabricated and erected in  
91. the roadway expansion shall be fabricated and erected in  
92. the roadway expansion shall be fabricated and erected in  
93. the roadway expansion shall be fabricated and erected in  
94. the roadway expansion shall be fabricated and erected in  
95. the roadway expansion shall be fabricated and erected in  
96. the roadway expansion shall be fabricated and erected in  
97. the roadway expansion shall be fabricated and erected in  
98. the roadway expansion shall be fabricated and erected in  
99. the roadway expansion shall be fabricated and erected in  
100. the roadway expansion shall be fabricated and erected in



**SEC-B-B**



**SEC-A-A**



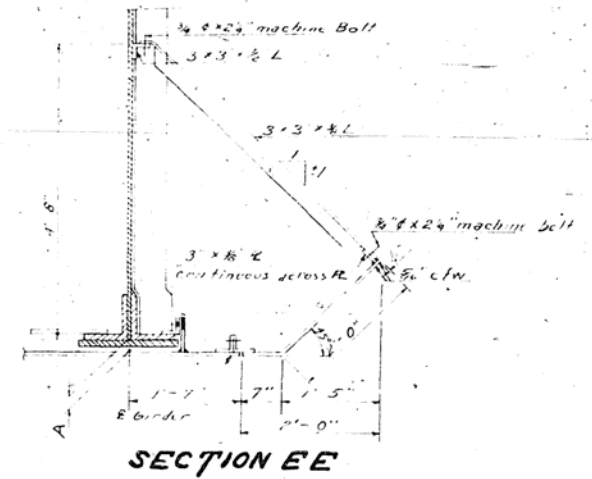
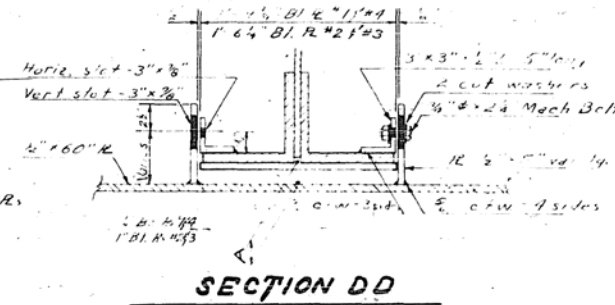
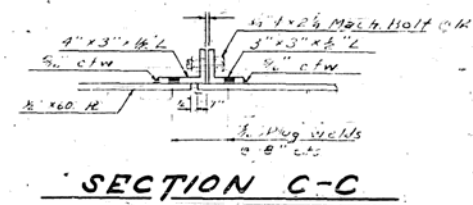
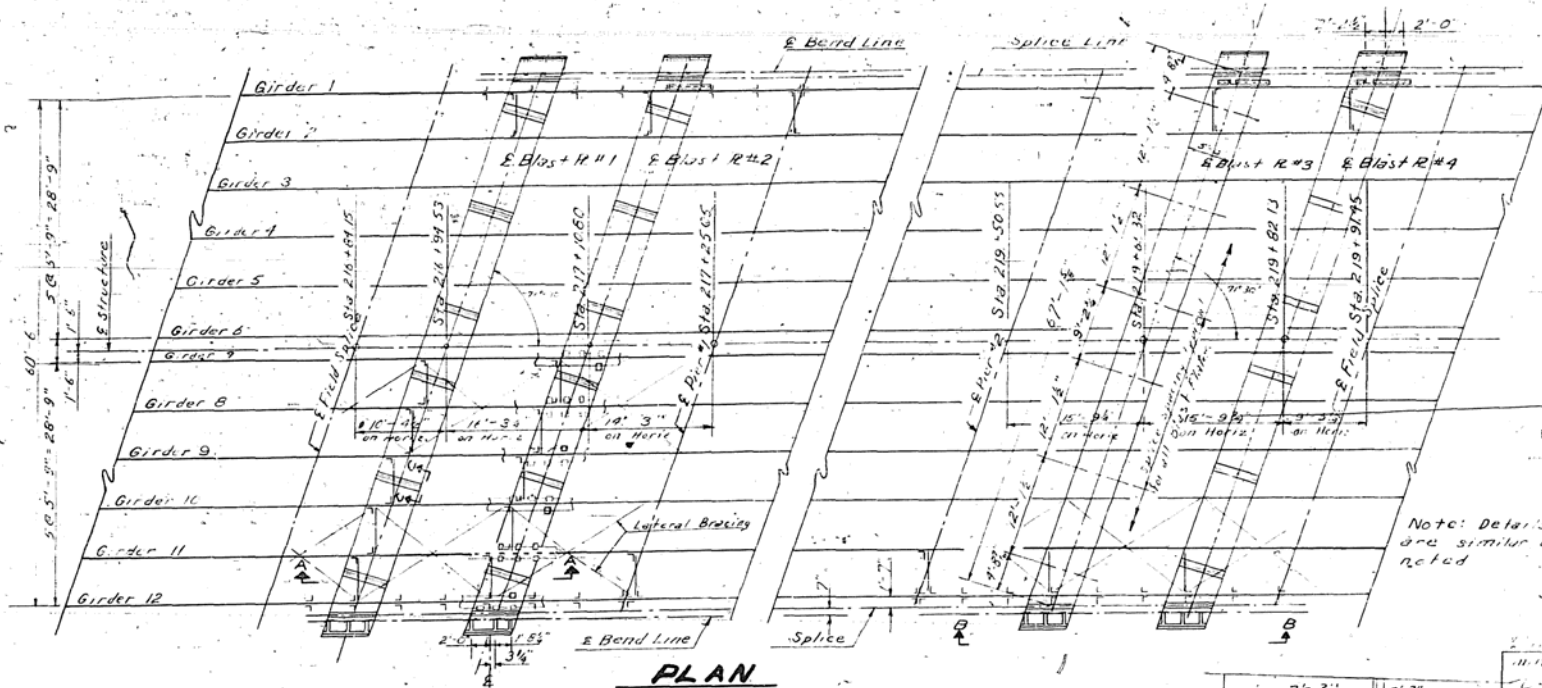
**SEC-C-C**



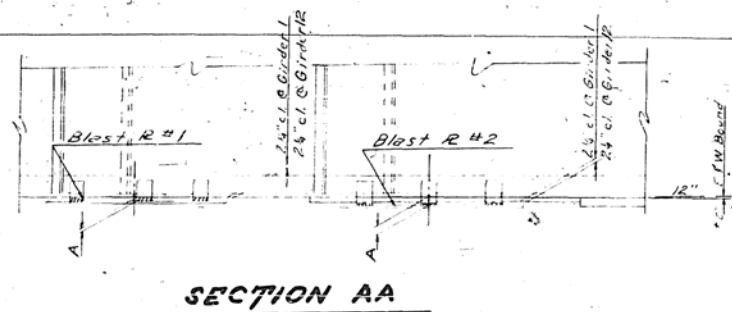
**SEC-D-D**

DATE: Sept 23, 1935  
DRAWN BY: J. H. Adams  
CHECKED BY: M. J. Pate  
APPROVED BY: L. W. Adams

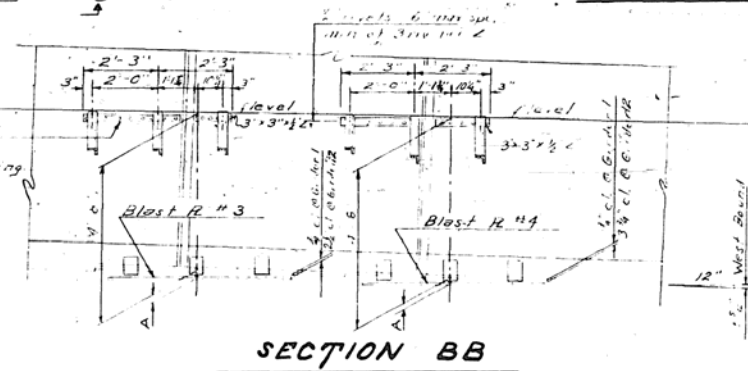
**EXPANSION GUARD A**  
**(WEST ABUTMENT)**  
**I.C.R.R. OVERHEAD**  
**F.A. RT. 33 SEC. 14-VB-VF**  
**CHAMPAIGN COUNTY**  
**STA. 219+00.55**



Note: Details for all R's are similar unless noted



Adjust Length of Conn to fit stiffener spacing



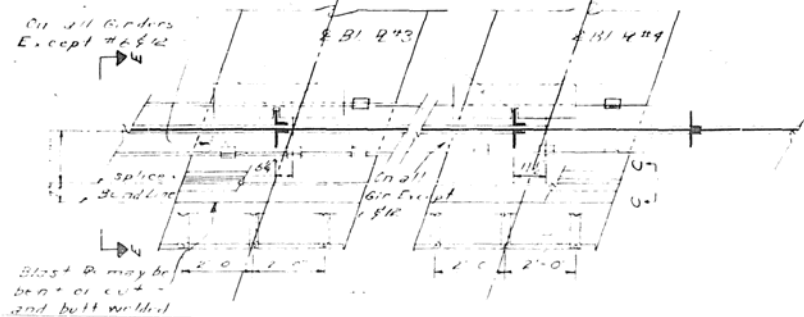
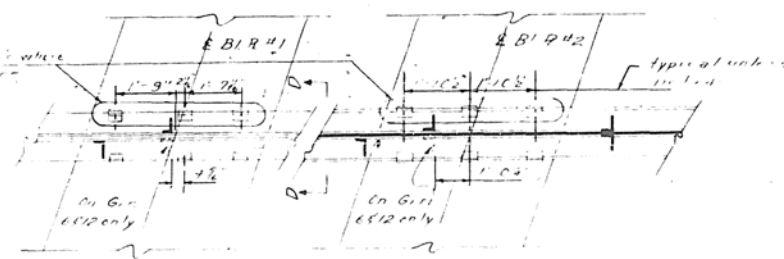
**NOTES**

Blast Plates shall be 1/2" thick and shall conform to ASTM Std. Specification A7 for structural steel except that CR% copper shall be added

All connection plates, angles, bolts & nuts shall be paid for at the unit price bid for structural steel. The wt. of Blast Plates and accessories which are included in the Bill of Material on Sheet #4 as structural steel is 37,040 lbs.

All bolts, washers and nuts shall be galvanized.  
Painting shall be the same as for structural steel.  
Blast Plates shall be level.

Omit Blast Plate Hanger when gusset plates for lower members attached



**BLAST PLATES**

**I.C.R.R. OVERHEAD  
FA RT. 39 SEC. 14-VB-VF  
CHAMPAIGN COUNTY  
STA. 219+00.55**

DESIGNED: *[Signature]*  
CHECKED: *[Signature]*  
DRAWN: BR STULTS  
CHECKED: *[Signature]*

EXAMINED: *[Signature]*  
PASSED: *[Signature]*  
APPROVED: *[Signature]*

Panel	1	2	3	4	5	6	7	8	9	10	11	12
1	24	28	34	4	48	54	58	62	4	32	28	24
2	24	28	34	4	48	54	58	62	4	32	28	24
3	24	28	34	4	48	54	58	62	4	32	28	24
4	24	28	34	4	48	54	58	62	4	32	28	24

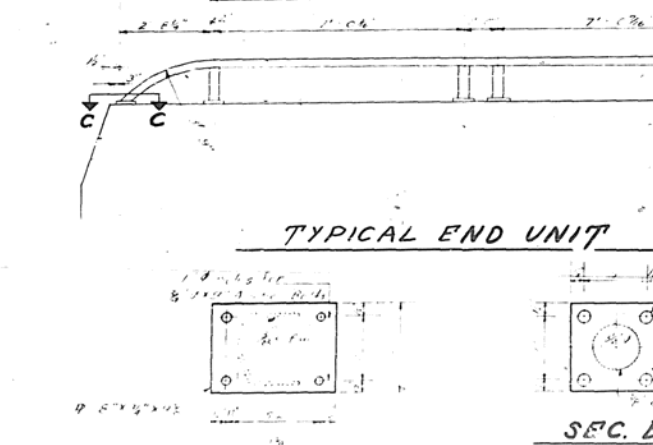
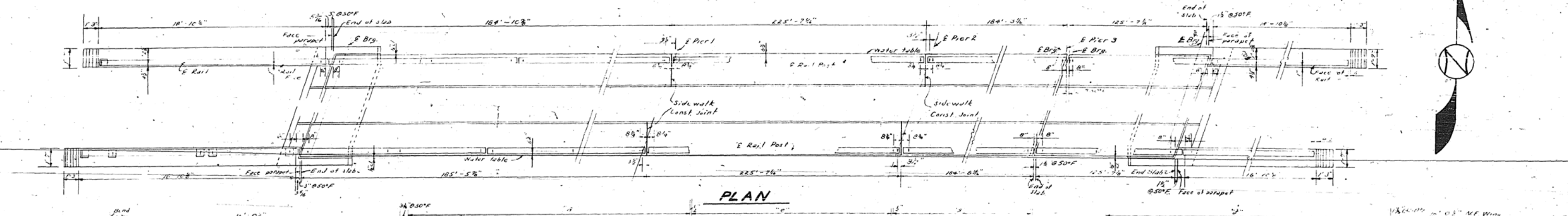
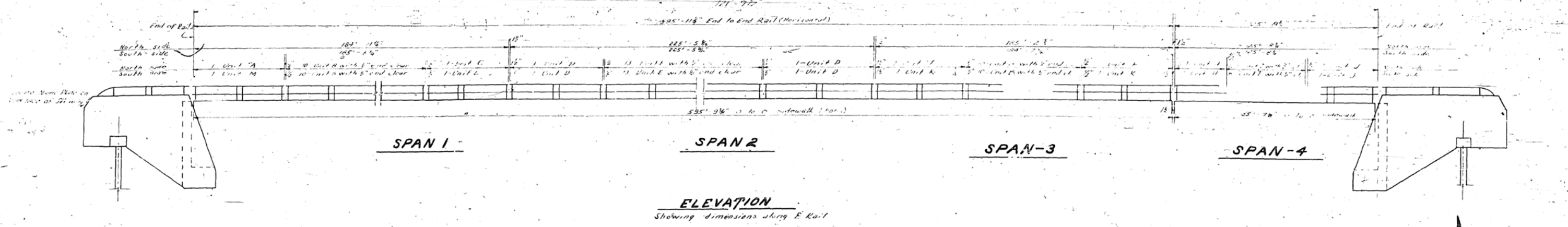
**DIMENSIONS "A"**

Dimensions A are at centerlines of E Hilt R and S Girders



STATE OF ILLINOIS  
DEPARTMENT OF PUBLIC WORKS & BUILDINGS  
DIVISION OF HIGHWAYS

PROJECT NO.	14-VB	CHAMPAIGN	SHEET NO.	20	16
DATE	14-VI		TOTAL SHEETS	16	16



**W. ABUT. UNITS**

Unit	C"	T"	No. Reqd.
A	15'-10 1/2"	6'-3 1/2"	1
M	15'-9 1/2"	6'-3 1/2"	1

**TYPICAL INTERMEDIATE UNITS**

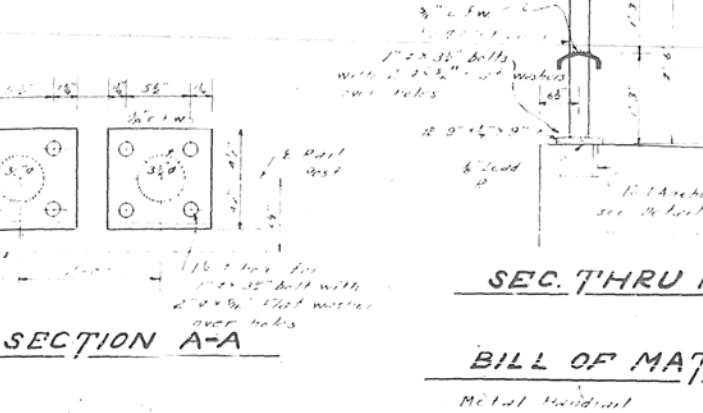
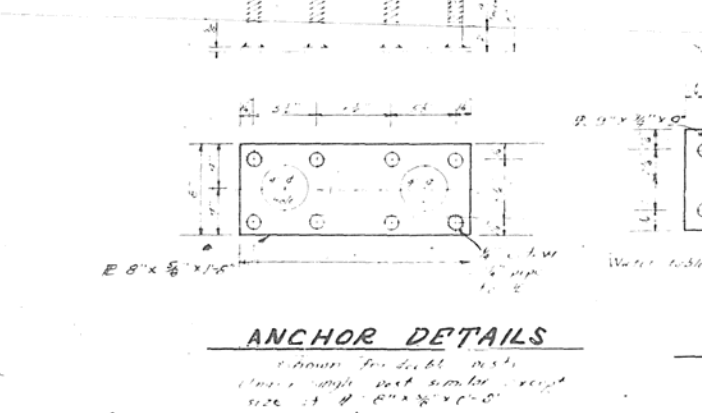
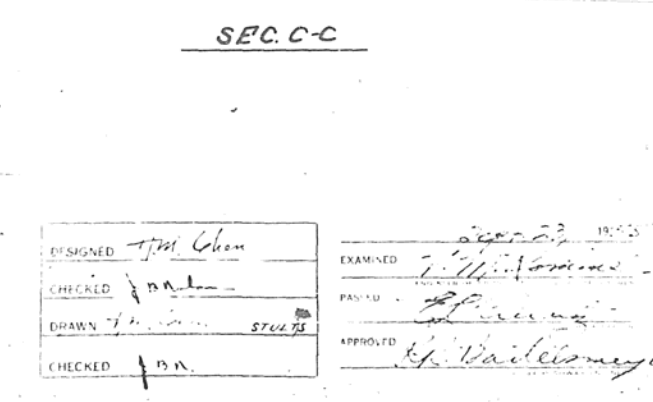
Unit	C"	T"	No. Reqd.
B	15'-3 3/4"	6'-8 1/2"	20
E	14'-11 1/2"	6'-6 1/2"	26
G	15'-1 1/2"	6'-8 1/2"	20
I	15'-7 1/2"	6'-10"	12

**PIER UNITS**

Unit	C"	T"	No. Reqd.
C	15'-6"	6'-8 1/2"	1
D	15'-7 1/2"	6'-8 1/2"	1
F	15'-6 1/4"	6'-7 1/2"	2
H	15'-3 1/2"	6'-10"	2
K	15'-6 1/2"	6'-8 1/2"	2
L	15'-4 1/4"	6'-8 1/2"	1

**E. ABUT. UNITS**

Unit	C"	T"	No. Reqd.
J	15'-10 1/2"	6'-3 1/2"	1



**NOTES**

The contact and end piers for metal handrail shall be constructed in accordance with the following: The metal handrail shall be painted with red lead paint and two field coats of aluminum paint. The handrail anchors shall be painted. Concrete in wing walls is filled with Ab. Cement or London concrete. See sheet #14 for details.

**HANDRAIL**

**SEC. THRU RAIL**

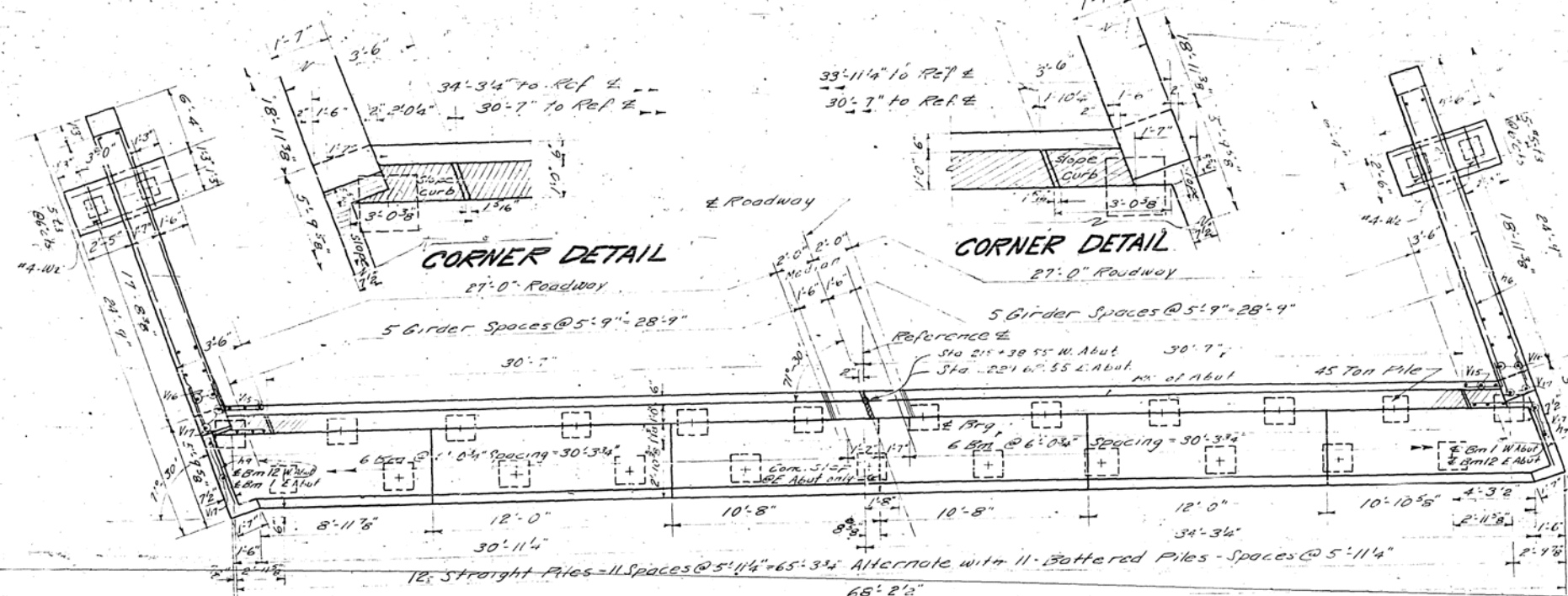
**BILL OF MATERIAL**  
Metal Handrail  
See P. 1516

**RAIL DETAIL**

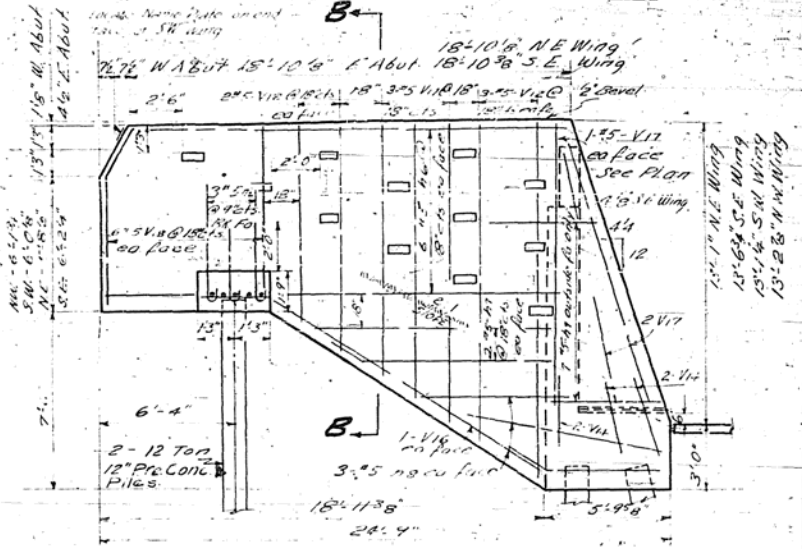
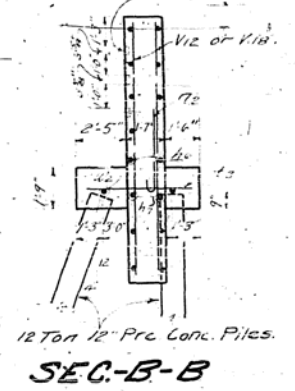
**I.C.R.R. OVERHEAD**  
**F.A. RT. 39 SEC. 14-VB-VF**  
**CHAMPAIGN COUNTY**  
**STA: 219+00.55**

DESIGNED: J.M. Chan  
CHECKED: J.M. Chan  
DRAWN: J.M. Chan  
CHECKED: J.M. Chan

EXAMINED: J.M. Chan  
PAID TO: J.M. Chan  
APPROVED: J.M. Chan

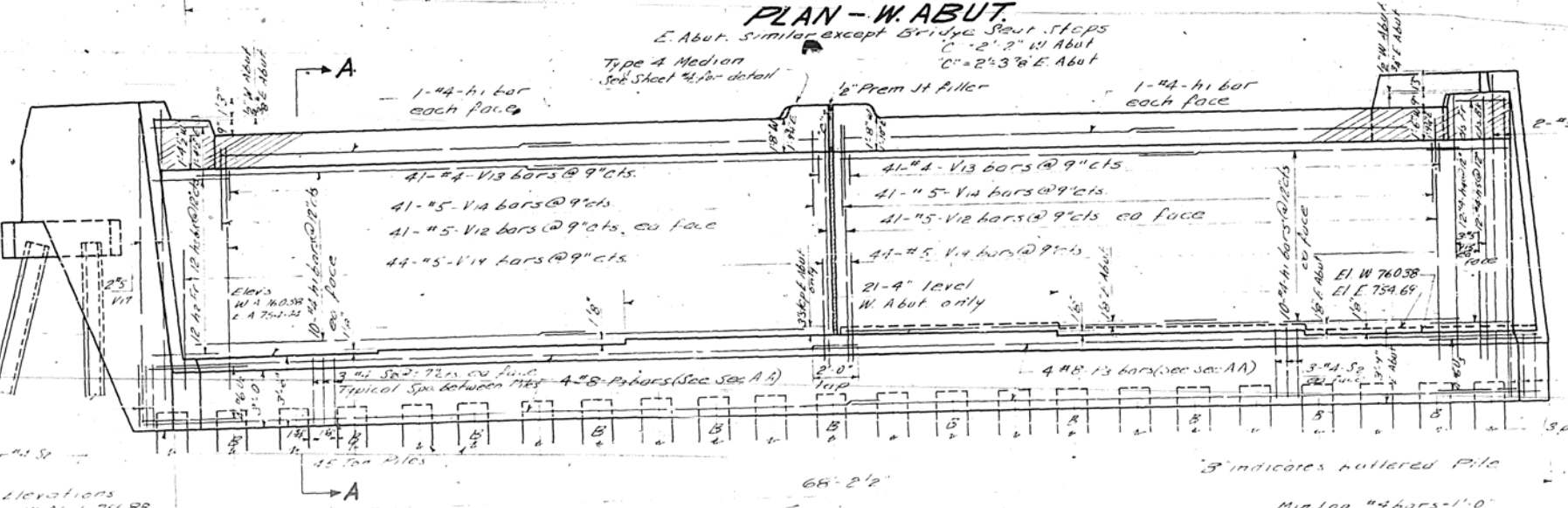


Formed by 2" x 11'-0"  
Battled to all four sides  
Spac. 1'-0" Vert 2'-0" horizontal

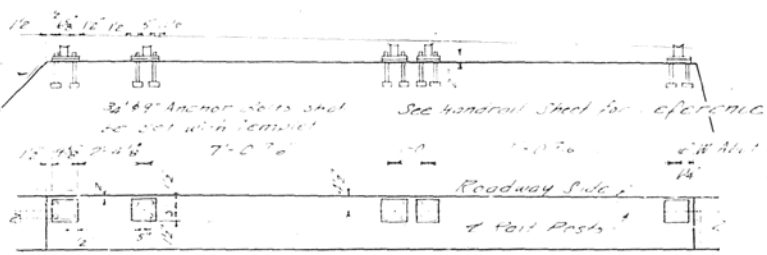


**BILL OF MATERIAL - 2 ABUTS.**

BAR	NO	SIZE	LENGTH	SHAPE
h1	184	#4	17'-6"	
h2	24	#4	6'-0"	
h3	24	#4	4'-0"	
h4	24	#4	7'-0"	
h5	24	#4	4'-0"	
h6	48	#5	19'-0"	
h7	16	#5	13'-0"	
h8	24	#5	7'-3"	
h9	24	#5	6'-0"	
V12	514	#5	9'-0"	
V13	164	#4	4'-3"	
V14	164	#5	5'-9"	
V15	24	#5	11'-3"	
V16	36	#5	16'-0"	
V17	8	#5	12'-3"	
V18	18	#5	8'-0"	
V19	176	#5	6'-3"	
P3	10	#8	35'-4"	
P2	8	#5	3'-4"	
U2	8	#6	14'-4"	
U3	8	#6	13'-7"	
U4	8	#7	2'-3"	
Class X Concrete Cu Yds				178.2
Handrail Concrete Cu Yds				55.1
Reinforcement Bars Lbs				18350
Pre Conc Piles (18") Lin Ft				1980
Test Piles (18" Pre Conc) Lbs				2
Pre Conc Piles (12") Lin Ft				320
Name Plates				10 One

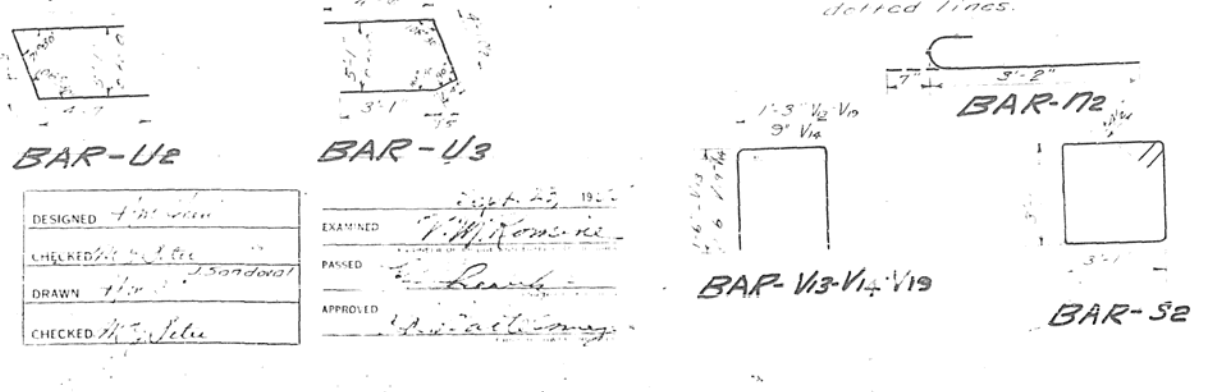


**SEC-A-A**



**PILE DATA**  
46-45 Ton 18" Pre Conc Piles Est Length 45 Ft  
8-12 Ton 12" Pre Conc Piles Est Length 40 Ft

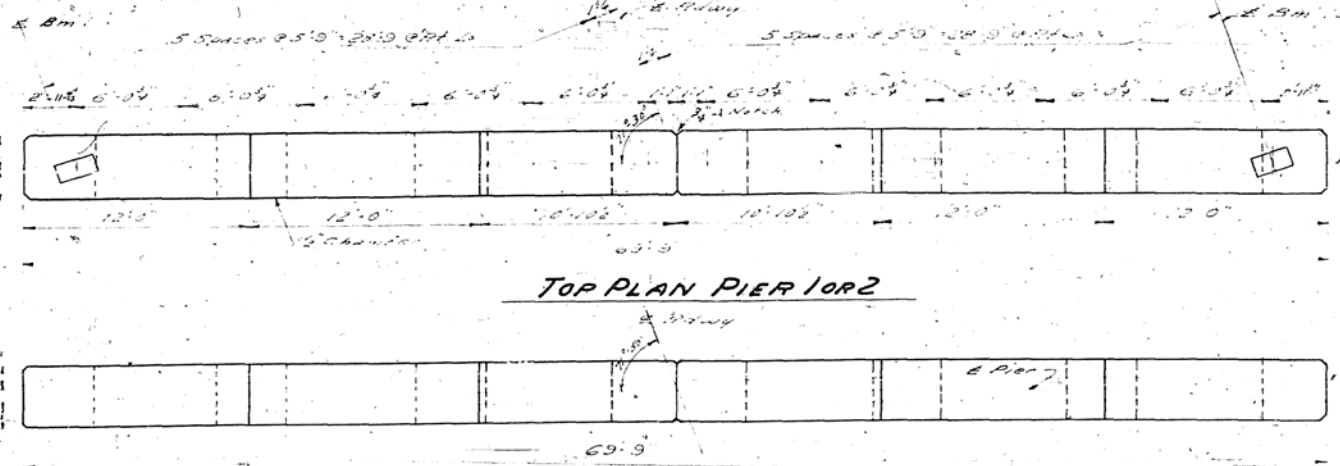
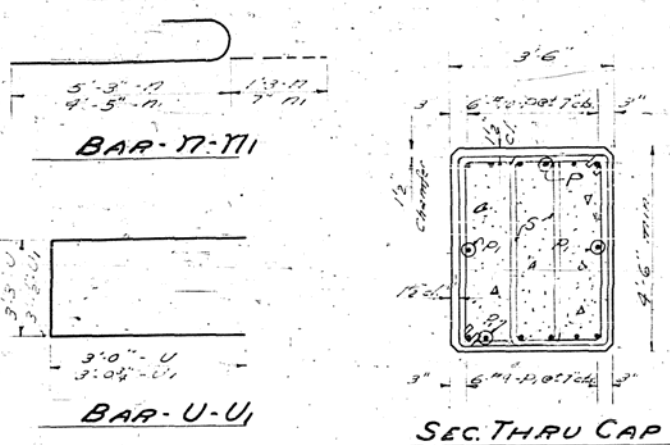
**ABUTMENTS**  
I.C.R.R. OVERHEAD  
F.A. RT. 39 SEC. 14-VB  
CHAMPAIGN CO.  
STA. 219+00.55



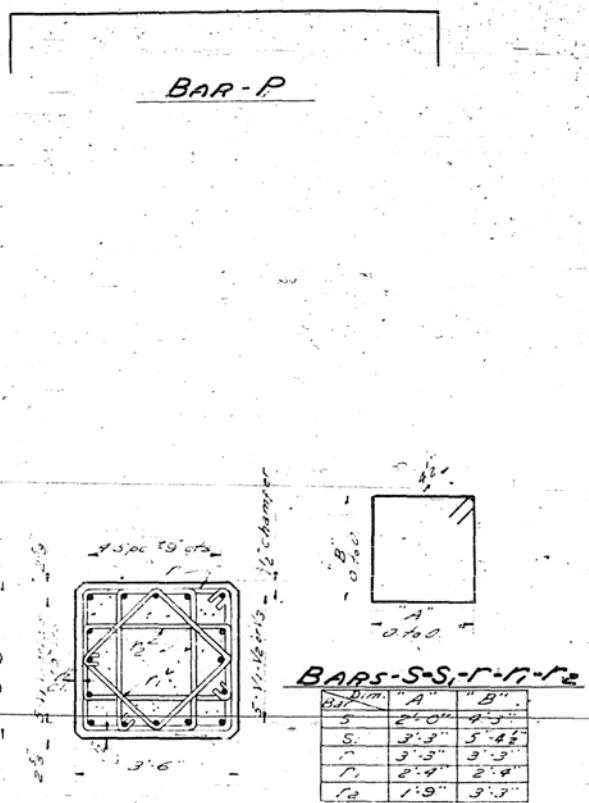
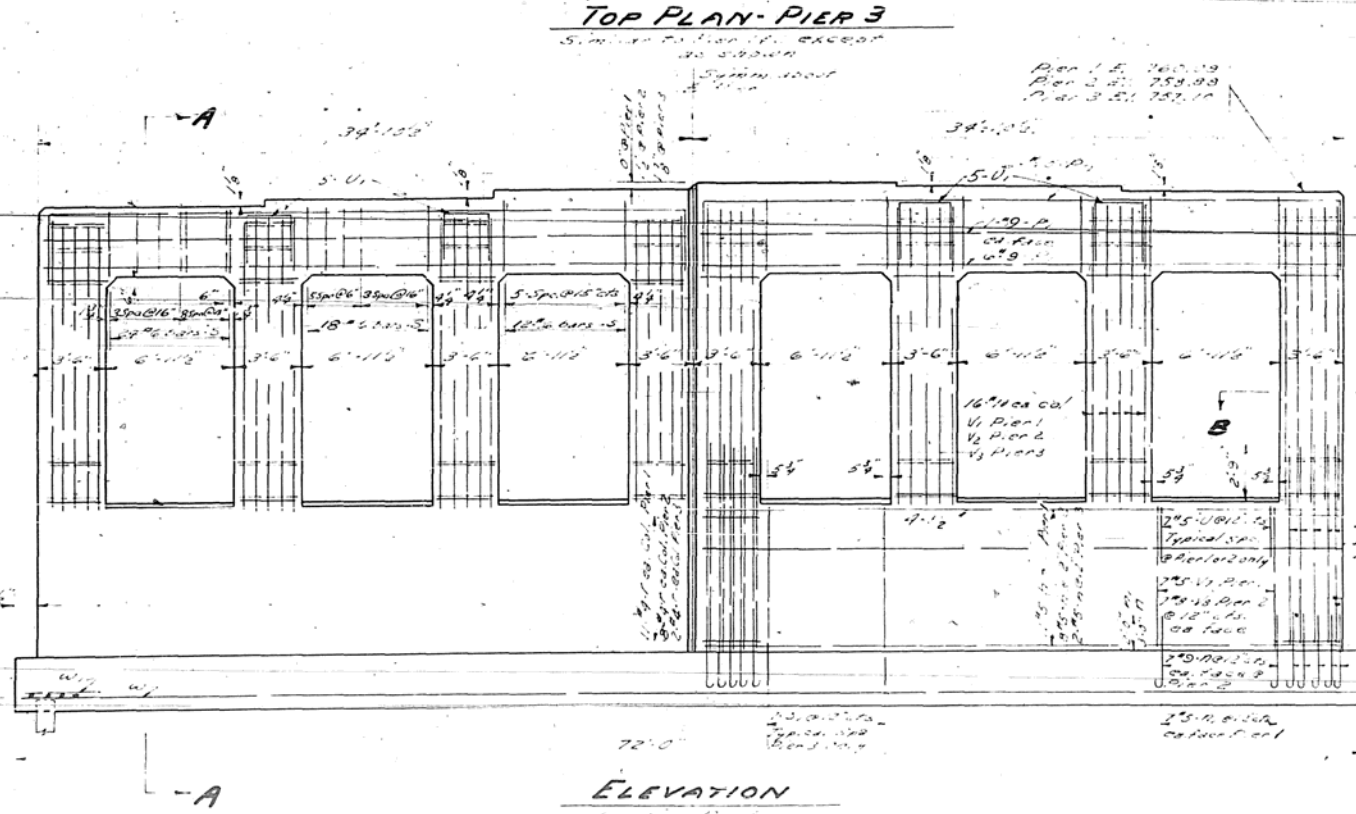
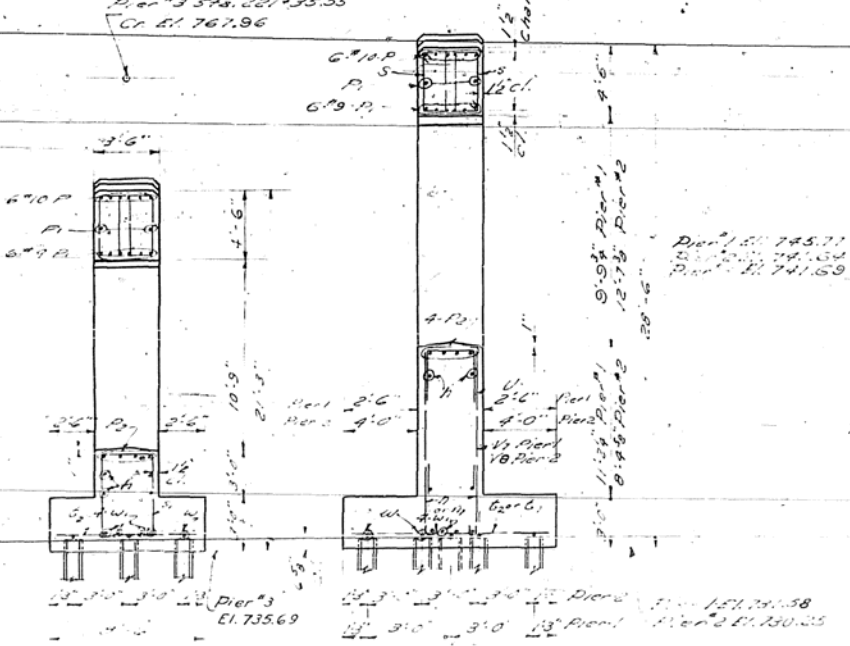
DESIGNED	J. H. Wilson	EXAMINED	J. H. Wilson
CHECKED	J. H. Wilson	PASSED	J. H. Wilson
DRAWN	J. Sandora	APPROVED	J. H. Wilson
CHECKED	J. H. Wilson		

STATE OF ILLINOIS  
DEPARTMENT OF PUBLIC WORKS & BUILDINGS  
DIVISION OF HIGHWAYS

PROJECT NO.	SECTION	COUNTY	SHEETS	SHEET NO.	SHEET TOTAL
14-39	14-VB	CHAMPAIGN	20	18	16 SHEETS



Pier #1 Sta. 217+25.05 C&E 171.74  
Pier #2 Sta. 219+50.55 C&E 177.99  
Pier #1 El. 760.08  
Pier #2 El. 758.75  
Pier #3 El. 756.94



Bar	Dim.	A	B
S	5	2'-0"	4'-0"
S	5	3'-3"	5'-4"
T	7	3'-3"	3'-3"
T	7	2'-4"	2'-4"
T	12	1'-9"	3'-3"

BILL OF MATERIAL - 3 PIERS

Bar	No.	Size	Length	Shape
P	36	#10	43'-0"	T
P	24	#8	39'-6"	T
P	24	#8	39'-6"	T
V	47	#5	34'-6"	T
V	128	#10	14'-0"	T
V	128	#10	12'-9"	T
V	128	#10	15'-0"	T
V	128	#10	14'-0"	T
V	128	#10	11'-3"	T
V	128	#10	5'-9"	T
V	84	#5	1'-0"	T
V	84	#8	4'-0"	T
T	400	#5	3'-0"	T
T	24	#3	3'-0"	T
S	324	#6	12'-0"	T
T	34	#5	13'-0"	T
T	246	#4	13'-9"	T
T	12	#4	10'-1"	T
T	272	#4	10'-9"	T
U	84	#5	5'-3"	T
U	6	#10	9'-3"	T
C	12	#8	1'-3"	T
C	12	#6	8'-3"	T
W	12	#5	25'-0"	T
W	26	#5	36'-0"	T
Class 1 concrete				671.6
Reinforcement bars				100,300
Pre-Cast concrete				470
Total (Pre-Conc)				770

SEC. A-A  
PIER-3

PILE DATA

Description	Pier	Size	Pier	Pier
Min Capacity		40 tons		
Est. Length		20 ft.		
No. Required		2	3	3

DESIGNED: W. J. Kelly  
CHECKED: W. J. Kelly  
DRAWN: W. J. Kelly  
CHECKED: W. J. Kelly

EXAMINED: V. M. Romine  
PASSED: V. M. Romine  
APPROVED: V. M. Romine

Sept. 23, 1922

PIERS 1-2 & 3  
I.C.R.R. OVERHEAD  
F.A.R.R. 39 SEC 14VB  
CHAMPAIGN COUNTY  
STA. 219+00.55

