

ITEM NO. 01A IDOT LETTING: APRIL 24, 2020

CONSTRUCTION PLANS

AIRFIELD PAVEMENT MAINTENANCE INCLUDING CRACK SEALING AND RE-MARKING

TRI-TOWNSHIP AIRPORT (SFY)  
SAVANNA, CARROLL COUNTY, ILLINOIS

IDA PROJECT NO. SFY-4650  
SBGP PROJECT NO. 3-17-SBGP-120/TBD  
JULY 26, 2019



NOTICE TO CONTRACTORS AND BIDDERS

THESE CONSTRUCTION PLANS RELY UPON THE SPECIAL PROVISIONS AND THE SPECIFICATIONS TO PROVIDE FOR A COMPLETE DESCRIPTION OF THE WORK AND CONSTRUCTION REQUIREMENTS. THE PLANS SHALL ONLY BE USED IN COMBINATION WITH ALL CONTRACT DOCUMENTS.

FEB 27, 2020 9:03 AM HAUSM008B2  
I:\19\JOBS\19A00101\19A00101\CAD\AIRPORT\SH-SHEETCOVER SHEET.DWG

No.	Issue/Description	Sheets Changed	Date	By

**HANSON PROFESSIONAL ENGINEERS**  
LINDSAY DENET HAUSMAN  
750 Warrenville Road, Suite 200  
Lisle, Illinois 60532  
Telephone: 630.990.3800  
Fax: 630.990.3801

STATE OF ILLINOIS  
062-059464  
EXP 11/30/21  
February 28, 2020  
Date

Lindsay D. Hausman, P.E.

TRI-TOWNSHIP AIRPORT AUTHORITY  
8049 Illinois Route 84  
Savanna, Illinois 61074

*Dale Brown*  
Dale Brown, Airport Manager  
July 26, 2019  
Date

### INDEX OF SHEETS

Sheet Number	Sheet Title
01	COVER SHEET
02	SHEET INDEX AND SUMMARY OF QUANTITIES
03	SITE PLAN
04	SITE AND SAFETY PLAN NOTES
05	CONSTRUCTION SAFETY NOTES AND DETAILS
06	PHASING PLAN
07	ALIGNMENT DATA TABLE
08	CRACK REPAIR PLAN & DETAILS RUNWAY 13-31 STA. 229+46 - 224+00
09	CRACK REPAIR PLAN RUNWAY 13-31 224+00 - 213+00
10	CRACK REPAIR PLAN RUNWAY 13-31 213+00 - 202+00
11	CRACK REPAIR PLAN RUNWAY 13-31 202+00 - 191+00
12	CRACK REPAIR PLAN RUNWAY 13-31 191+00 - 189+47 & TAXIWAY
13	CRACK REPAIR PLAN APRON & AUTOPARK
14	CRACK REPAIR PLAN TAXILANE 19+44 - 14+35
15	CRACK REPAIR PLAN TAXILANE 14+35 - 10+35
16	MARKING PLAN AND DETAILS RUNWAY 13-31 229+46 - 215+75
17	MARKING PLAN RUNWAY 13-31 215+75 - 189+47
18	MARKING PLAN TAXIWAY & AUTOPARK

### SUMMARY OF QUANTITIES

ITEM NO.	SPECIALTY ITEM	DESCRIPTION	UNIT	QUANTITY
AR150510		ENGINEER'S FIELD OFFICE	LUMP SUM	1.00
AR150520		MOBILIZATION	LUMP SUM	1.00
AR150530		TRAFFIC MAINTENANCE	LUMP SUM	1.00
AR201661	*	CLEAN & SEAL BITUMINOUS CRACKS	LINEAR FOOT	30,594.00
AR201663	*	SAND MIX CRACK REPAIR	LINEAR FOOT	21,930.00
AR620520		PAVEMENT MARKING-WATERBORNE	SQUARE FOOT	23,987.00
AR620525		PAVEMENT MARKING-BLACK BORDER	SQUARE FOOT	7,256.00
AR620900		PAVEMENT MARKING REMOVAL	SQUARE FOOT	3,000.00
AR800986		PAVEMENT SWEEPING	LUMP SUM	1.00

### AIRFIELD PAVEMENT MAINTENANCE INCLUDING CRACK SEALING AND RE-MARKING

SBGP No:  
3-17-SBGP-120/TBD  
IDA No: SFY-4650

Contract No. TR009

NO.	DATE	DESCRIPTION		
		DES	DWN	REV

ISSUE: JUNE 7, 2019

PROJECT NO: 19A0010

CAD FILE: SOQ.DWG

DESIGN BY: LDH 4/8/19

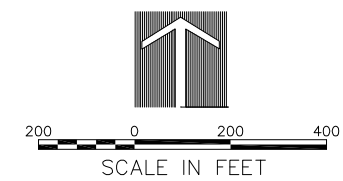
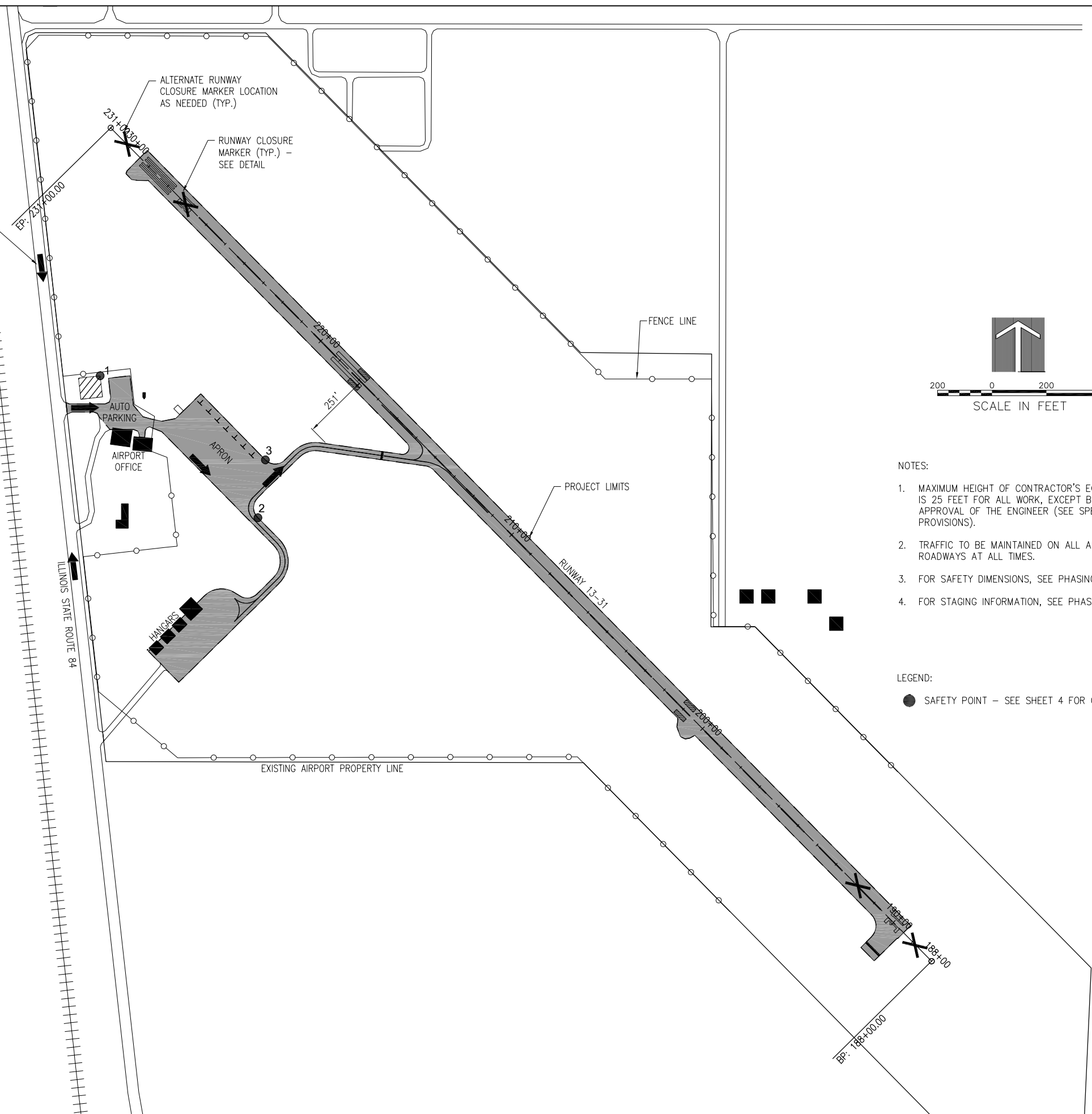
DRAWN BY: LDH 4/8/19

REVIEWED BY: RMH 07/26/19

SHEET TITLE

SHEET INDEX AND SUMMARY OF QUANTITIES

CONTRACTOR SHALL ACCESS SITE FROM PUBLIC ROAD AT EXISTING DRIVEWAY. ROAD SHALL BE SWEEPED/CLEANED THROUGHOUT ALL HAUL/DELIVERY ACTIVITIES. CONTRACTOR SHALL FURNISH CONSTRUCTION SIGNS AND CONDUCT HAUL ACTIVITIES IN ACCORDANCE WITH OWNING AGENCY REQUIREMENTS. COST INCIDENTAL TO CONTRACT.



- NOTES:
1. MAXIMUM HEIGHT OF CONTRACTOR'S EQUIPMENT IS 25 FEET FOR ALL WORK, EXCEPT BY PRIOR APPROVAL OF THE ENGINEER (SEE SPECIAL PROVISIONS).
  2. TRAFFIC TO BE MAINTAINED ON ALL AIRPORT ROADWAYS AT ALL TIMES.
  3. FOR SAFETY DIMENSIONS, SEE PHASING PLANS.
  4. FOR STAGING INFORMATION, SEE PHASING PLAN.

LEGEND:  
● SAFETY POINT - SEE SHEET 4 FOR OBJECT INFORMATION

**AIRFIELD PAVEMENT MAINTENANCE INCLUDING CRACK SEALING AND RE-MARKING**

SBGP No: 3-17-SBGP-120/TBD  
IDA No: SFY-4650

Contract No. TR009


NO.	DATE	DESCRIPTION		
		DES	DWN	REV

ISSUE: JUNE 7, 2019

PROJECT NO: 19A0010

CAD FILE: SITEPLAN.DWG

DESIGN BY: LDH 4/9/19

DRAWN BY: LDH 4/9/19

REVIEWED BY: RMH 07/26/19

SHEET TITLE

SITE PLAN

## GENERAL NOTES

### PROJECT DESCRIPTION

THIS PROJECT IS TO REPAIR PAVEMENT CRACKING AT TRI-TOWNSHIP AIRPORT INCLUDING, AMONG OTHER INCIDENTAL WORK, THE FOLLOWING ITEMS:

- CRACK REPAIR OF EXISTING PAVEMENTS.
- PLACEMENT OF PAVEMENT MARKINGS.

### PROTECTION OF EXISTING AIRPORT FACILITIES

THE CONTRACTOR IS TO BE RESPONSIBLE FOR THE PROTECTION OF EXISTING UNDERGROUND AND OVERHEAD UTILITIES AND LIGHTING EQUIPMENT; DRIVEWAY AND ROAD PAVEMENT AND SHOULDERS; RUNWAY, TAXIWAY AND APRON PAVEMENTS AND SHOULDERS; RUNWAY, TAXIWAY AND AIRPORT LIGHTING EQUIPMENT; AND SEEDED AND TURFED AREAS THAT ARE UTILIZED IN OR AFFECTED BY THE CONTRACTOR'S ACTIVITIES. ITEMS DAMAGED BY THE CONTRACTOR ARE TO BE REPAIRED AT CONTRACTOR'S EXPENSE AND TO THE SATISFACTION OF THE AIRPORT MANAGER AND THE OWNER'S REPRESENTATIVE.

IN ADDITION, WHEN CONDITIONS DICTATE OR AS DETERMINED BY THE AIRPORT MANAGER OR THE OWNER'S REPRESENTATIVE, THE CONTRACTOR SHALL BE REQUIRED TO USE A PICK-UP TYPE SWEEPER IN ALL ACTIVE CONSTRUCTION AIRFIELD PAVEMENT AREAS. THE CONTRACTOR WILL BE REQUIRED TO HAVE A SWEEPER AS PRESCRIBED BY THE SPECIAL PROVISIONS. THE COST OF SWEEPING SHALL BE PAID UNDER AR800986.

### CONTRACTOR'S ACCESS AND TEMPORARY FACILITIES

CONTRACTOR'S ACCESS TO THE PROJECT WHEN ON AIRPORT PROPERTY IS SHOWN ON SHEET 3. CONTRACTOR'S ACCESS TO THE AIRPORT ITSELF IS TO BE PROVIDED BY PUBLIC RIGHTS-OF-WAY. THE CONTRACTOR IS TO SECURE ALL NECESSARY PERMITS FOR THE USE OF ANY PUBLIC RIGHTS-OF-WAY AND IS TO MAINTAIN TRAFFIC ON THESE PUBLIC ROADS AT ALL TIMES, WITH THE COSTS OF PERMITTING, CLEANING AND REPAIRING OF PAVEMENT DAMAGED BY CONTRACTOR'S ACTIVITIES INCIDENTAL TO THE CONTRACT. USE OF AND REPAIRS TO ANY PUBLIC FACILITIES ARE TO BE COMPLETED TO THE SATISFACTION OF THE FACILITY'S OWNER.

THE CONTRACTOR IS TO PROVIDE TEMPORARY CONSTRUCTION ROADS WITHIN THE CONSTRUCTION LIMIT LINES AS MAY BE REQUIRED BY HIS ACTIVITIES. HEAVY VEHICLES SHALL NOT CROSS EXISTING PAVEMENT SURFACES EXCEPT AS APPROVED BY THE AIRPORT MANAGER AND THE OWNER'S REPRESENTATIVE. ANY DAMAGE TO PAVEMENTS THAT MAY OCCUR BY THE CONTRACTOR'S ACTIVITIES SHALL BE REPAIRED AT THE CONTRACTOR'S EXPENSE AND TO THE SATISFACTION OF THE AIRPORT MANAGER AND THE OWNER'S REPRESENTATIVE. FOR HAUL ROUTES MADE BY THE CONTRACTOR THROUGH GRASSED AREAS, CONTRACTOR SHALL GRADE, LEVEL, TOPSOIL, SEED AND MULCH AT THE END OF THE PROJECT, COST INCIDENTAL TO THE CONTRACT.

THE CONTRACTOR IS TO PROVIDE AN EQUIPMENT STORAGE AND PARKING AREA AT THE LOCATIONS SHOWN ON SHEET 3. IT IS THE CONTRACTOR'S RESPONSIBILITY TO MAINTAIN THE ACCESS ROADS AND THE STORAGE AREA DURING CONSTRUCTION AND TO RESTORE THE AREAS AT PROJECT COMPLETION TO CONDITIONS SUITABLE TO THE AIRPORT MANAGER AND THE OWNER'S REPRESENTATIVE. AT THE AIRPORT MANAGER'S DISCRETION, THE TEMPORARY FACILITIES MAY REMAIN, BUT THEY MUST BE LEFT IN CONDITIONS SUITABLE TO THE AIRPORT MANAGER. THE COST OF PROVIDING, MAINTAINING AND RESTORING THE TEMPORARY FACILITIES IS INCIDENTAL TO THE CONTRACT.

### RESPONSIBILITY FOR EXISTING UTILITIES

THE LOCATION, SIZE AND/OR TYPE OF MATERIAL OF EXISTING UNDERGROUND OR OVERHEAD UTILITIES AS MAY BE INDICATED ON THESE CONSTRUCTION PLANS IS NOT REPRESENTED AS BEING ACCURATE, SUFFICIENT OR COMPLETE. NEITHER THE OWNER NOR THE PROJECT ENGINEER HAVE INDEPENDENTLY VERIFIED THIS INFORMATION AND NEITHER ASSUMES ANY RESPONSIBILITY WHATSOEVER IN RESPECT TO THE ACCURACY, SUFFICIENCY OR COMPLETENESS OF THE INFORMATION AND GIVE NO EXPRESSED OR IMPLIED GUARANTEE THAT ANY CONDITIONS INDICATED ARE REPRESENTATIVE OF ACTUAL CONDITIONS TO BE ENCOUNTERED.

IT SHALL BE THE CONTRACTOR'S RESPONSIBILITY TO DETERMINE THE ACTUAL LOCATION OF ALL SUCH FACILITIES, INCLUDING SERVICE CONNECTIONS TO UNDERGROUND UTILITIES. PRIOR TO CONSTRUCTION, THE CONTRACTOR SHALL NOTIFY ALL UTILITY COMPANIES AND AGENCIES OF HIS CONSTRUCTION PLANS AND SHALL OBTAIN FROM EACH PARTY DETAILED INFORMATION AND ASSISTANCE RELATIVE TO THE LOCATION OF ALL UTILITIES AND THE WORKING SCHEDULE OF ANY REMOVALS OR ADJUSTMENTS REQUIRED OF THE UTILITY. THE CONTRACTOR SHALL CONTACT J.U.L.I.E. (PHONE 800-892-0123) TO ASSIST IN THE ABOVE.

THE CONTRACTOR SHALL PROTECT ANY FACILITIES TO THE SATISFACTION OF THE UTILITY OR OWNING-AGENCY WITH THE COST OF ANY REQUIRED PROTECTION TO BE INCIDENTAL TO THE CONTRACT. IN THE EVENT A UTILITY LINE OR SERVICE IS UNEXPECTEDLY ENCOUNTERED DURING CONSTRUCTION, THE CONTRACTOR SHALL IMMEDIATELY NOTIFY THE OWNER'S REPRESENTATIVE AND THE UTILITY COMPANY OR AGENCY OF JURISDICTION. ANY SUCH UTILITIES DISTURBED BY THE CONTRACTOR'S OPERATIONS SHALL BE RESTORED TO SERVICE AT ONCE.



PROJECT IS LOCATED IN  
NORTHWEST 1/4 OF  
SECTION 25, SAVANNA  
TOWNSHIP, CARROLL  
COUNTY

### NOTES

1. VERTICAL COORDINATES ARE IN NGVD 29. HORIZONTAL COORDINATES ARE IN STATE PLANE NAD 83 ILLINOIS WEST.
2. STATIONS, OFFSETS AND ELEVATIONS SHOWN ARE IN FEET.
3. THE AIRPORT REFERENCE CODE FOR RUNWAY 13-31 IS B-II. RUNWAY 13 HAS A NON-PRECISION APPROACH WITH VISIBILITY MINIMUM OF GREATER THAN 3/4 MILE WHILE RUNWAY 31 HAS A VISUAL APPROACH.

EXISTING BENCHMARKS			
DESCRIPTION	NORTHING	EASTING	ELEV.
DP3578	1,956,776.581	2,311,134.027	608.30
NJ0182	1,959,331.356	2,311,144.378	610.68
NJ0181	1,960,063.280	2,310,910.888	608.83
NJ0180	1,960,952.407	2,310,917.129	610.52

EXISTING RUNWAY END COORDINATES			
DESCRIPTION	LATITUDE	LONGITUDE	ELEV.
RUNWAY END 13	42° 02' 59.1089"	90° 06' 47.1818"	611.8
RUNWAY END 31	42° 02' 30.9340"	90° 06' 10.0062"	612.6

OBJECT INFORMATION									
ITEM NO.	DESCRIPTION	MOBILITY	GROUND ELEVATION	OBJECT ELEVATION	LATITUDE	LONGITUDE	RUNWAY 13-31 STATION	RUNWAY 13-31 OFFSET	RUNWAY 13-31 EXIST EL.
1	CONTRACTOR'S CONSTRUCTION STORAGE	STATIONARY	596.5	621.5	42° 02' 51.1719" N	90° 06' 49.1262" W	224+77.84	667.5	614.0
2	CONSTRUCTION EQUIPMENT - 2A	MOVING	613.1	638.1	42° 02' 46.0116" N	90° 06' 41.4440" W	216+99.03	620.6	615.7
3	CONSTRUCTION EQUIPMENT - 2B	MOVING	611.4	636.4	42° 02' 48.1119" N	90° 06' 41.0772" W	218+31.19	451.8	615.9

## AIRFIELD PAVEMENT MAINTENANCE INCLUDING CRACK SEALING AND RE-MARKING

SBGP No:  
3-17-SBGP-120/TBD  
IDA No: SFY-4650

Contract No. TR009

NO.	DATE	DESCRIPTION		
		DES	DWN	REV

ISSUE: JUNE 7, 2019  
PROJECT NO: 19A0010  
CAD FILE: GENNOTES.DWG  
DESIGN BY: LDH 4/9/19  
DRAWN BY: LDH 4/9/19  
REVIEWED BY: RMH 07/26/19

SHEET TITLE

## SITE AND SAFETY PLAN NOTES

**CONSTRUCTION AND SAFETY NOTES**

**SAFETY IS REQUIRED**

CONSTRUCTION OF THE PROJECT SHALL BE PERFORMED BY THE CONTRACTOR IN ACCORDANCE WITH THE GUIDELINES SPECIFIED IN FAA ADVISORY CIRCULAR 150/5370-2 (CURRENT ISSUE) AND THE AIRPORT RULES AND REGULATIONS. BEFORE ANY NOTICE TO PROCEED WILL BE ISSUED, THE CONTRACTOR IS REQUIRED TO SUBMIT A SAFETY PLAN COMPLIANCE DOCUMENT (SPCD) TO THE AIRPORT OPERATOR FOR APPROVAL. ANY CONTRACTOR ACTIVITIES REQUIRED FOR PROJECT SAFETY SHALL BE PROVIDED BY THE CONTRACTOR AND BE INCIDENTAL TO THE CONTRACT.

**SEQUENCE OF CONSTRUCTION**

TO MINIMIZE DISRUPTIONS OF AIRPORT OPERATIONS, CONSTRUCTION OPERATIONS MUST BE CONTROLLED THROUGHOUT THE PROJECT'S DURATION, AND WORK MUST BE COMPLETED EXPEDITIOUSLY. A CONSTRUCTION PHASING PLAN DETAILING THE SEQUENCING OF THE CONTRACTOR'S WORK THROUGHOUT THE PROJECT IS INCLUDED IN THE PLANS. THE CONTRACTOR SHALL PROVIDE HIS WRITTEN ACCEPTANCE OF THE PROJECT CONSTRUCTION PHASING PLAN AT THE PRE-CONSTRUCTION CONFERENCE. ANY AND ALL CHANGES TO THE CONSTRUCTION PHASING PLAN THAT MAY BE REQUESTED BY THE CONTRACTOR MUST BE APPROVED BY THE PROJECT ENGINEER AND THE AIRPORT OWNER. IT SHALL BE THE CONTRACTOR'S RESPONSIBILITY TO PROVIDE SUFFICIENT ADVANCE NOTICE OF ANY PROPOSED PHASING CHANGE TO PERMIT CONSIDERATION AND APPROVAL BY THE PROJECT ENGINEER AND THE AIRPORT OWNER. THE CONTRACTOR SHALL NOT BE ENTITLED TO ANY EXTRA COMPENSATION, NOR EXTENSION TO THE CONTRACT TIME, BECAUSE OF A PHASING CHANGE REQUEST NOR FOR ANY TIME NECESSARY IN RECEIVING THE REQUIRED APPROVALS. THE CONTRACTOR SHALL EXPEDITE WORK AT THOSE STAGES WHERE ACTIVE TAXIWAYS, HANGAR ACCESS, APRONS, ROADWAYS OR PARKING LOTS MUST BE CLOSED, TO MINIMIZE THE LENGTH OF TIME THAT AIRPORT OPERATIONS ARE RESTRICTED.

AT THE PRE-CONSTRUCTION CONFERENCE, THE CONTRACTOR SHALL PROVIDE A CONTRACTOR COORDINATION PLAN THAT COORDINATES HIS WORK WITH THE WORK OF HIS SUBCONTRACTORS AND THE WORK OF OTHER CONTRACTORS OF OTHER ON-GOING AIRPORT PROJECTS.

**RUNWAY CLOSURE**

THIS PROJECT WILL REQUIRE THE TEMPORARY CLOSURE OF RUNWAY 13-31, SEE PHASING PLANS ON SHEET 6 AND DETAIL C ON THIS SHEET. TO MINIMIZE DISRUPTION TO AIRCRAFT OPERATIONS ASSOCIATED WITH THE RUNWAY CLOSURE, CONSTRUCTION WORK MUST BE COMPLETED EXPEDITIOUSLY. RUNWAY CLOSINGS SHALL ONLY BE PERMITTED BY PRIOR AUTHORIZATION OF THE RESIDENT ENGINEER AND THE AIRPORT OWNER.

THE CONTRACTOR WILL PROVIDE, INSTALL, MAINTAIN AND REMOVE RUNWAY CLOSURE MARKERS AS DETAILED ON THIS SHEET AND IN THE SPECIAL PROVISIONS. IT WILL BE THE CONTRACTOR'S RESPONSIBILITY TO INSTALL, RELOCATE AND MAINTAIN RUNWAY CLOSURE MARKERS AT THE LOCATIONS SHOWN IN THE PLAN, AND AS DIRECTED BY THE RESIDENT ENGINEER AND AIRPORT OWNER. THE COST OF PLACING AND RELOCATING THESE ITEMS, AND THEIR OPERATION AND MAINTENANCE, IS TO BE PAID UNDER ITEM AR150530 TRAFFIC MAINTENANCE. OWNERSHIP OF MARKERS SHALL REMAIN WITH THE CONTRACTOR AFTER FINAL ACCEPTANCE OF THE WORK.

THE AIRPORT OWNER WILL DE-ENERGIZE AIRPORT/RUNWAY NAVAIDS, AND AIRFIELD LIGHTING POWER AND CONTROL CIRCUITS WHEN THE RUNWAY IS CLOSED.

**TEMPORARY BARRICADES**

THE CONTRACTOR SHALL FURNISH BARRICADES FOR ANY AIRFIELD OR ROADWAY PAVEMENT TO BE CLOSED BY HIS WORK. IT WILL BE THE CONTRACTOR'S RESPONSIBILITY TO FURNISH, PLACE AND MAINTAIN BARRICADES AS SHOWN IN DETAIL B, THIS SHEET, AND AS DIRECTED BY THE RESIDENT ENGINEER AND AIRPORT DIRECTOR. THE COST OF THESE ITEMS, AND THEIR MAINTENANCE, IS TO BE PAID FOR UNDER AR150530 TRAFFIC MAINTENANCE. ANY WORK THAT REQUIRES PORTIONS OF AN ACTIVE RUNWAY, TAXIWAY OR APRON TO BE CLOSED MUST BE COMPLETED EXPEDITIOUSLY TO MINIMIZE DISRUPTION TO AIRCRAFT OPERATIONS.

**VEHICULAR TRAFFIC CONTROL**

THE CONTRACTOR SHALL ERECT AND MAINTAIN, AT NO COST TO THE CONTRACT, DIRECTIONAL AND INFORMATIONAL SIGNS FOR THE CONTRACTOR'S ACCESS ROUTES AT THE EXISTING CONSTRUCTION ENTRANCES AND FOR THE CONTRACTOR'S ROUTE WITHIN THE AIRPORT OPERATIONS AREA, AS NOTED ON THE PLANS OR AS DIRECTED BY THE RESIDENT ENGINEER. WHERE CONTRACTOR EQUIPMENT IS OPERATING WITHIN ACTIVE AIRCRAFT OPERATIONS AREAS, RADIO-EQUIPPED FLAGGERS SHALL BE FURNISHED BY THE CONTRACTOR. THE COST OF TRAFFIC CONTROL/FLAGGERS SHALL BE PAID UNDER ITEM AR150530 TRAFFIC MAINTENANCE. ADDITIONALLY, CONTINUOUS PAVEMENT SWEEPING SHALL BE FURNISHED TO REMOVE DEBRIS FROM ACTIVE AIRCRAFT MOVEMENT PATHS. PAVEMENT SWEEPING SHALL BE AS PRESCRIBED IN THE SPECIAL PROVISIONS PAID UNDER AR800986 PAVEMENT SWEEPING.

**AIRFIELD OPERATIONAL SAFETY DURING CONSTRUCTION**

THE CONTRACTOR SHALL NOT HAVE ACCESS TO ANY PART OF THE ACTIVE AIRFIELD (RUNWAYS, TAXIWAYS OR APRONS) FOR ANY EQUIPMENT OR PERSONNEL WITHOUT THE APPROVAL OF THE RESIDENT ENGINEER AND THE AIRPORT OWNER. ACTIVITIES WITHIN THE AIRPORT OPERATIONS AREA (AOA) ARE SUBJECT TO FEDERAL ACCESS CONTROL. BECAUSE OF THE HIGH REQUIREMENTS FOR AIRPORT SECURITY AND SAFETY, THE FOLLOWING REQUIREMENTS MUST BE ADHERED TO:

- ALL EMPLOYEES OF THE CONTRACTOR SHALL PARK THEIR PERSONAL VEHICLES IN THE DESIGNATED EQUIPMENT PARKING AND STORAGE AREA. EACH PERSON OR VEHICLE ENTERING THE CONTRACTOR AREA SHALL DO SO IN ACCORDANCE WITH THE POLICIES AND PROCEDURES OF THE AIRPORT OWNER. THE CONTRACTOR WILL TRANSPORT THE WORKERS FROM THE PARKING AREAS TO THE WORK AREA. ONLY CONTRACTOR VEHICLES WILL BE ALLOWED OUTSIDE OF THE PROPOSED EQUIPMENT STORAGE AND PARKING AREAS.
- SHOULD ANY CONTRACTOR PERSONNEL BE IDENTIFIED AS NONCOMPLIANT WITH ANY VEHICLE DRIVING SAFETY REQUIREMENTS IN THIS PROJECT SAFETY PLAN OR IN THE AIRPORT VEHICLE OPERATIONS REGULATIONS, SUCH DRIVERS SHALL BE PENALIZED BY RESCISSION OF THEIR ON-AIRPORT DRIVING PRIVILEGES, AND THEIR ACCESS TO THE CONSTRUCTION LIMIT AREA WHEN OPERATING VEHICLES SHALL BE REVOKED.
- THE CONTRACTOR WILL BE REQUIRED TO BE IN CONTACT WITH AIRPORT OPERATIONS. THIS WILL KEEP THE CONTRACTOR IN CONTACT WITH AIRPORT PERSONNEL AND ENABLE THE AIRPORT PERSONNEL TO IMMEDIATELY CONTACT THE CONTRACTOR IN CASE OF AN AERONAUTICAL EMERGENCY THAT WOULD REQUIRE ACTION BY THE CONTRACTOR AND/OR HIS PERSONNEL.

THE CONTRACTOR SHALL REMAIN WITHIN THE CONSTRUCTION LIMITS LINE SHOWN IN THE PLANS. WHEN OUTSIDE THESE LIMITS, ALL CONTRACTOR ACTIVITIES SHALL REMAIN MORE THAN 250 FEET FROM THE CENTERLINE AND 300 FEET FROM THE END OF ACTIVE RUNWAY 13-31. FOR WORK NEAR TAXIWAYS AND APRONS, THE CONTRACTOR'S PERSONNEL AND EQUIPMENT MUST REMAIN AT LEAST 44.5 FEET FROM CENTERLINE OF ACTIVE CATEGORY I TAXIWAYS, 65.5 FEET FROM ACTIVE CATEGORY II TAXIWAYS, AND TEN (10) FEET FROM ACTIVE APRONS. WHEN CONSTRUCTION OPERATIONS MUST BE CONDUCTED WITHIN THESE SEPARATIONS, THE PAVEMENT MUST BE CLOSED TO AIRCRAFT ACTIVITY BY THE CONTRACTOR BY PROVIDING TEMPORARY BARRICADES AS SHOWN IN THE PLANS, AND IN THE CASE OF RUNWAY PAVEMENTS, CLOSED RUNWAY MARKERS. WHEN HAUL VEHICLES ARE PERMITTED TO CROSS ACTIVE AIRFIELD PAVEMENTS, THE CONTRACTOR WILL PROVIDE POSITIVE CONTROL OF CONSTRUCTION VEHICLES USING RADIO-EQUIPPED FLAGGERS. CONTRACTOR SHALL ESTABLISH AND MAINTAIN RADIO CONTACT WITH TRI-TOWNSHIP AIRPORT CTAU/UNICOM (122.7 MHz). ALL CONTRACTOR'S EQUIPMENT USED IN ACTIVE AIRPORT OPERATIONS AREAS SHALL BE EQUIPPED WITH A FAA-STANDARD FLAG, AS REFERENCED IN FAA AC 150/5370-2, CURRENT ISSUE. AIRCRAFT SHALL HAVE THE RIGHT-OF-WAY. ALL TAXIWAY WITHIN THE PROJECT LIMITS ARE CATEGORY I.

NO CLOSURE OF ANY RUNWAY WILL BE PERMITTED FOR THIS PROJECT, EXCEPT AS SHOWN IN THE PHASING PLANS.

THE CONTRACTOR SHALL KEEP ALL OF HIS EQUIPMENT AND PERSONNEL AT LEAST 15 FEET FROM THE EDGE OF ANY ACTIVE ROADWAY OR AUTO PARKING PAVEMENT. WHEN HIS ACTIVITIES REQUIRE WORKING WITHIN 15 FEET OF THE ROAD/PAVEMENT EDGE, THE CONTRACTOR SHALL PROVIDE FOR TRAFFIC CONTROL IN ACCORDANCE WITH IDOT SPECIFICATIONS (HIGHWAY STANDARDS).

OPEN TRENCHES, EXCAVATIONS AND STOCKPILED MATERIAL AT THE CONSTRUCTION SITE SHALL BE DELINEATED WITH THE USE OF BARRICADES DURING HOURS OF RESTRICTED VISIBILITY AND/OR DARKNESS. NO OPEN TRENCHES SHALL BE ALLOWED WITHIN THE RUNWAY SAFETY AREA (RSA) OR THE TAXIWAY SAFETY AREA (TSA) WHEN THE RUNWAY OR TAXIWAY IS OPEN TO AIR TRAFFIC (INCLUDING OVERNIGHT). THE RSA IS DEFINED AS 75 FEET FROM THE CENTERLINE AND 300 FEET FROM THE END OF RUNWAY 13-31. THE TSA IS MEASURED AT 24.5 FEET FROM THE CATEGORY I TAXIWAY CENTERLINE AND 39.5 FEET FROM THE CATEGORY II TAXIWAY CENTERLINE. NO VERTICAL DROP OF GREATER THAN 3-INCHES IN HEIGHT FROM PAVEMENT EDGE TO EARTH GRADE OR EARTH GRADE TO EARTH GRADE WITHIN THE RSA OR TSA WILL BE PERMITTED WHEN THE RUNWAY OR TAXIWAY IS OPEN TO AIR TRAFFIC. THE CONTRACTOR WILL HAVE STEEL PLATES ON-SITE TO ALLOW FOR THE RAPID COVERING OF TRENCHES OR EARTH DROPS IN THE EVENT OF UNEXPECTED WORK STOPPAGES FOR WEATHER OR AIRPORT EMERGENCIES. ALL TAXIWAYS WITHIN THE PROJECT LIMITS ARE CATEGORY I.

WHEN NOT IN USE AND DURING NONWORKING HOURS, CONTRACTOR'S EQUIPMENT SHALL BE PARKED WITHIN THE CONTRACTOR'S EQUIPMENT STORAGE AND PARKING AREAS. THE EQUIPMENT STORAGE AND PARKING AREAS ARE TO BE LOCATED AS SHOWN ON THE PHASING PLAN. THE CONTRACTOR WILL BE RESPONSIBLE FOR MAINTAINING THE CONSTRUCTION ENTRANCES IN GOOD CONDITION. THE COST OF MAINTAINING THE CONSTRUCTION ENTRANCE AND CONTRACTOR AREAS IS TO BE INCIDENTAL TO THE CONTRACT. THE CONTRACTOR SHALL PROTECT ALL EXISTING PAVEMENT EDGES FROM DAMAGE FROM CONSTRUCTION EQUIPMENT AND HAUL VEHICLES.

AT NO TIME SHALL THE CONTRACTOR CONDUCT ANY ACTIVITIES OR OPERATE OR PARK EQUIPMENT SO AS TO OBSTRUCT ACTIVE PART 77 AIRPORT IMAGINARY SURFACES OR THE RUNWAY PROTECTION ZONES (RPZ) AS DELINEATED IN THE PLANS. CONTRACTOR'S EQUIPMENT SHALL EXTEND NO HIGHER THAN 25 FEET. CRANES SHALL NOT BE USED DURING INSTRUMENT WEATHER CONDITIONS OR AT NIGHT. CRANES SHALL BE LOWERED WHEN NOT IN USE.

BEFORE REOPENING TEMPORARILY CLOSED PAVEMENTS, THE CONTRACTOR SHALL INSPECT AND CLEAN, AS NECESSARY, THE PAVEMENT TO ASSURE THAT NO MATERIALS OR OBJECTS THAT MAY DAMAGE AIRCRAFT OR VEHICLES REMAIN. ANY REQUIRED CLEANING SHALL BE TO THE SATISFACTION OF THE RESIDENT ENGINEER AND AIRPORT OWNER AND IS INCIDENTAL

TO THE CONTRACT.

ALL WORK SHALL BE COMPLETED IN ACCORDANCE WITH THE APPROVED PROJECT SAFETY PLAN, ISSUED BY THE ILLINOIS DIVISION OF AERONAUTICS.

FAILURE TO USE THESE PRESCRIBED PROCEDURES OR ADHERE TO THE SAFETY REQUIREMENTS WILL RESULT IN THE SUSPENSION OF WORK.

**NOTIFICATIONS BY CONTRACTOR**

THE CONTRACTOR MUST NOTIFY THE RESIDENT ENGINEER AND THE AIRPORT OWNER 3 DAYS IN ADVANCE OF ANY REQUIRED PARTIAL OR COMPLETE CLOSING OF ANY RUNWAY, TAXIWAY OR APRON. THE DATE, TIME AND SCHEDULED DURATION OF THE CLOSING MUST BE APPROVED BY THE RESIDENT ENGINEER AND THE AIRPORT OWNER. THE CONTRACTOR SHALL NOTIFY THE RESIDENT ENGINEER AND AIRPORT OWNER 3 DAYS IN ADVANCE OF THE CONTRACTOR'S CLOSING OF OTHER ACTIVE ROADWAYS, AIRFIELD OR ROADWAY LIGHTING CIRCUITS, OR OTHER AIRPORT FACILITIES.

**CONTRACTOR'S USE OF SITE**

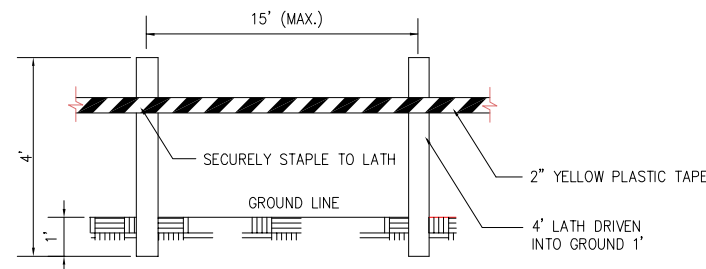
CONTRACTOR'S ACCESS TO THE PROJECT WHEN ON AIRPORT PROPERTY IS SHOWN IN THE PLANS. CONTRACTOR'S ACCESS TO THE AIRPORT ITSELF IS TO BE PROVIDED BY PUBLIC RIGHTS-OF-WAY. THE CONTRACTOR IS TO SECURE ALL NECESSARY PERMITS FOR THE USE OF ANY PUBLIC RIGHTS-OF-WAY AND IS TO MAINTAIN TRAFFIC ON THESE PUBLIC ROADS AT ALL TIMES, WITH THE COSTS OF PERMITTING, CLEANING AND REPAIRING OF PAVEMENT DAMAGED BY CONTRACTOR'S ACTIVITIES INCIDENTAL TO THE CONTRACT. USE OF AND REPAIRS TO ANY PUBLIC FACILITIES ARE TO BE COMPLETED TO THE SATISFACTION OF THE FACILITY'S OWNER.

THE CONTRACTOR IS TO PROVIDE TEMPORARY CONSTRUCTION ROADS WITHIN THE CONSTRUCTION LIMIT LINES AS MAY BE REQUIRED BY HIS ACTIVITIES. HEAVY VEHICLES SHALL NOT CROSS EXISTING PAVEMENT SURFACES EXCEPT AS APPROVED BY THE AIRPORT OWNER AND THE RESIDENT ENGINEER. ANY DAMAGE TO PAVEMENTS THAT MAY OCCUR BY THE CONTRACTOR'S ACTIVITIES SHALL BE REPAIRED AT THE CONTRACTOR'S EXPENSE AND TO THE SATISFACTION OF THE AIRPORT OWNER AND THE RESIDENT ENGINEER. FOR HAUL ROUTES MADE BY CONTRACTOR THROUGH GRASSED AREAS, CONTRACTOR SHALL GRADE, LEVEL, TOPSOIL, SEED AND MULCH AT THE END OF THE PROJECT, COST INCIDENTAL TO THE CONTRACT.

THE CONTRACTOR IS TO PROVIDE AN EQUIPMENT STORAGE AND PARKING AREA AT THE LOCATIONS SHOWN IN THE PLANS. IT IS THE CONTRACTOR'S RESPONSIBILITY TO MAINTAIN THE ACCESS ROADS AND THE STORAGE AREA DURING CONSTRUCTION AND TO RESTORE THE AREAS AT PROJECT COMPLETION TO CONDITIONS SUITABLE TO THE AIRPORT OWNER AND THE RESIDENT ENGINEER. AT THE AIRPORT OWNER'S DISCRETION, THE TEMPORARY FACILITIES MAY REMAIN, BUT THEY MUST BE LEFT IN CONDITIONS SUITABLE TO THE AIRPORT OWNER. THE COST OF PROVIDING, MAINTAINING AND RESTORING THE TEMPORARY FACILITIES IS INCIDENTAL TO THE CONTRACT.

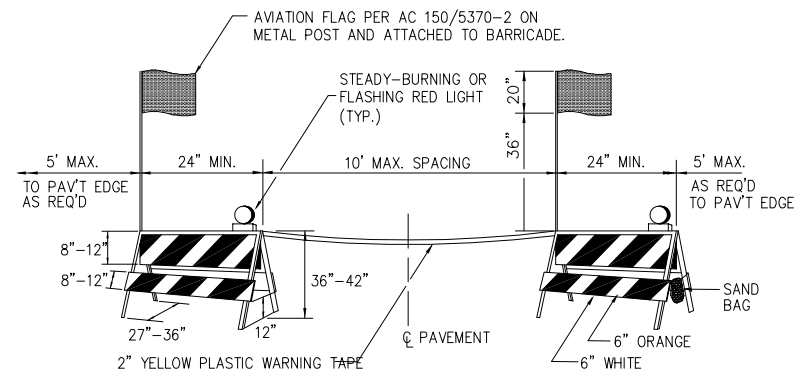
**UTILITY OUTAGES AND SHUTDOWNS**

THE CONTRACTOR SHALL PROVIDE 3 DAYS PRIOR NOTICE OF ANY OUTAGES OR SHUTDOWNS TO THE OWNER AND THE AGENCY OWNING THE AFFECTED UTILITY. THE CONTRACTOR SHALL PROVIDE ANY TEMPORARY CONNECTIONS OR OTHER MEASURES AS MAY BE REQUIRED TO MAINTAIN SERVICE AS MAY BE REQUIRED BY THE OWNING AGENCY AT NO COST TO THE OWNER.



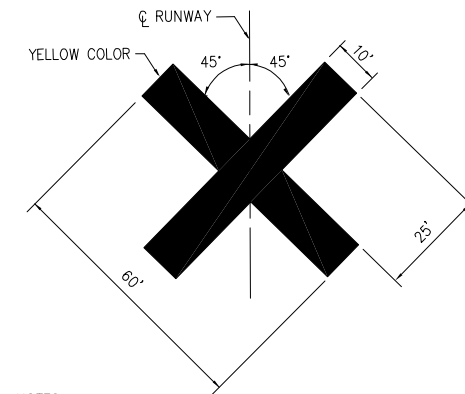
MATERIALS ARE TO BE APPROVED BY ENGINEER PRIOR TO INSTALLATION. COST OF MATERIALS, INSTALLATION, RELOCATION AND MAINTENANCE OF LATHING AND WARNING TAPE IS TO BE INCIDENTAL TO THE CONTRACT.

**DETAIL A  
LATHING AND WARNING TAPE**



**DETAIL B  
STANDARD PAVEMENT BARRICADES**

BARRICADES ARE TO BE OF IDOT TYPE II. A STEADY-BURNING OR FLASHING RED LIGHT FACING PASSING TRAFFIC IS TO BE MOUNTED ABOVE THE TOP OF EACH BARRICADE FRAME. THE BARRICADE IS TO BE STABILIZED FROM WIND BY SANDBAGS PLACED ON THE FRAME OR OTHER METHODS APPROVED BY THE RESIDENT ENGINEER. NO PART OF THE REFLECTORIZED PORTION OF THE BARRICADE IS TO BE OBSTRUCTED IN ANY MANNER. COST OF FURNISHING, INSTALLING, RELOCATING, MAINTAINING AND REMOVING BARRICADES IS TO BE PAID FOR UNDER ITEM AR150530 TRAFFIC MAINTENANCE.



**NOTES**

- VINYL MARKERS SHALL BE FURNISHED BY THE CONTRACTOR. THE CONTRACTOR SHALL FURNISH ALL LABOR AND MATERIALS FOR INSTALLING, RELOCATING AND MAINTAINING THE MARKERS, WHOSE COST SHALL BE PAID UNDER ITEM AR150530 TRAFFIC MAINTENANCE.
- CONTRACTOR SHALL LOCATE THE MARKERS ON TOP OF THE RUNWAY NUMERALS DURING CLOSURE OF THE RUNWAY.
- MARKERS TO BE SECURED BY CONTRACTOR AS RECOMMENDED BY THE MANUFACTURER.

**DETAIL C  
RUNWAY CLOSURE MARKERS**

FEB 27, 2020 9:11 AM HALUSM00682 1:19:08519A001019A0070DCADWARPORTRISHEETS/SAFETYNOTES.DWG



Offices Nationwide  
www.hanson-inc.com

Hanson Professional Services Inc.  
750 Warrenville, Suite 200  
Lisle, IL 60532  
phone: 630.990.3800  
fax: 630.990.3801

Illinois Licensed  
Professional Service Corporation  
#184-001084

TRI-TOWNSHIP AIRPORT AUTHORITY  
8049 Illinois Route 84  
Savanna, Illinois 61074

**AIRFIELD PAVEMENT  
MAINTENANCE  
INCLUDING CRACK  
SEALING AND  
RE-MARKING**

SBGP No:  
3-17-SBGP-120/TBD  
IDA No: SFY-4650

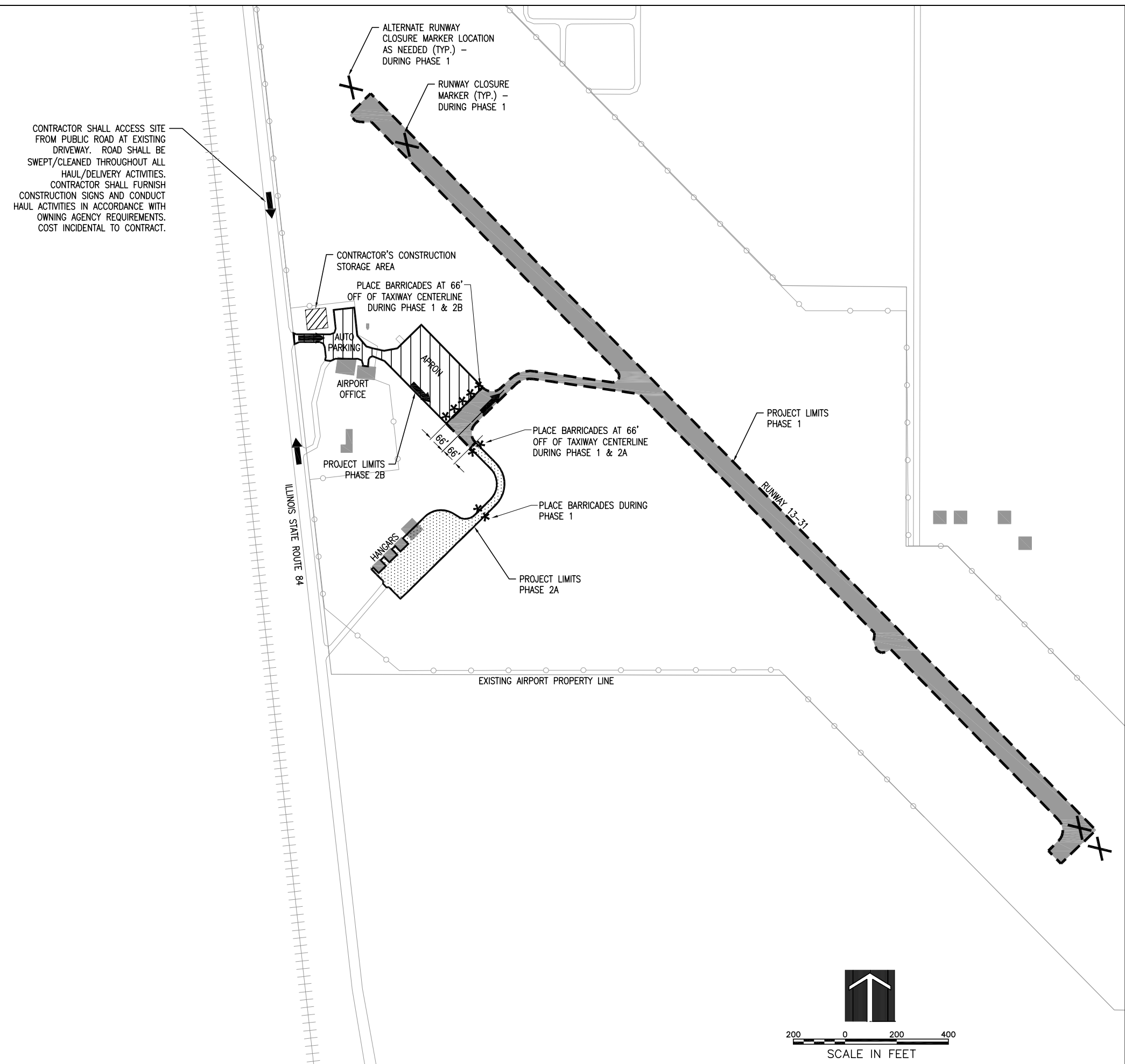
Contract No. TR009

NO.	DATE	DESCRIPTION		
		DES	DWN	REV

ISSUE: JUNE 7, 2019  
PROJECT NO: 19A0010  
CAD FILE: SAFETYNOTES.DWG  
DESIGN BY: LDH 4/9/19  
DRAWN BY: LDH 4/9/19  
REVIEWED BY: RMH 07/26/19

SHEET TITLE

**CONSTRUCTION  
SAFETY NOTES AND  
DETAILS**



**NOTES**

1. ALL CONTRACTOR ACTIVITIES SHALL TAKE PLACE WITHIN CONSTRUCTION LIMIT LINES AS SHOWN.
2. ALL CONSTRUCTION EQUIPMENT WILL BE LIMITED TO A HEIGHT OF 25 FEET UNLESS PRIOR APPROVAL IS GIVEN BY THE ENGINEER (SEE SPECIAL PROVISIONS).
3. CONTRACTOR'S EQUIPMENT MAY NOT DISRUPT FLIGHT OPERATIONS ON RUNWAY 13-31 AT ANY TIME DURING PHASE 2.
4. TO MINIMIZE DISTURBANCE TO TRI-TOWNSHIP AVIATION COMMUNITY CONSTRUCTION WILL BE LIMITED TO 8 HOURS PER DAY AND WILL BE COORDINATED WITH THE AIRPORT MANAGER. AT THE CONCLUSION OF EACH DAY'S WORK, THE RUNWAY WILL BE OPEN TO AIR TRAFFIC. THIS IS THE CASE EVEN IF PAVEMENT MARKINGS MAY BE PARTIALLY OBSCURED.
5. TRAFFIC TO BE MAINTAINED ON AIRPORT ROADWAYS AT ALL TIMES.
6. CONTRACTOR VEHICLES SHALL OPERATE IN ACCORDANCE WITH SPECIAL PROVISIONS SECTION 40 WHEN WITHIN THE AIRPORT OPERATIONS AREA.
7. SEE CONSTRUCTION SITE PLAN ON SHEET 3 AND SAFETY NOTES ON SHEET 5.

THE FOLLOWING ITEMS ARE TO BE COMPLETED IN PHASE 1:

1. INSTALLATION OF PROVISIONS OF TRAFFIC MAINTENANCE.
2. CRACK REPAIR WITHIN PHASE 1 LIMITS.
3. PAVEMENT MARKING WITHIN PHASE 1 LIMITS

THE FOLLOWING ITEMS ARE TO BE COMPLETED IN PHASE 2:

1. CRACK REPAIR WITHIN PHASE 2 LIMITS.
2. PAVEMENT MARKING WITHIN PHASE 2 LIMITS

\*\*\*\*\* STANDARD PAVEMENT BARRICADES

PHASE 1

PHASE 2A

PHASE 2B

**AIRFIELD PAVEMENT MAINTENANCE INCLUDING CRACK SEALING AND RE-MARKING**

SBGP No:  
3-17-SBGP-120/TBD  
IDA No: SFY-4650

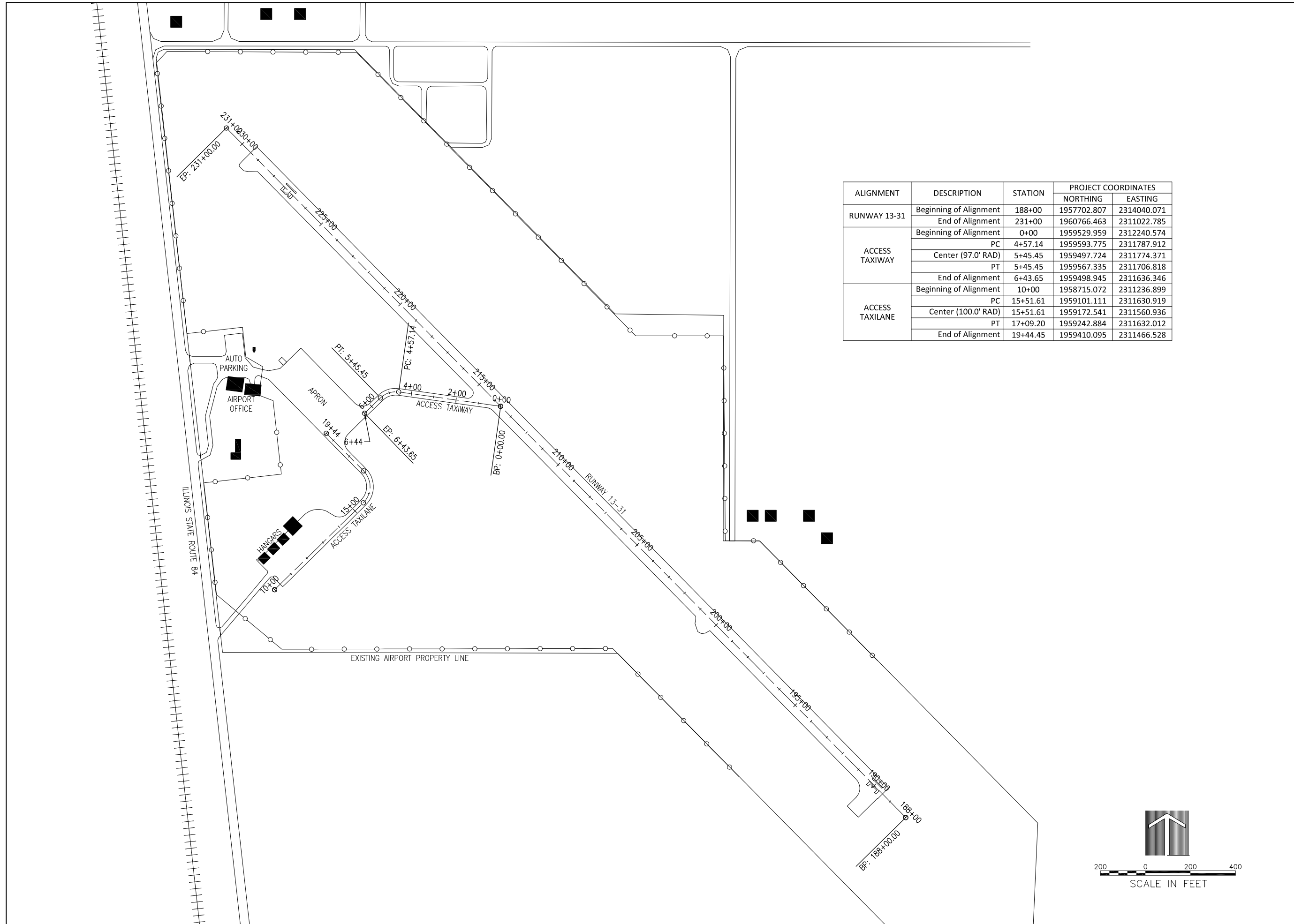
Contract No. TR009


NO.	DATE	DESCRIPTION		
		DES	DWN	REV

ISSUE: JUNE 7, 2019  
PROJECT NO: 19A0010  
CAD FILE: PHASING.DWG  
DESIGN BY: LDH 4/9/19  
DRAWN BY: LDH 4/9/19  
REVIEWED BY: RMH 07/26/19

SHEET TITLE

**PHASING PLAN**



ALIGNMENT	DESCRIPTION	STATION	PROJECT COORDINATES	
			NORTHING	EASTING
RUNWAY 13-31	Beginning of Alignment	188+00	1957702.807	2314040.071
	End of Alignment	231+00	1960766.463	2311022.785
ACCESS TAXIWAY	Beginning of Alignment	0+00	1959529.959	2312240.574
	PC	4+57.14	1959593.775	2311787.912
	Center (97.0' RAD)	5+45.45	1959497.724	2311774.371
	PT	5+45.45	1959567.335	2311706.818
	End of Alignment	6+43.65	1959498.945	2311636.346
ACCESS TAXILANE	Beginning of Alignment	10+00	1958715.072	2311236.899
	PC	15+51.61	1959101.111	2311630.919
	Center (100.0' RAD)	15+51.61	1959172.541	2311560.936
	PT	17+09.20	1959242.884	2311632.012
	End of Alignment	19+44.45	1959410.095	2311466.528

**AIRFIELD PAVEMENT MAINTENANCE INCLUDING CRACK SEALING AND RE-MARKING**

SBGP No:  
3-17-SBGP-120/TBD  
IDA No: SFY-4650

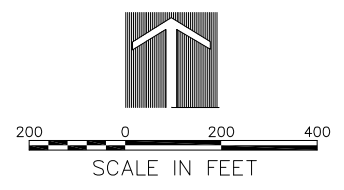
Contract No. TR009

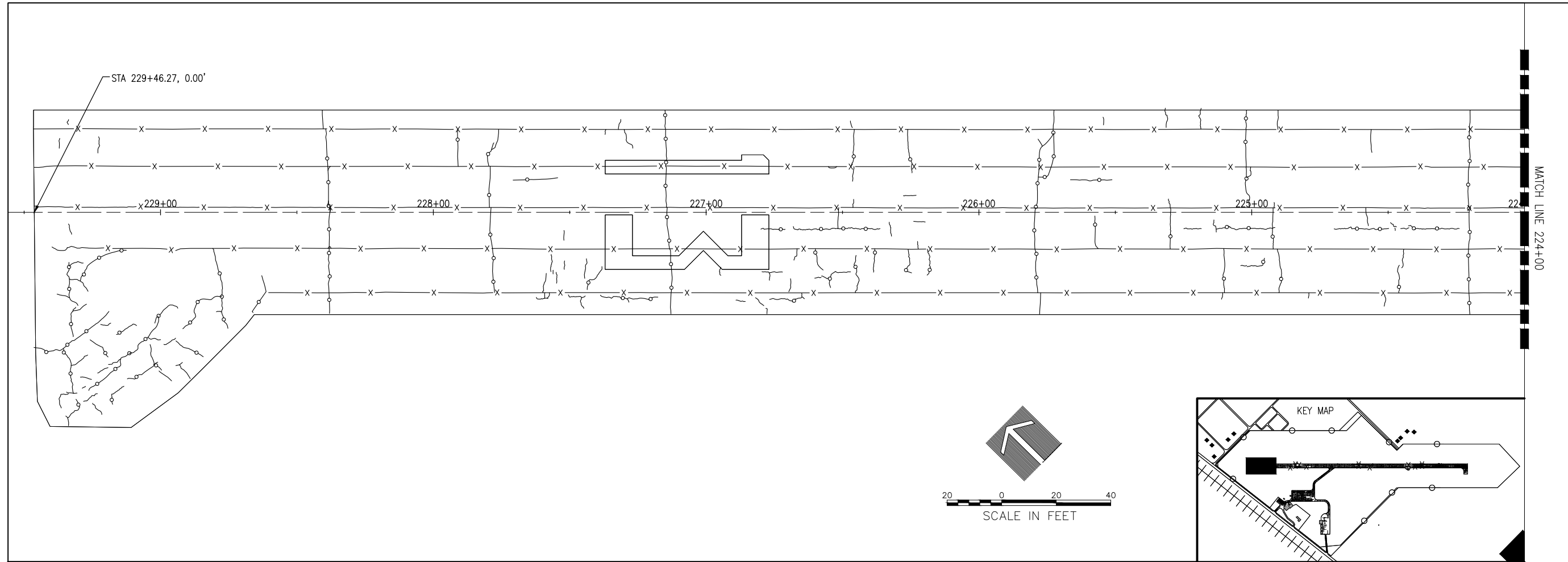

NO.	DATE	DESCRIPTION		
		DES	DWN	REV

ISSUE: JUNE 7, 2019  
PROJECT NO: 19A0010  
CAD FILE: ALIGN.DWG  
DESIGN BY: LDH 4/9/19  
DRAWN BY: LDH 4/9/19  
REVIEWED BY: RMH 07/26/19

SHEET TITLE

**ALIGNMENT DATA TABLE**



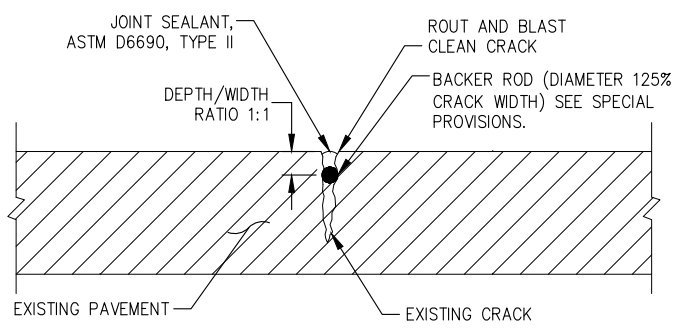


**LEGEND**

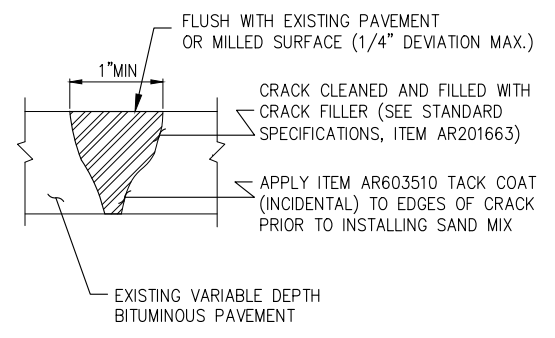
- CLEAN & SEAL BITUMINOUS CRACKS, AR201661, TYPE A CRACK
- SAND MIX CRACK REPAIR, AR201663, TYPE B CRACK

**NOTES**

1. FOR ALIGNMENT DATA TABLE SEE SHEET 7.
2. THE CRACK LOCATIONS SHOWN IN THE PLANS WERE SURVEYED FOR DESIGN PURPOSES. THE ACTUAL LOCATION OF CRACKS TO BE REPAIR SHALL BE DETERMINED BY THE RESIDENT ENGINEER PRIOR TO REPAIRS.



**CLEAN AND SEAL CRACKS  
TYPE A**



**NOTES:**

1. CRACKS TO BE FILLED WITH SAND MIX SHALL BE AS SHOWN IN PLANS OR AS DESIGNATED BY THE RESIDENT ENGINEER.
2. SAND MIX CRACK REPAIR SHALL BE USED ON ALL TYPE B CRACKS, OR AS DESIGNATED BY THE RESIDENT ENGINEER.
3. CONTRACTOR SHALL ROUT, CRACK PLOW AND REMOVE LOOSE FILLER, LOOSE AGGREGATE AND LAITANCE WITH COMPRESSED AIR AS SPECIFIED PRIOR TO TACK COAT AND SEALING.

**SAND MIX CRACK REPAIR DETAIL  
TYPE B**

**AIRFIELD PAVEMENT  
MAINTENANCE  
INCLUDING CRACK  
SEALING AND  
RE-MARKING**

SBGP No:  
3-17-SBGP-120/TBD  
IDA No: SFY-4650

Contract No. TR009

NO.	DATE	DESCRIPTION		
		DES	DWN	REV

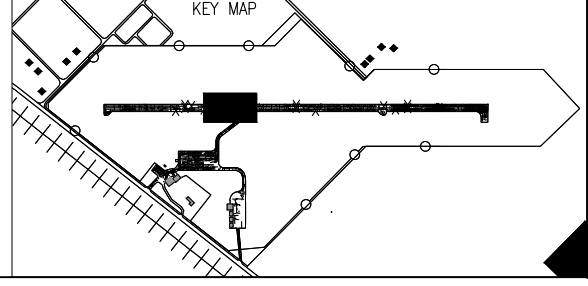
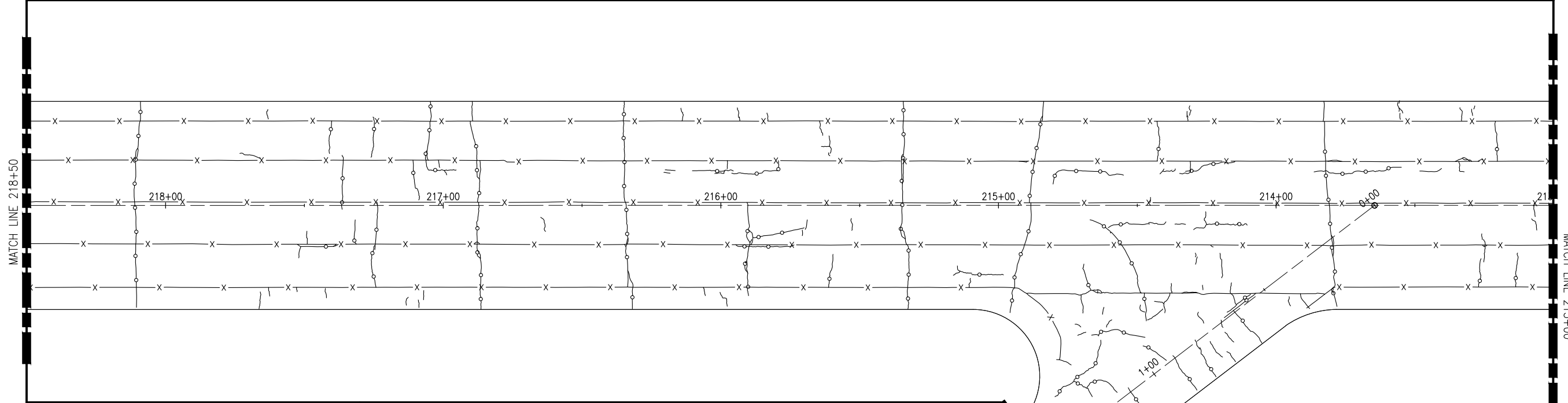
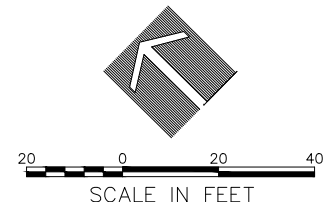
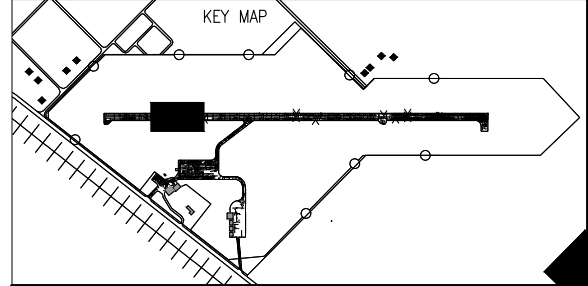
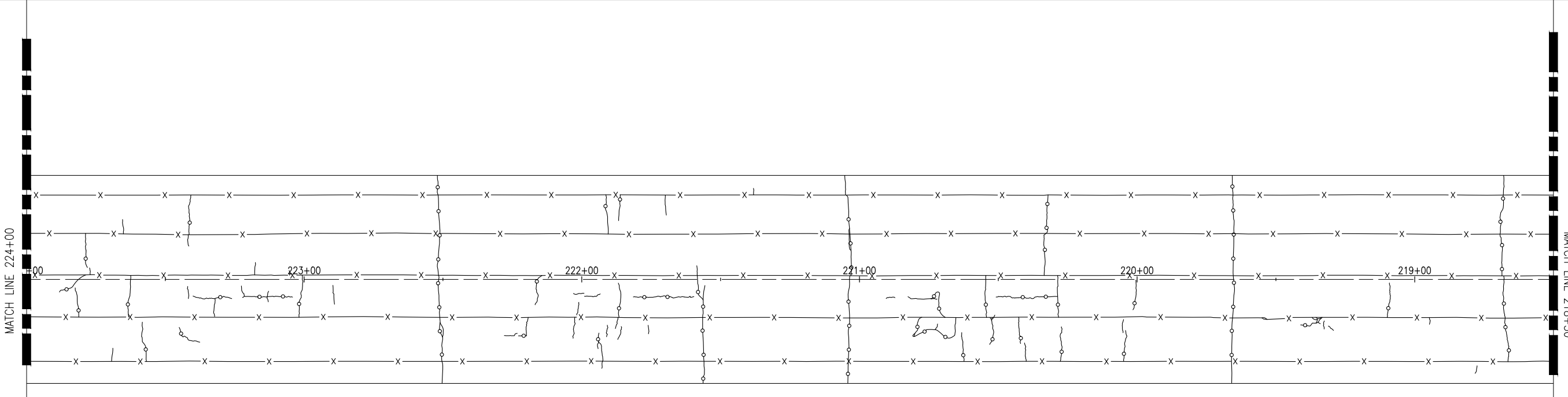
ISSUE: JUNE 7, 2019  
PROJECT NO: 19A0010  
CAD FILE: CRACK.DWG  
DESIGN BY: LDH 4/9/19  
DRAWN BY: LDH 4/9/19  
REVIEWED BY: RMH 07/26/19

SHEET TITLE

**CRACK REPAIR PLAN  
AND DETAILS  
RUNWAY 13-31  
229+46 - 224+00**

FEB 27, 2020 9:26 AM HALISM00682 1\19\JOBS\19A0010\19A0010\CAD\AIRPORT\ISHEET\CRACK.DWG





**NOTES**

- FOR NOTES AND LEGEND SEE SHEET 8

**AIRFIELD PAVEMENT  
MAINTENANCE  
INCLUDING CRACK  
SEALING AND  
RE-MARKING**

SBGP No:  
3-17-SBGP-120/TBD  
IDA No: SFY-4650

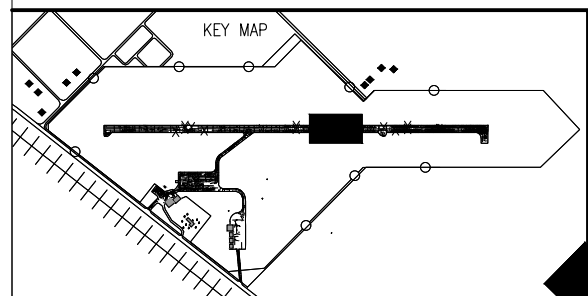
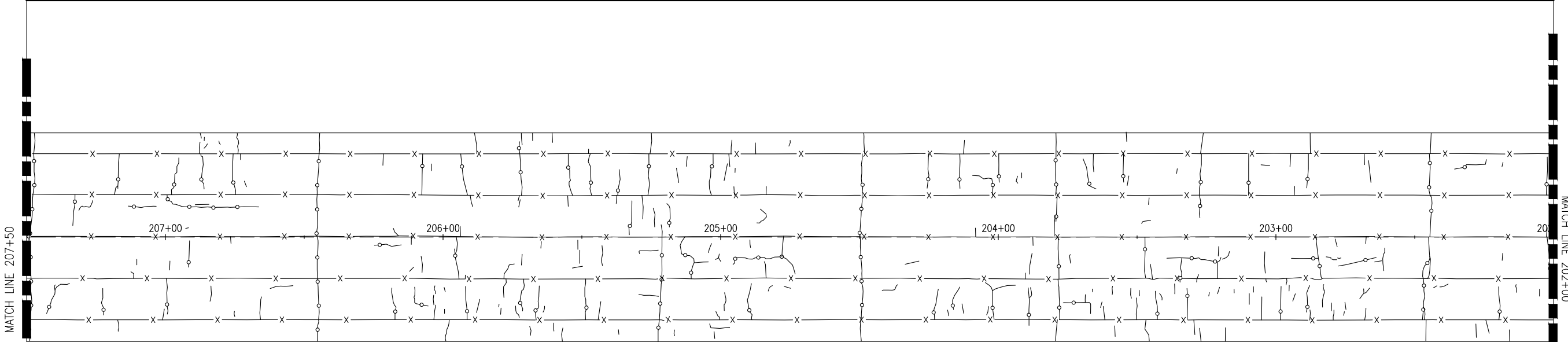
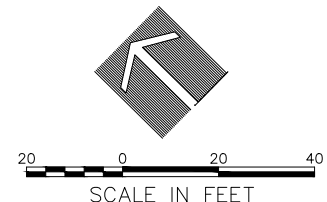
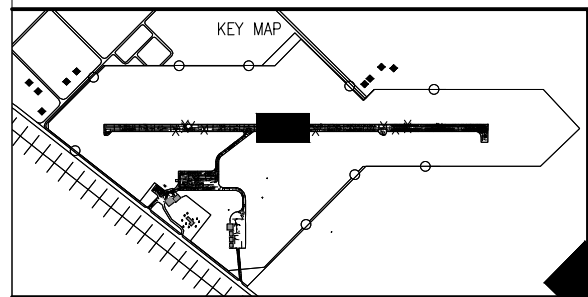
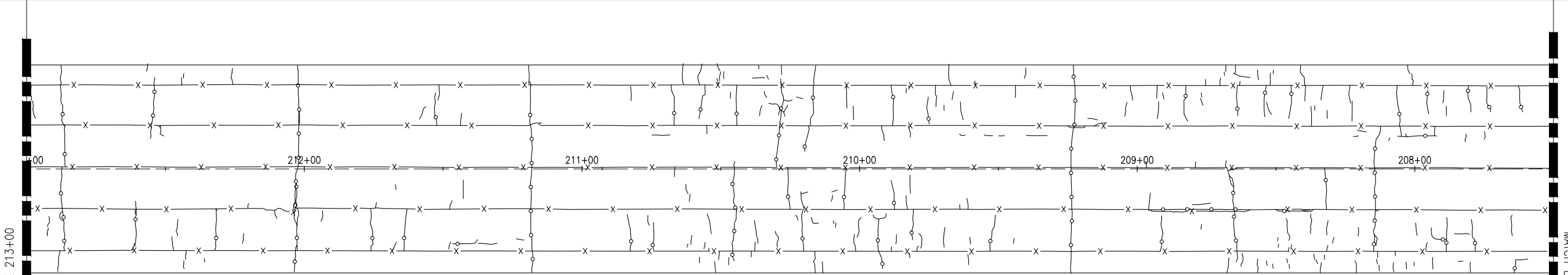
Contract No. TR009

NO.	DATE	DESCRIPTION		
		DES	DWN	REV

ISSUE: JUNE 7, 2019  
PROJECT NO: 19A0010  
CAD FILE: CRACK.DWG  
DESIGN BY: LDH 4/11/19  
DRAWN BY: LDH 4/11/19  
REVIEWED BY: RMH 07/26/19

SHEET TITLE

**CRACK REPAIR PLAN  
RUNWAY 13-31  
224+00 - 213+00**



**NOTES**  
1. FOR NOTES AND LEGEND SEE SHEET 8

**AIRFIELD PAVEMENT  
MAINTENANCE  
INCLUDING CRACK  
SEALING AND  
RE-MARKING**

SBGP No:  
3-17-SBGP-120/TBD  
IDA No: SFY-4650

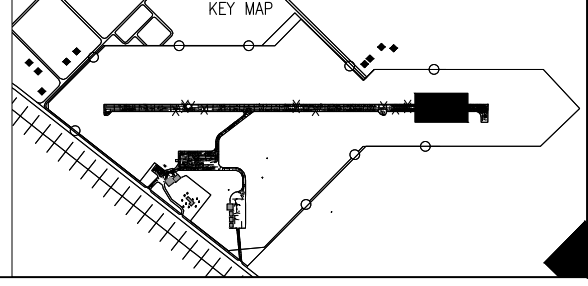
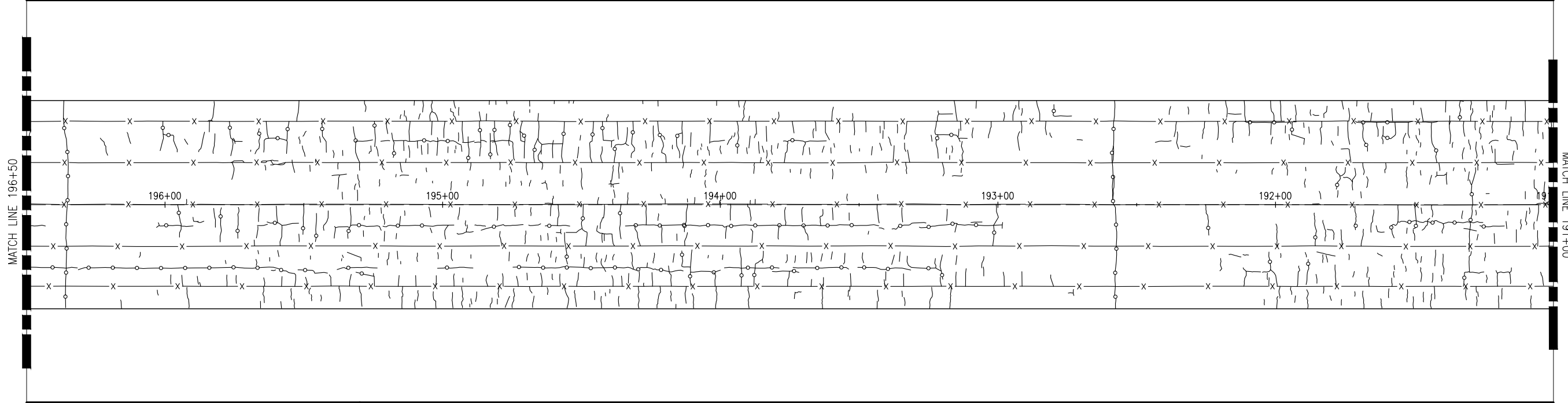
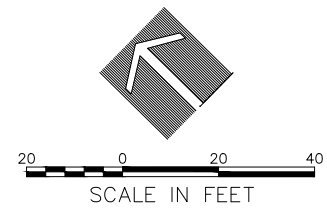
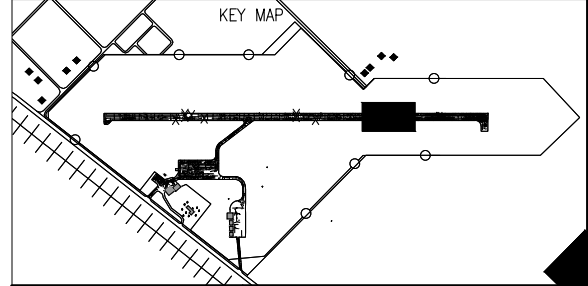
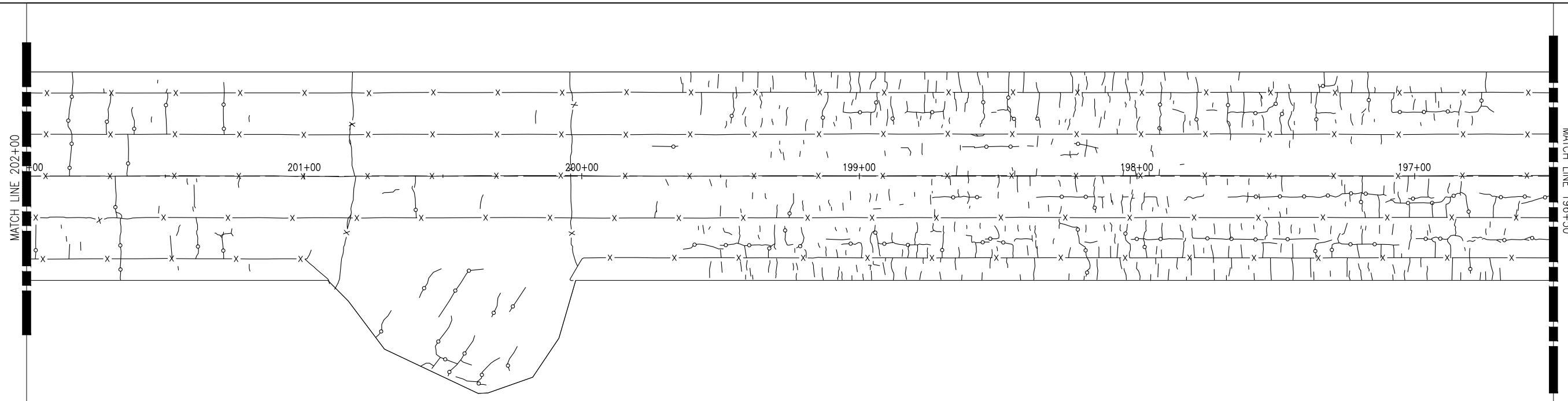
Contract No. TR009

NO.	DATE	DESCRIPTION		
		DES	DWN	REV

ISSUE: JUNE 7, 2019  
PROJECT NO: 19A0010  
CAD FILE: CRACK.DWG  
DESIGN BY: LDH 4/11/19  
DRAWN BY: LDH 4/11/19  
REVIEWED BY: RMH 07/26/19

SHEET TITLE

**CRACK REPAIR  
PLAN RUNWAY 13-31  
213+00 - 202+00**



NOTES

- FOR NOTES AND LEGEND SEE SHEET 8

**AIRFIELD PAVEMENT  
MAINTENANCE  
INCLUDING CRACK  
SEALING AND  
RE-MARKING**

SBGP No:  
3-17-SBGP-120/TBD  
IDA No: SFY-4650

Contract No. TR009

NO.	DATE	DESCRIPTION		
		DES	DWN	REV

ISSUE: JUNE 7, 2019  
PROJECT NO: 19A0010  
CAD FILE: CRACK.DWG  
DESIGN BY: LDH 4/11/19  
DRAWN BY: LDH 4/11/19  
REVIEWED BY: RMH 07/26/19

SHEET TITLE

**CRACK REPAIR  
PLAN RUNWAY  
13-31 202+00 -  
191+00**

**AIRFIELD PAVEMENT  
MAINTENANCE  
INCLUDING CRACK  
SEALING AND  
RE-MARKING**

SBGP No:  
3-17-SBGP-120/TBD  
IDA No: SFY-4650

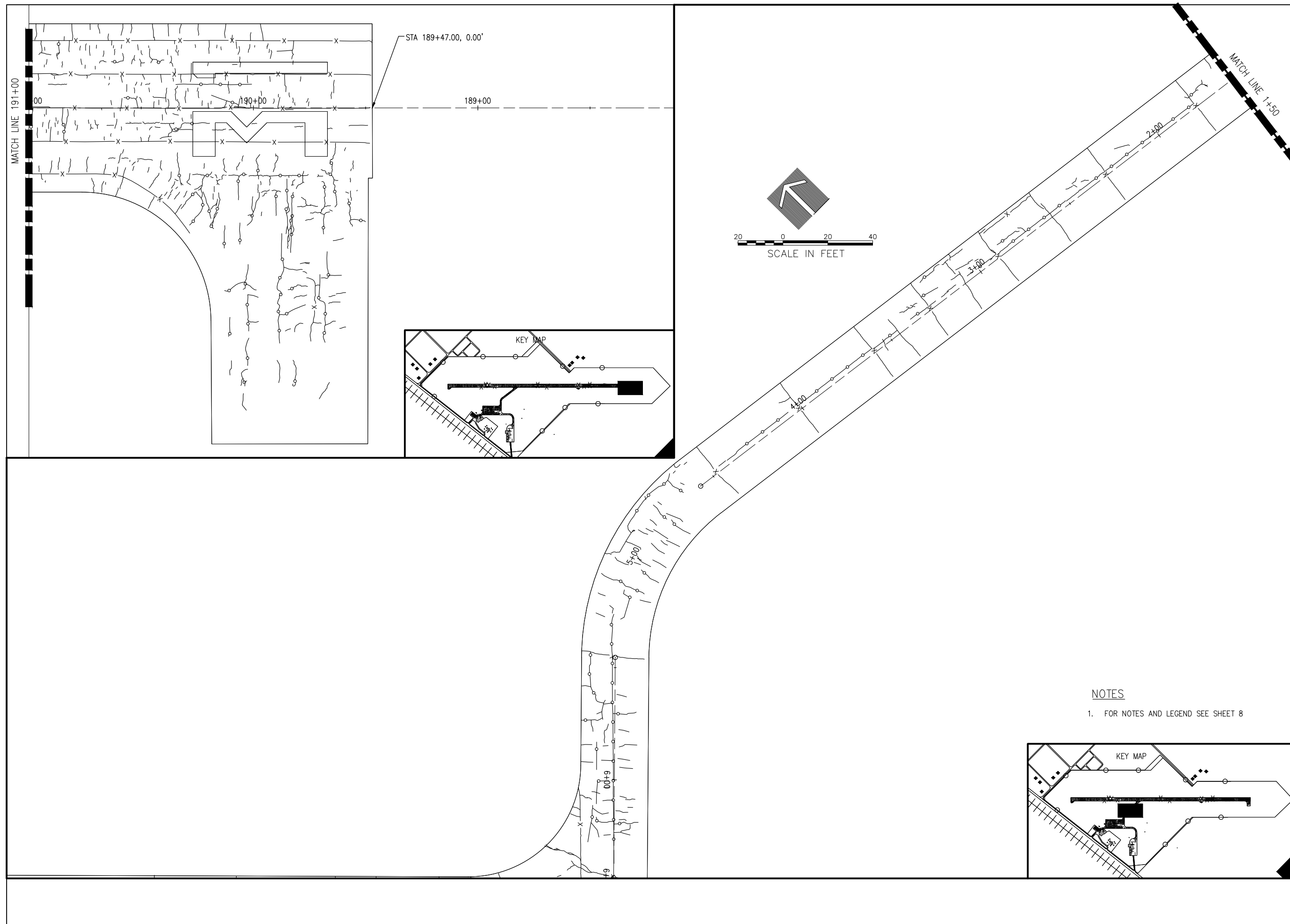
Contract No. TR009

NO.	DATE	DESCRIPTION		
		DES	DWN	REV

ISSUE: JUNE 7, 2019  
PROJECT NO: 19A0010  
CAD FILE: CRACK.DWG  
DESIGN BY: LDH 4/11/19  
DRAWN BY: LDH 4/11/19  
REVIEWED BY: RMH 07/26/19

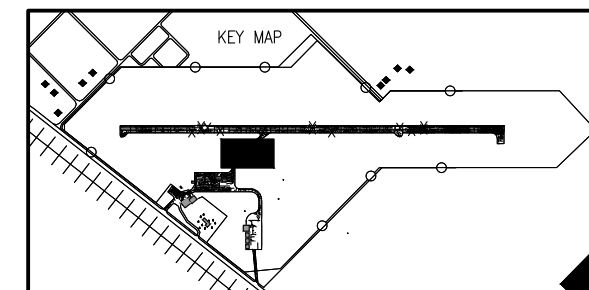
SHEET TITLE

**CRACK REPAIR PLAN  
RUNWAY 13-31  
191+00 - 189+47 &  
TAXIWAY**



NOTES

- FOR NOTES AND LEGEND SEE SHEET 8



FEB 27, 2020 9:27 AM HALISM00682 1\19\JOBS\19A001\19A001\19A001\CAD\AIRPORT\19A001\CRACK.DWG

**AIRFIELD PAVEMENT  
MAINTENANCE  
INCLUDING CRACK  
SEALING AND  
RE-MARKING**

SBGP No:  
3-17-SBGP-120/TBD  
IDA No: SFY-4650

Contract No. TR009

NO.	DATE	DESCRIPTION		
		DES	DWN	REV

ISSUE: JUNE 7, 2019

PROJECT NO: 19A0010

CAD FILE: CRACK.DWG

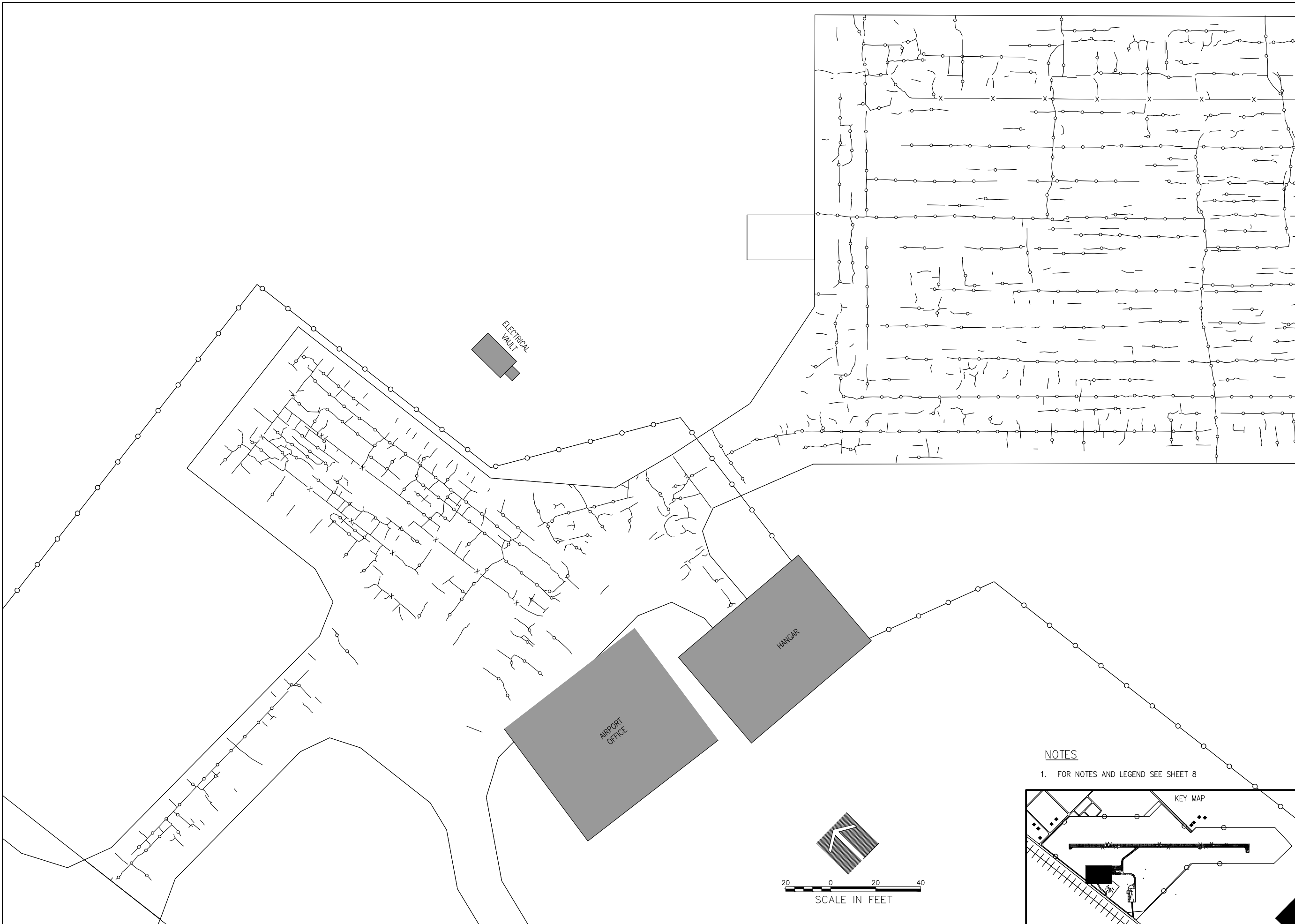
DESIGN BY: LDH 4/11/19

DRAWN BY: LDH 4/11/19

REVIEWED BY: RMH 07/26/19

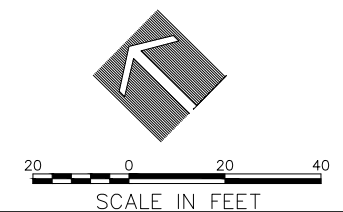
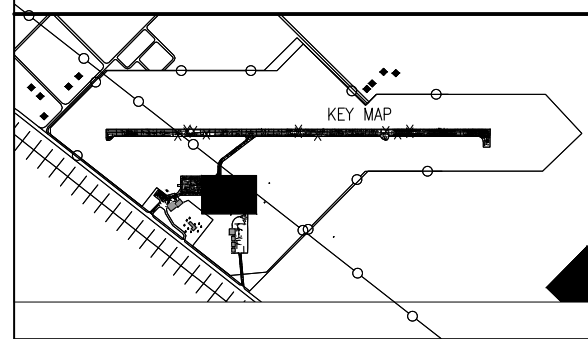
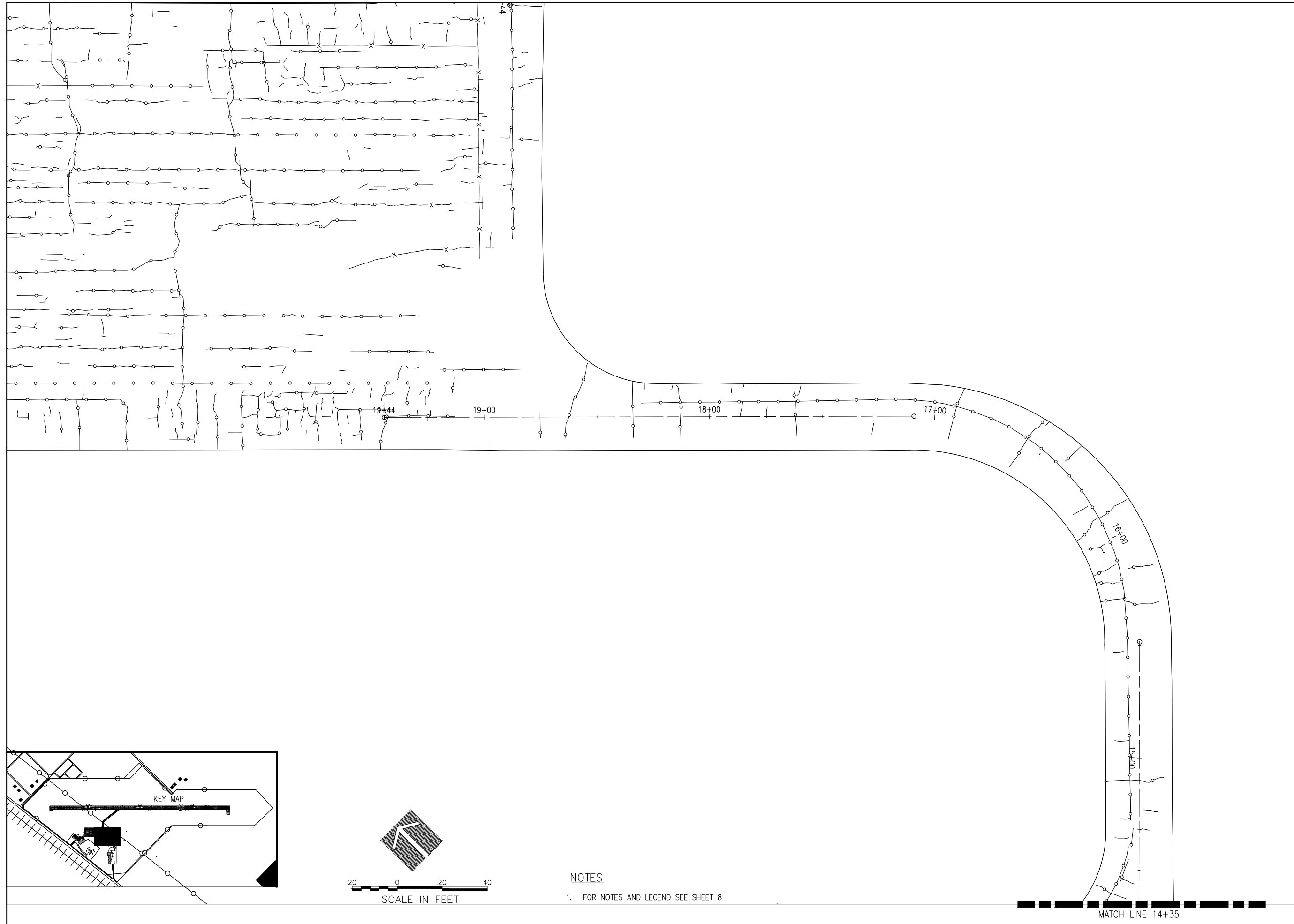
SHEET TITLE

**CRACK REPAIR PLAN  
APRON & AUTOPARK**



**NOTES**

- FOR NOTES AND LEGEND SEE SHEET 8



**NOTES**  
1. FOR NOTES AND LEGEND SEE SHEET 8

**AIRFIELD PAVEMENT MAINTENANCE INCLUDING CRACK SEALING AND RE-MARKING**

SBGP No:  
3-17-SBGP-120/TBD  
IDA No: SFY-4650

Contract No. TR009

NO.	DATE	DESCRIPTION		
		DES	DWN	REV

ISSUE: JUNE 7, 2019  
PROJECT NO: 19A0010  
CAD FILE: CRACK.DWG  
DESIGN BY: LDH 4/11/19  
DRAWN BY: LDH 4/11/19  
REVIEWED BY: RMH 07/26/19

SHEET TITLE

**CRACK REPAIR PLAN TAXILANE 19+44 - 14+35**

FEB 27, 2020 9:27 AM H:\ALISM\00682\1\19A0010\19A0010\CAD\AIRPORT\ISHEET\CRACK.DWG

**AIRFIELD PAVEMENT  
MAINTENANCE  
INCLUDING CRACK  
SEALING AND  
RE-MARKING**

SBGP No:  
3-17-SBGP-120/TBD  
IDA No: SFY-4650

Contract No. TR009

NO.	DATE	DESCRIPTION		
		DES	DWN	REV

ISSUE: JUNE 7, 2019

PROJECT NO: 19A0010

CAD FILE: CRACK.DWG

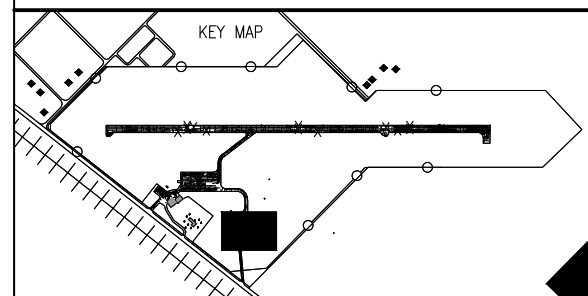
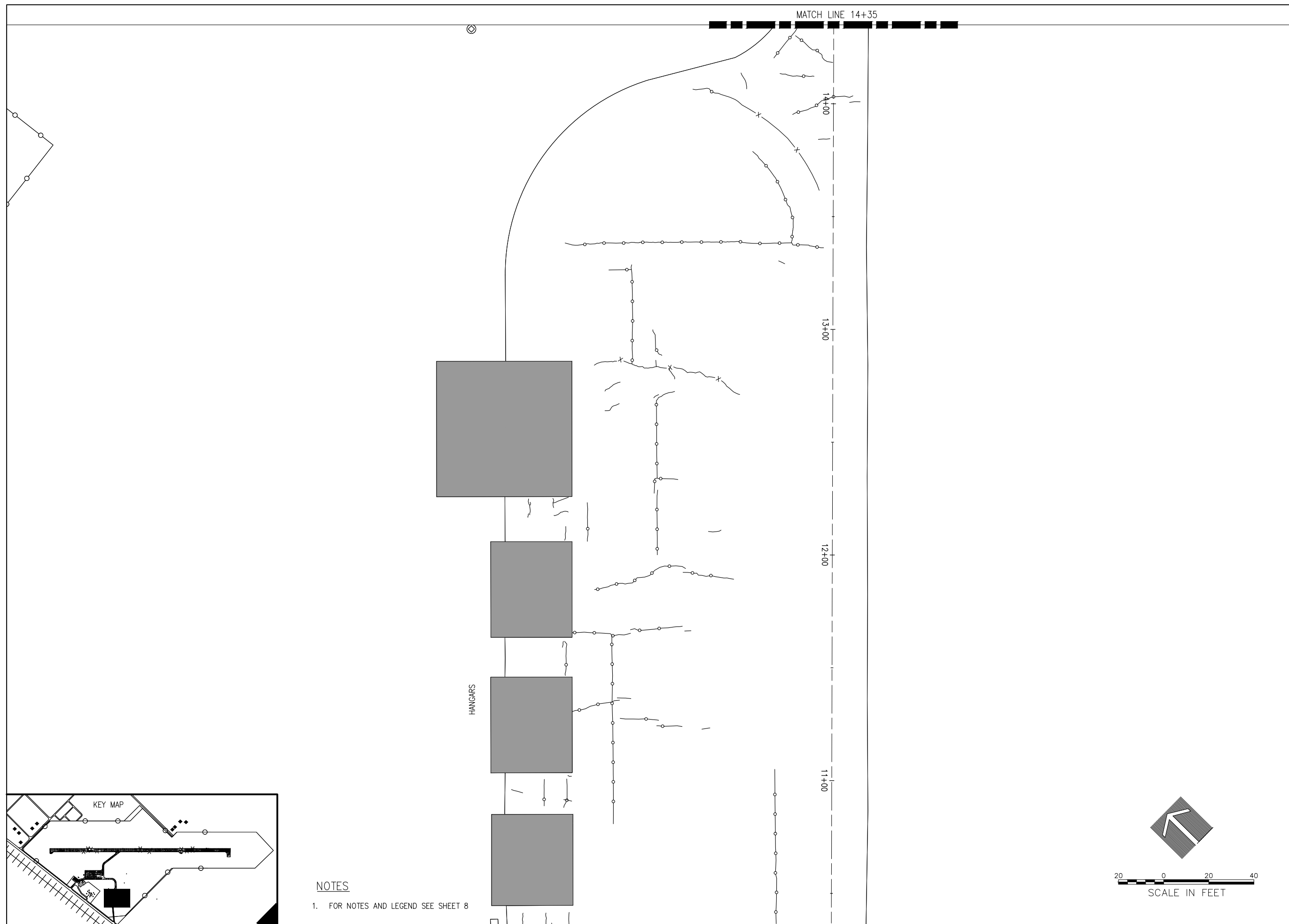
DESIGN BY: LDH 4/11/19

DRAWN BY: LDH 4/11/19

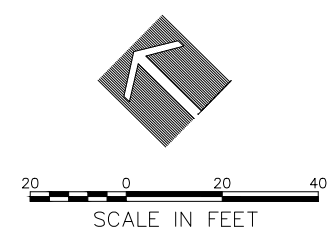
REVIEWED BY: RMH 07/26/19

SHEET TITLE

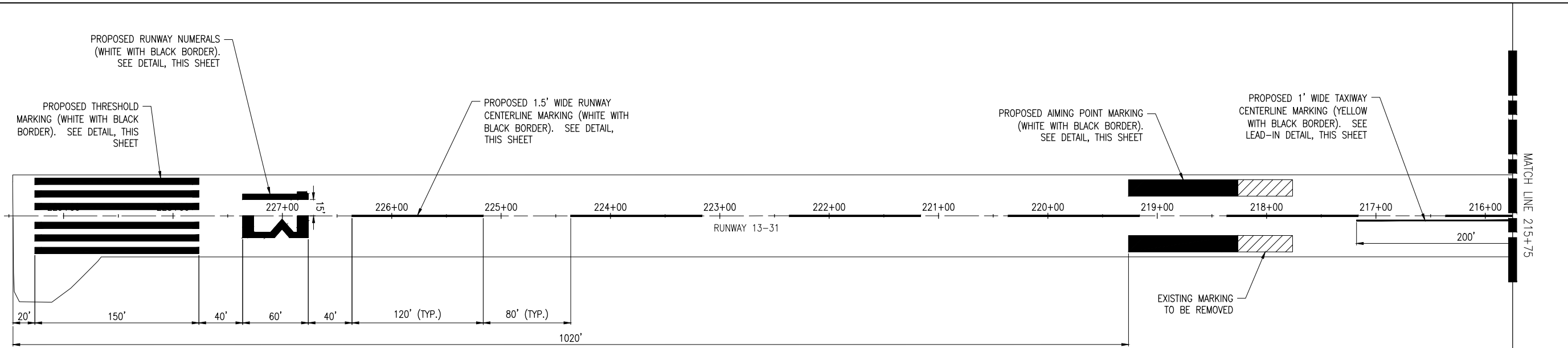
**CRACK REPAIR PLAN  
TAXILANE 14+35 -  
10+35**



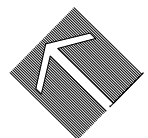
**NOTES**  
1. FOR NOTES AND LEGEND SEE SHEET 8



FEB 27, 2020 9:27 AM H:\LSM\00682\1\19A001\19A00101\9A00101\CAD\AIRPORT\SHEET\CRACK.DWG

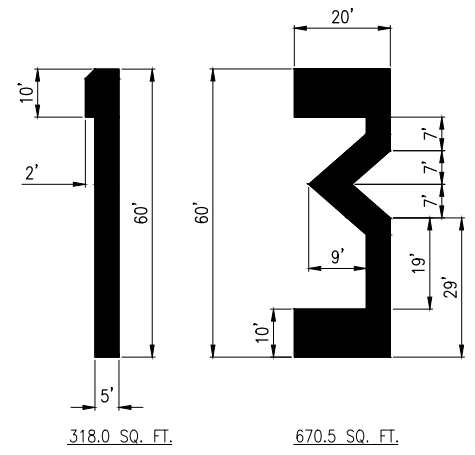


MATCH LINE 215+75

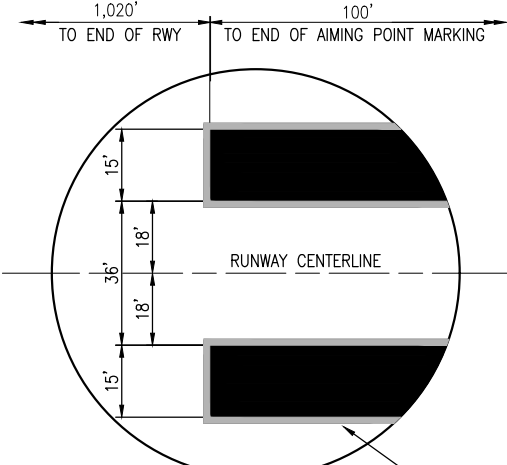


**NOTES:**

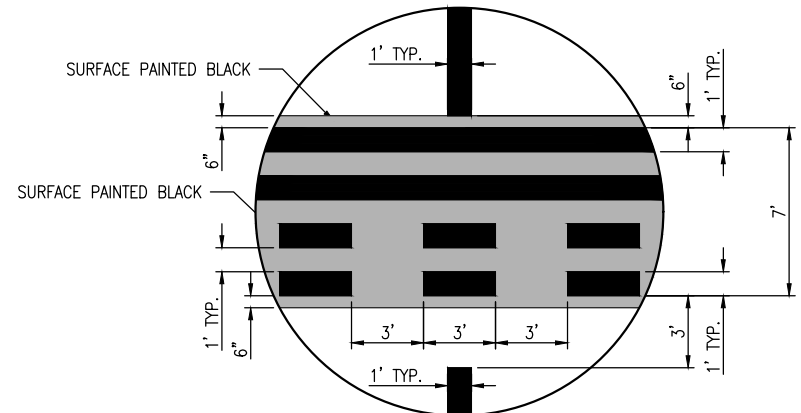
1. GLASS SPHERES SHALL BE USED FOR ALL WHITE AND YELLOW MARKINGS. GLASS SPHERES NOT REQUIRED FOR BLACK MARKING.
2. WATERBORNE MARKING SHALL BE USED ON BITUMINOUS PAVEMENT.
3. 6" BLACK BORDER REQUIRED AROUND ALL PAVEMENT MARKINGS.
4. EXISTING MARKING TO BE REMOVED SHALL BE REMOVED USING WATER BLASTING.



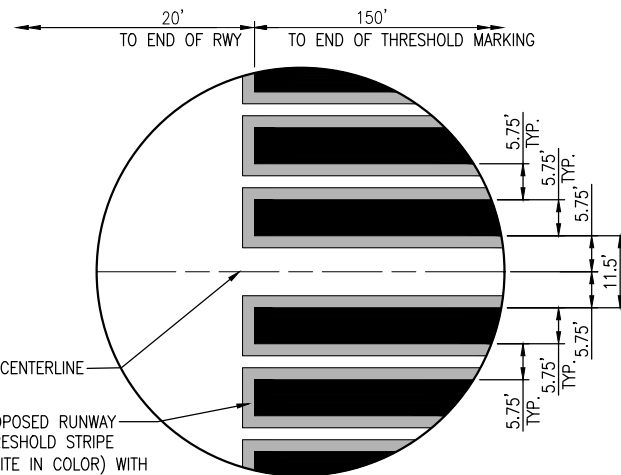
**PROPOSED RUNWAY NUMERALS DETAIL**  
"NOT TO SCALE"



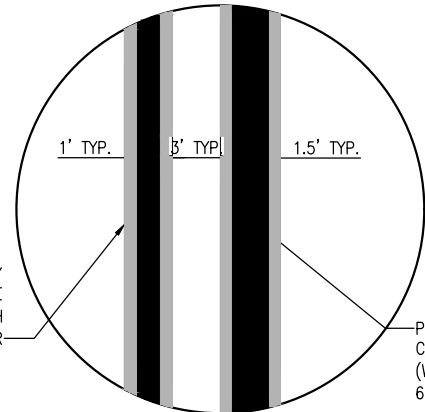
**AIMING POINT DETAIL**  
"NOT TO SCALE"



**HOLDING POSITION DETAIL**  
"NOT TO SCALE"



**THRESHOLD STRIPE DETAIL**  
"NOT TO SCALE"



**TAXIWAY CENTERLINE LEAD-IN DETAIL**  
"NOT TO SCALE"

**AIRFIELD PAVEMENT MAINTENANCE INCLUDING CRACK SEALING AND RE-MARKING**

SBGP No: 3-17-SBGP-120/TBD  
IDA No: SFY-4650

Contract No. TR009

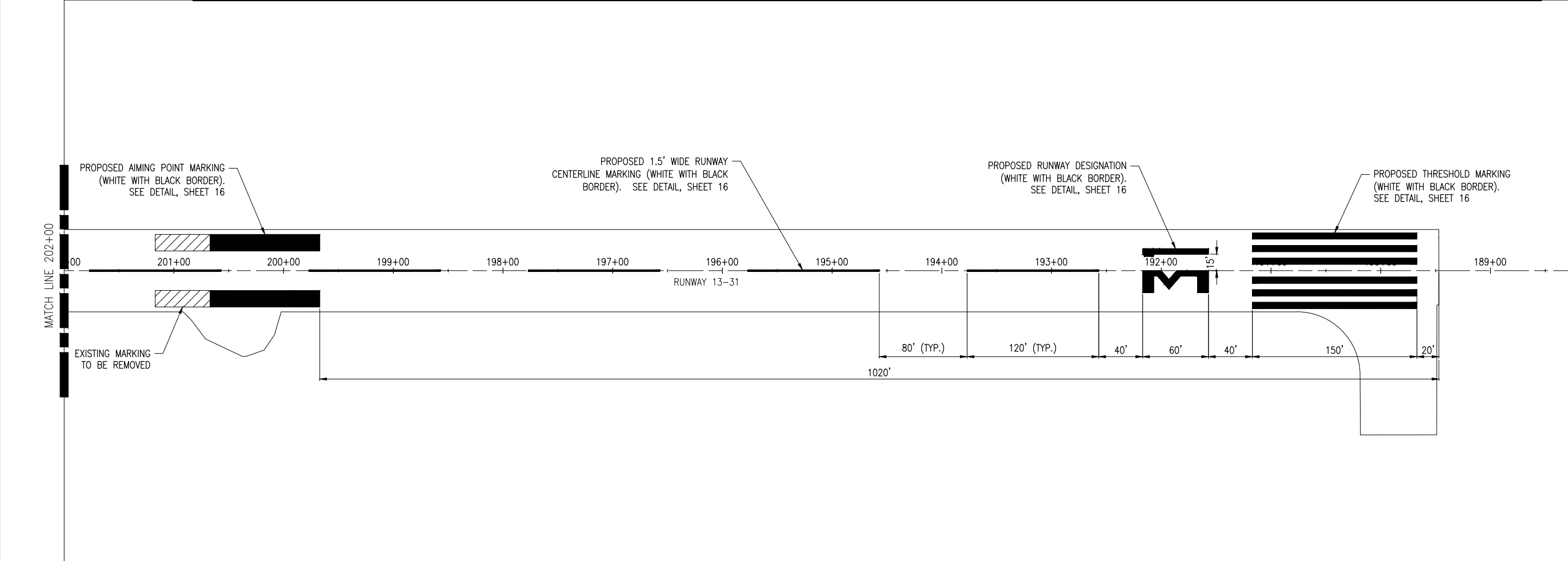
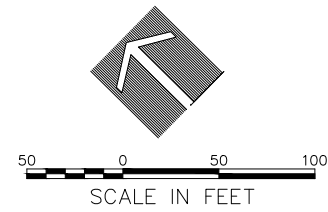
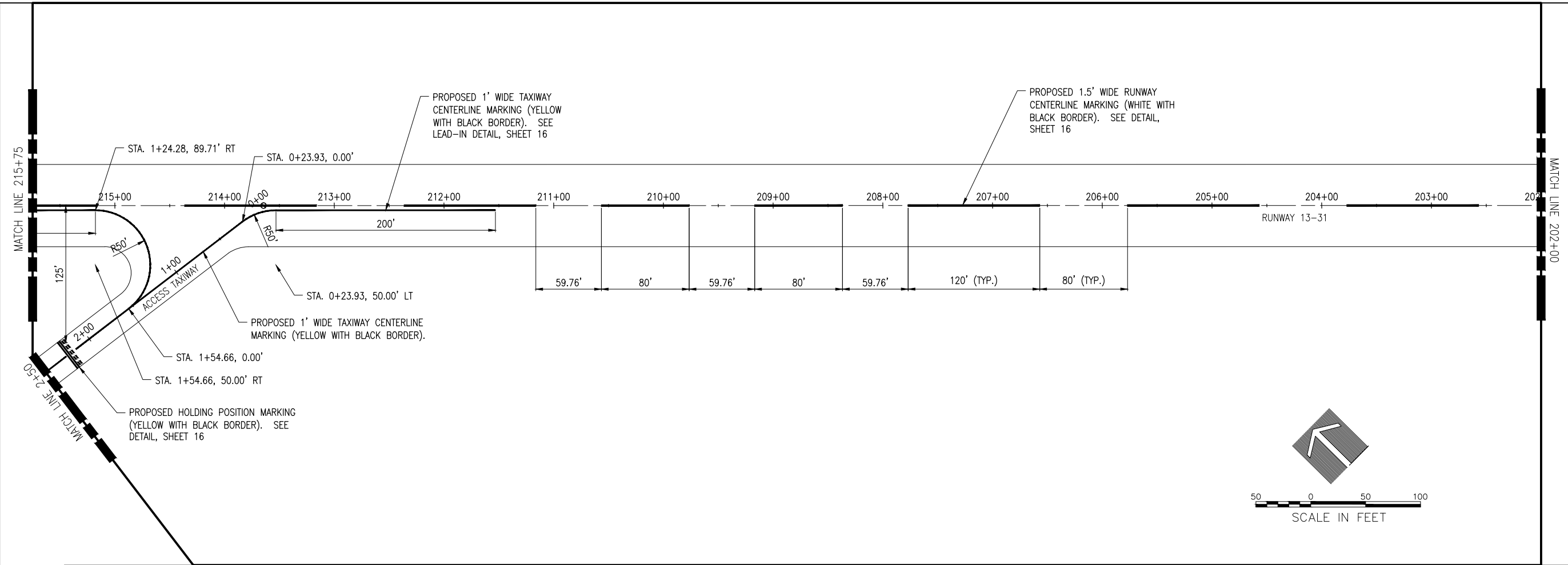
NO.	DATE	DESCRIPTION		
		DES	DWN	REV

ISSUE: JUNE 7, 2019  
PROJECT NO: 19A0010  
CAD FILE: MARKING.DWG  
DESIGN BY: LDH 4/10/19  
DRAWN BY: LDH 4/10/19  
REVIEWED BY: RMH 07/26/19

SHEET TITLE

**MARKING PLAN AND DETAILS RUNWAY 13-31 229+46 - 215+75**





**AIRFIELD PAVEMENT  
MAINTENANCE  
INCLUDING CRACK  
SEALING AND  
RE-MARKING**

SBGP No:  
3-17-SBGP-120/TBD  
IDA No: SFY-4650

Contract No. TR009


NO.	DATE	DESCRIPTION		
		DES	DWN	REV

SHEET TITLE

**MARKING PLAN  
RUNWAY 13-31  
215+75 - 189+47**

**AIRFIELD PAVEMENT MAINTENANCE INCLUDING CRACK SEALING AND RE-MARKING**

SBGP No:  
3-17-SBGp-120/TBD  
IDA No: SFY-4650

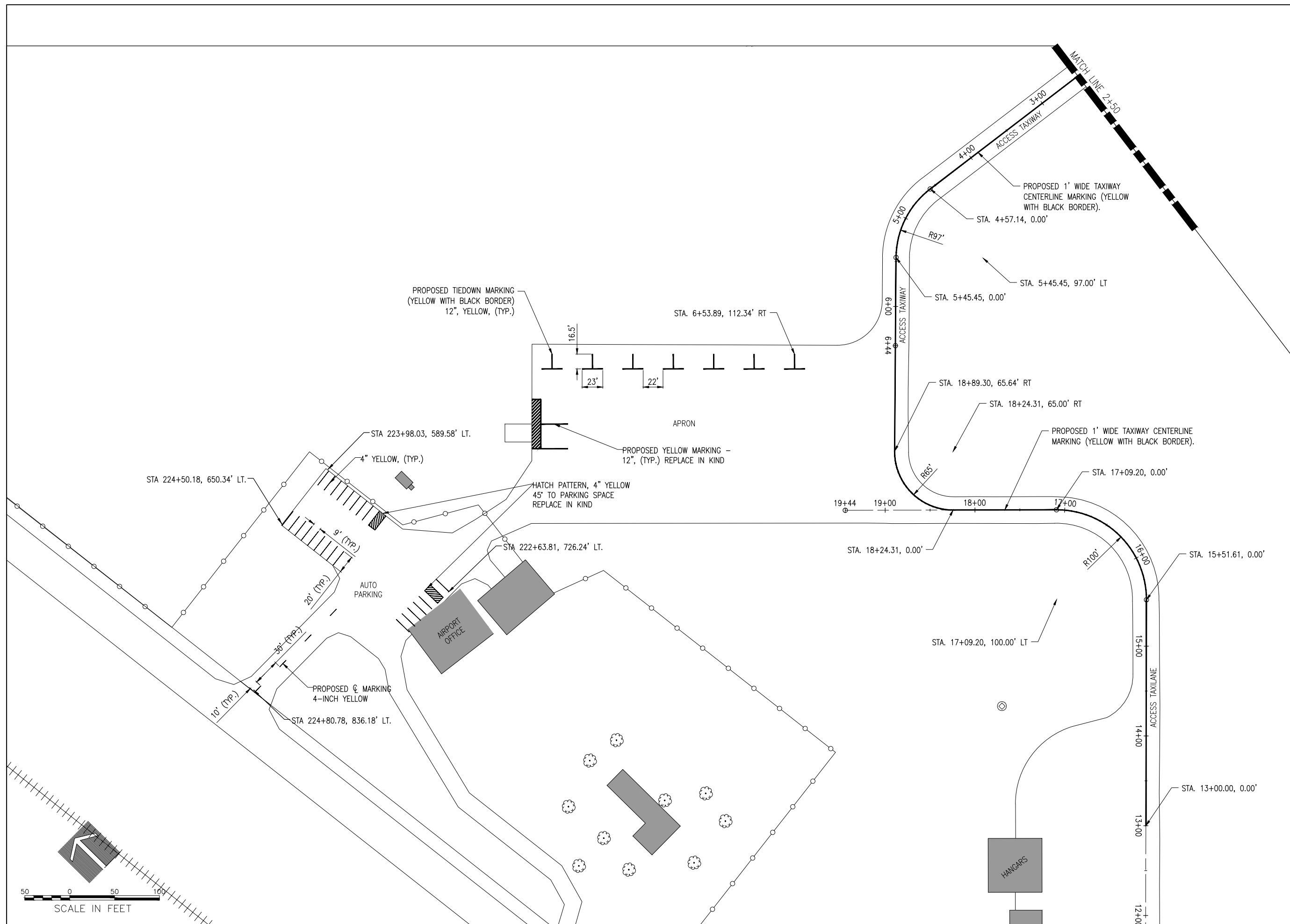
Contract No. TR009

NO.	DATE	DESCRIPTION		
		DES	DWN	REV

ISSUE: JUNE 7, 2019  
PROJECT NO: 19A0010  
CAD FILE: MARKING.DWG  
DESIGN BY: LDH 4/11/19  
DRAWN BY: LDH 4/11/19  
REVIEWED BY: RMH 07/26/19

SHEET TITLE

**MARKING PLAN TAXIWAY & AUTOPARK**



FEB 27, 2020 9:33 AM HALISM00682  
I:\19A0010\19A0010\19A0010\CAD\AIRPORT\ISHEET\MARKING.DWG