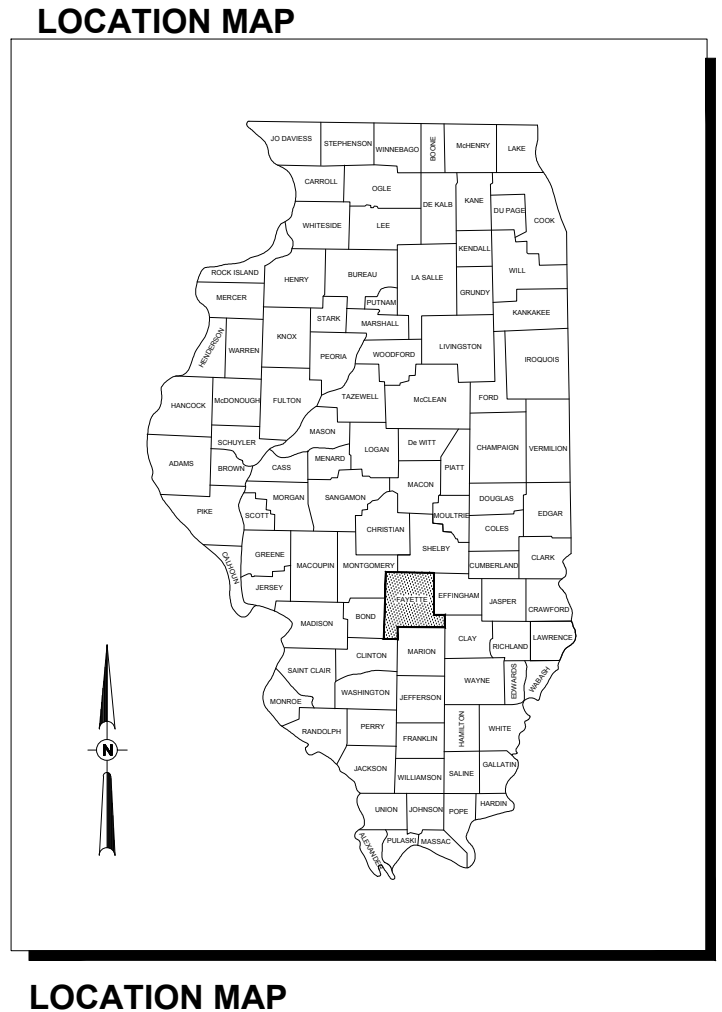
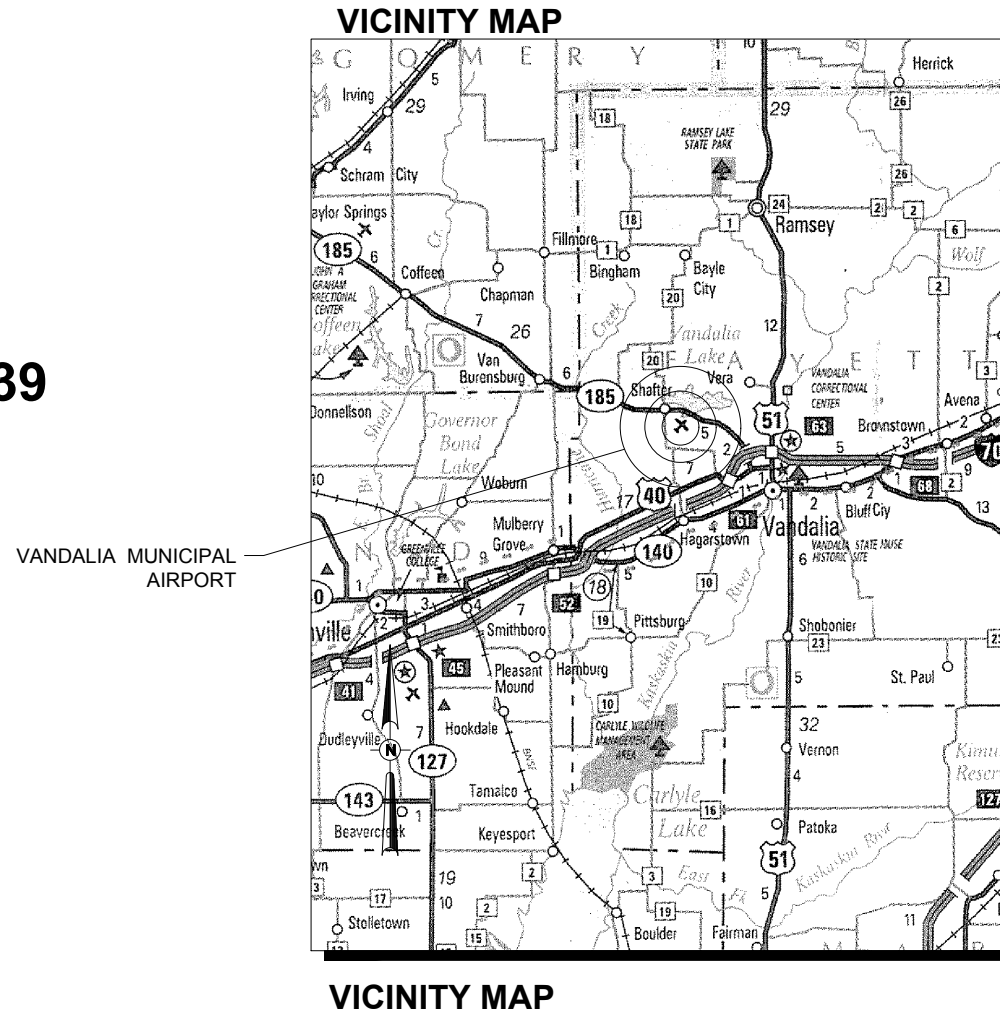


CONSTRUCTION PLANS

**REHABILITATION OF AIRPORT
ENTRANCE ROAD AND PARKING LOT**

**VANDALIA PARK DISTRICT
VANDALIA MUNICIPAL AIRPORT (VLA)
VANDALIA, FAYETTE COUNTY, ILLINOIS**

**IL. PROJECT NO.: VLA-4737
FED. PROJECT NO. : 3-17-SBGP-120/133/139**



NOTICE TO CONTRACTORS AND BIDDERS

THESE CONSTRUCTION PLANS RELY UPON THE SPECIAL PROVISIONS AND THE SPECIFICATIONS TO PROVIDE FOR A COMPLETE DESCRIPTION OF THE WORK AND CONSTRUCTION REQUIREMENTS. THE PLANS SHALL ONLY BE USED IN COMBINATION WITH ALL CONTRACT DOCUMENTS.

E:\19jobs\19A0104\19A0104d\CAD\Airport\Sheet\C-001-COV.dwg

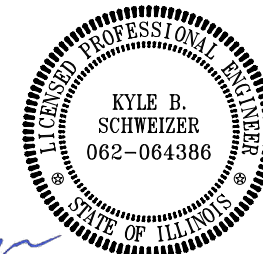
No.	Issue/Description	Sheets Changed	Date	By

PREPARED BY:



HANSON PROFESSIONAL SERVICES INC.
1525 South Sixth Street
Springfield, Illinois 62703-2886
Telephone: 217.788.2450
Fax: 217.788.2503

**DATE OF PLANS:
FEBRUARY 28, 2020**



Kyle B. Schweizer
Kyle Schweizer, P.E.
Project Engineer

Lic. Exp. 11/30/2019

February 28, 2020
Date

VANDALIA PARK DISTRICT
900 North Locust Street
Vandalia, Illinois 62471

Chad Feldpouch
Chad Feldpouch
Airport Manager

February 28, 2020
Date

INDEX TO SHEETS	
SHEET NO.	SHEET TITLE
1	COVER SHEET
2	SUMMARY OF QUANTITIES, INDEX TO SHEETS, AND GENERAL NOTES
3	SCOPE OF WORK AND SAFETY PLAN
4	IDOT TRAFFIC CONTROL STANDARD 701006-05
5	IDOT TRAFFIC CONTROL STANDARD 701326-04
6	TYPICAL SECTIONS AND DETAILS
7	REMOVAL PLAN
8	CONSTRUCTION PLAN
9	PLAN AND PROFILE
10	GRADING AND DRAINAGE PLAN
11	PARKING DETAILS
12	CROSS SECTIONS - SHEET 1
13	CROSS SECTIONS - SHEET 2
14	CROSS SECTIONS - SHEET 3

SUMMARY OF QUANTITIES				
ITEM NO.	DESCRIPTION	UNIT	TOTAL QUANTITY	AS-BUILT QUANTITY
AR150510	ENGINEER'S FIELD OFFICE	L.S.	1	
AR150520	MOBILIZATION	L.S.	1	
AR152410	UNCLASSIFIED EXCAVATION	C.Y.	950	
AR152511	SUBGRADE REPAIR	S.Y.	250	
AR152540	SOIL STABILIZATION FABRIC	S.Y.	2,480	
AR156520	INLET PROTECTION	EACH	4	
AR156530	TEMPORARY SEEDING	ACRE	0.5	
AR156531	EROSION CONTROL BLANKET	S.Y.	1,450	
AR156543	RIPRAP-GRADATION NO. 3	S.Y.	15	
AR209610	CRUSHED AGG. BASE COURSE-10"	S.Y.	2,480	
AR401613	BIT. SURF. CSE.-METHOD I, SUPERPAVE	TON	475	
AR602510	BITUMINOUS PRIME COAT	GAL.	750	
AR603510	BITUMINOUS TACK COAT	GAL.	230	
AR620520	PAVEMENT MARKING-WATERBORNE	S.F.	160	
AR701512	12" RCP, CLASS IV	L.F.	22	
AR701515	15" RCP, CLASS IV	L.F.	58	
AR701713	RCEP SPAN 30 RISE 19	L.F.	54	
AR701900	REMOVE PIPE	L.F.	135	
AR751411	INLET-TYPE A	EACH	1	
AR751412	INLET-TYPE B	EACH	1	
AR751940	ADJUST INLET	EACH	1	
AR752415	PRECAST REINFORCED CONC. FES 15"	EACH	2	
AR752724	PR CONC. FES EQ. ROUND SIZE 24"	EACH	2	
AR901510	SEEDING	ACRE	0.5	
AR910200	ROADWAY SIGN	EACH	2	
AR910410	PARKING BLOCK	EACH	17	

GENERAL NOTES

- THE PROJECT PAY ITEMS ARE INTENDED TO BE INCLUSIVE OF ALL WORK TO BE PERFORMED AS SHOWN IN THESE PLANS. ALL INCIDENTAL WORK REQUIRED TO COMPLETE THE PROJECT TO THE SATISFACTION OF THE RESIDENT ENGINEER IS TO BE INCLUDED IN THE COSTS OF PERFORMING THESE ITEMS. THE CONTRACTOR SHALL FURNISH ALL LABOR, MATERIAL, EQUIPMENT, AND TRANSPORTATION NECESSARY TO CONSTRUCT ALL ELEMENTS OF THE PROJECT AS DESCRIBED IN THE CONSTRUCTION PLANS AND SPECIFICATIONS.
- THE RULES, REGULATIONS, AND SPECIFICATIONS ENUMERATED HEREIN SHALL BE CONSIDERED AS MINIMUM REQUIREMENTS. THEY SHALL NOT PROHIBIT THE CONTRACTOR FROM FURNISHING AND INSTALLING HIGHER GRADES OF MATERIAL THAN ARE SPECIFIED HEREIN, IF APPROVED BY THE ENGINEER.
- ACCESS TO THE SITE SHALL BE RESTRICTED EXCLUSIVELY TO THE DESIGNATED CONSTRUCTION ENTRANCE, STAGING AREA, AND HAUL ROUTE. NO EQUIPMENT OR PERSONNEL SHALL BE PERMITTED OUTSIDE THE GENERAL PROJECT AREA.
- IT SHALL BE THE RESPONSIBILITY OF THE CONTRACTOR TO PROTECT AND KEEP CLEAN OF DEBRIS ALL EXISTING AIRFIELD AND ROADWAY PAVEMENTS AT ALL TIMES. ANY DAMAGE TO EXISTING ELECTRICAL, DRAINAGE, AND PAVEMENT STRUCTURES SHALL BE IMMEDIATELY REPAIRED AT NO ADDITIONAL COST TO THE CONTRACT.
- CONTRACTOR IS REQUIRED TO PROVIDE THEIR OWN RESTROOM FACILITIES.
- THE LOCATION OF THE ENGINEER'S FIELD OFFICE WILL BE DETERMINED AT THE PRE-CONSTRUCTION MEETING.
- THE OWNER SHALL HAVE THE RIGHT OF FIRST REFUSAL FOR ALL SALVAGEABLE MATERIAL REMOVED ON THE PROJECT UNLESS OTHERWISE NOTED.
- THE CONTRACTOR SHALL BE RESPONSIBLE FOR OBTAINING PERMITS FOR HAULING ON PUBLIC ROADS, AS APPLICABLE. THE CONTRACTOR SHALL BE RESPONSIBLE FOR CORRECTING ANY DAMAGES TO ANY PAVEMENTS (PUBLIC OR PRIVATE) CAUSED BY HIS/HER CONSTRUCTION EQUIPMENT OR PERSONNEL.
- THE CONTRACTOR SHALL PROVIDE ONE SET OF PRELIMINARY REDLINED RECORD DRAWINGS TO THE RESIDENT ENGINEER AT THE COMPLETION OF THE PROJECT FOR INCORPORATION INTO THE OFFICIAL RECORD DRAWINGS HE WILL PREPARE.
- APPROXIMATE LOCATIONS OF UNDERGROUND UTILITIES ARE SHOWN THROUGHOUT THESE PLANS. THE CONTRACTOR SHALL DETERMINE EXACT LOCATIONS AND PROTECT THESE UTILITIES DURING CONSTRUCTION. ANY UTILITIES DAMAGED DURING CONSTRUCTION SHALL BE REPAIRED AT THE CONTRACTOR'S EXPENSE. CONTRACTOR SHALL COORDINATE WITH THE PROPER AUTHORITIES FOR THE PURPOSE OF LOCATING AND PROTECTING EXISTING UNDERGROUND UTILITIES.
- NPDES PERMIT - THIS PROJECT WILL NOT DISTURB MORE THAN 1 ACRE, THEREFORE A NPDES PERMIT NOT IS REQUIRED.
- MATERIAL CERTIFICATIONS - MATERIALS CANNOT BE INSTALLED UNTIL ALL THE MATERIAL CERTIFICATIONS FOR THAT ITEM HAVE BEEN RECEIVED, REVIEWED AND ACCEPTED BY THE RESIDENT ENGINEER. MATERIALS INSTALLED WITHOUT APPROVAL ARE SUBJECT TO REMOVAL AND REPLACEMENT AT THE CONTRACTOR'S EXPENSE.
- CERTIFIED PAYROLLS - THE RESIDENT ENGINEER CANNOT FORWARD A CONSTRUCTION REPORT FOR PAYMENT TO THE IDOT-DIVISION OF AERONAUTICS FOR PROCESSING UNTIL ALL CERTIFIED PAYROLLS FOR THAT PERIOD HAVE BEEN RECEIVED.

UTILITY NOTE

THE LOCATION, SIZE, AND TYPE OF MATERIAL OF EXISTING UNDERGROUND AND/OR ABOVEGROUND UTILITIES INDICATED ON THE PLANS ARE NOT REPRESENTED AS BEING ACCURATE, SUFFICIENT OR COMPLETE. NEITHER THE OWNER NOR THE ENGINEER ASSUMES ANY RESPONSIBILITY WHATEVER IN RESPECT TO THE ACCURACY, COMPLETENESS, OR SUFFICIENCY OF THE INFORMATION. THERE IS NO GUARANTEE, EITHER EXPRESSED OR IMPLIED, THAT THE LOCATIONS, SIZE AND TYPE OF MATERIAL OF EXISTING UNDERGROUND UTILITIES INDICATED ARE REPRESENTATIVE OF THOSE TO BE ENCOUNTERED IN THE CONSTRUCTION. IT SHALL BE THE CONTRACTOR'S RESPONSIBILITY TO DETERMINE THE ACTUAL LOCATION OF ALL SUCH FACILITIES, INCLUDING SERVICE CONNECTIONS TO UNDERGROUND UTILITIES. PRIOR TO CONSTRUCTION, THE CONTRACTOR SHALL NOTIFY THE UTILITY COMPANIES OF HIS OPERATIONAL PLANS AND SHALL OBTAIN FROM THE RESPECTIVE UTILITY COMPANIES DETAILED INFORMATION AND ASSISTANCE RELATIVE TO THE LOCATION OF THEIR FACILITIES AND THE WORKING SCHEDULE OF THE COMPANIES FOR REMOVAL OR ADJUSTMENT WHERE REQUIRED. IN THE EVENT AN UNEXPECTED UTILITY INTERFERENCE IS ENCOUNTERED DURING CONSTRUCTION, THE CONTRACTOR SHALL IMMEDIATELY NOTIFY THE UTILITY COMPANY OF JURISDICTION. THE OWNER'S REPRESENTATIVE AND/OR THE RESIDENT ENGINEER SHALL ALSO BE IMMEDIATELY NOTIFIED. ANY DAMAGE TO SUCH MAINS AND SERVICES SHALL BE RESTORED TO SERVICE AT ONCE AND PAID FOR BY THE CONTRACTOR AT NO ADDITIONAL COST TO THE CONTRACT. ALL UTILITY CABLES AND LINES SHALL BE LOCATED BY THE RESPECTIVE UTILITY. CONTACT JULIE (JOINT UTILITY LOCATION INFORMATION FOR EXCAVATORS) FOR UTILITY INFORMATION, PHONE: 1-800-892-0123. CONTACT THE FAA (FEDERAL AVIATION ADMINISTRATION) FOR ASSISTANCE IN LOCATING FAA CABLES AND UTILITIES. LOCATION OF FAA POWER, CONTROL, AND COMMUNICATION CABLES SHALL BE COORDINATED WITH AND/OR LOCATED BY THE FAA. ALSO CONTACT AIRPORT DIRECTOR/MANAGER AND AIRPORT PERSONNEL FOR ASSISTANCE IN LOCATING UNDERGROUND AIRPORT CABLES AND/OR UTILITIES. ALSO COORDINATE WORK WITH ALL ABOVEGROUND UTILITIES.

J.U.L.I.E. INFORMATION

COUNTY _____ FAYETTE
CITY _____ VANDALIA
TOWNSHIP _____ BEAR GROVE
SECTION NO. _____ 2
ADDRESS _____ VANDALIA MUNICIPAL AIRPORT
457 E. 1700 AVE.
VANDALIA, ILLINOIS 62471

REHABILITATION OF AIRPORT ENTRANCE ROAD AND PARKING LOT

IDA No: VLA-4737
SBG No:
3-17-SBGP-120/133/139

Contract No: VA021

NO.	DATE	DESCRIPTION		
		DES	DWN	REV

ISSUE: 02/28/2020 (FOR BID)

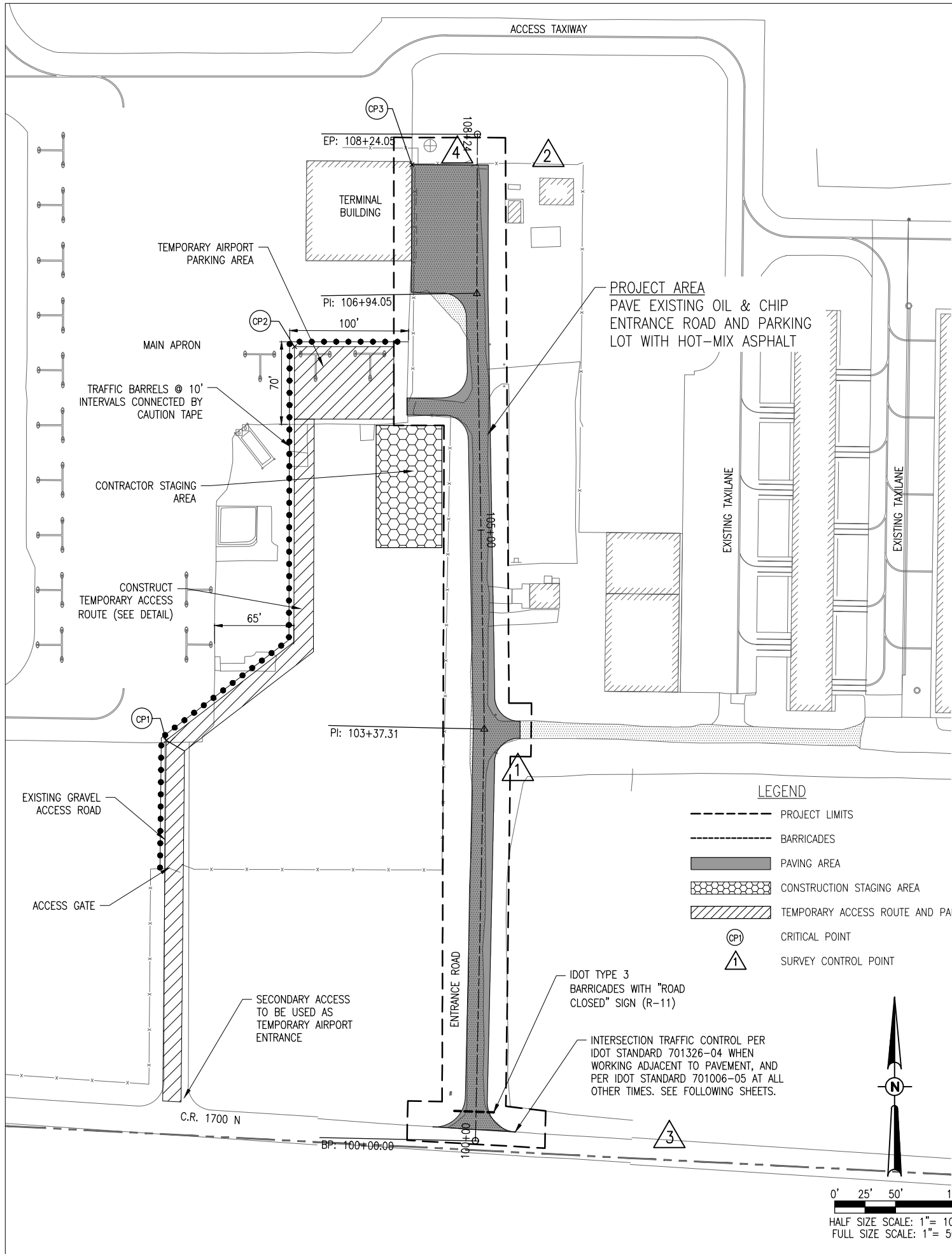
PROJECT NO: 19A0104
CAD FILE: C-002-SOQ.DWG
DESIGN BY: KBS 1/15/2020
DRAWN BY: HLE 1/15/2020
REVIEWED BY: KBS

SHEET TITLE

SUMMARY OF QUANTITIES, INDEX TO SHEETS, AND GENERAL NOTES

CONSTRUCTION SAFETY PLAN AND NOTES

- CONSTRUCTION SAFETY PLAN** - THE VANDALIA MUNICIPAL AIRPORT IS COMPRISED OF TWO PAVED RUNWAYS. THE PROPOSED T-HANGAR PAVING PROJECT WILL NOT REQUIRE RUNWAY CLOSURE. HOWEVER A PORTION OF THE MAIN RAMP AREA WILL BE CLOSED TO PROVIDE TEMPORARY PARKING AND ACCESS TO AIRPORT USERS DURING CONSTRUCTION. THE ENTRANCE ROAD WILL BE CLOSED FOR THE DURATION OF THE PROJECT.
- ALL PROVISIONS OF FAA ADVISORY CIRCULAR AC 150/5370-2 (CURRENT EDITION), "OPERATIONAL SAFETY ON AIRPORTS DURING CONSTRUCTION" APPLY TO THIS CONTRACT, EXCEPT AS MODIFIED BY THIS SAFETY PLAN, BY THE AIRPORT MANAGER, OR THROUGH THE RESIDENT ENGINEER/TECHNICIAN AT THE PRECONSTRUCTION CONFERENCE OR DURING THE COURSE OF THE CONTRACT.
- ALL COSTS ASSOCIATED WITH THE WORK AND MATERIALS INVOLVING CONSTRUCTION SAFETY & PHASING AS SHOWN OR DESCRIBED IN THE CONTRACT DOCUMENTS, OR AS OTHERWISE DIRECTED BY THE RESIDENT ENGINEER/TECHNICIAN OR AIRPORT MANAGER THROUGHOUT THE PROJECT, SHALL BE INCIDENTAL TO THE CONSTRUCTION CONTRACT.
- AIRFIELD SAFETY ASSURANCE** - AIRFIELD SAFETY SHALL BE HELD PARAMOUNT AT ALL TIMES. ANY INDIVIDUALS RESPONSIBLE FOR INCURSIONS OR POTENTIAL INCURSIONS WITH AIR TRAFFIC DUE TO NON-COMPLIANCE WITH REQUIREMENTS SET FOR IN THESE PLANS, SPECIFICATIONS, SPECIAL PROVISIONS, AND FAA ADVISORY CIRCULAR 150/5370-2F WILL BE SUBJECT TO AN IMMEDIATE SUSPENSION OF DRIVING PRIVILEGES ON THE AIRPORT OR A COMPLETE RESTRICTION FROM ENTERING THE AIR OPERATIONS AREA ALTOGETHER. THE AIRPORT MANAGER OR RESIDENT ENGINEER/TECHNICIAN MAY STOP THE WORK AT ANY TIME THEY BELIEVE AIRFIELD SAFETY IS BEING COMPROMISED.
- ALL CONSTRUCTION EQUIPMENT OPERATING IN THE PRESCRIBED CONSTRUCTION AREA IS REQUIRED TO DISPLAY A CHECKERBOARD FLAG PROPERLY LOCATED OR A ROTATING BEACON (STROBE) AS SPECIFIED IN AC 150/5210-5, "PAINTING, MARKING, AND LIGHTING OF VEHICLES USED ON AN AIRPORT" (CURRENT EDITION).
- THE MAXIMUM ANTICIPATED HEIGHT OF THE CONSTRUCTION EQUIPMENT IS 25 FEET OR AS SHOWN FOR A PARTICULAR LOCATION. EQUIPMENT WITH HEIGHTS GREATER THAN THAT SHOWN WILL NOT BE ALLOWED ONSITE UNLESS ADDITIONAL AIR SPACE APPROVAL IS ACQUIRED.
- CLOSED AIRFIELD PHASING AREAS, OPEN TRENCHES, AND OTHER HAZARDOUS AREAS AT THE CONSTRUCTION SITE SHALL BE PROMINENTLY MARKED WITH LIGHTED BARRICADES WITH STEADY BURNING OR FLASHING RED LIGHTS AS SPECIFIED IN 150/5370-2, "OPERATIONAL SAFETY ON AIRPORT DURING CONSTRUCTION", LATEST EDITION. LIGHTED BARRICADES MUST BE NO TALLER THAN 18" (EXCLUSIVE OF SUPPLEMENTARY LIGHTS AND FLAGS) ON THE TAXIWAYS. CONTRACTOR SHALL NIGHT CHECK BARRICADES DAILY FOR PROPER OPERATION.
- NO PAVEMENT EDGE DROP-OFFS GREATER THAN 3" ARE ALLOWED TO REMAIN ON ANY ACTIVE AIRFIELD PAVEMENT AREA. TEMPORARY EARTH OR SHOULDERS SHALL BE PLACED IF AN INCOMPLETE AREA IS TO BE REOPENED TO AIRCRAFT TRAFFIC.
- SOIL, DEBRIS, AND LOOSE MATERIAL DROPPED OR TRUCKED ONTO AIRPORT ROADS, TAXIWAYS, AND SOD SURFACES, OR WHICH CAN BE BLOWN ONTO SUCH SURFACES, SHALL BE IMMEDIATELY SWEEPED, PICKED UP AND REMOVED, OR PLACED INTO CLOSED CONTAINERS. ANY DAMAGE TO AIRPORT PROPERTY SHALL BE REPAIRED IMMEDIATELY AT NO COST TO THE OWNER.
- EACH CONTRACTOR SHALL BE RESPONSIBLE FOR LOCATING AND MAINTAINING AIRPORT LIGHTING AND NAVIGATIONAL ELECTRICAL SYSTEMS DURING CONSTRUCTION. A CONTACT PERSON AND TELEPHONE NUMBER FOR 24 HOUR EMERGENCY IMMEDIATE REPAIR SHALL BE SUBMITTED TO THE AIRPORT MANAGER AND ENGINEER. HAUL ROUTES CROSSING PAVEMENT, DRAINAGE, MISCELLANEOUS STRUCTURES AND/OR AIRFIELD CABLES SHALL BE PROTECTED FROM DAMAGE.
- ALL AIRCRAFT AND AIRPORT OPERATIONS HAVE THE RIGHT-OF-WAY. CONTRACTOR TO YIELD TO VEHICLES AND REMAIN CLEAR AT ALL TIMES.
- THE CONTRACTOR SHALL UTILIZE WATER AND/OR CHEMICALS APPROVED BY THE RESIDENT ENGINEER AS NECESSARY TO CONTROL DUST.
- RADIO CONTROL** - THE CONTRACTOR WILL BE REQUIRED TO PROVIDE AN AIRBAND RADIO AND MAINTAIN TWO-WAY RADIO CONTACT WITH THE VANDALIA MUNICIPAL AIRPORT UNICOM (122.8 MHz) WHILE HE HAS PERSONNEL OR EQUIPMENT ON THE AIRFIELD.



SURVEY CONTROL POINTS				
NO.	DESCRIPTION	NORTHING	EASTING	ELEV.
1	5/8" REBAR	846,373.73	747,929.26	
2	5/8" REBAR	845,867.59	748,319.51	
3	NGS "Y 256" DISK IN CULVERT HEADWALL	845,571	748,030	531.89
4	CHISELED SQUARE	846,376	747,855	532.61

CRITICAL POINTS					
POINT #	DESCRIPTION	LATITUDE	LONGITUDE	GRND. ELEV. (MSL)	HEIGHT (AGL)
1	EQUIPMENT	N038° 59' 12.12"	W089° 09' 56.94"	531.0	25'
2	EQUIPMENT	N038° 59' 15.29"	W089° 09' 56.26"	532.0	25'
3	EQUIPMENT	N038° 59' 16.77"	W089° 09' 54.42"	533.0	25'

ENTRANCE ROAD AND PARKING LOT ALIGNMENT DATA		
STATION	NORTHING	EASTING
100+00	845,567.44	747,870.09
103+37.31	845,904.67	747,877.40
106+94.05	846,261.36	747,871.32
108+24.05	846,391.36	747,871.76

SURVEY NOTES

- ALL COORDINATE VALUES SHOWN IN TABLE ARE BASED ON ILLINOIS STATE PLANE COORDINATE SYSTEM, EAST ZONE, NAD-83 (2011). ALL ELEVATIONS ARE REFERENCED TO NAVD 88.
- THE CONTRACTOR SHALL BE RESPONSIBLE FOR ALL CONSTRUCTION LAYOUT AND ANY EXTENSION OF THE CONTROL NETWORK NEEDED TO PROPERLY COMPLETE THE WORK.

NOTES:

- TEMPORARY ACCESS ROUTE TO BE REMOVED AND RESTORED TO ORIGINAL CONDITION AT COMPLETION OF PROJECT.
- RESIDENT ENGINEER/TECHNICIAN WILL CONFIRM TEMPORARY ACCESS ROUTE LIMITS/LOCATION PRIOR TO INSTALLATION.
- ALL WORK AND MATERIALS INVOLVING TEMPORARY ACCESS ROUTE SHALL BE INCLUDED UNDER PAY ITEM AR150520 "MOBILIZATION" - PER LUMP SUM.

REHABILITATION OF AIRPORT ENTRANCE ROAD AND PARKING LOT

IDA No: VLA-4737
SBG No:
3-17-SBGP-120/133/139

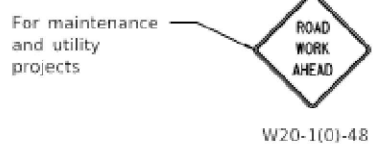
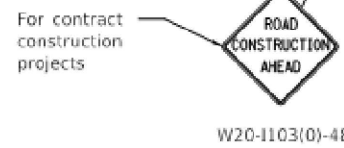
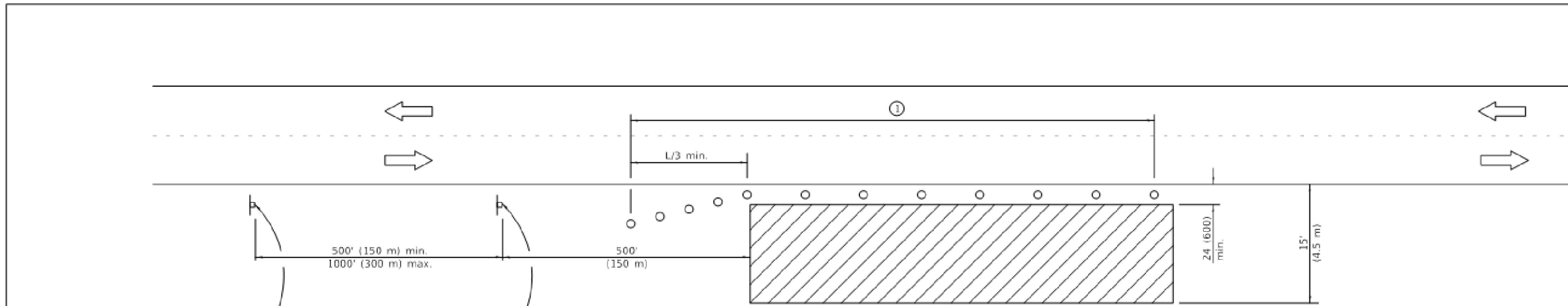
Contract No: VA021

NO.	DATE	DESCRIPTION		
		DES	DWN	REV

ISSUE: 02/28/2020 (FOR BID)
PROJECT NO: 19A0104
CAD FILE: C-004-SFY.DWG
DESIGN BY: KBS 1/15/2020
DRAWN BY: HLE 1/15/2020
REVIEWED BY: KBS 2/27/2020

SHEET TITLE

SCOPE OF WORK AND SAFETY PLAN



TYPICAL APPLICATIONS

- Utility operations
- Culvert extensions
- Side slope changes
- Guardrail installation and maintenance
- Delineator installation
- Landscaping operations
- Shoulder repair
- Sign installation and maintenance

SYMBOLS

- Work area
- Sign
- Cone, drum or barricade

① When the work operation exceeds one hour, cones, drums or barricades shall be placed at 25' (8 m) centers for L/3 distance, and at 50' (15 m) centers through the remainder of the work area.

GENERAL NOTES

This Standard is used where any vehicles, equipment, workers or their activities will encroach in the area 15' (4.5 m) to 24' (600) from the edge of pavement.

Calculate L as follows:

SPEED LIMIT	FORMULAS	
	English	(Metric)
40 mph (70 km/h) or less:	$L = \frac{WS^2}{60}$	$L = \frac{WS^2}{150}$
45 mph (80 km/h) or greater:	$L = (W)(S)$	$L = 0.65(W)(S)$

W = Width of offset in feet (meters).

S = Normal posted speed mph (km/h).

All dimensions are in inches (millimeters) unless otherwise shown.

DATE	REVISIONS
1-1-14	Revised workers sign number to agree with current MUTCD.
1-1-13	Omitted text 'WORKERS' sign.

OFF-RD OPERATIONS, 2L, 2W, 15' (4.5 m) TO 24" (600 mm) FROM PAVEMENT EDGE

STANDARD 701006-05

REHABILITATION OF AIRPORT ENTRANCE ROAD AND PARKING LOT

IDA No: VLA-4737
SBG No: 3-17-SBGP-120/133/139

Contract No: VA021

NO.	DATE	DESCRIPTION		
		DES	DWN	REV

ISSUE: 02/28/2020 (FOR BID)
PROJECT NO: 19A0104
CAD FILE: C-004-SFY.DWG
DESIGN BY: KBS 1/15/2020
DRAWN BY: HLE 1/15/2020
REVIEWED BY: KBS

SHEET TITLE

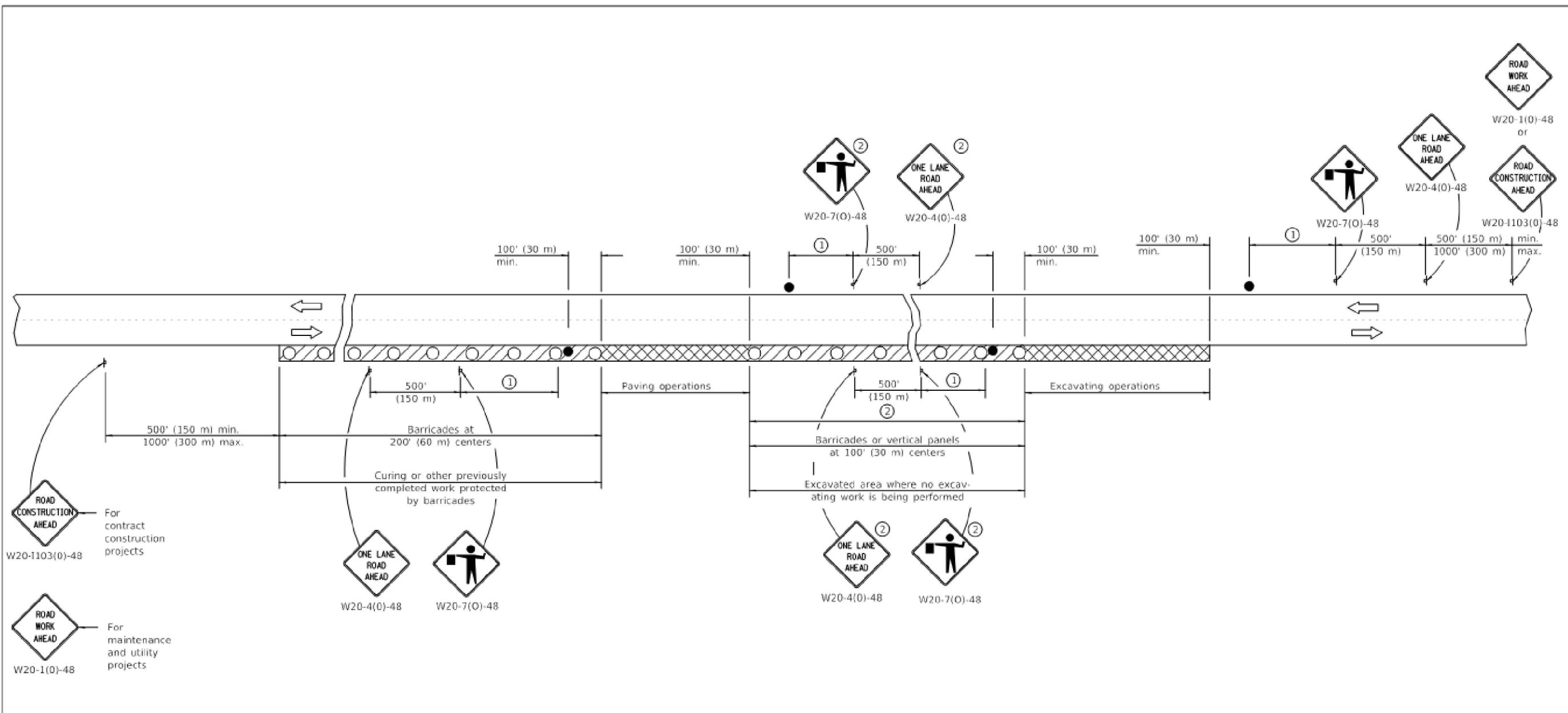
IDOT TRAFFIC CONTROL STANDARD 701006-05

Illinois Department of Transportation

PASSED January 2014
ENGINEER OF SAFETY ENGINEERING

APPROVED February 1, 2014
ENGINEER OF DESIGN AND ENVIRONMENT

ISSUED 3-1-97



ROAD CONSTRUCTION AHEAD
W20-1103(0)-48
For contract construction projects

ROAD WORK AHEAD
W20-1(0)-48
For maintenance and utility projects

SYMBOLS

- Work area
- Active Work area
- Sign
- Barricade, drum, or vertical panels
- Flagger with traffic control sign

- ① Minimum distance is 200' (60 m). Maximum distance to be determined by the Engineer but in no case to exceed the length of 1/2 day's normal operation or 2 miles (3200 m) whichever is less.
- ② Signs are not required if distance between work operations is less than 2000' (600 m) unless restricted sight distance exists.

GENERAL NOTES

This Standard is used where at any time, any vehicle, equipment, workers or their activities will encroach on the pavement during widening operations.

Two flaggers are required for each separate operation.

All dimensions are in inches (millimeters) unless otherwise shown.

DATE	REVISIONS
1-1-11	Revised flagger sign.
1-1-09	Switched units to English (metric). Corrected sign No.'s.

**LANE CLOSURE, 2L, 2W,
PAVEMENT WIDENING,
FOR SPEEDS ≥ 45 MPH**

STANDARD 701326-04

Illinois Department of Transportation

PASSED January 3, 2011
ENGINEER OF SAFETY ENGINEERING

APPROVED January 3, 2011
ENGINEER OF DESIGN AND ENVIRONMENT

ISSUED 1-1-11

REHABILITATION OF AIRPORT ENTRANCE ROAD AND PARKING LOT

IDA No: VLA-4737
SBG No: 3-17-SBGP-120/133/139

Contract No: VA021

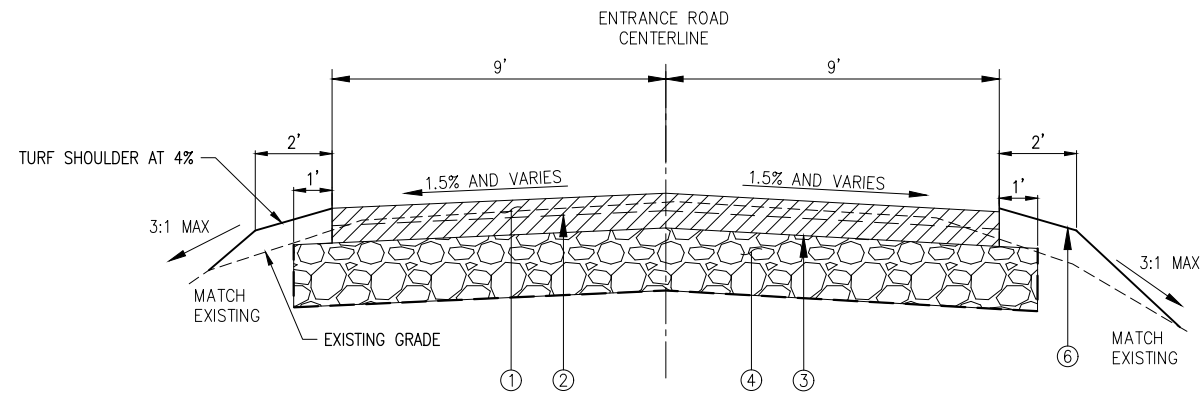
NO.	DATE	DESCRIPTION		
		DES	DWN	REV

ISSUE: 02/28/2020 (FOR BID)

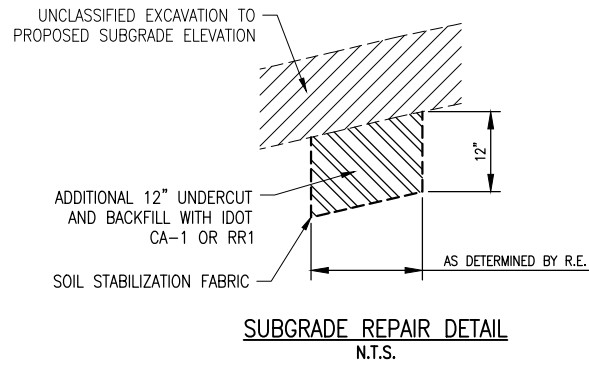
PROJECT NO: 19A0104
CAD FILE: C-004-SFY.DWG
DESIGN BY: KBS 1/15/2020
DRAWN BY: HLE 1/15/2020
REVIEWED BY: KBS

SHEET TITLE

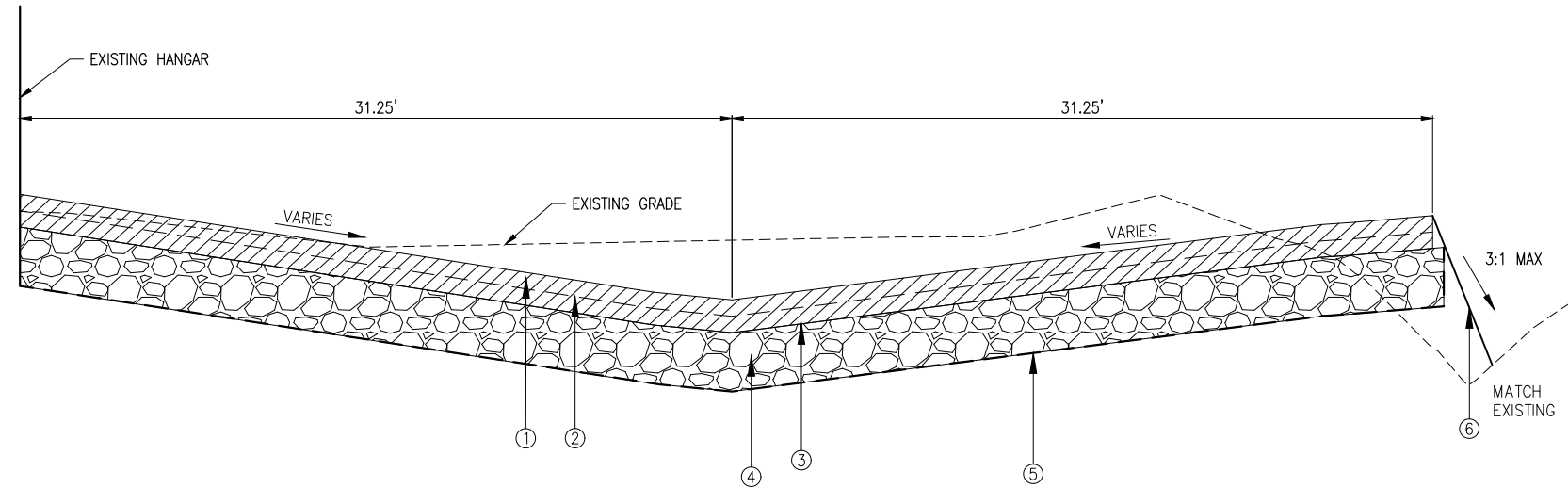
IDOT TRAFFIC CONTROL STANDARD 701326-04



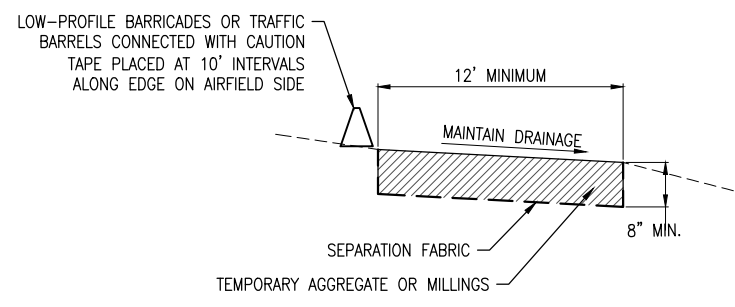
TYPICAL SECTION "A-A" - ENTRANCE ROAD
NOT TO SCALE



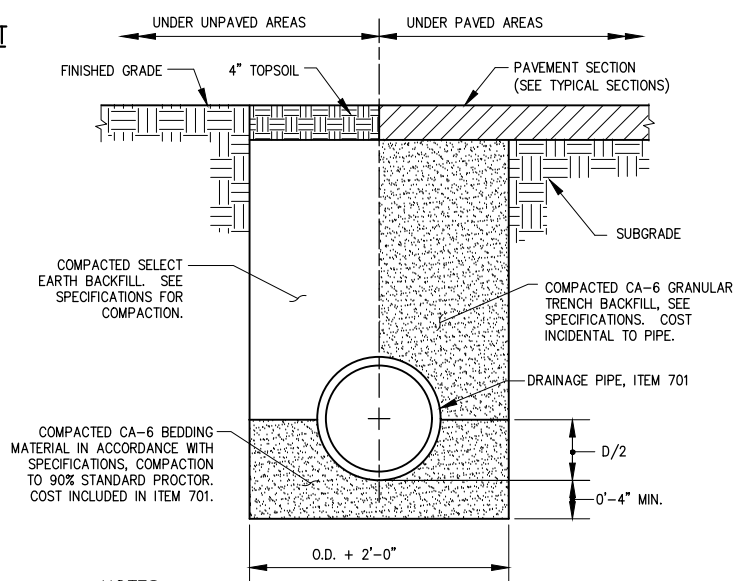
SUBGRADE REPAIR DETAIL
N.T.S.



TYPICAL SECTION "B-B" - PARKING LOT



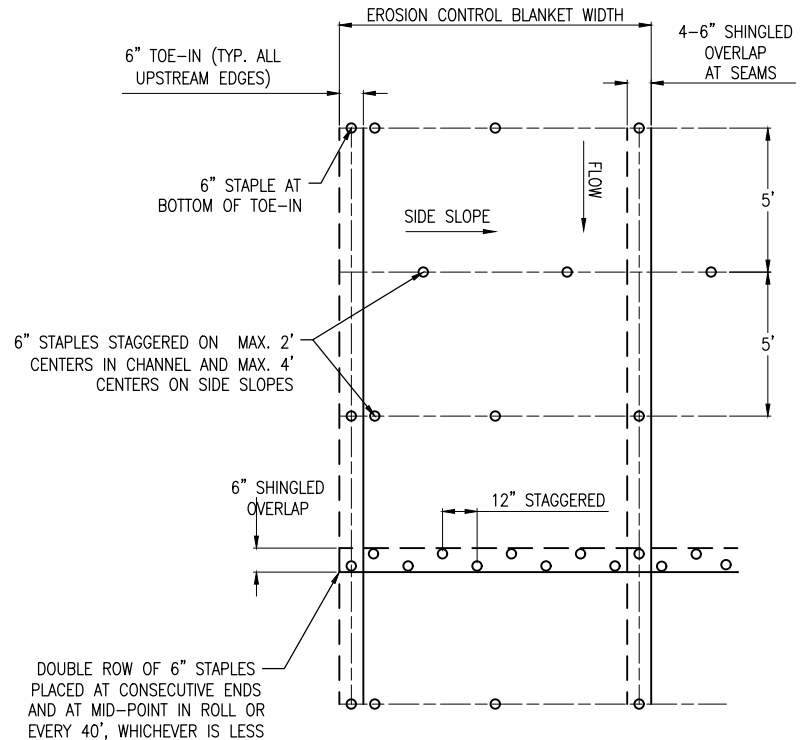
TEMPORARY ACCESS ROUTE DETAIL
N.T.S.



NOTES

- UNDESIRABLE MATERIAL ENCOUNTERED DURING PLACEMENT OF BEDDING SHALL BE REMOVED AND REPLACED.
- WITHIN 3 FEET OF PAVED AREA, GRANULAR BACKFILL IS TO BE USED INSTEAD OF EARTH BACKFILL.
- AT CONTRACTOR'S OPTION IDOT CONTROLLED LOW STRENGTH MATERIAL WITH A HIGH EARLY STRENGTH, "FLASH FILL", MAY BE USED INSTEAD OF GRANULAR TRENCH BACKFILL UNDER PAVEMENTS.

PIPE TRENCH
N.T.S.



EROSION CONTROL BLANKET DETAIL
NOT TO SCALE

LEGEND FOR TYPICAL SECTIONS A-A AND B-B

- PROPOSED 3.5 INCH BITUMINOUS SURFACE COURSE, PLACED IN TWO LIFTS (ITEM 401)
- PROPOSED BITUMINOUS TACK COAT (ITEM 603)
- PROPOSED BITUMINOUS PRIME COAT (ITEM 602)
- PROPOSED 10.0 INCH CRUSHED AGGREGATE BASE COURSE (ITEM 209)
- PROPOSED SOIL STABILIZATION FABRIC (ITEM 152460)
- PROPOSED SEEDING (ITEM 901) & EROSION CONTROL BLANKET (ITEM 156531)

HOT-MIX ASPHALT MIXTURE REQUIREMENTS

ITEM	MIXTURE TYPE	AIR VOIDS (%) @ Ndes
ITEM 401 BIT. SURF. CSE.-METHOD I, SUPERPAVE	POLYMERIZED HMA SURFACE COURSE, MIX "C", N50 (IL 9.5 MM), - 3.5" (2 LIFTS)	4% @ 30 GYR

- THE UNIT WEIGHT USED TO CALCULATE ALL HMA SURFACE QUANTITIES IS 112 LBS/SQ YD/IN. (0.056 TONS/SQ YD/IN.)
- THE "AC TYPE" FOR POLYMERIZED HMA MIXES SHALL BE "SBS/SBR PG 76-22" AND "PG 64-22" FOR NON POLYMERIZED HMA.
- SECTION 406 OF THE "STANDARD SPECIFICATIONS FOR ROAD AND BRIDGE CONSTRUCTION," ADOPTED APRIL 1, 2016 SHALL GOVERN ALL MATERIAL REQUIREMENTS FOR THIS ITEM.

REHABILITATION OF AIRPORT ENTRANCE ROAD AND PARKING LOT

IDA No: VLA-4737
SBG No:
3-17-SBGP-120/133/139

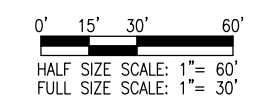
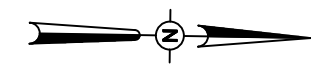
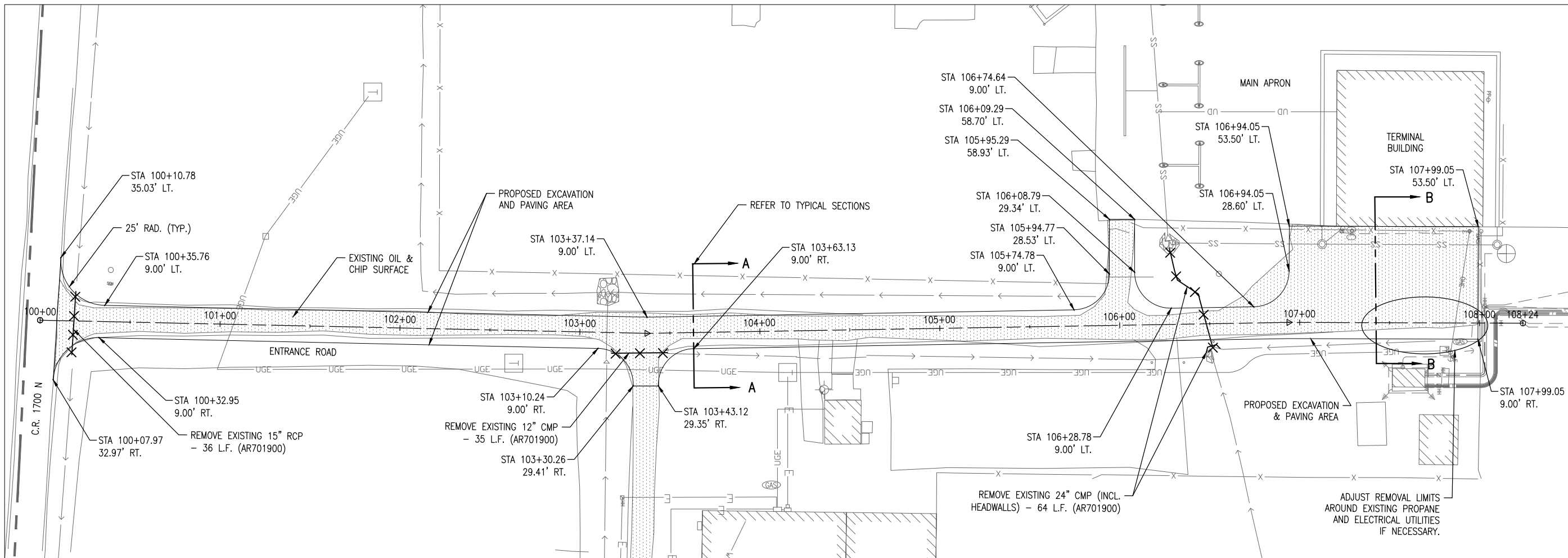
Contract No: VA021

NO.	DATE	DESCRIPTION		
		DES	DWN	REV

ISSUE: 02/28/2020 (FOR BID)
PROJECT NO: 19A0104
CAD FILE: C-501-TYP.DWG
DESIGN BY: JAP
DRAWN BY: JAP
REVIEWED BY: KBS 2/27/2020

SHEET TITLE

TYPICAL SECTIONS AND DETAILS



REMOVAL NOTES

1. LIMITS SHOWN DEPICT PROPOSED EDGE OF PAVEMENT, HOWEVER AGGREGATE BASE COURSE LIMITS EXTEND ONE FOOT PAST EACH SIDE OF PAVEMENT EDGE. REFER TO TYPICAL SECTIONS FOR DETAIL.
2. THE AR152410 "UNCLASSIFIED EXCAVATION" PAY ITEM SHALL INCLUDE REMOVAL OF ALL MATERIALS DOWN TO PROPOSED SUBGRADE ELEVATION WITHIN THE LIMITS SHOWN, INCLUDING OIL & CHIP, AGGREGATE, MILLINGS, PATCHES, OR ANY OTHER MATERIALS. REMOVAL OF PARKING BLOCKS, TEMPORARY RELOCATION OF ONSITE DUMPSTER AND OTHER ITEMS SHALL BE INCIDENTAL.
3. EARTHWORK SUMMARY:
CUT - 950 CUBIC YARDS
FILL - 70 CUBIC YARDS
4. ALL EXCAVATED MATERIAL SHALL BE HAULED OFF AND DISPOSED OF OFFSITE. TOPSOIL MATERIAL SHALL BE REUSED IN THE TURF SHOULDERS.
5. SAWCUTS SHALL BE MADE PRIOR TO REMOVAL ALONG EXISTING PAVEMENT EDGES TO REMAIN.
6. A NOMINAL QUANTITY OF "SUBGRADE REPAIR" PAY ITEM HAS BEEN INCLUDED FOR USE IN UNDERCUTTING ANY SOFT AREAS ENCOUNTERED DURING EXCAVATION. QUANTITY WILL BE USED AT THE DISCRETION OF THE RESIDENT ENGINEER.

REHABILITATION OF AIRPORT ENTRANCE ROAD AND PARKING LOT

IDA No: VLA-4737
SBG No:
3-17-SBGP-120/133/139

Contract No: VA021

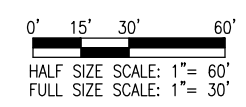
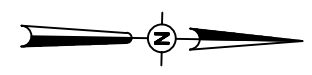
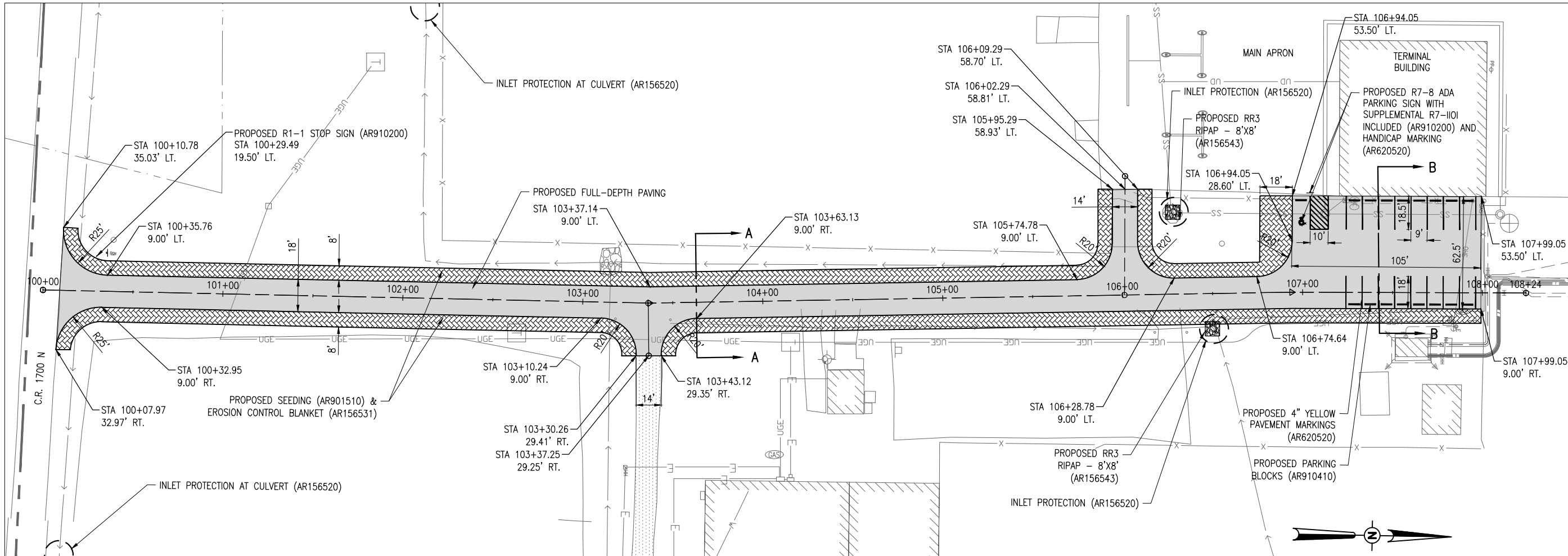
NO.	DATE	DESCRIPTION		
		DES	DWN	REV

ISSUE: 02/28/2020 (FOR BID)
PROJECT NO: 19A0104
CAD FILE: C-006-REM.DWG
DESIGN BY: KBS 1/15/2020
DRAWN BY: HLE 1/15/2020
REVIEWED BY: KBS 2/27/2020

EXISTING	LEGEND
	ENTRANCE ROAD (OIL AND CHIP)
	AIRPORT PROPERTY LINE
	AIRPORT FENCE (AIRFIELD)
	UNDERGROUND ELECTRIC LINE (PRIMARY)
	ELECTRIC LINE
	STORM SEWER
	GAS LINE
	MANHOLE
	LIGHTING

SHEET TITLE

REMOVAL PLAN



REHABILITATION OF AIRPORT ENTRANCE ROAD AND PARKING LOT

IDA No: VLA-4737
SBG No:
3-17-SBGP-120/133/139

Contract No: VA021

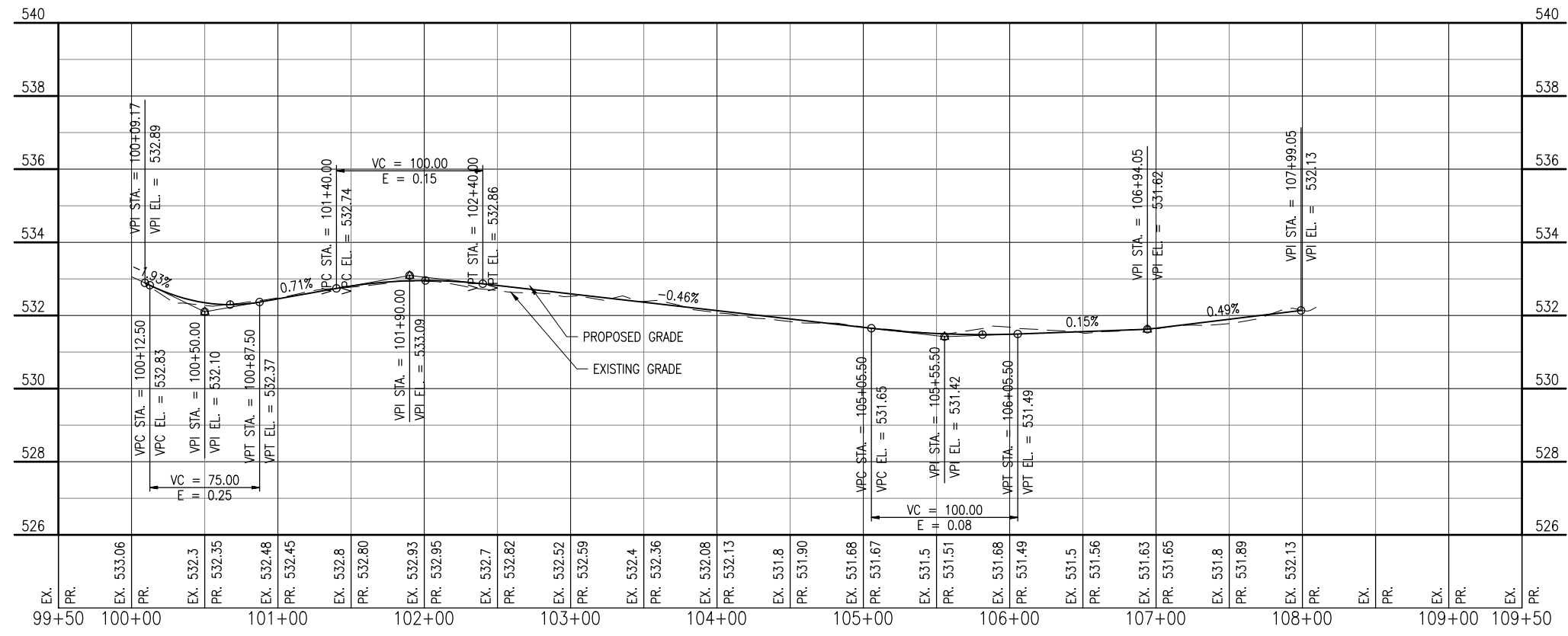
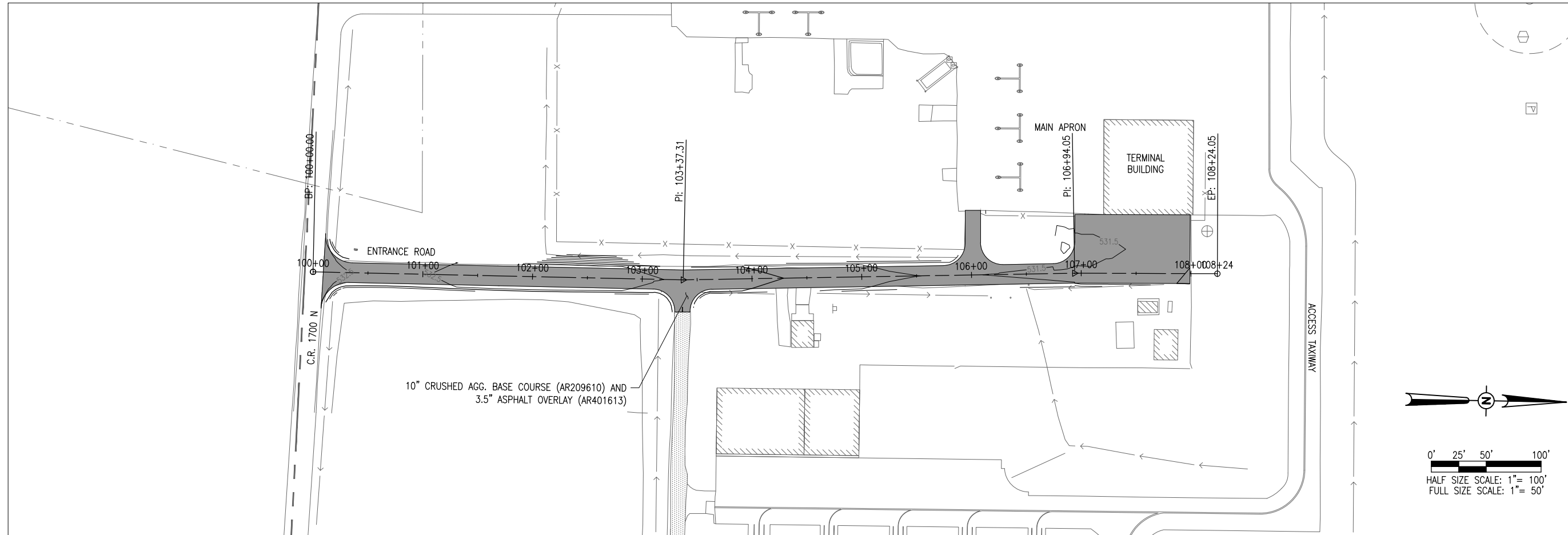
NO.	DATE	DESCRIPTION		
		DES	DWN	REV

ISSUE: 02/28/2020 (FOR BID)
PROJECT NO: 19A0104
CAD FILE: C-007-CON.DWG
DESIGN BY: KBS 1/15/2020
DRAWN BY: HLE 1/15/2020
REVIEWED BY: KBS 2/27/2020

SHEET TITLE

CONSTRUCTION PLAN

EXISTING	PROPOSED	LEGEND
		AR401613 - BIT. SURFACE COURSE
		AR901510 - SEEDING & AR156531 - EROSION CONTROL BLANKET
		AIRPORT PROPERTY LINE
		AIRPORT FENCE
		UNDERGROUND ELECTRIC LINE (PRIMARY)
		ELECTRIC LINE
		STORM SEWER
		GAS LINE
		MANHOLE
		LIGHTING



REHABILITATION OF
AIRPORT ENTRANCE
ROAD AND PARKING
LOT

IDA No: VLA-4737
SBG No:
3-17-SBGP-120/133/139

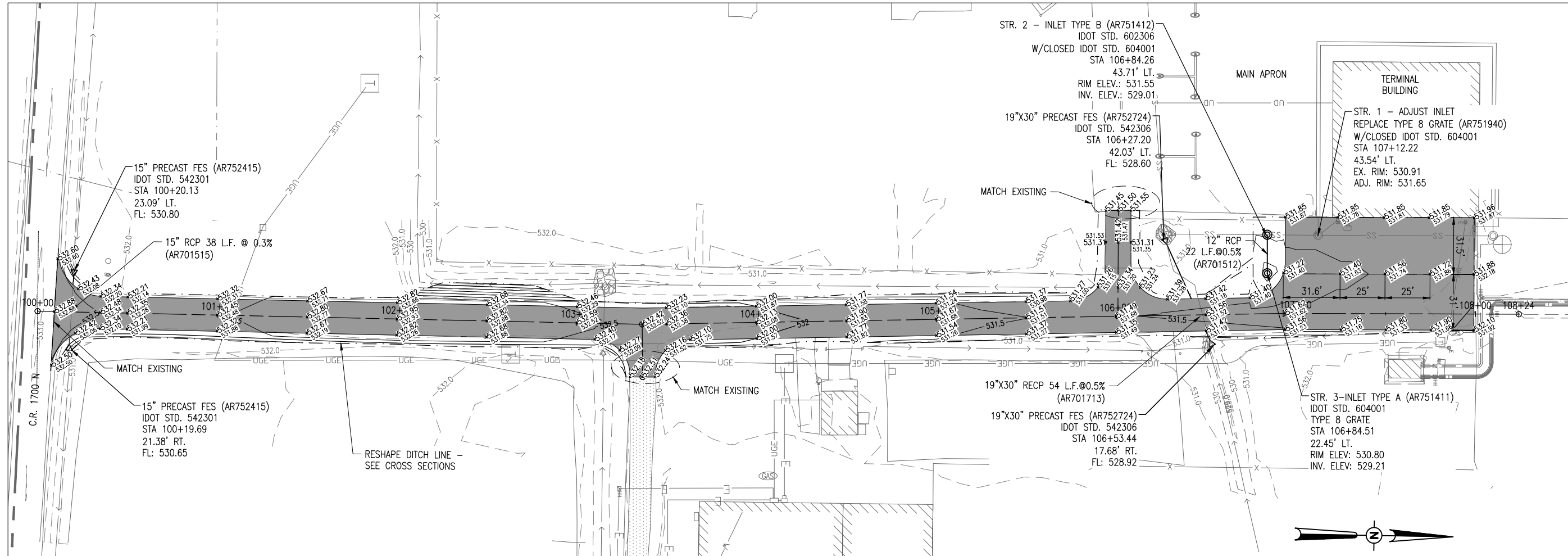
Contract No: VA021

NO.	DATE	DESCRIPTION		
		DES	DWN	REV

ISSUE: 02/28/2020 (FOR BID)
PROJECT NO: 19A0104
CAD FILE: C-008-PNP.DWG
DESIGN BY: KBS 1/15/2020
DRAWN BY: HLE 1/15/2020
REVIEWED BY: KBS 2/27/2020

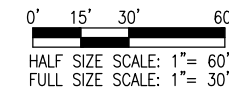
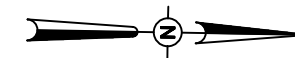
SHEET TITLE

PLAN AND PROFILE



GRADING AND DRAINAGE NOTES

1. CONTRACTOR SHALL ENSURE ALL DISTURBED TURF AREAS HAVE A MINIMUM OF 4" TOPSOIL IN PLACE PRIOR TO SEEDING.
2. REFER TO NOTED IDOT HIGHWAYS STANDARDS FOR DRAINAGE STRUCTURE DETAILS.



REHABILITATION OF AIRPORT ENTRANCE ROAD AND PARKING LOT

IDA No: VLA-4737
SBG No:
3-17-SBGP-120/133/139

Contract No: VA021

NO.	DATE	DESCRIPTION		
		DES	DWN	REV

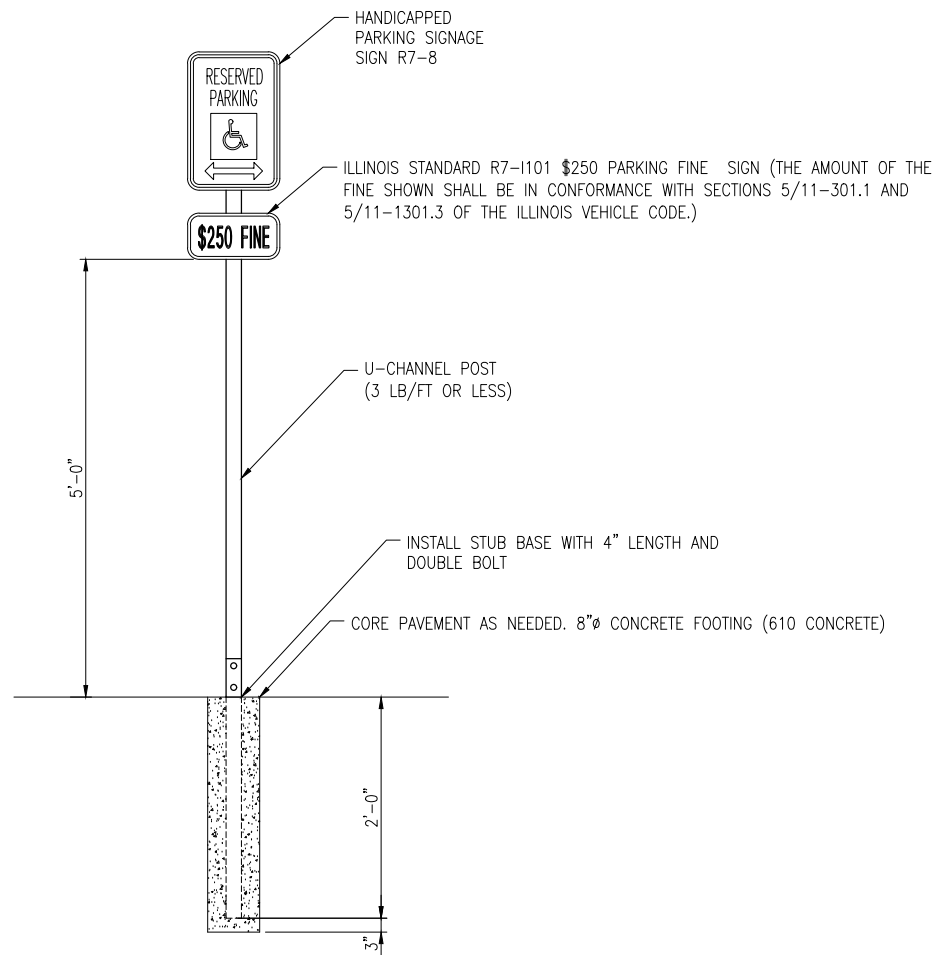
ISSUE: 02/28/2020 (FOR BID)

PROJECT NO: 19A0104
CAD FILE: C-009-GRD.DWG
DESIGN BY: KBS 1/15/2020
DRAWN BY: HLE 1/15/2020
REVIEWED BY: KBS 2/27/2020

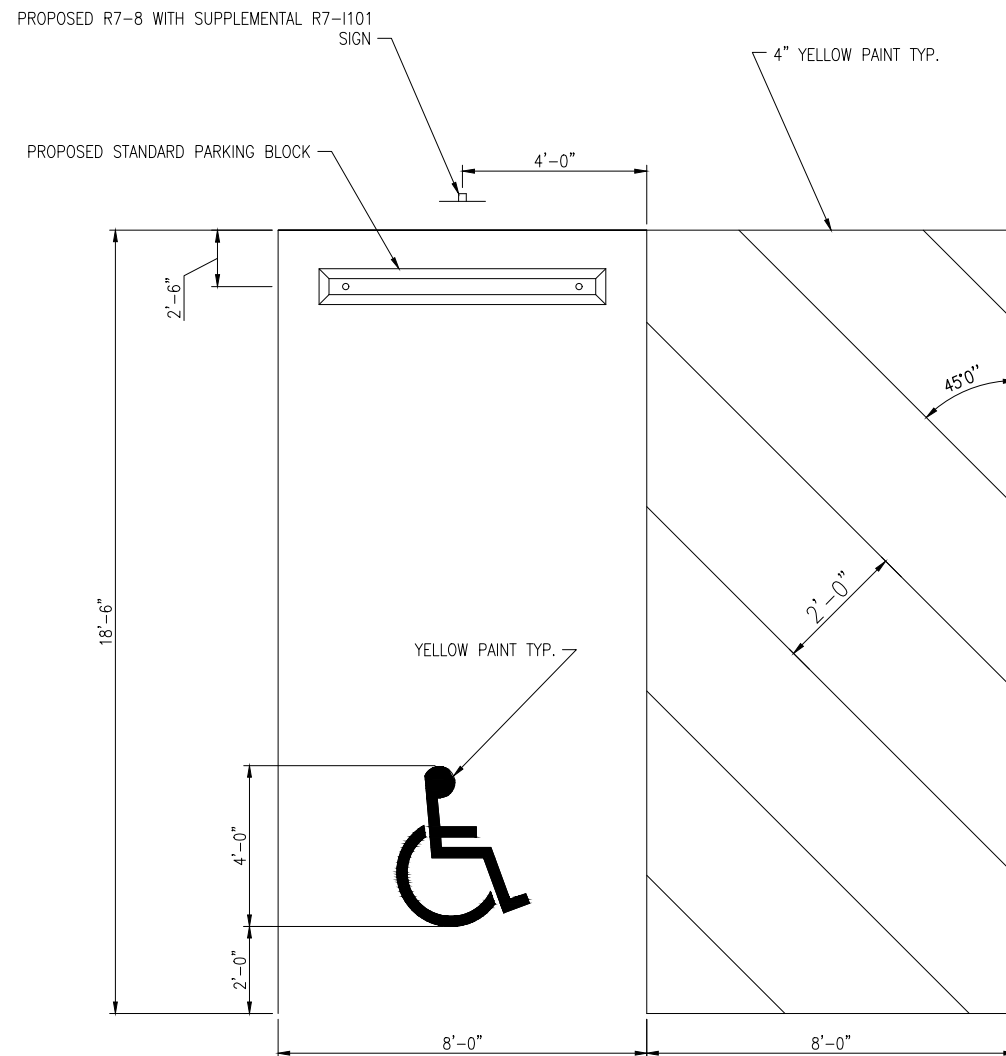
SHEET TITLE

GRADING AND DRAINAGE PLAN

EXISTING	PROPOSED	LEGEND
		BITUMINOUS PAVEMENT
		1-FOOT CONTOURS
		ELEVATION



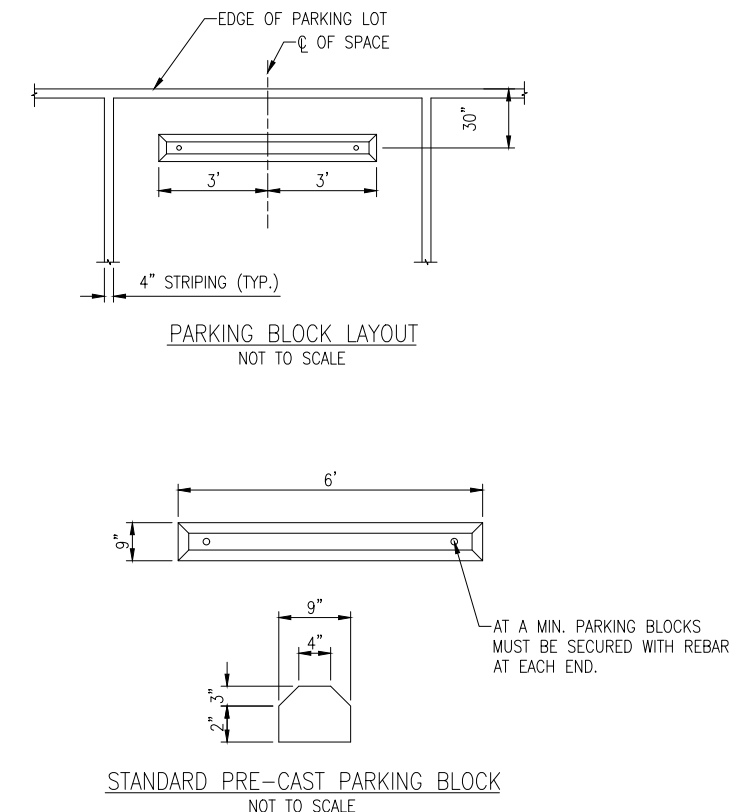
TYPICAL SIGNAGE DETAIL
NOT TO SCALE



TYPICAL HANDICAPPED PARKING SPACE PAINT STRIPING

SCALE: NONE

NOTE: CENTER SYMBOL AND PARKING BLOCK HORIZONTALLY IN STALL.



NOTES: A FUNCTIONAL EQUIVALENT OF THE STANDARD PARKING BLOCK MAY BE USED IF APPROVED BY THE ENGINEER AND AIRPORT MANAGER PRIOR TO INSTALLATION.

THE PARKING BLOCK SHALL BE INSTALLED WITH A MIN OF TWO PINS AT EACH END WITH A MIN EMBEDMENT OF 15" AND BE PAINTED YELLOW.

REHABILITATION OF AIRPORT ENTRANCE ROAD AND PARKING LOT

IDA No: VLA-4737
SBG No:
3-17-SBGP-120/133/139

Contract No: VA021

NO.	DATE	DESCRIPTION		
		DES	DWN	REV

ISSUE: 02/28/2020 (FOR BID)

PROJECT NO: 19A0104
CAD FILE: C-501-TYP.DWG
DESIGN BY: MJD
DRAWN BY: MJD
REVIEWED BY: KBS 2/27/2020

SHEET TITLE

PARKING DETAILS

REHABILITATION OF
AIRPORT ENTRANCE
ROAD AND PARKING
LOT

IDA No: VLA-4737
SBG No:
3-17-SBGP-120/133/139

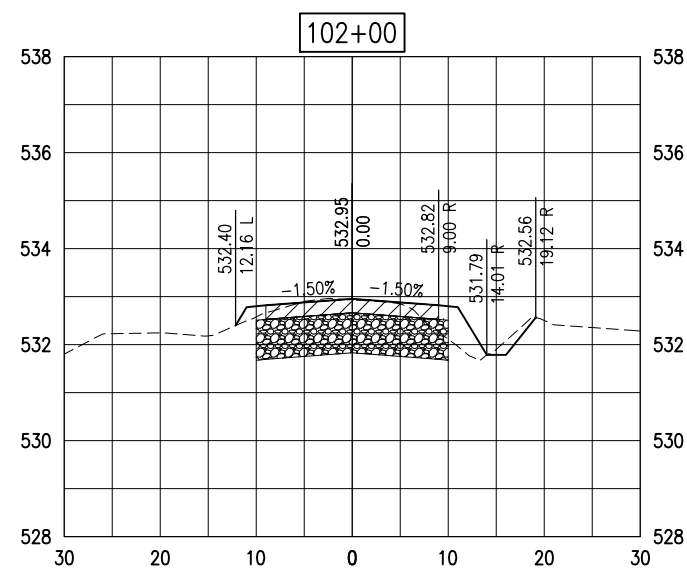
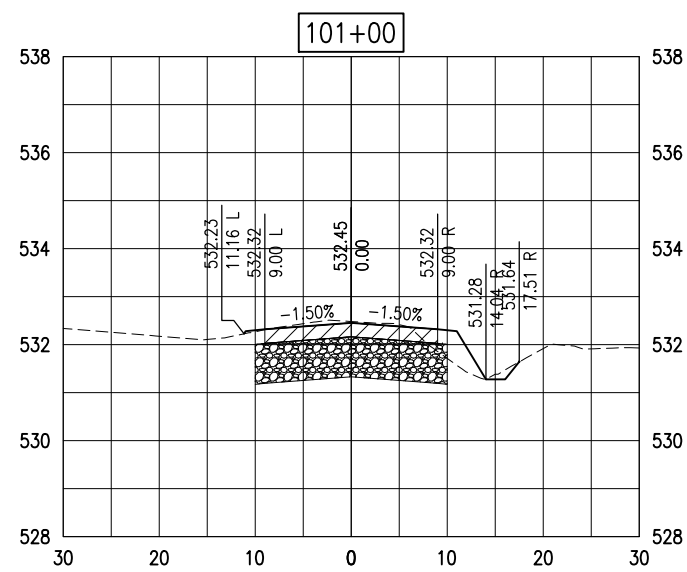
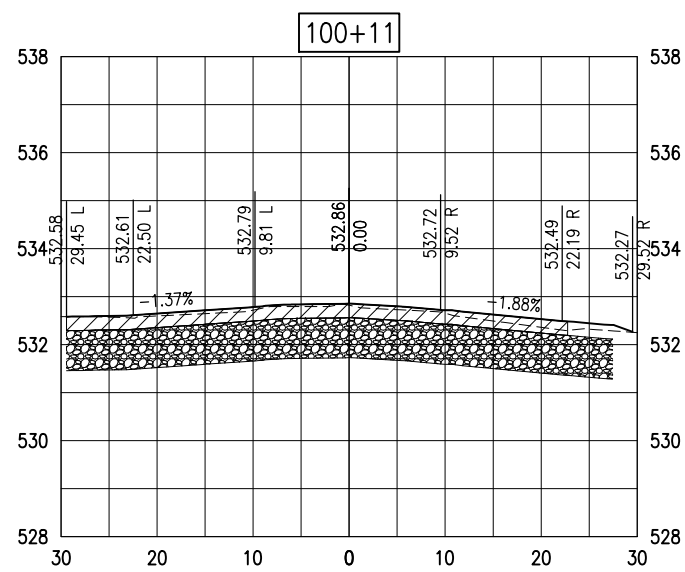
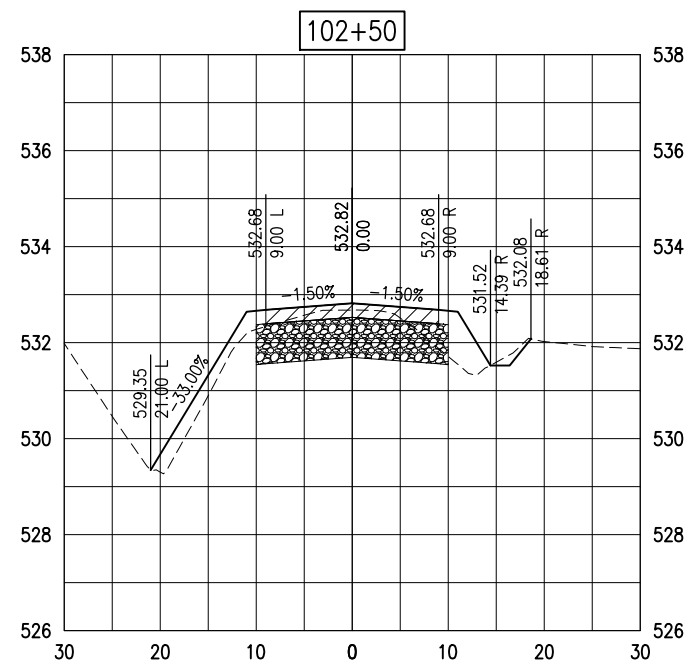
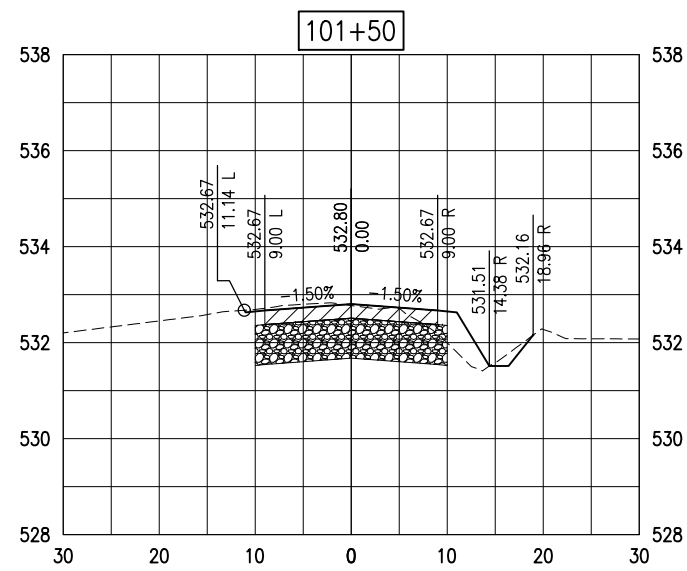
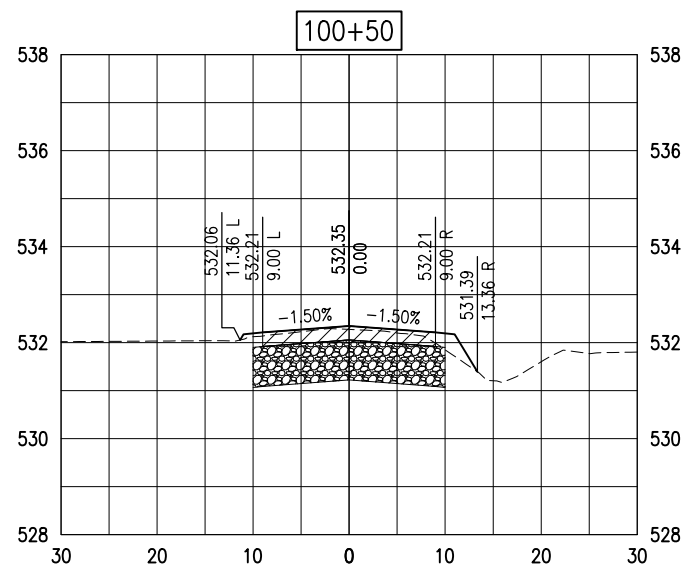
Contract No: VA021

NO.	DATE	DESCRIPTION		
		DES	DWN	REV

ISSUE: 02/28/2020 (FOR BID)
PROJECT NO: 19A0104
CAD FILE: C-301-XS.DWG
DESIGN BY: MJD
DRAWN BY: MJD
REVIEWED BY: KBS 2/27/2020

SHEET TITLE

CROSS SECTIONS -
SHEET 1



REHABILITATION OF
AIRPORT ENTRANCE
ROAD AND PARKING
LOT

IDA No: VLA-4737
SBG No:
3-17-SBGP-120/133/139

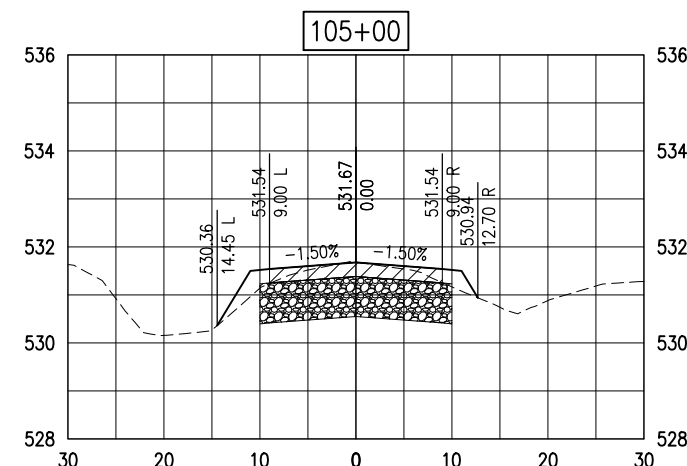
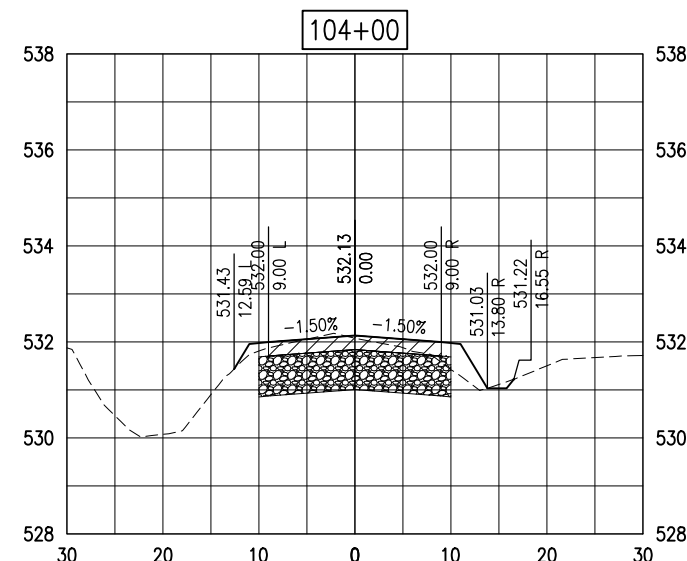
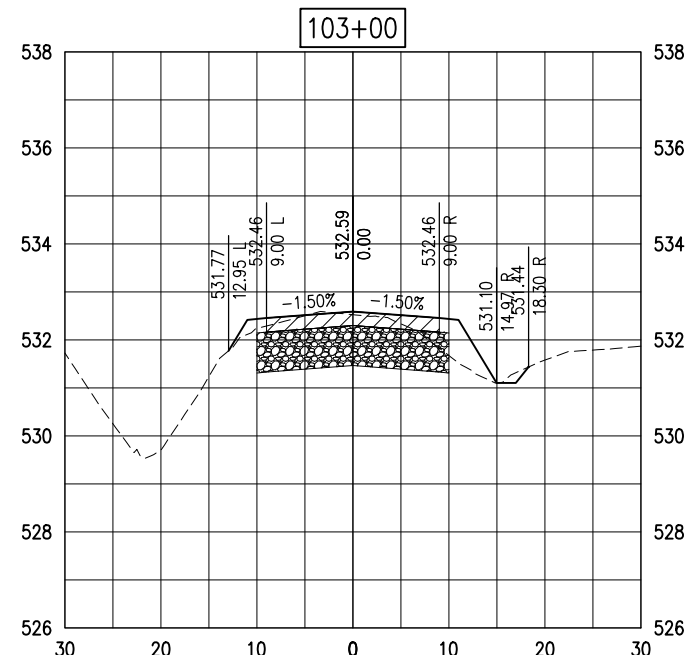
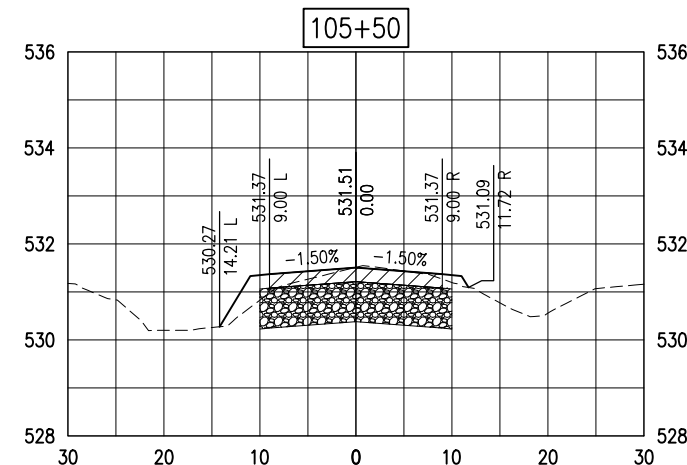
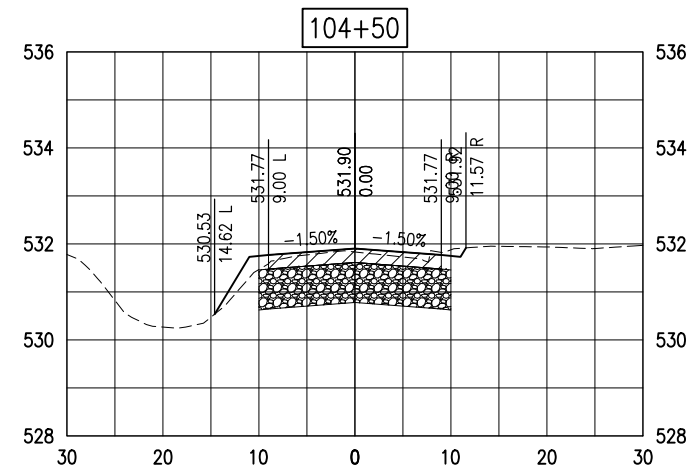
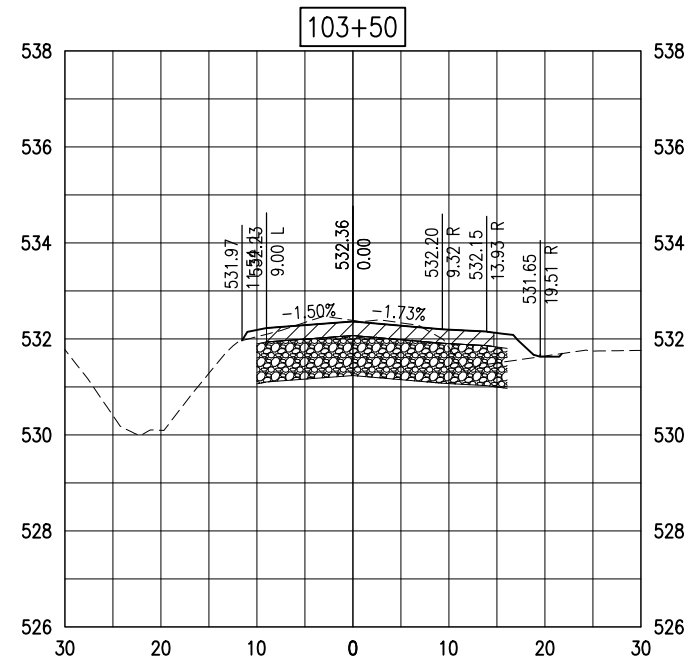
Contract No: VA021

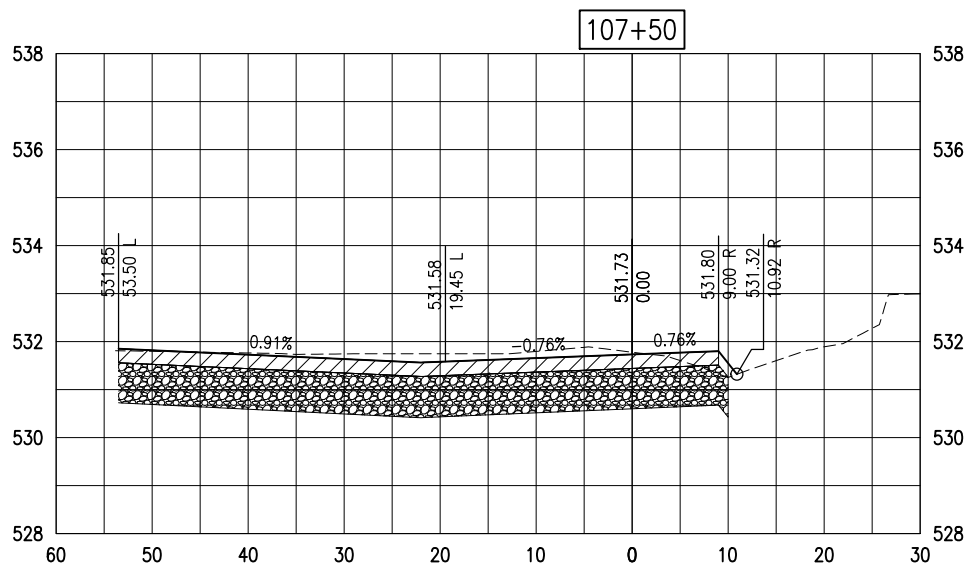
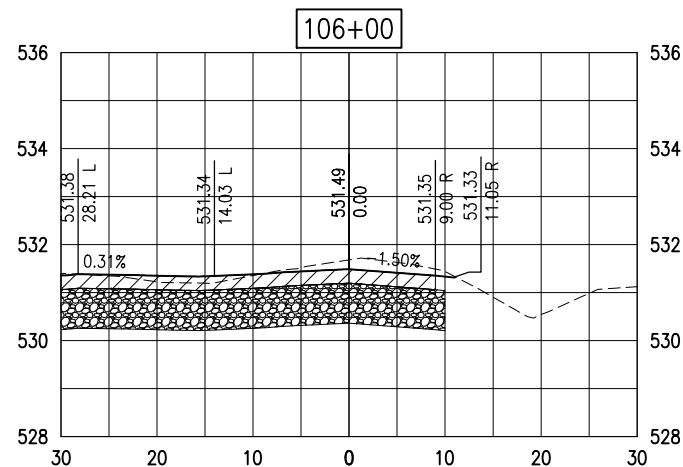
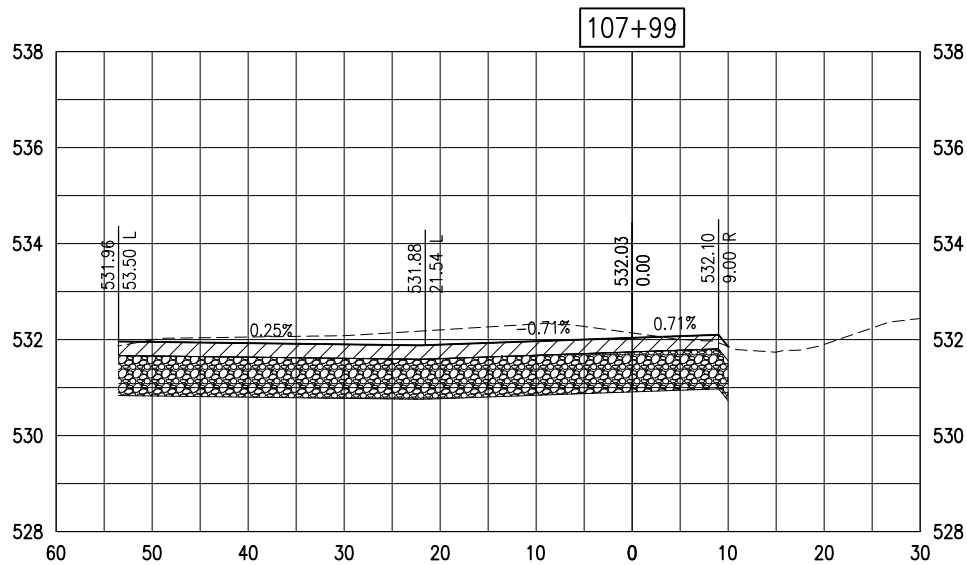
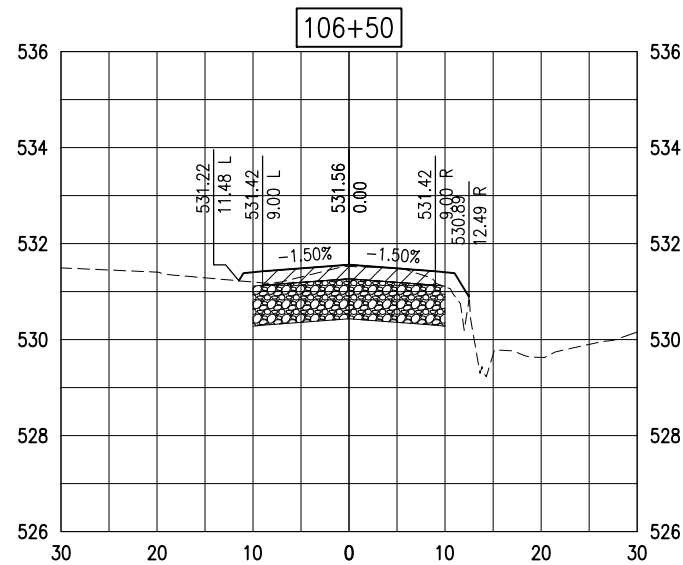
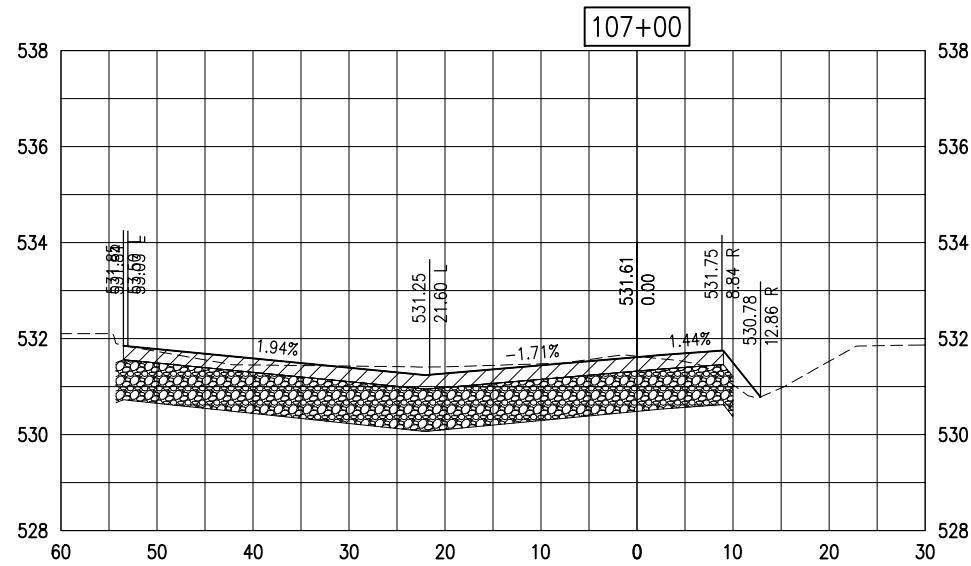
NO.	DATE	DESCRIPTION		
		DES	DWN	REV

ISSUE: 02/28/2020 (FOR BID)
PROJECT NO: 19A0104
CAD FILE: C-301-XS.DWG
DESIGN BY: MJD
DRAWN BY: MJD
REVIEWED BY: KBS 2/27/2020

SHEET TITLE

CROSS SECTIONS -
SHEET 2





REHABILITATION OF
AIRPORT ENTRANCE
ROAD AND PARKING
LOT

IDA No: VLA-4737
SBG No:
3-17-SBGP-120/133/139

Contract No: VA021

NO.	DATE	DESCRIPTION		
		DES	DWN	REV

ISSUE: 02/28/2020 (FOR BID)
PROJECT NO: 19A0104
CAD FILE: C-301-XS.DWG
DESIGN BY: MJD
DRAWN BY: MJD
REVIEWED BY: KBS 2/27/2020

SHEET TITLE

CROSS SECTIONS -
SHEET 3