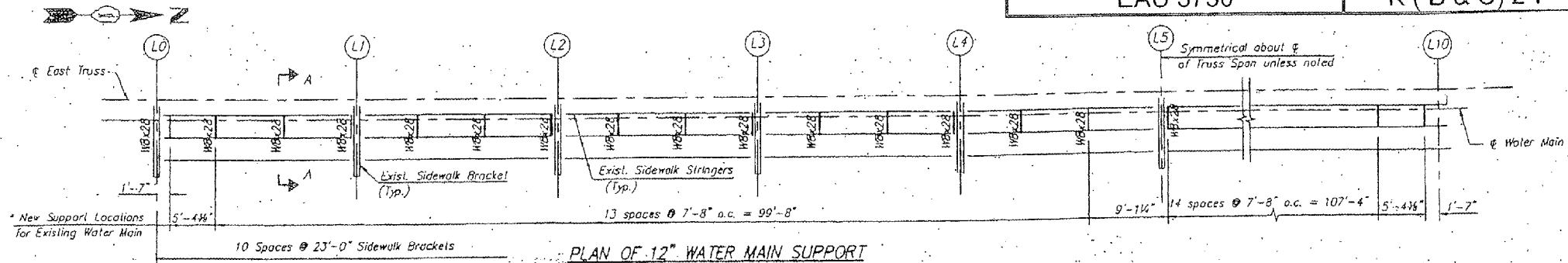
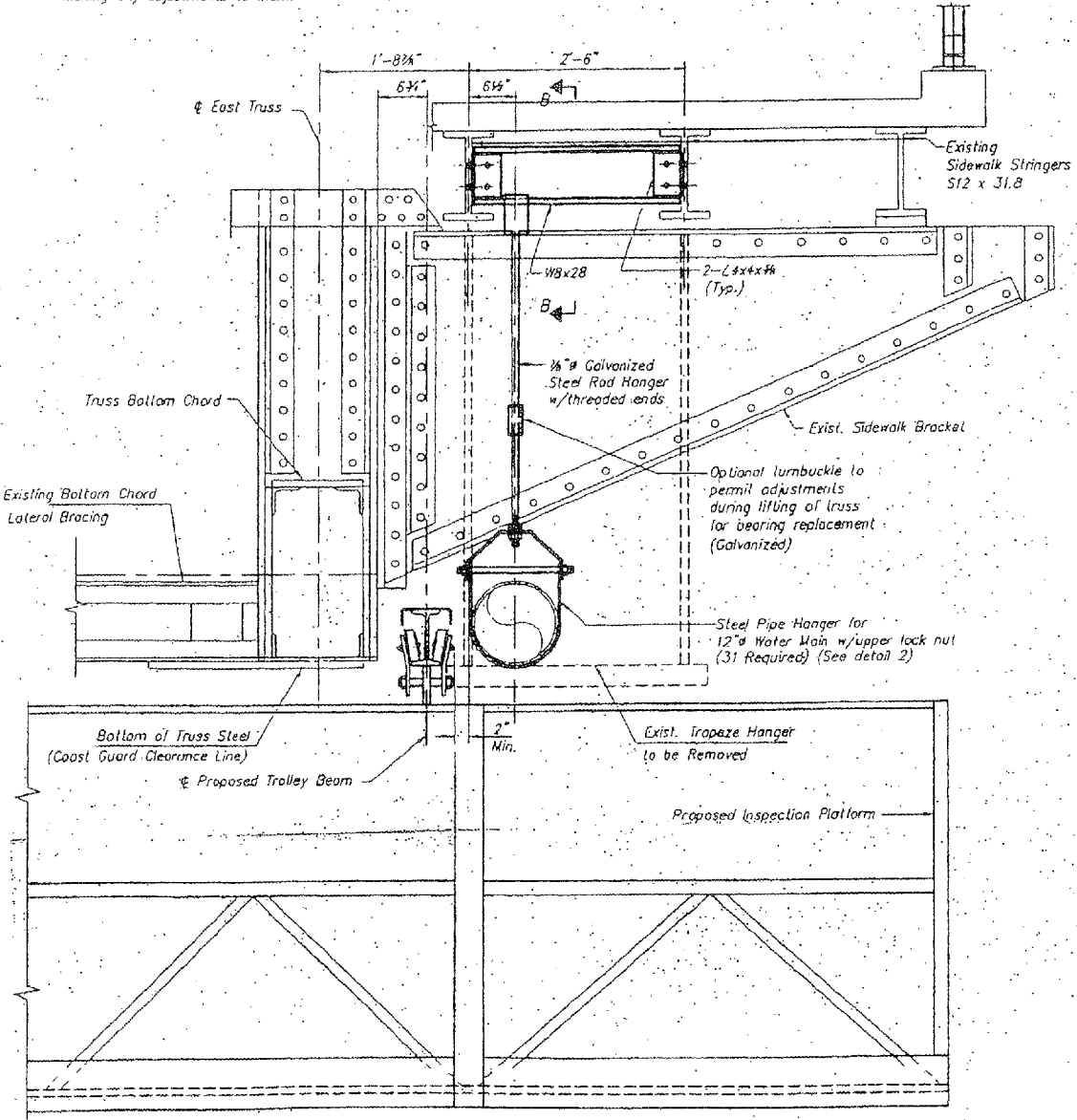


Contract 60C27

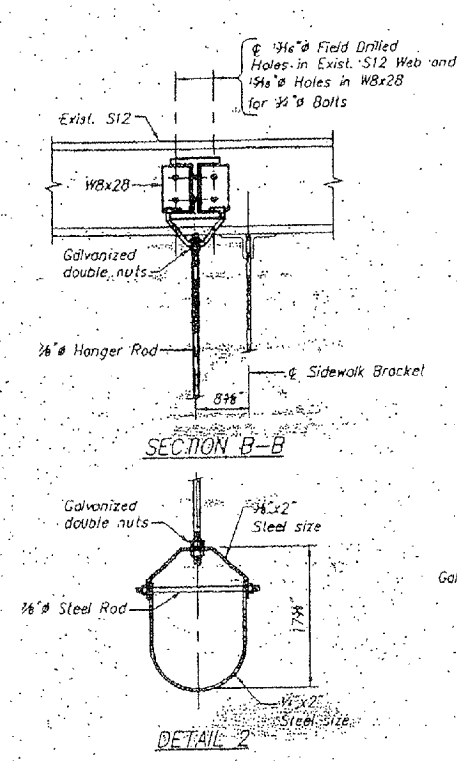


PLAN OF 12" WATER MAIN SUPPORT
(For East Side of Bridge only)

* The Contractor shall check these locations for any interferences and coordinate with Engineer before making any adjustments to them.

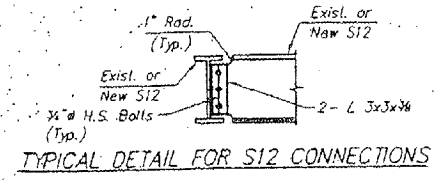


SECTION A-A



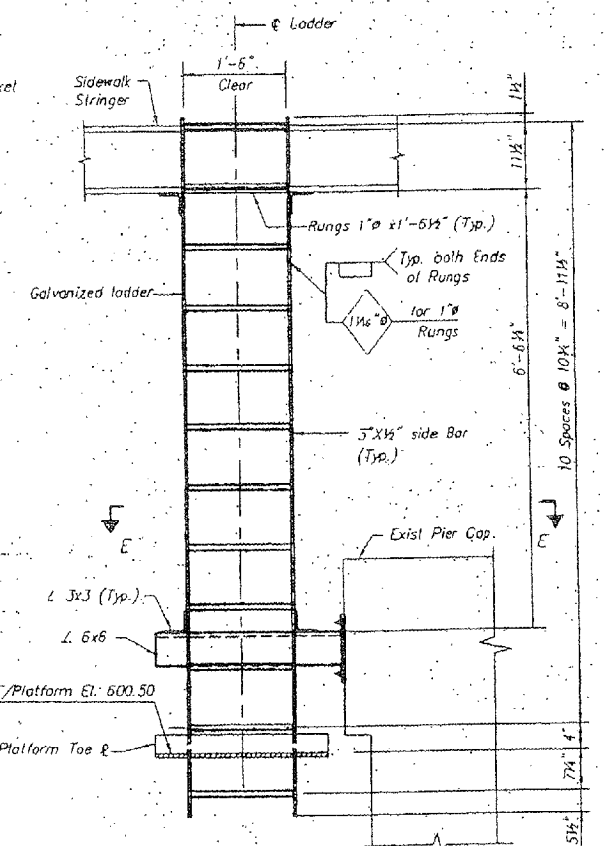
SECTION B-B

DETAIL 2



TYPICAL DETAIL FOR S12 CONNECTIONS

The cost of modifying existing sidewalk stringers and furnishing and installing new S12x31.8 for sidewalk hatch opening is included in the cost of furnishing and erecting structural steel.



SECTION D-D
LADDER DETAIL

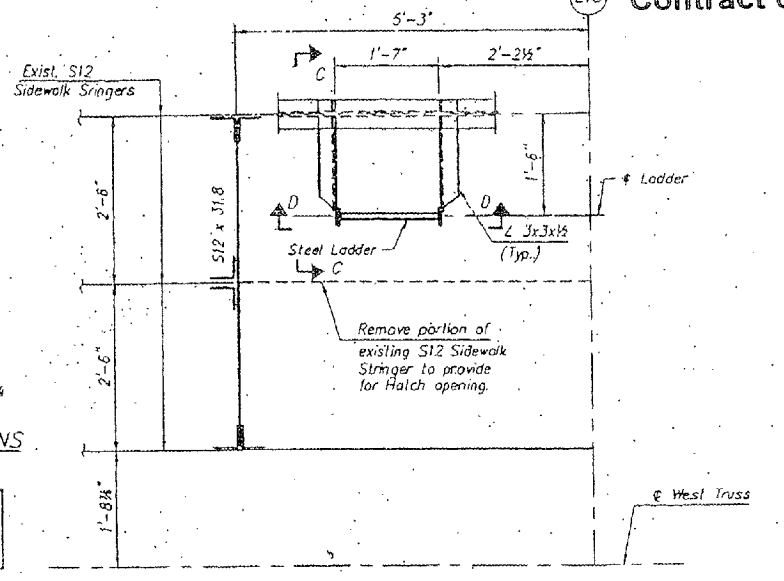
(1 ladder required, only at north Pier)

The cost of furnishing and installing the Platform Access Ladder is included in the cost of the pay item "Bridge Inspection Platform."

BILL OF MATERIAL

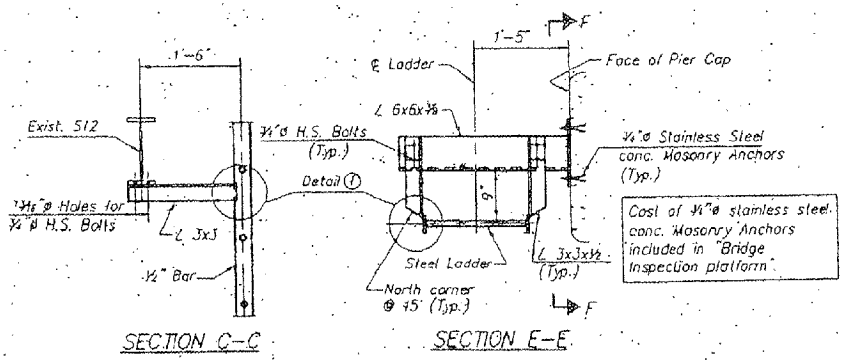
ITEM	UNIT	TOTAL
Remove Water Main Hanger Assembly 12"	EACH	31
Water Main Hanger Assembly 12"	EACH	31

FOR INFORMATION ONLY



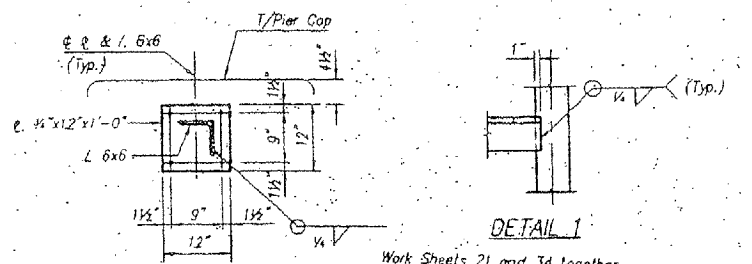
ARRANGEMENT FOR HATCH OPENING & LADDER SUPPORT

Note: Prior to removing portion of existing stringer, the stringer must be supported until new connections are made. Ladder and its attachment required only at North Pier.



SECTION C-C

SECTION E-E



SECTION F-F

DETAIL 1

Work Sheets 21 and 34 together.
The cost of furnishing and installing new supports for 12" water main including beams, pipe flange, clamps, fasteners and new transverse sidewalk framing members shall be included in cost of pay item "Water Main Hanger Assembly 12".

ILLINOIS DEPARTMENT OF TRANSPORTATION
INSPECTION PLATFORM DETAILS
IL 1 (HALSTED STREET)
OVER LITTLE CALUMET RIVER
SN 016-0193