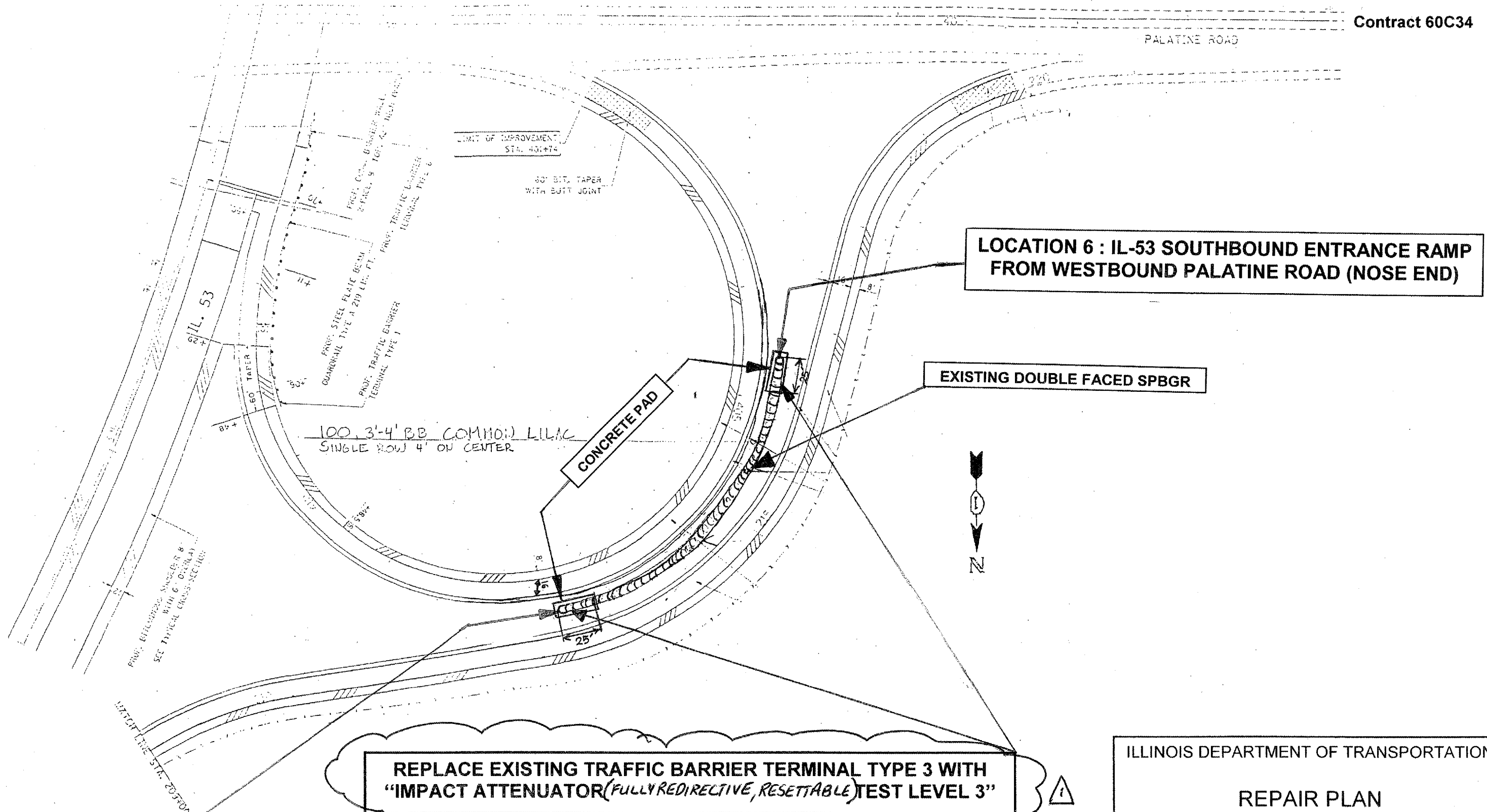


ROUTE	SECTION	COUNTY	TOTAL SHEETS	SHEET NUMBER
VARIOUS	2007-009 GR	VARIOUS	27	19

Contract 60C34

PALATINE ROAD



LOCATION 6 : IL-53 SOUTHBOUND ENTRANCE RAMP FROM WESTBOUND PALATINE ROAD (NOSE END)

EXISTING DOUBLE FACED SPBGR

REPLACE EXISTING TRAFFIC BARRIER TERMINAL TYPE 3 WITH "IMPACT ATTENUATOR (FULLY REDIRECTIVE, RESETTABLE) TEST LEVEL 3"

LOCATION 7 : IL-53 SOUTHBOUND ENTRANCE RAMP FROM WESTBOUND PALATINE ROAD (EXIT END)

ILLINOIS DEPARTMENT OF TRANSPORTATION
 REPAIR PLAN
 LOCATIONS: 6 AND 7
 IL-53 SB AT WB PALATINE RD

SHEET 1 OF 2

Rev. 4-17-08