

STATE OF ILLINOIS
DEPARTMENT OF TRANSPORTATION
DIVISION OF HIGHWAYS

PROPOSED HIGHWAY PLANS

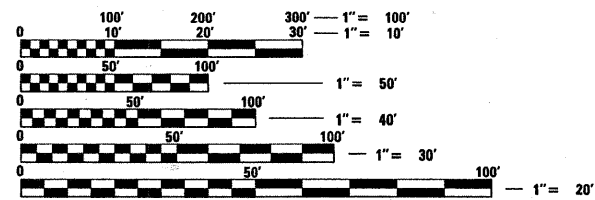
F.A.U. ROUTE 1339: IL 53 (BIESTERFIELD RD)
OVER I-290
SECTION: 0101-311 HB-I
BRIDGE PARAPET REPLACEMENT
COOK COUNTY
C-91-213-07

F.A.U. RTE.	SECTION	COUNTY	TOTAL SHEETS	SHEET NO.
1339	0101-311 HB-I	COOK	12	1
FED. ROAD DIST. NO.	ILLINOIS	CONTRACT NO.	60C44	

FOR INDEX OF SHEETS, SEE SHEET NO. 2

IMPROVEMENT IS LOCATED
IN ELK GROVE VILLAGE

LOCATION OF IMPROVEMENT
SN 016-0960

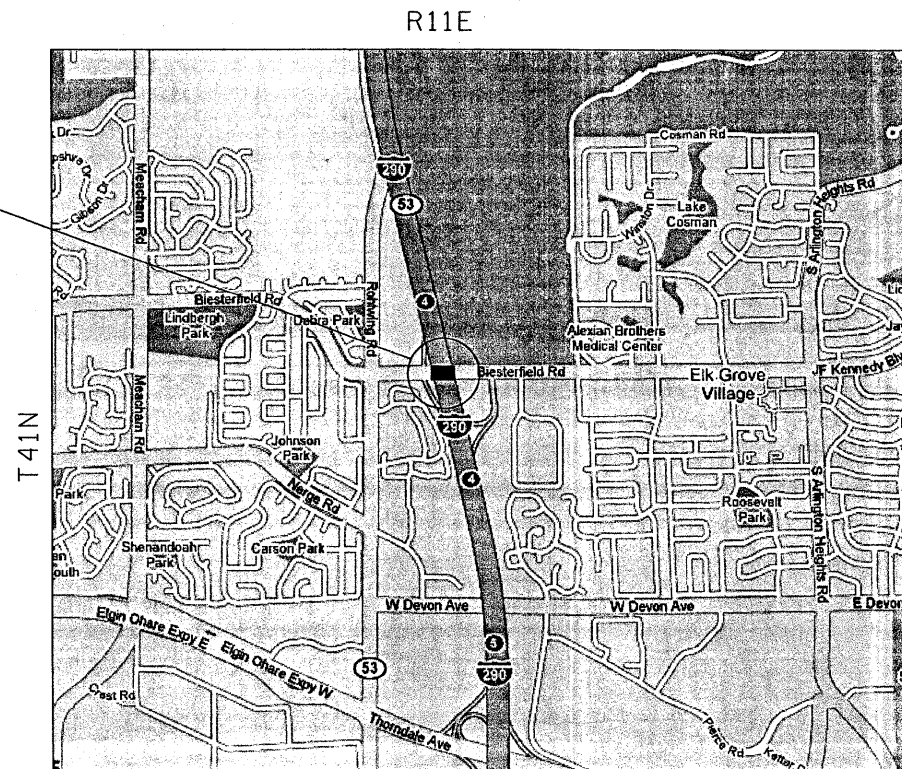


FULL SIZE PLANS HAVE BEEN PREPARED USING STANDARD ENGINEERING SCALES. REDUCED SIZED PLANS WILL NOT CONFORM TO STANDARD SCALES. IN MAKING MEASUREMENTS ON REDUCED PLANS, THE ABOVE SCALES MAY BE USED.

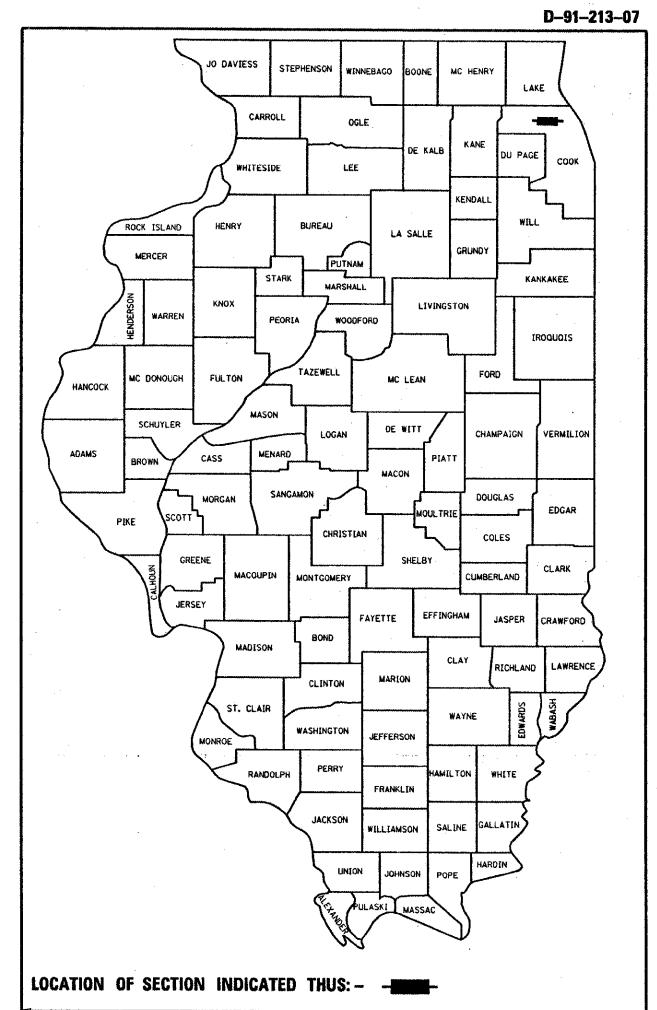
J.U.L.I.E.
JOINT UTILITY LOCATION INFORMATION FOR EXCAVATION
1-800-892-0123
OR 811

PROJECT ENGINEER - BOB BORO (847) 705-4178
PROJECT MANAGER - KEN ENG

CONTRACT NO. 60C44



ELK GROVE AND JEFFERSON TOWNSHIPS



TRAFFIC DATA I-290
2005 ADT = 167,700
POSTED SPEED = 55 MPH

TRAFFIC DATA IL 53 (BIESTERFIELD RD.)
2005 ADT = 35,000
POSTED SPEED = 40 MPH

STATE OF ILLINOIS
DEPARTMENT OF TRANSPORTATION
DIVISION OF HIGHWAYS

SUBMITTED FEBRUARY 13, 20 08

Diana M. O'Keefe
DEPUTY DIRECTOR OF HIGHWAYS, REGION ENGINEER

March 21, 20 08

Eric E. Harbeck
INTERIM ENGINEER OF DESIGN AND ENVIRONMENT

March 21, 20 08

Christina M. Reed
DIRECTOR OF HIGHWAYS, CHIEF ENGINEER

PRINTED BY THE AUTHORITY
OF THE STATE OF ILLINOIS

INDEX OF SHEETS

SHEET NO.	DESCRIPTION
1	COVER SHEET
2	INDEX OF SHEETS, STANDARDS, AND GENERAL NOTES
3	SUMMARY OF QUANTITIES
4	TRAFFIC STAGING PLAN
5-7	PLAN AND ELEVATION (BIESTERFIELD ROAD)
8	TRAFFIC CONTROL AND PROTECTION AT TURN BAYS (TO REMAIN OPEN TO TRAFFIC) (TC -14)
9	TRAFFIC CONTROL FOR SHOULDER CLOSURES AND PARTIAL RAMP CLOSURES
10-12	TYPE 6 TERMINAL FOR USE WITH 21" HIGH SPBGR (BM22)

LIST OF STATE STANDARDS

STANDARD NO.	DESCRIPTION
701301-02	LANE CLOSURE 2L, 2W SHORT TIME OPERATIONS
701400-02	APPROACH TO LANE CLOSURE, FREEWAY/EXPRESSWAY
701401-04	LANE CLOSURE, FREEWAY/EXPRESSWAY
701411-04	MULTI-LANE, TRAFFIC CONTROL AT ENTRANCE OR EXIT RAMP
701446	TWO LANE CLOSURE FREEWAY/EXPRESSWAY
701601-05	URBAN LANE CLOSURE MULTILANE 1W OR 2W WITH NONTRAVERSABLE MEDIAN
701901	TRAFFIC CONTROL DEVICES
704001-04	TEMPORARY CONCRETE BARRIER

GENERAL NOTES

BEFORE STARTING ANY EXCAVATION, THE CONTRACTOR SHALL CALL "JULIE" AT 800-892-0123 OR 811 FOR FIELD LOCATIONS OF BURIED ELECTRIC, TELEPHONE AND GAS FACILITIES. (48 HOUR NOTIFICATION IS REQUIRED).

THE CONTRACTOR SHALL COORDINATE CONSTRUCTION ACTIVITIES WITH UTILITY COMPANIES.

THE CONTRACTOR WILL NOT BE ALLOWED TO SET UP A YARD OR FIELD OFFICE ON STATE PROPERTY WITHOUT WRITTEN PERMISSION FROM THE DEPARTMENT

THE REMOVAL OF GUARDRAIL TERMINAL SECTIONS SHALL BE INCLUDED IN THE UNIT PRICE PER FOOT FOR "GUARDRAIL REMOVAL."

WHEN ARTIFICIAL LIGHTING IS UTILIZED IN NIGHT OPERATIONS, THE CONTRACTOR SHALL EXERCISE THE UTMOST PRECAUTIONS IN PREVENTING ADVERSE VISIBILITY TO THE MOTORING PUBLIC AND ADJOINING RESIDENTIAL AREAS.

ALL DAMAGE TO EXISTING PAVEMENT MARKINGS OR RAISED REFLECTIVE PAVEMENT MARKERS OUTSIDE THE REMOVAL LINE SHOWN ON THE PLANS SHALL BE REPLACED AT NO ADDITIONAL COST TO THE DEPARTMENT

DO NOT SCALE PLANS FOR CONSTRUCTION DIMENSIONS

IT SHALL BE THE CONTRACTOR'S RESPONSIBILITY TO VERIFY ALL DIMENSIONS AND CONDITIONS EXISTING IN THE FIELD PRIOR TO CONSTRUCTION AND ORDERING OF MATERIALS

THE CONTRACTOR SHALL CONTACT THE DISTRICT ONE TRAFFIC CONTROL SUPERVISOR AT (847)705-4470 (FOR ARTERIALS) AND (847)705-4151 (FOR EXPRESSWAYS) A MINIMUM OF 72 HOURS IN ADVANCE OF BEGINNING WORK.

THESE PLANS HAVE BEEN PREPARED FROM NOTES RECEIVED FROM THE BUREAU OF BRIDGE INSPECTORS

THE CONTRACTOR SHALL BE REQUIRED TO PROVIDE ACCESS TO ABUTTING PROPERTY AT ALL TIMES DURING THE CONSTRUCTION OF THIS PROJECT

THE "ADVANCE WARNING SIGN DETAIL FOR ARTERIAL TRAFFIC" LOCATED IN THE SPECIAL PROVISIONS FOR "TEMPORARY INFORMATION SIGNING FOR LANE CLOSURES IS APPLICABLE ONLY TO ARTERIAL ROAD AND SHALL NOT BE APPLIED TO EXPRESSWAYS.

CONCRETE SUPERSTRUCTURE (OR CONCRETE WEARING SURFACE) SHALL HAVE A SEVEN DAY MINIMUM CURE

THE CONTRACTOR SHALL SALVAGE AND RETURN THE EXISTING HANDRAIL (262') TO:

DISTRICT BRIDGE OFFICE
1101 BIESTERFIELD
ELK GROVE VILLAGE, IL 60120

THIS WORK SHALL INCLUDE REMOVING, TRANSPORTING AND UNLOADING THE EXISTING CARRIER BEAM TO THE ABOVE YARD WHICH COST IS INCLUDED IN THE COST OF "BRIDGE HANDRAIL REMOVAL".

NO SLIPFORMING OF PARAPETS IS ALLOWED

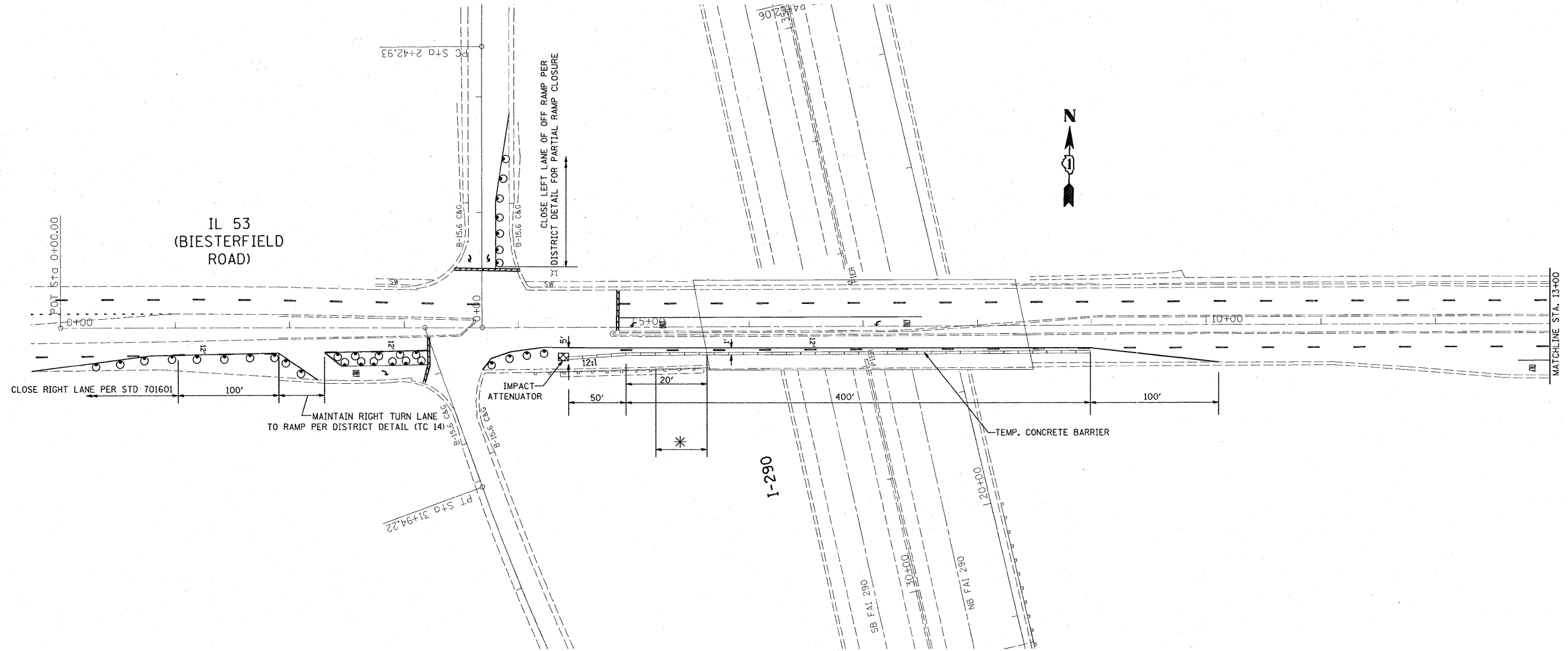
FILE NAME = c:\projects\dl21307\sh_rdw.dgn	USER NAME = guillaumejp	DESIGNED -	REVISED -	STATE OF ILLINOIS DEPARTMENT OF TRANSPORTATION	IL 53 (BIESTERFIELD RD) INDEX OF SHEETS, STATE STANDARDS AND GENERAL NOTES	F.A.U RTE 1339	SECTION 0101-311 HB-1	COUNTY COOK	TOTAL SHEETS 12	SHEET NO. 2	Rev.
PLOT SCALE = 50.0000' / IN.	CHECKED -	REVISED -	SCALE:			SHEET NO. OF SHEETS	STA. TO STA.	FED. ROAD DIST. NO. 1 ILLINOIS FED. AID PROJECT			CONTRACT NO. 60C44
PLOT DATE = 2/21/2008	DATE -	REVISED -									

SUMMARY OF QUANTITIES			URBAN TOTAL QUANTITIES 100% STATE	CONSTRUCTION TYPE CODE					SUMMARY OF QUANTITIES			TOTAL QUANTITIES	CONSTRUCTION TYPE CODE					
CODE NO	ITEM	UNIT		SFTY-2A						CODE NO	ITEM		UNIT					
50102400	CONCRETE REMOVAL	CU YD	32.2	32.2														
50104100	BRIDGE HANDRAIL REMOVAL	FOOT	262	262														
50300255	CONCRETE SUPERSTRUCTURE	CU YD	36.8	36.8														
50300300	PROTECTIVE COAT	SO YD	118.2	118.2														
50800205	REINFORCEMENT BARS, EPOXY COATED	POUND	5410	5410														
* 63100085	TRAFFIC BARRIER TERMINAL, TYPE 6	EACH	1	1														
63200310	GUARDRAIL REMOVAL	FOOT	45	45														
67000400	ENGINEER'S FIELD OFFICE, TYPE A	CAL MO	3	3														
67100100	MOBILIZATION	L SUM	1	1														
70101800	TRAFFIC CONTROL AND PROTECTION, (SPECIAL)	L SUM	1	1														
70400100	TEMPORARY CONCRETE BARRIER	FOOT	450	450														
X0322467	TEMPORARY INFORMATION SIGNING FOR LANE CLOSURE	SO FT	48	48														
X7011015	TRAFFIC CONTROL AND PROTECTION (EXPRESSWAYS)	L SUM	1	1														
Z0030240	IMPACT ATTENUATORS, TEMPORARY (NON- REDIRECTIVE), TEST LEVEL 2	EACH	1	1														

* SPECIALTY ITEMS

REVISIONS	
NAME	DATE

ILLINOIS DEPARTMENT OF TRANSPORTATION
SUMMARY OF QUANTITIES



PLAN

* REMOVE EXISTING GUARDRAIL TERMINAL CONNECTION TO BRIDGE AND INSTALL NEW TRAFFIC BARRIER TERMINAL TYPE 6 PER DISTRICT DETAIL (BM 22)

NOTES:
 COST OF TRAFFIC CONTROL ITEMS SHOWN ON THIS SHEET ARE INCLUDED IN THE COST OF "TRAFFIC CONTROL & PROTECTION (SPECIAL)"
 COVER CONFLICTING PAVEMENT MARKINGS WITH BLACK TYPE III TAPE.
 COST OF TYPE III TAPE AND ITS REMOVAL IS INCLUDED IN THE COST OF "TRAFFIC CONTROL & PROTECTION (SPECIAL)"

FILE NAME = c:\projects\d121307\sh.ndwg.dgn	USER NAME = guillaumejp	DESIGNED -	REVISED -	STATE OF ILLINOIS DEPARTMENT OF TRANSPORTATION	TRAFFIC STAGING PLAN BIESTERFIELD RD. OVER I-290			F.A.U. RTE.	SECTION	COUNTY	TOTAL SHEETS	SHEET NO.	
	PLOT SCALE = 50,0000 ' / IN.	DRAWN -	REVISED -		SCALE: 1"=50'	SHEET NO.	OF	SHEETS	STA.	TO STA.	1339	0101-311 HB-1	COOK
PLOT DATE = 2/21/2008	DATE -	CHECKED -	REVISED -					CONTRACT NO. 60C44		FED. ROAD DIST. NO. 1 ILLINOIS FED. AID PROJECT			

STATE OF ILLINOIS
DEPARTMENT OF TRANSPORTATION

ROUTE NO.	SECTION	COUNTY	TOTAL SHEETS	SHEET NO.	SHEET NO. 1
1 290		COOK	12	5	3 SHEETS
FED. ROAD DIST. NO. 7	ILLINOIS	FED. AID PROJECT			

Contract Number: 60C44

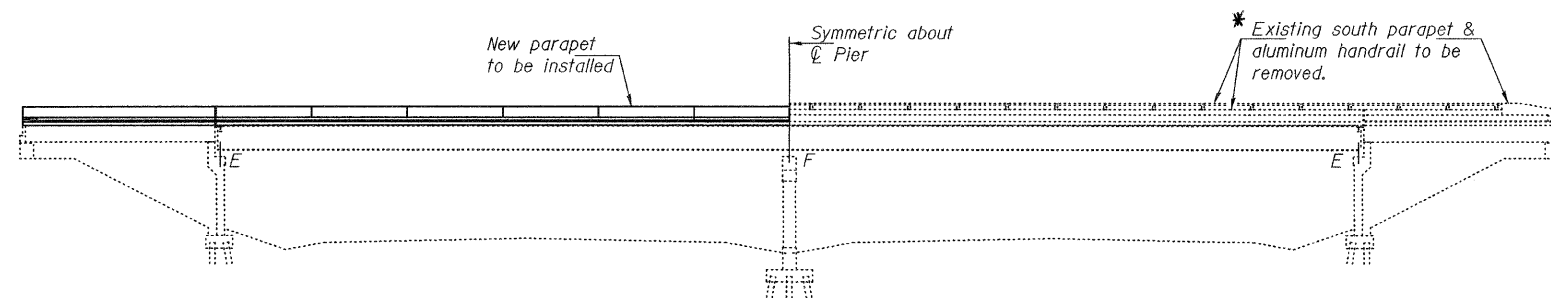
GENERAL NOTES

Reinforcement bars shall conform to the requirements of ASTM A 706 Gr 60 (IL Modified). See Special Provisions.

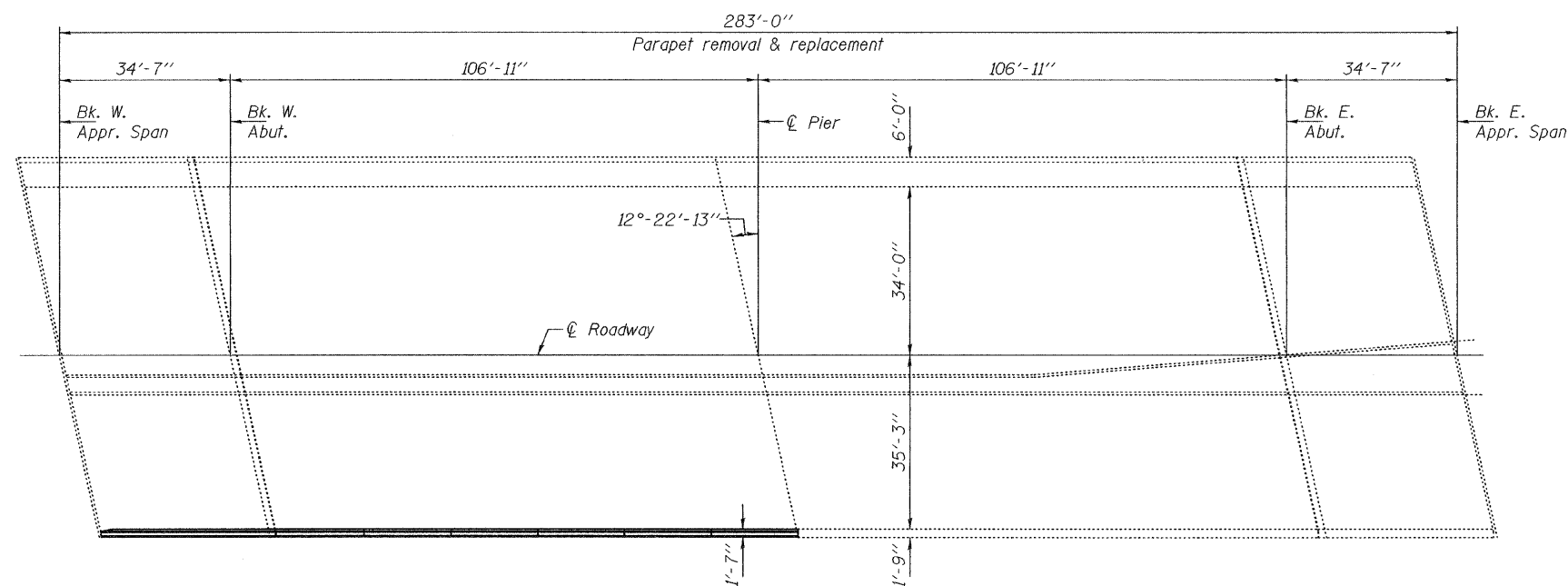
Reinforcement bars designated (E) shall be epoxy coated. Plan dimensions and details relative to existing plans are subject to routine variations. The Contractor shall field verify existing dimensions and details affecting new construction and make necessary approved adjustments prior to construction or ordering of materials. Such variations shall not be cause for additional compensation for a change in scope of the work, however, the Contractor will be paid for the quantity actually furnished based upon the unit price bid for the work.

Existing reinforcement bars extending into the removal area shall be cleaned, straightened and incorporated into the new construction. Any reinforcement bars that are damaged during concrete removal shall be replaced with an approved bar splicer or anchorage system. Cost included with Concrete Removal.

* Aluminum handrail to be salvaged. See special provision Bridge Handrail Removal.



ELEVATION



PLAN

TOTAL BILL OF MATERIAL

ITEM	UNIT	TOTAL
Concrete Removal	Cu. Yd.	32.2
Concrete Superstructure	Cu. Yd.	36.8
Reinforcement Bars, Epoxy Coated	Pound	5410
Bridge Handrail Removal	Foot	262
Protective Coat	Sq. Yd.	118.2

DESIGN STRESSES

FIELD UNITS
f'c = 3,500 psi
fy = 60,000 psi (Reinforcement)

DESIGNED	Victor A. Veliz
CHECKED	[Signature]
DRAWN	baliva
CHECKED	VHV AJB

EXAMINED	[Signature]	MARCH 4, 2008
PASSED	[Signature]	



EXPIRES 11-30-2008

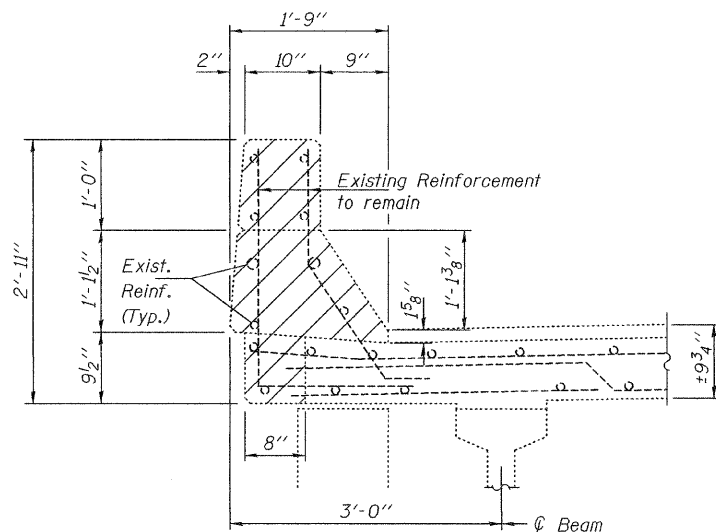
PLAN AND ELEVATION
IL 53 (BIESTERFIELD ROAD)
OVER I 290
COOK COUNTY
SN 016-0960

STATE OF ILLINOIS
DEPARTMENT OF TRANSPORTATION

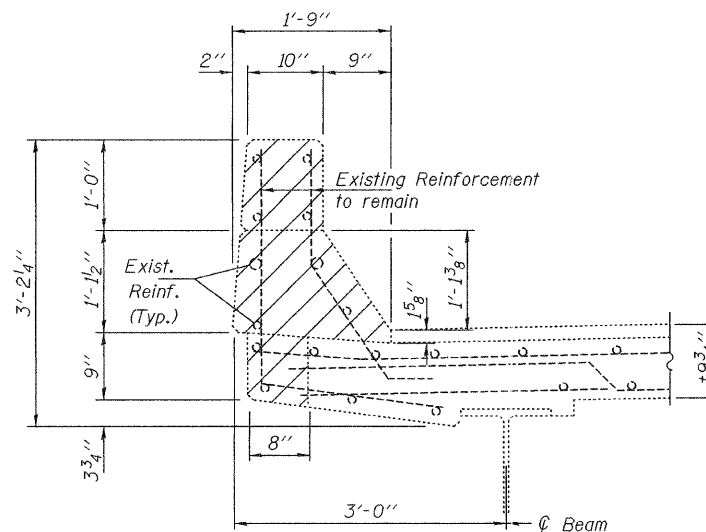
ROUTE NO.	SECTION	COUNTY	TOTAL SHEETS	SHEET NO.
I 290		COOK	12	6
FED. ROAD DIST. NO. 7	ILLINOIS	FED. AID PROJECT		

SHEET NO. 2
3 SHEETS

Contract Number: 60C44

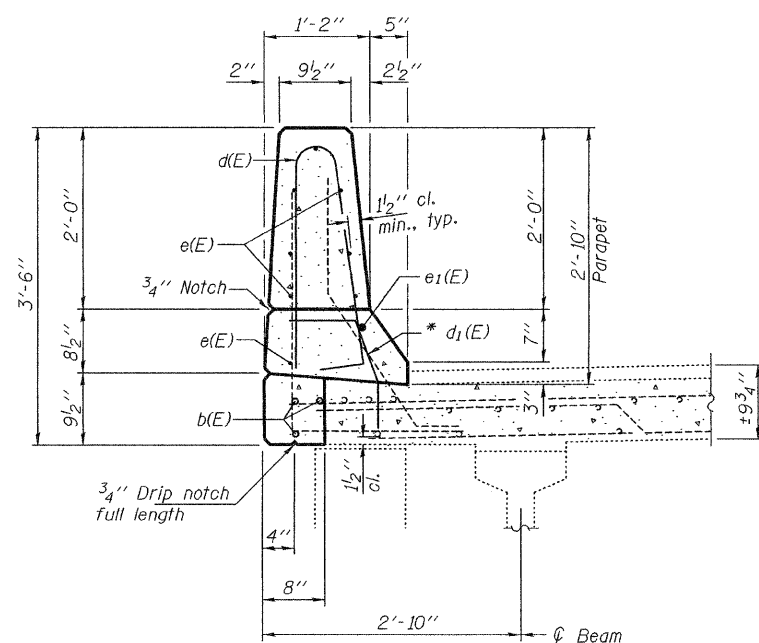


SECTION THRU EXISTING PARAPET
(Showing removal at approaches)

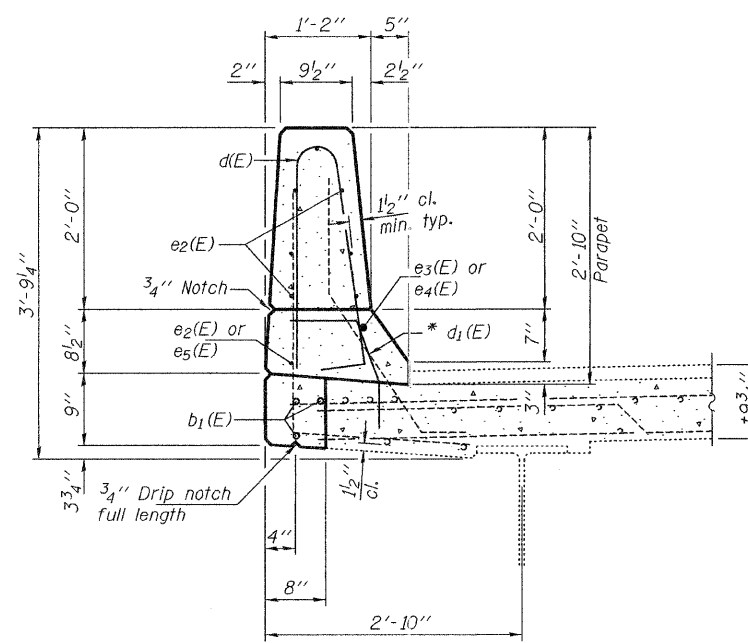


SECTION THRU EXISTING PARAPET
(Showing removal at main span)

Hatched areas indicate concrete removal.



SECTION THRU PROPOSED PARAPET
(At approaches)



SECTION THRU PROPOSED PARAPET
(At main span)

* Epoxy grout bars in 6" min. holes according to Article 584 of the Standard Specifications.

DESIGNED	VHV
CHECKED	AJB
DRAWN	baliva
CHECKED	VHV AJB

MARCH 4, 2008
EXAMINED *Carl P. ...*
ENGINEER OF STRUCTURAL SERVICES
PASSED *Ralph E. Anderson*
ENGINEER OF BRIDGES AND STRUCTURES

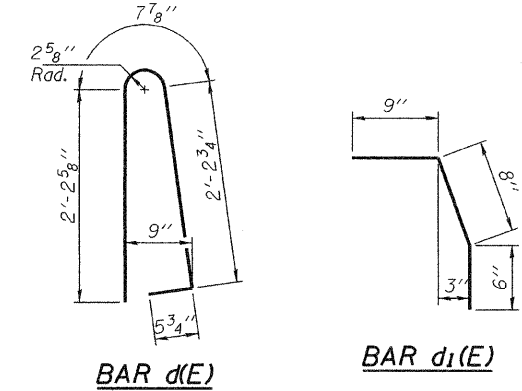
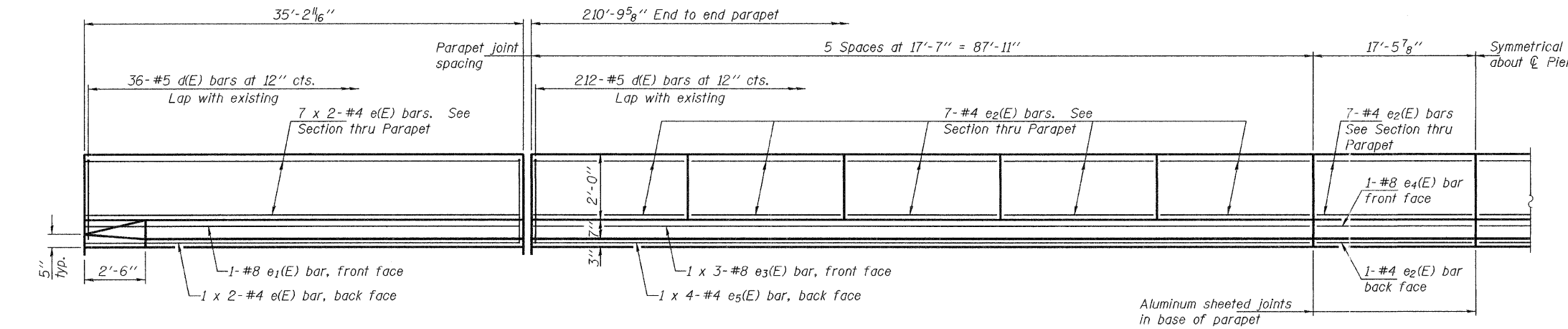
REPAIR DETAILS
IL 53 (BIESTERFIELD ROAD)
OVER I 290
COOK COUNTY
SN 016-0960

STATE OF ILLINOIS
DEPARTMENT OF TRANSPORTATION

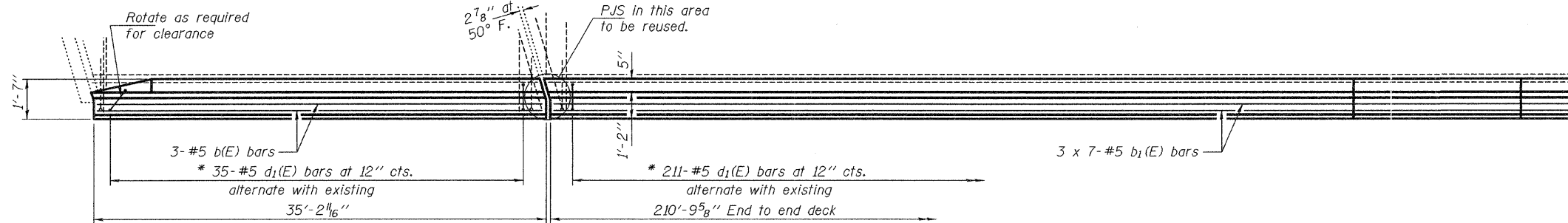
ROUTE NO.	SECTION	COUNTY	TOTAL SHEETS	SHEET NO.
I 290		COOK	12	7
FED. ROAD DIST. NO. 7	ILLINOIS	FED. AID PROJECT		

SHEET NO. 3
3 SHEETS

Contract Number: 60C44



INSIDE ELEVATION OF PARAPET



PLAN

PLAN AT CURB

* Epoxy grout bars in 6" min. holes according to Article 584 of the Standard Specifications.

MINIMUM BAR LAP

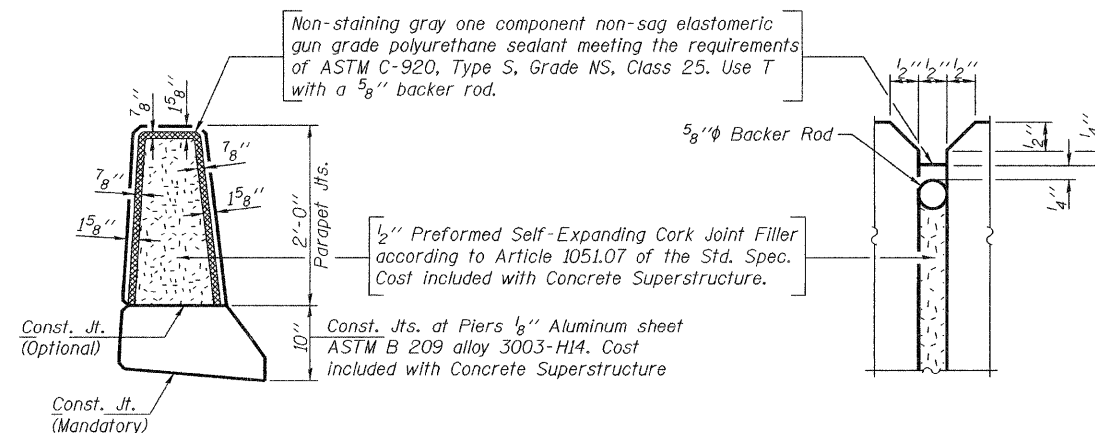
- #4 bar = 1'-4"
- #5 bar = 1'-8"
- #8 bar = 3'-5"

Notes:
See Sheet 2 of 3 for parapet details.

BILL OF MATERIAL

Bar	No.	Size	Length	Shape
b(E)	6	#5	34'-11"	—
b1(E)	21	#5	31'-7"	—
d(E)	284	#5	5'-7"	D
d1(E)	281	#5	1'-11"	7
e(E)	32	#4	18'-2"	—
e1(E)	2	#8	35'-0"	—
e2(E)	86	#4	17'-3"	—
e3(E)	6	#8	31'-8"	—
e4(E)	2	#8	17'-3"	—
e5(E)	8	#4	23'-1"	—
Reinforcement Bars, Epoxy Coated			Pound	5410
Concrete Superstructure			Cu. Yds.	36.8

Bars indicated thus 1 x 3-#8 etc. indicates 1 line of bars with 3 lengths per line.

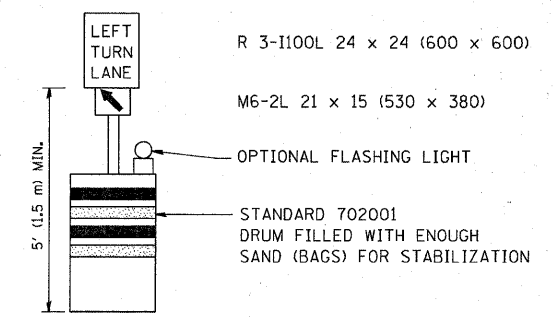
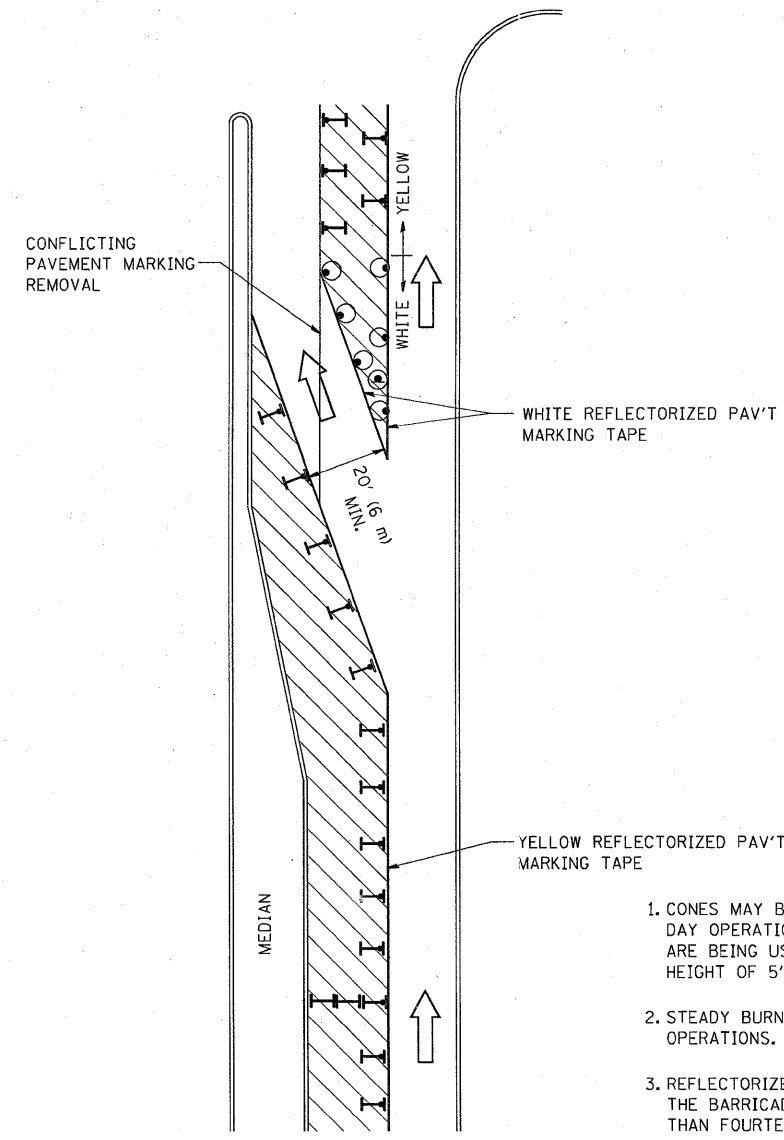


PARAPET JOINT DETAILS

DESIGNED	VHV
CHECKED	AJB
DRAWN	ballva
CHECKED	VHV AJB

MARCH 4, 2008
EXAMINED *Carl Perry*
ENGINEER OF STRUCTURAL SERVICES
PASSED *Ralph E. Anderson*
ENGINEER OF BRIDGES AND STRUCTURES

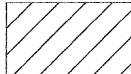
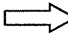



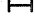
REPAIR DETAILS
IL 53 (BIESTERFIELD ROAD)
OVER I 290
COOK COUNTY
SN 016-0960



GENERAL NOTES

1. CONES MAY BE SUBSTITUTED FOR BARRICADES OR DRUMS AT HALF THE SPACING DURING DAY OPERATIONS. CONES SHALL BE A MINIMUM OF 28 (710) IN HEIGHT. WHEN CONES ARE BEING USED, THE "LEFT TURN LANE" SIGN MAY BE SKID MOUNTED AT A MINIMUM HEIGHT OF 5' (1.5 m).
2. STEADY BURNING LIGHTS WILL NOT BE REQUIRED ON BARRICADES OR DRUMS FOR DAY OPERATIONS. ALL LIGHTS SHALL BE MONODIRECTIONAL.
3. REFLECTORIZED TEMPORARY PAVEMENT MARKING TAPE SHALL BE PLACED THROUGHOUT THE BARRICADED AREA OF EACH TURN BAY WHERE THE CLOSURE TIME IS GREATER THAN FOURTEEN DAYS.
4. THIS APPLICATION ALSO APPLIES WHEN WORK IS BEING PERFORMED IN THE RIGHT LANE(S) AND THE RIGHT TURN BAY IS TO REMAIN OPEN. UNDER THIS CONDITION, "RIGHT TURN LANE" R3-100 24 x 24 (600 x 600) AND M6-2R 21 x 15 (530 x 380) SHALL BE USED.
5. THESE CONTROLS SHALL SUPPLEMENT MAINLINE TRAFFIC CONTROL FOR LANE CLOSURES.
6. LONGITUDINAL DIMENSIONS MAY BE ADJUSTED TO FIT FIELD CONDITIONS.
7. FORM BT 725 IS REQUIRED.
8. TRAFFIC CONTROL AND PROTECTION AT TURN BAYS (TO REMAIN OPEN TO TRAFFIC) SHALL BE INCLUDED IN THE COST SPECIFIED TRAFFIC CONTROL STANDARDS OR ITEMS.

LEGEND

-  WORK AREA
-  LANE OPEN TO TRAFFIC
-  TYPE I OR II BARRICADE WITH STEADY BURN LIGHT
-  DRUM WITH STEADY BURN LIGHT
-  DRUM WITH SIGN (WITH OPTIONAL FLASHING LIGHT) SEE DETAIL
-  TYPE I OR II CHECK BARRICADE WITH FLASHING LIGHT

All dimensions are in inches (millimeters) unless otherwise shown.

FILE NAME = W:\diststd\22x34\ts14.dgn	USER NAME = goglianobt	DESIGNED -	REVISED -T. RAMMACHER 09-08-94
		DRAWN -	REVISED - A. HOUSEH 11-07-95
	PLOT SCALE = 50.0000' / IN.	CHECKED -	REVISED - A. HOUSEH 10-12-96
	PLOT DATE = 1/4/2008	DATE -	REVISED -T. RAMMACHER 01-06-00

**STATE OF ILLINOIS
DEPARTMENT OF TRANSPORTATION**

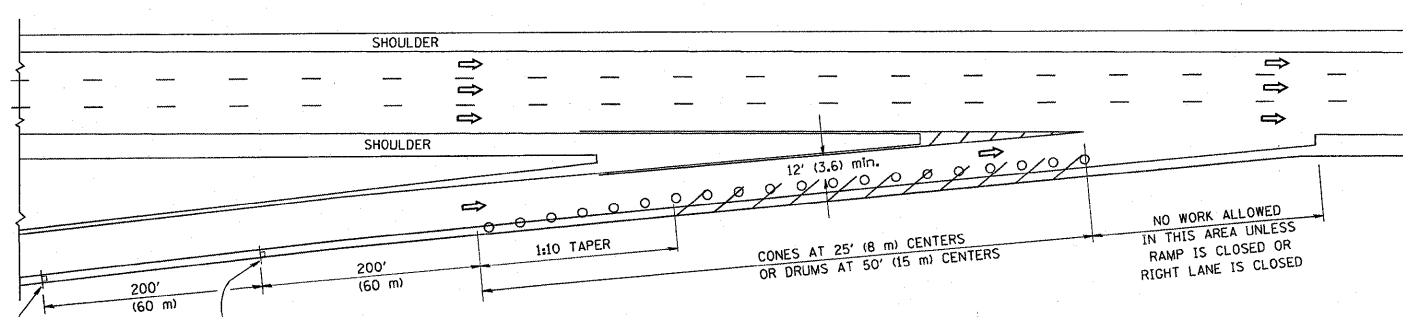
**TRAFFIC CONTROL AND PROTECTION AT TURN BAYS
(TO REMAIN OPEN TO TRAFFIC)**

F.A.M. RTE. 1339	SECTION 0101-311-HB-I	COUNTY Cook	TOTAL SHEETS 12	SHEET NO. 8
TC-14			CONTRACT NO. 60044	
FED. ROAD DIST. NO. 1 ILLINOIS FED. AID PROJECT				

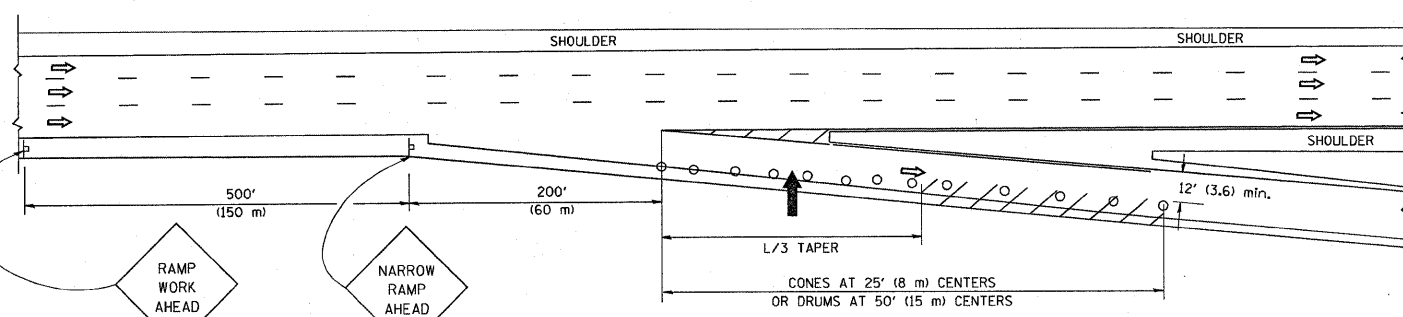
SCALE: NONE SHEET NO. 1 OF 1 SHEETS STA. TO STA.

PARTIAL RAMP CLOSURE DETAILS

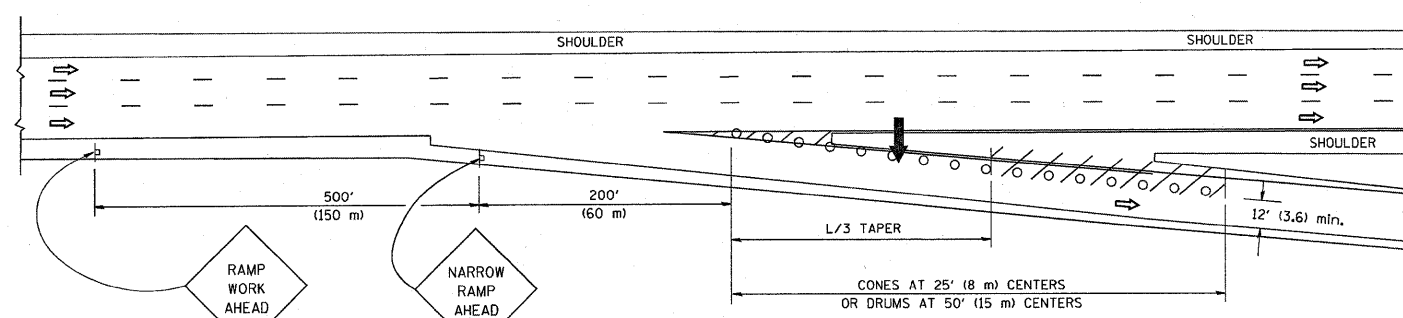
SHOULDER CLOSURE DETAILS



TYPICAL ENTRANCE RAMP



TYPICAL EXIT RAMP



TYPICAL EXIT RAMP

SYMBOLS

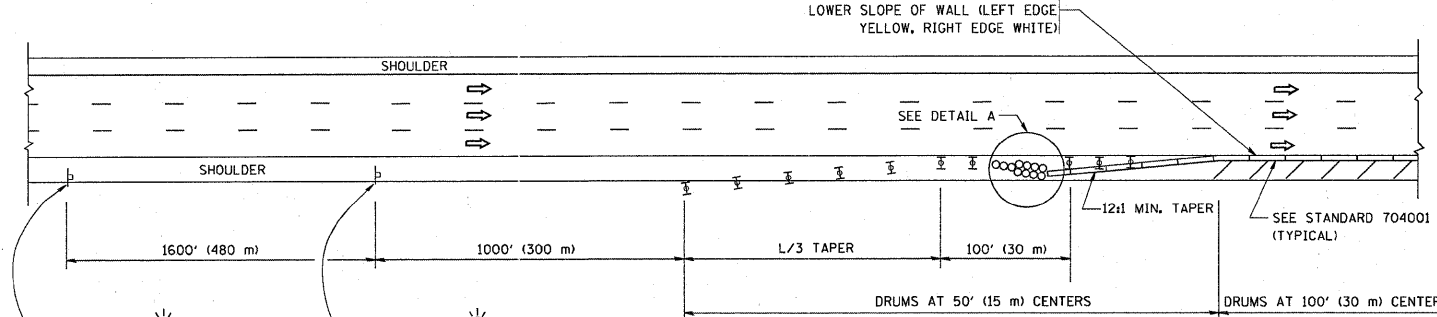
- ARROWBOARD
- WORK AREA
- SIGN ON PORTABLE OR PERMANENT SUPPORT
- FLAGGER WITH CONTROL SIGN
- TYPE II BARRICADE, DRUM OR VERTICAL BARRICADE WITH STEADY BURN MONO-DIRECTIONAL LIGHT
- CONE, DRUM OR BARRICADE

GENERAL NOTES

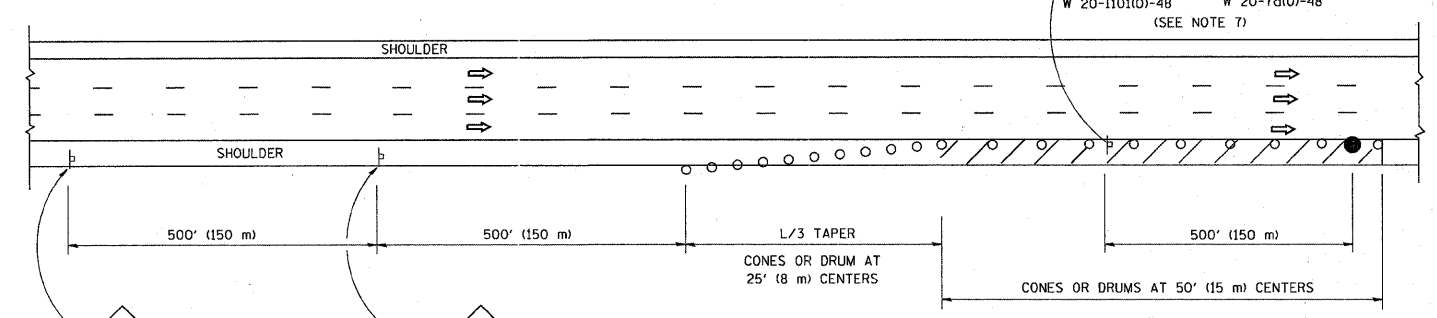
1. THE "L" DISTANCE EQUALS:

SPEED LIMIT	METRIC	ENGLISH
45 mph (80 km/h) OR GREATER	$L=0.65(W)(S)$	$L=(W)(S)$

W = WIDTH OF OFFSET IN FEET (METERS)
S = NORMAL POSTED SPEED MPH (KM/H)
2. PLASTIC DRUMS WITH HIGH PERFORMANCE REFLECTIVE SHEETING AND STEADY BURNING LIGHTS ARE REQUIRED FOR ALL NIGHTTIME CLOSURES.
3. ALL SIGNS SHALL BE POST MOUNTED IF THE CLOSURE TIME EXCEEDS FOUR DAYS.
4. FLASHING LIGHTS SHALL BE USED DURING THE HOURS OF DARKNESS AND SHALL BE INSTALLED ABOVE THE FIRST TWO SETS OF SIGNS.



PERMANENT SHOULDER CLOSURE



DAYTIME SHOULDER CLOSURE

THIS DETAIL IS USED WHERE:
1. VEHICLES, EQUIPMENT, WORKERS OR THEIR ACTIVITIES ENCRUCH IN AN AREA CLOSER THAN 15' (4.5 m) TO THE EDGE OF PAVEMENT FOR A PERIOD IN EXCESS OF 15 MINUTES.

ARRAY DESIGN PER MANUFACTURER TO BE NCHRP 350 COMPLIANT FOR POSTED SPEED.

DETAIL "A"
IMPACT ATTENUATOR, TEMPORARY
(SEE NOTE 5)

ALL DIMENSIONS ARE IN INCHES (MILLIMETERS) UNLESS OTHERWISE SHOWN.

FILE NAME = W:\diststd\22x34\tcl7.dgn

USER NAME = gegljanobt	DESIGNED -	REVISED - J.A.F. 12-02
PLOT SCALE = 50.0000' / IN.	DRAWN - D.W.S.	REVISED - 04-03
PLOT DATE = 1/4/2008	CHECKED -	REVISED - J.A.F. 12-06
	DATE - 11-96	REVISED - S.P.B. 01-07

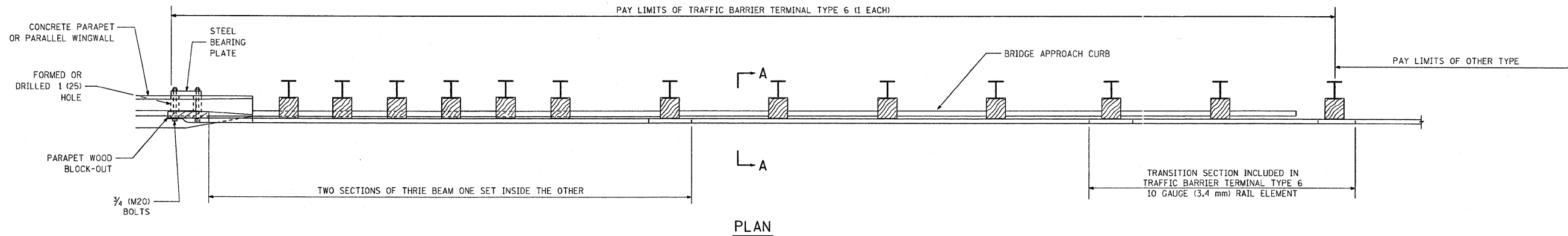
STATE OF ILLINOIS
DEPARTMENT OF TRANSPORTATION

TRAFFIC CONTROL DETAILS FOR FREEWAY
SHOULDER CLOSURES AND PARTIAL RAMP CLOSURES

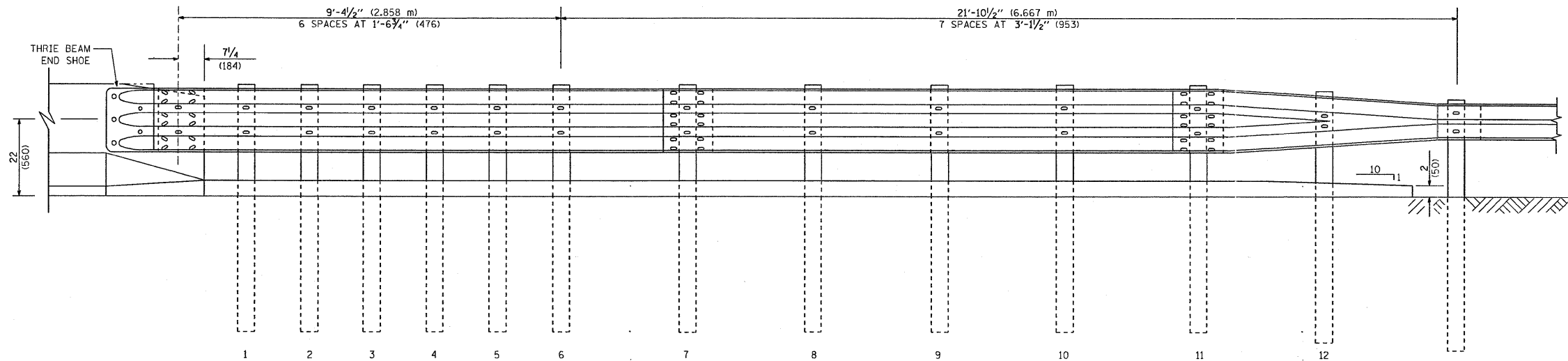
SCALE: NONE SHEET NO. 1 OF 1 SHEETS STA. TO STA.

F.A.U. RTE.	SECTION	COUNTY	TOTAL SHEETS	SHEET NO.
1339	0101-311 HB-I	COOK	12	9
TC-17			CONTRACT NO. 60c44	
FED. ROAD DIST. NO. 1 ILLINOIS FED. AID PROJECT				

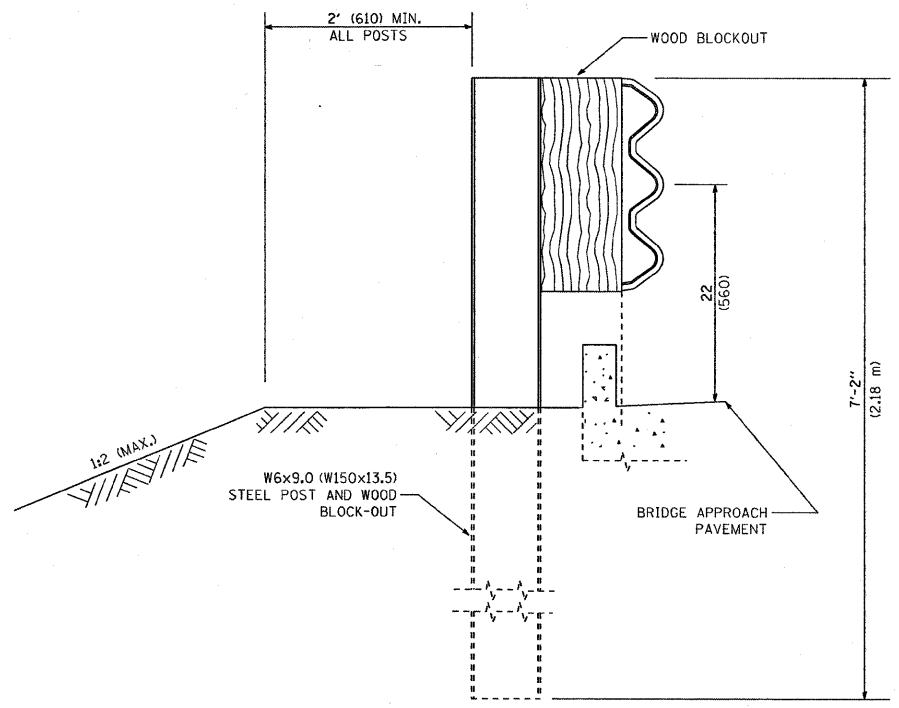
PARAPET OR WINGWALL



PLAN



ELEVATION



SECTION A-A

GENERAL NOTES

- TO BE USED WHEN CONNECTING TO EXISTING GUARD RAILING PRIOR TO THE MIDWEST GUARDRAIL SYSTEM.
- SEE STANDARD 630001 FOR DETAILS OF GUARDRAIL NOT SHOWN.
- THRIE BEAM RAIL SHALL BE BOLTED TO BLOCK-OUT AT ALL POSTS.
- SEE STANDARD 420401 FOR DETAILS OF BRIDGE APPROACH PAVEMENT.
- ALL SLOPE RATIOS ARE EXPRESSED AS UNITS OF VERTICAL DISPLACEMENT TO UNITS OF HORIZONTAL DISPLACEMENT (V:H).
- ALL DIMENSIONS ARE IN INCHES (MILLIMETERS) UNLESS OTHERWISE SHOWN.

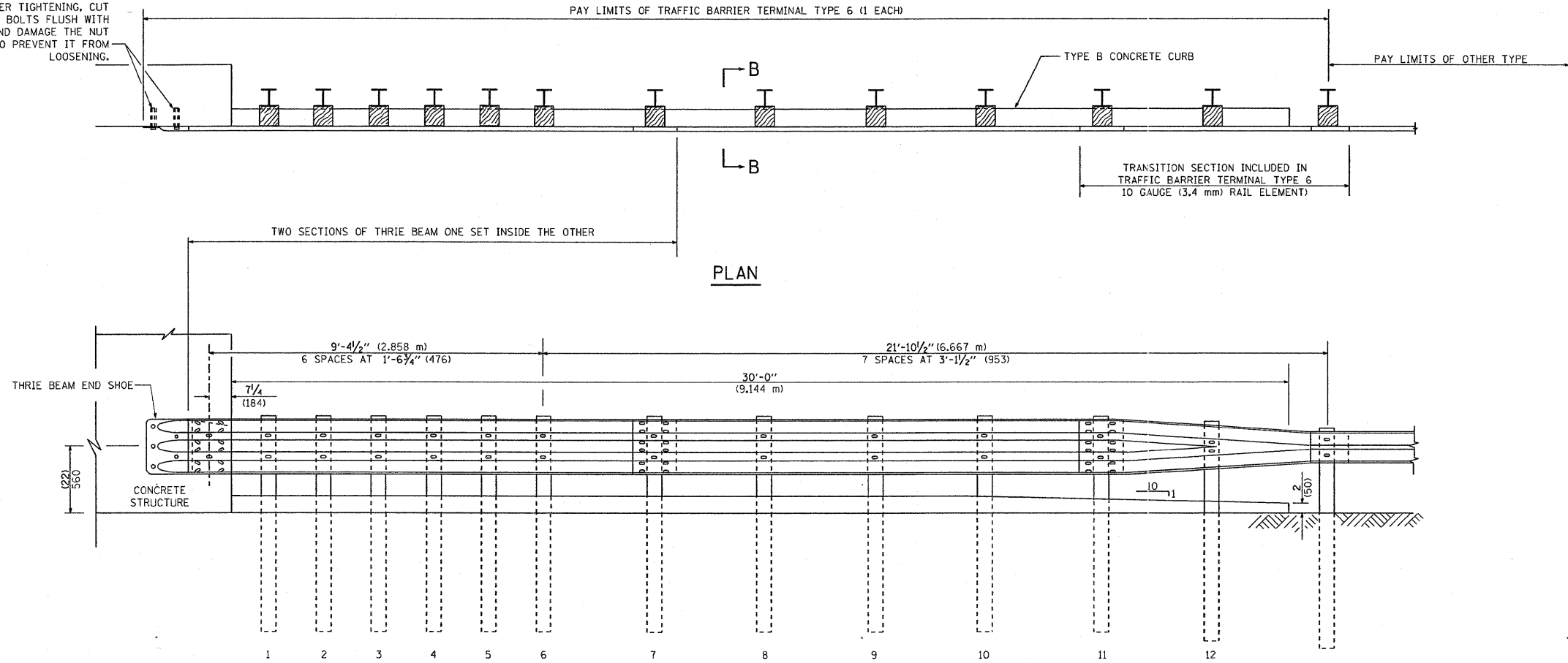
FILE NAME = c:\Projects\dststd2007\bm22.dgn	USER NAME = bauerd1	DESIGNED - DRAWN -	REVISED - STATE STANDARD: 631031-05 - 02/19/2008	STATE OF ILLINOIS DEPARTMENT OF TRANSPORTATION	TYPE 6 TERMINAL FOR USE WITH 21" HIGH SPBGR		F.A.J. RTE.	SECTION	COUNTY	TOTAL SHEETS	SHEET NO.		
PLOT SCALE = 50.0000 / IN.	CHECKED -	REVISED -			SCALE: NONE	SHEET NO. 1 OF 3 SHEETS	STA.	TO STA.	1339	0101-311 HB-I	COOK	12	10
PLOT DATE = 2/21/2008	DATE -	REVISED -							BM 22		CONTRACT NO. 60C44		
							FED. ROAD DIST. NO. 1 ILLINOIS FED. AID PROJECT						

OTHER CONCRETE STRUCTURE

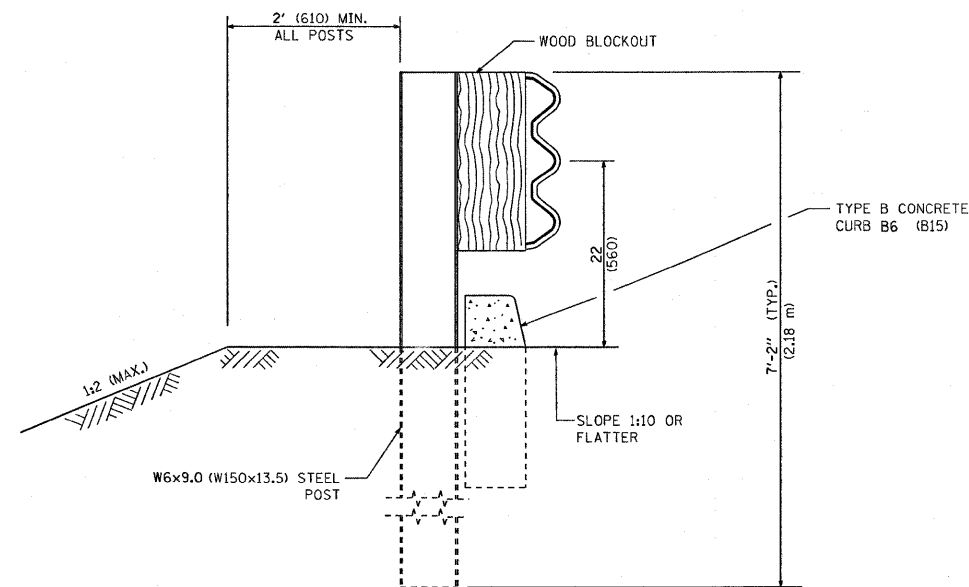
5 EPOXY GROUTED $\frac{3}{4}$ " (M20) ANCHOR BOLTS WITH STANDARD WASHERS. AFTER TIGHTENING, CUT THE ANCHOR BOLTS FLUSH WITH NUTS, AND DAMAGE THE NUT TO PREVENT IT FROM LOOSENING.

PAY LIMITS OF TRAFFIC BARRIER TERMINAL TYPE 6 (1 EACH)

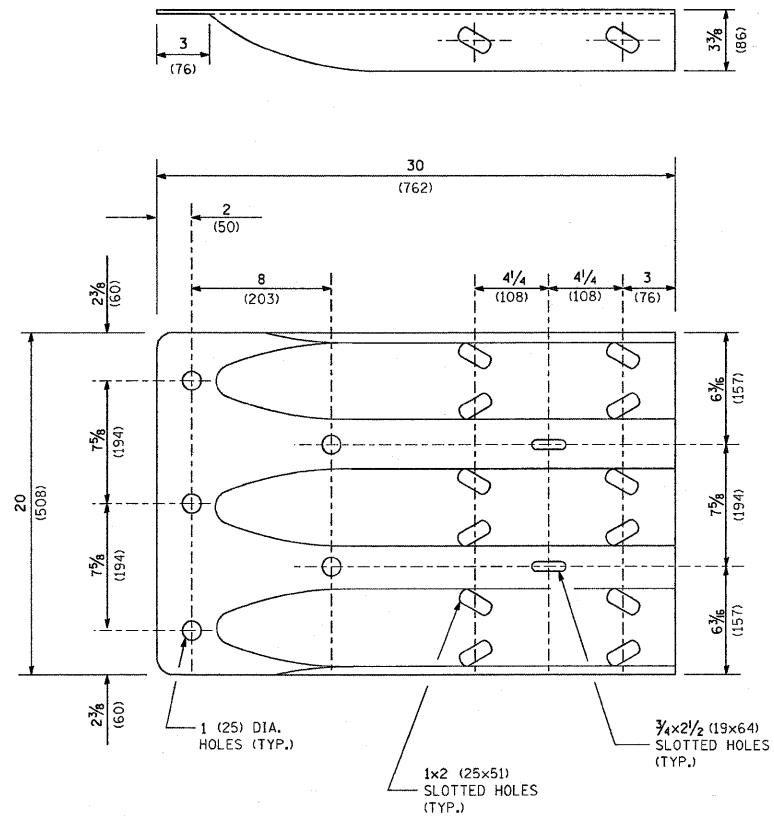
PAY LIMITS OF OTHER TYPE



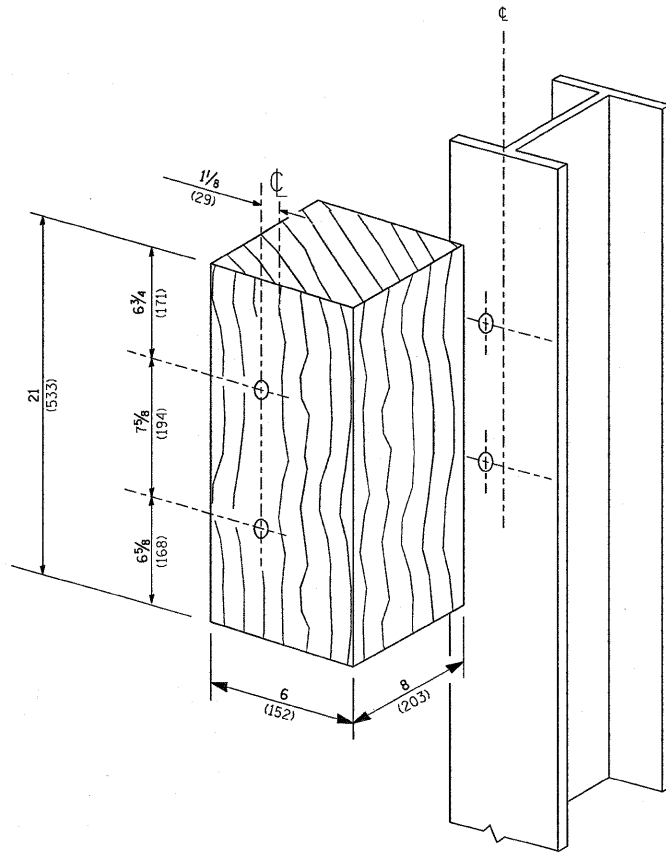
ELEVATION



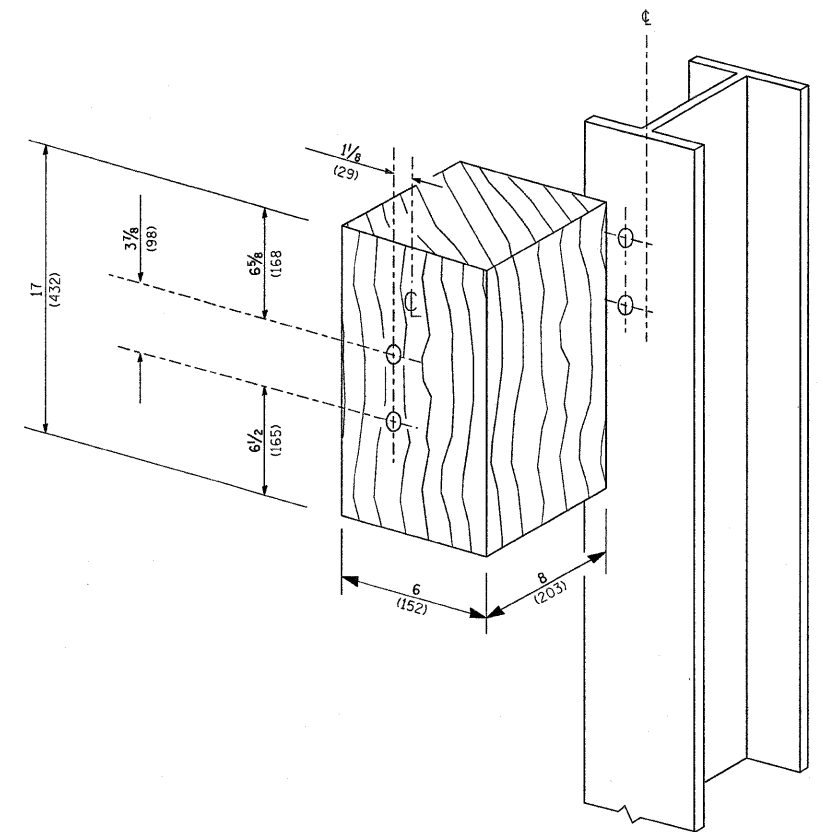
FILE NAME = c:\Projects\diststd2007\bn22.dgn	USER NAME = bauerdl	DESIGNED - DRAWN -	REVISED - STATE STANDARD: 631031-05 - 02/19/2008	STATE OF ILLINOIS DEPARTMENT OF TRANSPORTATION	TYPE 6 TERMINAL FOR USE WITH 21" HIGH SPBGR		F.A.U. RTE. 1339	SECTION 0101-311 HB-I	COUNTY Cook	TOTAL SHEETS 12	SHEET NO. 11
PLOT SCALE = 50.0000" / IN.	CHECKED -	REVISED -	REVISED -		SCALE: NONE	SHEET NO. 2 OF 3 SHEETS	STA.	TO STA.	CONTRACT NO. 60c44		FED. ROAD DIST. NO. 1 ILLINOIS FED. AID PROJECT
PLOT DATE = 2/21/2008	DATE -	REVISED -	REVISED -								



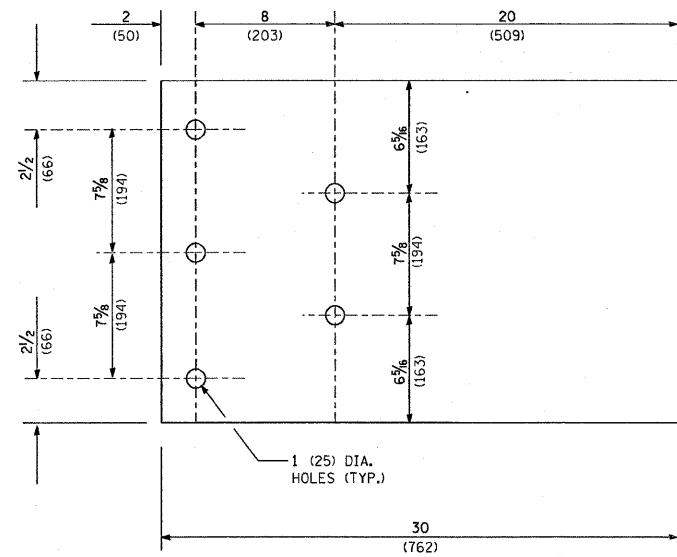
THRIE BEAM END SHOE DETAIL



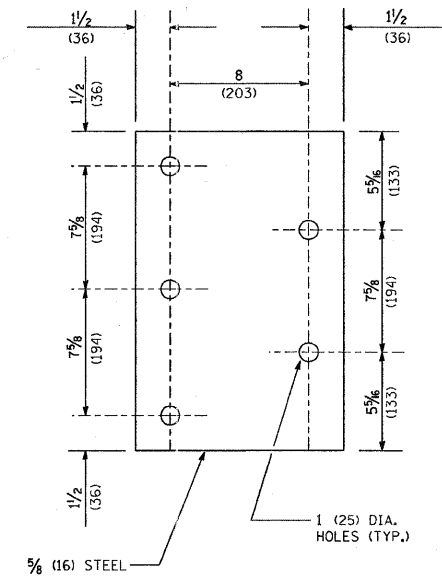
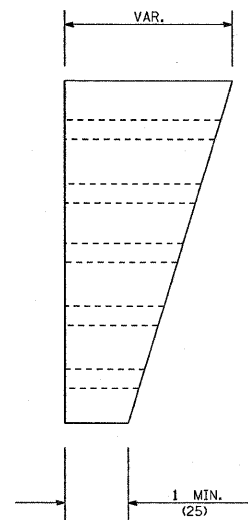
POSTS 1-11 WOOD BLOCKOUT DETAIL



POST 12 WOOD BLOCKOUT DETAIL



PARAPET WOOD BLOCK-OUT DETAIL



PARAPET STEEL BEARING PLATE DETAIL

65 EACH INDIVIDUAL 5x5x3/8 (125x125x16) STEEL PLATES WITH CENTERED 1 (25) HOLES MAY BE SUBSTITUTED FOR THE PLATE SHOWN.

FILE NAME = c:\Projects\diststd2007\bm22.dgn

USER NAME = bauerdl
 PLOT SCALE = 50.0000' / IN.
 PLOT DATE = 2/21/2008

DESIGNED -
 DRAWN -
 CHECKED -
 DATE -

REVISED - STATE STANDARD:
 631031-05 - 02/19/2008
 REVISED -
 REVISED -

STATE OF ILLINOIS
 DEPARTMENT OF TRANSPORTATION

TYPE 6 TERMINAL
 FOR USE WITH 21" HIGH SPBGR

SCALE: NONE SHEET NO. 3 OF 3 SHEETS STA. TO STA.

F.A.U. RTE. 1339	SECTION 0101-311 HB-I	COUNTY COOK	TOTAL SHEETS 12	SHEET NO. 12
BM 22		CONTRACT NO.		
FED. ROAD DIST. NO. 1 ILLINOIS FED. AID PROJECT				