

STATE OF ILLINOIS
DEPARTMENT OF TRANSPORTATION
DIVISION OF HIGHWAYS

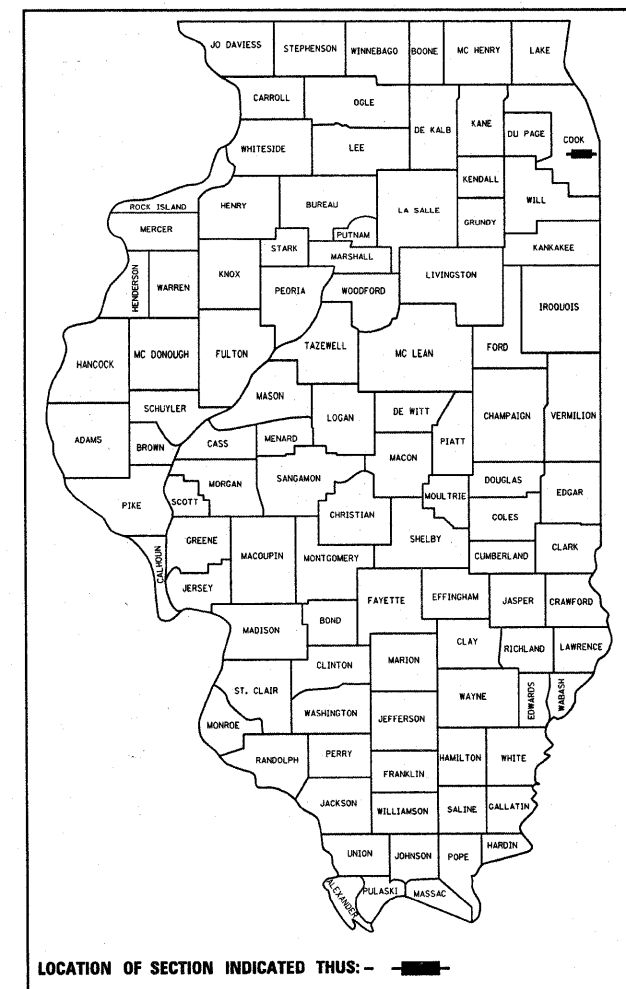
**PROPOSED
HIGHWAY PLANS**
F.A.U. ROUTE 1438: TAYLOR STREET
OVER FAI - 90/94 (DAN RYAN EXPY)
SECTION 2626.23 B-I
BRIDGE PARAPET & JOINT REPAIRS
COOK COUNTY
C-91-215-07

F.A.U. RTE.	SECTION	COUNTY	TOTAL SHEETS	SHEET NO.
1438	2626.23 B-I	COOK	12	1
FED. ROAD DIST. NO.		ILLINOIS	CONTRACT NO. 60C46	

FOR INDEX OF SHEETS, SEE SHEET NO. 2

THE IMPROVEMENT IS LOCATED IN THE CITY OF CHICAGO

D-91-215-07



LOCATION OF SECTION INDICATED THUS: -



TRAFFIC DATA

I - 90/94 (DAN RYAN EXPY)
2006 ADT = 233,000
SPEED LIMIT = 45 MPH
TAYLOR STREET
2006 ADT = 8,800
SPEED LIMIT = 30 MPH

IMPROVEMENT LOCATION
SN 016-1165 & SN 016-2535

C.U.A.N.: CHICAGO UTILITY
ALERT NETWORK
(312) 774 - 7000

PROJECT ENGINEER ROBERT BORO (847) 705 - 4178
PROJECT MANAGER KEN ENG

CONTRACT NO. 60C46

CHICAGO TOWNSHIP

STATE OF ILLINOIS
DEPARTMENT OF TRANSPORTATION
DIVISION OF HIGHWAYS
SUBMITTED MARCH 7, 2008
Diane M. O'Keefe DEPUTY DIRECTOR OF HIGHWAYS, REGION ENGINEER
March 21, 2008
Eric E. Harrel INTERIM ENGINEER OF DESIGN AND ENVIRONMENT
March 21, 2008
Christine M. Reed DIRECTOR OF HIGHWAYS, CHIEF ENGINEER

PRINTED BY THE AUTHORITY
OF THE STATE OF ILLINOIS

INDEX OF SHEETS

SHEET NO.	DESCRIPTION
1	COVER SHEET
2	INDEX OF SHEETS, STATE STANDARDS AND GENERAL NOTES
3	SUMMARY OF QUANTITIES
4 - 7	BRIDGE REPAIR PLANS
8	TRAFFIC DETOUR DETAILS
9	ENTRANCE RAMP AND CLOSURE DETAILS (TC-08)
10	SINGLE AND MULTI-LANE WEAVE (TC-09)
11	TRAFFIC CONTROL AND PROTECTION FOR SIDE ROADS, INTERSECTION AND DRIVEWAYS (TC-10)
12	TRAFFIC CONTROL FOR SHOULDER CLOSURES AND PARTIAL RAMP CLOSURES (TC-17)

LIST OF STATE STANDARDS

STANDARD NO.	DESCRIPTION
701301-02	LANE CLOSURE, 2L, 2W, SHORT TIME OPERATIONS
701400-02	APPROACH TO LANE CLOSURE, FREEWAY / EXPRESSWAY
701401-04	LANE CLOSURE, FREEWAY / EXPRESSWAY
701411-04	LANE CLOSURE, MULTILANE, AT ENTRANCE OR EXIT RAMP, FOR SPEEDS ≥ 45 MPH
701426-02	LANE CLOSURE, MULTILANE, INTERMITTENT OR MOVING OPER., FOR SPEEDS ≥ 45 MPH
701606-05	URBAN LANE CLOSURE, MULTILANE, 2W WITH MOUNTABLE MEDIAN
701801-03	LANE CLOSURE, MULTILANE, 1W OR 2W CROSSWALK OR SIDEWALK CLOSURE
701901	TRAFFIC CONTROL DEVICES

GENERAL NOTES

THE CONTRACTOR WILL NOT BE ALLOWED TO SET UP A YARD OR FIELD OFFICE ON STATE PROPERTY WITHOUT WRITTEN PERMISSION FROM THE DEPARTMENT

WHEN ARTIFICIAL LIGHTING IS UTILIZED IN NIGHT OPERATIONS, THE CONTRACTOR SHALL EXERCISE THE UTMOST PRECAUTIONS IN PREVENTING ADVERSE VISIBILITY TO THE MOTORING PUBLIC AND ADJOINING RESIDENTIAL AREAS.

ALL DAMAGE TO EXISTING PAVEMENT MARKINGS OR RAISED REFLECTIVE PAVEMENT MARKERS OUTSIDE THE REMOVAL LINE SHOWN ON THE PLANS SHALL BE REPLACED AT NO ADDITIONAL COST TO THE DEPARTMENT.

IT SHALL BE THE CONTRACTOR'S RESPONSIBILITY TO VERIFY ALL DIMENSIONS AND CONDITIONS EXISTING IN THE FIELD PRIOR TO CONSTRUCTION AND ORDERING OF MATERIALS.

THE CONTRACTOR SHALL CONTACT THE DISTRICT ONE TRAFFIC CONTROL SUPERVISOR AT (847)705-4470 FOR ARTERIALS AND (847) 705-4151, FOR EXPRESSWAYS A MINIMUM OF 72 HOURS IN ADVANCE OF BEGINNING WORK.

THE CONTRACTOR SHALL BE REQUIRED TO PROVIDE ACCESS TO ABUTTING PROPERTY AT ALL TIMES DURING THE CONSTRUCTION OF THIS PROJECT.

THE CONTRACTOR SHALL BE RESPONSIBLE FOR THE NOTIFICATION OF ALL EMERGENCY SERVICES, SCHOOL DISTRICTS, I.D.O.T.'S COMMUNICATIONS CENTER, SPRINGFIELD TRUCK PERMIT SECTION AND OTHER AGENCIES AFFECTED BY THE CLOSURE. THE CONTRACTOR SHALL ALSO BE RESPONSIBLE FOR POSTING SIGNS THAT WILL INDICATE THE DATES THE CLOSURE WILL BE IN PLACE.

DO NOT SCALE PLANS FOR CONSTRUCTION DIMENSIONS.

THE "ADVANCED WARNING SIGN DETAIL FOR ARTERIAL TRAFFIC" LOCATED IN THE SPECIAL PROVISION FOR "TEMPORARY INFORMATION SIGNING FOR LANE CLOSURES" IS APPLICABLE ONLY TO ARTERIAL ROADS AND SHALL NOT BE APPLIED TO EXPRESSWAYS.

BEFORE STARTING ANY EXCAVATION, THE CONTRACTOR SHALL CALL "C.U.A.N." (CHICAGO UTILITY ALERT NETWORK) AT (312)744-7000 FOR FIELD LOCATIONS OF BURIED ELECTRIC, TELEPHONE AND GAS UTILITIES. (48 HOUR NOTIFICATION IS REQUIRED).

THE CONTRACTOR SHALL COORDINATE CONSTRUCTION ACTIVITIES WITH UTILITY COMPANIES AND THE CITY OF CHICAGO.

THE CONTRACTOR SHALL TAKE NECESSARY PRECAUTIONS TO INSURE THAT NO DEBRIS WILL ENDANGER OR INTERFERE WITH TRAFFIC ON THE ROADWAY BENEATH THE BRIDGE ACCORDING TO ARTICLE 107.09 OF THE STANDARD SPECIFICATIONS. THIS WORK WILL NOT BE PAID FOR SEPERATELY, BUT SHALL BE INCLUDED IN THE CONTRACT UNIT PRICE FOR CONCRETE REMOVAL.

CONCRETE SUPERSTRUCTURE SHALL HAVE A SEVEN DAY MINIMUM CURE.

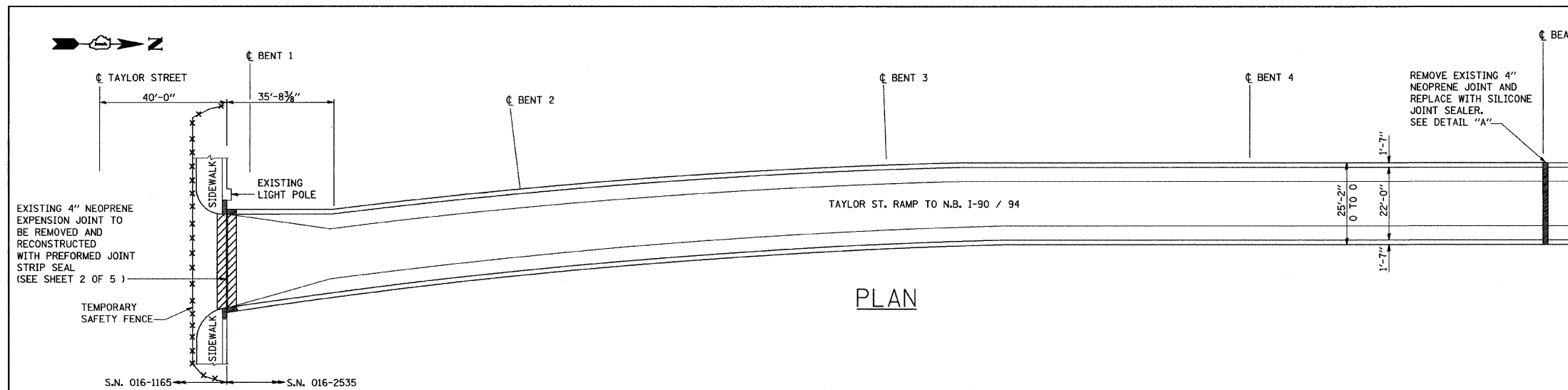
FILE NAME = c:\projects\struct1\815-1165.dgn	USER NAME = tntakosmv	DESIGNED -	REVISED -	STATE OF ILLINOIS DEPARTMENT OF TRANSPORTATION	TAYLOR STREET OVER I-90 / 94 INDEX OF SHEETS, STATE STANDARDS AND GENERAL NOTES S.N. 016-1165 AND S.N. 016-2535			F.A.J. RTE. 1438	SECTION 2626.23 B-1	COUNTY COOK	TOTAL SHEETS 12	TOTAL SHEET NO. 2
PLOT SCALE = 50.0000' / IN.	CHECKED -	REVISED -	REVISED -		SCALE: NONE	SHEET NO.	OF	SHEETS	STA.	TO STA.	FED. ROAD DIST. NO. 1 ILLINOIS FED. AID PROJECT	
PLOT DATE = 3/10/2008	DATE -	REVISED -	REVISED -		CONTRACT NO. 60C46							
Rev.												

SUMMARY OF QUANTITIES			URBAN 100% STATE	CONSTRUCTION TYPE CODE SFTY-2A					SUMMARY OF QUANTITIES			CONSTRUCTION TYPE CODE							
CODE NO	ITEM	UNIT	TOTAL QUANTITIES	SN 016-2535 RAMP	SN 016-1165 TAYLOR ST.					CODE NO	ITEM	UNIT	TOTAL QUANTITIES						
50102400	CONCRETE REMOVAL	CU YD	6.3	3.1	3.2														
50300255	CONCRETE SUPERSTRUCTURE	CU YD	6.4	3.2	3.2														
50800205	REINFORCEMENT BARS, EPOXY COATED	POUND	980	490	490														
50900905	REMOVING AND RE-ERECTING EXISTING RAILING	FOOT	30		30														
52000110	PREFORMED JOINT STRIP SEAL	FOOT	35.7	17.8	17.9														
66411900	TEMPORARY FENCE	FOOT	80		80														
67000400	ENGINEER'S FIELD OFFICE, TYPE A	CAL MO	3	1.5	1.5														
67100100	MOBILIZATION	L SUM	1	0.5	0.5														
70102630	TRAFFIC CONTROL AND PROTECTION, STANDARD 701601	L SUM	1		1														
70102640	TRAFFIC CONTROL AND PROTECTION, STANDARD 701801	L SUM	1		1														
X0320887	POLYMER CONCRETE	CU FT	3.12	3.12															
X0323077	SILICONE JOINT SEALER, 2 3/4"	FOOT	23	23															
X7011015	TRAFFIC CONTROL AND PROTECTION (EXPRESSWAYS)	L SUM	1	0.5	0.5														
XX005369	TRAFFIC CONTROL & PROTECTION FOR TEMPORARY DETOUR	L SUM	1	0.5	0.5														
70106800	CHANGEABLE MESSAGE SIGN	CAL MO	3		3														
X0322467	TEMPORARY INFORMATION SIGNING FOR LANE CLOSURE	SQ FT	72		72														

REVISIONS		ILLINOIS DEPARTMENT OF TRANSPORTATION	
NAME	DATE	SUMMARY OF QUANTITIES	
		TAYLOR STREET OVER I-90/94	
		S.N. 016-1165 AND S.N. 016-2535	

PLOT DATE: 3/10/2008

3/10/2008 8:58:03 AM C:\PROJECTS\STRUCT\016-1165.dgn



NOTES:

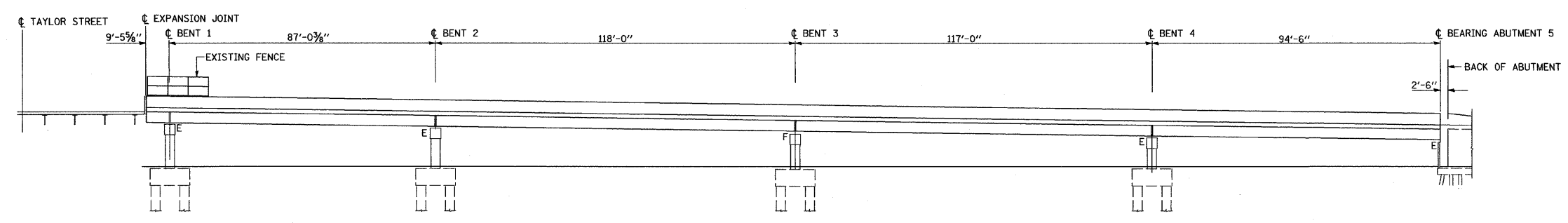
PLAN DIMENSIONS AND DETAILS RELATIVE TO EXISTING PLANS ARE SUBJECT TO ROUTINE VARIATIONS. THE CONTRACTOR SHALL FIELD VERIFY EXISTING DIMENSIONS AND DETAILS AFFECTING NEW CONSTRUCTION AND MAKE NECESSARY APPROVED ADJUSTMENTS PRIOR TO CONSTRUCTION OR ORDERING OF MATERIALS. SUCH VARIATIONS SHALL NOT BE CAUSE FOR ADDITIONAL COMPENSATION FOR A CHANGE IN SCOPE OF THE WORK, HOWEVER, THE CONTRACTOR WILL BE PAID FOR THE QUANTITY ACTUALLY FURNISHED BASED UPON THE UNIT PRICE BID FOR THE WORK.

REINFORCEMENT BARS SHALL CONFORM TO THE REQUIREMENTS OF ASTM A706 Gr 60 (IL MODIFIED). SEE SPECIAL PROVISIONS.

EXISTING REINFORCEMENT BARS EXTENDING INTO THE REMOVAL AREA SHALL BE CLEANED, STRAIGHTENED AND INCORPORATED INTO THE NEW CONSTRUCTION. ANY REINFORCEMENT BARS THAT ARE DAMAGED DURING CONCRETE REMOVAL SHALL BE REPLACED WITH APPROVED BAR SPLICER OR ANCHORAGE SYSTEM. COST INCLUDED WITH CONCRETE REMOVAL.

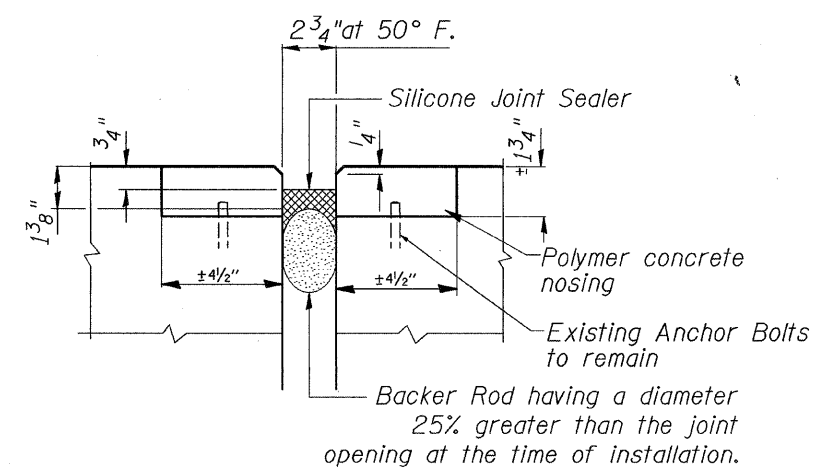
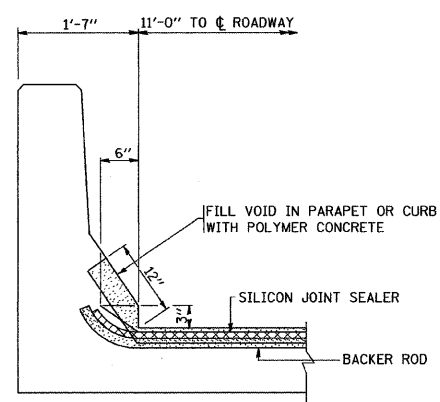
PRIOR TO POURING THE NEW CONCRETE DECK, ALL HEAVY OR LOOSE RUST, LOOSE MILL SCALE, AND OTHER LOOSE OR POTENTIALLY DETRIMENTAL FOREIGN MATERIAL SHALL BE REMOVED FROM THE SURFACES IN CONTACT WITH CONCRETE. TIGHTLY ADHERED PAINT MAY REMAIN UNLESS OTHERWISE NOTED. REMOVAL SHALL BE ACCOMPLISHED BY METHODS THAT WILL NOT DAMAGE THE STEEL AND THE COST WILL BE INCLUDED IN THE PAY ITEM COVERING REMOVAL OF THE EXISTING CONCRETE.

JOINT OPENINGS SHALL BE ADJUSTED ACCORDING TO ARTICLE 520.04 OF THE STD. SPECS. WHEN THE DECK IS POURED AT AN AMBIENT TEMPERATURE OTHER THAN 50 ° F.

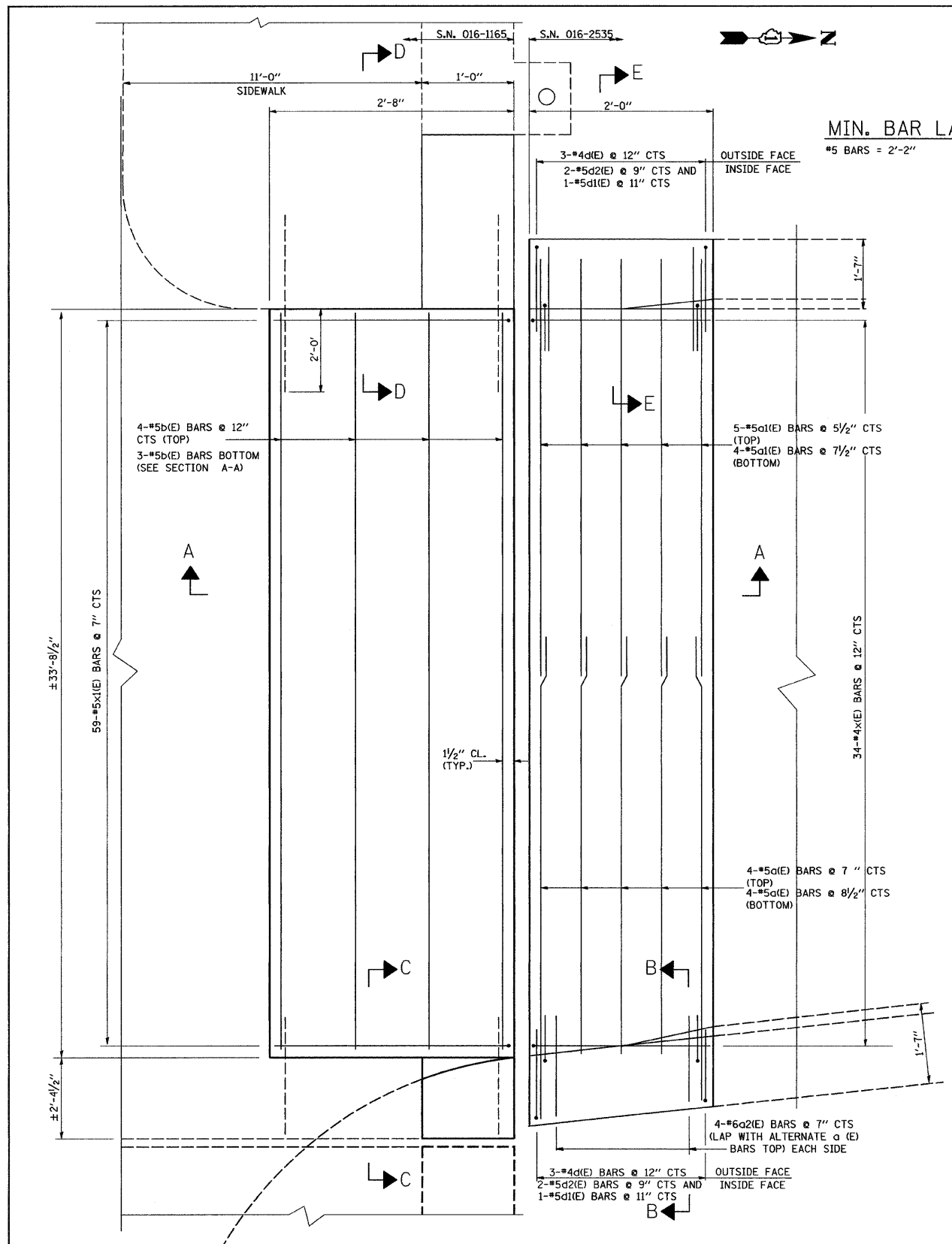


TOTAL BILL OF MATERIALS

DESCRIPTION	UNIT	QUANTITY
REINFORCEMENT BARS (EPOXY COATED)	POUND	980
CONCRETE SUPERSTRUCTURE	CU. YDS	6.4
CONCRETE REMOVAL	CU. YDS	6.3
SILICONE JOINT SEALER, 2 3/4"	FOOT	23
POLYMER CONCRETE	CU. FT.	3.12
PREFORMED JOINT STRIP SEAL	FOOT	35.7
REMOVING AND RE-ERECTING EXISTING RAILING	FOOT	30



FILE NAME = c:\projects\struct1\016-1165.dgn	USER NAME = hamdanah	DESIGNED -	REVISED -	STATE OF ILLINOIS DEPARTMENT OF TRANSPORTATION	TAYLOR STREET OVER I-90 / 94 BRIDGE REPAIRS S.N. 016-1165 AND S.N. 016-2535		F.A.J. RTE. 1438	SECTION 2626.23 B-1	COUNTY COOK	TOTAL SHEETS 12	SHEET NO. 4	
PLOT SCALE = 50.0000" / IN.	CHECKED -	REVISED -	REVISED -		SCALE: NONE	SHEET NO. 1 OF 5 SHEETS	STA.	TO STA.	CONTRACT NO. 60C46			
PLOT DATE = 3/19/2008	DATE -	REVISED -	REVISED -		FED. ROAD DIST. NO. 1 ILLINOIS FED. AID PROJECT							



BILL OF MATERIALS

BAR	NO.	SIZE	LENGTH	SHAPE
d(E)	4	#5	24'-6"	—
d1(E)	4	#5	13'-0"	—
d2(E)	8	#6	4'-0"	—
b(E)	8	#5	32'-3"	—
d(E)	6	#4	4'-9"	┌
d1(E)	2	#5	3'-11"	┌
d2(E)	4	#5	3'-6"	┌
x(E)	34	#5	2'-4"	┌
x1(E)	59	#5	5'-1"	┌
CONCRETE REMOVAL			CU. YD.	5.6
REINFORCEMENT BAR (EPOXY COATED)			POUND	920
CONCRETE SUPERSTRUCTURE			CU. YD.	5.7
PREFORMED JOINT STRIP SEAL			FOOT	35.7

NOTES:
REINFORCEMENT BARS DESIGNATED (E) SHALL BE EPOXY COATED.

LEGEND

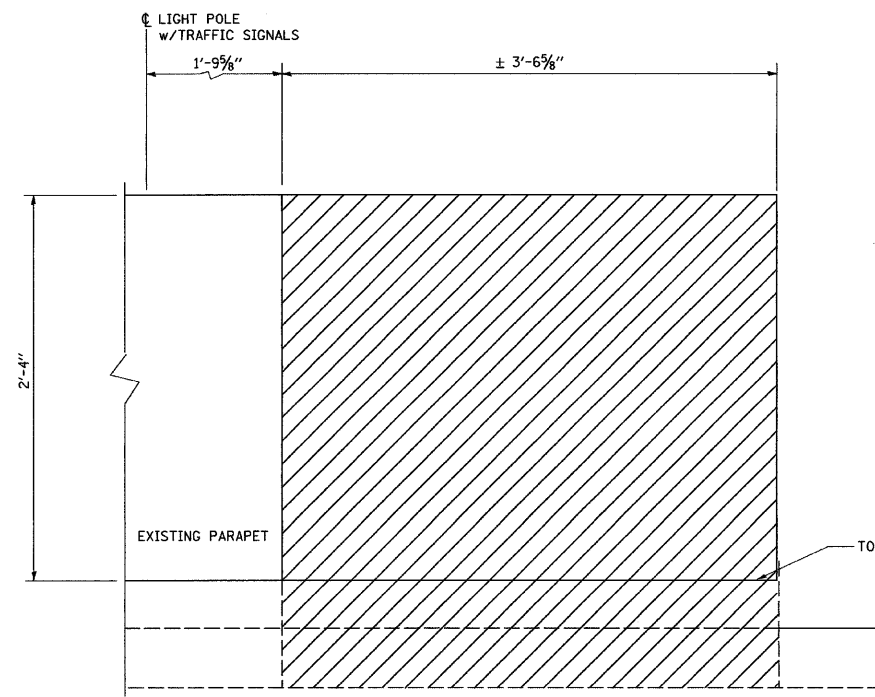
INDICATES CONCRETE REMOVAL

FILE NAME = c:\projects\struct1\016-1165.dgn	USER NAME = hmdnrah	DESIGNED -	REVISED -
PLOT SCALE = 50.0000' / IN.	CHECKED -	DRAWN -	REVISED -
PLOT DATE = 3/19/2008	DATE -	CHECKED -	REVISED -

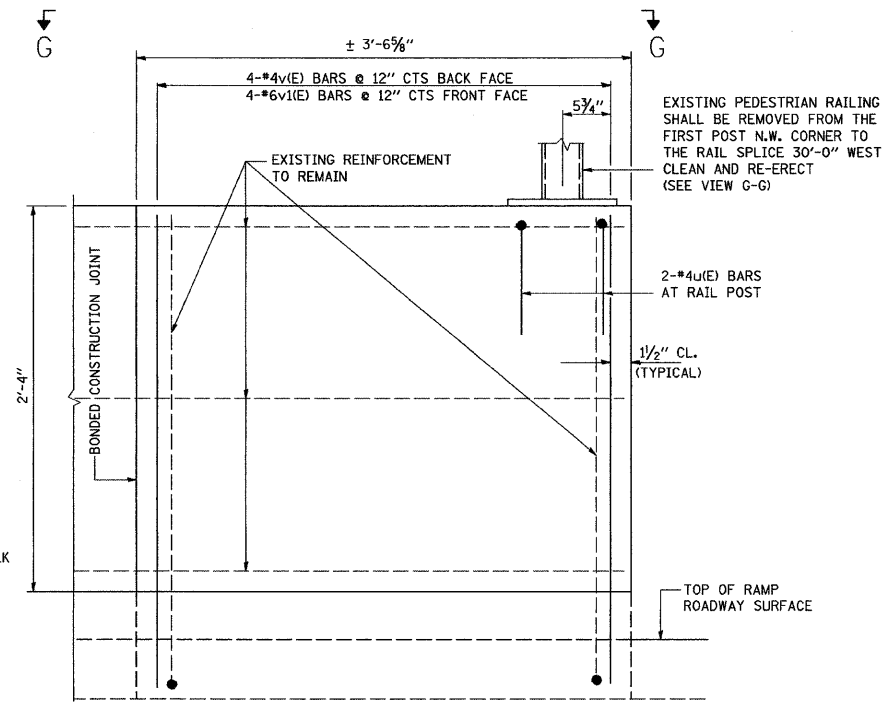
**STATE OF ILLINOIS
DEPARTMENT OF TRANSPORTATION**

TAYLOR STREET AND OVER I-90 /94 (DAN RYAN EXPRESSWAY)			
BRIDGE JOINT REPAIRS			
S.N. 016-1165 AND S.N. 016-2535			
SCALE: NONE	SHEET NO. 2 OF 5 SHEETS	STA.	TO STA.

F.A.U. RTE. 1438	SECTION 2626.23 B-I	COUNTY COOK	TOTAL SHEETS 12	SHEET NO. 5
CONTRACT NO. 60C46				
FED. ROAD DIST. NO. 1 ILLINOIS FED. AID PROJECT				

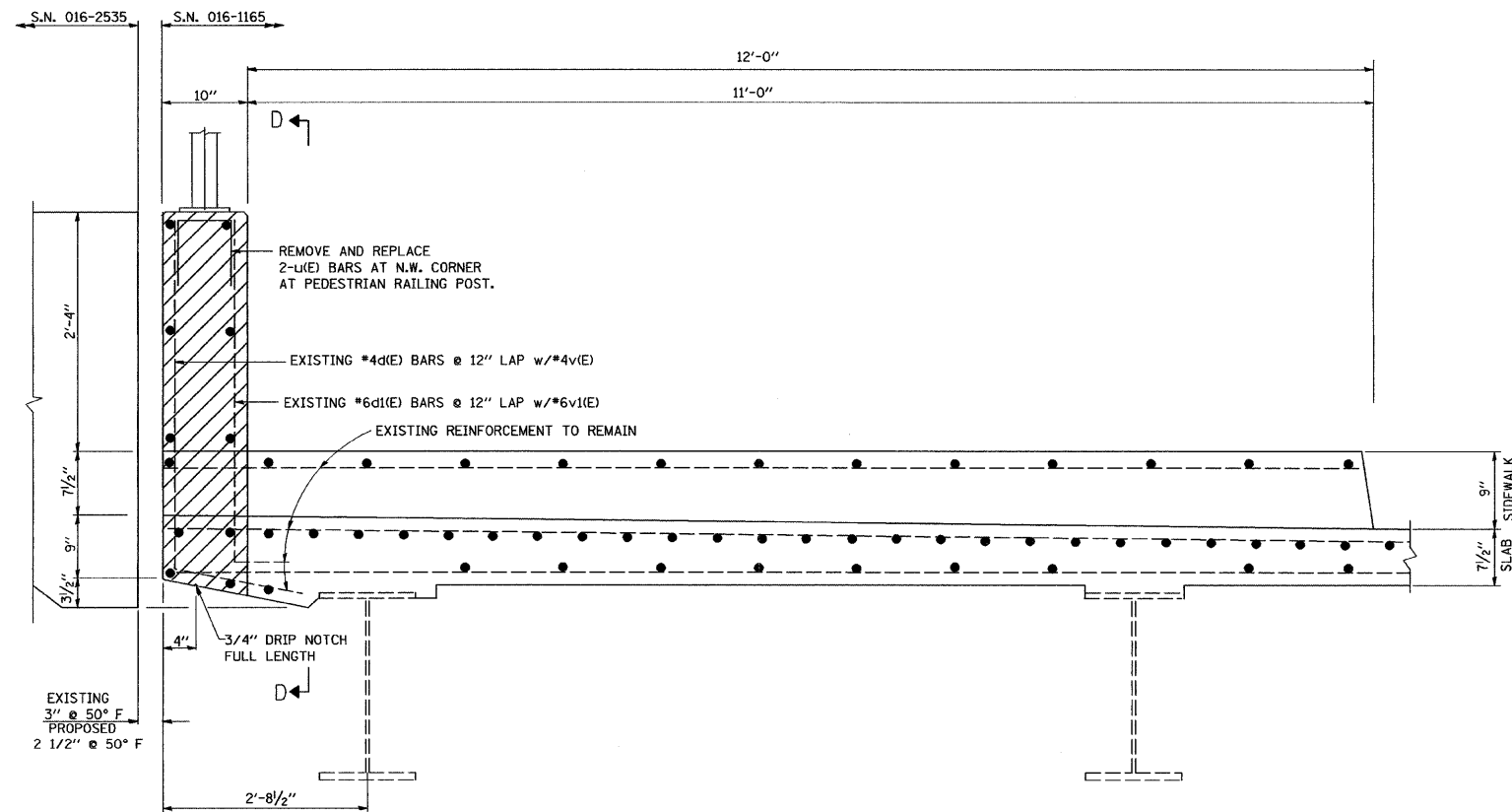


SECTION D-D
EXISTING NORTH WALL

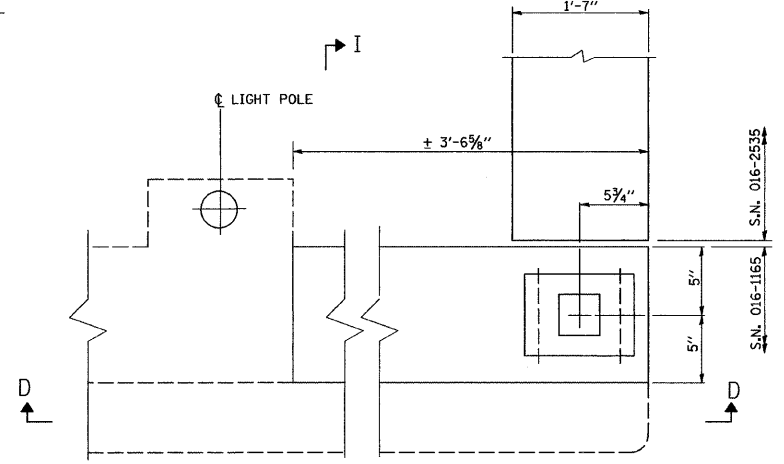


SECTION D-D
PROPOSED

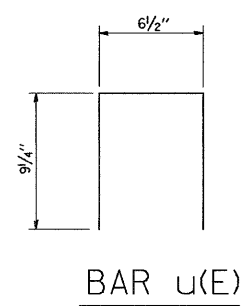
EXISTING PEDESTRIAN RAILING SHALL BE REMOVED FROM THE FIRST POST N.W. CORNER TO THE RAIL SPLICE 30'-0" WEST CLEAN AND RE-ERECT (SEE VIEW G-G)



EXISTING SECTION I-I THRU SIDEWALK
(LOOKING EAST)



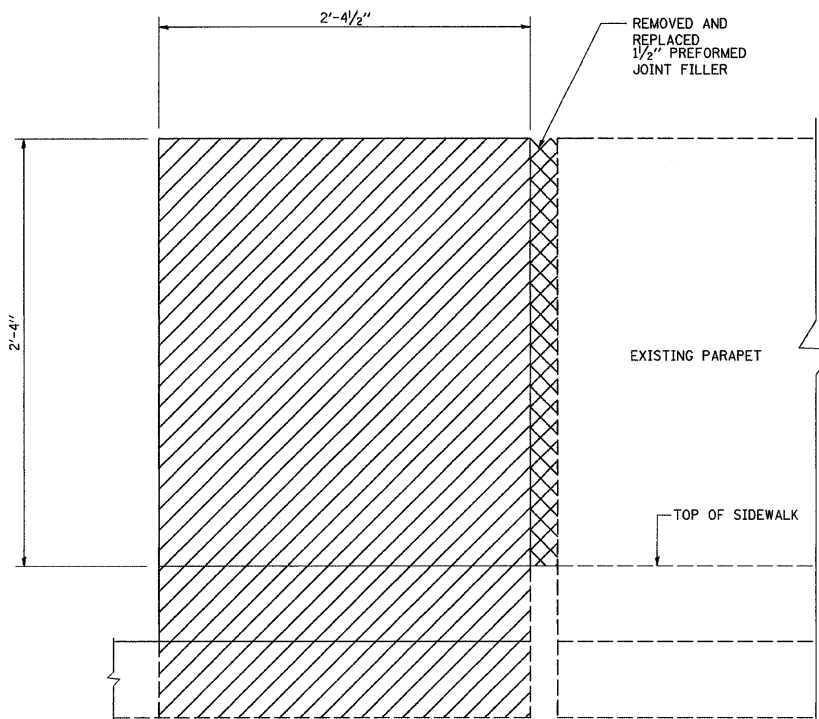
VIEW G-G



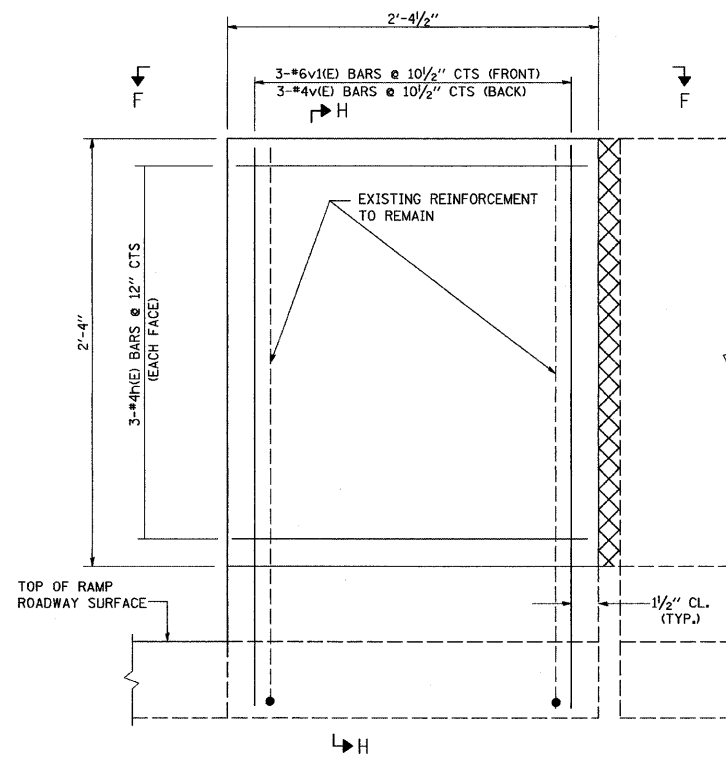
BAR u(E)

LEGEND
 INDICATES CONCRETE REMOVAL

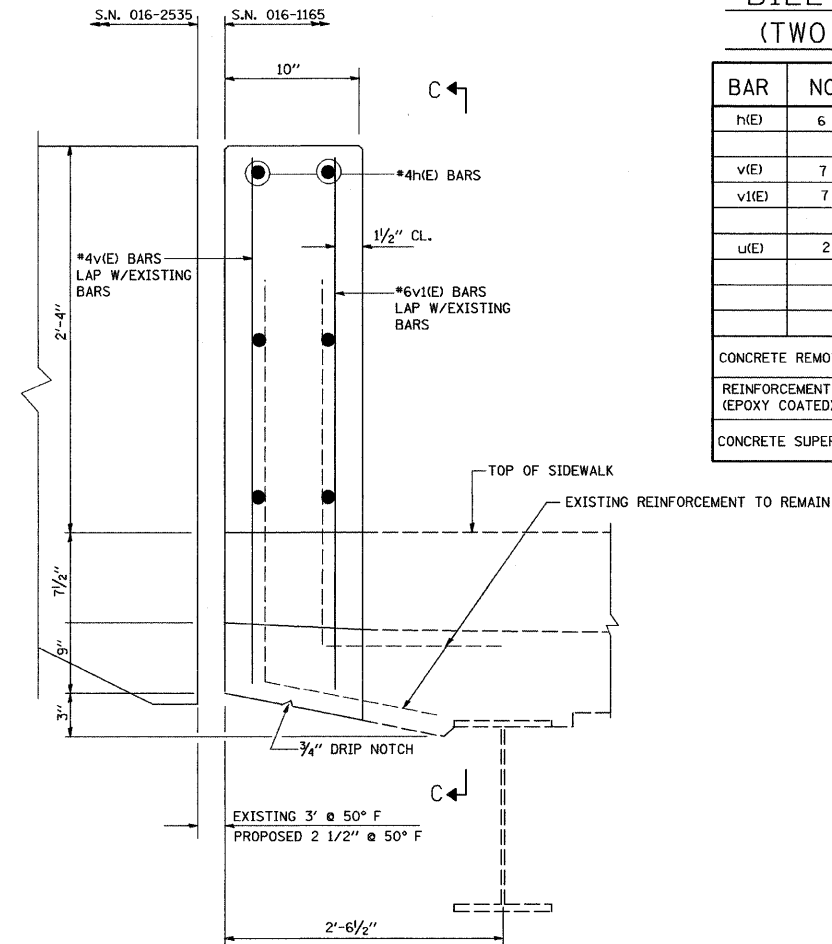
FILE NAME = c:\projects\struct1\016-1165.dgn	USER NAME = hamdanah	DESIGNED -	REVISED -	STATE OF ILLINOIS DEPARTMENT OF TRANSPORTATION	TAYLOR STREET OVER I-90 /94 (DAN RYAN EXPRESSWAY) BRIDGE JOINT REPAIRS S.N. 016-1165 AND S.N. 016-2535			F.A.U. RTE. 1438	SECTION 2626.23 B-I	COUNTY COOK	TOTAL SHEETS 12	SHEET NO. 6
PLOT SCALE = 50.0000' / IN.	CHECKED -	REVISED -	REVISED -		SCALE: NONE	SHEET NO. 3 OF 5 SHEETS	STA.	TO STA.	CONTRACT NO. 60C46			
PLOT DATE = 3/19/2008	DATE -	REVISED -	REVISED -		FED. ROAD DIST. NO. 1 ILLINOIS FED. AID PROJECT							



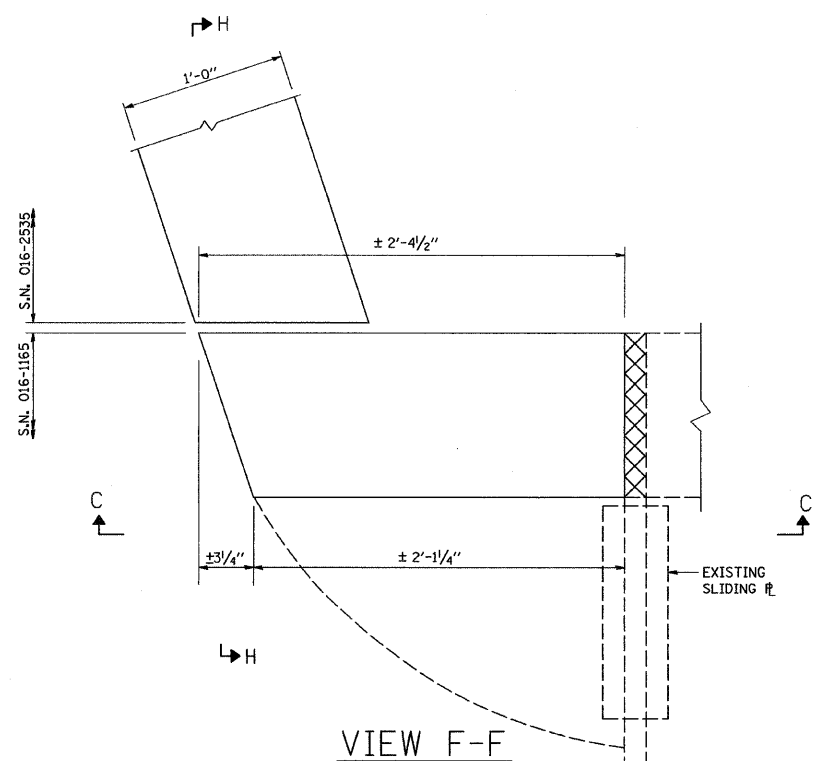
SECTION C-C
EXISTING BARRIER WALL



SECTION C-C
PROPOSED BARRIER WALL



SECTION H-H



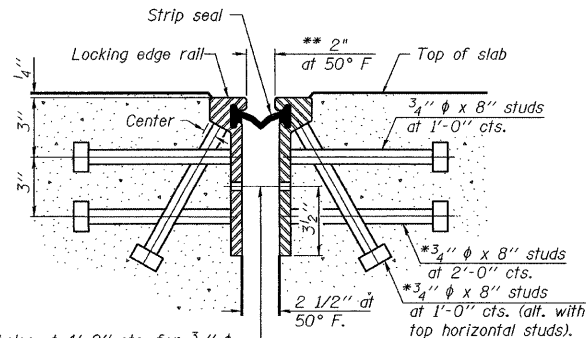
VIEW F-F

BILL OF MATERIALS
(TWO BARRIER WALLS)

BAR	NO.	SIZE	LENGTH	SHAPE
h(E)	6	#4	2'-0"	—
v(E)	7	#4	3'-5"	—
v1(E)	7	#6	3'-6"	—
u(E)	2	#4	1'-3 3/4"	□
CONCRETE REMOVAL			CU. YDS.	0.7
REINFORCEMENT BAR (EPOXY COATED)			POUND	60
CONCRETE SUPERSTRUCTURE			CU. YDS.	0.7

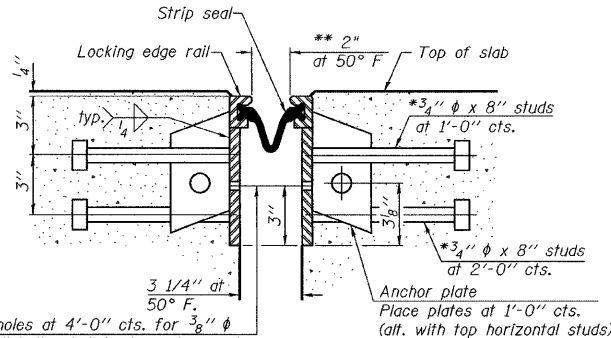
LEGEND
 INDICATES CONCRETE REMOVAL

*Granular or solid flux filled headed studs conforming to Article 1006.32 of the Std. Specs., automatically end welded.
 **When joint is fixed, dimension is set at 1 1/2".



7/16" ϕ holes at 4'-0" cts. for 3/8" ϕ bolts. All bolts shall be burned, sawed, or chipped off flush with the plates after forms are removed, typ.

SECTION THRU ROLLED RAIL JOINT

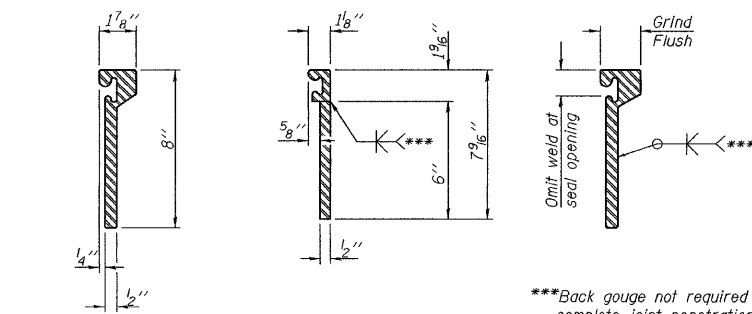


7/16" ϕ holes at 4'-0" cts. for 3/8" ϕ bolts. All bolts shall be burned, sawed, or chipped off flush with the plates after forms are removed, typ.

SECTION THRU WELDED RAIL JOINT

Notes:

The strip seal shall be made continuous and shall have a minimum thickness of 1/4". The configuration of the strip seal shall match the configuration of the Locking Edge Rails. Open or "webbed" strip seal gland configurations are not permitted. The gland shall be sized for a maximum rated movement of 4 inches. The height and thickness of the Locking Edge Rails shown are minimum dimensions. The actual configuration of the Locking Edge Rails and matching strip seal may vary from manufacturer to manufacturer. Flanged edge rails will not be allowed. Locking Edge Rails may be spliced at slope discontinuities and stage construction joints. The manufacturer's recommended installation methods shall be followed. The joint opening and deck dimensions detailed on the superstructure are based on a rolled rail expansion joint. If the Contractor elects to use the welded rail expansion joint, the opening and deck dimensions shall be modified according to the dimensions detailed on this sheet. Required modifications shall be made at no additional cost to the State. All steel components shall be galvanized after fabrication according to Article 520.03 of the Standard Specifications.



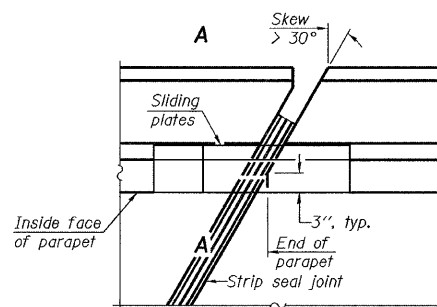
ROLLED (EXTRUDED) RAIL WELDED RAIL

***Back gouge not required if complete joint penetration is verified by mock-up.

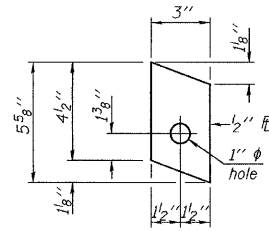
LOCKING EDGE RAIL SPLICE

The inside of the locking edge rail groove shall be free of weld residue.

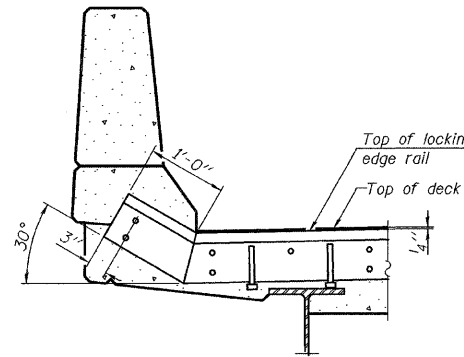
LOCKING EDGE RAILS



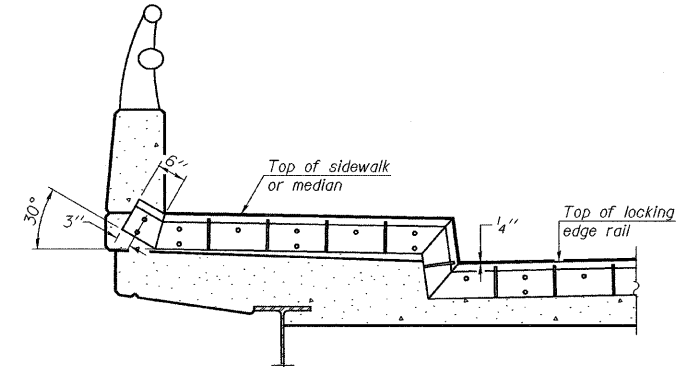
PLAN



ANCHOR PLATE (for welded rail)



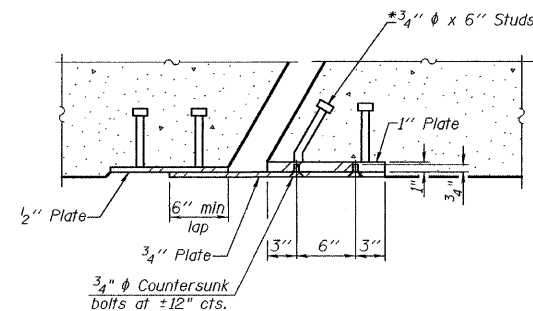
AT PARAPET



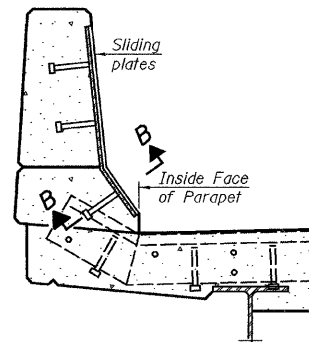
AT SIDEWALK OR MEDIAN

Shorter plates with a single row of studs at 12" cts. may be necessary on medians which are shallower than 9". See manufacturer's recommendation.

TYPICAL END TREATMENTS



SECTION B-B



SECTION A-A

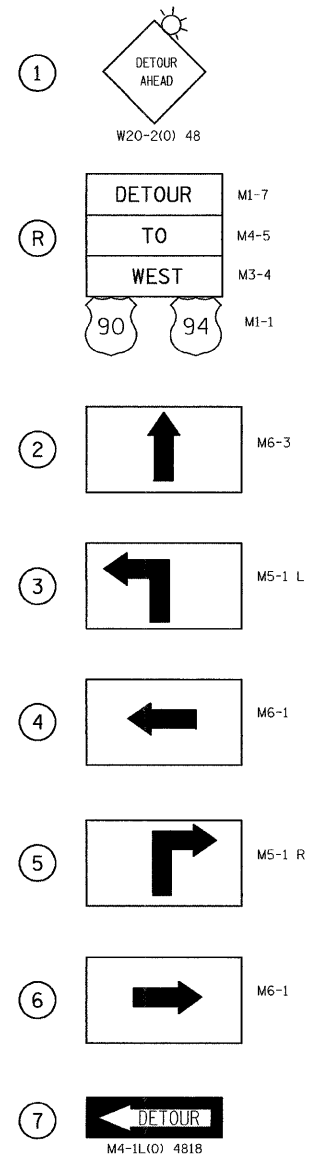
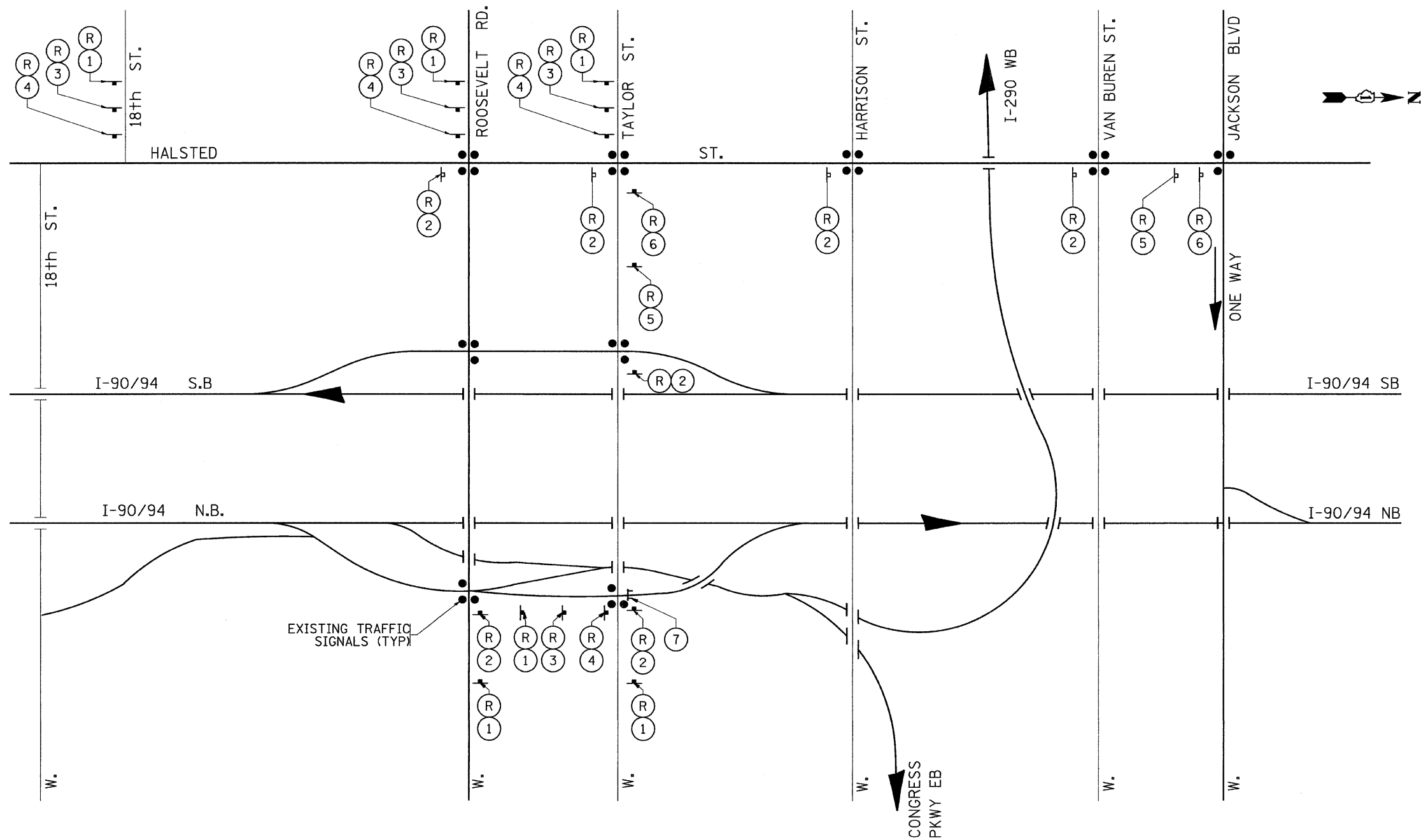
POINT BLOCK DETAILS (for skews > 30°)

BILL OF MATERIAL

Item	Unit	Total
Preformed Joint Strip Seal	Foot	35.7

EJ-SSJ 9-3-07

FILE NAME = c:\projects\struct1\016-1165.dgn	USER NAME = hamdanah	DESIGNED -	REVISED -	STATE OF ILLINOIS DEPARTMENT OF TRANSPORTATION	TAYLOR STREET OVER I-90 / 94 (DAN RYAN EXPRESSWAY) PREFORMED JOINT STRIP SEAL S.N. 016-1165 AND S.N. 016-2535				F.A.U. RTE. 1438	SECTION 2626.23 B-I	COUNTY COOK	TOTAL SHEETS 12	SHEET NO. 8
PLOT SCALE = 50.0000 "/ IN.	CHECKED -	REVISED -	REVISED -		SCALE: NONE	SHEET NO. 5 OF 5 SHEETS	STA.	T0 STA.	CONTRACT NO. 60C46				
PLOT DATE = 3/19/2008	DATE -	REVISED -	REVISED -		FED. ROAD DIST. NO. 1 ILLINOIS FED. AID PROJECT								



NOTES:

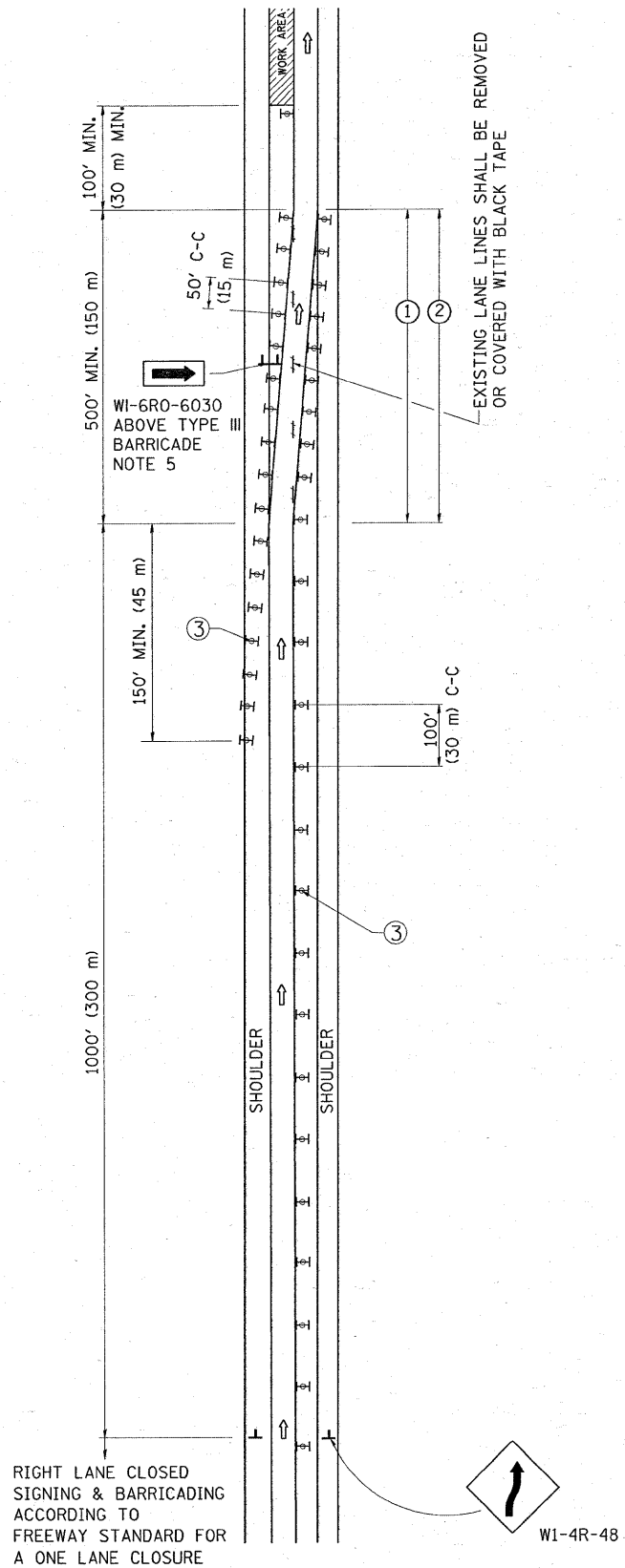
1. ALL CONFLICTING TRAIL BLAZER ASSEMBLIES SHALL BE COMPLETELY COVERED.
2. ALL SIGNS SHALL BE BLACK ON ORANGE EXCEPT INTERSTATE ROUTE MARKERS.

┆ SIGN

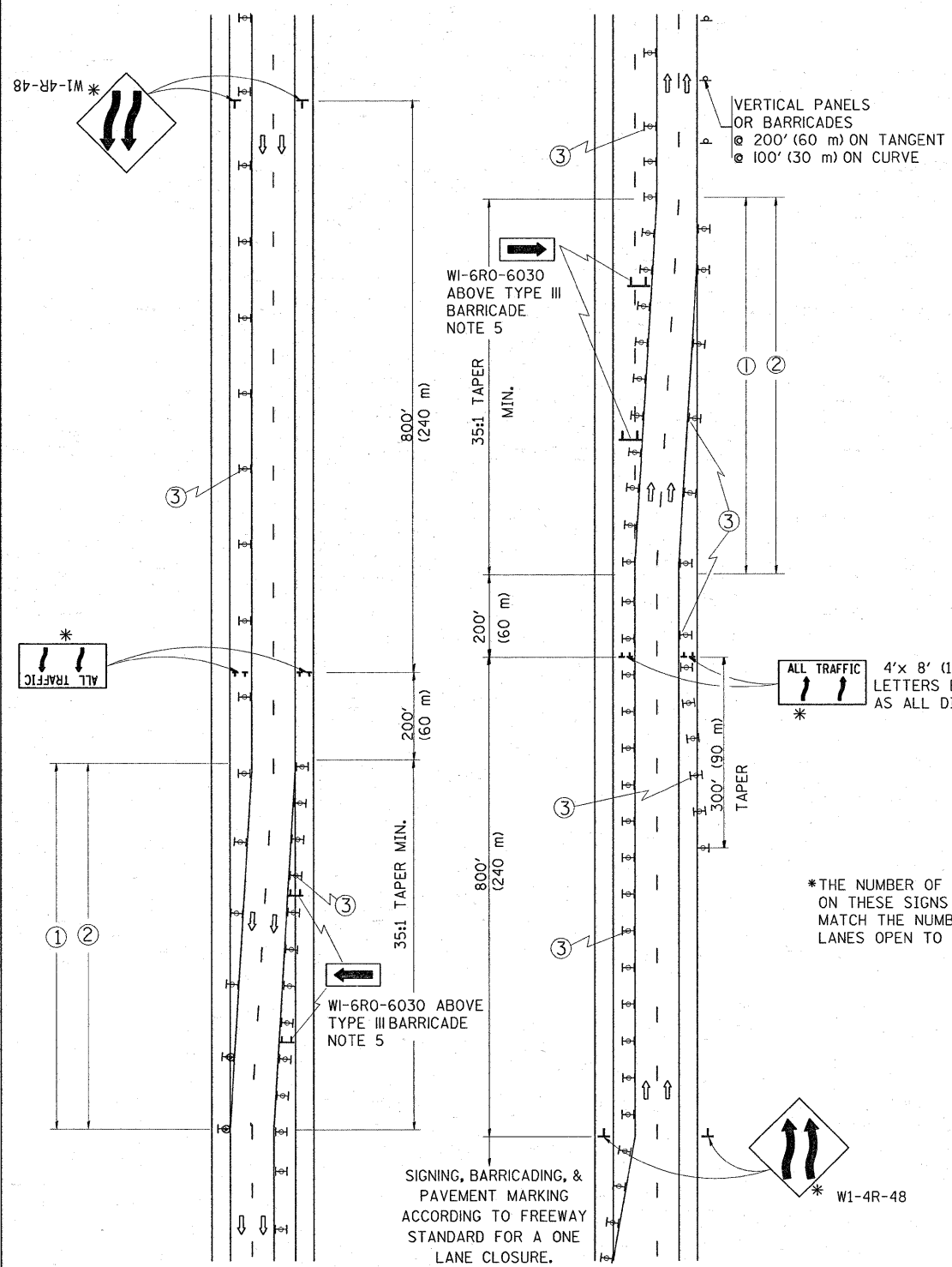
┆ TYPE III BARRICADES (2 OR MORE) PER DISTRICT ENTRANCE RAMP
 CLOSURE DETAIL (TC-08); SIGN ⑦ TO BE MOUNTED ABOVE TYPE III BARRICADE

FILE NAME = c:\projects\struct1\016-1165.dgn	USER NAME = hamdanah	DESIGNED -	REVISED -	STATE OF ILLINOIS DEPARTMENT OF TRANSPORTATION	TAYLOR STREET OVER I-90 /94 DETOUR PLAN S.N. 016-1165 AND S.N. 016-2535		F.A.U. RTE. 1438	SECTION 2626.23 B-I	COUNTY COOK	TOTAL SHEETS 12	SHEET NO. 9
	PLOT SCALE = 50,0000 "/ IN.	CHECKED -	REVISED -		SCALE:	SHEET NO. OF SHEETS	STA. TO STA.	CONTRACT NO. 60C46 FED. ROAD DIST. NO. 1 [ILLINOIS] FED. AID PROJECT			
PLOT DATE = 3/19/2008	DATE -	REVISED -									

SINGLE LANE WEAVE



MULTI-LANE WEAVE



GENERAL NOTES

- ① EXISTING CONFLICTING PAVEMENT MARKING LINES SHALL BE REMOVED OR COVERED WITH BLACK TAPE. PAVEMENT MARKING REMOVAL OR BLACK TAPE SHALL NOT BE REQUIRED FOR LANE CLOSURES UNDER 24 HOURS IN DURATION.
- ② CONTINUOUS REFLECTIVE TEMPORARY PAVEMENT MARKING TAPE SHALL BE PLACED THROUGHOUT THE TAPER AND FOR 300' (90 m) ALONG SIDE THE WORK AREA WHERE THE CLOSURE TIME IS GREATER THAN FOURTEEN DAYS. THE LEFT EDGE LINE SHALL BE YELLOW AND THE RIGHT EDGE LINE SHALL BE WHITE. FOR MULTI-LANE WEAVE LANE LINES SHALL BE 10'-30' (3 m-9 m) SKIP DASH, WHITE.
- ③ PLASTIC DRUMS WITH STEADY BURN LIGHTS AT 50' (15 m) C-C SPACING IN TAPERS AND 100' (30 m) C-C SPACING IN TANGENTS.
- ④ ALL SIGNS SHALL BE POST MOUNTED IF THE CLOSURE TIME EXCEEDS FOUR DAYS.
- ⑤ IF A TYPE III BARRICADE WITH AN ATTACHED SIGN PANEL WHICH MEETS NCHRP 350 IS NOT AVAILABLE, THE SIGNS MAY BE MOUNTED ON NCHRP 350 TEMPORARY SIGN SUPPORTS DIRECTLY IN FRONT OF THE BARRICADE.
- ⑥ IF THE WIDTH OF OFFSET IS LESS THAN 6' THEN THE TYPE III BARRICADE WITH ATTACHED ARROW SIGN PANEL CAN BE ELIMINATED IN THE TAPER AREAS.

ALL TRAFFIC 4'x 8' (1.2 m x 2.4 m); 1 (25) BORDER; 10 (250) CAPITAL LETTERS BACKGROUND SHEETING SHALL BE THE SAME AS ALL DIAMOND SHAPED CONSTRUCTION SIGNS.

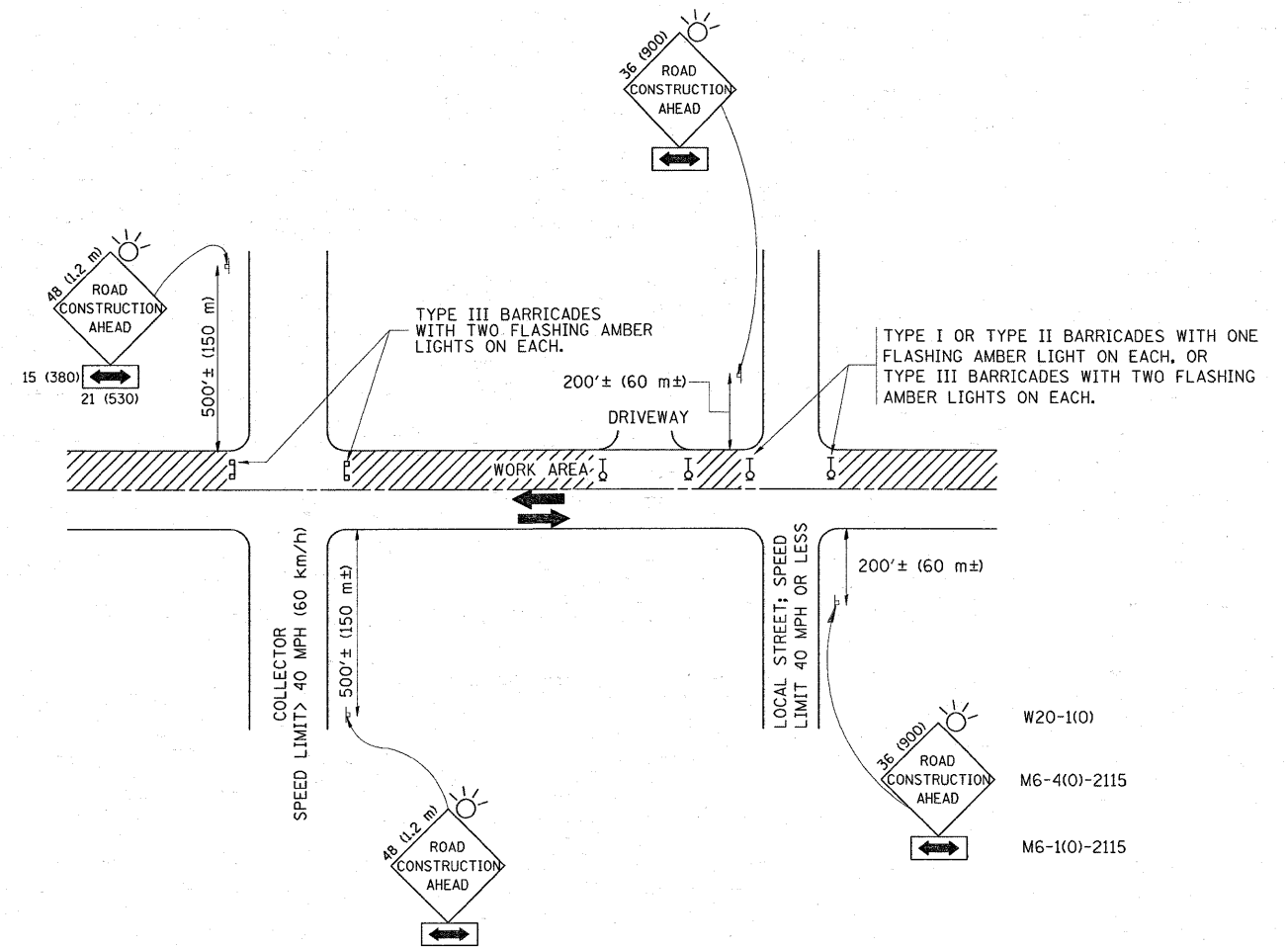
*THE NUMBER OF ARROWS ON THESE SIGNS SHALL MATCH THE NUMBER OF LANES OPEN TO TRAFFIC

SYMBOLS

- ↑ DIRECTION OF TRAFFIC
- ▨ WORK AREA
- ┆ SIGN ON PORTABLE OR PERMANENT SUPPORT
- ⊞ TYPE II BARRICADE, DRUM OR VERTICAL BARRICADE WITH MONO-DIRECTIONAL STEADY BURNING LIGHT

ALL DIMENSIONS ARE IN INCHES (MILLIMETERS) UNLESS OTHERWISE SHOWN

FILE NAME = W:\dststd\22x34\to09.dgn	USER NAME = tnrkosmv	DESIGNED - DWS	REVISED - DWS 11-96	STATE OF ILLINOIS DEPARTMENT OF TRANSPORTATION	TRAFFIC CONTROL DETAILS FOR FREEWAY SINGLE & MULTI-LANE WEAVE			F.A. RTE.	SECTION	COUNTY	TOTAL SHEETS	SHEET NO.
	PLOT SCALE = 50,000' / IN.	DRAWN -	REVISED - JAF 01-03		SCALE: NONE	SHEET NO. 1 OF 1 SHEETS	STA.	TO STA.	TC-09	CONTRACT NO.	12	10
	PLOT DATE = 3/18/2008	CHECKED -	REVISED - JAF 02-06		DATE - 02-87	REVISED - SPB 01-07	FED. ROAD DIST. NO. 1 ILLINOIS FED. AID PROJECT					



TRAFFIC CONTROL AND PROTECTION FOR SIDE ROADS, INTERSECTIONS, AND DRIVEWAYS

NOTES:

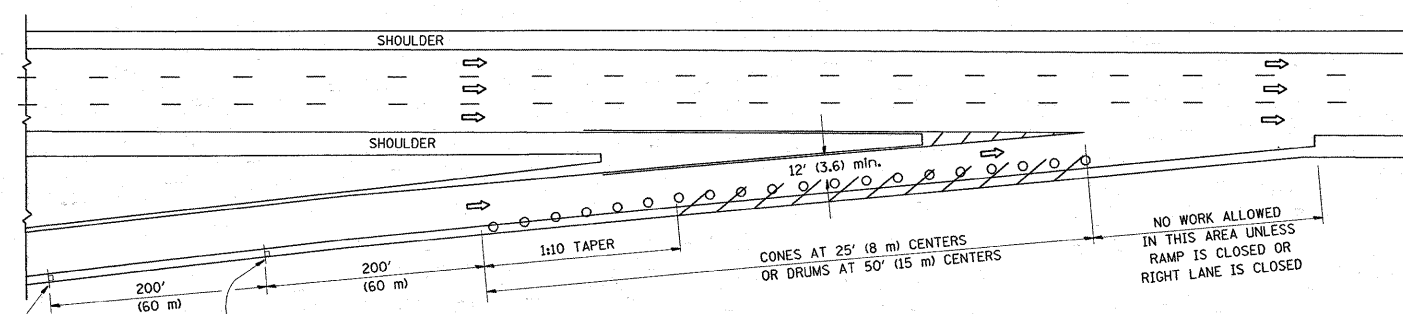
- A. FOR NO LANE RESTRICTION ON THE SIDE ROAD OR DRIVEWAYS
 1. SIDE ROAD WITH A SPEED LIMIT OF 40 MPH (60 km/h) OR LESS AS SHOWN ON THE DRAWING AND AS DIRECTED BY THE ENGINEER:
 - a) ONE ROAD CONSTRUCTION AHEAD SIGN 36 x 36 (900x900) WITH A FLASHER AND FLAG MOUNTED ON IT APPROXIMATELY 200' (60 m) IN ADVANCE OF THE MAIN ROUTE.
 - b) THE CLOSED PORTION OF THE MAIN ROUTE SHALL BE PROTECTED BY BLOCKING WITH TYPE I, TYPE II OR TYPE III BARRICADES, 1/3 OF THE CROSS SECTION OF THE CLOSED PORTION.
 2. SIDE ROAD WITH A SPEED LIMIT GREATER THAN 40 MPH (60 km/h) AS SHOWN ON THE DRAWING AND AS DIRECTED BY THE ENGINEER:
 - a) ONE ROAD CONSTRUCTION AHEAD SIGN 48 x 48 (1.2 m x 1.2 m) WITH A FLASHER MOUNTED ON IT APPROXIMATELY 500' (150 m) IN ADVANCE OF THE MAIN ROUTE.
 - b) THE CLOSED PORTION OF THE MAIN ROUTE SHALL BE PROTECTED BY BLOCKING WITH TYPE III BARRICADES, 1/2 OF THE CROSS SECTION OF THE CLOSED PORTION.
 3. WHEN THE SIDE ROAD LIES BETWEEN THE BEGINNING OF THE MAINLINE SIGNING AND THE WORK ZONE, A SINGLE HEADED ARROW (M6-1) SHALL BE USED IN LIEU OF THE DOUBLE HEADED ARROW (M6-4).
- B. FOR A LANE CLOSURE ON A SIDE ROAD OR DRIVEWAY:

USE APPLICABLE PORTIONS OF THE TYPICAL APPLICATION OF TRAFFIC CONTROL DEVICES (STD. 701501, STD. 701606 OR THE APPROPRIATE STANDARD). THE SPACING OF SIGNS AND BARRICADES SHALL BE ADJUSTED FOR FIELD CONDITIONS AS DIRECTED BY THE ENGINEER. THE DIRECTIONAL ARROW SHALL BE COVERED OR REMOVED WHEN NO LONGER CONSISTENT WITH THE SIDE ROAD LANE CLOSURE.
- C. ADVANCE WARNING SIGNS ARE TO BE OMITTED ON DRIVEWAY UNLESS OTHERWISE NOTED.
- D. THE TRAFFIC CONTROL AND PROTECTION FOR SIDE ROADS, INTERSECTIONS, AND DRIVEWAYS SHALL BE INCIDENTAL TO THE COST OF SPECIFIED TRAFFIC CONTROL STANDARDS OR ITEMS.

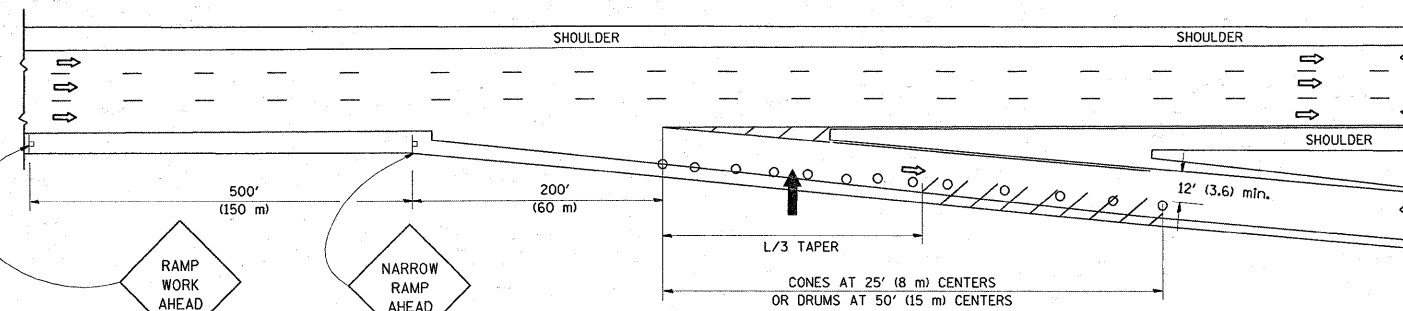
All dimensions are in millimeters (inches) unless otherwise shown.

FILE NAME = W:\distatd\22x34\td10.dgn	USER NAME = tunicosmv	DESIGNED - LHA	REVISED - J. OBERLE 10-18-95	STATE OF ILLINOIS DEPARTMENT OF TRANSPORTATION	TRAFFIC CONTROL AND PROTECTION FOR SIDE ROADS, INTERSECTIONS, AND DRIVEWAYS				F.A. RTE.	SECTION	COUNTY	TOTAL SHEETS	SHEET NO.
		DRAWN -	REVISED - A. HOUSEH 03-06-96		SCALE: NONE	SHEET NO. 1 OF 1 SHEETS	STA.	TO STA.				12	11
		CHECKED -	REVISED - A. HOUSEH 10-15-96		TC-10				CONTRACT NO.				
		DATE - 06-89	REVISED - T. RAMMACHER 01-06-00		FED. ROAD DIST. NO. 1 ILLINOIS FED. AID PROJECT								

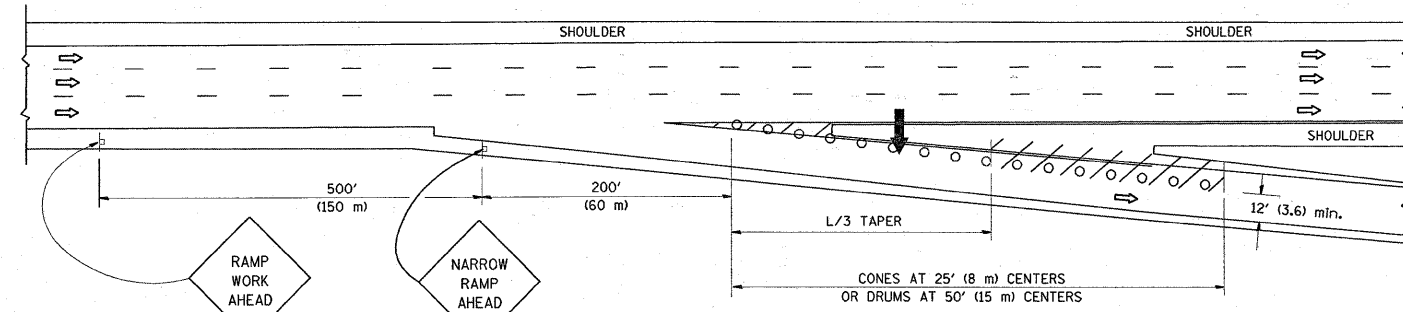
PARTIAL RAMP CLOSURE DETAILS



TYPICAL ENTRANCE RAMP



TYPICAL EXIT RAMP



TYPICAL EXIT RAMP

SYMBOLS

- ARROWBOARD
- WORK AREA
- SIGN ON PORTABLE OR PERMANENT SUPPORT
- FLAGGER WITH CONTROL SIGN
- TYPE II BARRICADE, DRUM OR VERTICAL BARRICADE WITH STEADY BURN MONO-DIRECTIONAL LIGHT
- CONE, DRUM OR BARRICADE

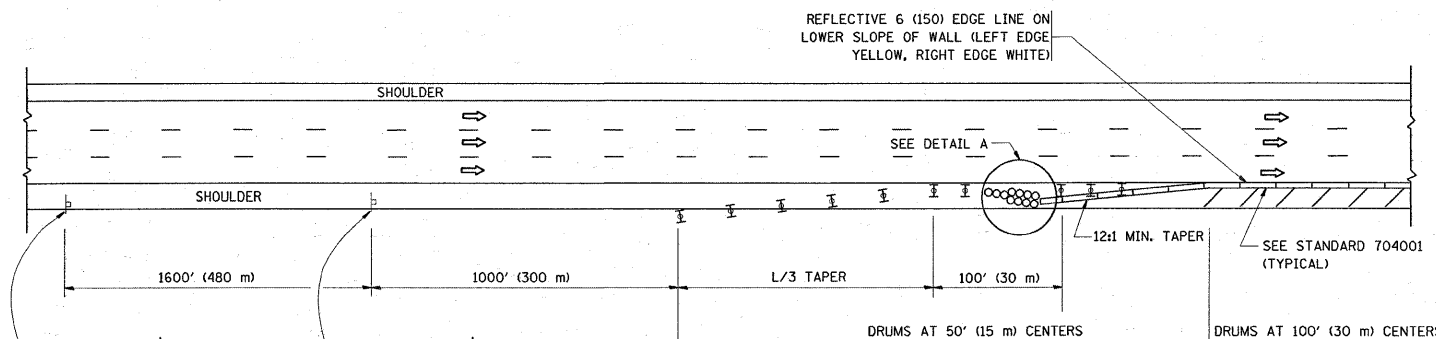
GENERAL NOTES

1. THE "L" DISTANCE EQUALS:

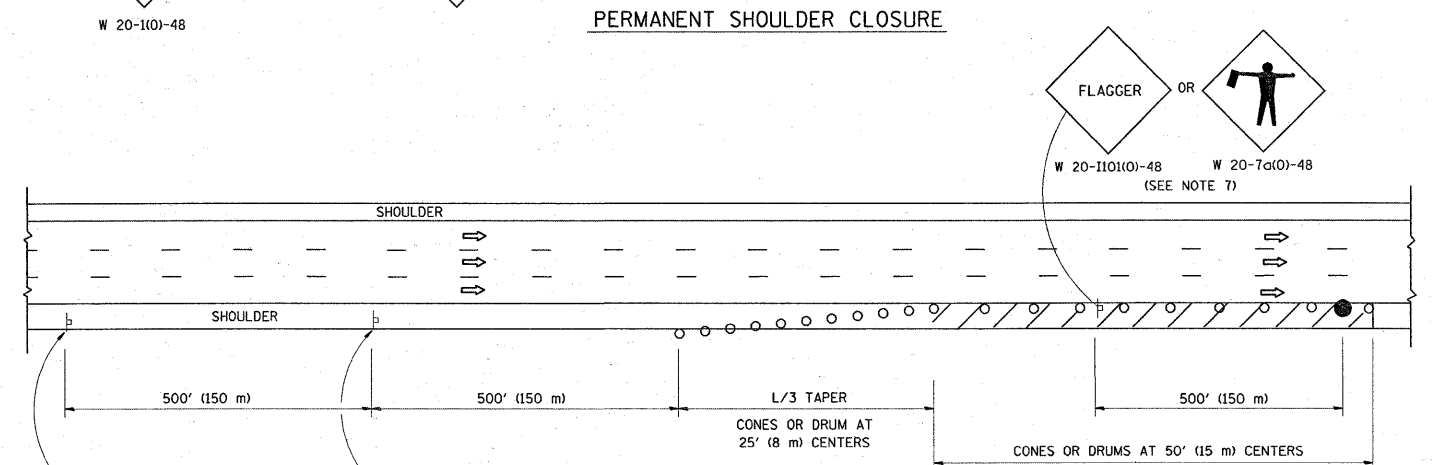
SPEED LIMIT		FORMULAS
45 mph (80 km/h)	METRIC	ENGLISH
OR GREATER:	$L=0.65(W)(S)$	$L=(W)(S)$

W = WIDTH OF OFFSET IN FEET (METERS)
S = NORMAL POSTED SPEED MPH (KM/H)
2. PLASTIC DRUMS WITH HIGH PERFORMANCE REFLECTIVE SHEETING AND STEADY BURNING LIGHTS ARE REQUIRED FOR ALL NIGHTTIME CLOSURES.
3. ALL SIGNS SHALL BE POST MOUNTED IF THE CLOSURE TIME EXCEEDS FOUR DAYS.
4. FLASHING LIGHTS SHALL BE USED DURING THE HOURS OF DARKNESS AND SHALL BE INSTALLED ABOVE THE FIRST TWO SETS OF SIGNS.

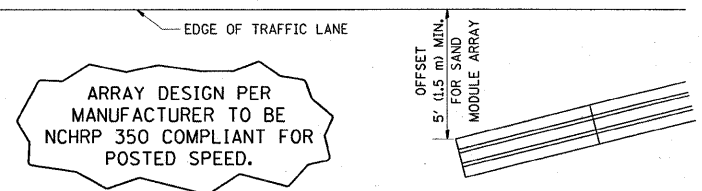
SHOULDER CLOSURE DETAILS



PERMANENT SHOULDER CLOSURE



DAYTIME SHOULDER CLOSURE



DETAIL "A"
IMPACT ATTENUATOR, TEMPORARY
(SEE NOTE 5)

ALL DIMENSIONS ARE IN INCHES (MILLIMETERS) UNLESS OTHERWISE SHOWN.

FILE NAME = W:\dstatd\22x34\17.dgn

USER NAME = tmekomv
PLOT SCALE = 50.0000' / IN.
PLOT DATE = 3/10/2008

DESIGNED -
DRAWN - D.W.S.
CHECKED -
DATE - 11-96

REVISED - J.A.F. 12-02
REVISED - 04-03
REVISED - J.A.F. 12-06
REVISED - S.P.B. 01-07

STATE OF ILLINOIS
DEPARTMENT OF TRANSPORTATION

TRAFFIC CONTROL DETAILS FOR FREEWAY
SHOULDER CLOSURES AND PARTIAL RAMP CLOSURES

SCALE: NONE SHEET NO. 1 OF 1 SHEETS STA. TO STA.

F.A. RTE.	SECTION	COUNTY	TOTAL SHEETS	SHEET NO.
			12	12
TC-17			CONTRACT NO.	
FED. ROAD DIST. NO. 1 (ILLINOIS) FED. AID PROJECT				