

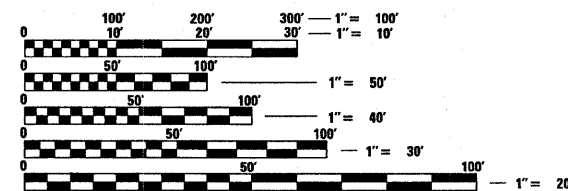
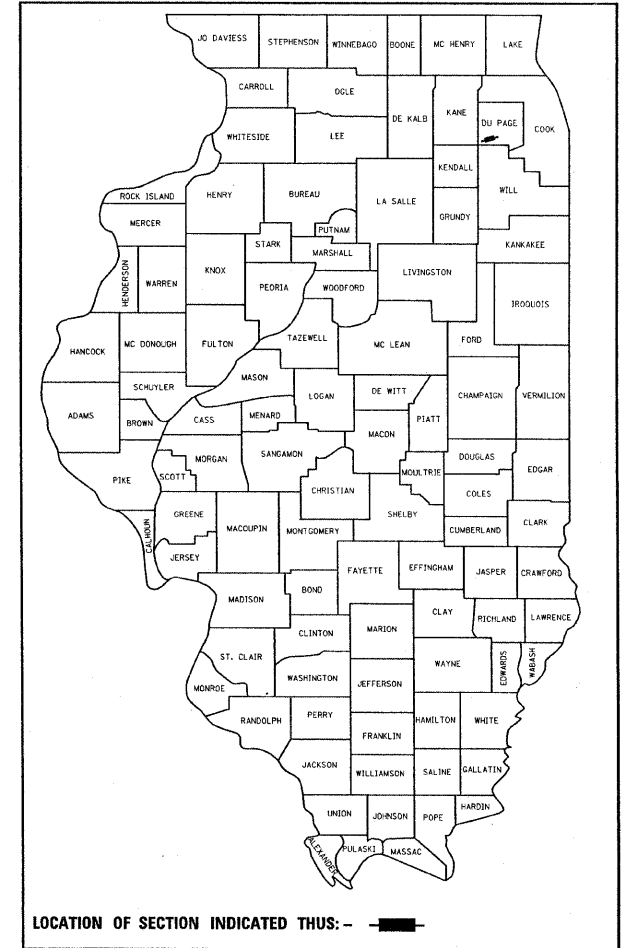
| F.A.P. RTE. | SECTION | COUNTY | TOTAL SHEETS | SHEET NO. |
|-----------------------|-------------|----------|--------------------|-----------|
| 311 | 652 X-B-R-1 | DU PAGE | 29 | 1 |
| FED. ROAD DIST. NO. 1 | | ILLINOIS | CONTRACT NO. 60C53 | |

STATE OF ILLINOIS
DEPARTMENT OF TRANSPORTATION
DIVISION OF HIGHWAYS

**PROPOSED
HIGHWAY PLANS**
F.A.P. 311 /US 34 (OGDEN AVE.)
AT WEST BRANCH DuPAGE RIVER
BRIDGE BEAM AND DECK REPLACEMENT
SECTION NO.: 652 X-B-R-1
STRUCTURE NO.: 022-0040
DuPAGE COUNTY
C-91-239-07

FOR INDEX OF SHEETS, SEE SHEET NO. 2

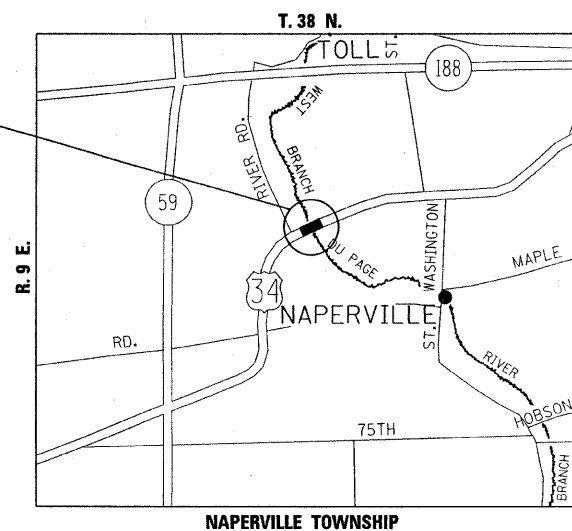
IMPROVEMENT LOCATED IN THE
CITY OF NAPERVILLE



FULL SIZE PLANS HAVE BEEN PREPARED USING STANDARD ENGINEERING SCALES. REDUCED SIZED PLANS WILL NOT CONFORM TO STANDARD SCALES. IN MAKING MEASUREMENTS ON REDUCED PLANS, THE ABOVE SCALES MAY BE USED.

J.U.L.I.E.
JOINT UTILITY LOCATION INFORMATION FOR EXCAVATION
1-800-892-0123
OR 811

IMPROVEMENT LOCATION



TRAFFIC DATA:
2005 ADT - 37100
SPEED LIMIT - 30 TO 35 MPH

PROJECT ENGINEER: J. CHANG (847) 705-4432
PROJECT MANAGER: KEN ENG (847) 705-4247

GROSS AND NET LENGTH OF IMPROVEMENT = 136 LIN FT. - .03 MILES

CONTRACT NO. 60C53

STATE OF ILLINOIS
DEPARTMENT OF TRANSPORTATION
DIVISION OF HIGHWAYS

SUBMITTED FEBRUARY 15, 20 08

Diane M. O'Keefe DEPUTY DIRECTOR OF HIGHWAYS, REGION ENGINEER

March 21, 20 08
Eric E. Haral ENGINEER OF DESIGN AND ENVIRONMENT

March 21, 20 08
Christina M. Reed DIRECTOR OF HIGHWAYS, CHIEF ENGINEER

PRINTED BY THE AUTHORITY
OF THE STATE OF ILLINOIS