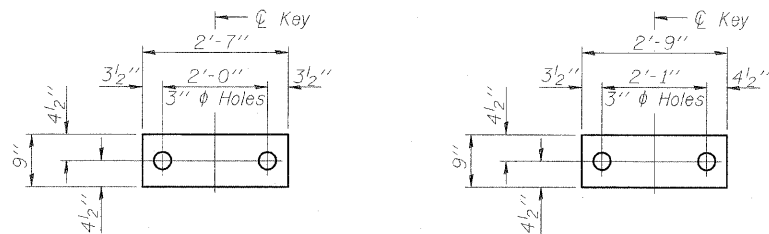


STATE OF ILLINOIS  
DEPARTMENT OF TRANSPORTATION

ROUTE NO.	SECTION	COUNT	DATE	SHEET NO.	SHEET NO. 6
FAP 311	625X-B-R-1	DuPage	29	14	16 SHEETS
FED. ROAD DIST. NO. 7	CHANGES	FED. AID PROJECT			

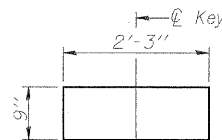
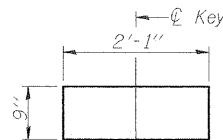
Contract #60C53



**FABRIC BEARING PAD**  
(Interior)

**FABRIC BEARING PAD**  
(adjacent to 21"x48" beams)

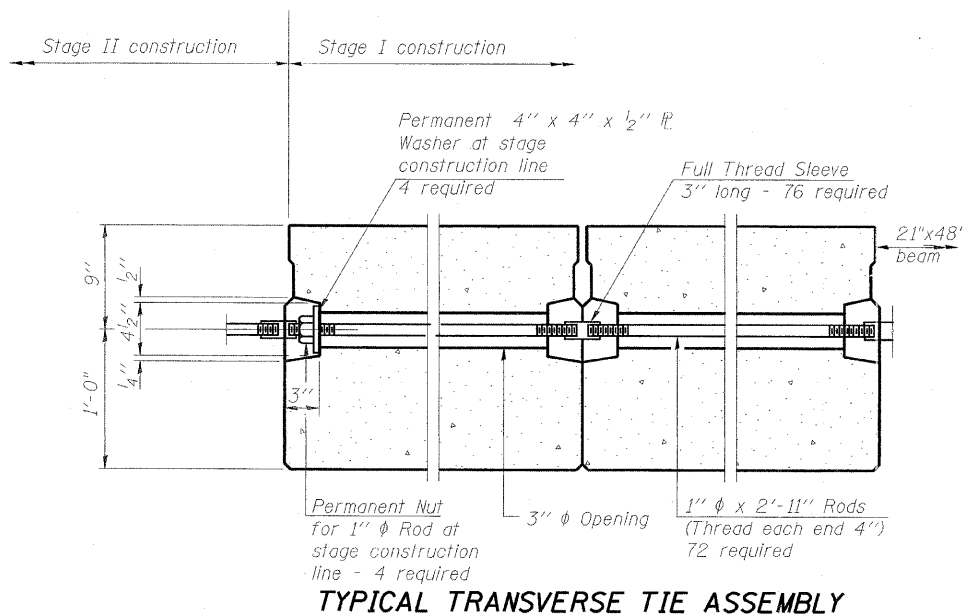
**FIXED**



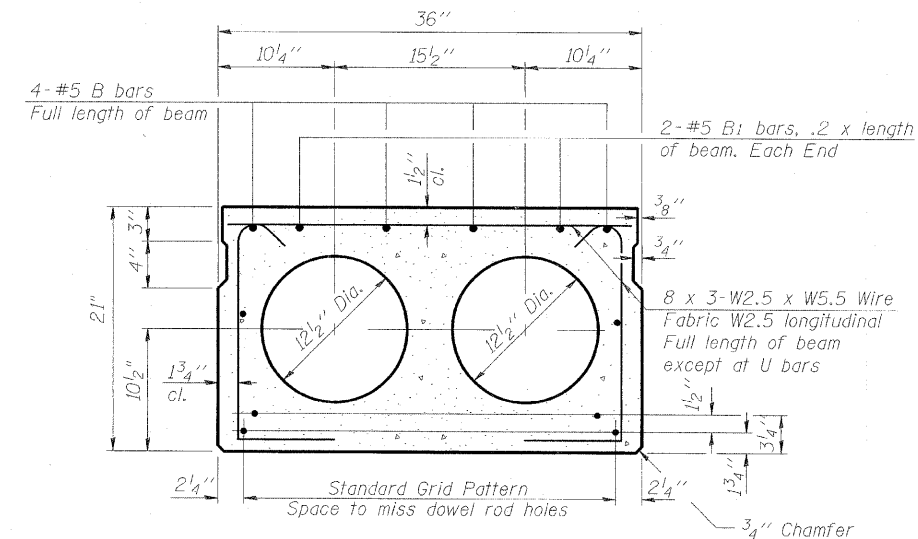
**FABRIC BEARING PAD**  
(Interior)

**FABRIC BEARING PAD**  
(adjacent to 21"x48" beams)

**EXPANSION**



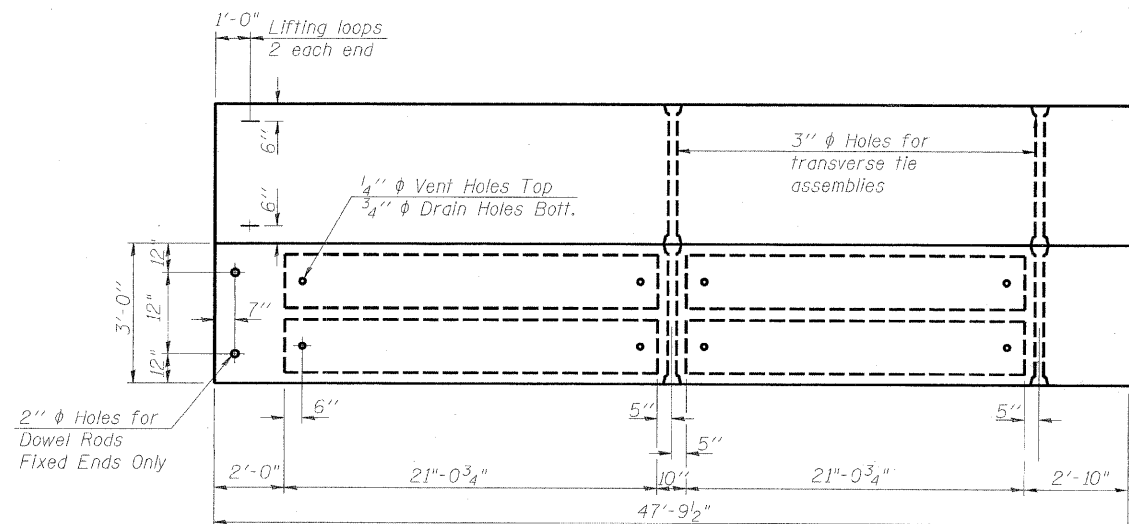
**TYPICAL TRANSVERSE TIE ASSEMBLY**



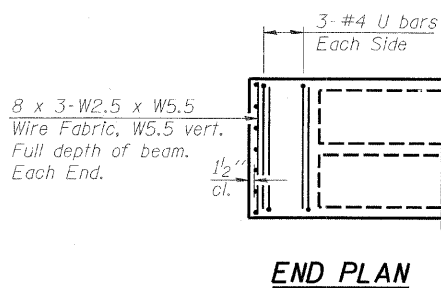
**TYPICAL SECTION**

16 - 1/2" phi Strands, Each Strand Stressed to 30,900 Lbs.  
6-Strands 1 3/4" up, 8-Strands 3/4" up, 2-strands 9" up

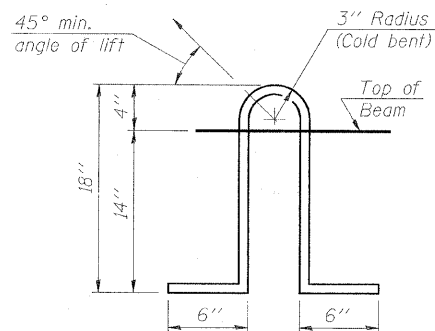
Note:  
Place strands symmetrically about centerline of beam.



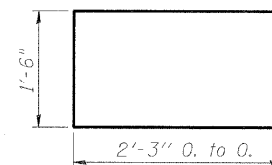
**PLAN**  
(36 required)



**END PLAN**



**LIFTING LOOP DETAIL**



**BAR U**

**NOTES**

Prestressing steel shall be uncoated high strength, low relaxation 7-wire strand, Grade 270. The nominal diameter shall be 1/2" and the nominal cross-sectional area shall be 0.153 sq. in. Lifting loops shall be 2 - 1/2" phi - 270 ksi strands, as shown. The 1" phi rods in the transverse tie assembly shall be tightened to a snug fit and the threads set. Pockets that receive transverse tie bar on outside shall be filled with grout after transverse tie assembly is in place. Non prestressing steel shall conform to ASTM A 706 Gr. 60 (IL Modified). The bearing seat surfaces shall be adjusted by shimming to assure firm and even bearing. Two 1/8" fabric adjusting shims of the dimensions of the Exterior Bearing Pad shall be provided for each bearing. Keyway surfaces shall be cleaned to remove form oil or other bond breaking material prior to shipment of the beams. Cleaning shall be done by sandblasting the keyway areas between top of the beam and the bottom edge of the key. Corrosion inhibitor, per Article 1020.05(b)(12) of the Standard Specifications, shall be used in the concrete for precast prestressed concrete deck beams. Required Release Strength, f'ci, shall be 4000 p.s.i.

**BILL OF MATERIAL**

Precast Prestressed Concrete Deck Beams (21" depth)	Sq. Ft.	5,162
---	---------	-------

**21" x 36" P.P.C. DECK BEAMS**  
**F.A.P. 311 (US RTE. 34)**  
**OVER W BRANCH OF DU PAGE RIVER**  
**SECTION 652X-B-R-1,**  
**DU PAGE COUNTY, STA. 1701+11**  
**STRUCTURE NO. 022-0040**



DESIGNED	DDB
CHECKED	LLV
DRAWN	JSD
CHECKED	DDB