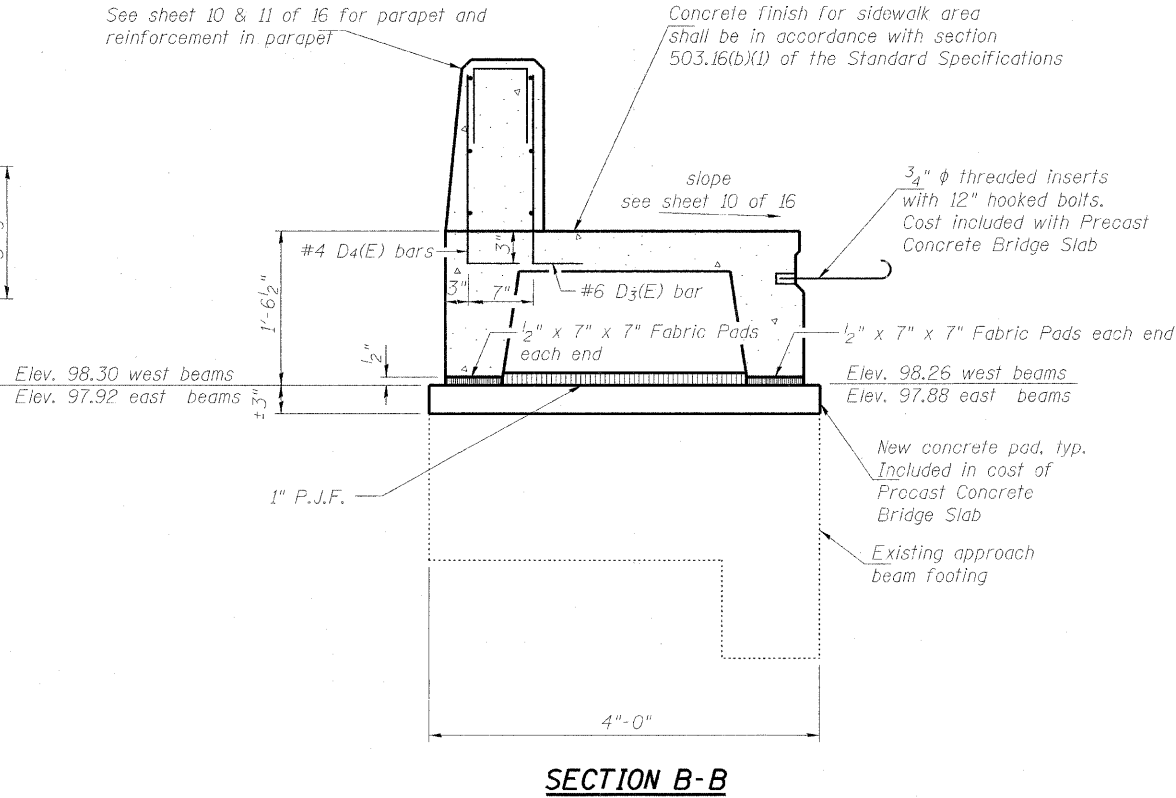
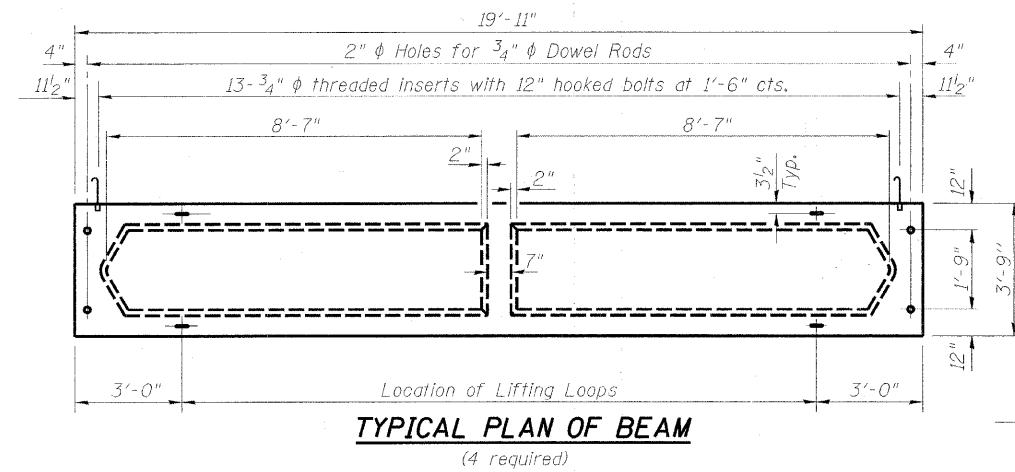
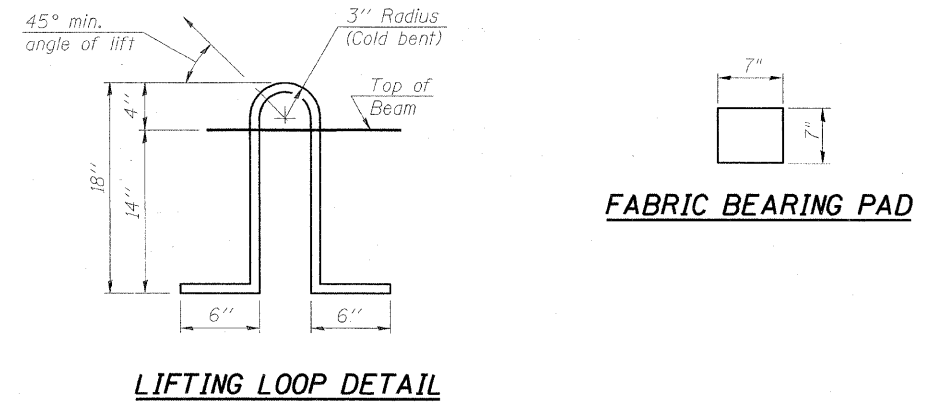
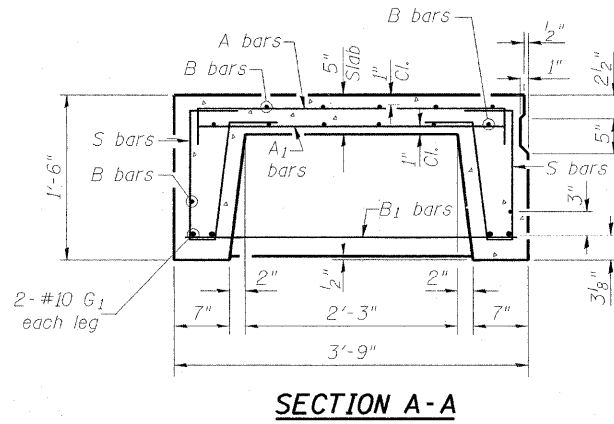
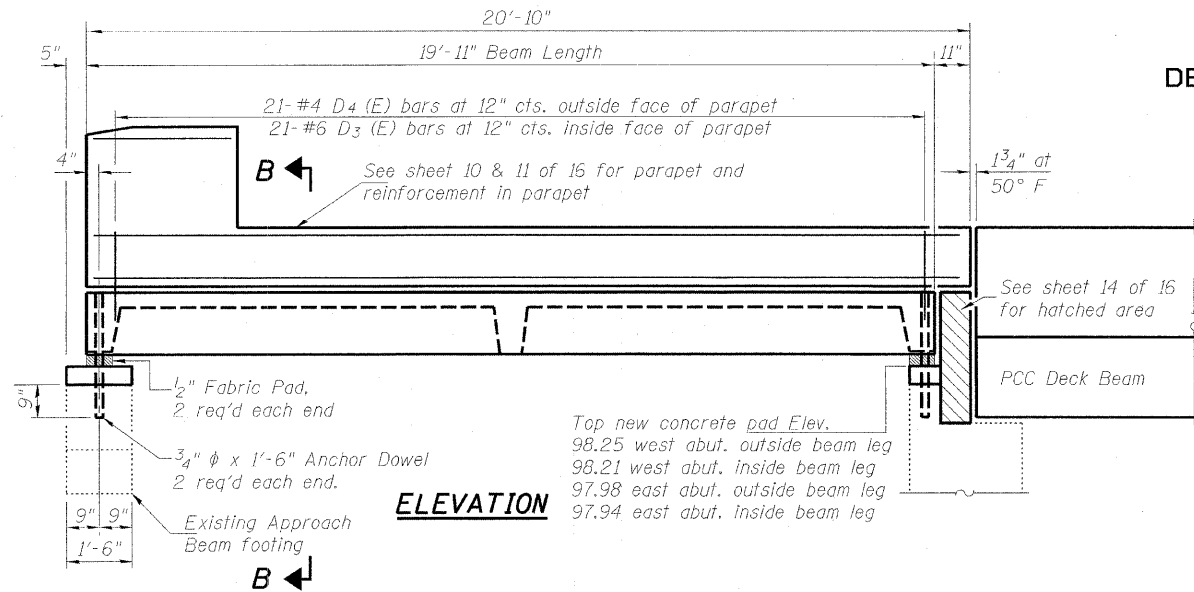


STATE OF ILLINOIS  
DEPARTMENT OF TRANSPORTATION

ROUTE NO.	SECTION	COUNTY	TOTAL SHEETS	SHEET NO.	SHEET NO. 8 16 SHEETS
FAP 311	625X-B-R-1	DuPage	29	16	
FED. ROAD DIST. NO. 7	ILLINOIS	FED. AID PROJECT	Contract #60C53		

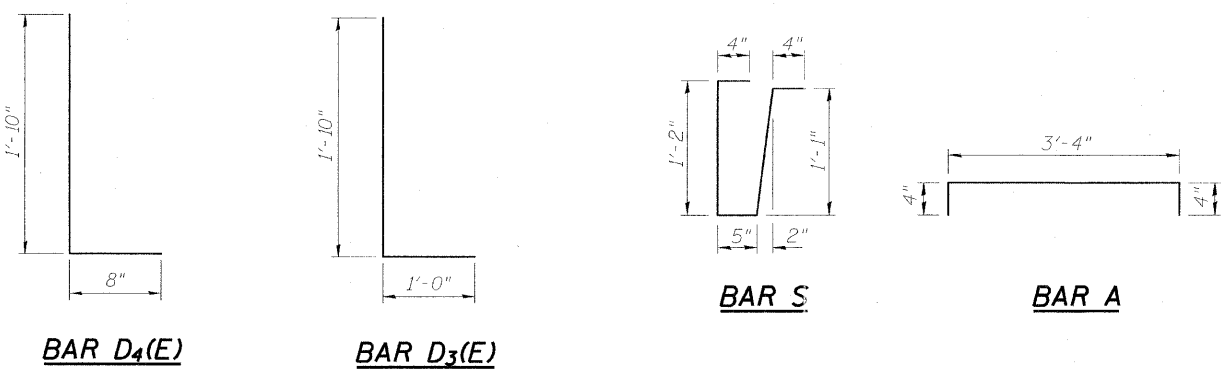
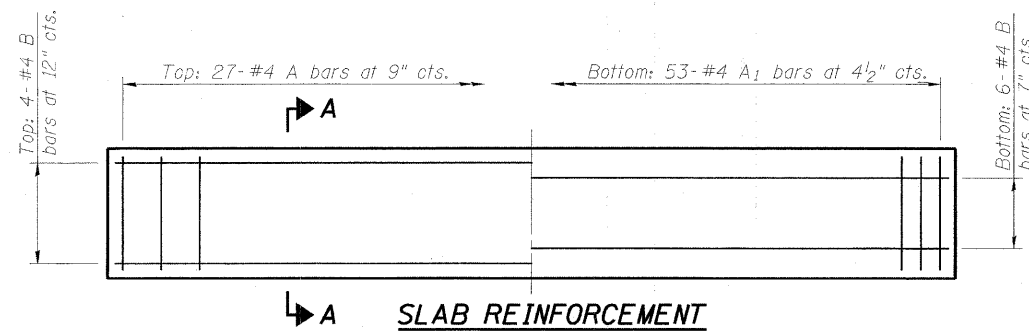
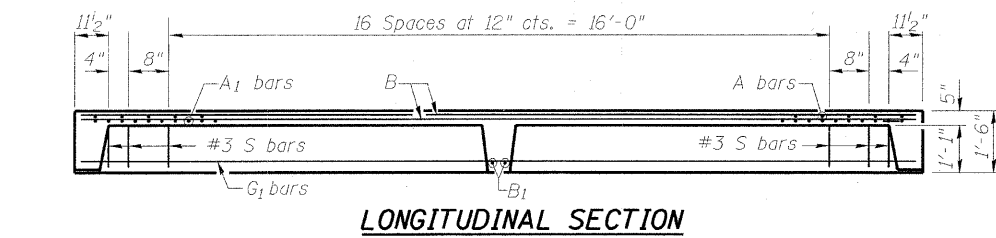


**NOTES**

Unless otherwise approved by the Engineer, each lifting loop shall be 2-1/2 inch diameter non-galvanized high strength low relaxation, 7-wire, Grade 270 wire strands. Cost of reinforcement and accessories cast into slab unit, of bearing pads, furnishing, drilling for, placing and grouting anchor dowels, threaded inserts and hooked bolts shall be included in the cost of Precast Concrete Bridge Slab. Tack welding of stirrups to bottom longitudinal reinforcement bars will not be permitted except as otherwise authorized in writing by the Engineer. Reinforcing steel shall conform to ASTM A 706 Gr. 60 (IL Modified). The bearing seat surfaces shall be adjusted by shimming to assure firm and even bearing. Two 1/2 inch fabric adjusting shims of the dimensions of the bearing pad shall be provided for each bearing. Corrosion Inhibitor, per Article 1020.05(b)(12) of the Standard Specifications, shall be used in the concrete for Precast Concrete Bridge Slab.

**BILL OF MATERIAL**

Material	Sq. Ft.	Quantity
Precast Concrete Bridge Slab		299



DESIGNED	DDB
CHECKED	LLV
DRAWN	MGM
CHECKED	DDB

**PRECAST APPROACH BEAMS**  
**F.A.P. 311 (US RTE. 34)**  
**OVER W BRANCH OF DU PAGE RIVER**  
**SECTION 625X-B-R-1,**  
**DU PAGE COUNTY, STA. 1701+11**  
**STRUCTURE NO. 022-0040**

**STS CONSULTANTS**  
111 NE Jefferson Ave.  
Peoria, Illinois 61602  
Ph(309)676-8464  
FAX(309)676-5445  
IL Design Firm Reg. No. 184-001518