

F.A.I. RTE.	SECTION	COUNTY	TOTAL SHEETS	SHEET NO.
I55	2007-042 I	WILL	29	1
FED. ROAD DIST. NO.	ILLINOIS	CONTRACT NO. 60D32		

**STATE OF ILLINOIS
DEPARTMENT OF TRANSPORTATION
DIVISION OF HIGHWAYS**

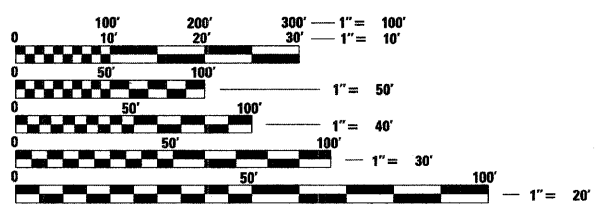
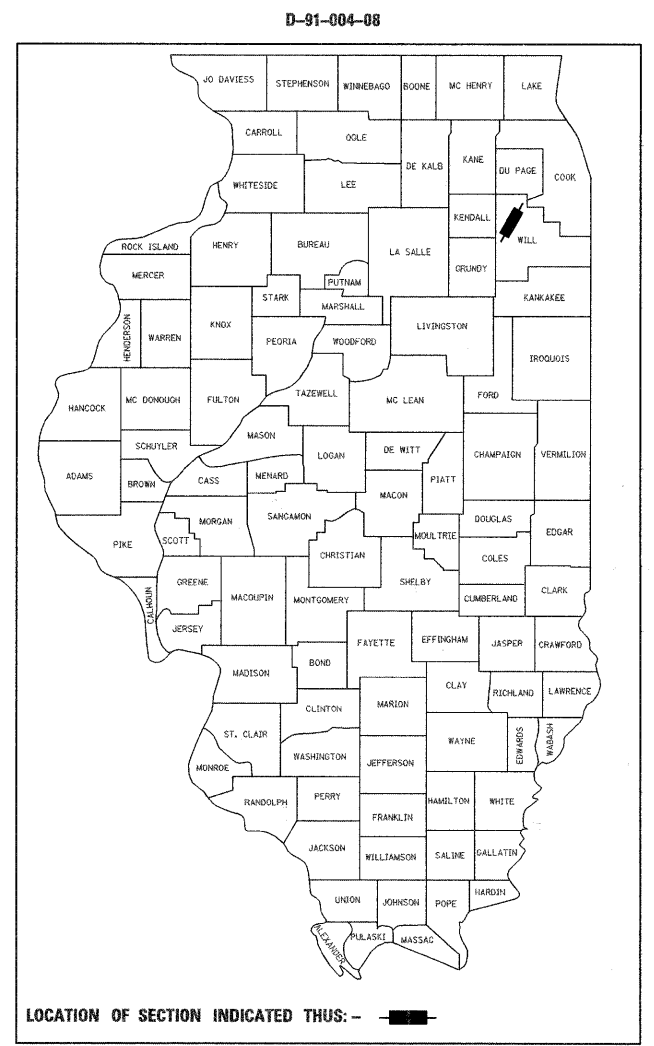
**PROPOSED
HIGHWAY PLANS**

**FAI ROUTE 55 (INTERSTATE 55)
SECTION: 2007-042 I
WILL/GRUNDY COUNTY LINE TO THE DES PLAINES RIVER
HIGH TENSION MEDIAN CABLE INSTALLATION
PROJECT: HSIP-055-6(231)-234
WILL COUNTY
C-91-004-08
R 9 E**

FOR INDEX OF SHEETS, SEE SHEET NO. 2

TRAFFIC DATA
ADT (2005)= 21,600 TO 67,100
POSTED SPEED LIMIT = 65 MPH

THE PROJECT IS LOCATED IN THE CITY OF BRAIDWOOD AND VILLAGES OF CHANNAHON, DIAMOND, GODLEY AND WILMINGTON

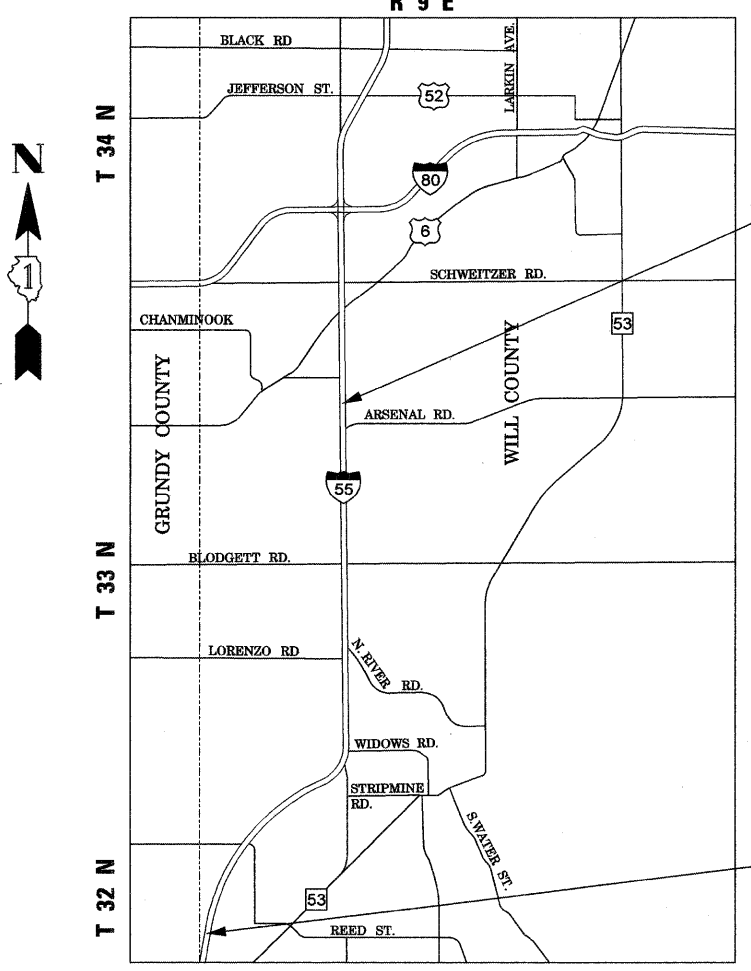


FULL SIZE PLANS HAVE BEEN PREPARED USING STANDARD ENGINEERING SCALES. REDUCED SIZED PLANS WILL NOT CONFORM TO STANDARD SCALES. IN MAKING MEASUREMENTS ON REDUCED PLANS, THE ABOVE SCALES MAY BE USED.

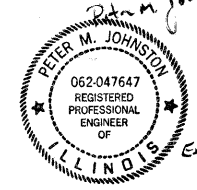
J.U.L.I.E.
JOINT UTILITY LOCATION INFORMATION FOR EXCAVATION
1-800-892-0123
OR 811

**PROJECT ENGINEER PETER JOHNSTON, P.E. (773) 399-0112
PROJECT MANAGER KEN ENG, P.E. (847) 705-4247**

CONTRACT NO. 60D32



PROJECT BEGINS
STA. 1287+00



PROJECT ENDS
STA. 1939+50

GRAEF, ANHALT, SCHLOEMER & ASSOCIATES, INC.
ENGINEERS & SCIENTISTS
8501 W. Higgins Road, Suite 280
Chicago, Illinois 60631
(773) 399-0112

**STATE OF ILLINOIS
DEPARTMENT OF TRANSPORTATION
DIVISION OF HIGHWAYS**

SUBMITTED FEBRUARY 13, 2008

Diana M. O'Keefe DEPUTY DIRECTOR OF HIGHWAYS, REGION ENGINEER

March 21, 2008

Eric E. Harrell ENGINEER OF DESIGN AND ENVIRONMENT

March 21, 2008

Christine M. Reed DIRECTOR OF HIGHWAYS, CHIEF ENGINEER

**PRINTED BY THE AUTHORITY
OF THE STATE OF ILLINOIS**

**CHANNAHON, REED AND WILMINGTON TOWNSHIPS
GROSS AND NET LENGTH OF PROJECT = 65,250 FEET (12.358 MILES)**