

F.A.U. RTE.	SECTION	COUNTY	TOTAL SHEETS	SHEET NO.
1472	2007-045 I	COOK	12	1
FED. ROAD DIST. NO.	ILLINOIS	CONTRACT NO. 60D35		

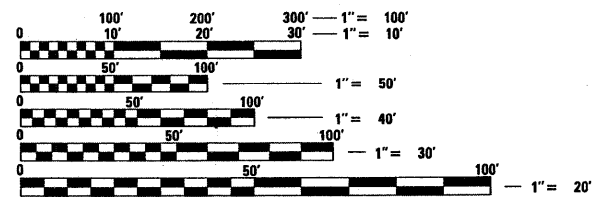
STATE OF ILLINOIS  
DEPARTMENT OF TRANSPORTATION  
DIVISION OF HIGHWAYS

**PROPOSED  
HIGHWAY PLANS**

F.A.U. 1472: FOREST AVENUE  
OVER THE DES PLAINES RIVER  
SECTION: 2007-045 I  
SCOUR COUNTERMEASURES  
COOK COUNTY  
C-91-007-08

FOR INDEX OF SHEETS, SEE SHEET NO. 2

IMPROVEMENT LOCATED IN THE VILLAGE OF RIVERSIDE.

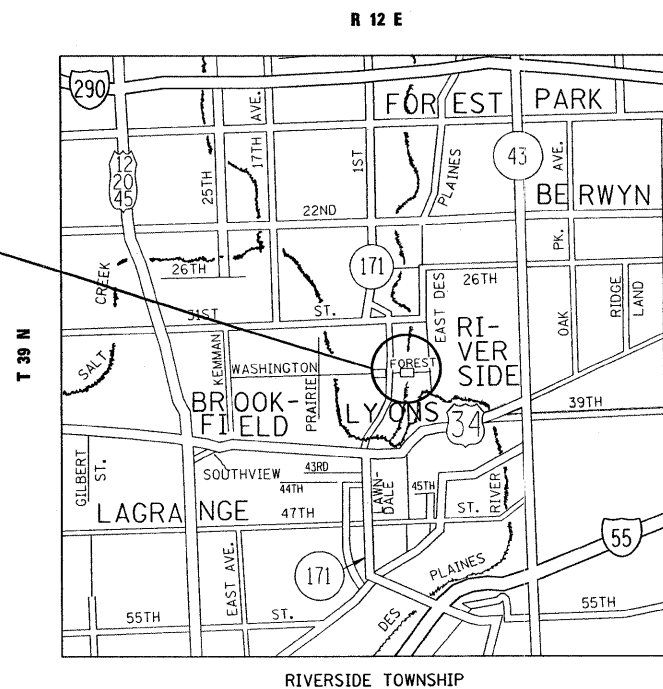


FULL SIZE PLANS HAVE BEEN PREPARED USING STANDARD ENGINEERING SCALES. REDUCED SIZED PLANS WILL NOT CONFORM TO STANDARD SCALES. IN MAKING MEASUREMENTS ON REDUCED PLANS, THE ABOVE SCALES MAY BE USED.

J.U.L.I.E.  
JOINT UTILITY LOCATION INFORMATION FOR EXCAVATION  
1-800-892-0123  
OR 811

LOCATION OF PROJECT  
FOREST AVENUE OVER  
THE DES PLAINES RIVER  
SN 016-0874

TRAFFIC DATA  
SPEED LIMIT = 25 MPH  
2006 ADT = 3,200



PROJECT ENGINEER: J.P. CHANG (847) 705 4432  
PLAN PREPARATION ENGINEER: KEN ENG (847) 705 4247

CONTRACT NO. 60D35

STATE OF ILLINOIS  
DEPARTMENT OF TRANSPORTATION  
DIVISION OF HIGHWAYS

SUBMITTED FEBRUARY 7, 20 08

*Diane M. O'Keefe*  
DEPUTY DIRECTOR OF HIGHWAYS, REGION ENGINEER

March 21, 20 08

*Eric E. Haral*  
ENGINEER OF DESIGN AND ENVIRONMENT

March 21, 20 08

*Christine M. Reed*  
DIRECTOR OF HIGHWAYS, CHIEF ENGINEER

PRINTED BY THE AUTHORITY  
OF THE STATE OF ILLINOIS