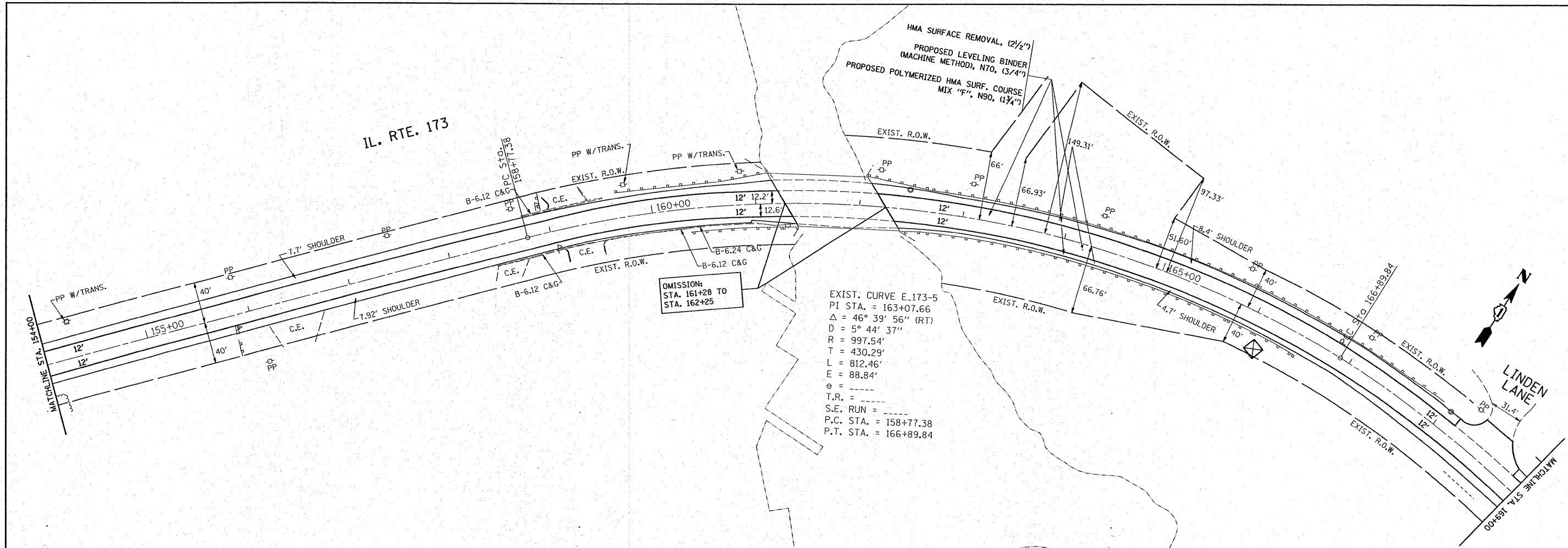


PLAN SURVEYED BY DATE
 PLOTTED BY DATE
 NOTE BOOK NO. RT. OF WAY CHECKED
 NO. CAD FILE NAME

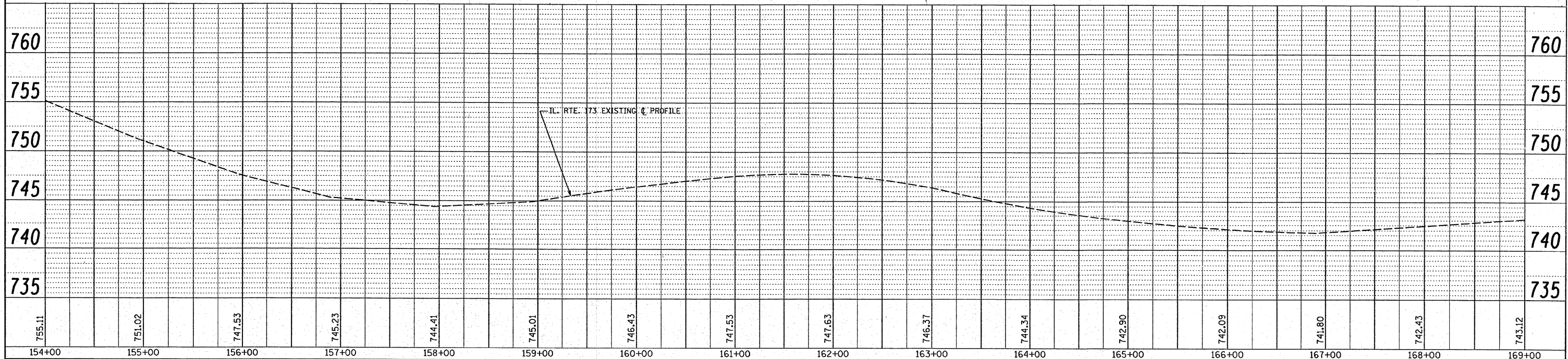
PROFILE SURVEYED BY DATE
 PLOTTED BY DATE
 NOTE BOOK NO. RT. OF WAY CHECKED
 NO. STRUCTURE NOTATIONS CHK'D



OMISSION:
 STA. 161+28 TO
 STA. 162+25

EXIST. CURVE E-173-5
 PI STA. = 163+07.66
 $\Delta = 46^\circ 39' 56''$ (RT)
 $D = 5^\circ 44' 37''$
 $R = 997.54'$
 $T = 430.29'$
 $L = 812.46'$
 $E = 88.84'$
 $e =$
 $T.R. =$
 $S.E. RUN =$
 $P.C. STA. = 158+77.38$
 $P.T. STA. = 166+89.84$

NOTE: LIMIT OF RESURFACING ON SIDE-STREETS THROUGH OUT THE IMPROVEMENT SHALL BE TO THE RADIUS OF RETURN OR AS DIRECTED BY THE ENGINEER.
 FOR SUPERELEVATION CORRECTION USE LEVELING BINDER



FILE NAME =	USER NAME =	DESIGNED -	REVISED -	STATE OF ILLINOIS				F.A.P.	SECTION	COUNTY	TOTAL SHEETS
ci:\projects\101108\sh_rdw.dgn	drivokasn	DRAWN -	REVISED -	DEPARTMENT OF TRANSPORTATION				303	049-I	LAKE	49
		CHECKED -	REVISED -					2007			15
		DATE -	REVISED -					SCALE: 50H/5V:1"		CONTRACT NO. 60D39	
								SHEET NO. OF SHEETS		FED. ROAD DIST. NO. 1 ILLINOIS FED. AID PROJECT	