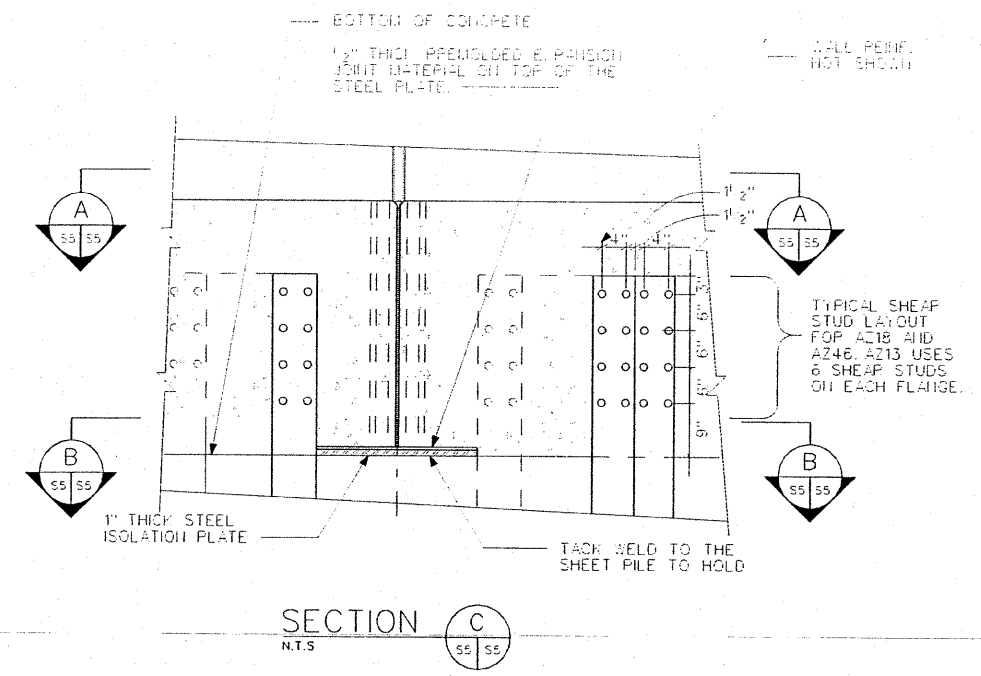
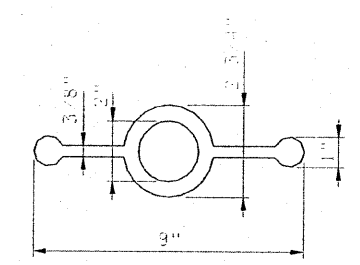


FOR INFORMATION ONLY

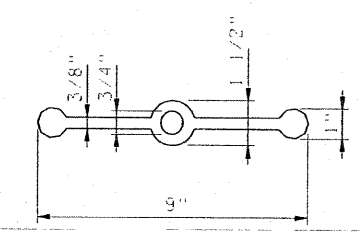


TYPE A

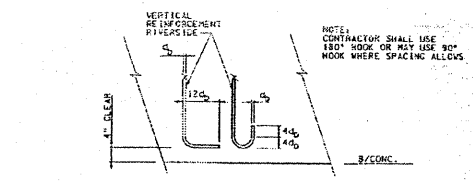


FOR EXPANSION WALL JOINTS (E.J.)

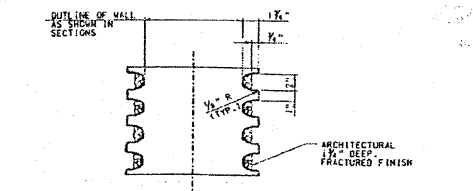
TYPE B



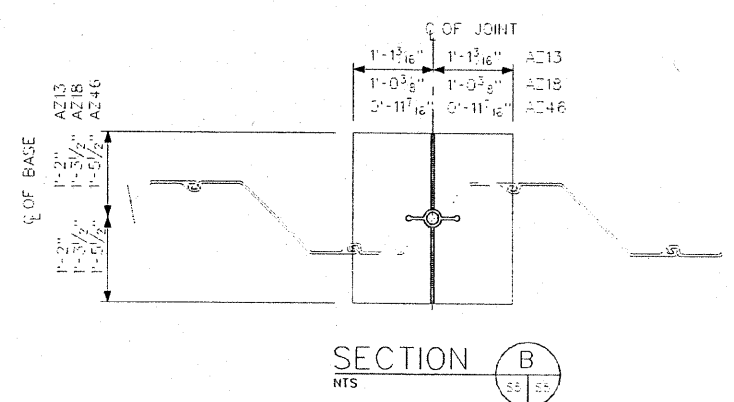
FOR CONTRACTION WALL JOINTS (C.C.J.)



DETAIL SHOWING STANDARD 180° AND 90° HOOK (LOOKING @ RIVERSIDE FACE OF WALL) N.T.S.

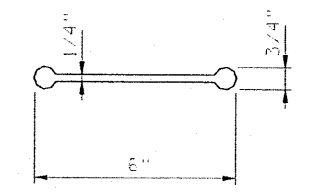


PARTIAL PLAN SHOWING FRACTURED FINISHED WALL N.T.S.



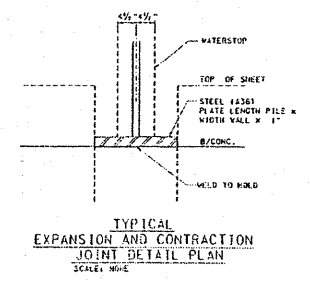
SECTION B N.T.S.

TYPE C

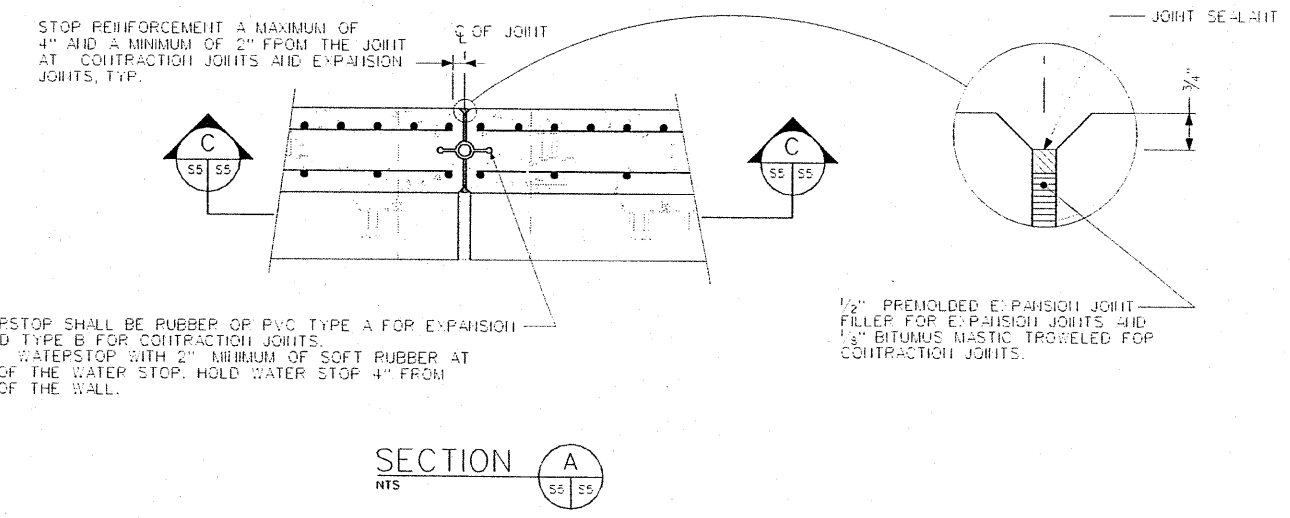


FOR CONSTRUCTION JOINTS

WATERSTOP DETAILS N.T.S.



TYPICAL EXPANSION AND CONTRACTION JOINT DETAIL PLAN SCALE: NONE



SECTION A N.T.S.

THE WATERSTOP SHALL BE RUBBER OR PVC TYPE A FOR EXPANSION JOINTS AND TYPE B FOR CONTRACTION JOINTS. PLUG THE WATERSTOP WITH 2" MINIMUM OF SOFT RUBBER AT THE TOP OF THE WATER STOP. HOLD WATER STOP 4" FROM THE TOP OF THE WALL.

1/2" PREMOLDED EXPANSION JOINT FILLER FOR EXPANSION JOINTS AND 1/8" BITUMUS MASTIC TROWELED FOR CONTRACTION JOINTS.

TYPICAL EXPANSION/CONTRACTION JOINT DETAILS

SYMBOL	AMENDMENT	DESCRIPTION	DATE	APPROVED SYMBOL

DESIGNED BY: J.P.	DATE: 02/05/2008
DRAWN BY: M.A.N.	SCALE: AS SHOWN
CHECKED BY: S.R.T.	DRAWING CODE: DESP37-505-1.DGN
REVIEWED BY: J.J.S.	SOLICITATION NUMBER

U.S. ARMY ENGINEER DISTRICT
CORPS OF ENGINEERS
CHICAGO, ILLINOIS

1007 FAP RT 374 (IL
ROUTE 374), MILWAUKEE AVE
SECTION 3260F-R-1
FLOODWALL
SHEET PILE WALLS
TYPICAL SECTIONS

SHEET REFERENCE NUMBER:
S-05
SHEET 277 OF 279

