

22+1=23

F.A.I. RTE.	SECTION	COUNTY	TOTAL SHEETS	SHEET NO.
94		COOK	22	1
FED. ROAD DIST. NO. ILLINOIS FED. AID PROJECT			D-91-421-01 • (1516.1, 1717 & 1818) I-5 62934	

### INDEX OF SHEETS

FOR INDEX OF SHEETS, SEE SHEET NO. 2

PROJECT LOCATED IN THE CITY OF CHICAGO

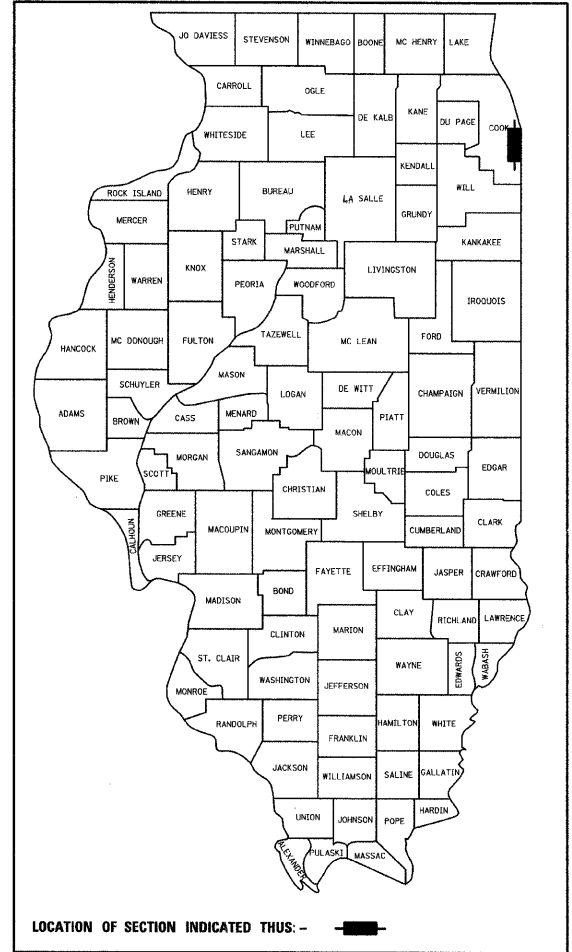
CROSS STREETS AND FRONTAGE ROADS:	ADT
67TH STREET	14,000
75TH STREET	17,700
76TH STREET	12,000
S. LAFAYETTE AVENUE	6,800
S. STATE STREET	15,100

# STATE OF ILLINOIS DEPARTMENT OF TRANSPORTATION DIVISION OF HIGHWAYS

## PROPOSED HIGHWAY PLANS

### F.A.I. ROUTE 94 (DAN RYAN EXPRESSWAY) SECTION (1516.1, 1717 & 1818) I-5 76TH STREET TO 67TH STREET MEDIAN PLANTERS ALONG 67TH, 75TH AND 76TH STREETS

**COOK COUNTY**  
**C-91-170-05**  
R. 14 E.



STATE OF ILLINOIS  
DEPARTMENT OF TRANSPORTATION  
DIVISION OF HIGHWAYS

SUBMITTED JANUARY 15, 20 08

*Dianna M. O'Keefe* DEPUTY DIRECTOR OF HIGHWAYS, REGION ENGINEER

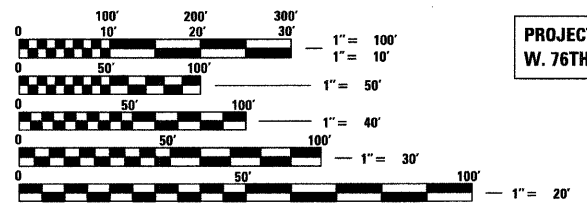
March 21, 20 08

*Eric E. Harneff* ENGINEER OF DESIGN AND ENVIRONMENT

March 21, 20 08

*Christine M. Reed* DIRECTOR OF HIGHWAYS, CHIEF ENGINEER

CONTRACT 17G

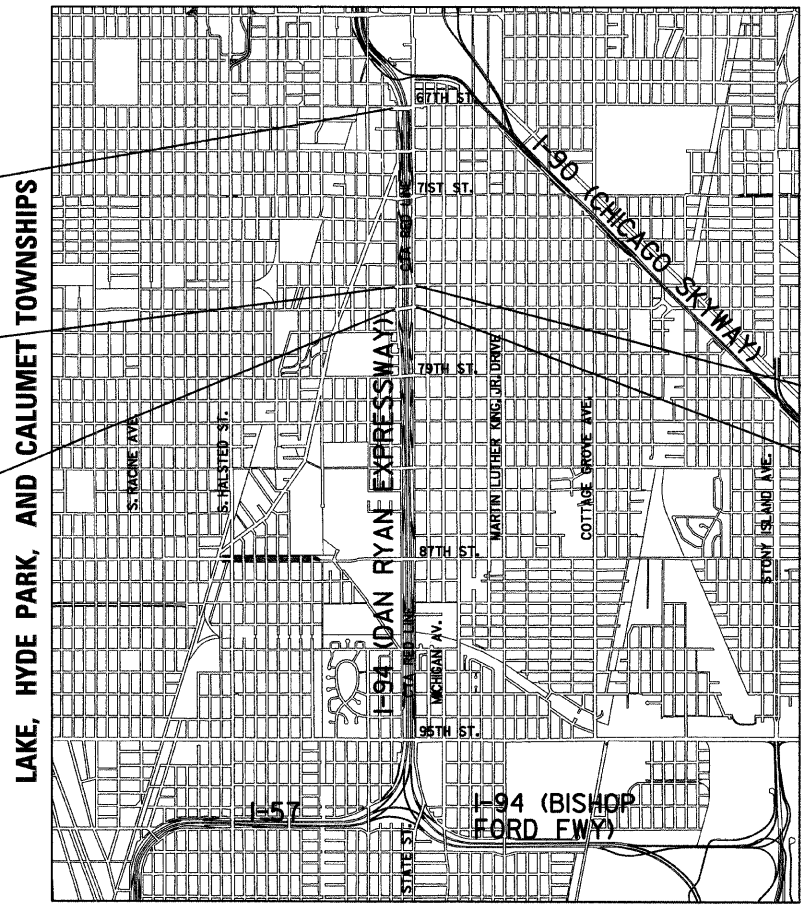


FULL SIZE PLANS HAVE BEEN PREPARED USING STANDARD ENGINEERING SCALES; REDUCED SIZED PLANS WILL NOT CONFORM TO STANDARD SCALES. IN MAKING MEASUREMENTS ON REDUCED PLANS, THE ABOVE SCALES MAY BE USED

DIGGER:  
CHICAGO UTILITY ALERT NETWORK  
(312) 744-7000

CTA CONTACT:  
DAVID HEARD  
MANAGER, CONSTRUCTION MANAGEMENT OVERSIGHT  
(312) 681-3862

CONTRACT NO. 62934



PROJECT LOCATION: INTERSECTION OF W. 67TH ST. AND S. LAFAYETTE AVE.

PROJECT LOCATION: INTERSECTION OF W. 75TH ST. AND S. LAFAYETTE AVE.

PROJECT LOCATION: INTERSECTION OF W. 76TH ST. AND S. LAFAYETTE AVE.

PROJECT LOCATION: INTERSECTION OF E. 75TH ST. AND S. STATE ST.

PROJECT LOCATION: INTERSECTION OF E. 76TH ST. AND S. STATE ST.

#### LOCATION MAP

GROSS LENGTH OF PROJECT = 996.34 FT. = 0.19 MI.  
NET LENGTH OF PROJECT = 996.34 FT. = 0.19 MI.

Signed *Dean A. Kieseling*  
Dean A. Kieseling, P.E., Il. Lic. No. 32957  
Date 01-30-08  
FOR SHEETS 1-6, AND 17-22

Signed *John C. Murillo*  
John C. Murillo, P.E., Il. Lic. No. 062-052397  
Date 01-30-08  
FOR SHEETS 7-16

**TYLIN INTERNATIONAL**  
PRINTED BY THE AUTHORITY OF THE STATE OF ILLINOIS

DISTRICT ONE DESIGN / PROJECT MANAGER:  
BRIAN KUTTAB (847) 705 - 4431



PROJECT: MEDIAN PLANTERS ALONG 67TH, 75TH & 76TH STREETS  
COOK COUNTY / CITY OF CHICAGO

F.A.I. RTE.	SECTION	COUNTY	TOTAL SHEETS	SHEET NO.
94	*	COOK	22	3
STA.	TO STA.			
FED. ROAD DIST. NO.	ILLINOIS	FED. AID PROJECT		
* (1516.1, 1717 & 1818) I-5			62934	

SUMMARY OF QUANTITIES

CODE NUMBER	ITEM DESCRIPTION	UNIT	URBAN TOTAL	100% STATE		100% CITY OF CHICAGO	
				DAN RYAN Y003		DAN RYAN Y003	
20101000	TEMPORARY FENCE	FOOT	596	596			
20201200	REMOVAL AND DISPOSAL OF UNSUITABLE MATERIAL	CU YD	90	90			
28000510	INLET FILTER	EACH	1	1			
31101400	SUB-BASE GRANULAR MATERIAL, TYPE B 6"	SQ YD	386	386			
35300510	PORTLAND CEMENT CONCRETE BASE COURSE 10 1/2"	SQ YD	95	95			
40600200	BITUMINOUS MATERIALS (PRIME COAT)	TON	1	1			
40603340	HOT-MIX ASPHALT SURFACE COURSE, MIX "D", N70	TON	22	22			
42001300	PROTECTIVE COAT	SQ YD	380	341		39	
42400200	PORTLAND CEMENT CONCRETE SIDEWALK 5 INCH	SQ FT	20			20	
44000500	COMBINATION CURB AND GUTTER REMOVAL	FOOT	4			4	
44000600	SIDEWALK REMOVAL	SQ FT	20			20	
56104600	WATER VALVES 2"	EACH	5			5	
56200900	WATER SERVICE LINE 2 1/2"	FOOT	58			58	
60618390	CONCRETE MEDIAN SURFACE, CORRIGATED	SQ FT	909	833		76	
67000500	ENGINEER'S FIELD OFFICE, TYPE B	CAL MO	12	12			
67100100	MOBILIZATION	L SUM	1	1			
70101800	TRAFFIC CONTROL AND PROTECTION, (SPECIAL)	L SUM	1	1			
70103816	TRAFFIC CONTROL SURVEILLANCE	CAL MO	6	6			
70106800	CHANGEABLE MESSAGE SIGN	CAL MO	12	12			
70300520	PAVEMENT MARKING TAPE, TYPE III 4"	FOOT	2116	2116			
70301000	WORK ZONE PAVEMENT MARKING REMOVAL	SQ FT	699	699			
* 78000100	THERMOPLASTIC PAVEMENT MARKING - LETTERS AND SYMBOLS	SQ FT	78	78			
* 78000200	THERMOPLASTIC PAVEMENT MARKING - LINE 4"	FOOT	2017	2017			
* 78000400	THERMOPLASTIC PAVEMENT MARKING - LINE 6"	FOOT	231	231			
* 78000600	THERMOPLASTIC PAVEMENT MARKING - LINE 12"	FOOT	73	73			
* 78000650	THERMOPLASTIC PAVEMENT MARKING - LINE 24"	FOOT	48	48			
* 78003110	PREFORMED PLASTIC PAVEMENT MARKING, TYPE B - LINE 4"	FOOT	136	136			
78300100	PAVEMENT MARKING REMOVAL	SQ FT	648	648			
A2018730	TREE, ULMUS CARPINIFOLIA NEW HORIZON (NEW HORIZON SMOOTHLEAF ELM), 3" CALIPER, BALLED <sup>AND</sup> BURLAPPED	EACH	4	4			
A2002010	TREE, AESCULUS FLAVA (YELLOW BUCKEYE), 3" CALIPER, BALLED <sup>AND</sup> BURLAPPED	EACH	7	7			
A2008750	TREE, ULMUS X PATRIOT (PATRIOT ELM), 3" CALIPER, TREE FORM, BALLED <sup>AND</sup> BURLAPPED	EACH	2	2			
C2009965	SHRUB, SPIREA X BUMALDA MAGIC CARPET (MAGIC CARPET BUMALD SPIREA), 5-GALLON CONTAINER	EACH	691	691			
C2013265	SHRUB, WEIGELA FLORIDA (MIDNIGHT WINE OLD FASHIONED WEIGELA), 5-GALLON CONTAINER	EACH	262	262			
K0030400	PERENNIAL PLANTS, DAYLILIES	UNIT	6.20	6.20			
X0301407	PERENNIAL PLANTS, GALLON POT	UNIT	74.19	74.19			

\* - SPECIALTY ITEMS

TYLIN INTERNATIONAL

REVISIONS	
NAME	DATE

ILLINOIS DEPARTMENT OF TRANSPORTATION  
F.A.I. 94 (DAN RYAN EXPRESSWAY)  
SUMMARY OF QUANTITIES  
SHEET 1 OF 2

SCALE: NONE  
DATE: JANUARY 30, 2008  
DRAWN BY: JDF  
CHECKED BY: JPM

1/29/2008 11:59:49 AM

PROJECT: MEDIAN PLANTERS ALONG 67TH, 75TH & 76TH STREETS  
 COOK COUNTY / CITY OF CHICAGO

F.A.I. RTE.	SECTION	COUNTY	TOTAL SHEETS	SHEET NO.
94	*	COOK	22	4
STA.		TO STA.		
FED. ROAD DIST. NO.		ILLINOIS	FED. AID PROJECT	
(1516.I, 1717 & 1818) I-5		62934		

SUMMARY OF QUANTITIES

CODE NUMBER	ITEM DESCRIPTION	UNIT	URBAN TOTAL	100% STATE		100% CITY OF CHICAGO	
				DAN RYAN Y003		DAN RYAN Y003	
X0322256	TEMPORARY INFORMATION SIGNING	SQ FT	52	52			
X0323426	SEDIMENT CONTROL, DRAINAGE STRUCTURE INLET FILTER CLEANING	EACH	6	6			
X0324491	CONCRETE MEDIAN WALL - 18" WIDE	FOOT	652	652			
X0324493	CONCRETE MEDIAN SURFACE (SPECIAL)	SQ FT	1086	856		230	
X0324525	PLANTING MIX FURNISH AND PLACE 36"	SQ YD	602	602			
X0325102	INSPECTION PIPE 4 INCH	EACH	4			4	
X0325103	WATER METER IN VAULT, 2 INCH	EACH	5			5	
X0325104	WATER TAP, 2 INCH	EACH	5			5	
X0325105	IRRIGATION SYSTEM	SQ YD	1195			1195	
X0325106	IRRIGATION SYSTEM FALL SHUT-DOWN	EACH	5			5	
X0325107	IRRIGATION SYSTEM SPRING START-UP	EACH	5			5	
X0325108	BACKFLOW PREVENTER (RPZ), 2 INCH	EACH	5			5	
X0325109	POROUS GRANULAR MATERIAL	CU YD	170	170			
X0325027	MEDIAN AND PAVEMENT REMOVAL (SPECIAL)	SQ YD	932	897		35	
X0656300	PAVEMENT REMOVAL AND REPLACEMENT	SQ YD	7			7	
XX001363	PERENNIAL PLANT, NARCISSUS	UNIT	496.90	496.90			
XX002258	STRUCTURES TO BE ADJUSTED	EACH	5	5			
XX104800	COMBINATION CONCRETE CURB AND GUTTER, TYPE B-V.12	FOOT	4.0			4.0	
Z0013798	CONSTRUCTION LAYOUT	L SUM	1	1			
Z0027800	GEO TECHNICAL FABRIC	SQ YD	594	594			

\* - SPECIALTY ITEMS

TYLIN INTERNATIONAL

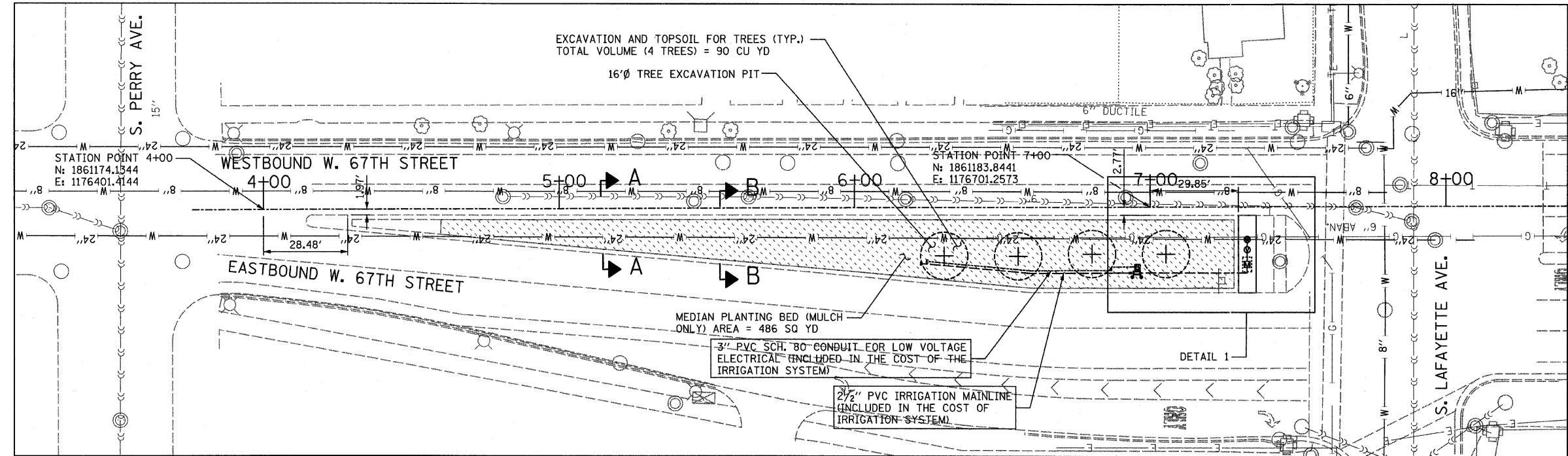
REVISIONS	
NAME	DATE

ILLINOIS DEPARTMENT OF TRANSPORTATION  
 F.A.I. 94 (DAN RYAN EXPRESSWAY)  
 SUMMARY OF QUANTITIES  
 SHEET 2 OF 2

SCALE: NONE  
 DATE: JANUARY 30, 2008  
 DRAWN BY: JDF  
 CHECKED BY: JPM

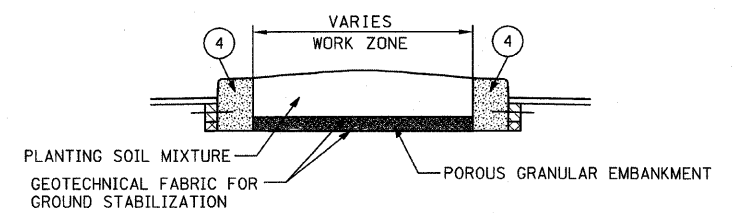
1/29/2008 10:59:49 AM

F.A.I. RTE.	SECTION	COUNTY	TOTAL SHEETS	SHEET NO.
94		COOK	22	5
STA.	TO STA.			
FED. ROAD DIST. NO.	ILLINOIS	FED. AID PROJECT		
(1516.1, 1717 & 1818) I-5			62934	

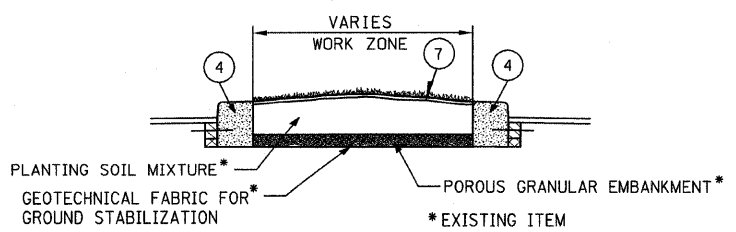


- NOTES:**
- THE EXISTING MEDIAN PLANTING BED CONSISTS OF 18" PLANTING MIX AND 8" POROUS GRANULAR EMBANKMENT (DEPTHS ARE APPROXIMATE) AND SHALL REMAIN. THE PROPOSED PLANTING BED AT TREE LOCATIONS SHALL CONSIST OF 36" PLANTING MIX. SEE PROPOSED LANDSCAPE MEDIAN SECTION A-A AND B-B FOR ADDITIONAL DETAIL. EXCAVATION AT THE FOUR TREE LOCATIONS SHALL BE PAID FOR AS REMOVAL AND DISPOSAL OF UNSUITABLE MATERIAL (90 CU YD).
  - THE CONTRACTOR SHALL PROVIDE ALL NECESSARY TRAFFIC CONTROL REQUIRED FOR THE DURATION OF THE PROJECT OR AS DIRECTED BY THE ENGINEER. THE COST OF INDIVIDUAL IDOT TRAFFIC CONTROL STANDARDS SHALL NOT BE PAID FOR SEPARATELY, BUT SHALL BE INCLUDED IN "TRAFFIC CONTROL AND PROTECTION (SPECIAL)".
  - ADVANCE SIGNING AND TAPERS FOR TEMPORARY DAYTIME LANE CLOSURES SHALL BE IN ACCORDANCE WITH IDOT STANDARD 701601 OR AS DIRECTED BY THE ENGINEER.
  - WORK ZONE MAINTENANCE OF TRAFFIC SHALL BE IN ACCORDANCE WITH IDOT STANDARD 701701 OR AS DIRECTED BY THE ENGINEER.
  - PLACEMENT OF THE BATTERY OPERATED IRRIGATION CONTROLLER SHALL BE COORDINATED WITH TREE PLACEMENT.

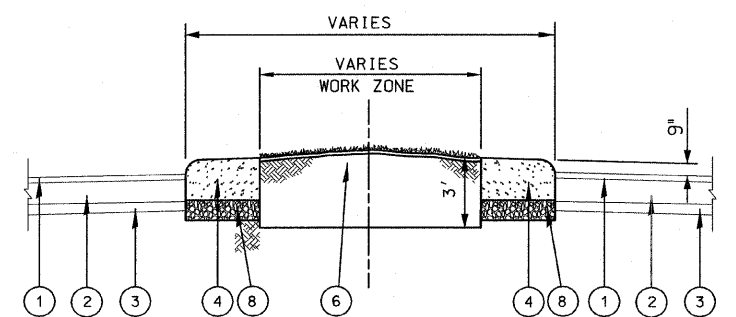
**MEDIAN PLANTER ALONG WEST 67TH ST. AT LAFAYETTE AVE.**  
SCALE: 1" = 20'



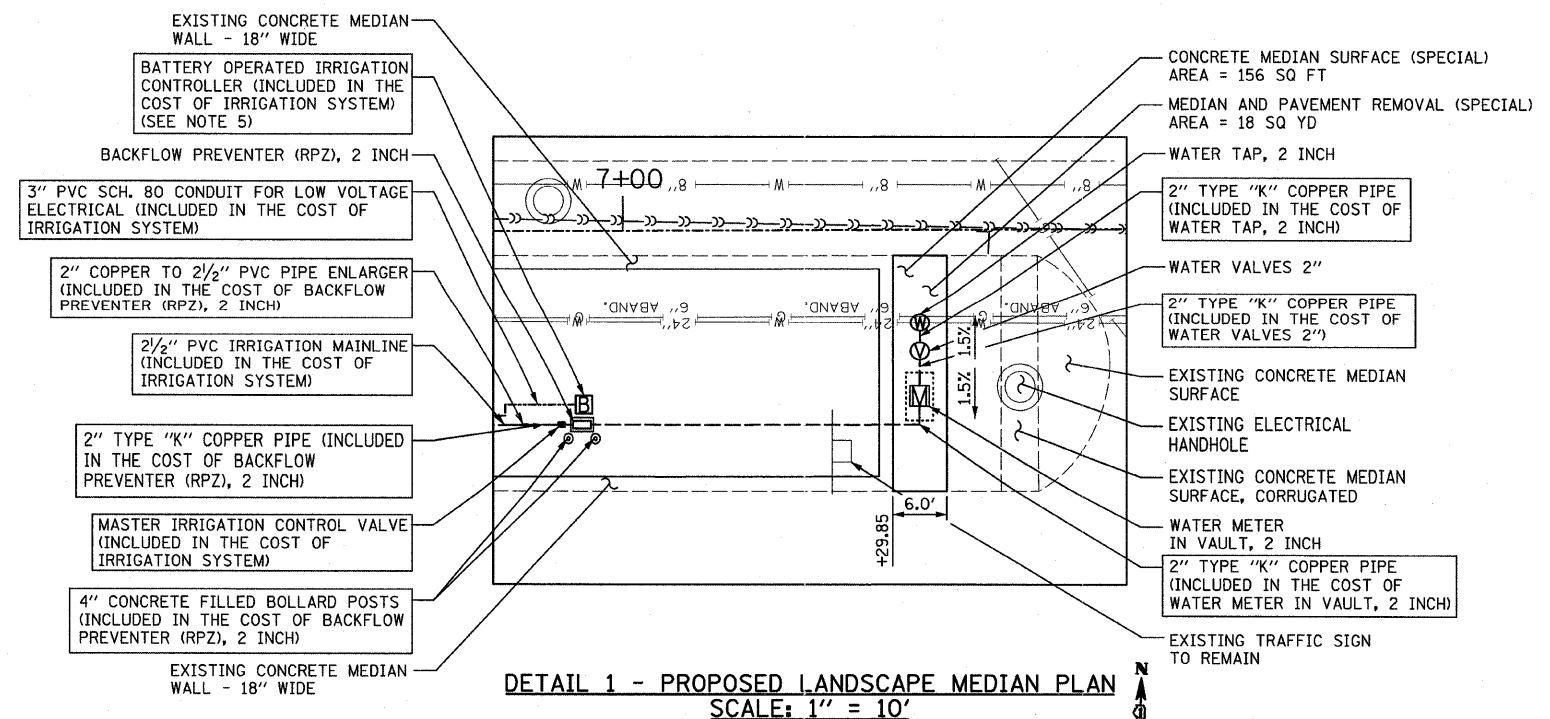
**A-A & B-B - EXISTING LANDSCAPE MEDIAN SECTION**  
NOT TO SCALE



**A-A - PROPOSED LANDSCAPE MEDIAN SECTION**  
NOT TO SCALE



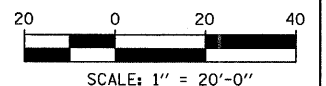
**B-B - PROPOSED LANDSCAPE MEDIAN SECTION AT PROPOSED TREES**  
NOT TO SCALE



**DETAIL 1 - PROPOSED LANDSCAPE MEDIAN PLAN**  
SCALE: 1" = 10'

**LEGEND**

- |  |  |
|--|--|
| ① EXISTING HOT-MIX ASPHALT SURFACE COURSE, 3"± | ⑤ PROPOSED INSPECTION PIPE 4"                    |
| ② EXISTING PCC BASE COURSE 10"±                | ⑥ PROPOSED PLANTING MIX FURNISH AND PLACE 36"    |
| ③ EXISTING SUB-BASE GRANULAR MATERIAL          | ⑦ PROPOSED MULCH, 4" (AND VARIES)                |
| ④ EXISTING CONCRETE MEDIAN WALL - 18" WIDE     | ⑧ EXISTING SUB-BASE GRANULAR MATERIAL, TYPE B 6" |



REVISIONS	
NAME	DATE

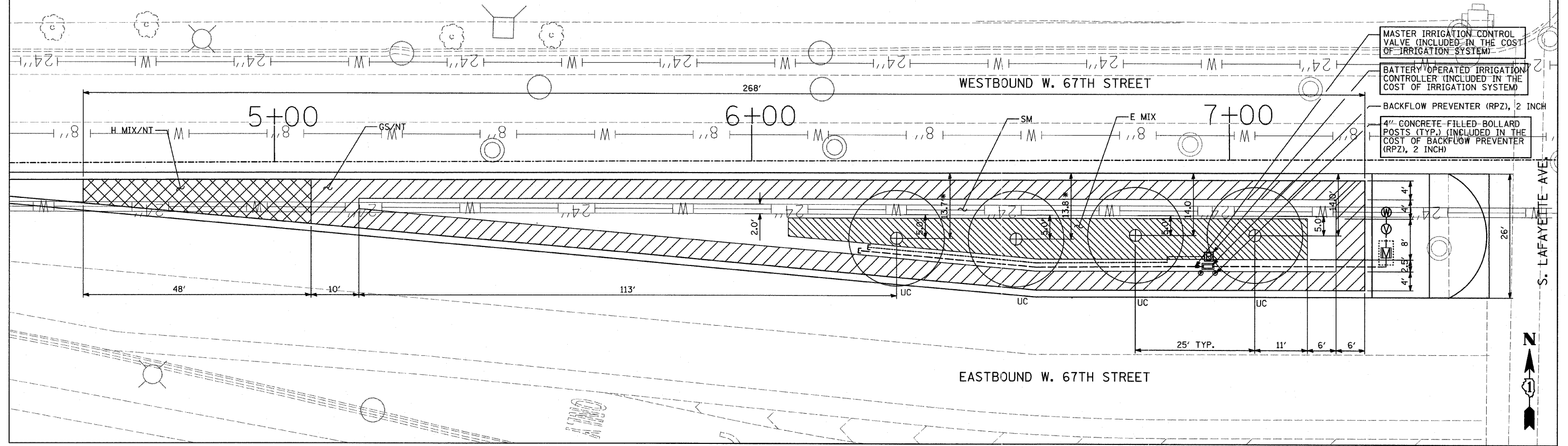
ILLINOIS DEPARTMENT OF TRANSPORTATION  
F.A.I. 94 (DAN RYAN EXPRESSWAY)  
67TH STREET (W. MARQUETTE RD.)  
MEDIAN PLANTING BED  
WATER SERVICE PLAN & MEDIAN SECTION

SCALE: AS NOTED  
DATE: JANUARY 30, 2008

DRAWN BY: JDF  
CHECKED BY: JPM

F.A.I. RTE.	SECTION	COUNTY	TOTAL SHEETS	SHEET NO.
94		COOK	22	6
STA.		TO STA.		
FED. ROAD DIST. NO.		ILLINOIS	FED. AID PROJECT	
(1516.1, 1717 & 1818) 1-5		62934		

\*NOTE: TREE PLACEMENT HAS BEEN SHIFTED IN ORDER TO AVOID ANY POTENTIAL CONFLICT WITH THE 24" WATERMAIN THAT RUNS UNDER THE MEDIAN PLANTER (5' MINIMUM DISTANCE TO THE SIDE OF THE PIPE).



**MEDIAN PLANTER ALONG WEST 67TH ST. AT LAFAYETTE AVE.**  
**SCALE: 1" = 10'**

**SCHEDULE OF LANDSCAPE ITEMS**

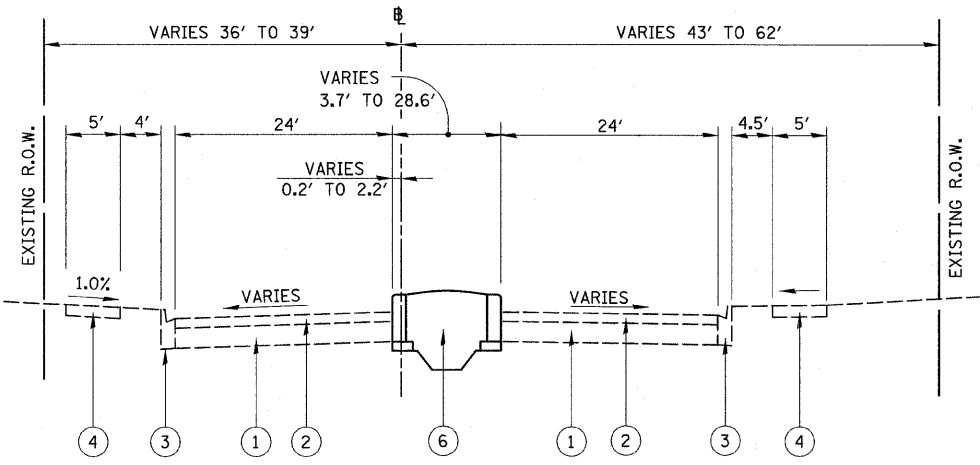
KEY	TYPE & PAY ITEM NUMBER	ITEM DESCRIPTION	COMMON NAME	NO. OF PLANTS	SPACING	SIZE	UNIT	TOTAL
		<b>TREES</b>						
UC	--	Ulmus Carpinifolia 'New Horizon'	New Horizon Smoothleaf Elm	4	25' O.C.	3" Caliper	EACH	4.00
		<b>SHRUBS</b>						
SM	C20099G5	Spiraea x Bumalda 'Magic Carpet'	Magic Carpet Spiraea	340	24" O.C. Staggered	5 -Gallon	EACH	340.00
		<b>PERENNIAL PLANTS, NARCISSUS</b>						
NT	XX001363	Narcissus 'Tete -a- Tete'	Tete - a - Tete Daffodil	19899	SEE DETAIL	TOPSIZE	UNIT	198.99
		<b>PERENNIAL PLANTS, DAYLILIES</b>						
H	K0030400	Hemerocallis 'Happy Returns'	Happy Returns Daylily	68	12" O.C. Staggered	1 -Gallon	UNIT	0.68
H	K0030400	Hemerocallis 'Jovial'	Jovial Daylily	68	12" O.C. Staggered	1 -Gallon	UNIT	0.68
H	K0030400	Hemerocallis 'Little Grapette'	Little Grapette Daylily	68	12" O.C. Staggered	1 -Gallon	UNIT	0.68
H	K0030400	Hemerocallis 'Ruby Stella'	Ruby Stella Daylily	68	12" O.C. Staggered	1 -Gallon	UNIT	0.68
H	K0030400	Hemerocallis 'Siloam Couble Classic'	Siloam Couble Classic Daylily	68	12" O.C. Staggered	1 -Gallon	UNIT	0.68
		<b>PERENNIAL PLANTS, GALLON POT</b>						
E	X0301407	Echinacea x 'Art's Pride'	Orange Meadowbrite Hybrid Coneflower	87	18" O.C. Staggered	1 -Gallon	UNIT	0.87
E	X0301407	Echinacea x 'Twilight'	Twilight Hybrid Coneflower	87	18" O.C. Staggered	1 -Gallon	UNIT	0.87
E	X0301407	Echinacea x 'Vintage Wine'	Vintage Wine Hybrid Coneflower	87	18" O.C. Staggered	1 -Gallon	UNIT	0.87
E	X0301407	Echinacea purpurea 'Magnus'	Magnus Purple Coneflower	87	18" O.C. Staggered	1 -Gallon	UNIT	0.87
GS	X0301407	Geranium Sanguineum 'Max Frel'	Max Frel Bloody Cranesbill	833	18" O.C. Staggered	1 -Gallon	UNIT	8.33

**TYLIN INTERNATIONAL**

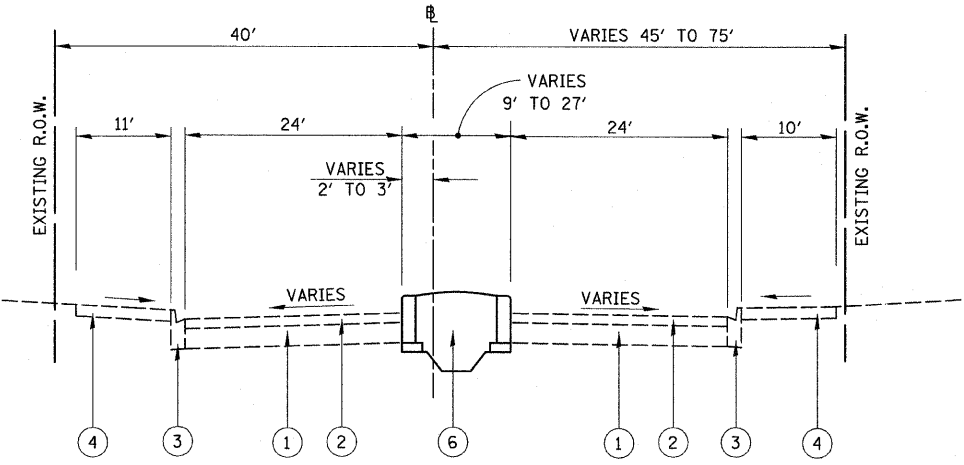
REVISIONS	
NAME	DATE

ILLINOIS DEPARTMENT OF TRANSPORTATION  
**F.A.I. 94 (DAN RYAN EXPRESSWAY)**  
**67TH STREET (W. MARQUETTE RD.)**  
**LANDSCAPING PLAN AND**  
**SCHEDULE OF LANDSCAPE ITEMS**  
 SCALE: AS NOTED      DRAWN BY: JPM  
 DATE: JANUARY 30, 2008      CHECKED BY: DAK

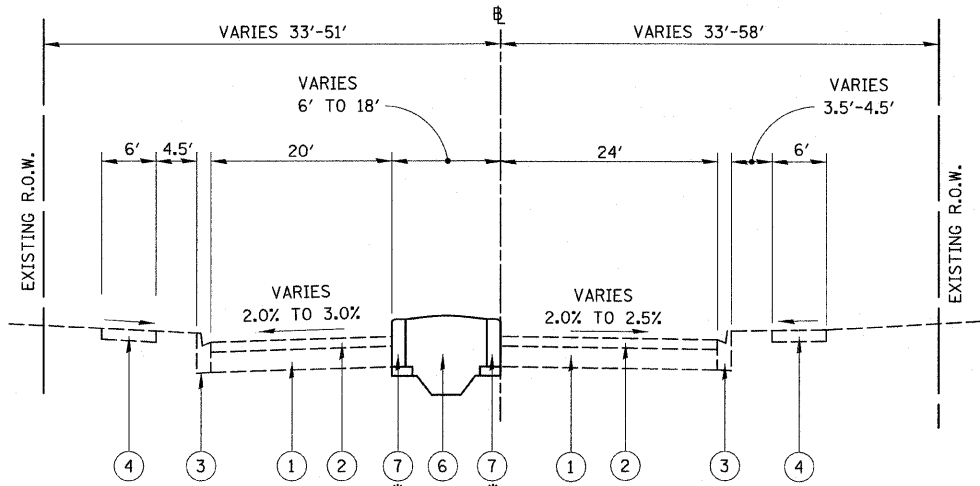
P:\0237\Road\CT\g\01\967\970\3\04.dwg 1/29/2008 11:42:37 AM



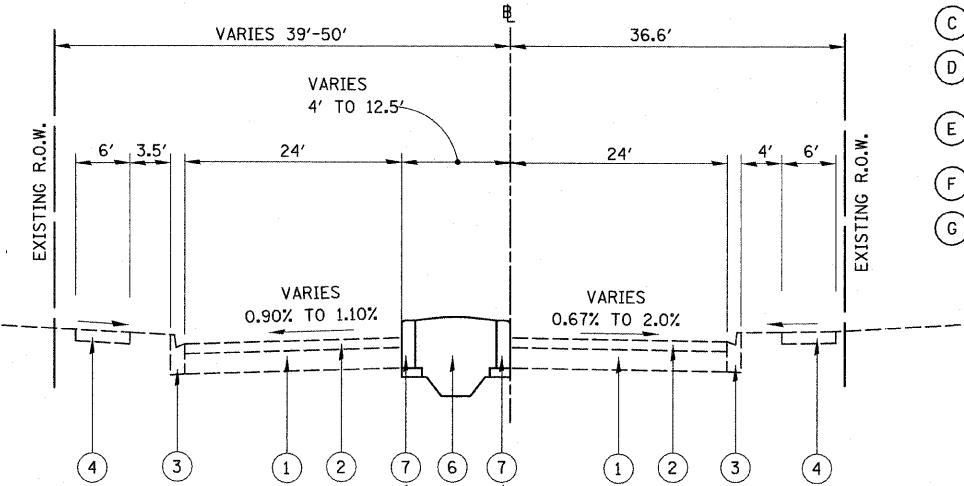
**TYPICAL CROSS SECTION-75TH STREET**  
WEST OF LAFAYETTE AVENUE



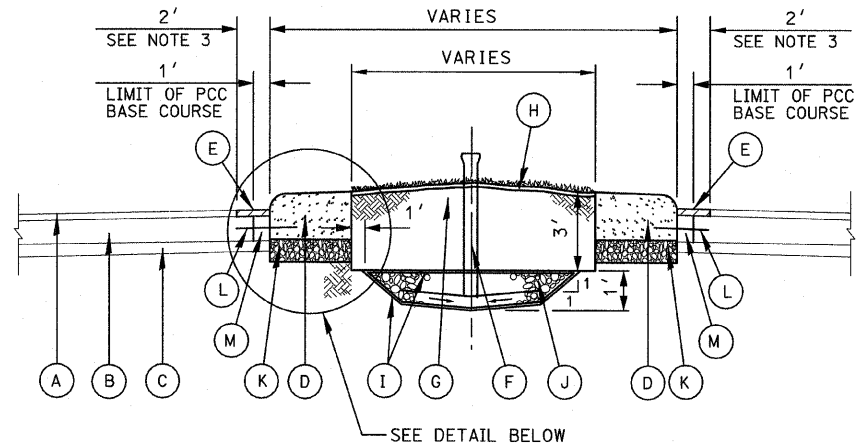
**TYPICAL CROSS SECTION-75TH STREET**  
EAST OF STATE STREET



**TYPICAL CROSS SECTION-76TH STREET**  
WEST OF LAFAYETTE AVENUE  
\*SEE NOTE 1



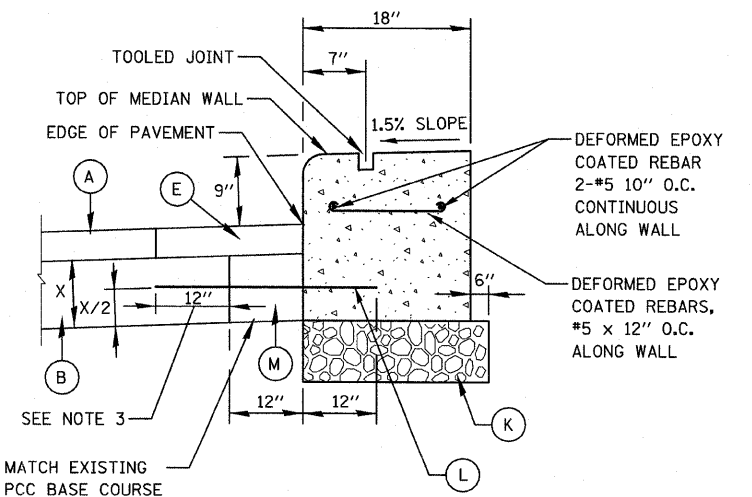
**TYPICAL CROSS SECTION-76TH STREET**  
EAST OF LAFAYETTE AVENUE  
\*SEE NOTE 1



**PROPOSED LANDSCAPED MEDIAN DETAIL**

**LEGEND**

- (A) EXISTING HOT-MIX ASPHALT SURFACE COURSE, 3"±
- (B) EXISTING PCC BASE COURSE 10"±
- (C) EXISTING SUB-BASE GRANULAR MATERIAL
- (D) CONCRETE MEDIAN WALL - 18" WIDE (SEE NOTE 1)
- (E) HOT-MIX ASPHALT SURFACE COURSE, MIX "D", N70, IL-4.75, 2" (SEE NOTE 2)
- (F) INSPECTION PIPE 4" (SEE NOTE 2)
- (G) PLANTING MIX FURNISH AND PLACE 36"
- (H) MULCH
- (I) GEOTECHNICAL FABRIC
- (J) POROUS GRANULAR MATERIAL
- (K) SUB-BASE GRANULAR MATERIAL, TYPE B 6" (SEE NOTE 1)
- (L) DEFORMED EPOXY COATED TIE BAR, #5 X 36" @ 30" O.C., DRILL AND GROUT INTO EXISTING PAVEMENT (INCLUDED IN COST OF CONCRETE MEDIAN WALL - 18" WIDE) (SEE NOTE 1)
- (M) PCC BASE COURSE 10 1/2"± (SEE NOTE 1)



**CONCRETE MEDIAN WALL - 18" WIDE**

**NOTES:**

1. CONCRETE MEDIAN WALL, HOT-MIX ASPHALT SURFACE COURSE, SUB-BASE, TIE BARS AND PCC BASE HAVE BEEN CONSTRUCTED BY CONTRACT NO. 62695 (17B) FOR THE 76TH STREET MEDIANS.
2. FOR INSPECTION PIPE DETAIL, SEE CONSTRUCTION DETAILS.
3. THE ADDITIONAL ONE FOOT (1') OF TWO INCH (2") HMA SURFACE REMOVAL AROUND THE 75TH STREET MEDIAN PLANTERS SHALL BE INCLUDED IN THE COST OF MEDIAN AND PAVEMENT REMOVAL (SPECIAL).

**LEGEND**

- (1) EXISTING PCC BASE COURSE 10"±
- (2) EXISTING HOT-MIX ASPHALT SURFACE COURSE, 3"±
- (3) EXISTING CCC&G, TYPE B-V.12
- (4) EXISTING PCC SIDEWALK
- (5) EXISTING GRASS PARKWAY
- (6) PROPOSED LANDSCAPED MEDIAN (SEE PROPOSED LANDSCAPED MEDIAN DETAIL)
- (7) EXISTING CONCRETE MEDIAN WALL - 18" WIDE

REVISIONS	
NAME	DATE

ILLINOIS DEPARTMENT OF TRANSPORTATION  
F.A.I. 94 (DAN RYAN EXPRESSWAY)  
**75TH AND 76TH STREET**  
TYPICAL SECTIONS  
SCALE: AS NOTED  
DATE: JANUARY 30, 2008  
DRAWN BY: REW/RTA  
CHECKED BY: JCM

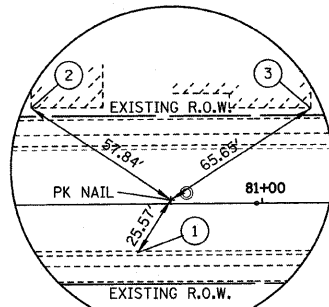
**HOT-MIX ASPHALT MIXTURE REQUIREMENT**

ITEM	AC TYPE	VOIDS	RAP %
HOT-MIX ASPHALT SURFACE COURSE, MIX "D", N70, IL-4.75	PG 64-22	4% @ 70 Gyr	10

THE UNIT WEIGHT USED TO CALCULATE ALL HOT-MIX ASPHALT MIXTURES IS 112 LBS/SQ YD/IN.

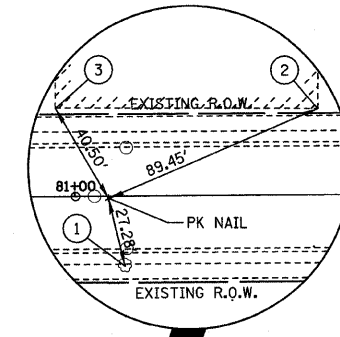
**75TH STREET COORDINATE DATA**

100	N 1,855,256.511 E 1,176,567.363
101	N 1,855,266.361 E 1,177,027.998
102	N 1,855,267.509 E 1,177,135.637
103	N 1,855,289.015 E 1,177,856.662
104	N 1,855,298.735 E 1,177,961.485
105	N 1,855,305.511 E 1,178,108.344



PK NAIL SET IN PAVEMENT  
STA. 65+60.40, 1.46' LEFT  
N 1,854,592.112  
E 1,176,581.811

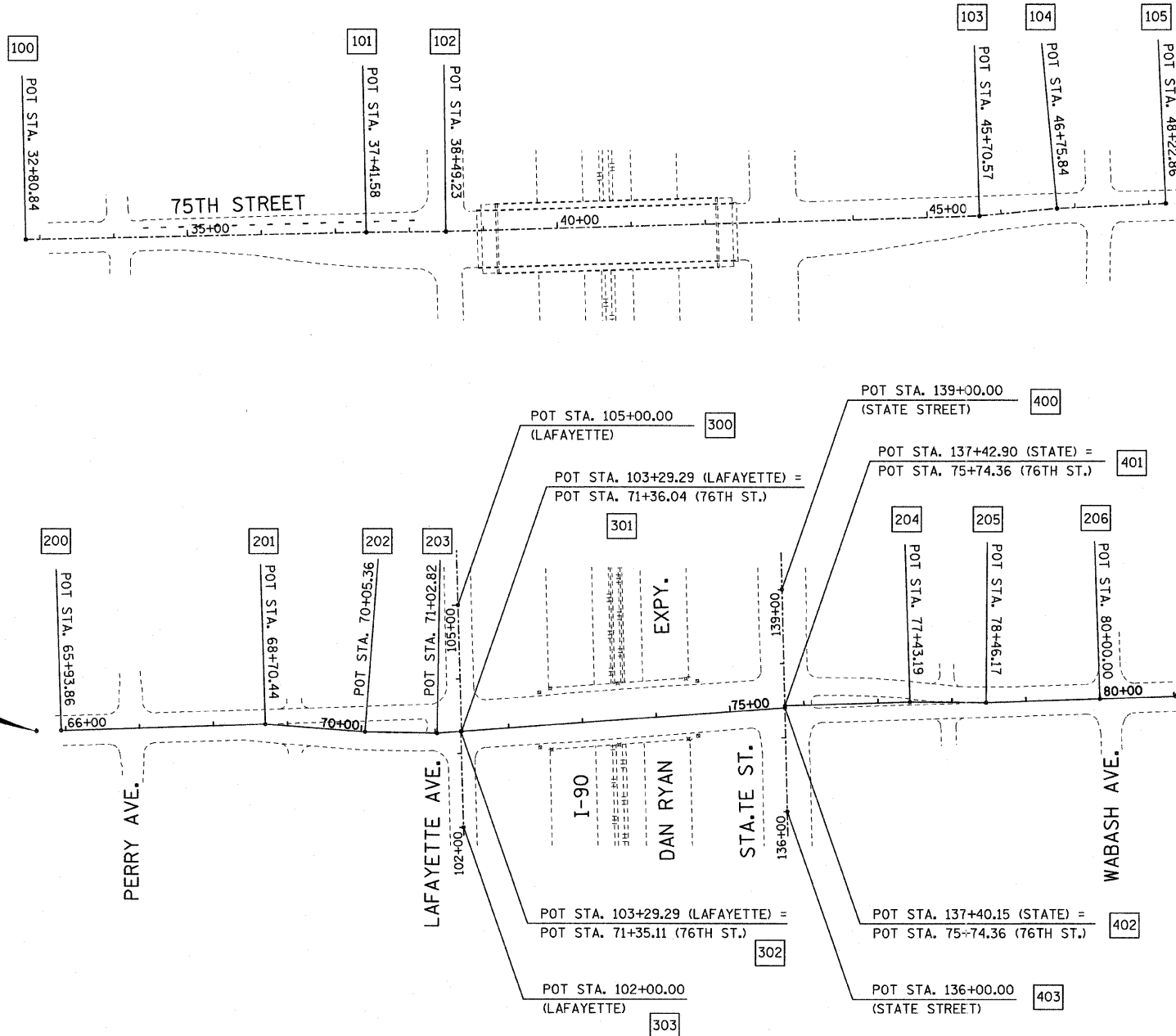
- ① "X" ON TOP OF CURB
- ② "X" NORTHWEST CORNER OF BLDG.
- ③ "X" NORTHEAST CORNER OF BLDG.



PK NAIL SET IN PAVEMENT  
STA. 81+02.70, 0.69' RIGHT  
N 1,854,640.139  
E 1,178,121.966

- ① PK NAIL ON 16 INCH TREE
- ② "X" NORTHEAST CORNER OF BLDG.
- ③ "X" NORTHWEST CORNER OF BLDG.

76TH STREET



**SURVEY BENCHMARKS**

76TH STREET		
BM-97	"X" on South bolt of fire hydrant at Northwest corner of West 76th Street and South Perry Avenue	Elev. = 8.79
BM-104	CCHD brass disk in IDOT parkway at Southwest corner of East 76th Street and South Wabash Avenue. In front of house number 7600.	Elev. = 9.23

**76TH STREET COORDINATE DATA**

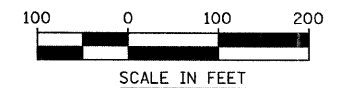
200	N 1,854,593.018 E 1,176,615.262	204	N 1,854,632.506 E 1,177,762.602
201	N 1,854,601.494 E 1,176,891.709	205	N 1,854,631.789 E 1,177,865.575
202	N 1,854,591.223 E 1,177,026.243	206	N 1,854,636.843 E 1,178,019.322
203	N 1,854,589.503 E 1,177,123.685		

**LAFAYETTE COORDINATE DATA**

300	N 1,854,762.615 E 1,177,151.979
301	N 1,854,591.974 E 1,177,156.827
302	N 1,854,591.904 E 1,177,155.894
303	N 1,854,462.665 E 1,177,159.506

**STATE ST. COORDINATE DATA**

400	N 1,854,784.355 E 1,177,589.882
401	N 1,854,627.305 E 1,177,593.848
402	N 1,854,624.555 E 1,177,593.917
403	N 1,854,484.444 E 1,177,597.175



REVISIONS	
NAME	DATE

ILLINOIS DEPARTMENT OF TRANSPORTATION  
F.A.I. 94 (DAN RYAN EXPRESSWAY)  
**75TH AND 76TH STREET  
ALIGNMENT AND TIES**

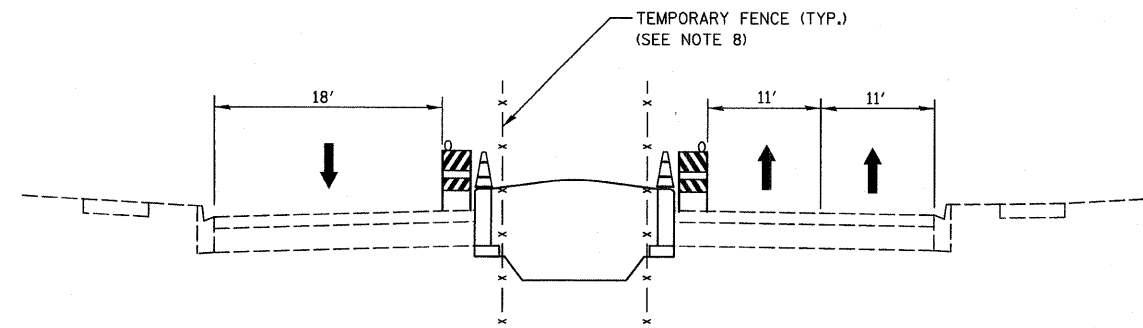
SCALE: AS NOTED      DRAWN BY: REW/RTA  
DATE: JANUARY 30, 2008      CHECKED BY: JCM

**KNIGHT**

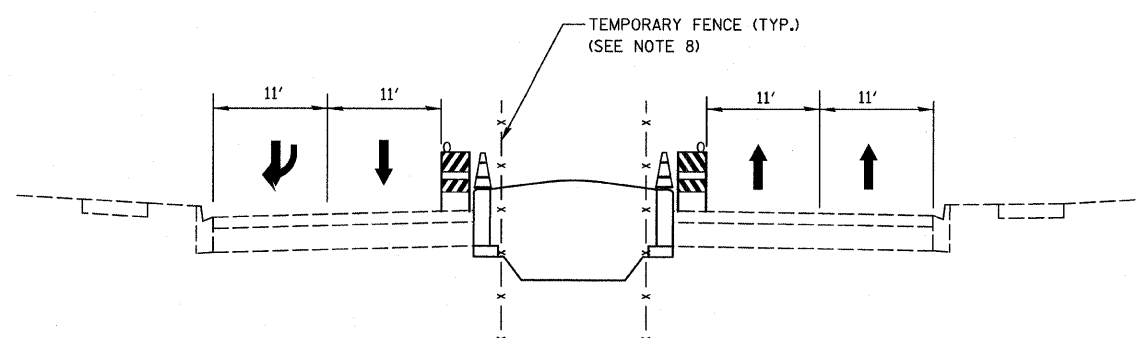
Engineers & Architects



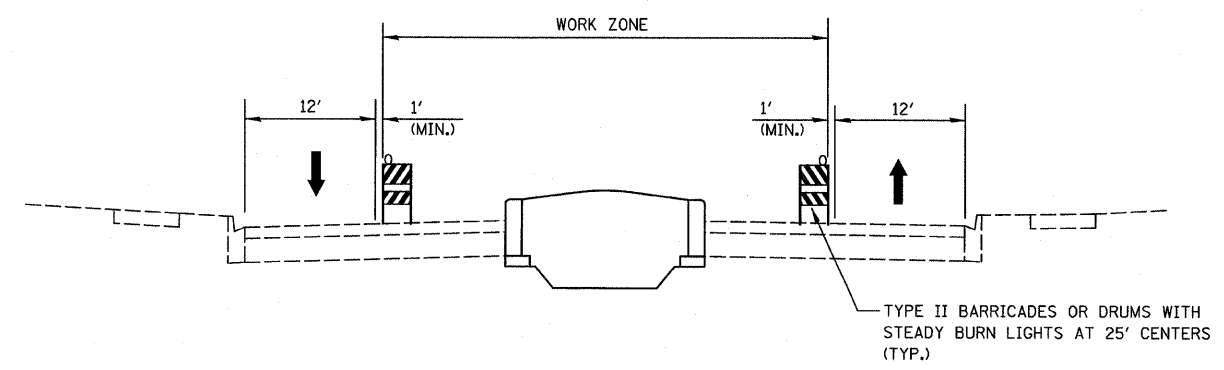
F.A.I. RTE.	SECTION	COUNTY	TOTAL SHEETS	SHEET NO.
94	*	COOK	22	9
STA.		TO STA.		
FED. ROAD DIST. NO.	ILLINOIS	FED. AID PROJECT		
*(1516.1, 1717 & 1818) I-5				62934



**TYPICAL CROSS SECTION-76TH STREET**  
DURING NON-WORKING HOURS  
WEST OF LAFAYETTE AVENUE



**TYPICAL CROSS SECTION-76TH STREET**  
DURING NON-WORKING HOURS  
EAST OF STATE STREET



**TYPICAL CROSS SECTION-76TH STREET**  
DURING WORKING HOURS

**GENERAL NOTES**

1. THE CONTRACTOR SHALL PROVIDE AND MAINTAIN ACCESS TO ALL PUBLIC AND PRIVATE ENTRANCES.
2. THE CONTRACTOR SHALL COORDINATE THE WORK WITH THE CONTRACTORS ON THE ADJACENT CONTRACTS.
3. THE CONTRACTOR SHALL COORDINATE ALL TRAFFIC CLOSURES WITH THE LOCAL AGENCY, ADJACENT PROJECTS AND IDOT BUREAU OF TRAFFIC
4. THE CONTRACTOR SHALL USE PAVEMENT MARKING TAPE, TYPE III, ON ALL EXISTING SURFACES TO REMAIN AND ALL PERMANENT SURFACES.
5. ALL BARRICADES OR DRUMS SHALL BE EQUIPPED WITH MONO-DIRECTIONAL STEADY BURNING LIGHTS. A MINIMUM OF TWO SAND BAGS SHALL BE PROVIDE FOR EACH BARRICADE OR DRUM.
6. EXISTING TRAFFIC SIGNS IN CONFLICT WITH STAGING SHALL BE COVERED AS DIRECTED BY THE ENGINEER. THIS WORK SHALL BE CONSIDERED INCLUDED IN THE CONTRACT UNIT PRICE FOR "TRAFFIC CONTROL AND PROTECTION (SPECIAL)".
7. THE CONTRACTOR SHALL OBTAIN ALL REQUIRED PERMITS FROM CDOT AND COORDINATE WITH THE CITY OF CHICAGO TO IMPLEMENT A NO PARKING RESTRICTION ALONG 75TH STREET TEMPORARY LANE CLOSURES ARE IN EFFECT. THE CONTRACTOR SHALL SCHEDULE THE WORK TO MINIMIZE THE LENGTH OF TIME PARKING IS RESTRICTED. THIS WORK SHALL BE CONSIDERED INCLUDED IN THE CONTRACT UNIT PRICE FOR "TRAFFIC CONTROL AND PROTECTION (SPECIAL)".
8. TEMPORARY FENCE SHALL BE REMOVED AND RE-ERECTED AND/OR RELOCATED AS REQUIRED TO COMPLETE THE PROPOSED CONSTRUCTION. PAYMENT FOR THIS WORK SHALL BE CONSIDERED INCLUDED IN THE CONTRACT UNIT PRICE FOR TEMPORARY FENCE.

**75TH STREET MAINTENANCE OF TRAFFIC NOTE**

1. MAINTENANCE OF TRAFFIC FOR THE CONSTRUCTION OF THE PROPOSED MEDIANS SHALL BE AS SHOWN ON THE 75TH STREET MAINTENANCE OF TRAFFIC PLAN.

**76TH STREET MAINTENANCE OF TRAFFIC NOTES**

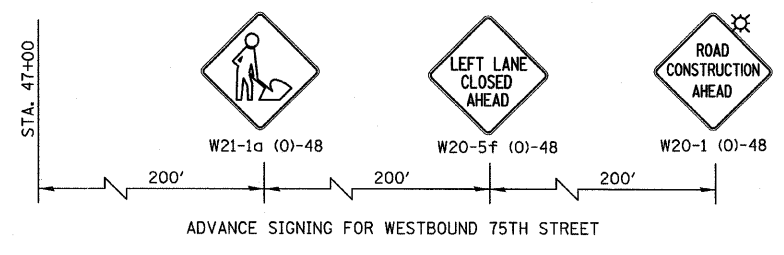
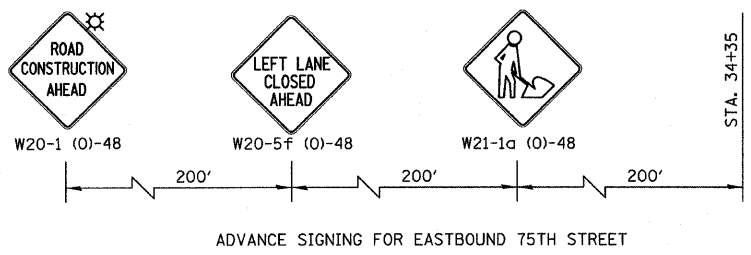
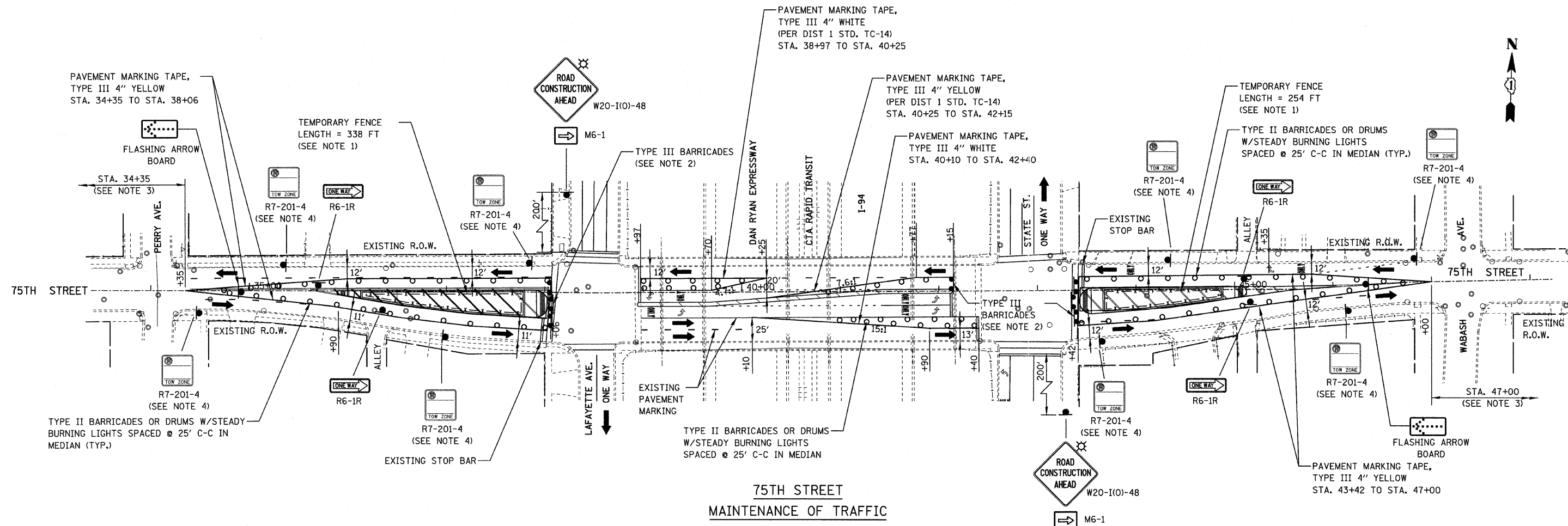
1. THE INSTALLATION OF THE POROUS GRANULAR MATERIAL, PLANTING MIX, IRRIGATION SYSTEM AND PLANT MATERIAL SHALL BE COMPLETED WITH DAYTIME LANE CLOSURE AS SHOWN ON THE TYPICAL SECTIONS. ADVANCE SIGNING AND TAPERS FOR DAYTIME LANE CLOSURES SHALL BE IN ACCORDANCE WITH IDOT STANDARD 701601.
2. DURING NON-WORKING HOURS, THE PROPOSED MEDIANS SHALL BE DELINEATED WITH TYPE II BARRICADES OR DRUMS WITH STEADY BURNING LIGHTS AND/OR CONSTRUCTION FENCE AS SHOWN ON THE TYPICAL SECTIONS AND IDOT STANDARD 701701 OR AS DIRECTED BY THE ENGINEER.

REVISIONS	
NAME	DATE

ILLINOIS DEPARTMENT OF TRANSPORTATION  
F.A.I. 94 (DAN RYAN EXPRESSWAY)  
75TH AND 76TH STREET  
MAINTENANCE OF TRAFFIC  
NOTES AND TYPICAL SECTIONS  
SCALE: AS NOTED      DRAWN BY: REW  
DATE: JANUARY 30, 2008      CHECKED BY: JCM

FILE: L:\16895\02\_Civil\Drawings\Contract\_170\689502\_MOT\_NOTES\_170.dgn



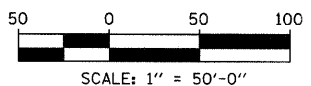


**LEGEND**

- CONSTRUCTION WORK ZONE
- DIRECTION OF TRAFFIC
- TYPE II BARRICADES OR DRUMS WITH STEADY BURNING LIGHTS
- SIGN LOCATION (PLACED THIS STAGE)
- TYPE III BARRICADE LOCATION (PLACED IN THIS STAGE)
- TEMPORARY FENCE

**NOTES**

1. TEMPORARY FENCE SHALL BE INSTALLED ALONG THE OPEN EXCAVATION IMMEDIATELY AFTER THE EXISTING PAVEMENT AND/OR BARRIER MEDIANS ARE REMOVED.
2. THE NUMBER OF TYPE III BARRICADES AS REQUIRED TO PROVIDE PROPER CLOSURE AS DIRECTED BY THE ENGINEER.
3. ADVANCE SIGNING, BARRICADES AND CLOSURE SHALL BE IN ACCORDANCE WITH IDOT STANDARD 701606.
4. THE ADDITIONAL TEMPORARY SIGNING REQUIRED SHALL NOT BE PAID FOR SEPARATELY, BUT SHALL BE INCLUDED IN THE COST OF "TRAFFIC CONTROL AND PROTECTION (SPECIAL)".



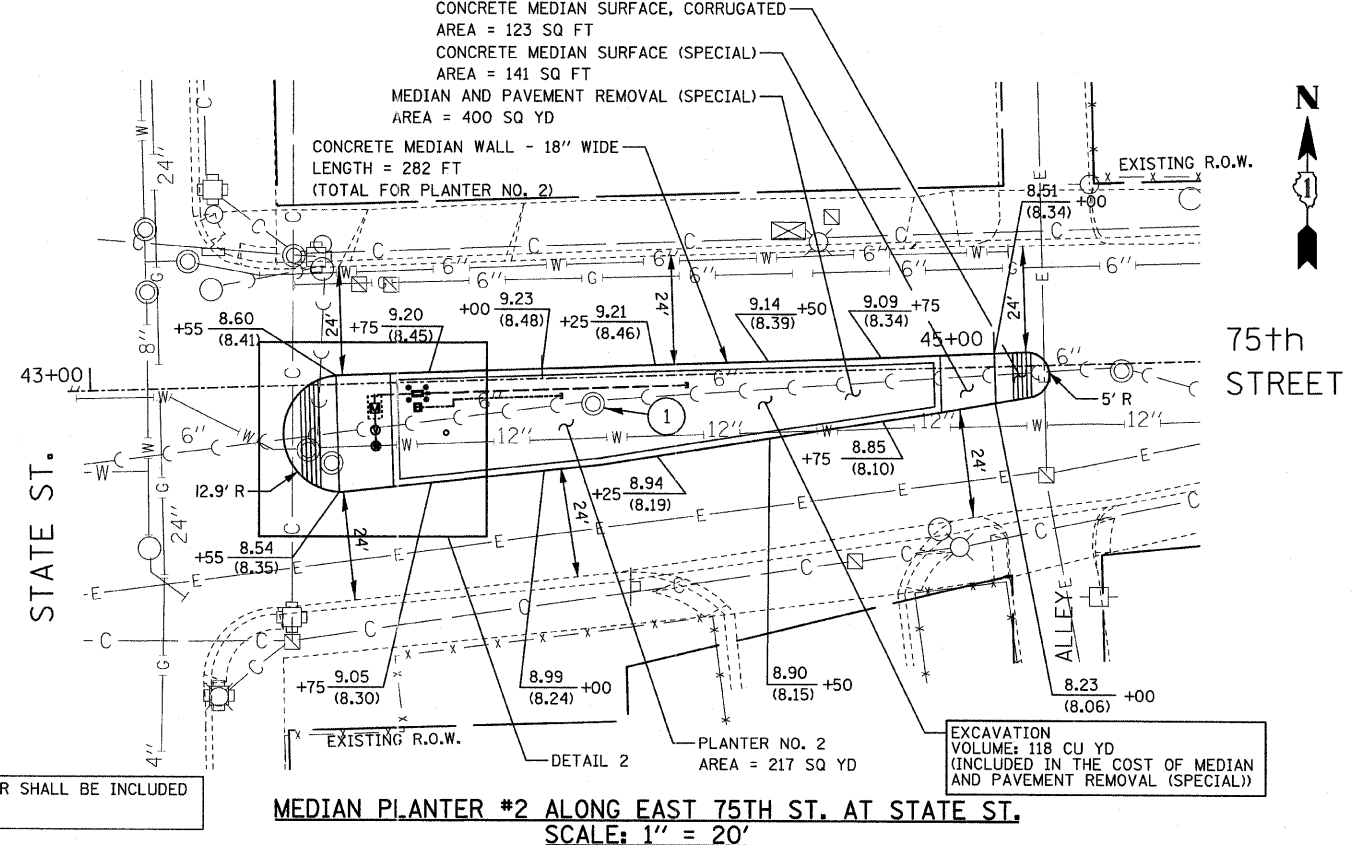
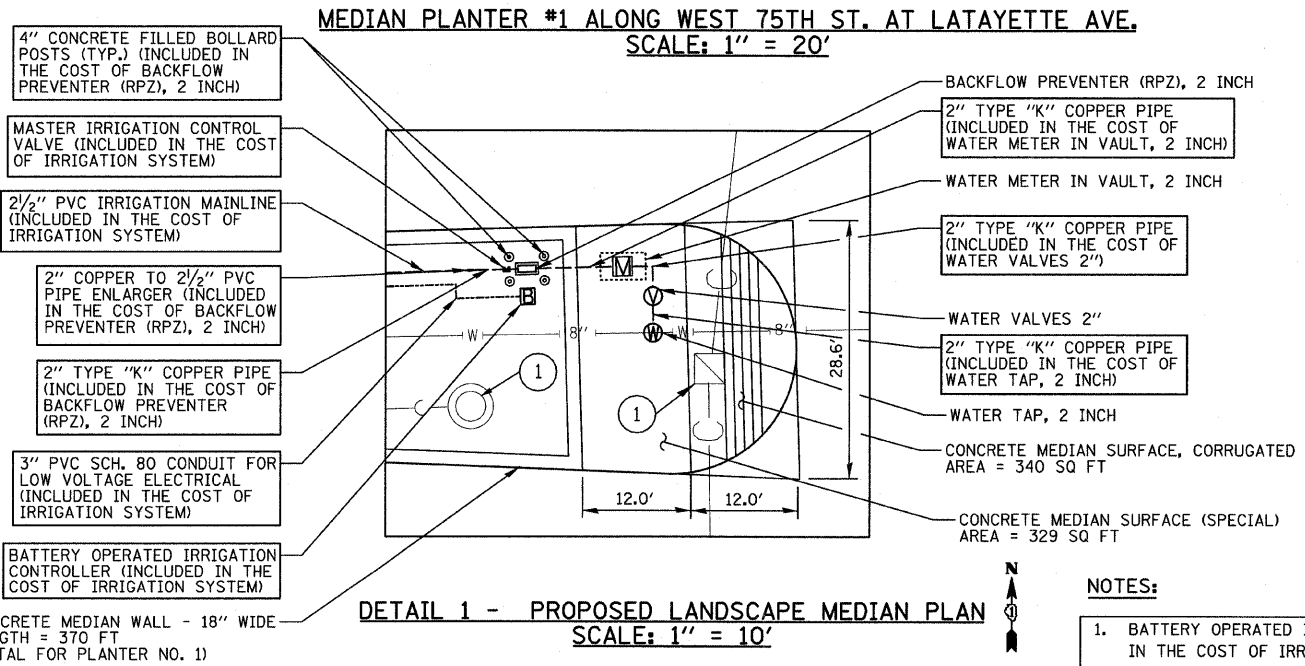
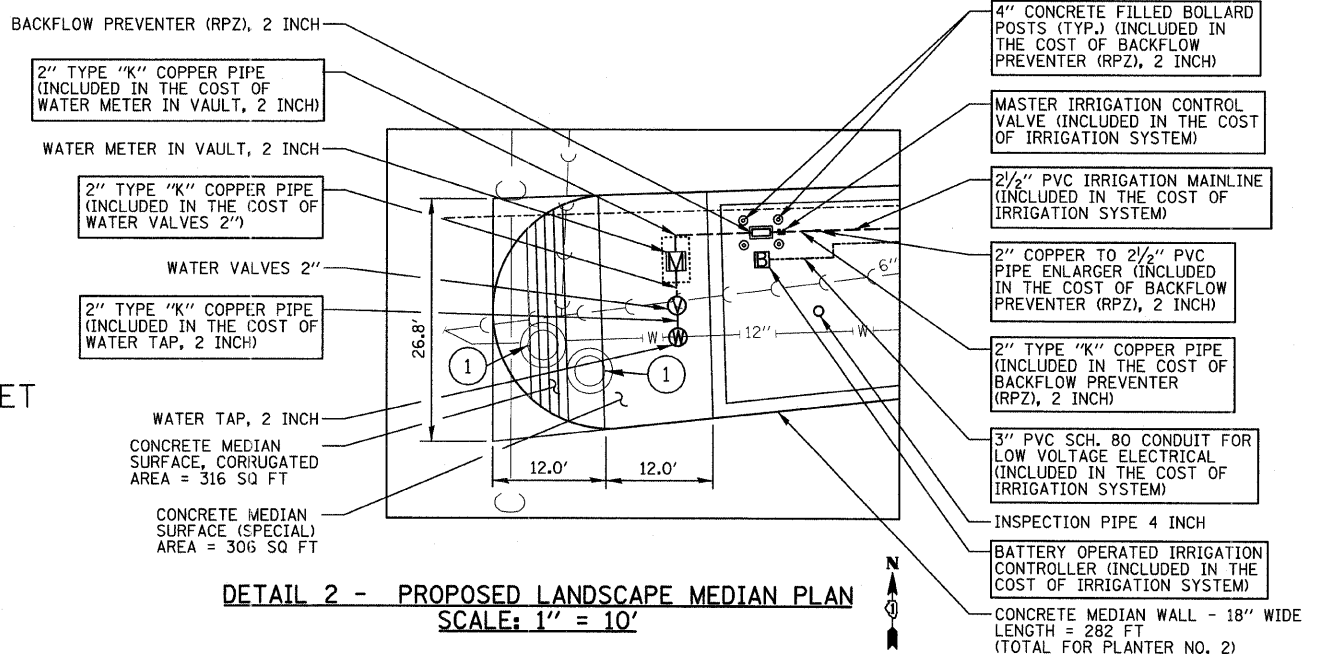
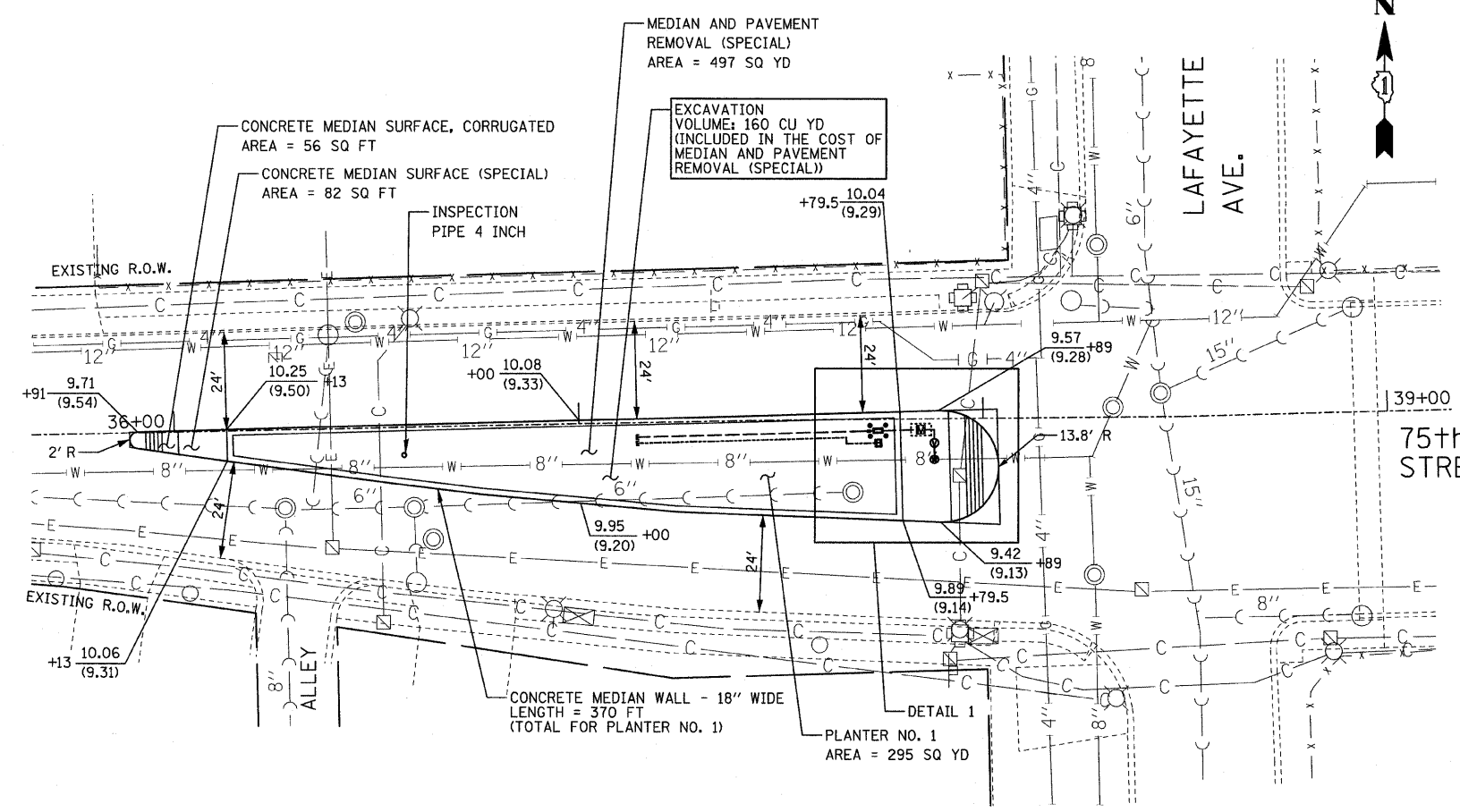
REVISIONS	
NAME	DATE

ILLINOIS DEPARTMENT OF TRANSPORTATION  
**F.A.I. 94 (DAN RYAN EXPRESSWAY)**  
**75TH STREET**  
**MAINTENANCE OF TRAFFIC**  
 SCALE: AS NOTED      DRAWN BY: REW/RTA  
 DATE: JANUARY 30, 2008      CHECKED BY: JCM



FILE: I:\16592\01\Con\USNews\Contract\1701659202\_MOT\_17c.dgn

F.A.I. RTE.	SECTION	COUNTY	TOTAL SHEETS	SHEET NO.
94	*	COOK	22	11
STA.		TO STA.		
FED. ROAD DIST. NO.		ILLINOIS	FED. AID PROJECT	
* (1516.1, 1717 & 1818) I-5		62934		

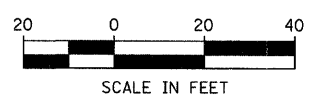


- NOTES:**
- BATTERY OPERATED IRRIGATION CONTROLLER SHALL BE INCLUDED IN THE COST OF IRRIGATION SYSTEM.
  - PLACEMENT OF THE BATTERY OPERATED IRRIGATION CONTROLLER AND THE INSPECTION PIPE TO BE COORDINATED WITH TREE PLACEMENT.
  - QUANTITIES HAVE BEEN PROVIDED FOR PAVEMENT MARKING REMOVAL AND PAVEMENT MARKING REPLACEMENT. THE CONTRACTOR SHALL REMOVE AND REPLACE PAVEMENT MARKINGS AROUND THE 75TH STREET MEDIANS AND AS REQUIRED FOR MAINTENANCE OF TRAFFIC.
  - EXISTING PAVEMENT ELEVATIONS WERE BASED ON PREVIOUSLY PUBLISHED PLANS. THE CONTRACTOR SHALL FIELD VERIFY ALL EXISTING PAVEMENT ELEVATIONS PRIOR TO ANY CONSTRUCTION ACTIVITIES.

**LEGEND**

X.XX	TOP OF CURB ELEVATION
(X.XX)	EDGE OF PAVEMENT ELEVATION
①	STRUCTURES TO BE ADJUSTED

**KNIGHT**  
Engineers & Architects



REVISIONS	
NAME	DATE

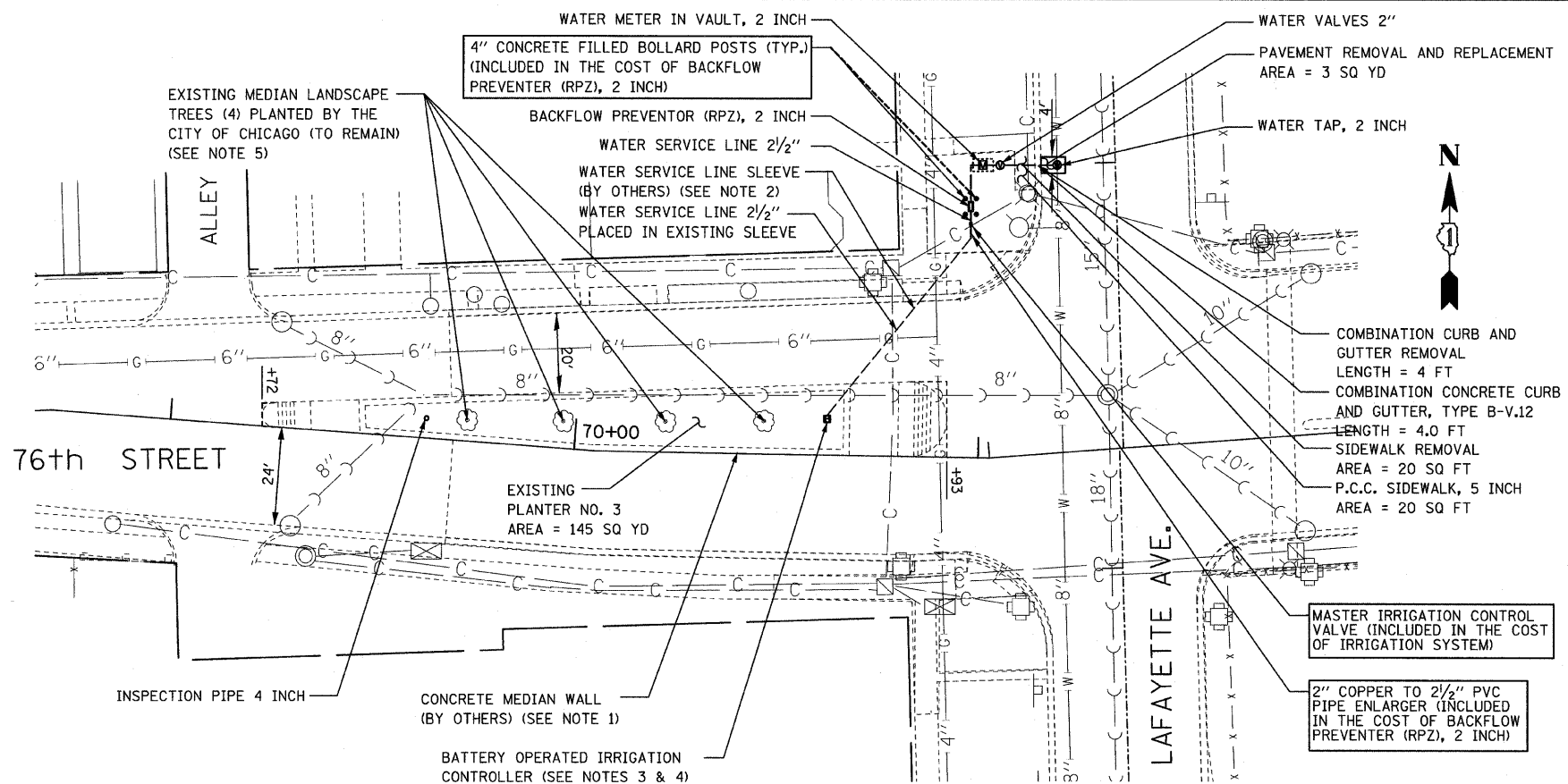
ILLINOIS DEPARTMENT OF TRANSPORTATION  
F.A.I. 94 (DAN RYAN EXPRESSWAY)

**75TH STREET  
MEDIAN PLAN**

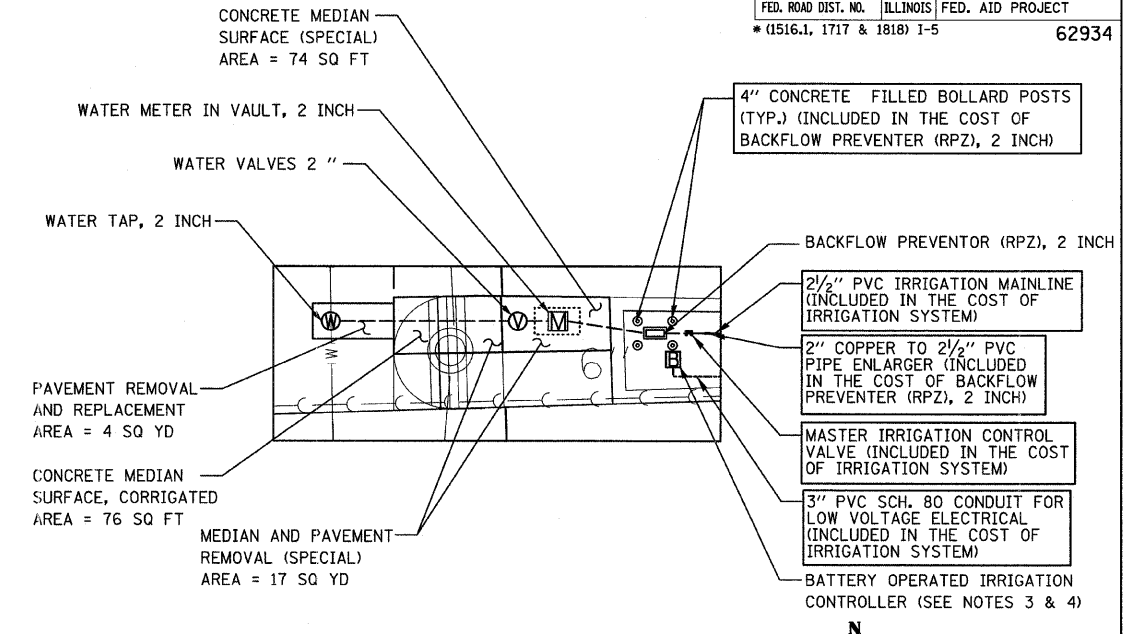
SCALE: AS NOTED  
DATE: JANUARY 30, 2008

DRAWN BY: REW/RTA  
CHECKED BY: JCM

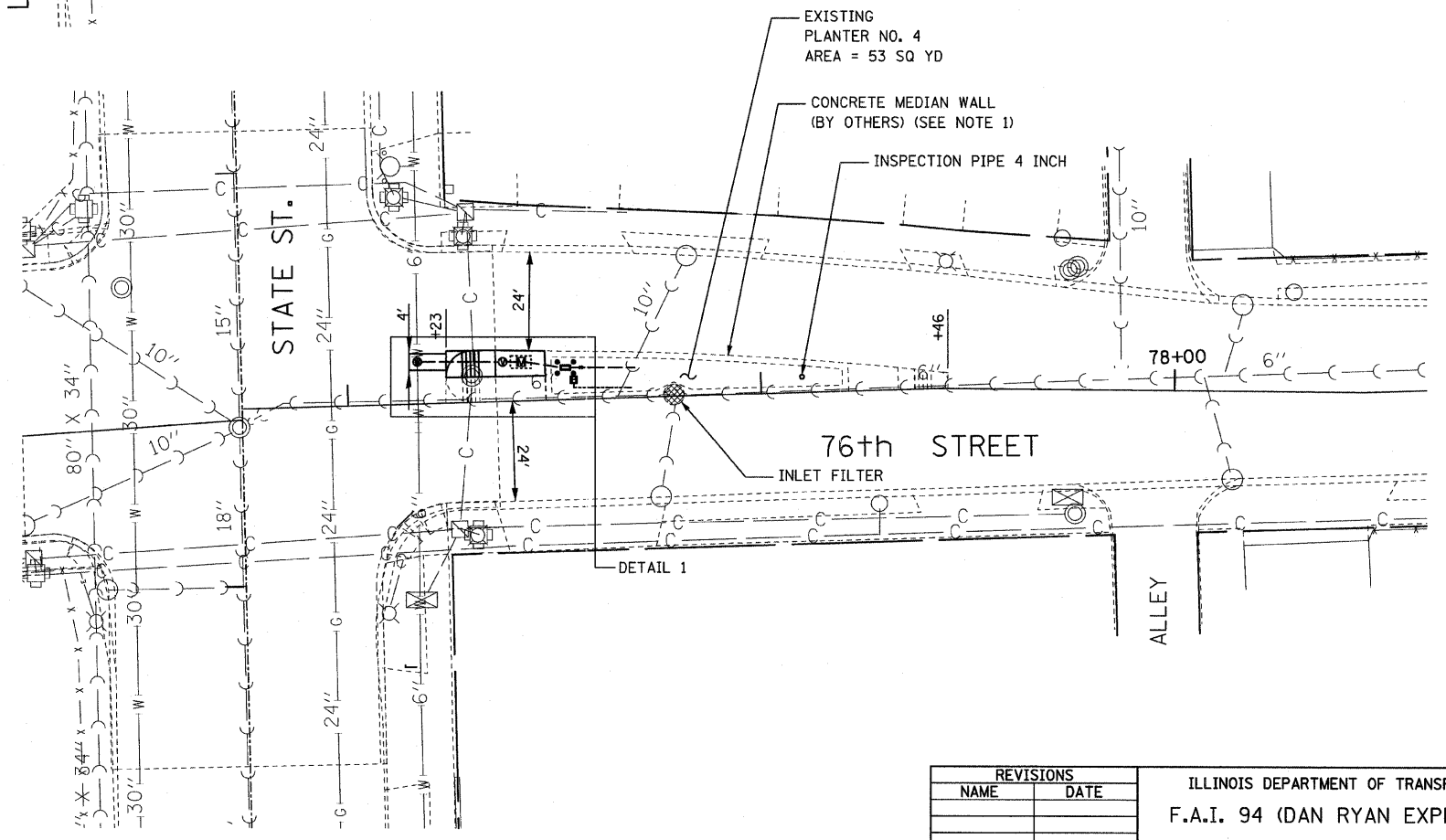
F.A.I. RTE.	SECTION	COUNTY	TOTAL SHEETS	SHEET NO.
94	*	COOK	22	12
STA.		TO STA.		
FED. ROAD DIST. NO.		ILLINOIS	FED. AID PROJECT	
* (4516.1, 1717 & 1818) 1-5		62934		



**MEDIAN PLANTER #3 ALONG WEST 76TH ST. AT LAFAYETTE AVE.**  
 SCALE: 1" = 20'



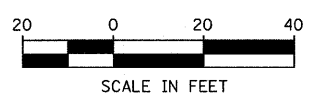
**DETAIL 2 - PROPOSED LANDSCAPE MEDIAN PLAN**  
 SCALE: 1" = 10'



**MEDIAN PLANTER #4 ALONG EAST 76TH ST. AT STATE ST.**  
 SCALE: 1" = 20'

**NOTES**

1. CONCRETE MEDIAN WALL AND CONCRETE MEDIANS WERE CONSTRUCTED BY CONTRACT NO. 62695 (17B).
2. WATER SERVICE LINE SLEEVE UNDER PAVEMENT AND/OR SIDEWALK WAS INSTALLED BY CONTRACT NO. 62695 (17B).
3. BATTERY OPERATED IRRIGATION CONTROLLER SHALL BE INCLUDED IN THE COST OF IRRIGATION SYSTEM.
4. PLACEMENT OF BATTERY OPERATED IRRIGATION CONTROLLER AND THE INSPECTION PIPE TO BE COORDINATED WITH TREE PLACEMENT.
5. TREE LOCATION IN THE WEST 76TH STREET MEDIAN PLANTERS WERE PROVIDED BY THE CITY OF CHICAGO.



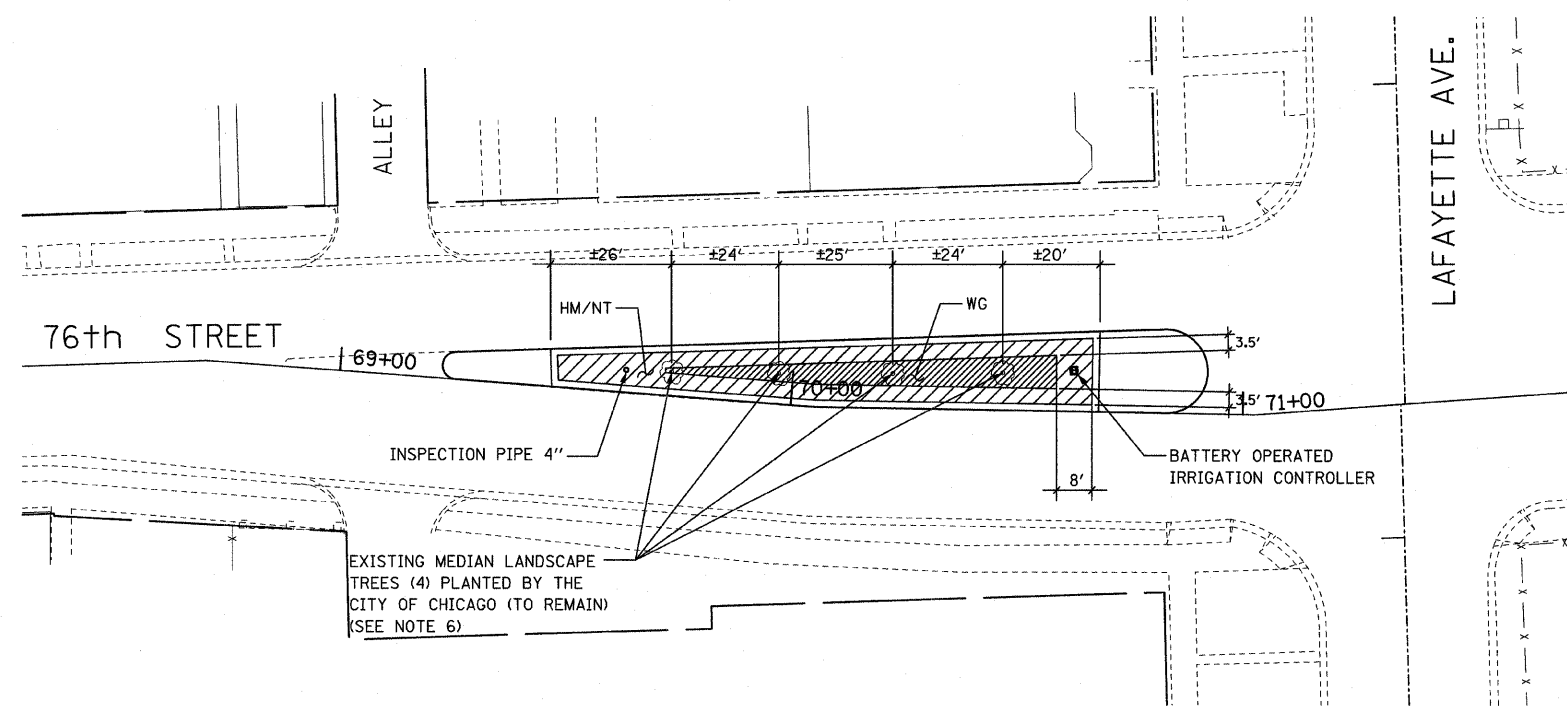
REVISIONS	
NAME	DATE

ILLINOIS DEPARTMENT OF TRANSPORTATION  
 F.A.I. 94 (DAN RYAN EXPRESSWAY)  
**76TH STREET  
 MEDIAN PLAN**  
 SCALE: AS NOTED  
 DATE: JANUARY 30, 2008  
 DRAWN BY: WHI  
 CHECKED BY: JCM

FILE: L:\6592.02\Cad\Sheets\Contract\76th\_Median\76p.dgn







**PLANTER NO. 3 - ALONG WEST 76TH ST. AT LAFAYETTE AVE.**  
SCALE: 1" = 20'

**PLANT LIST FOR PLANTER NO. 3**

KEY	Ulmus	ITEM	COMMON NAME	NO. OF PLANTS	SPACING	SIZE	UNIT	QTY
<b>TREES</b>								
CO		<i>Celtis occidentalis</i>	Common Hackberry	4	SEE NOTE 6	3 1/2" CALIPER	EACH	4
<b>SHRUBS</b>								
WG		<i>Weigela florida 'Midnight Wine'</i>	Midnight Wine Old Fashioned Weigela	164	18" o.c. staggered	5-GALLON	EACH	164
<b>PERENNIAL PLANTS, NARCISSUS</b>								
NT		<i>Narcissus 'Tete-a-Tete'</i>	Tete-a-Tete Daffodil	8014	SEE NOTE 4	TOPSIZE	UNIT	80.14
<b>PERENNIAL PLANTS, GALLON POTS</b>								
HM		<i>Hemerocallis 'Mini Stella'</i>	Mini Stella Daylily	882	12" o.c. staggered	1-GALLON	UNIT	8.82

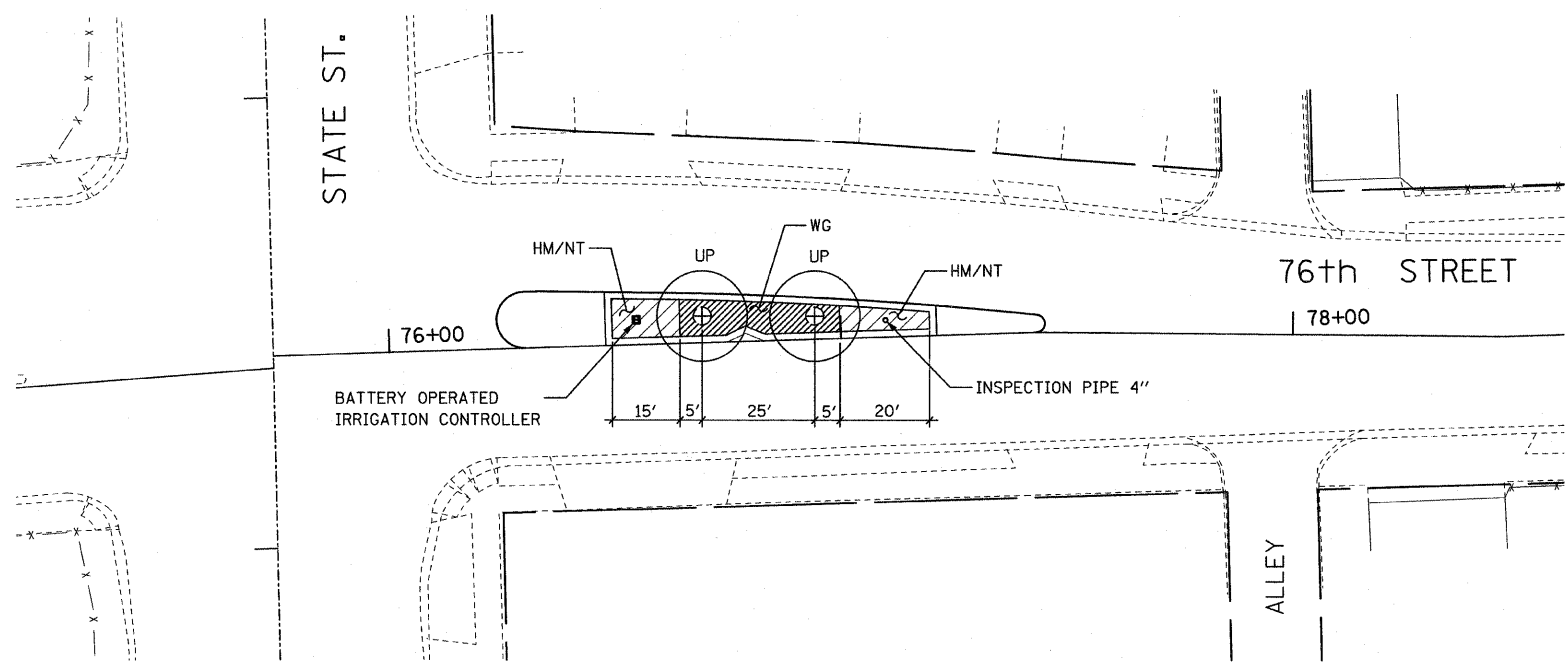
\* TREES ARE EXISTING AND NOT TO BE QUANTIFIED FOR PAYMENT

**LEGEND**

- UP - ULMUS X 'PATRIOT'
- WG - WEIGELA FLORIDA 'MIDNIGHT WINE'
- HM - HEMEROCALLIS 'MINI STELLA'
- NT - NARCISSUS 'TETE-A-TETE'

**NOTES**

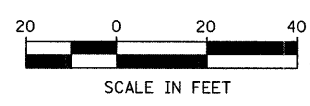
1. INSTALL TREES ON LINE THAT BISECTS PLANTER'S WIDTH.
2. INSTALL 4' DIAMETER MULCH RINGS AROUND TREES.
3. THE CONTRACTOR SHALL CONTACT IDOT ROADSIDE DEVELOPMENT UNIT AT (847) 705-4171 A MINIMUM OF 72 HOURS PRIOR TO PLANTING TO VERIFY PLANT LAYOUT.
4. SEE PLANTING BED LANDSCAPING PLAN DETAILS FOR BULB DETAIL.
5. SEE PLANTING BED LANDSCAPING PLAN DETAILS FOR PERENNIAL DETAIL.
6. THE LAYOUT OF THE EXISTING TREES IN THE W. 76TH STREET MEDIAN PLANTER WAS PROVIDED BY THE CITY OF CHICAGO. THE CONTRACTOR SHALL FIELD VERIFY THE EXISTING LAYOUT IN ORDER TO AVOID ANY CONFLICT WITH THE PROPOSED IRRIGATION SYSTEM.



**PLANTER NO. 4 - ALONG EAST 76TH ST. AT STATE ST.**  
SCALE: 1" = 20'

**PLANT LIST FOR PLANTER NO. 4**

KEY	ITEM	COMMON NAME	NO. OF PLANTS	SPACING	SIZE	UNIT	QTY	
<b>TREES</b>								
UP		<i>Ulmus x 'Patriot'</i>	Patriot Elm	2	25' o.c.	3" CALIPER	EACH	2
<b>SHRUBS</b>								
WG		<i>Weigela florida 'Midnight Wine'</i>	Midnight Wine Old Fashioned Weigela	98	18" o.c. staggered	5-GALLON	EACH	98
<b>PERENNIAL PLANTS, NARCISSUS</b>								
NT		<i>Narcissus 'Tete-a-Tete'</i>	Tete-a-Tete Daffodil	2020	SEE NOTE 4	TOPSIZE	UNIT	20.20
<b>PERENNIAL PLANTS, GALLON POTS</b>								
HM		<i>Hemerocallis 'Mini Stella'</i>	Mini Stella Daylily	225	12" o.c. staggered	1-GALLON	UNIT	2.25



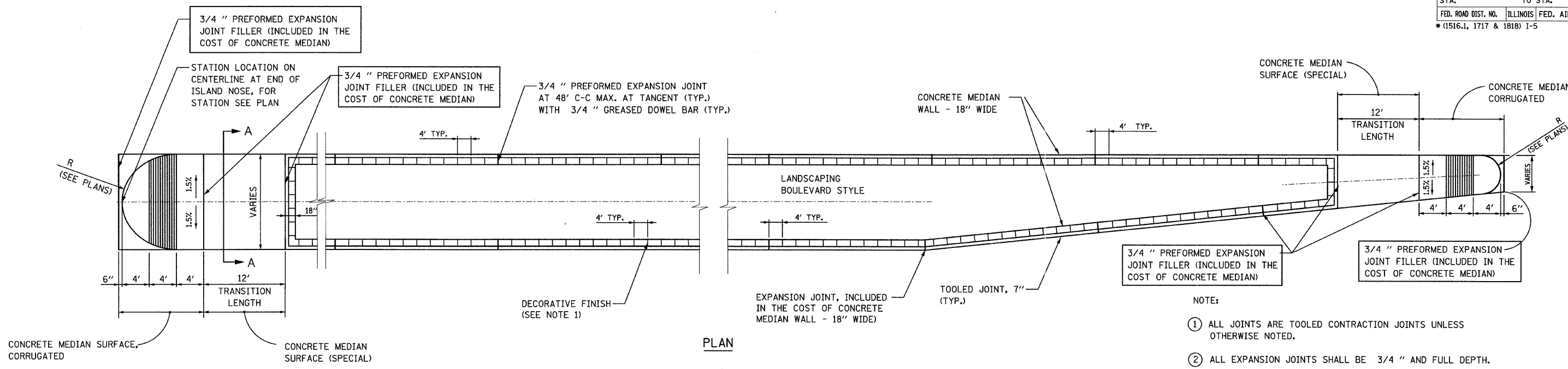
REVISIONS	
NAME	DATE

ILLINOIS DEPARTMENT OF TRANSPORTATION  
F.A.I. 94 (DAN RYAN EXPRESSWAY)  
**76TH STREET MEDIAN  
PLANTERS NO. 3 AND 4**  
SCALE: AS NOTED  
DATE: JANUARY 30, 2008  
DRAWN BY: REW/RTA  
CHECKED BY: JCM

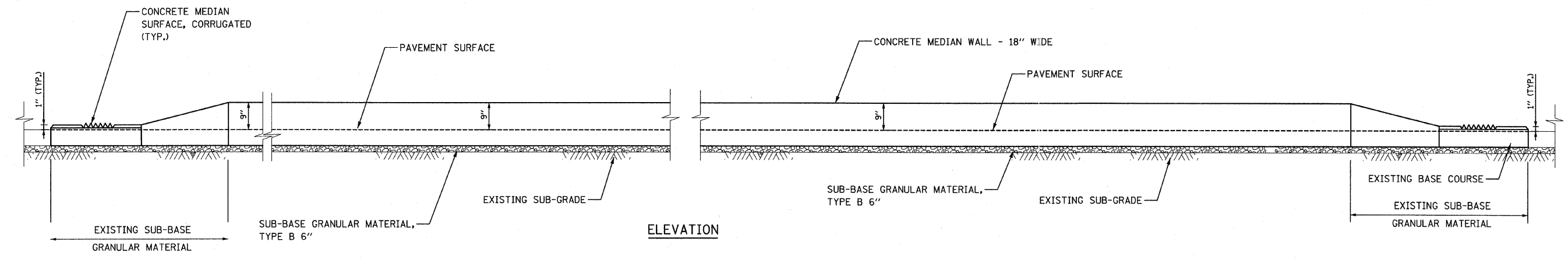
FILE: L:\6592\02\Cad\Sheets\Contract\17016592\76th\_Landscape\_170.dgn



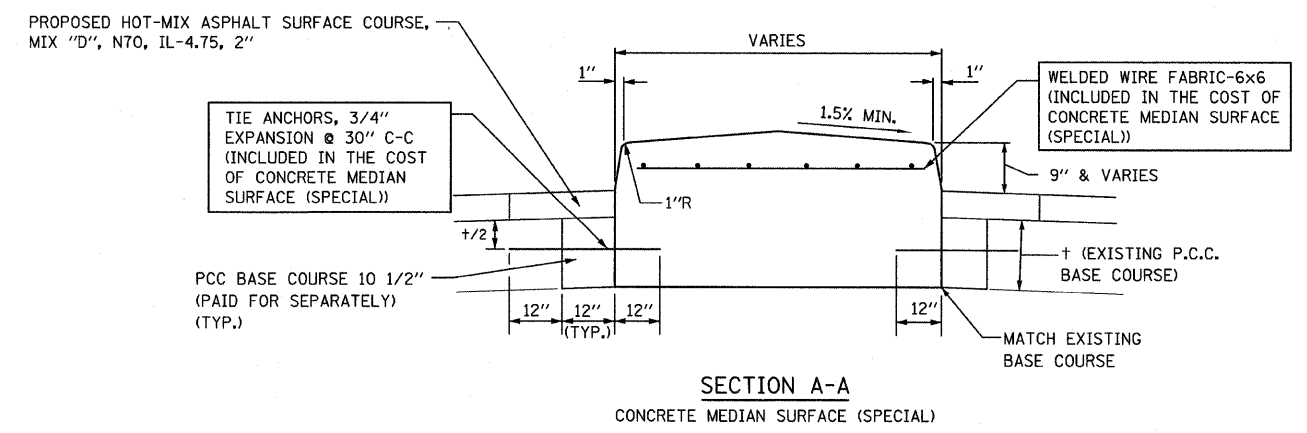
F.A.I. RTE.	SECTION	COUNTY	TOTAL SHEETS	SHEET NO.
94	*	COOK	22	15
STA.		TO STA.		
FED. ROAD DIST. NO.		ILLINOIS FED. AID PROJECT		
*(1516.1, 1717 & 1818) 1-5		62934		



- NOTE:
- ① ALL JOINTS ARE TOOLED CONTRACTION JOINTS UNLESS OTHERWISE NOTED.
  - ② ALL EXPANSION JOINTS SHALL BE 3/4" AND FULL DEPTH.
  - ③ ALL CONCRETE MEDIAN WALL SURFACES SHALL BE BROOM FINISHED PARALLEL TO THE TOOLED CONTRACTION JOINTS.



- NOTES:
1. DECORATIVE FINISH SHALL CONSIST OF A STIFF BROOM FINISH ON ENTIRE SURFACE AND SCORING LINES AT SPACING SHOWN IN PLAN VIEW. SCORING LINES SHALL BE MADE WITH A FINISH GROOVER (MARSHALLTOWN PART NO. 836 OR AN APPROVED EQUIVALENT).



REVISIONS	
NAME	DATE

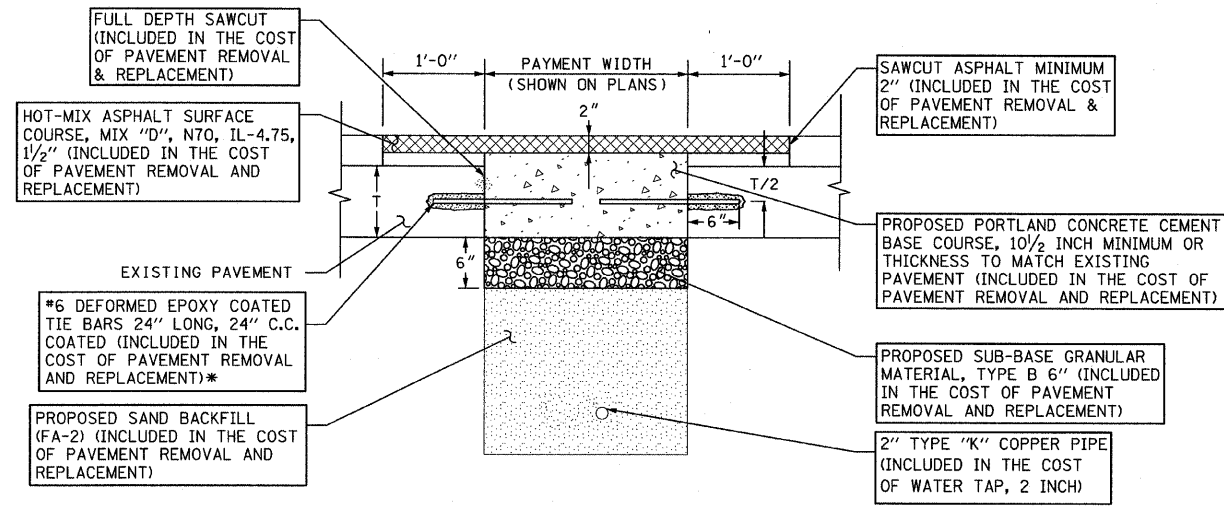
ILLINOIS DEPARTMENT OF TRANSPORTATION  
 F.A.I. 94 (DAN RYAN EXPRESSWAY)  
 75TH AND 76TH STREET  
 CONSTRUCTION DETAILS

SCALE: AS NOTED      DRAWN BY: WHI  
 DATE: JANUARY 30, 2008      CHECKED BY: JCM

FILE: L:\6592.02\Cad\Drawings\Contract\75\659202 Det02 ITG.dgn



F.A.I. RTE.	SECTION	COUNTY	TOTAL SHEETS	SHEET NO.
94	*	COOK	22	16
STA.		TO STA.		
FED. ROAD DIST. NO.		ILLINOIS FED. AID PROJECT		
* (1516.1, 1717 & 1818) 1-5				62934

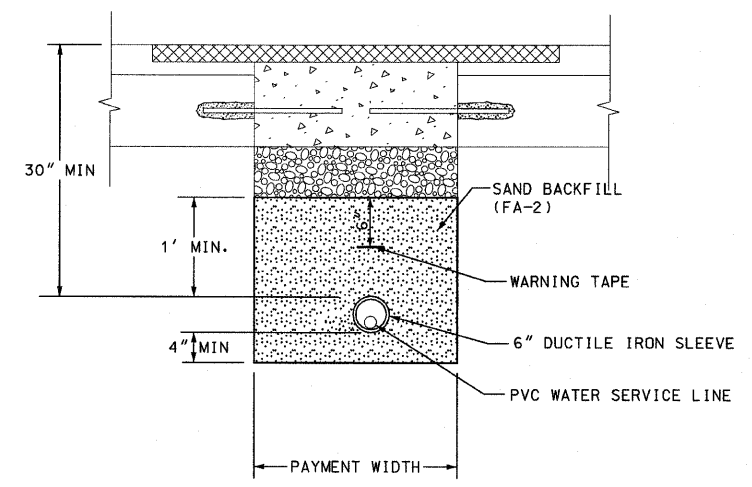


**PAVEMENT REMOVAL & REPLACEMENT**

\* DOWEL BARS MAY BE DELETED SUBJECT TO APPROVAL BY ENGINEER.

**NOTE:**

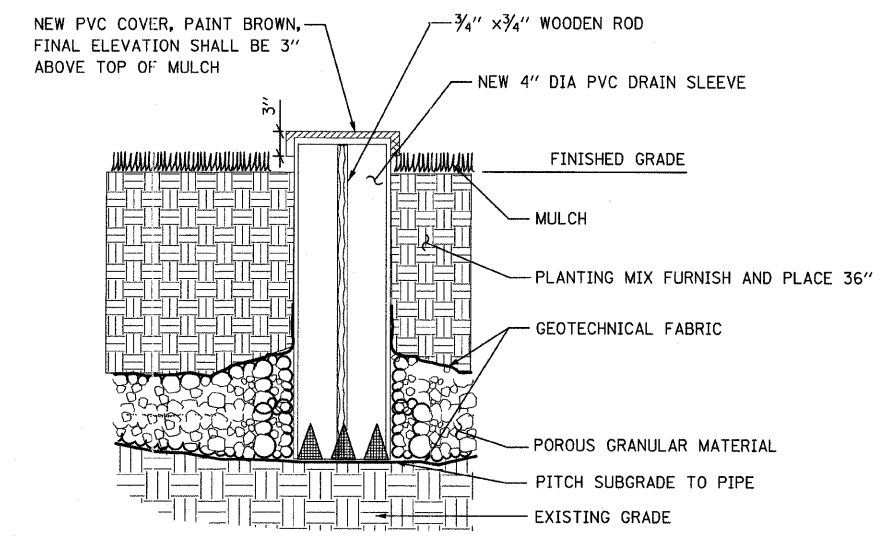
1. ALL TIE BARS AND DOWEL BARS TO BE EPOXY COATED INCLUDED IN THE COST OF PAVEMENT REMOVAL AND REPLACEMENT.
2. ADDITIONAL ONE FOOT (1') OF HOT-MIX ASPHALT REMOVAL ON EITHER SIDE OF CONCRETE PATCH SHALL BE REMOVED PRIOR TO PLACING HOT-MIX ASPHALT SURFACE COURSE, INCLUDED IN THE COST OF PAVEMENT REMOVAL AND REPLACEMENT.
3. ALL ITEMS SHOWN IN THIS DETAIL SHALL BE CONSIDERED INCLUDED IN THE CONTRACT UNIT PRICE FOR PAVEMENT REMOVAL AND REPLACEMENT, UNLESS OTHERWISE NOTED.



**WATER SERVICE LINE**

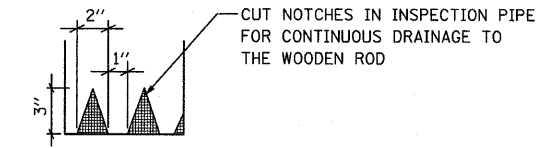
**NOTE:**

1. PIPE BEDDING, TAMPED IN PLACE 4" MIN. UNDER PIPE, 1'-0" ABOVE TOP OF PIPE. BEDDING MUST BE WELL SPADED ON BOTH SIDES OF PIPE.
2. ALL ITEMS SHOWN IN THIS DETAIL SHALL BE CONSIDERED INCLUDED IN THE CONTRACT UNIT PRICE FOR WATER SERVICE LINE, UNLESS OTHERWISE NOTED.



**INSPECTION PIPE 4 INCH**

NOT TO SCALE



**DRAIN SLEEVE ELEVATION**

FILE: I:\6592.02\Cad\Sheets\Contract\79\659202\_De103\_17c.dgn

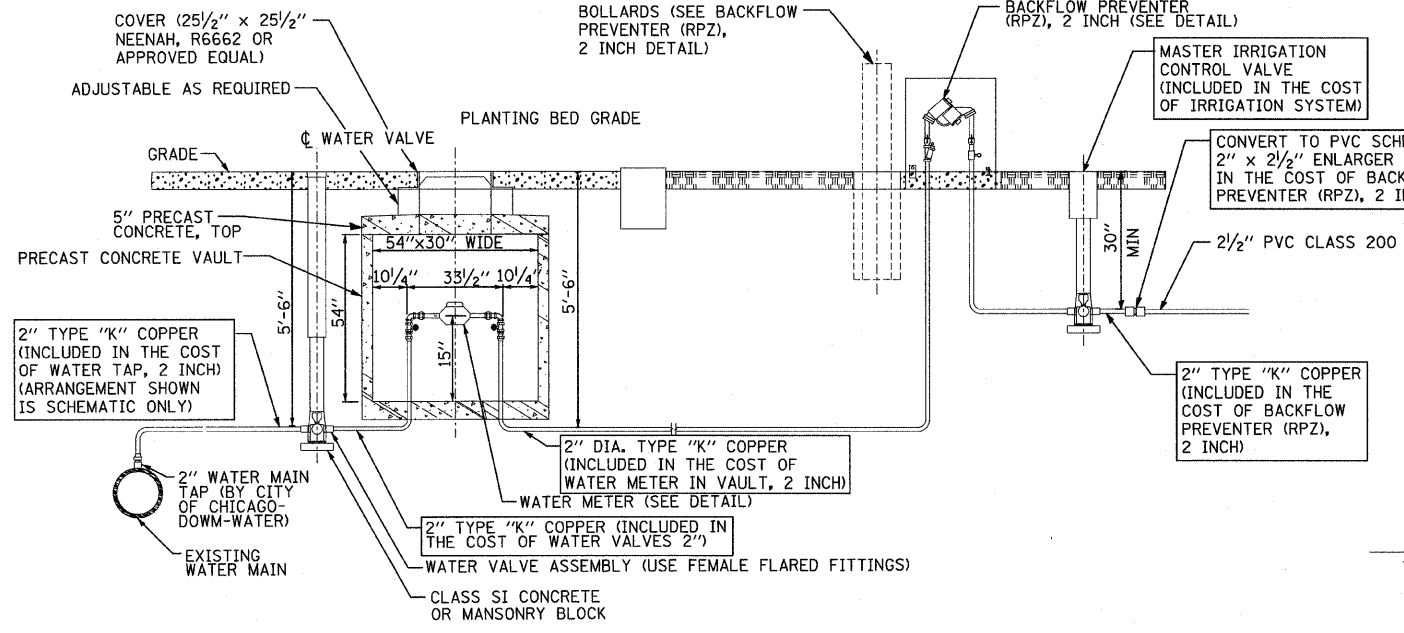
**KNIGHT**  
Engineers & Architects

REVISIONS	
NAME	DATE

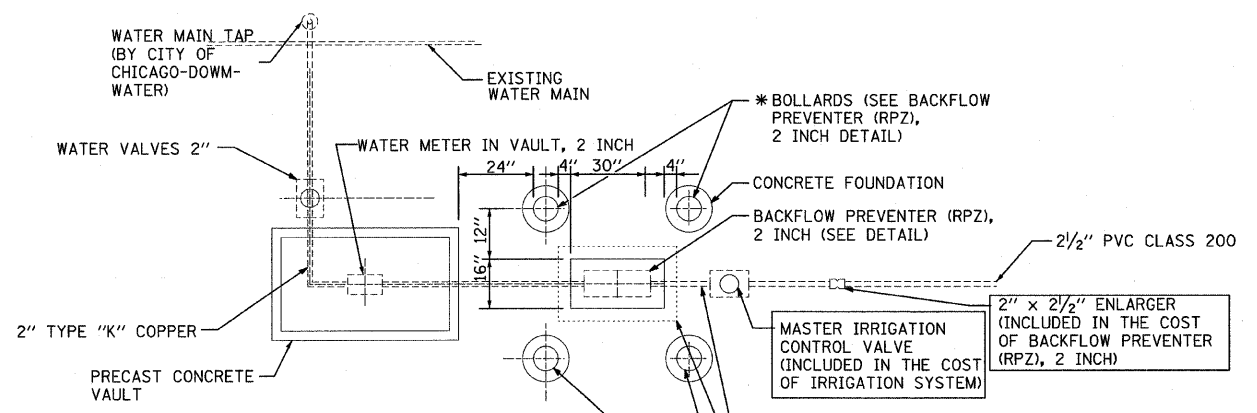
ILLINOIS DEPARTMENT OF TRANSPORTATION  
F.A.I. 94 (DAN RYAN EXPRESSWAY)  
  
75TH AND 76TH STREET  
CONSTRUCTION DETAILS  
  
SCALE: AS NOTED  
DATE: JANUARY 30, 2008  
  
DRAWN BY: WHI  
CHECKED BY: JCM



F.A.I. RTE.	SECTION	COUNTY	TOTAL SHEETS	SHEET NO.
94		COOK	22	17
STA.	TO STA.			
FED. ROAD DIST. NO.	ILLINOIS	FED. AID PROJECT		
• (1516.1, 1717 & 1818) 1-5			62934	

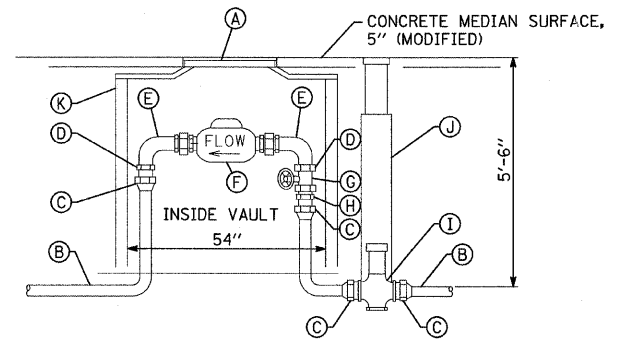


**TYPICAL METER INSTALLATION FOR 2" WATER SERVICE WITH BACKFLOW PREVENTER (RPZ), 2 INCH**  
N.T.S.



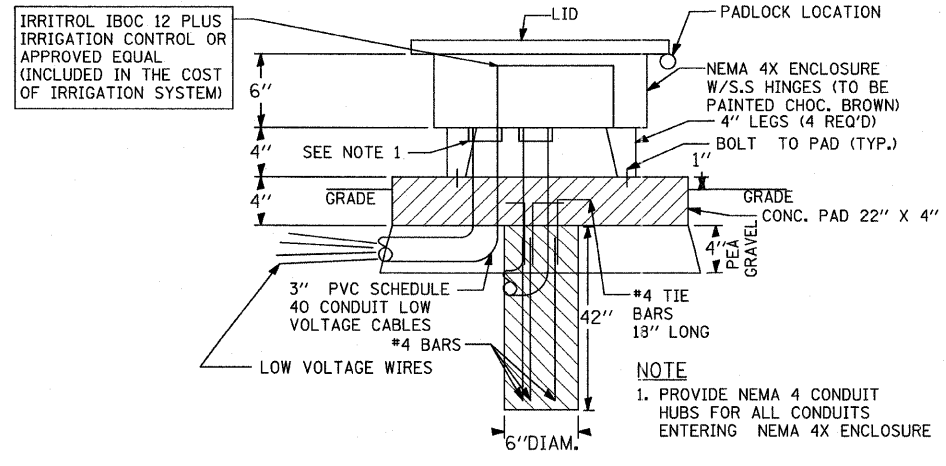
**WATER SERVICE CONNECTION PLAN (TYPICAL EQUIPMENT LAYOUT PLAN)**  
N.T.S.

- \* 2 BOLLARDS AT 67TH STREET BACKFLOW PREVENTER (RPZ), 2 INCH
- \*\* 4 BOLLARDS EACH AT 75TH AND 76TH STREET BACKFLOW PREVENTERS (RPZ), 2 INCH

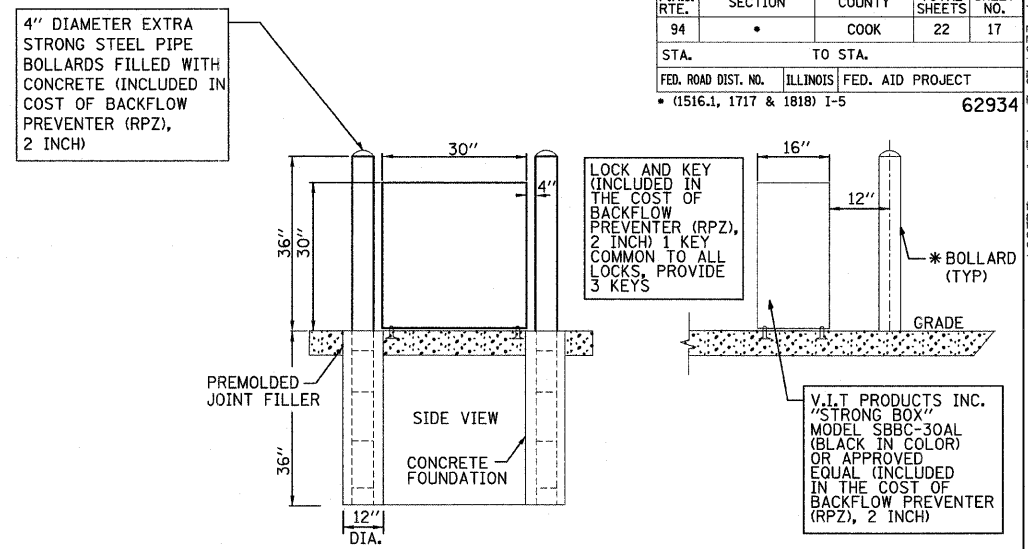


- |   |                               |
|---|-------------------------------|
| A | FRAME AND LID (NEENAH R6662)  |
| B | 2" TYPE "K" COPPER PIPE       |
| C | FEMALE FLARED FITTING         |
| D | BRASS BUSHING                 |
| E | BENT METER COUPLING           |
| F | METER                         |
| G | FULL PORT CONTROL VALVE       |
| H | MALE I.P.S. TO FLARED ADAPTER |
| I | ROUNDWAY                      |
| J | WATER VALVE ASSEMBLY          |
| K | PRECAST CONCRETE VAULT        |

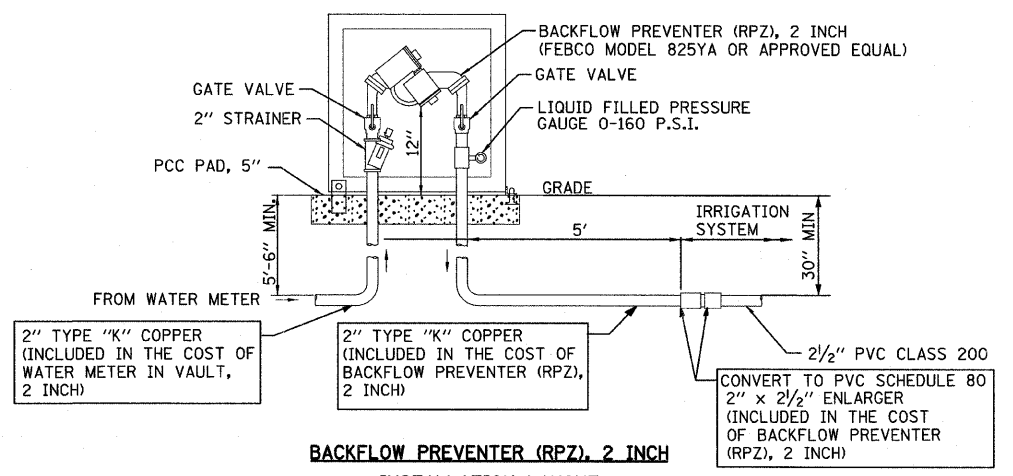
**NEW COPPER 2" WATER SERVICE STANDARD METER VAULT**  
N.T.S.



**IRRIGATION CONTROLLER NEMA 4X ENCLOSURE - DETAIL**  
N.T.S.



**DETAIL OF BACKFLOW PREVENTER (RPZ), 2 INCH ENCLOSURE AND BOLLARDS**  
N.T.S.



**BACKFLOW PREVENTER (RPZ), 2 INCH INSTALLATION LAYOUT**  
N.T.S.

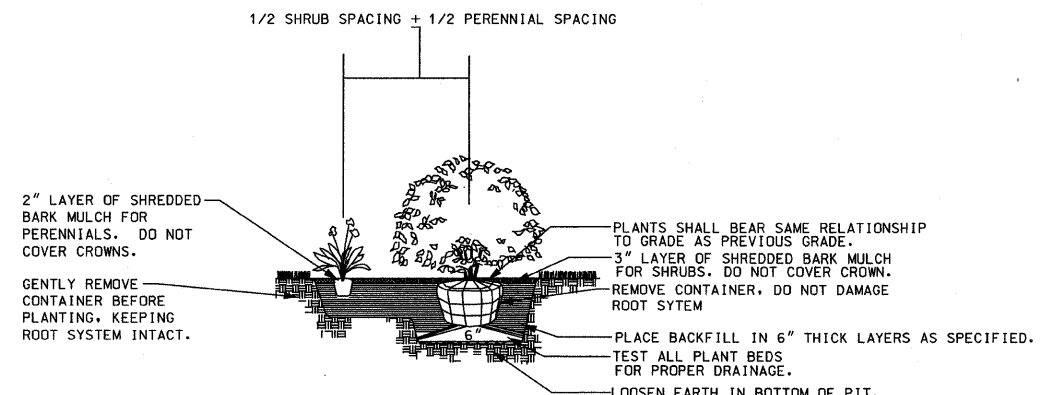
REVISIONS	
NAME	DATE

ILLINOIS DEPARTMENT OF TRANSPORTATION  
F.A.I. 94 (DAN RYAN EXPRESSWAY)  
MEDIAN PLANTERS - STANDARD METER VAULTS AND WATER SERVICE INSTALLATION DETAILS

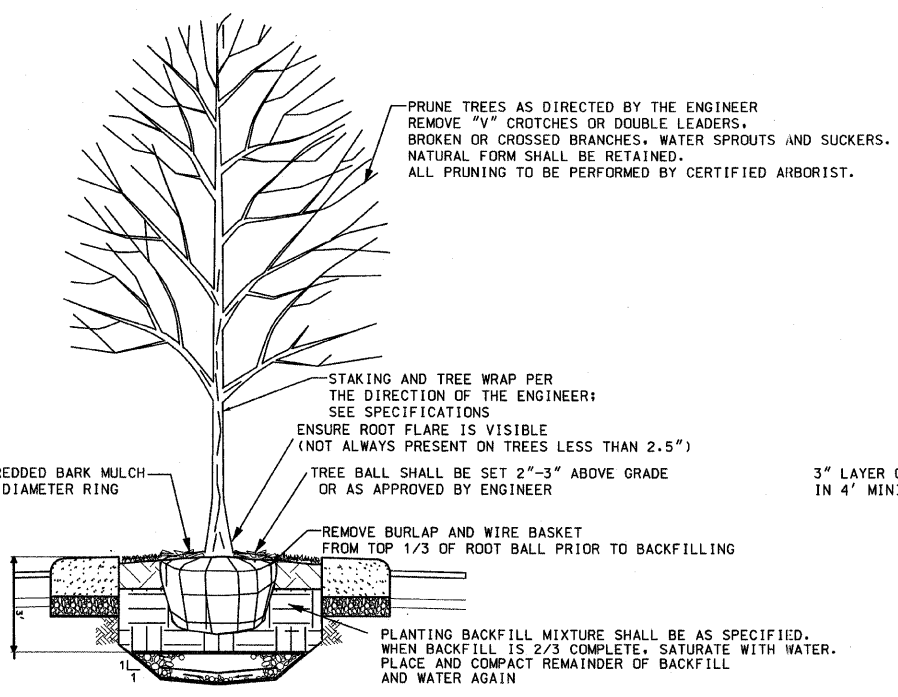
SCALE: AS NOTED  
DATE: JANUARY 30, 2008

DRAWN BY: JDF  
CHECKED BY: JPM

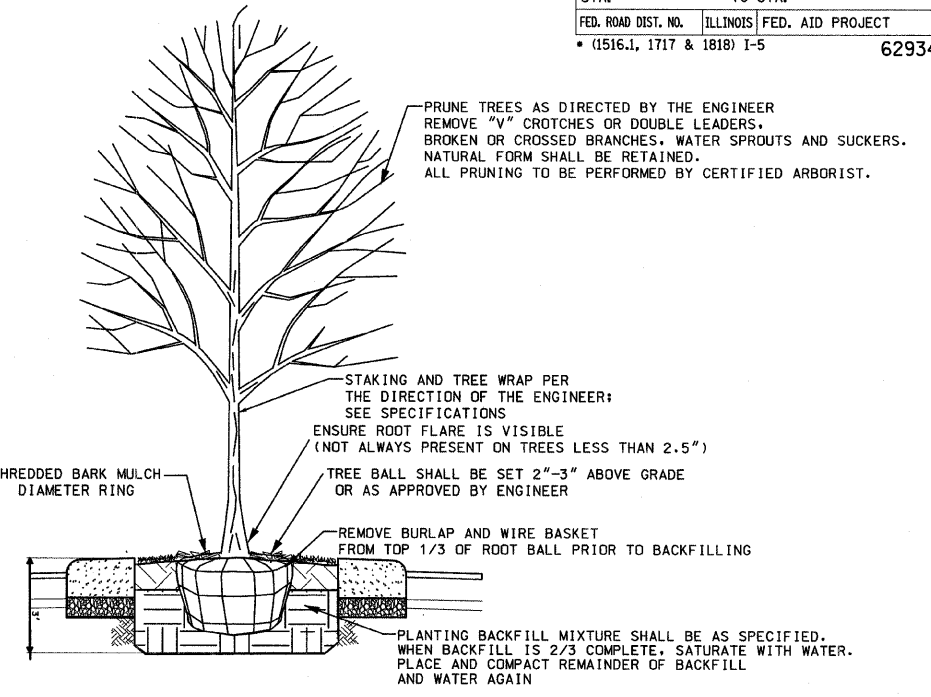
F.A.I. RTE.	SECTION	COUNTY	TOTAL SHEETS	SHEET NO.
94	*	COOK	22	18
STA.		TO STA.		
FED. ROAD DIST. NO.		ILLINOIS	FED. AID PROJECT	
* (1516.1, 1717 & 1818) I-5		62934		



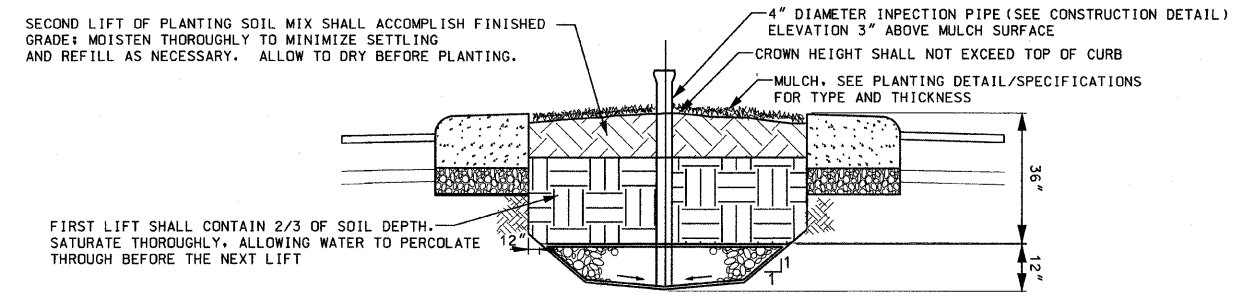
SHRUB AND PERENNIAL PLANTING DETAIL  
AT 75TH AND 76TH STREETS NTS



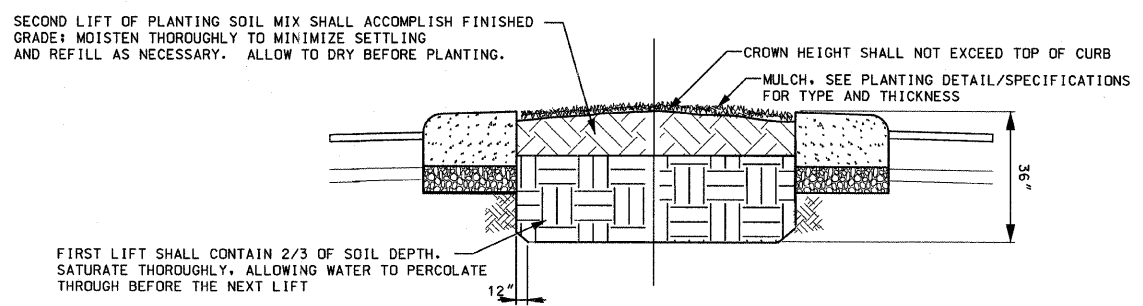
MEDIAN TREE PLANTING DETAIL  
AT 75TH AND 76TH STREETS NTS



MEDIAN TREE PLANTING DETAIL  
AT 67TH STREET NTS



SOIL DETAIL  
AT 75TH AND 76TH STREETS NTS



SOIL DETAIL AT TREES  
AT 67TH STREET NTS

**GENERAL NOTES:**

1. CONTRACTOR SHALL PERFORM DUE DILIGENCE IN LOCATING SPECIFIED PLANT MATERIAL.
2. NO SUBSTITUTIONS OF PLANT MATERIAL, QUANTITIES OR SIZES UNLESS APPROVED BY LANDSCAPE ARCHITECT.
3. LAYOUT TO BE APPROVED BY THE ENGINEER PRIOR TO PLANTING.
4. THE SPACE BETWEEN ADJACENT PLANTS WITH DIFFERENT ON-CENTER SPACING REQUIREMENTS WILL BE THE SUM OF 1/2 THE ON-CENTER DISTANCE FOR BOTH PLANTS.
5. ALL PLANT MATERIAL MASSES SHALL BE INSTALLED IN STAGGERED ROWS (TRIANGULATION METHOD) UNLESS OTHERWISE NOTED.
6. MULCH TO BE APPLIED EVENLY TO PLANTING BED, DO NOT COVER CROWNS OF PLANTS OR MOUND AT TRUNK.
7. TREE PLANTING METHOD WILL BE APPROVED BY THE ENGINEER PRIOR TO FULL SCALE INSTALLATION.
8. AREAS OF EXISTING TOPSOIL TO REMAIN SHALL BE WORKED TO A DEPTH OF NOT LESS THAN FOUR INCHES (4") ACCORDING TO THE REQUIREMENTS OF ARTICLE 252.03 OF THE STANDARD SPECIFICATIONS. THIS WORK SHALL BE INCLUDED IN THE COST OF THE PLANT MATERIAL.

TYLIN INTERNATIONAL

REVISIONS	
NAME	DATE

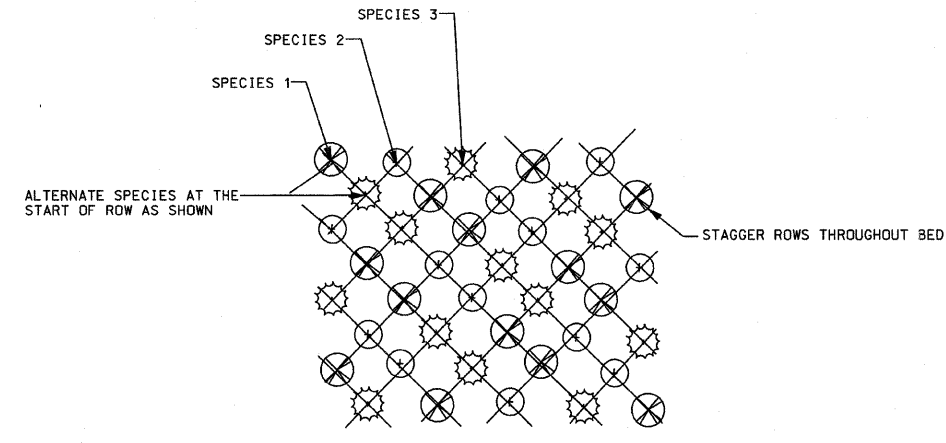
ILLINOIS DEPARTMENT OF TRANSPORTATION  
F.A.I. 94 (DAN RYAN EXPRESSWAY)

PLANTING BEDS  
LANDSCAPING PLAN DETAIL  
SHEET 1 OF 2

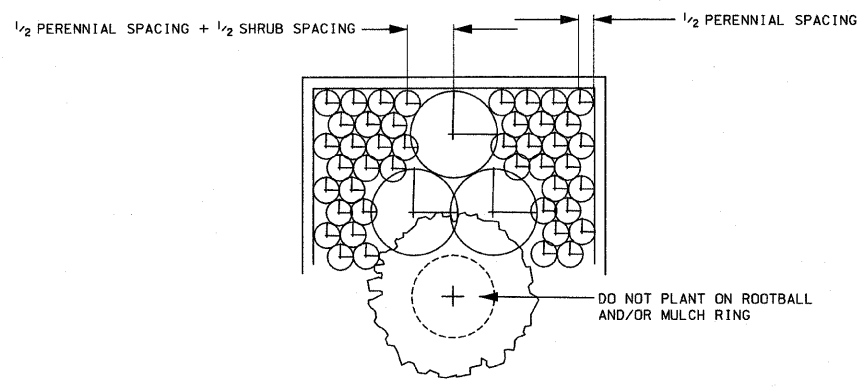
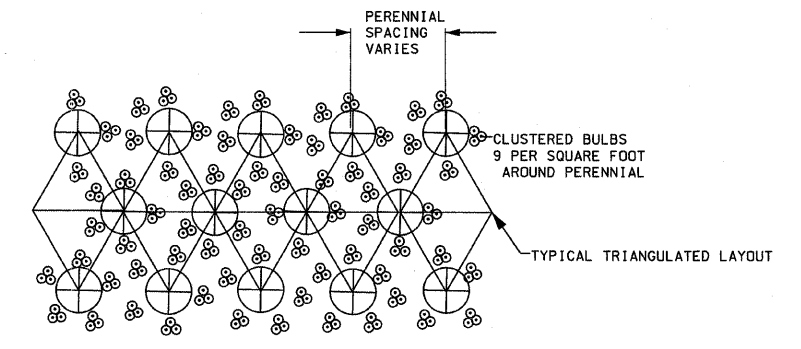
SCALE: AS NOTED  
DATE: JANUARY 30, 2008

DRAWN BY: JDF  
CHECKED BY: JPM

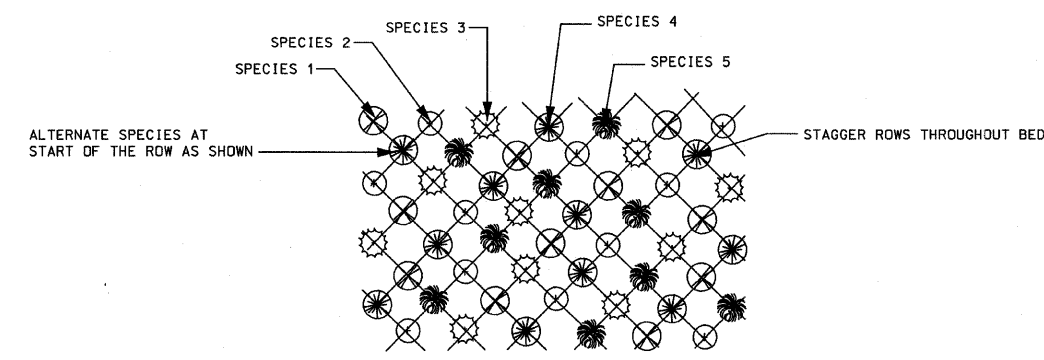
1/29/2008 11:25:00 AM P:\02\3\Road\01\gml\gml03a.dwg



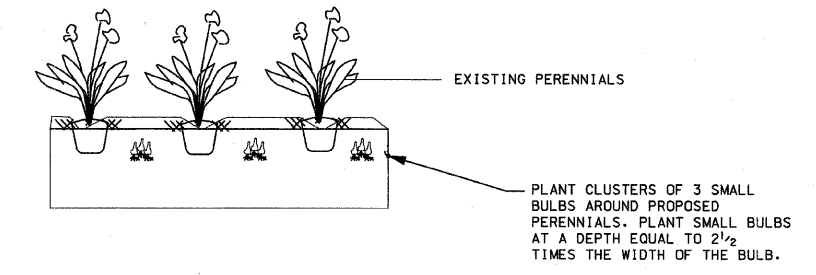
PERENNIAL PLANTING DETAIL (3 VARIETIES)  
DAYLILIES NTS



MIXED PLANTING DETAIL  
NTS



PERENNIAL PLANTING DETAIL (5 VARIETIES)  
DAYLILIES NTS



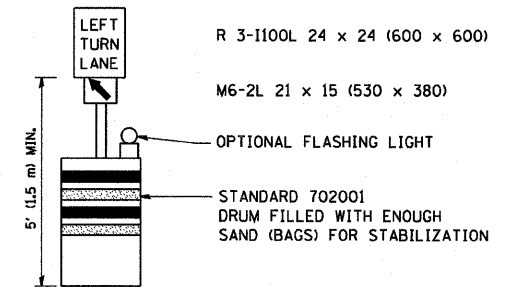
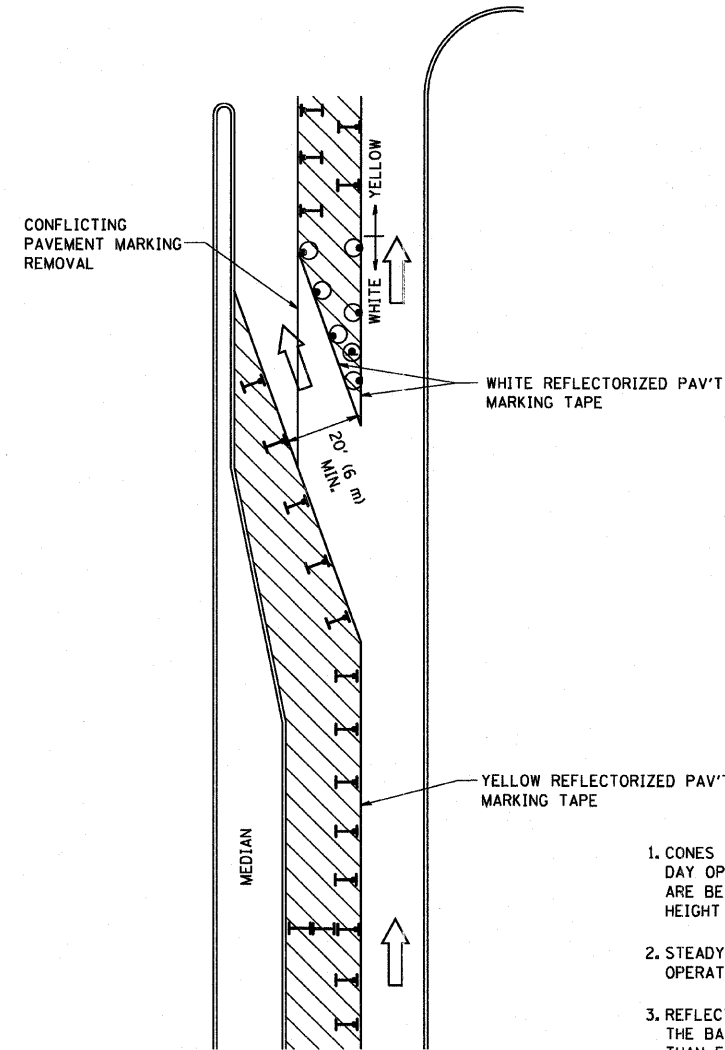
SMALL BULBS PLANTED WITH PERENNIALS  
DAFFODIL AND BLOODY CRANESBILL NTS

REVISIONS	
NAME	DATE

PA:02-31-3/road/col/gvnc/02-31-01.dgn 1/29/2008 11:52:00 AM

F.A. RTE.	SECTION	COUNTY	TOTAL SHEETS	SHEET NO.
94	*	COOK	22	20
STA.	TO STA.			
FED. ROAD DIST. NO.	ILLINOIS	FED. AID PROJECT		

\*(1516.1, 1717+1818) E-3


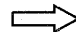



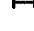


**GENERAL NOTES**

1. CONES MAY BE SUBSTITUTED FOR BARRICADES OR DRUMS AT HALF THE SPACING DURING DAY OPERATIONS. CONES SHALL BE A MINIMUM OF 28 (710) IN HEIGHT. WHEN CONES ARE BEING USED, THE "LEFT TURN LANE" SIGN MAY BE SKID MOUNTED AT A MINIMUM HEIGHT OF 5' (1.5 m).
2. STEADY BURNING LIGHTS WILL NOT BE REQUIRED ON BARRICADES OR DRUMS FOR DAY OPERATIONS. ALL LIGHTS SHALL BE MONODIRECTIONAL.
3. REFLECTORIZED TEMPORARY PAVEMENT MARKING TAPE SHALL BE PLACED THROUGHOUT THE BARRICADED AREA OF EACH TURN BAY WHERE THE CLOSURE TIME IS GREATER THAN FOURTEEN DAYS.
4. THIS APPLICATION ALSO APPLIES WHEN WORK IS BEING PERFORMED IN THE RIGHT LANE(S) AND THE RIGHT TURN BAY IS TO REMAIN OPEN. UNDER THIS CONDITION, "RIGHT TURN LANE" R3-100 24 x 24 (600 x 600) AND M6-2R 21 x 15 (530 x 380) SHALL BE USED.
5. THESE CONTROLS SHALL SUPPLEMENT MAINLINE TRAFFIC CONTROL FOR LANE CLOSURES.
6. LONGITUDINAL DIMENSIONS MAY BE ADJUSTED TO FIT FIELD CONDITIONS.
7. FORM BT 725 IS REQUIRED.
8. TRAFFIC CONTROL AND PROTECTION AT TURN BAYS (TO REMAIN OPEN TO TRAFFIC) SHALL BE INCLUDED IN THE COST SPECIFIED TRAFFIC CONTROL STANDARDS OR ITEMS.

All dimensions are in inches (millimeters) unless otherwise shown.

**LEGEND**

-  WORK AREA
-  LANE OPEN TO TRAFFIC
-  TYPE I OR II BARRICADE WITH STEADY BURN LIGHT
-  DRUM WITH STEADY BURN LIGHT
-  DRUM WITH SIGN (WITH OPTIONAL FLASHING LIGHT) SEE DETAIL
-  TYPE I OR II CHECK BARRICADE WITH FLASHING LIGHT

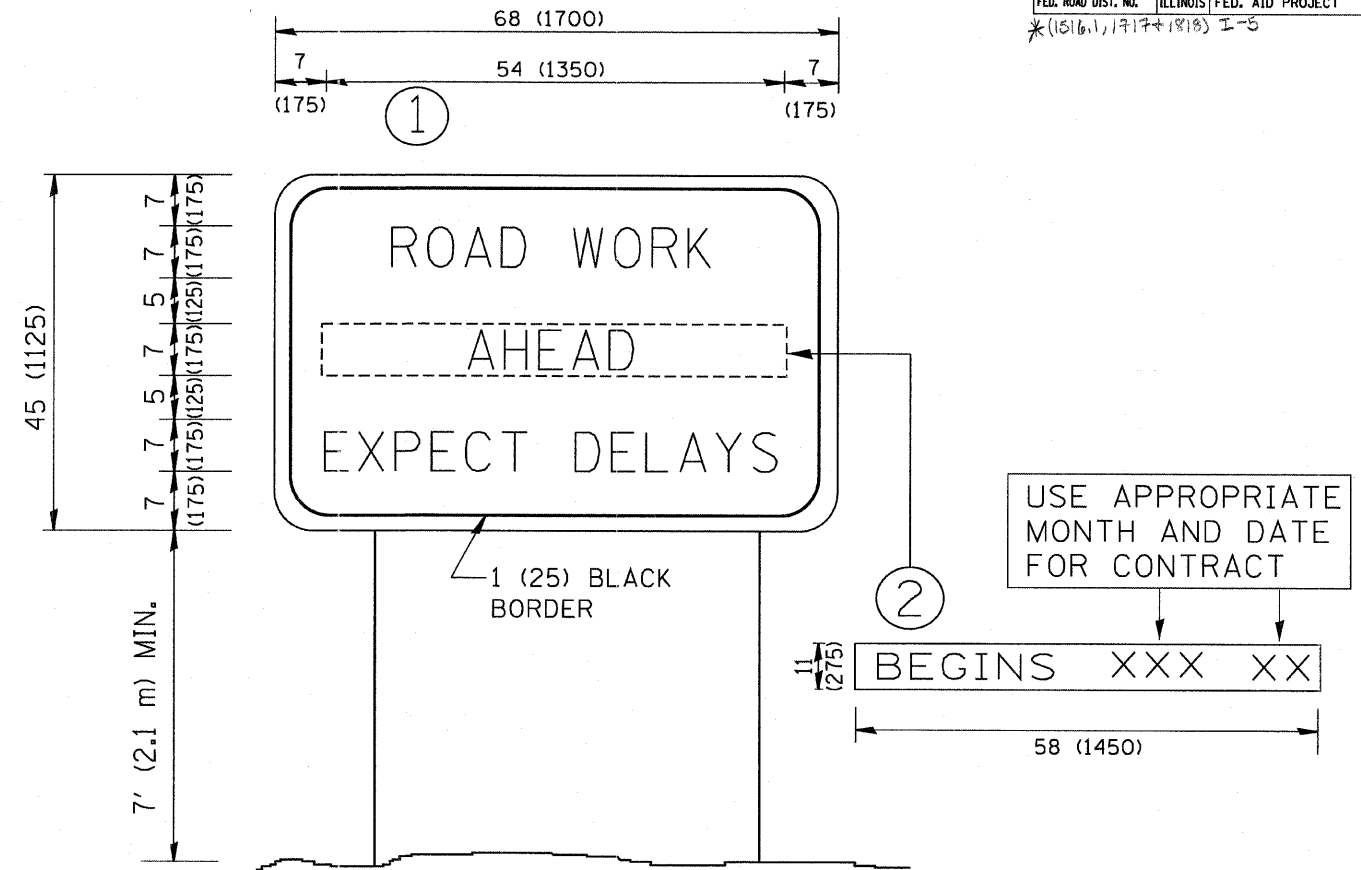
REVISIONS	
NAME	DATE
T. RAMMACHER	09/08/94
A. HOUSEH	11/07/95
A. HOUSEH	10/12/96
T. RAMMACHER	01/06/00

ILLINOIS DEPARTMENT OF TRANSPORTATION  
**TRAFFIC CONTROL AND PROTECTION  
 AT TURN BAYS  
 (TO REMAIN OPEN TO TRAFFIC)**

SCALE: NONE

DRAWN BY  
 CHECKED BY LHA

F.A. RTE.	SECTION	COUNTY	TOTAL SHEETS	SHEET NO.
94	*	COOK	22	20A
STA.		TO STA.		
FED. ROAD DIST. NO.		ILLINOIS FED. AID PROJECT		
*(1516.1, 1717+1818) I-5				



NOTES:

1. USE BLACK LETTERING ON ORANGE BACKGROUND.
2. ERECT SIGNS IN ADVANCE OF THE LOCATION FOR THE "ROAD CONSTRUCTION AHEAD" SIGN AT LOCATIONS AS DIRECTED BY THE ENGINEER.
3. ERECT SIGN ① WITH INSTALLED PANEL ② ONE WEEK PRIOR TO THE START OF CONSTRUCTION.
4. REMOVE PANEL ② SOON AFTER THE START OF CONSTRUCTION.
5. SEE SPECIAL PROVISION FOR "TEMPORARY INFORMATION SIGNING" FOR ADDITIONAL INFORMATION.
6. ONE SIGN ASSEMBLY EQUALS 25.70 SQ. FT. (2.3 SQ. M.)
7. SHALL BE PAID FOR AS TEMPORARY INFORMATION SIGNING.

ALL DIMENSIONS ARE IN INCHES (MILLIMETERS) UNLESS OTHERWISE SHOWN.

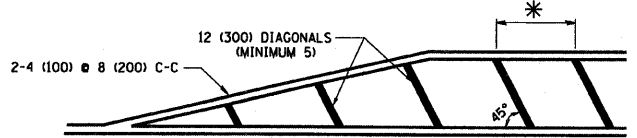
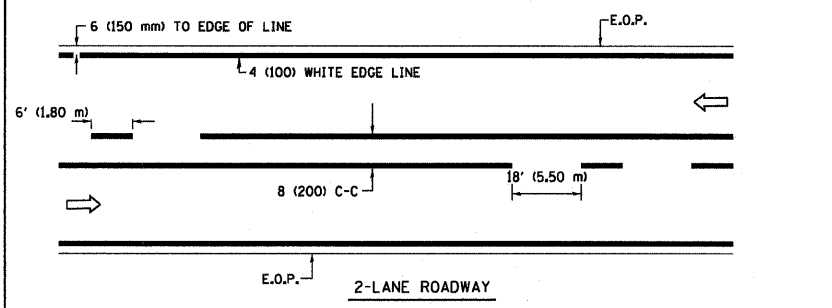
REVISIONS	
NAME	DATE
R. MIRS	9-15-97
R. MIRS	12-11-97
T. RAMMACHER	2-2-99
C. JUCIUS	1-31-07

ILLINOIS DEPARTMENT OF TRANSPORTATION  
ARTERIAL ROAD  
INFORMATION SIGN

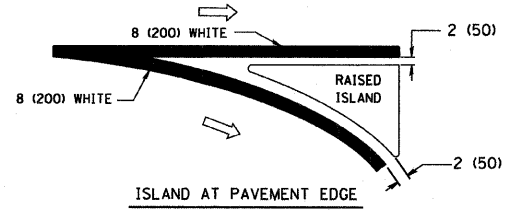
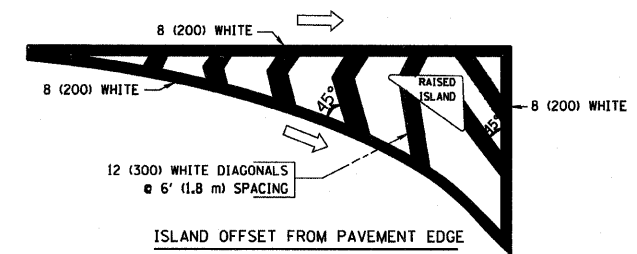
SCALE: NONE  
DRAWN BY DESIGN  
CHECKED BY  
TC22

PLOT DATE = 3/19/2007  
FILE NAME = K:\adistad\ac22.dgn  
PLOT SCALE = 0.8000 / IN.  
USER NAME = baurndf

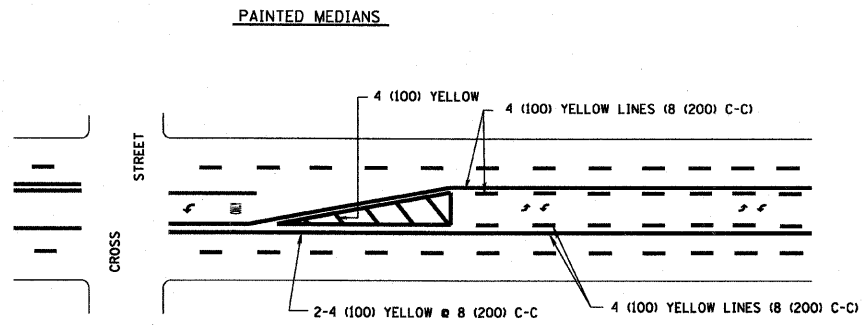
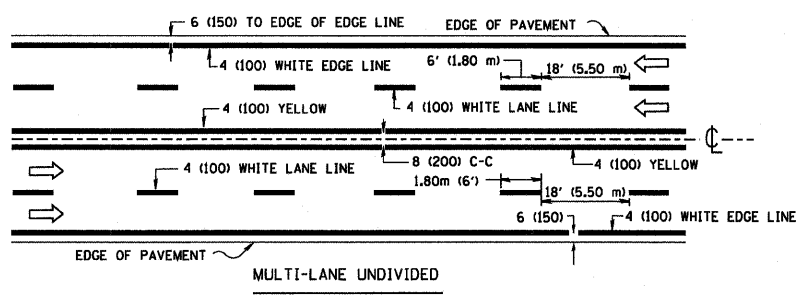
F.A. RTE.	SECTION	COUNTY	TOTAL SHEETS	SHEET NO.
94	*	COOK	72	21
STA.	TO STA.			
FED. ROAD DIST. NO.		ILLINOIS	FED. AID PROJECT	
*(1516.1, 1717 + 1818) I-5				



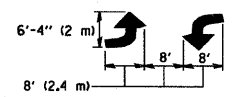
\* FOR MEDIAN LENGTHS WHERE DIAGONAL SPACING CANNOT BE ATTAINED, USE 5 (FIVE) EQUALLY SPACED DIAGONAL LINES.  
 \* DIAGONAL LINE SPACING: 20' (6.1 m) C-C



TYPICAL ISLAND MARKING

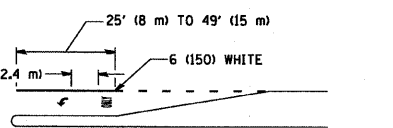
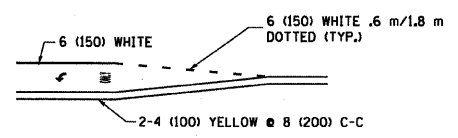
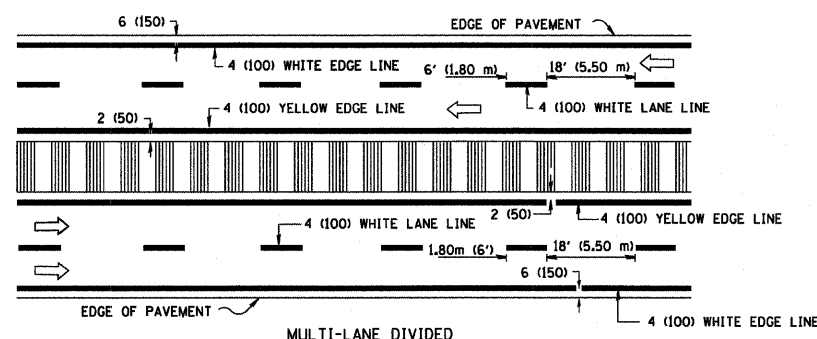


A MINIMUM OF TWO PAIRS OF TURN ARROWS SHALL BE USED, WHITE IN COLOR. ADDITIONAL PAIRS SHALL BE PLACED AT 200' (60 m) TO 300' (90 m) INTERVALS.



MEDIAN WITH TWO-WAY LEFT TURN LANE

TYPICAL PAINTED MEDIAN MARKING



FULL SIZE LETTERS 8' (2.4 m) AND ARROWS SHALL BE USED.  
 AREA = 15.8 SQ. FT. (1.47 m<sup>2</sup>) ONLY AREA = 22.9 SQ. FT. (2.13 m<sup>2</sup>)

\* TURN LANES IN EXCESS OF 400' (120 m) IN LENGTH MAY HAVE AN ADDITIONAL SET OF ARROW - "ONLY" INSTALLED MIDWAY BETWEEN THE OTHER TWO SETS OF ARROW - "ONLY".

TYPICAL LEFT (OR RIGHT) TURN LANE

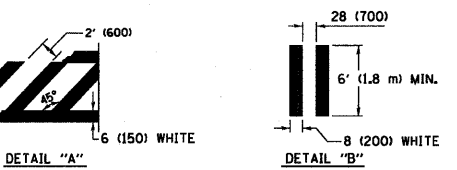
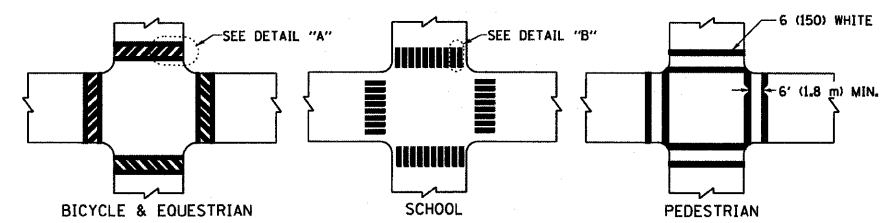
TYPICAL TURN LANE MARKING

TYPE OF MARKING	WIDTH OF LINE	PATTERN	COLOR	SPACING / REMARKS
CENTERLINE ON 2 LANE PAVEMENT	4 (100)	SKIP-DASH	YELLOW	6' (1.80 m) LINE WITH 18' (5.50 m) SPACE
CENTERLINE ON MULTI-LANE UNDIVIDED PAVEMENT	2 @ 4 (100)	SOLID	YELLOW	8 (200) C-C
NO PASSING ZONE LINES FOR ONE DIRECTION	4 (100)	SOLID	YELLOW	8 (200) C-C
NO PASSING ZONE LINES FOR BOTH DIRECTIONS	2 @ 4 (100)	SOLID	YELLOW	8 (200) C-C
LANE LINES	4 (100) 5 (125) ON FREEWAYS	SKIP-DASH SKIP-DASH	WHITE WHITE	6' (1.80 m) LINE WITH 18' (5.50 m) SPACE
DOTTED LINES (EXTENSIONS OF CENTER, LANE OR TURN LANE MARKINGS)	SAME AS LINE BEING EXTENDED	SKIP-DASH	SAME AS LINE BEING EXTENDED	2' (600) LINE WITH 6' (1.8) SPACE
EDGE LINES	4 (100)	SOLID	YELLOW-LEFT WHITE-RIGHT	OUTLINE MOUNTABLE MEDIANS IN YELLOW; EDGE LINES ARE NOT USED NEXT TO BARRIER CURB
TURN LANE MARKINGS	6 (150) LINE; FULL SIZE LETTERS & SYMBOLS (8' (2.4 m))	SOLID	WHITE	SEE TYPICAL TURN LANE MARKING DETAIL
TWO WAY LEFT TURN MARKING	2 @ 4 (100) EACH DIRECTION 8' (2.4 m) LEFT ARROW	SKIP-DASH AND SOLID IN PAIRS	YELLOW WHITE	6' (1.8 m) LINE WITH 18' (5.50 m) SPACE FOR SKIP-DASH; 8 (200) C-C BETWEEN SOLID LINE AND SKIP-DASH LINE SEE TYPICAL TWO-WAY LEFT TURN MARKING DETAIL
CROSSWALK LINES (PEDESTRIAN) A. DIAGONALS (BIKE & EQUESTRIAN) B. LONGITUDINAL BARS (SCHOOL)	2 @ 6 (150) 12 (300) @ 45° 8 (200) @ 90°	SOLID SOLID SOLID	WHITE WHITE WHITE	NOT LESS THAN 6' (1.8 m) APART 2' (600) APART 2'-4" (700) APART SEE TYPICAL CROSSWALK MARKING DETAILS.
STOP LINES	24 (600)	SOLID	WHITE	PLACE 4' (1.2 m) IN ADVANCE OF AND PARALLEL TO CROSSWALK, IF PRESENT. OTHERWISE, PLACE AT DESIRED STOPPING POINT, PARALLEL TO CROSSROAD CENTERLINE, WHERE POSSIBLE
PAINTED MEDIANS	2 @ 4 (100) WITH 12 (300) DIAGONALS @ 45°	SOLID	YELLOW; TWO WAY TRAFFIC WHITE; ONE WAY TRAFFIC	8 (200) C-C FOR THE DOUBLE LINE SEE TYPICAL PAINTED MEDIAN MARKING.
GORE MARKING AND CHANNELIZING LINES	8 (200) WITH 12 (300) DIAGONALS @ 45°	SOLID	WHITE	DIAGONALS: 20' (6.1 m) (LESS THAN 30 MPH (50 km/h))
RAILROAD CROSSING	24 (600) TRANSVERSE LINES; "RR" IS 6' (1.8 m) LETTERS; 16 (400) LINE FOR "X"	SOLID	WHITE	SEE STATE STANDARD 780001 AREA OF: "R"=3.6 SQ. FT. (0.33m <sup>2</sup> ) EACH "X"=54.0 SQ. FT. (5.0 m <sup>2</sup> )

FOR FURTHER DETAILS ON PAVEMENT MARKING REFER TO STREET MARKING STANDARDS, PRINTED BY CITY OF CHICAGO, DEPARTMENT OF TRANSPORTATION, BUREAU OF TRAFFIC.

ALL DIMENSIONS ARE IN INCHES (MILLIMETERS) UNLESS OTHERWISE SHOWN.

TYPICAL LANE AND EDGE LINE MARKING



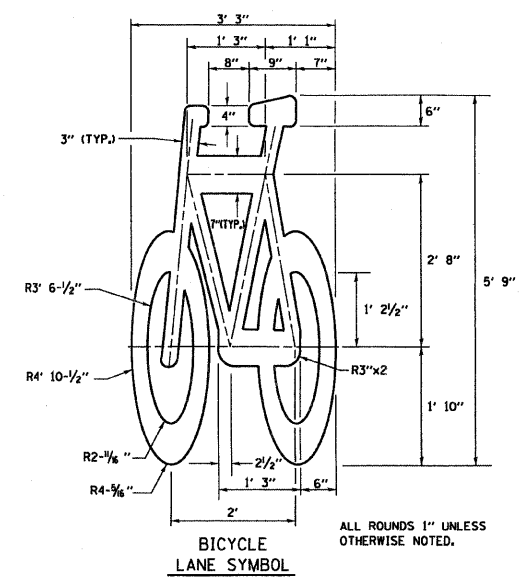
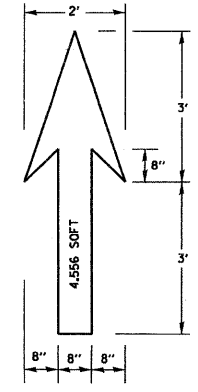
TYPICAL CROSSWALK MARKING

REVISIONS	
NAME	DATE
T. RAMMACHER	12/07/00

ILLINOIS DEPARTMENT OF TRANSPORTATION  
 CITY OF CHICAGO  
 TYPICAL PAVEMENT MARKINGS

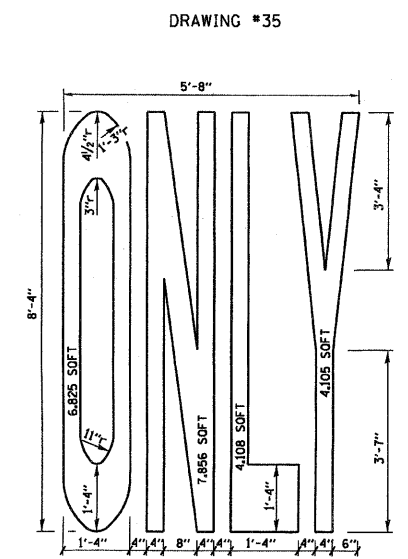
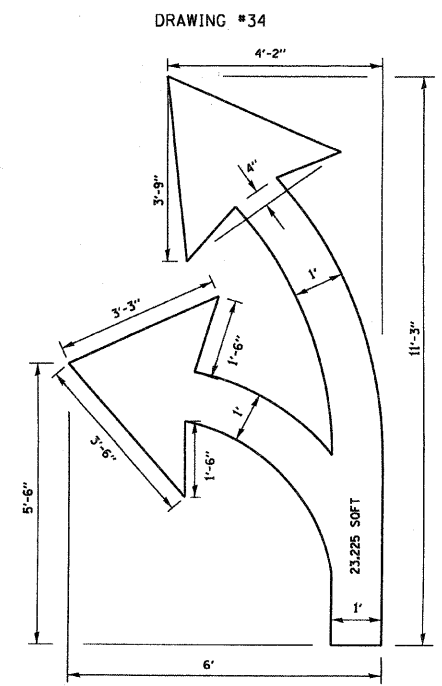
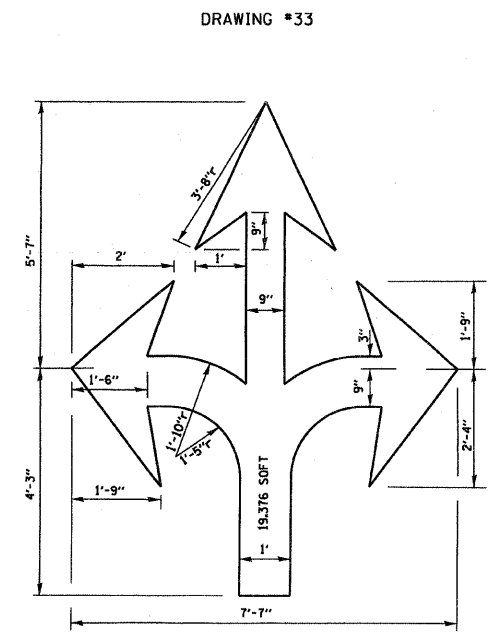
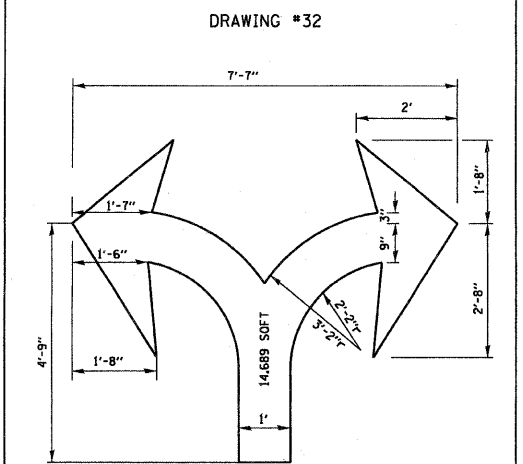
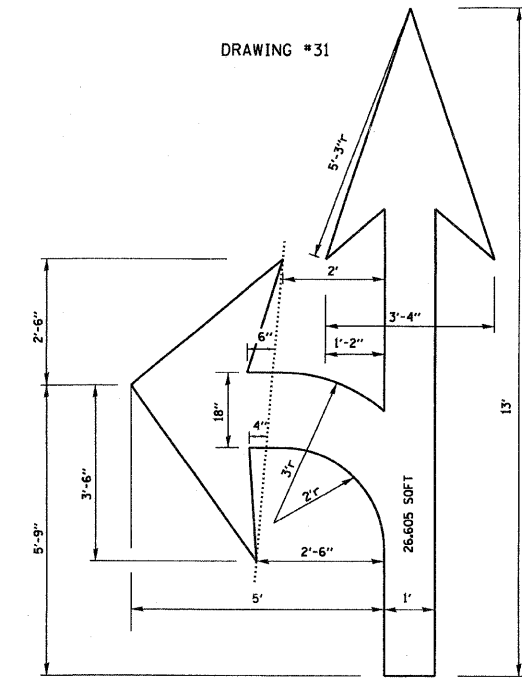
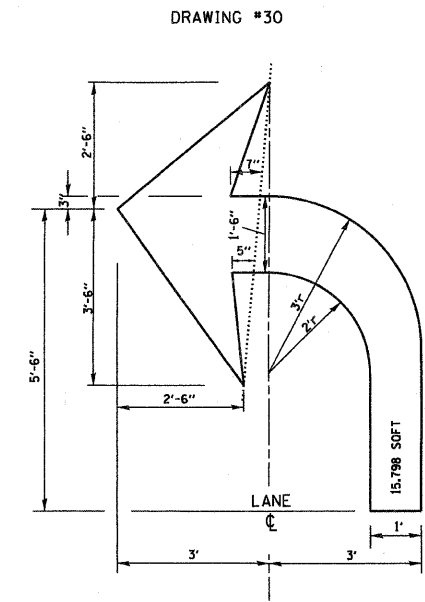
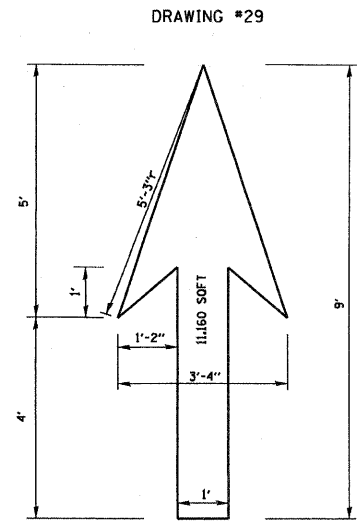
SCALE: NONE  
 DRAWN BY CADD  
 CHECKED BY  
 TC-24

PLOT DATE = 2/7/2007  
 FILE NAME = K:\projects\ac24.dgn  
 PLOT SCALE = 80.0000 / 1  
 USER NAME = bauerfd



**NOTE:**  
 1.) FOR BIKE LANE SYMBOLS ONLY, USE PRE-FORMED THERMOPLASTIC WITH A MINIMUM THICKNESS OF 90 MILS, MINIMUM SKID RESISTANCE VALUE OF 60 BPN, & A MINIMUM INDEX OF REFRACTION OF 1.50.  
 2.) THE RESIDENT ENGINEER SHALL CONTACT MR. BEN GOMBERG AT 312-744-8093 AT LEAST ONE CALENDAR WEEK PRIOR TO INSTALLING BIKE LANE SYMBOLS.

**TYPICAL BIKE LANE SYMBOLS**  
 DRAWING #28



**NOTE:**  
 ALL MARKINGS SHALL BE SOLID WHITE UNLESS OTHERWISE NOTED IN THE PLANS

REVISIONS	
NAME	DATE
T. RAMMACHER	12/07/00

ILLINOIS DEPARTMENT OF TRANSPORTATION  
**CITY OF CHICAGO**  
 TYPICAL PAVEMENT MARKINGS  
 SCALE: NONE  
 DRAWN BY  
 CHECKED BY  
 TC-24

PLOT DATE = 3/7/2007  
 FILE NAME = K:\data\1024.dgn  
 PLOT SCALE = 60.000 / IN.  
 USER NAME = bward