

F.A.I. RTE.	SECTION	COUNTY	TOTAL SHEETS	SHEET NO.
90/94	*	COOK	37	1
62992			12	39

STATE OF ILLINOIS
DEPARTMENT OF TRANSPORTATION
DIVISION OF HIGHWAYS

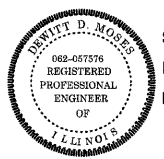
**PLANS FOR PROPOSED
FEDERAL AID HIGHWAY**

F.A.I. ROUTE 90/94 (DAN RYAN EXPRESSWAY)
SECTION (2323.6-2P&2324.6-1P)I

NORTHBOUND KNEE WALLS
(PERSHING RD TO 35TH ST)

COOK COUNTY
C-91-250-05

DESIGN NUMBER
D-91-417-01



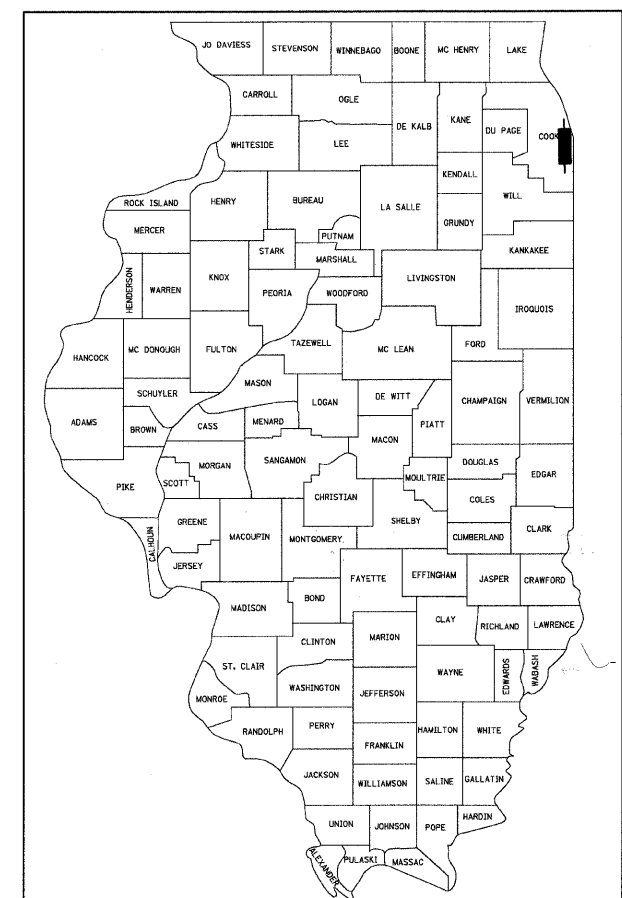
SIGNATURE *Dennis D. Moses*
DATE Feb. 7, 2008
EXPIRES Nov. 30, 2009



SIGNATURE *John D. Colwell*
DATE Feb. 7, 2008
EXPIRES Nov. 30, 2009



SIGNATURE *Brian L. Umbright*
DATE Feb. 7, 2008
EXPIRES Nov. 30, 2008



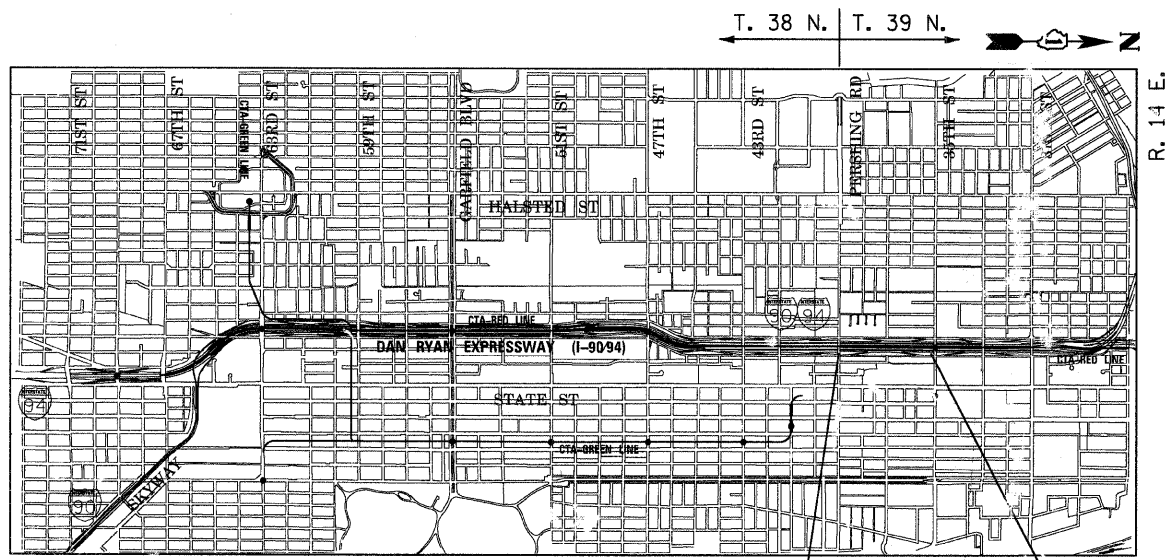
LOCATION OF SECTION INDICATED THIS: - [shaded area] -

PROJECT LOCATED IN CITY OF CHICAGO

DESIGN DESIGNATION

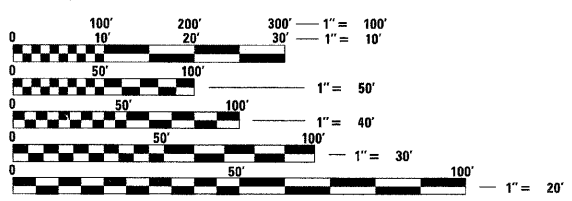
LA SALLE ST: 8275 (20) URBAN COLLECTOR

FRONTAGE ROAD:	ADT (2020)	DESIGN SPEED	POSTED SPEED
LA SALLE ST	15,000	30	25



PROJECT BEGINS
NB LA SALLE ST
STA 400+36

PROJECT ENDS
NB LA SALLE ST
STA 426+28

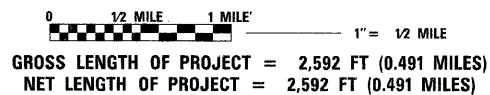


FULL SIZE PLANS HAVE BEEN PREPARED USING STANDARD ENGINEERING SCALES. REDUCED SIZED PLANS WILL NOT CONFORM TO STANDARD SCALES. IN MAKING MEASUREMENTS ON REDUCED PLANS, THE ABOVE SCALES MAY BE USED.

BEFORE EXCAVATING CALL:
CHICAGO UTILITY ALERT NETWORK
(312) 744-7000

CONTRACT NO. 62992

LOCATION MAP



STATE OF ILLINOIS
DEPARTMENT OF TRANSPORTATION
DIVISION OF HIGHWAYS

SUBMITTED FEBRUARY 8, 2008
Diana M. O'Keefe
DEPUTY DIRECTOR OF HIGHWAYS, REGION ENGINEER

March 21, 2008
Eric E. Haran
INTERIM ENGINEER OF DESIGN AND ENVIRONMENT

March 21, 2008
Christina M. Reed
DIRECTOR OF HIGHWAYS, CHIEF ENGINEER

PRINTED BY THE AUTHORITY
OF THE STATE OF ILLINOIS

BOWMAN, BARRETT & ASSOCIATES INC.
CONSULTING ENGINEERS
Chicago, Illinois
312.228.0100
www.bbandainc.com

DISTRICT ONE DESIGN/CONSULTANT SERVICES PROJECT MANAGER
RAJENDRA SHAH (847) 705-4555

FR:6601\cadd\gwin\31E\SHEETS\6601_31ECOVER.dgn