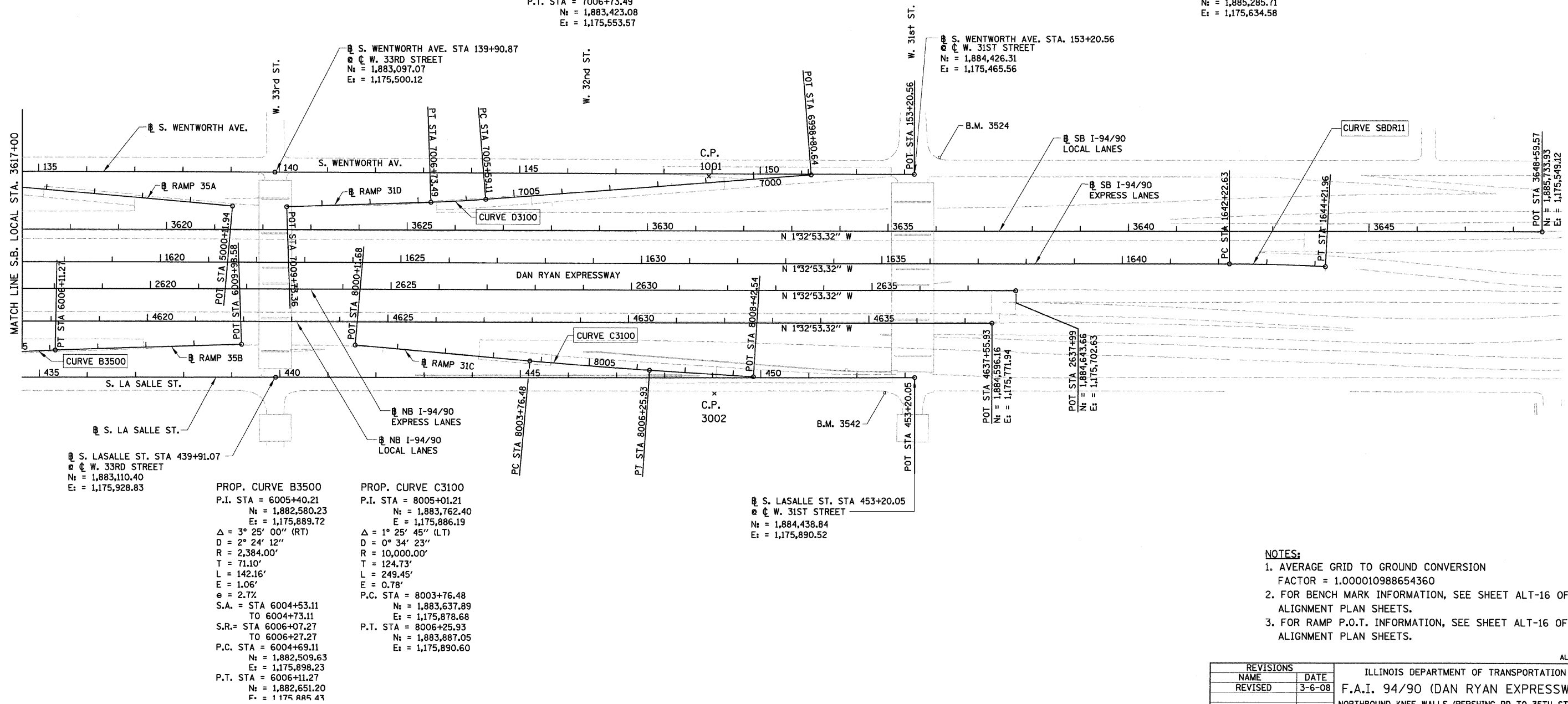


|                     |         |                           |              |           |
|---------------------|---------|---------------------------|--------------|-----------|
| F.A.I.              | SECTION | COUNTY                    | TOTAL SHEETS | SHEET NO. |
| 94/90               |         | COOK                      | 37           | 8         |
| STA.                |         | TO STA.                   |              |           |
| FED. ROAD DIST. NO. |         | ILLINOIS FED. AID PROJECT |              |           |
| 62992               |         | (2323.6-2P&2324.6-1P)     |              |           |

PROP. CURVE D3100  
P.I. STA = 7006+16.31  
N = 1,883,480.18  
E = 1,175,550.12  
Δ = 2° 35' 11" (RT)  
D = 2° 15' 40"  
R = 2,534.00'  
T = 57.20'  
L = 114.38'  
E = 0.65'  
e = 2.6%  
S.A. = STA 7005+43.11  
TO 7005+63.11  
S.R. = STA 7006+69.49  
TO 7006+89.49  
P.C. STA = 7005+59.11  
N = 1,883,537.06  
E = 1,175,544.09  
P.T. STA = 7006+73.49  
N = 1,883,423.08  
E = 1,175,553.57

PROP. CURVE SBDR11  
P.I. STA = 1643+22.32  
N = 1,885,186.06  
E = 1,175,631.95  
Δ = 3° 03' 18" (RT)  
D = 1° 31' 57"  
R = 3,738.57'  
T = 99.69'  
L = 199.33'  
E = 1.33'  
e = ±2.5% (MATCH EXISTING)  
S.A. = STA 1641+95.99  
TO 1642+35.95  
S.R. = N/A  
P.C. STA = 1642+22.63  
N = 1,885,086.40  
E = 1,175,634.65  
P.T. STA = 1644+21.96  
N = 1,885,285.71  
E = 1,175,634.58



S. LASALLE ST. STA 439+91.07  
W. 33RD STREET  
N = 1,883,110.40  
E = 1,175,928.83

PROP. CURVE B3500  
P.I. STA = 6005+40.21  
N = 1,882,580.23  
E = 1,175,889.72  
Δ = 3° 25' 00" (RT)  
D = 2° 24' 12"  
R = 2,384.00'  
T = 71.10'  
L = 142.16'  
E = 1.06'  
e = 2.7%  
S.A. = STA 6004+53.11  
TO 6004+73.11  
S.R. = STA 6006+07.27  
TO 6006+27.27  
P.C. STA = 6004+69.11  
N = 1,882,509.63  
E = 1,175,898.23  
P.T. STA = 6006+11.27  
N = 1,882,651.20  
E = 1,175,885.43

PROP. CURVE C3100  
P.I. STA = 8005+01.21  
N = 1,883,762.40  
E = 1,175,886.19  
Δ = 1° 25' 45" (LT)  
D = 0° 34' 23"  
R = 10,000.00'  
T = 124.73'  
L = 249.45'  
E = 0.78'  
P.C. STA = 8003+76.48  
N = 1,883,637.89  
E = 1,175,878.68  
P.T. STA = 8006+25.93  
N = 1,883,887.05  
E = 1,175,890.60

S. LASALLE ST. STA 453+20.05  
W. 31ST STREET  
N = 1,884,438.84  
E = 1,175,890.52

- NOTES:
1. AVERAGE GRID TO GROUND CONVERSION  
FACTOR = 1.000010988654360
  2. FOR BENCH MARK INFORMATION, SEE SHEET ALT-16 OF  
ALIGNMENT PLAN SHEETS.
  3. FOR RAMP P.O.T. INFORMATION, SEE SHEET ALT-16 OF  
ALIGNMENT PLAN SHEETS.

| REVISIONS |        |
|-----------|--------|
| NAME      | DATE   |
| REVISED   | 3-6-08 |
|           |        |
|           |        |
|           |        |
|           |        |

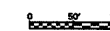
ILLINOIS DEPARTMENT OF TRANSPORTATION  
F.A.I. 94/90 (DAN RYAN EXPRESSWAY)  
NORTHBOUND KNEE WALLS (PERSHING RD TO 35TH STREET)

ALIGNMENT PLAN

SCALE: 1"=100'  
DATE: 03/06/08

DRAWN BY: JDC  
CHECKED BY: RS

BOWMAN, BARRETT & ASSOCIATES INC.  
CONSULTING ENGINEERS  
Chicago, Illinois  
312.228.0100  
www.bbandainc.com



ALT-04  
3/16/2008  
12:00:27 PM  
SHEETS 660-316-CAL Design