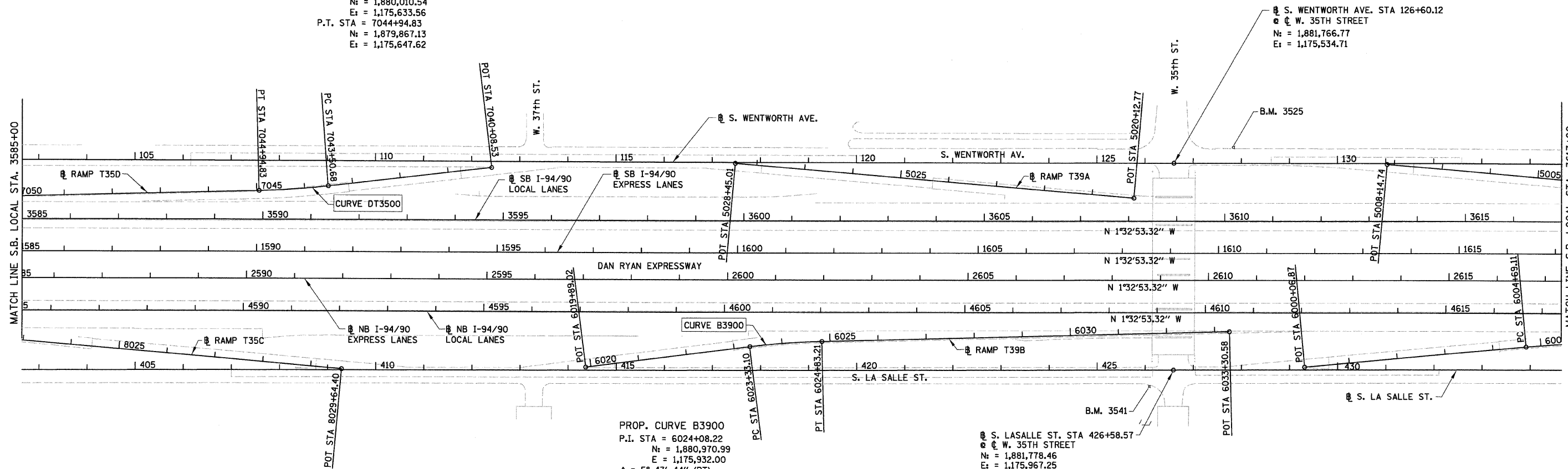
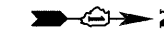


F.A.I.	SECTION	COUNTY	TOTAL SHEETS	SHEET NO.
94/90		COOK	20	7
STA.	TO STA.			
FED. ROAD DIST. NO.	ILLINOIS	FED. AID PROJECT		
62994	2324.6-IP-1-2			

PROP. CURVE DT3500
P.I. STA = 7044+22.81
N = 1,879,939.16
E = 1,175,643.87
Δ = 5° 14' 38" (RT)
D = 3° 38' 16"
R = 1,575.00'
T = 72.13'
L = 144.15'
E = 1.65'
e = 3.6%
S.A. = STA 7043+14.68
TO 7043+59.68
S.R. = STA 7044+85.83
TO 7045+30.83
P.C. STA = 7043+50.68
N = 1,880,010.54
E = 1,175,633.56
P.T. STA = 7044+94.83
N = 1,879,867.13
E = 1,175,647.62



PROP. CURVE B3900
P.I. STA = 6024+08.22
N = 1,880,970.99
E = 1,175,932.00
Δ = 5° 47' 44" (RT)
D = 3° 51' 39"
R = 1,484.00'
T = 75.12'
L = 150.11'
E = 1.90'
e = 3.7%
S.A. = STA 6022+97.10
TO 6023+42.10
S.R. = STA 6024+74.21
TO 6025+19.21
P.C. STA = 6023+33.10
N = 1,880,896.76
E = 1,175,943.46
P.T. STA = 6024+83.21
N = 1,881,046.01
E = 1,175,928.09

S. LASALLE ST. STA 426+58.57
@ W. 35TH STREET
N = 1,881,778.46
E = 1,175,967.25

- NOTES:
1. AVERAGE GRID TO GROUND CONVERSION FACTOR = 1.000010988654360
 2. FOR BENCH MARK INFORMATION, SEE SHEET ALT-16 OF ALIGNMENT PLAN SHEETS.
 3. FOR RAMP P.O.T. INFORMATION, SEE SHEET ALT-16 OF ALIGNMENT PLAN SHEETS.

REVISIONS	
NAME	DATE
REVISED	3-6-08

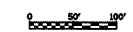
ILLINOIS DEPARTMENT OF TRANSPORTATION
F.A.I. 94/90 (DAN RYAN EXPRESSWAY)
NORTHBOUND KNEE WALLS (33RD ST TO 31ST ST)

ALIGNMENT PLAN

SCALE: 1"=100'
DATE: 03/06/08

DRAWN BY: JDC
CHECKED BY: RS

BOWMAN, BARRETT & ASSOCIATES INC.
CONSULTING ENGINEERS
Chicago, Illinois
312.228.0100
www.bbandainc.com



12/27/03 PM 3/6/2008