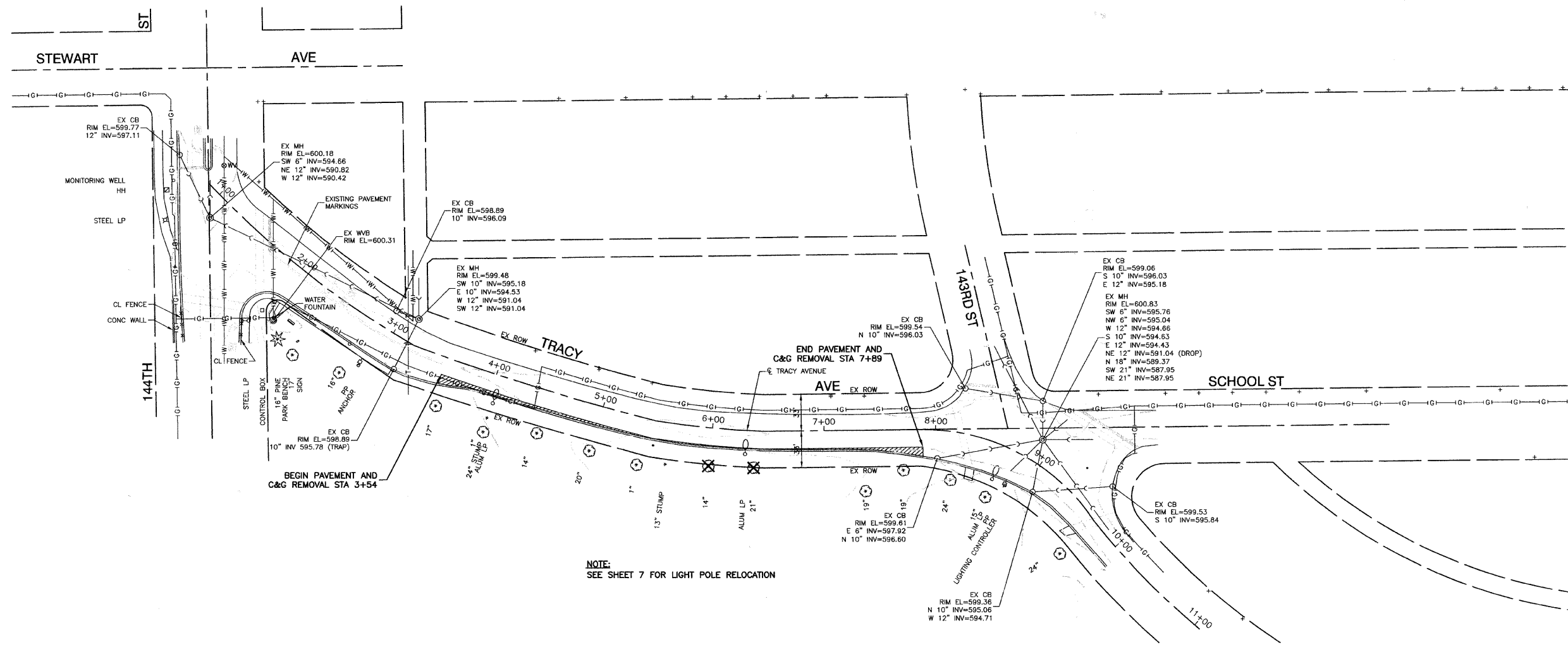
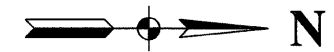


F. A. S. ETC.	SECTION	COUNTY	TOTAL SHEETS	SHEET NO.
	05-00113-00-PK	COOK	012	004
STA. 3+54		TO STA. 7+89		
FED. ROAD DIST. NO.	ALMOSE	FED. AID PROJECT		

CONTRACT NO. 63006



NOTE:
SEE SHEET 7 FOR LIGHT POLE RELOCATION

LEGEND

- TREE REMOVAL
- CURB & GUTTER REMOVAL
- PAVEMENT REMOVAL

REVISIONS	
NAME	DATE

BENCH MARK:
RR SPIKE SET IN WEST FACE OF WOOD LIGHT POLE AT NORTH WEST CORNER OF 143RD STREET AND TRACY AVENUE. ELEVATION=600.984

ILLINOIS DEPARTMENT OF TRANSPORTATION
IVANHOE METRA COMMUTER KISS 'N RIDE
REMOVAL PLAN

SCALE: VERT. 1"=50'
HORIZ. 1"=50'

DATE: 11-1-07

DRAWN BY: AG/EDG
CHECKED BY: PKB