

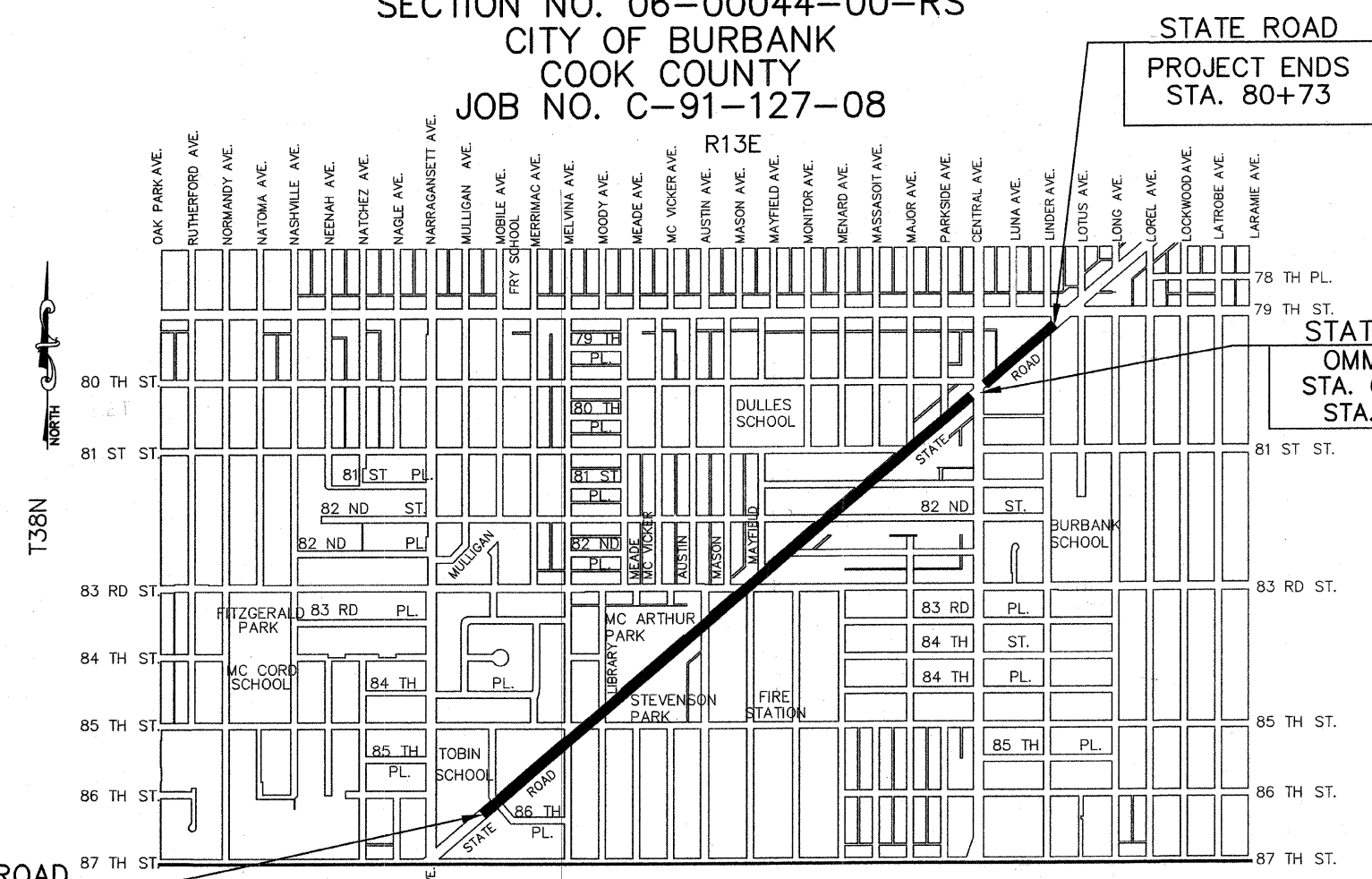
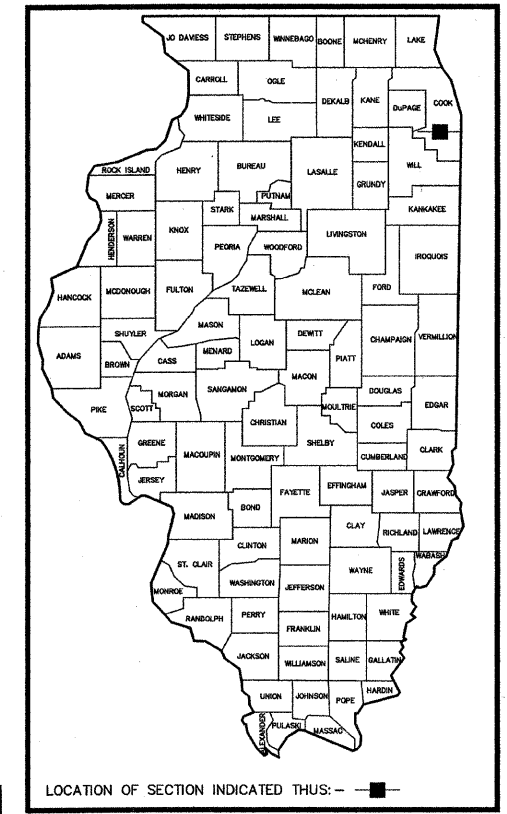
| FAU RTE        | SECTION          | COUNTY      | TOTAL SHEETS | SHEET NO. |
|----------------|------------------|-------------|--------------|-----------|
| 3577           | 06-00044-00-RS   | COOK        | 16           | 1         |
| F. HW. A. REG. | ILLINOIS PROJECT | M-8003(911) |              |           |

CONTRACT NO. 63010

STATE OF ILLINOIS  
DEPARTMENT OF TRANSPORTATION  
DIVISION OF HIGHWAYS  
PLANS FOR PROPOSED  
FEDERAL AID PROJECT

F.A.U. RTE. 3577 (STATE ROAD)  
FROM 87TH ST. TO 79TH ST.  
LAPP RESURFACING  
FEDERAL PROJECT M-8003(911)  
SECTION NO. 06-00044-00-RS  
CITY OF BURBANK  
COOK COUNTY  
JOB NO. C-91-127-08

FOR INDEX OF SHEETS AND INDEX OF STATE  
STANDARDS, SEE SHEET NO. 2



STATE ROAD  
PROJECT ENDS  
STA. 80+73

STATE ROAD  
OMMISSION  
STA. 69+23 to  
STA. 71+42

STATE ROAD  
PROJECT BEGINS  
STA. 8+75

— DENOTES LOCATION OF IMPROVEMENT  
LOCATION MAP

LENGTH OF PROJECT

GROSS LENGTH OF PROJECT 7,198 FEET (1.3633 MILES)  
NET LENGTH OF PROJECT 6,979 FEET (1.3218 MILES)

STATE ROAD ADT (2008) = 14,000  
POSTED SPEED LIMIT = 35 MPH  
DESIGN SPEED LIMIT = 35 MPH

PROJECT LOCATED IN THE  
CITY OF BURBANK  
STICKNEY TOWNSHIP  
NORTHWEST 1/4 SECTION 32  
NORTHEAST 1/4 SECTION 32  
SOUTHWEST 1/4 SECTION 32  
SOUTHEAST 1/4 SECTION 32  
NORTHWEST 1/4 SECTION 33

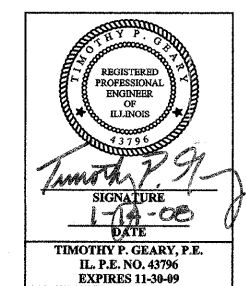
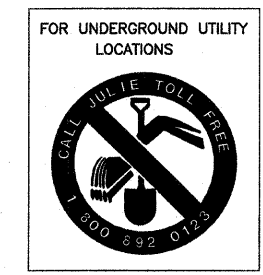
STATE OF ILLINOIS  
DEPARTMENT OF TRANSPORTATION  
DIVISION OF HIGHWAYS

APPROVED JANUARY 4 2008

CITY MAYOR Harry Klein

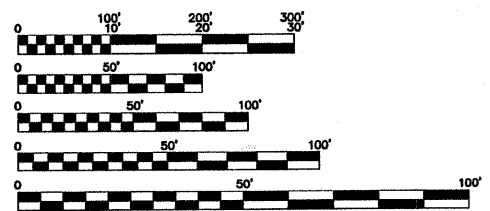
PASSED FEBRUARY 14 2008  
Christopher L. Butcher  
DISTRICT #1 ENGINEER OF LOCAL ROADS & STREETS

RELEASING FOR BID  
BASED ON LIMITED  
REVIEW FEBRUARY 14 2008  
Dianna M. O'Keefe  
DEPUTY DIRECTOR OF HIGHWAYS, REGION #1 ENGINEER



PRINTED BY THE AUTHORITY OF THE  
STATE OF ILLINOIS

FIELD ENGINEER: MELCHOR MANGOBA (847) 705-4408  
CONSULTANT: FRANK NOVOTNY AND ASSOCIATES, INC. (630) 887-8640



FULL SIZE PLANS HAVE BEEN PREPARED USING STANDARD  
ENGINEERING SCALES. REDUCED SIZED PLANS WILL NOT  
CONFORM TO STANDARD SCALES. IN MAKING MEASUREMENTS  
ON REDUCED PLANS, THE ABOVE SCALES MAY BE USED.

CONTRACT NO. 63010

| REVISIONS |     |       |
|-----------|-----|-------|
| NO.       | BY  | DATE  |
| 1         | BAH | 12/07 |
|           |     |       |
|           |     |       |

DESIGN DESIGNATION:  
14000(08) MAJOR COLLECTOR  
3.50 (PCC-20)