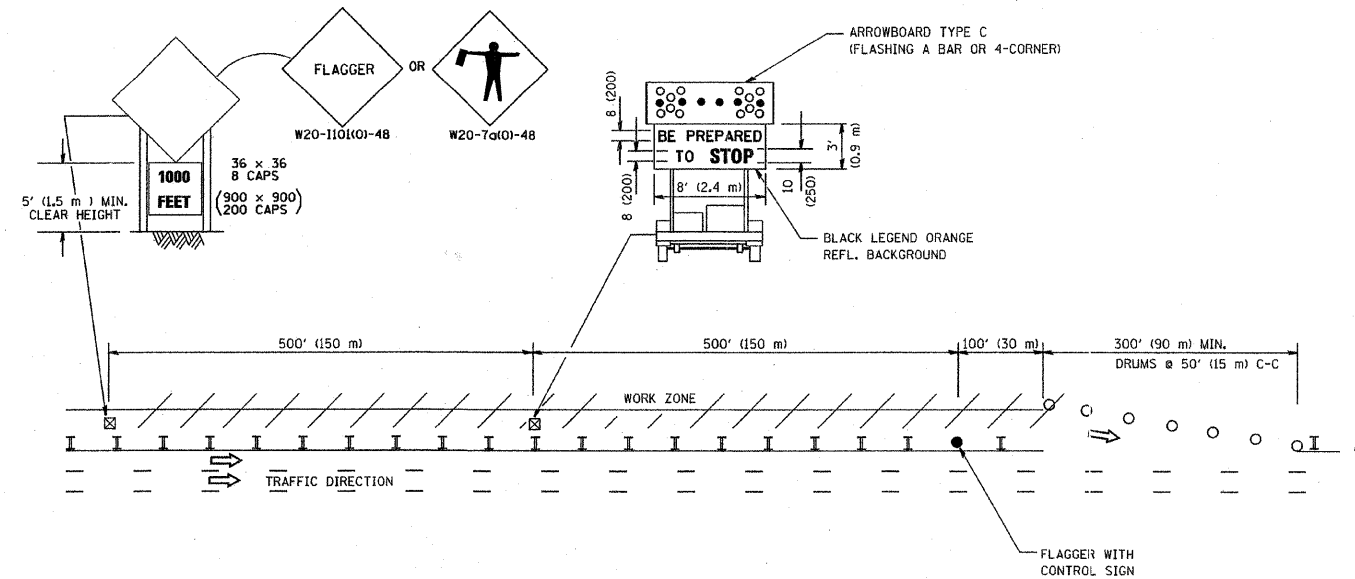


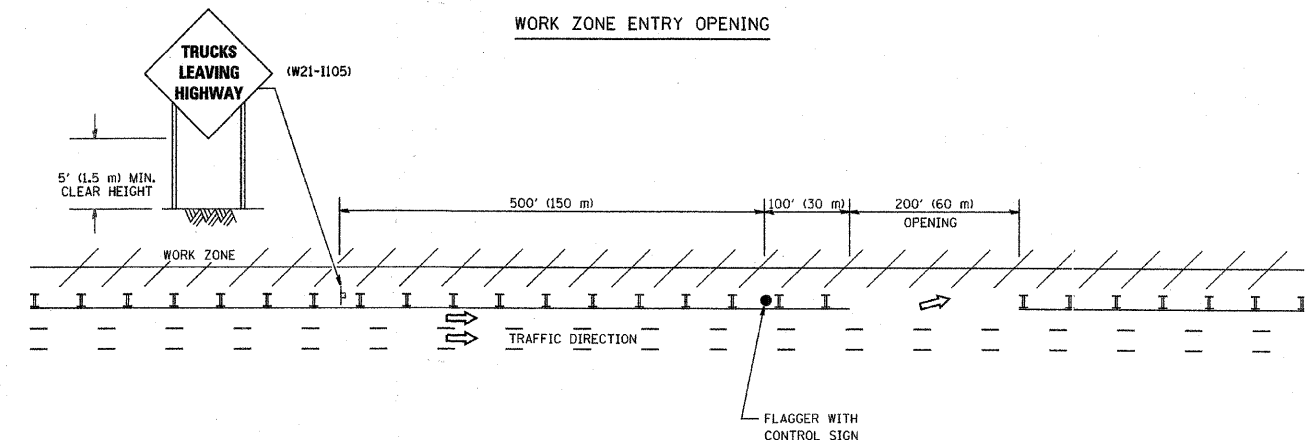
SIGNING FOR FLAGGING OPERATIONS AT WORK ZONE OPENINGS

FAU RTE	SECTION	COUNTY	TOTAL SHEETS	SHEET NO.
3577	06-00044-00-RS	COOK	16	12
F. HW. A. REC.	ILLINOIS PROJECT	M-8003(911)	CONTRACT NO. 63010	

WORK ZONE EXIT OPENING



WORK ZONE ENTRY OPENING



NOTES:

1. The Arrowboard, the Flagger Ahead trailer mounted sign, and the Trucks Leaving Highway sign shall be removed or turned away from traffic and the exit and entry openings shall be closed when the flagging operation ceases.
2. Work Zone Exit Openings should be a minimum of one half mile apart.
3. Exiting the work zone at any place other than at a Work Zone Exit Opening will be prohibited.
4. All vehicles shall enter the work zone at entry openings, using their turn signals to warn motorists

ALL DIMENSIONS ARE IN INCHES (MILLIMETERS) UNLESS OTHERWISE SHOWN

REVISIONS	
NO.	DATE
DWS	8/98
JAF	4/03
JAF	2/06
SPB	1/07

ILLINOIS DEPARTMENT OF TRANSPORTATION
SIGNING FOR FLAGGING OPERATIONS AT WORK ZONE OPENINGS

SCALE: NONE
DATE: 1/4/2007

DRAWN BY CADD
CHECKED BY TC-18

REVISION DATE: 01/01/07

PLOT DATE = 1/4/2007
FILE NAME = c:\p\projects\adhd\std\adhd\std.dgn
PLOT SCALE = 50.0000 / IN.
USER NAME = jarewrt

Frank Novotny & Associates, Inc.
Civil Engineers/Municipal Consultants
825 Midway Drive • Willowbrook, IL • 60527 • Telephone: (630) 887-8640 • Fax: (630) 887-0132
Illinois Professional Design Firm No. 184-000928

PROJECT CITY OF BURBANK, ILLINOIS
STATE ROAD LAPP RESURFACING
87th STREET to 79th STREET
MFT SECTION NO. 06-00044-00-RS

REVISIONS			
NO.	BY	DATE	DESCRIPTION
1	BAH	12/07	PER IDOT REVIEW

SIGNING FOR FLAGGING OPERATIONS AT WORK ZONE OPENINGS

PROJECT NO. 05480	SCALE AS NOTED	SHEET 12
DRAWN/DESIGNED JFP/TPG	DATE OCT., 2007	OF 16
CHECKED/APPROVED TPG	FIELD BOOK NO. FILE	SHEETS