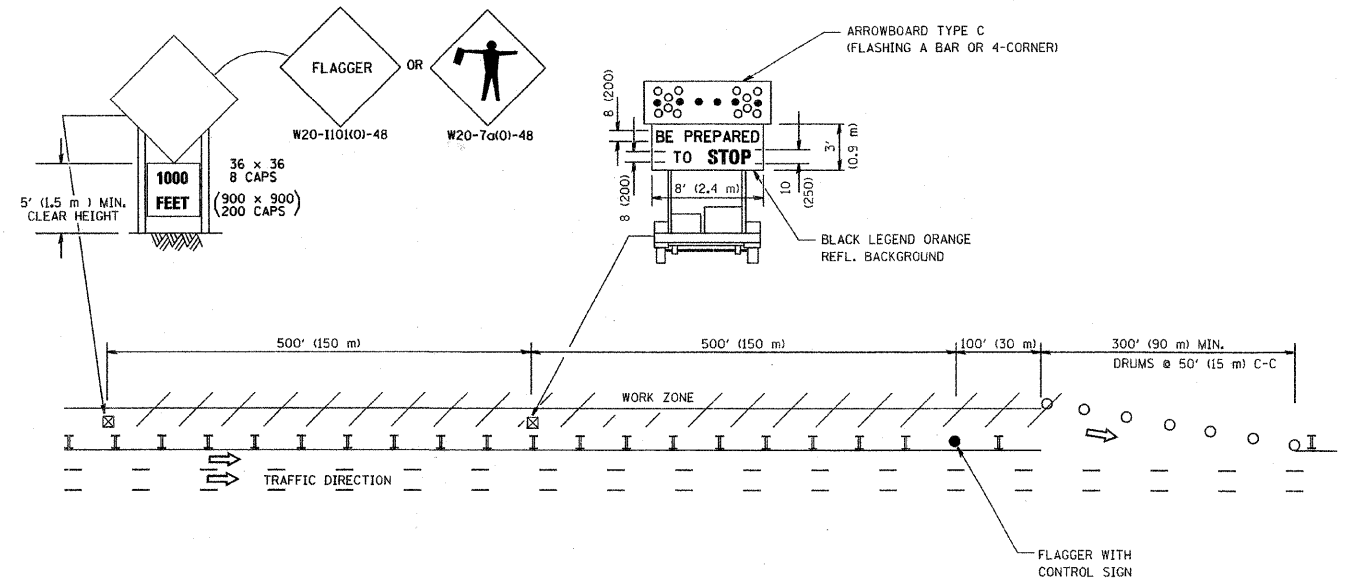


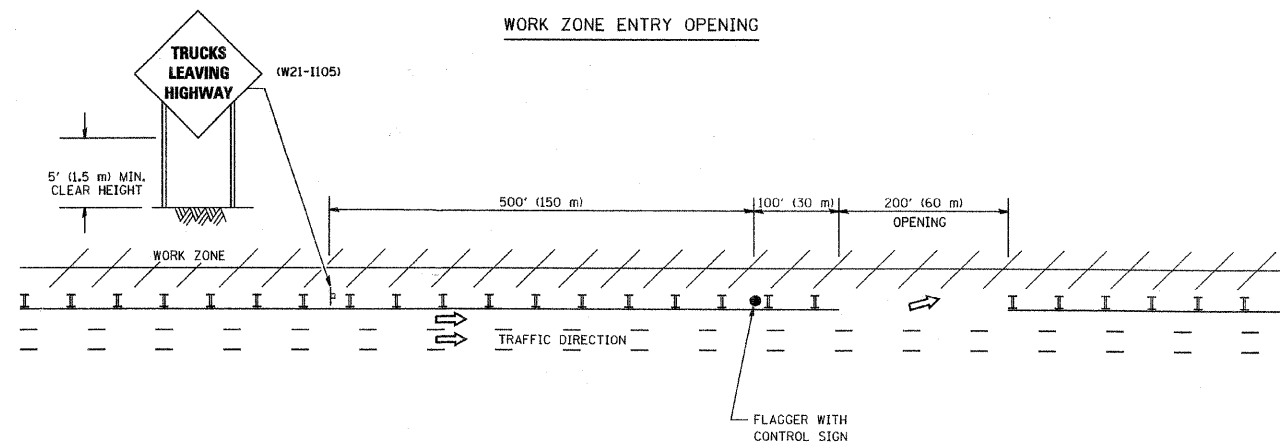
SIGNING FOR FLAGGING OPERATIONS AT WORK ZONE OPENINGS

FAU RTE	SECTION	COUNTY	TOTAL SHEETS	SHEET NO.
2803	07-00202-00-RS	COOK	12	9
F. HW. A. REG.	ILLINOIS PROJECT	M-8003(915)	CONTRACT NO. 63014	

WORK ZONE EXIT OPENING



WORK ZONE ENTRY OPENING



NOTES:

1. The Arrowboard, the Flagger Ahead trailer mounted sign, and the Trucks Leaving Highway sign shall be removed or turned away from traffic and the exit and entry openings shall be closed when the flagging operation ceases.
2. Work Zone Exit Openings should be a minimum of one half mile apart.
3. Exiting the work zone at any place other than at a Work Zone Exit Opening will be prohibited.
4. All vehicles shall enter the work zone at entry openings, using their turn signals to warn motorists

ALL DIMENSIONS ARE IN INCHES (MILLIMETERS) UNLESS OTHERWISE SHOWN

REVISIONS	
NAME	DATE
DWS	8/98
JAF	4/03
JAF	2/06
SPB	1/07

ILLINOIS DEPARTMENT OF TRANSPORTATION  
SIGNING FOR FLAGGING OPERATIONS AT WORK ZONE OPENINGS

SCALE: NONE  
DATE: 1/4/2007

DRAWN BY CADD  
CHECKED BY TC-18

REVISION DATE: 01/01/07

PLOT DATE: 1/4/2007  
FILE NAME: c:\projects\110000\110000.dwg  
PLOT SCALE: 1/8"=1'-0"  
USER NAME: thamer

**Frank Novotny & Associates, Inc.**  
Civil Engineers / Municipal Consultants  
825 Midway Drive • Willowbrook, IL • 60527 • Telephone: (630) 887-8640 • Fax: (630) 887-0132  
Illinois Professional Design Firm No. 184-000928

PROJECT: TOWN OF CICERO, ILLINOIS  
LARAMIE AVENUE LAPP RESURFACING  
PERSHING ROAD to 35th STREET  
MFT SECTION NO. 07-00202-00-RS

REVISIONS			
NO.	BY	DATE	DESCRIPTION

SIGNING FOR FLAGGING OPERATIONS AT WORK ZONE OPENINGS

PROJECT NO. 05047	SCALE NONE	SHEET 9
DRAWN/DESIGNED JFP/AMS	DATE OCT., 2007	OF 12
CHECKED/APPROVED TPG	FIELD BOOK NO. FILE	SHEETS