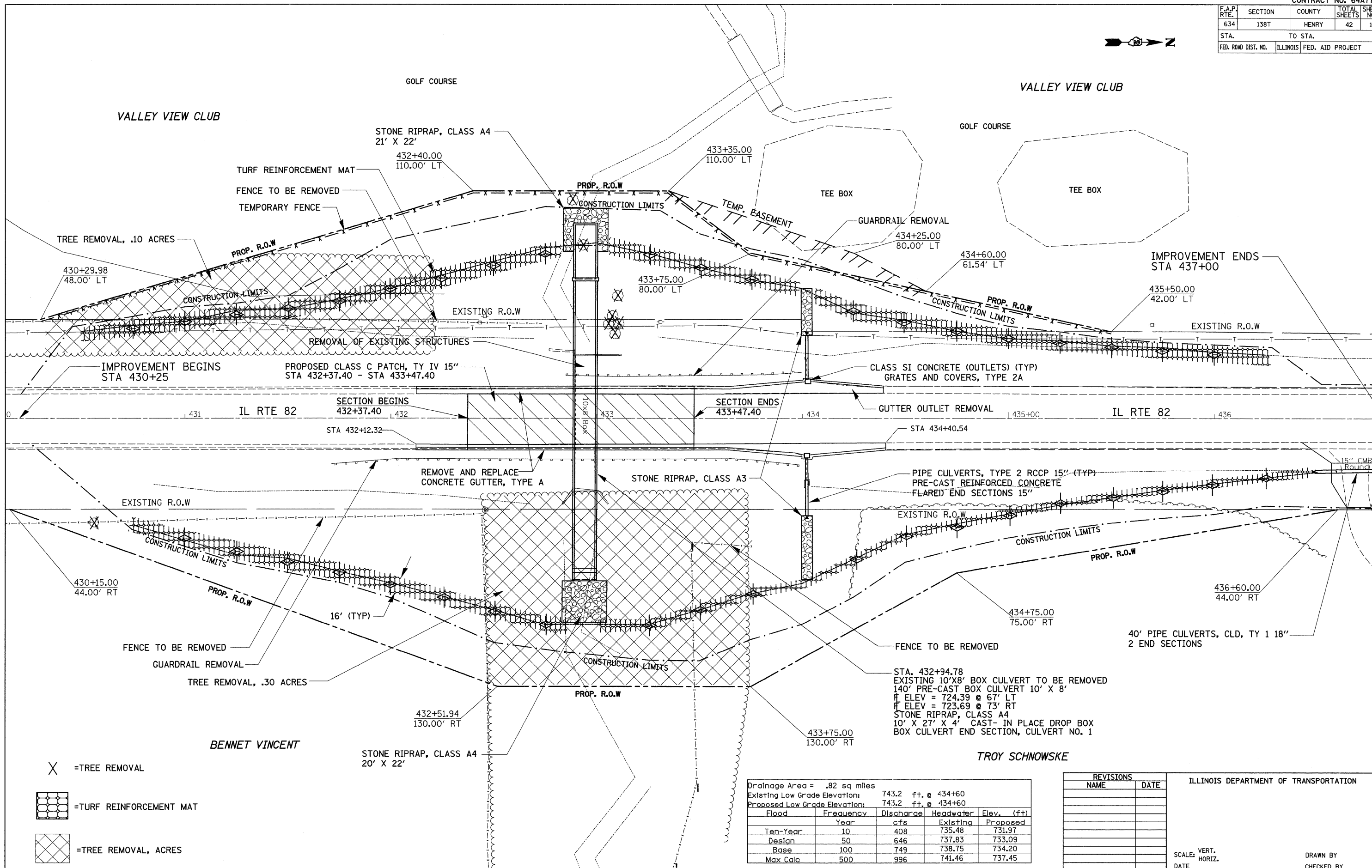


F.A.P. RTE.	SECTION	COUNTY	TOTAL SHEETS	SHEET NO.
634	138T	HENRY	42	12
STA.		TO STA.		
FED. ROAD DIST. NO.		ILLINOIS FED. AID PROJECT		



VALLEY VIEW CLUB

VALLEY VIEW CLUB

BENNET VINCENT

TROY SCHNOWSKE

- = TREE REMOVAL
- = TURF REINFORCEMENT MAT
- = TREE REMOVAL, ACRES

Drainage Area = .82 sq miles				
Existing Low Grade Elevation:		743.2 ft. @ 434+60		
Proposed Low Grade Elevation:		743.2 ft. @ 434+60		
Flood Year	Frequency	Discharge cfs	Headwater Existing	Elev. (ft) Proposed
Ten-Year	10	408	735.48	731.97
Design	50	646	737.83	733.09
Base	100	749	738.75	734.20
Max Calc	500	996	741.46	737.45

REVISIONS	
NAME	DATE

ILLINOIS DEPARTMENT OF TRANSPORTATION

SCALE: VERT. HORIZ. DATE

DRAWN BY CHECKED BY

PLOT DATE = Wed Jan 23 09:56:44 2008
 FILE NAME = c:\arc\projects\6283795\ds3795p1.dgn
 USER NAME = gantpm

IL 82 BOX CULVERT