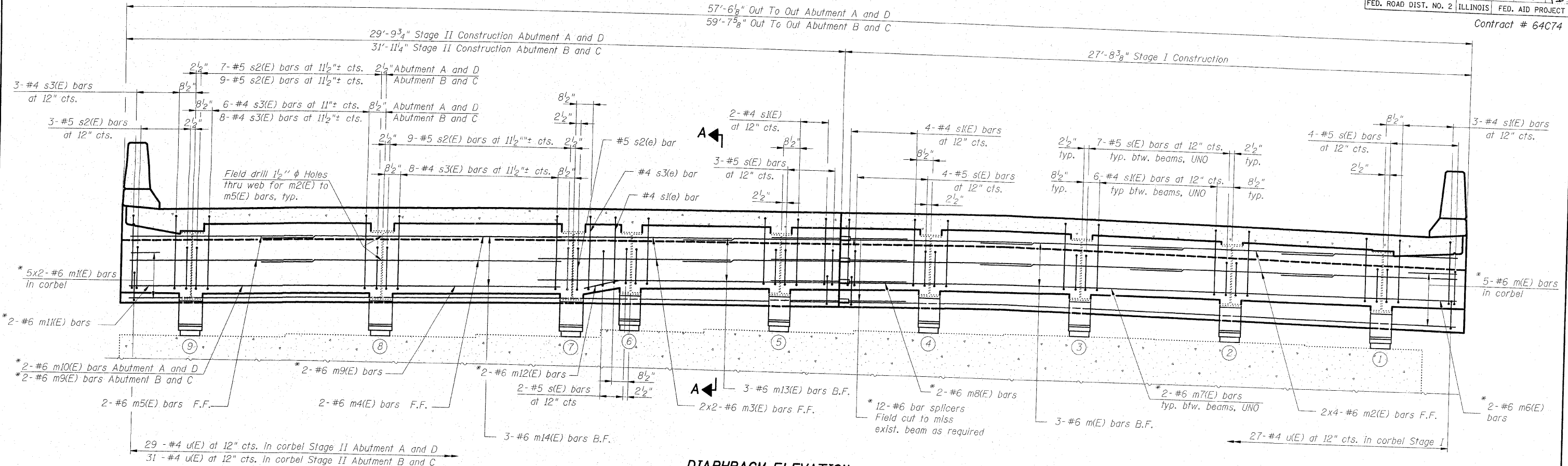


STATE OF ILLINOIS
DEPARTMENT OF TRANSPORTATION

Sheet S12 of S25

F.A.I. RTE.	SECTION	COUNTY	TOTAL SHEETS	SHEET NO.
80	81-IHBY-D	ROCK ISLAND	120	41
FED. ROAD DIST. NO. 2 ILLINOIS			FED. AID PROJECT	

Contract # 64C74



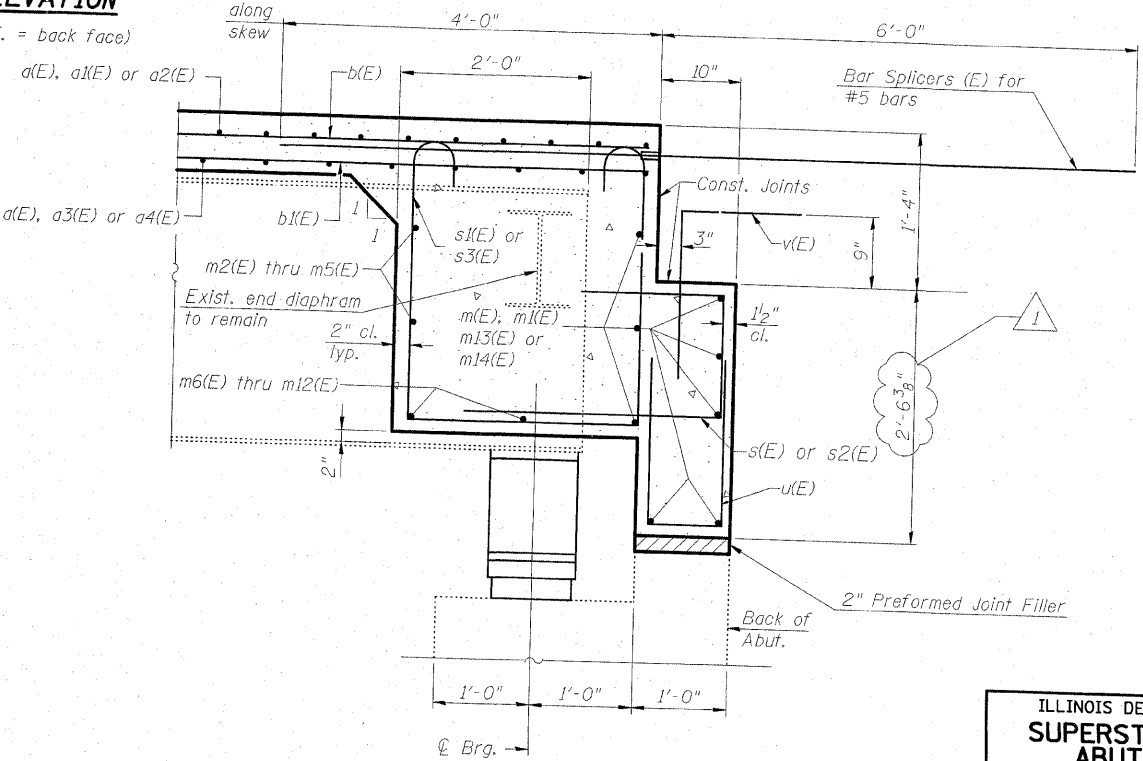
* See Section A-A for placement.

Notes:
 Reinforcement bars in diaphragm are billed with superstructure on sheet S14 of S25.
 Concrete in diaphragm is included with Concrete Superstructure on sheet S14 of S25.
 For details of bars s(E) thru s3(E) see sheet S14 of S25.
 The s(E) to s3(E) and u(E) bars shall be placed parallel to the beams. Spacing for these bars shall be at right angles to the beams.

MIN. BAR LAP
 #6 bar = 2'-9"

DIAPHRAGM ELEVATION

(F.F. = front face. B.F. = back face)



SECTION A-A

Dimensions at right angles to abutment, except as shown.

Revised, April 8, 2008.

PATRICK
 ENGINEERING INC.
 LISLE, ILLINOIS

ILLINOIS DEPARTMENT OF TRANSPORTATION
SUPERSTRUCTURE DETAILS I
ABUTMENT DIAPHRAGM
 INTERSTATE 80 OVER INTERSTATE 88
 F.A.I. ROUTE 80 - SECTION 81-IHBY-D
 ROCK ISLAND COUNTY
 STATION 217+81.50
 EB S.N. 081-0012 & WB 081-0013
 DATE: FEBRUARY 27, 2008
 DRAWN BY: A. Durbak
 CHECKED BY: R. Kaye