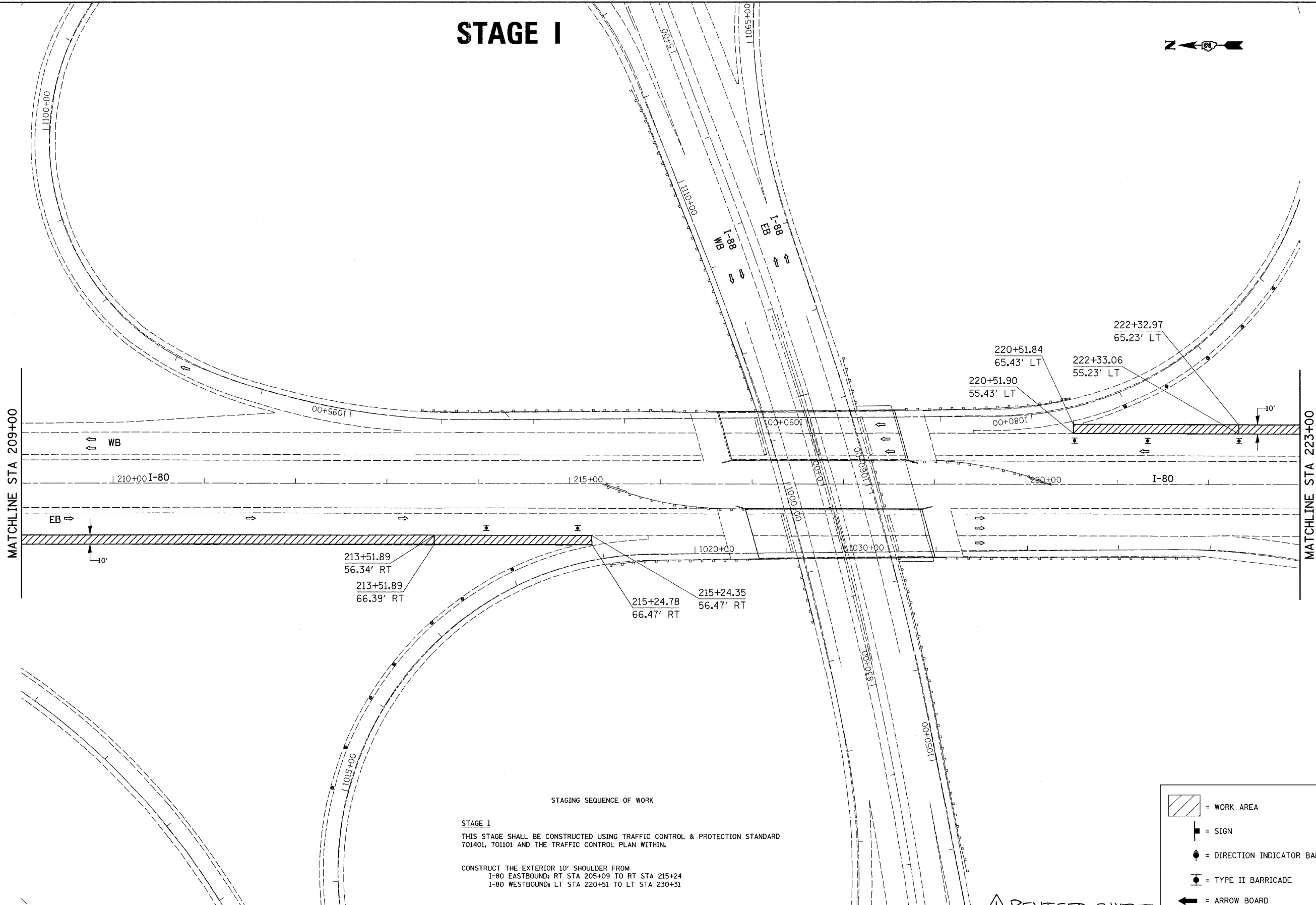
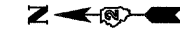


STAGE I



STAGING SEQUENCE OF WORK

STAGE I
 THIS STAGE SHALL BE CONSTRUCTED USING TRAFFIC CONTROL & PROTECTION STANDARD 701401, 701101 AND THE TRAFFIC CONTROL PLAN WITHIN.

CONSTRUCT THE EXTERIOR 10' SHOULDER FROM
 I-80 EASTBOUND: RT STA 205+09 TO RT STA 215+24
 I-80 WESTBOUND: LT STA 220+51 TO LT STA 230+31

REVISSED SHEET 4/8/08

FILE NAME = C:\Projeots\p200407\d00407stg.dgn	USER NAME = jordanhd	DESIGNED -	REVISED -
		DRAWN -	REVISED -
		CHECKED -	REVISED -
		DATE -	REVISED -

**STATE OF ILLINOIS
 DEPARTMENT OF TRANSPORTATION**

I-80 STAGE I			
SCALE:	SHEET NO.	OF SHEETS	STA. TO STA.

F.A.I. RTE. 80	SECTION 81-IHBY-D	COUNTY ROCK ISLAND	TOTAL SHEETS 120	SHEET NO. 57
FED. ROAD DIST. NO.		ILLINOIS FED. AID PROJECT CONTRACT NO. 64C74		