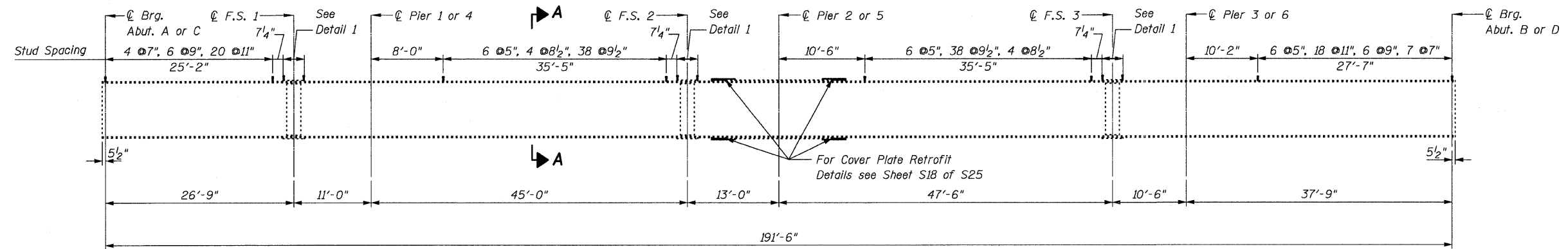


STATE OF ILLINOIS  
DEPARTMENT OF TRANSPORTATION

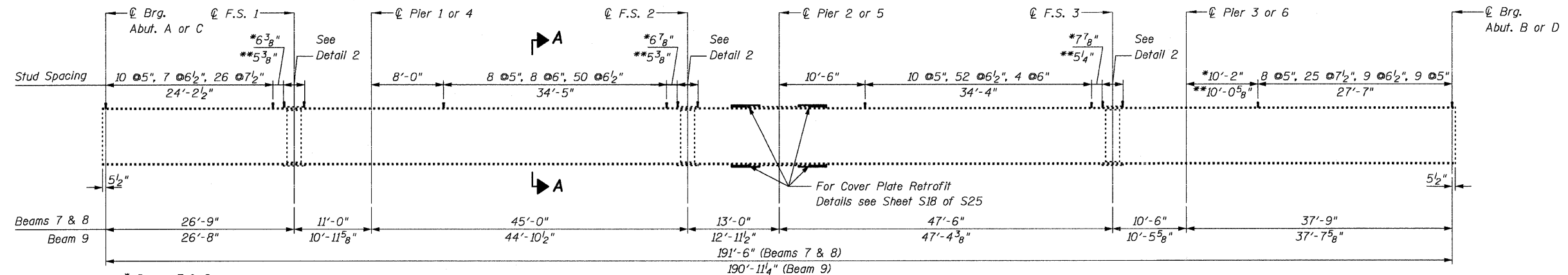
Sheet S17 of S25

F.A.I. RTE.	SECTION	COUNTY	TOTAL SHEETS	SHEET NO.
80	81-IHBY-D	ROCK ISLAND	120	46
FED. ROAD DIST. NO. 2		ILLINOIS	FED. AID PROJECT	

Contract # 64C74

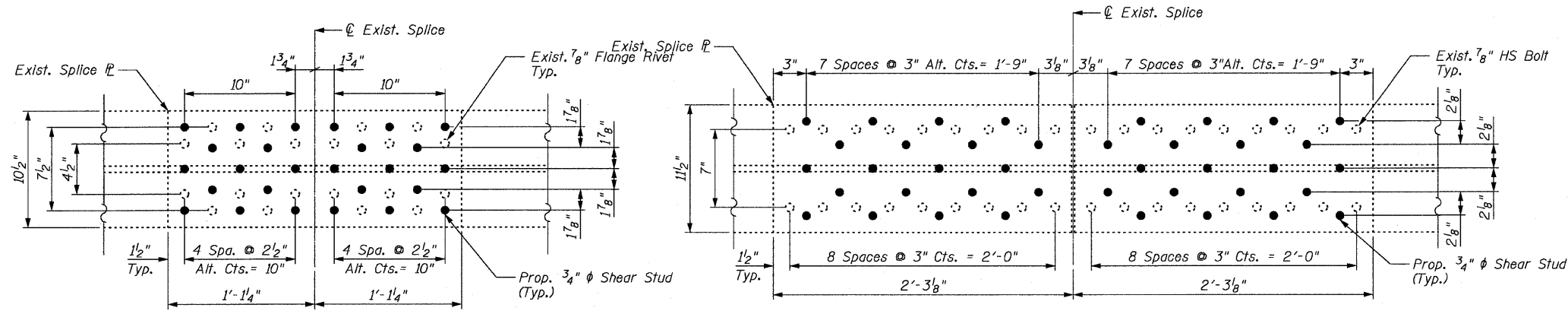


ELEVATION FOR BEAMS 1 TO 6



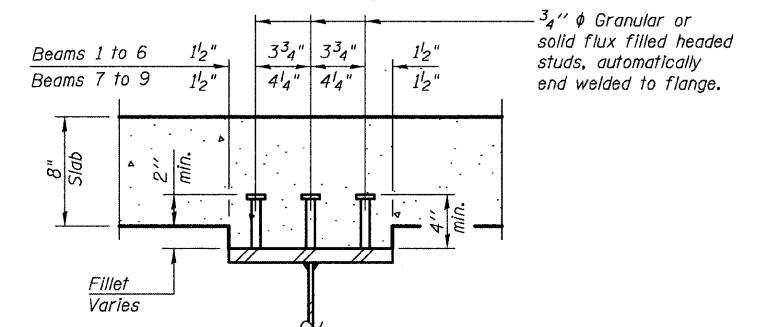
ELEVATION FOR BEAMS 7 TO 9

\* Beams 7 & 8  
\*\* Beam 9



DETAIL 1

DETAIL 2



SECTION A-A

BILL OF MATERIAL

Item	Unit	Total
Stud Shear Connectors	Each	11,808

ILLINOIS DEPARTMENT OF TRANSPORTATION  
SHEAR CONNECTOR DETAILS

INTERSTATE 80 OVER INTERSTATE 88  
F.A.I. ROUTE 80 - SECTION 81-IHBY-D  
ROCK ISLAND COUNTY  
STATION 217+81.50  
EB S.N. 081-0012 & WB 081-0013

DATE: FEBRUARY 27, 2008  
DRAWN BY: M. Woldezion  
CHECKED BY: A. Yargicoglu