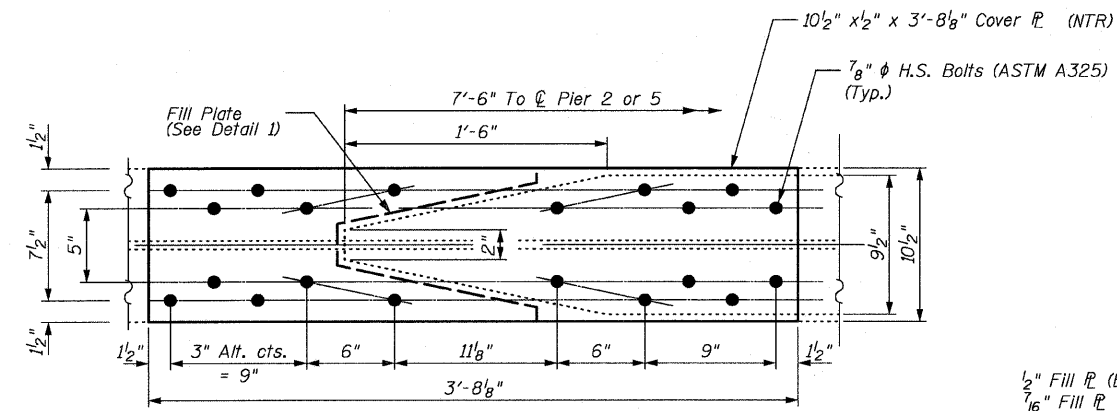


STATE OF ILLINOIS  
DEPARTMENT OF TRANSPORTATION

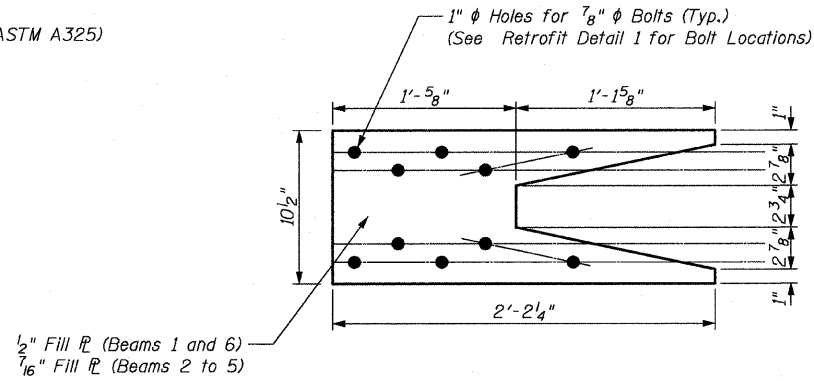
Sheet S18 of S25

F.A.I. RTE.	SECTION	COUNTY	TOTAL SHEETS	SHEET NO.
80	81-IHBY-D	ROCK ISLAND	120	47
FED. ROAD DIST. NO. 2	ILLINOIS	FED. AID PROJECT		

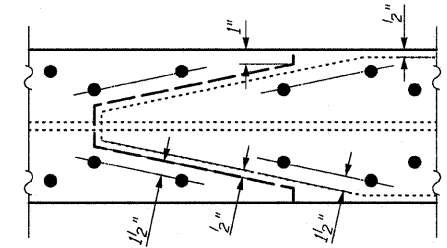
Contract # 64C74



RETROFIT DETAIL 1

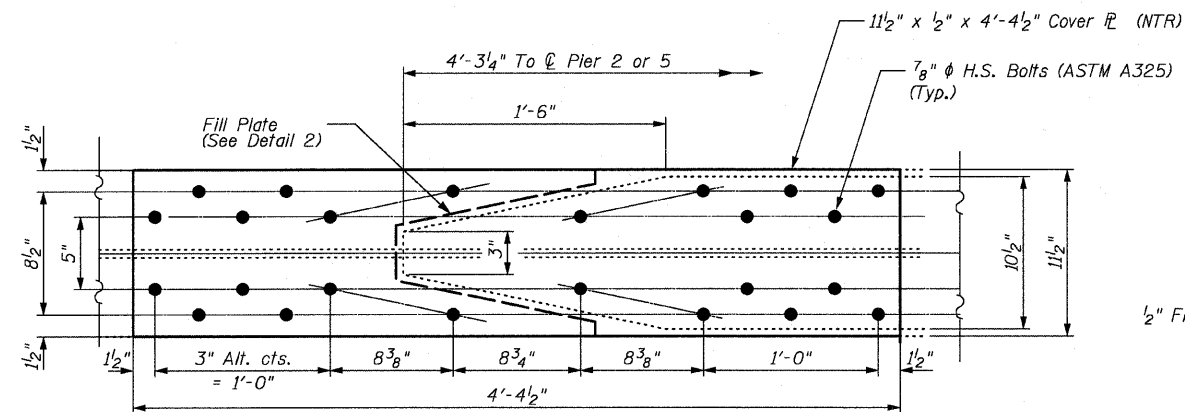


FILL PLATE DETAIL 1

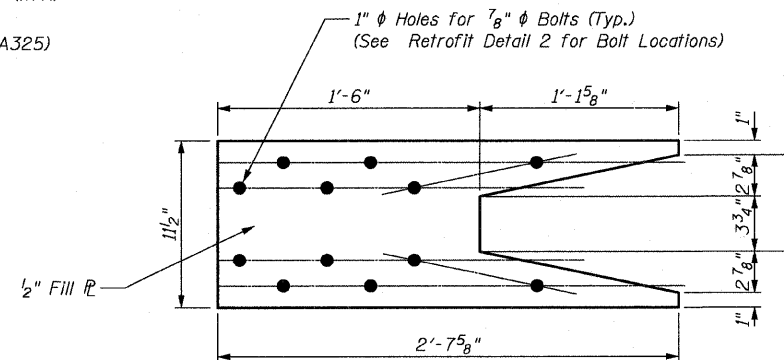


TYPICAL CLEARANCE DETAIL

RETROFIT DETAILS FOR BEAMS 1 TO 6



RETROFIT DETAIL 2



FILL PLATE DETAIL 2

RETROFIT DETAILS FOR BEAMS 7 TO 9

BILL OF MATERIAL

Item	Unit	Total
Furnishing and Erecting Structural Steel	Pound	9,910

Notes:

- Load carrying components designated "NTR" shall conform to the Supplemental Requirements for Notch Toughness, Zone 2.
- All field drilling required for cover plate retrofit shall be included in the cost of "Furnishing and Erecting Structural Steel".
- See General Notes 11, 13 and 14 on Sheet S2 of S25.

ILLINOIS DEPARTMENT OF TRANSPORTATION  
COVER PLATE RETROFIT DETAILS

INTERSTATE 80 OVER INTERSTATE 88  
F.A.I. ROUTE 80 - SECTION 81-IHBY-D  
ROCK ISLAND COUNTY  
STATION 217+81.50  
EB S.N. 081-0012 & WB 081-0013

DATE: FEBRUARY 27, 2008  
DRAWN BY: M. Woldezion  
CHECKED BY: A. Yargicoglu

FILES  
STAGES  
PLACES

**PATRICK**  
ENGINEERING INC.  
LISLE, ILLINOIS