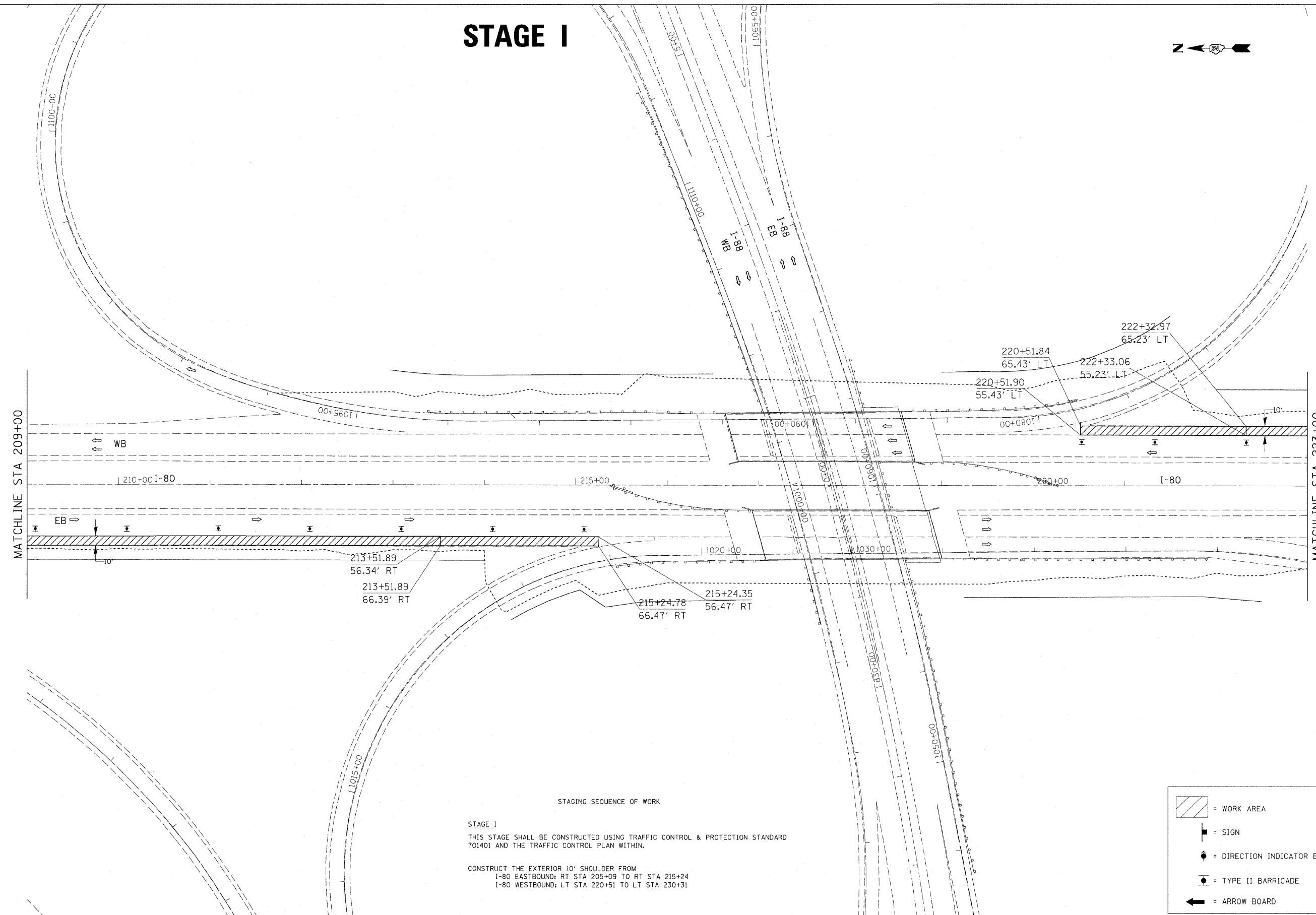
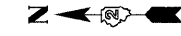


# STAGE I



STAGE I  
 THIS STAGE SHALL BE CONSTRUCTED USING TRAFFIC CONTROL & PROTECTION STANDARD 701401 AND THE TRAFFIC CONTROL PLAN WITHIN.

CONSTRUCT THE EXTERIOR 10' SHOULDER FROM  
 I-80 EASTBOUND: RT STA 205+09 TO RT STA 215+24  
 I-80 WESTBOUND: LT STA 220+51 TO LT STA 230+31

	= WORK AREA
	= SIGN
	= DIRECTION INDICATOR BARRICADE
	= TYPE II BARRICADE
	= ARROW BOARD

FILE NAME = C:\Projects\p200407\400407stg.dgn	USER NAME = jordanhd	DESIGNED - ---	REVISED - ---	<b>STATE OF ILLINOIS DEPARTMENT OF TRANSPORTATION</b>	<b>I-80 STAGE I</b>		F.A.I. RTE. 80	SECTION 81-JHBY-D	COUNTY ROCK ISLAND	TOTAL SHEETS 120	SHEET NO. 57	
PLOT SCALE = 50.0000' / IN.		CHECKED - ---	REVISED - ---		SCALE: _____	SHEET NO. _____ OF _____ SHEETS	STA. _____ TO STA. _____	FED. ROAD DIST. NO. _____ ILLINOIS FED. AID PROJECT		CONTRACT NO. 64C74		
PLOT DATE = Thu Feb 26 13:30:03 2008		DATE - ---	REVISED - ---									