

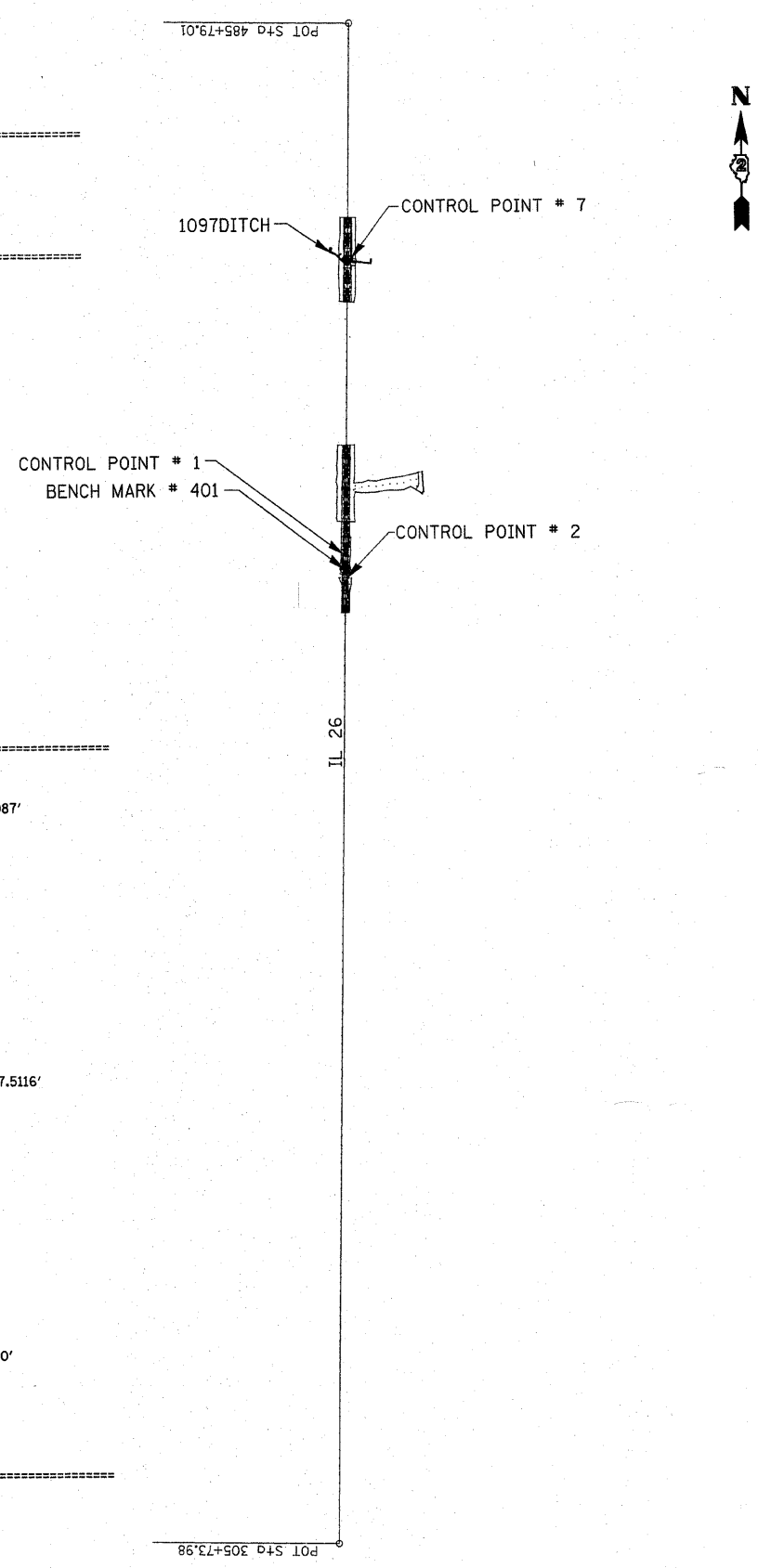
# HORIZONTAL & VERTICAL CONTROL

316	102T	LEE	41	11
STA.		TO STA.		
FED. ROAD DIST. NO.		ILLINOIS FED. AID PROJECT		

## EXISTING ALIGNMENT

Chain IL26 contains:  
29 30

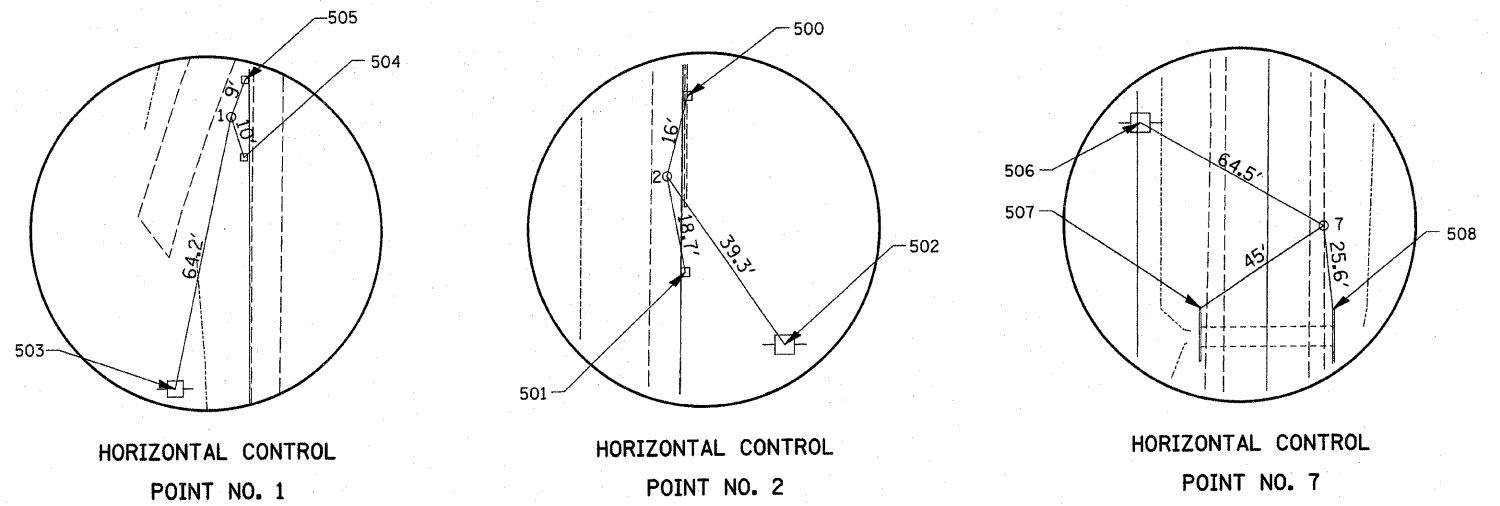
Beginning chain IL26 description  
-----  
Point 29 N 1,822,562.4040 E 2,489,810.4179 Sta 305+73.9803  
Course from 29 to 30 0° 46' 33.5369" Dist 18,005.0259'  
Point 30 N 1,840,565.7786 E 2,490,054.2606 Sta 485+79.0062  
-----  
Ending chain IL26 description



## PROPOSED ALIGNMENT

Chain 1097DITCH contains:  
50000 CUR 50200 CUR 50210 50003 50004

Beginning chain 1097DITCH description  
-----  
Point 50000 N 1,837,884.2683 E 2,489,804.9831 Sta 10+00.0000  
Course from 50000 to PC 50200 105° 42' 47.6093" Dist 10,5087'  
-----  
Curve Data  
-----  
Curve 50200  
P.I. Station 10+64.8822 N 1,837,866.6967 E 2,489,867.4406  
Delta = 30° 25' 06.5983" (RT)  
Degree = 28° 38' 52.4031"  
Tangent = 54.3735'  
Length = 106.1806'  
Radius = 200.0000'  
External = 7.2594'  
Long Chord = 104.9380'  
Mid. Ord. = 7.0052'  
P.C. Station 10+10.5087 N 1,837,881.4223 E 2,489,815.0991  
P.T. Station 11+16.6893 N 1,837,827.4970 E 2,489,905.1216  
C.C. N 1,837,688.8965 E 2,489,760.9346  
-----  
Course from PT 50200 to PC 50210 136° 07' 54.2075" Dist 57.5116'  
-----  
Curve Data  
-----  
Curve 50210  
P.I. Station 11+95.0937 N 1,837,770.9725 E 2,489,959.4560  
Delta = 45° 21' 20.6705" (LT)  
Degree = 114° 35' 29.6125"  
Tangent = 20.8928'  
Length = 39.5804'  
Radius = 50.0000'  
External = 4.1896'  
Long Chord = 38.5550'  
Mid. Ord. = 3.8656'  
P.C. Station 11+74.2009 N 1,837,786.0349 E 2,489,944.9773  
P.T. Station 12+13.7813 N 1,837,770.6896 E 2,489,980.3469  
C.C. N 1,837,820.6850 E 2,489,981.0240  
-----  
Course from PT 50210 to 50003 90° 46' 33.5370" Dist 91.1780'  
Point 50003 N 1,837,769.4548 E 2,490,071.5165 Sta 13+04.9593  
Course from 50003 to 50004 96° 09' 01.0441" Dist 222.8504'  
Point 50004 N 1,837,745.5793 E 2,490,293.0842 Sta 15+27.8096  
-----  
Ending chain 1097DITCH description



HORIZONTAL CONTROL POINTS							
POINT	NORTH	EAST	ELEVATION	CHAIN	STATION	OFFSET	DESCRIPTION
1	1834239.7680	2489943.3480	699.0020	IL26	422+52.0736	25.229' LT	GPS CONTROL POINT, PIN
2	1834076.1110	2489982.8490	700.0380	IL26	420+88.9666	16.4847' RT	GPS CONTROL POINT, PK NAIL
7	1837803.7094	2490033.9940	707.6243	IL26	458+16.9158	17.1421' RT	PK NAIL

SURVEY WORK POINTS							
POINT	NORTH	EAST	ELEVATION	CHAIN	STATION	OFFSET	DESCRIPTION
100	1822775.1316	2489747.2439	697.3003	IL26	307+85.8328	66.0492' LT	POT

BENCH MARKS							
POINT	NORTH	EAST	ELEVATION	CHAIN	STATION	OFFSET	DESCRIPTION
401	1834143.5560	2489944.4420	699.4200	IL26	421+55.8853	22.8321' LT	HEADWALL, CHISELED SQUARE

REFERENCE TIES				
POINT	CHAIN	STATION	OFFSET	DESCRIPTION
500	IL26	421+04.5266	20.3664' RT	GUARDPOST, SHINER
501	IL26	420+70.6101	20.1927' RT	GUARDPOST, SHINER
502	IL26	420+57.0210	39.4015' RT	POWER POLE, SHINER
503	IL26	421+89.0838	37.8601' LT	POWER POLE, SHINER
504	IL26	422+42.6751	22.1765' LT	GUARDPOST, SHINER
505	IL26	422+60.6908	22.0245' LT	GUARDPOST, SHINER
506	IL26	458+48.2206	39.2441' LT	POWER POLE
507	IL26	457+91.65554	20.2693' LT	HEADWALL
508	IL26	457+91.4847	20.1437' RT	HEADWALL

CURVE POINT NUMBERS					
CHAIN	CURVE	PI	CC	PC	PT
1097DITCH	50200	50200	50201	50202	50203
1097DITCH	50210	50210	50211	50212	50213

REVISIONS		ILLINOIS DEPARTMENT OF TRANSPORTATION
NAME	DATE	
		SCALE: VERT. HORIZ. DATE

DRAWN BY  
CHECKED BY

PLOT DATE = Thu Jan 24 15:26:46 2008  
 FILE NAME = C:\Projects\20080124\1097DITCH.dgn  
 PLOT SCALE = 2000.0000 / IN.  
 USER NAME = hmanotte

## HORIZONTAL & VERTICAL CONTROL