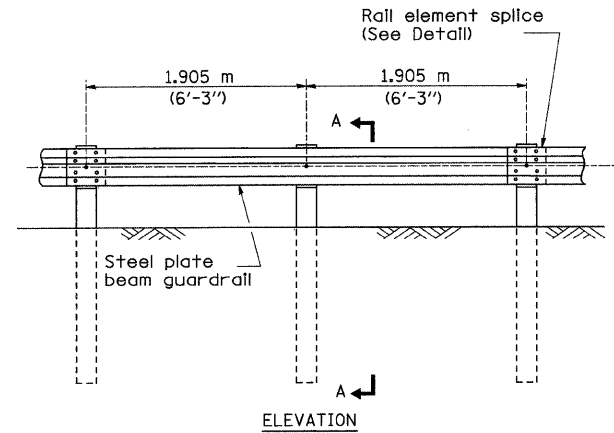
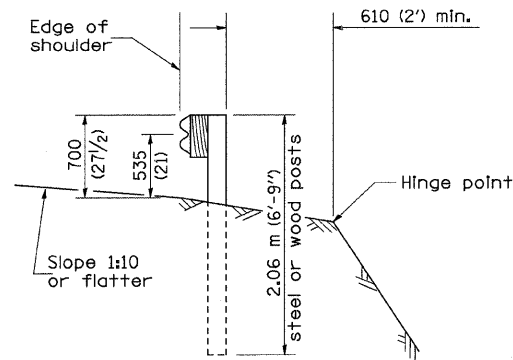


# REMOVE AND REERECT STEEL PLATE BEAM GUARDRAIL

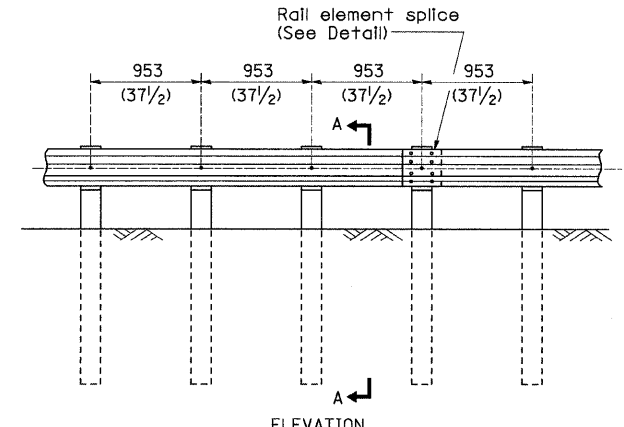


**TYPE A**

1.905 m (6'-3") Typical post spacing

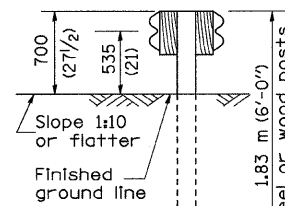


**SECTION A-A**

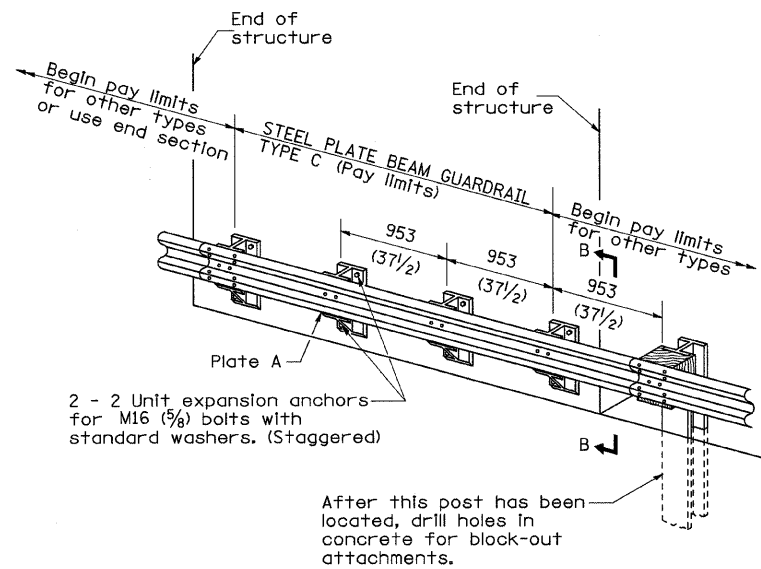


**TYPE B**

953 (37 1/2) Closed post spacing

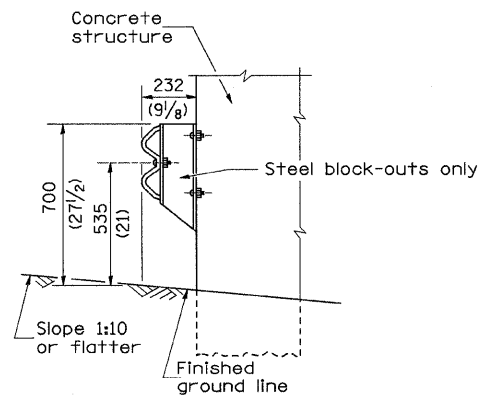


**SECTION C-C**

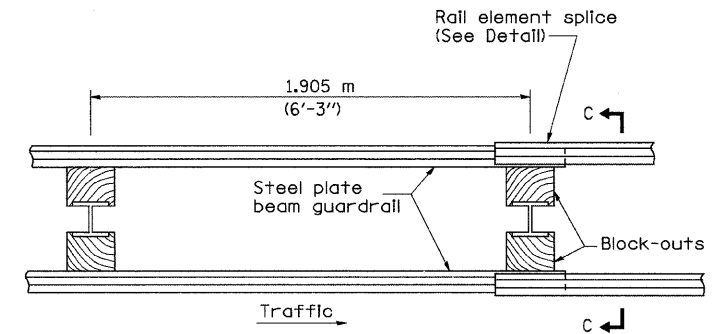


**TYPE C**

953 (37 1/2) Block-out spacing



**SECTION B-B**



**PLAN**

**TYPE D**

Double steel plate beam guardrail  
1.905 m (6'-3") typical post spacing

## GENERAL NOTES

All slope ratios are expressed as units of vertical displacement to units of horizontal displacement (V:H).

All dimensions are in millimeters (Inches) unless otherwise shown.

The existing steel posts may be drilled to match the bolt pattern shown herein for the wood block-out, or a new steel post shall be provided.

This detail is applicable to the guardrail system used prior to January 1, 2007. For details on the Midwest Guardrail System, see Standard 630001.

FILE NAME = C:\Projects\p200607\d00607spl.dgn	USER NAME = hensonke	DESIGNED -	REVISED - 1-15-08	<b>STATE OF ILLINOIS DEPARTMENT OF TRANSPORTATION</b>	<b>REGION 2 / DISTRICT 2 STANDARD</b>				F.A.P. RTE. 316	SECTION 102T	COUNTY LEE	TOTAL SHEETS 40	SHEET NO. 27			
PLOT SCALE = 50.0000' / IN.	CHECKED -	REVISOR -	SCALE:						SHEET NO.	OF	SHEETS	STA.	TO STA.	CONTRACT NO. 64C75		
PLOT DATE = Thu Jan 24 15:44:34 2008	DATE -	REVISOR -	FED. ROAD DIST. NO.						ILLINOIS FED. AID PROJECT							