

F.A.P. RTE.	SECTION	COUNTY	TOTAL SHEETS	SHEET NO.
17	(4BR-2)D & (4BR-1)D	CARROLL	27	1
FED. ROAD DIST. NO.	ILLINOIS	CONTRACT NO. 64D28		

INDEX OF SHEETS AND STANDARDS

Page	Description
1	COVER SHEET
2	SUMMARY OF QUANTITIES
3	GENERAL NOTES
4 - 5	TYPICAL SECTIONS
6	SCHEDULE OF QUANTITIES
7 - 8	HORIZONTAL & VERTICAL CONTROL
9 - 10	PLAN & PROFILE
11 - 20	STRUCTURE PLANS
21 - 23	STAGING DETAILS
DISTRICT STANDARDS	
24	LETTERING FOR NAME PLATE (89.4)
	STOP LINE SIGN FOR TEMPORARY SIGNALS (99.4)
	INFORMATIONAL WARNING SIGN (FOR NARROW TRAVEL LANES) (39.2)
25	WITNESS MARKER & PERMANENT SURVEY MARKERS, TYPE II (66.2)
	ENTRANCE SIGN FOR USE WITH TEMPORARY SIGNALS (75.2)
26 - 27	TYPICAL PAVEMENT MARKINGS (41.1)

STATE OF ILLINOIS
DEPARTMENT OF TRANSPORTATION
DIVISION OF HIGHWAYS
PROPOSED
HIGHWAY PLANS
FAP ROUTE 17 (US 52/L 64)
SECTION (4BR-2)D & (4BR-1)D
CARROLL COUNTY

C-92-043-08



STATE STANDARDS

001001-01	AREAS OF REINFORCEMENT BARS
001006	DECIMAL OF AN INCH AND A FOOT
515001-02	NAME PLATE FOR BRIDGES
631031-06	TRAFFIC BARRIER TERMINAL, TYPE 6
635006-02	REFLECTOR AND TERMINAL MARKER PLACEMENT
635011-01	REFLECTOR MARKER AND MOUNTING DETAILS
667101	PERMANENT SURVEY MARKERS
701006-02	TYPICAL APPLICATION OF TRAFFIC CONTROL STANDARD
701311-02	TYPICAL APPLICATION OF TRAFFIC CONTROL STANDARD
701321-09	TYPICAL APPLICATION OF TRAFFIC CONTROL STANDARD
701901	TRAFFIC CONTROL DEVICES
704001-04	TEMPORARY CONCRETE BARRIER
720011	METAL POST FOR SIGNS, MARKERS AND DELINEATORS
728001	TELESCOPING STEEL SIGN SUPPORT
729001	APPLICATIONS OF TYPES A & B METAL POSTS (FOR SIGNS AND MARKERS)
886001	DETECTOR LOOP INSTALLATIONS
886006	TYPICAL LAYOUT FOR DETECTION LOOPS

SECTION (4BR-1)D
INCLUDES THE REMOVAL AND
REPLACEMENT OF FOUR BEAMS
ON THE EXISTING STRUCTURE
SN 008-0029

SECTION BEGINS
STA 673+68.48

IMPROVEMENT BEGINS
STA 673+23.84

IMPROVEMENT/SECTION ENDS
STA 674+77.98

SECTION (4BR-2)D
INCLUDES THE REMOVAL AND
REPLACEMENT OF FOUR BEAMS
ON THE EXISTING STRUCTURE
SN 008-0030

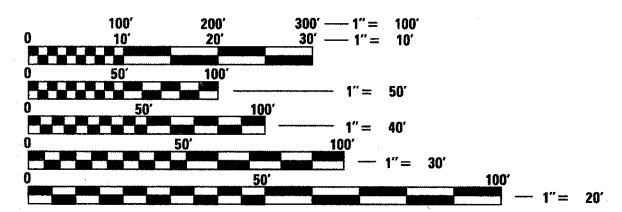
SECTION ENDS
STA 744+59.40

IMPROVEMENT ENDS
STA 744+94.38

SECTION BEGINS
STA 743+47.07

IMPROVEMENT BEGINS
STA 743+13.45

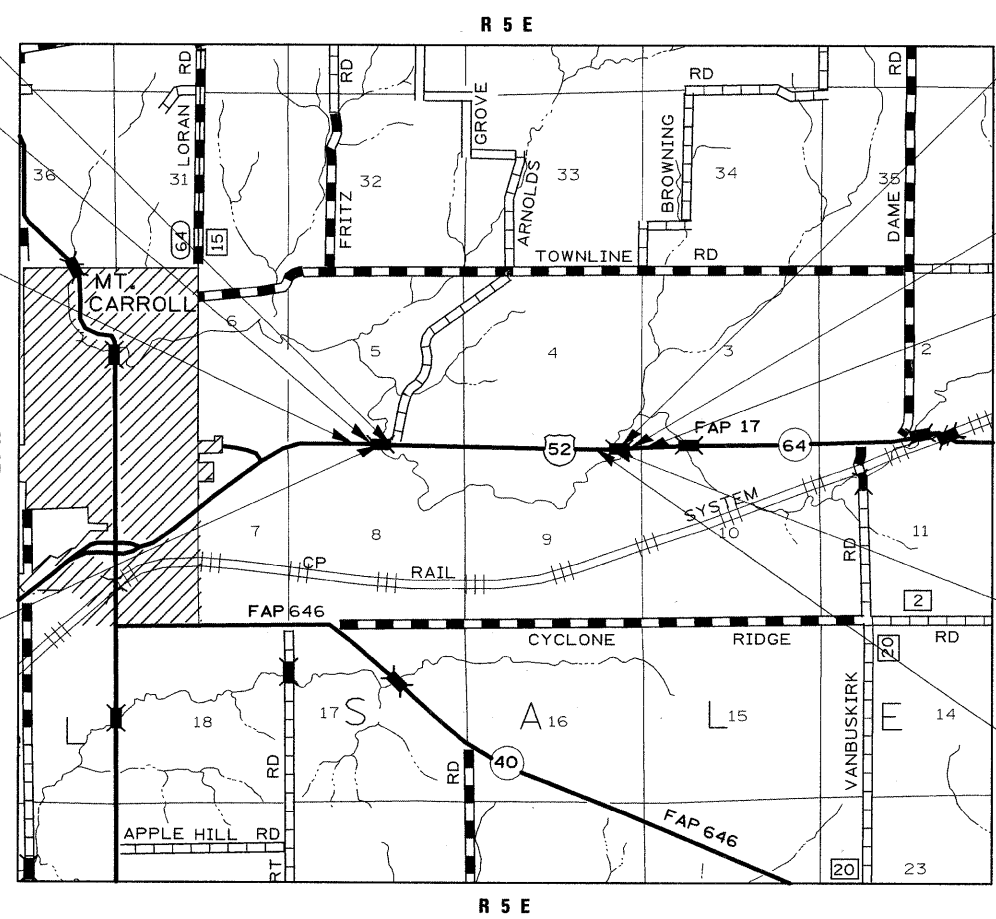
SALEM TOWNSHIP SECTION 4, 5, 8, 9



FULL SIZE PLANS HAVE BEEN PREPARED USING STANDARD ENGINEERING SCALES. REDUCED SIZED PLANS WILL NOT CONFORM TO STANDARD SCALES. IN MAKING MEASUREMENTS ON REDUCED PLANS, THE ABOVE SCALES MAY BE USED.

J.U.L.I.E.
JOINT UTILITY LOCATION INFORMATION FOR EXCAVATION
1-800-892-0123
OR 811

PROJECT ENGINEER: REBECCA MARRUFFO
SQUAD LEADER: FAITH DUNCAN
(815) 284-5364
CONTRACT NO. 64D28



GROSS LENGTH OF PROJECT = 7090.92 LIN FT = 1.34 MI
NET LENGTH OF PROJECT = 221.83 LIN FT = 0.04 MI

STATE OF ILLINOIS
DEPARTMENT OF TRANSPORTATION
DIVISION OF HIGHWAYS

SUBMITTED 1-25 2008
George F. Ryan
 DEPUTY DIRECTOR OF HIGHWAYS, REGION ENGINEER

March 21, 2008
Eric E. Horn
 ENGINEER OF DESIGN AND ENVIRONMENT

March 21, 2008
Christine M. Reed
 DIRECTOR OF HIGHWAYS, CHIEF ENGINEER

PRINTED BY THE AUTHORITY
OF THE STATE OF ILLINOIS