

F.A.U. RTE.	SECTION	COUNTY	TOTAL SHEETS	SHEET NO.
2503	(35)BR-2	KENDALL	129	1

D-93-060-03  
P-93-038-02

STATE OF ILLINOIS  
DEPARTMENT OF TRANSPORTATION  
DIVISION OF HIGHWAYS

# PROPOSED HIGHWAY PLANS

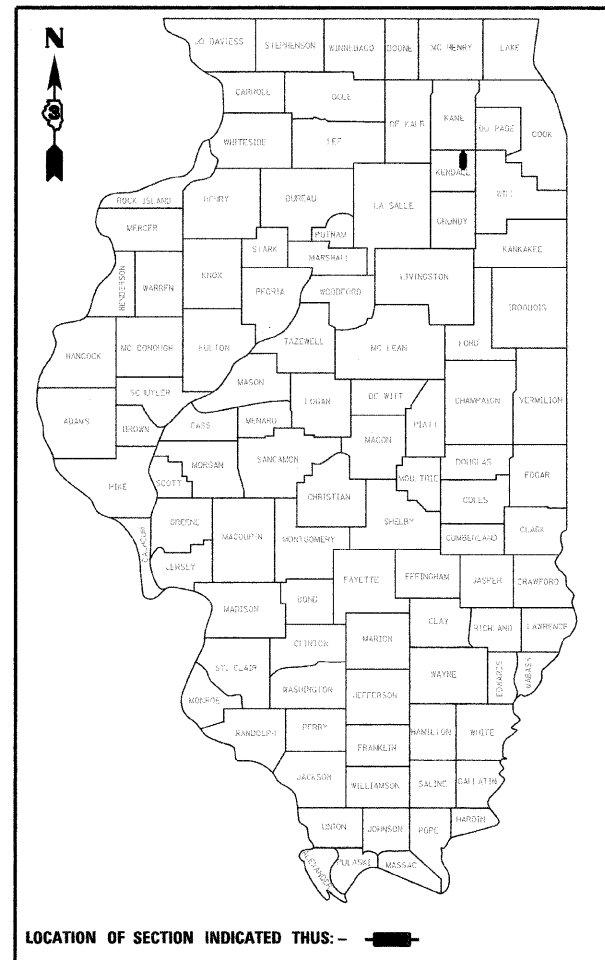
FAU 2503 (IL 25)  
SECTION (35)BR-2  
PROJECT BRM-2503(017)  
KENDALL COUNTY

REPLACEMENT OF THE BRIDGE CARRYING ILLINOIS 25 OVER  
THE WAUBONSEE CREEK IN OSWEGO

C-93-171-03

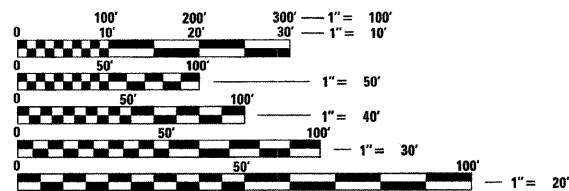
INDEX OF SHEETS

- 1 COVER SHEET
- 2 GENERAL NOTES AND COMMITMENTS
- 3-4 SUMMARY OF QUANTITIES
- 5 TYPICAL CROSS SECTIONS
- 6-9 SCHEDULE OF QUANTITIES
- 10 HORIZONTAL ALIGNMENT, TIES & BENCHMARKS
- 11-14 PLAN AND PROFILE SHEETS
- 15 STORM SEWER PLAN AND PROFILE SHEET
- 16 RIGHT OF WAY SHEET
- 17 PAVEMENT MARKING SHEET
- 18-19 MISCELLANEOUS DETAILS
- 20-23 STAGING PLANS
- 24 EROSION CONTROL PLAN AND NOTES
- 25-49 STRUCTURE PLANS
- 50-58 EXISTING BRIDGE PLANS
- 59-61 EXISTING AS BUILT PLANS
- 62-78 CROSS SECTIONS PRESTAGE 1
- 79-95 CROSS SECTIONS STAGE 1
- 96-112 CROSS SECTIONS STAGE 2
- 113-129 CROSS SECTIONS STAGE 3



FOR LIST OF HIGHWAY STANDARDS, SEE SHEET 2

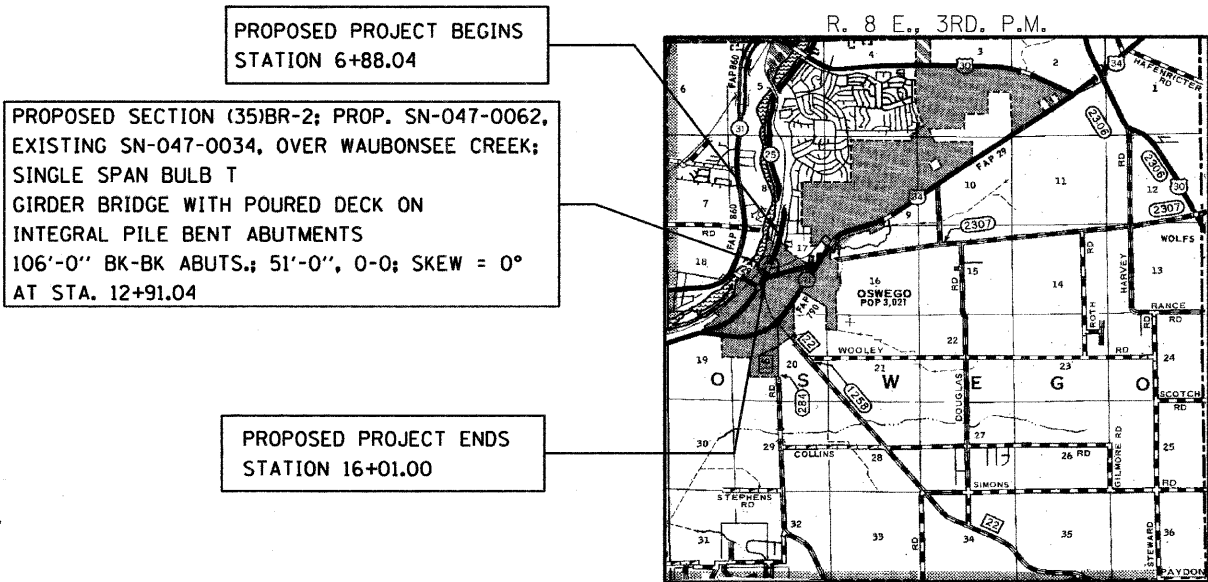
DESIGN DESIGNATION  
MINOR URBAN ATERIAL  
2005 ADT = 7400  
PC=87.2% SU=8.9% MU=3.9%  
POSTED SPEED 30MPH



FULL SIZE PLANS HAVE BEEN PREPARED USING STANDARD  
ENGINEERING SCALES. REDUCED SIZED PLANS WILL NOT  
CONFORM TO STANDARD SCALES. IN MAKING MEASUREMENTS  
ON REDUCED PLANS, THE ABOVE SCALES MAY BE USED.

MICROFILMED \_\_\_\_\_  
REEL NUMBER \_\_\_\_\_  
AWARDED \_\_\_\_\_  
RESIDENT ENGINEER \_\_\_\_\_  
AS BUILT CHANGES WERE MADE  
ON THE FOLLOWING SHEETS \_\_\_\_\_

J.U.L.I.E.  
JOINT UTILITY LOCATION INFORMATION FOR EXCAVATION  
1-800-892-0123  
DISTRICT 3 NO. (815) 434-6131  
PROJECT ENGINEER: DAVE BROVIAK  
UNIT CHIEF: BRAD DUNCAN  
TOWNSHIP: OSWEGO



PROPOSED PROJECT BEGINS  
STATION 6+88.04

PROPOSED SECTION (35)BR-2; PROP. SN-047-0062,  
EXISTING SN-047-0034, OVER WAUBONSEE CREEK;  
SINGLE SPAN BULB T  
GIRDER BRIDGE WITH POURED DECK ON  
INTEGRAL PILE BENT ABUTMENTS  
106'-0" BK-BK ABUTS.; 51'-0", 0-0; SKEW = 0°  
AT STA. 12+91.04

PROPOSED PROJECT ENDS  
STATION 16+01.00

LAYOUT

NOT TO SCALE

NET LENGTH = 806.96FT. = 0.153 MI.  
GROSS LENGTH = 912.96FT. = 0.173 MI.

STATE OF ILLINOIS  
DEPARTMENT OF TRANSPORTATION  
DIVISION OF HIGHWAYS

SUBMITTED 02/05/08 2008

*George F. Brown*  
DEPUTY DIRECTOR OF HIGHWAYS, REGION 2 ENGINEER

March 21, 2008  
*Eric E. Karam*  
ENGINEER OF DESIGN AND ENVIRONMENT

March 21, 2008  
*Christine M. Reed*  
DIRECTOR OF HIGHWAYS, CHIEF ENGINEER

PRINTED BY THE AUTHORITY  
OF THE STATE OF ILLINOIS

DATE: 1/31/2008  BY: Christopher J. McClure LICENSE EXPIRES: November 2009	LICENSE NO. 	HAMPTON, LENZINI & RENWICK, INC. CIVIL & STRUCTURAL ENGINEERS  3085 STEVENSON DRIVE, SUITE 201 SPRINGFIELD, ILLINOIS 62703 (217) 546-3400 ELGIN • SPRINGFIELD PROJECT NUMBER: 12-06-0029-1 DATE: 06/01/07
---	-----------------	--