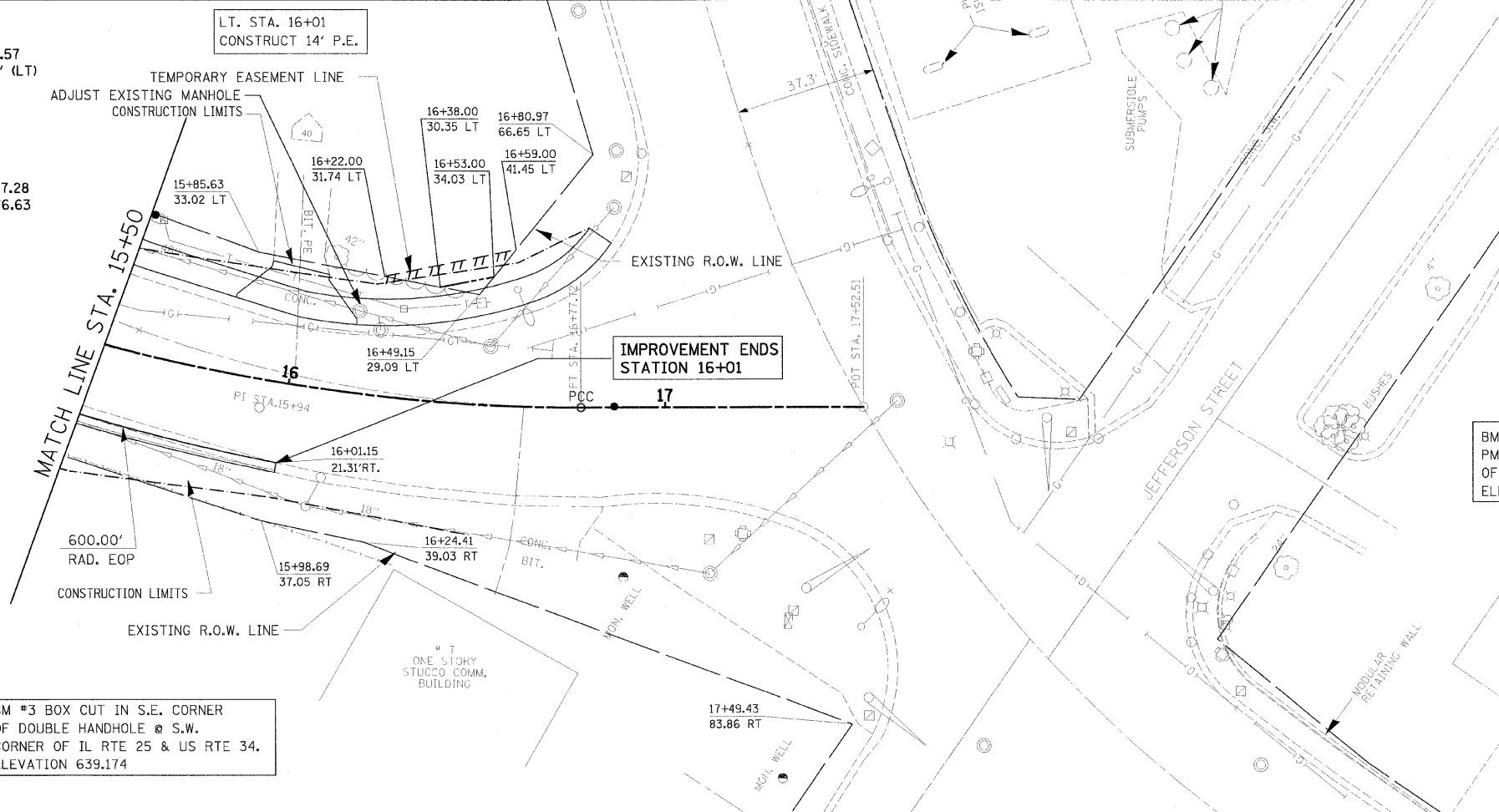


F.A.U. RTE.	SECTION	COUNTY	TOTAL SHEETS	SHEET NO.
2503	(35) BR-2	KENDALL	129	14
STA. 15+00		TO STA. 17+51.40		
FED. ROAD DIST. NO.		ILLINOIS FED. AID PROJECT		

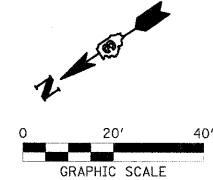
PROPOSED  $\phi$  IL 25  
 PI STA. = 15+94.32  
 $\Delta = 20^\circ 01' 01''$  (LT)  
 $D = 11^\circ 52' 38''$   
 $R = 482.40'$   
 $T = 85.13'$   
 $L = 168.53'$   
 $E = 7.45'$   
 $e = \text{NONE}$   
 P.C. STA = 15+09.19  
 P.T. STA = 16+77.72

EXIST.  $\phi$  IL 25  
 PI STA. = 16+17.57  
 $\Delta = 20^\circ 00' 54''$  (LT)  
 $D = 16^\circ 46' 10''$   
 $R = 341.67'$   
 $T = 60.29'$   
 $L = 119.35'$   
 $E = 5.28'$   
 $e = \text{NONE}$   
 P.C. STA = 15+57.28  
 P.T. STA = 16+76.63



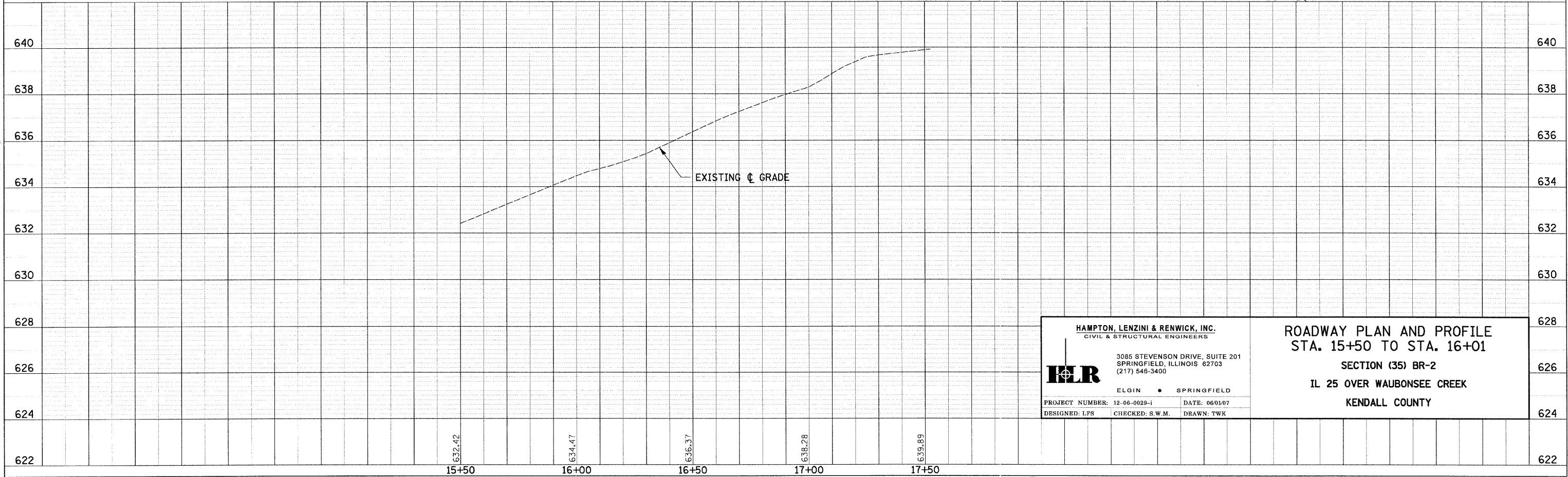
BM #4 "X" CUT IN TOP BOLT  
 PM HYDRANT @ N.E. CORNER  
 OF JACKSON ST. & US RTE 34  
 ELEVATION 647.54

BM #3 BOX CUT IN S.E. CORNER  
 OF DOUBLE HANDHOLE @ S.W.  
 CORNER OF IL RTE 25 & US RTE 34.  
 ELEVATION 639.174



**LEGEND**

- EXISTING R.O.W. LINE
- PROPOSED R.O.W. LINE
- TEMPORARY EASEMENT LINE
- CONSTRUCTION LIMITS
- EXISTING DITCH
- PROPOSED STORM SEWER
- PROPOSED SPECIAL DITCH



<p><b>HAMPTON, LENZINI &amp; RENWICK, INC.</b>                  CIVIL &amp; STRUCTURAL ENGINEERS</p> <p><b>HLR</b></p> <p>3085 STEVENSON DRIVE, SUITE 201                  SPRINGFIELD, ILLINOIS 62703                  (217) 546-3400</p> <p>ELGIN • SPRINGFIELD</p> <p>PROJECT NUMBER: 12-06-0029-I      DATE: 06/01/07                  DESIGNED: LFS      CHECKED: S.W.M.      DRAWN: TWK</p>	<p><b>ROADWAY PLAN AND PROFILE</b>                  STA. 15+50 TO STA. 16+01</p> <p>SECTION (35) BR-2</p> <p>IL 25 OVER WAUBONSEE CREEK</p> <p>KENDALL COUNTY</p>
	<p>624</p>

DATE: \_\_\_\_\_  
 DRAWN BY: \_\_\_\_\_  
 CHECKED BY: \_\_\_\_\_  
 PROJECT NO.: \_\_\_\_\_  
 SHEET NO.: \_\_\_\_\_  
 TITLE: \_\_\_\_\_  
 SCALE: \_\_\_\_\_  
 DATE: \_\_\_\_\_

DATE: \_\_\_\_\_  
 DRAWN BY: \_\_\_\_\_  
 CHECKED BY: \_\_\_\_\_  
 PROJECT NO.: \_\_\_\_\_  
 SHEET NO.: \_\_\_\_\_  
 TITLE: \_\_\_\_\_  
 SCALE: \_\_\_\_\_  
 DATE: \_\_\_\_\_

PLOT DATE: 11/21/2007 11:51:00 AM FILE NAME: P:\12-06-0029-I\12-06-0029-I-14.dwg