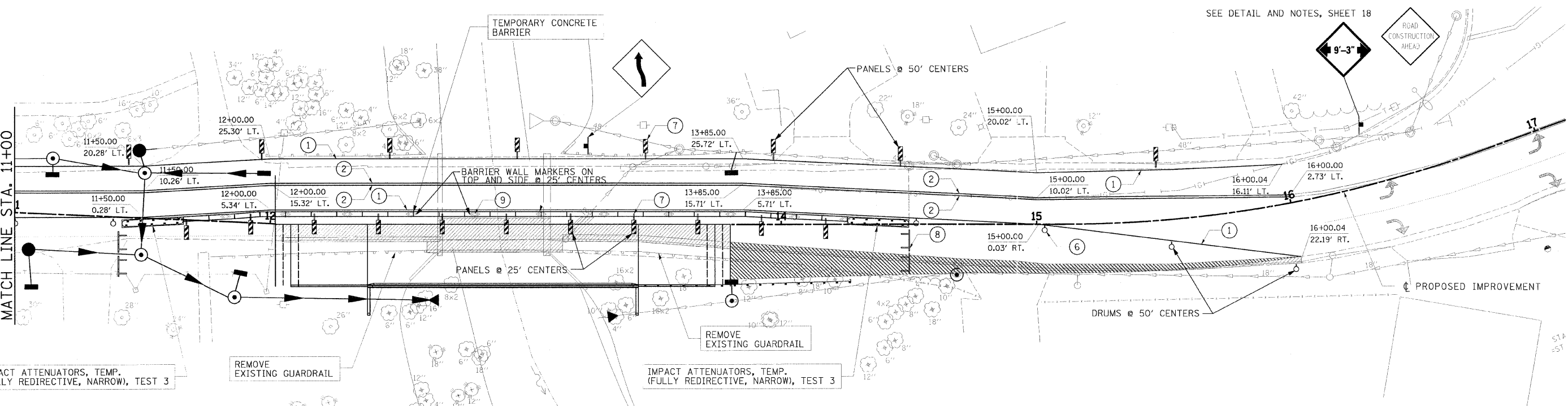
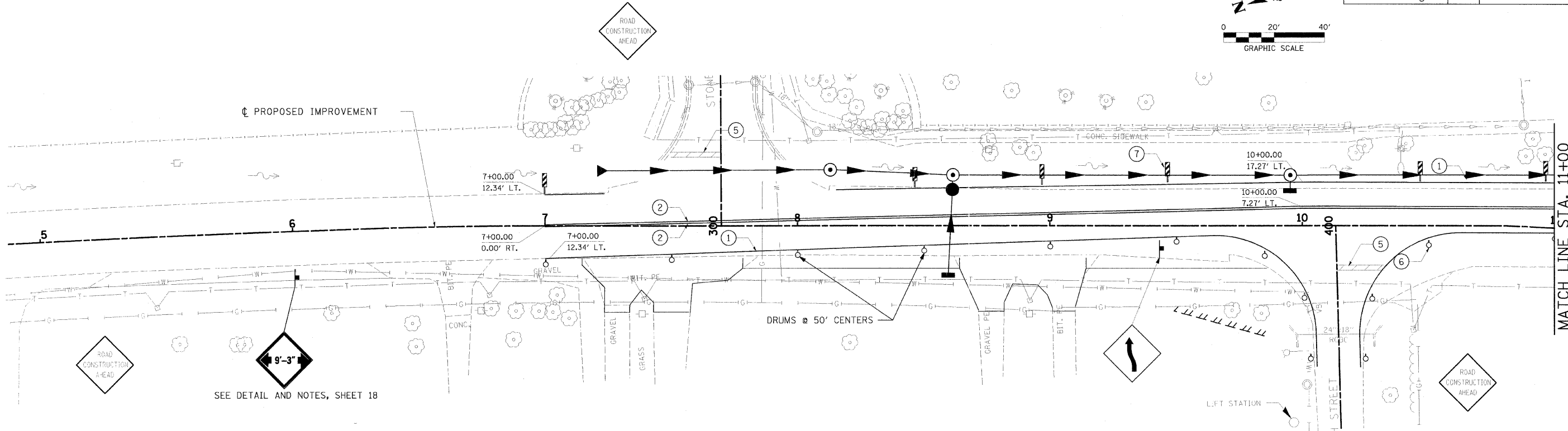
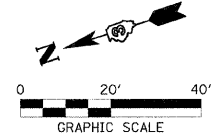


ROUTE NO. FAU 2503	SECTION (35)BR-2	COUNTY KENDALL	SHEET NO. 129	SHEET TOTAL 21
FED. ROAD DIST. NO. 5		F.L.M.O.S.	FED. AID PROJECT	



TEMPORARY PAVEMENT MARKING LEGEND

- 1 TEMPORARY PAINT PAVEMENT MARKING LINE 4" (WHITE)
- 2 TEMPORARY PAINT PAVEMENT MARKING LINE 4" (YELLOW)
- 3 TEMPORARY PAINT PAVEMENT MARKING LINE 12" (SOLID WHITE DIAGONAL @ 20' CENTERS)
- 4 TEMPORARY PAINT PAVEMENT MARKING LINE 12" (SOLID YELLOW DIAGONAL @ 20' CENTERS)
- 5 TEMPORARY PAINT PAVEMENT MARKING LINE 24" (WHITE)
- 6 BARRICADE OR DRUM WITH MONODIRECTIONAL STEADY BURNING LIGHT
- 7 VERTICAL PANEL WITH MONODIRECTIONAL STEADY BURNING LIGHT
- 8 TYPE III BARRICADE
- 9 BARRIER WALL MARKER, TYPE C

LEGEND

- REMOVAL: BRIDGE / CURB & GUTTER
- PCC WIDENING
- REMOVAL WITH WIDENING

HAMPTON, LENZINI & RENWICK, INC.
 CIVIL & STRUCTURAL ENGINEERS

3085 STEVENSON DRIVE, SUITE 201
 SPRINGFIELD, ILLINOIS 62703
 (217) 546-3400

ELGIN • SPRINGFIELD

PROJECT NUMBER: 12-06-0029-1 DATE: 06/01/07
 DESIGNED: LFS CHECKED: DRAWN: TWK

STAGING PLANS & TRAFFIC CONTROL
STAGE 1
 SECTION (35) BR-2
 IL 25 OVER WAUBONSEE CREEK
 KENDALL COUNTY

PLOT DATE: 11/14/2008 FILE NAME: P:\12-06-0029\Stage1\Phase 1\12-06-0029-sh1-stage1.dwg