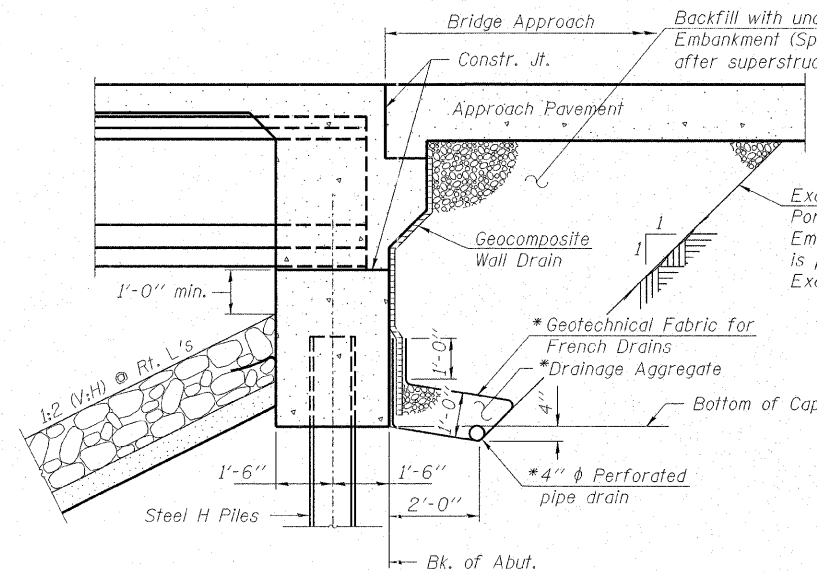
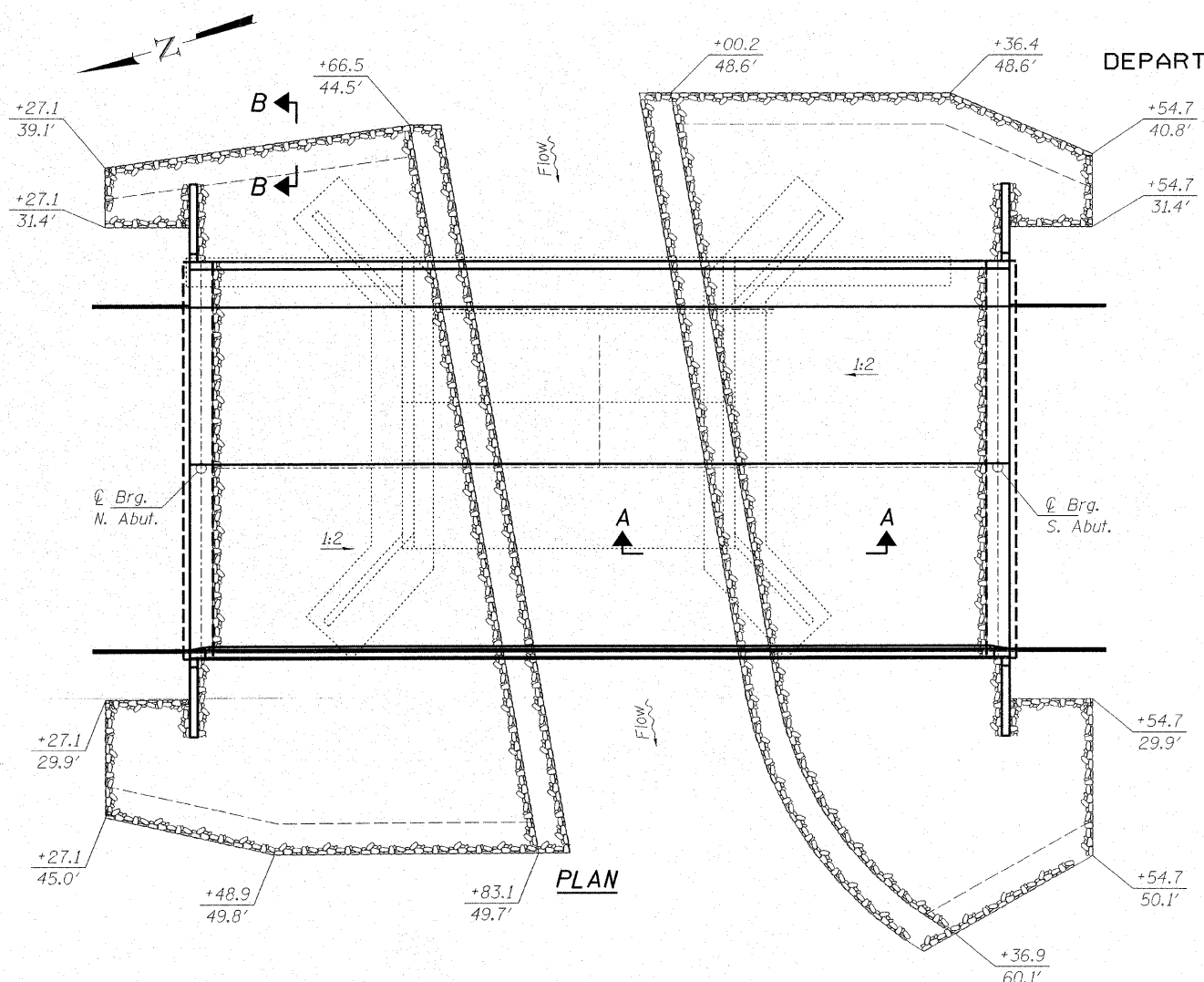


STATE OF ILLINOIS  
DEPARTMENT OF TRANSPORTATION

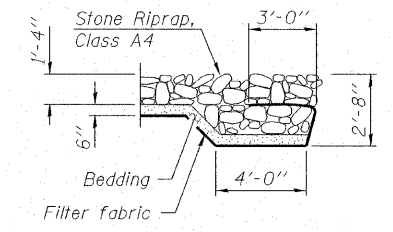
ROUTE NO.	SECTION	COUNTY	SHEET NO.	SHEET NO.
FAU 2503	(35) BR-2	KENDALL	129	26
FED. ROAD DIST. NO. 7		ILLINOIS	FED. AID PROJECT	

Contract No. 66399

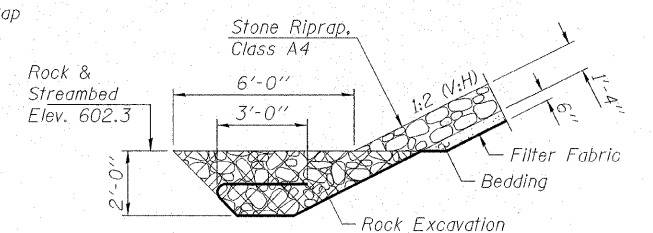


SECTION THRU INTEGRAL ABUTMENT

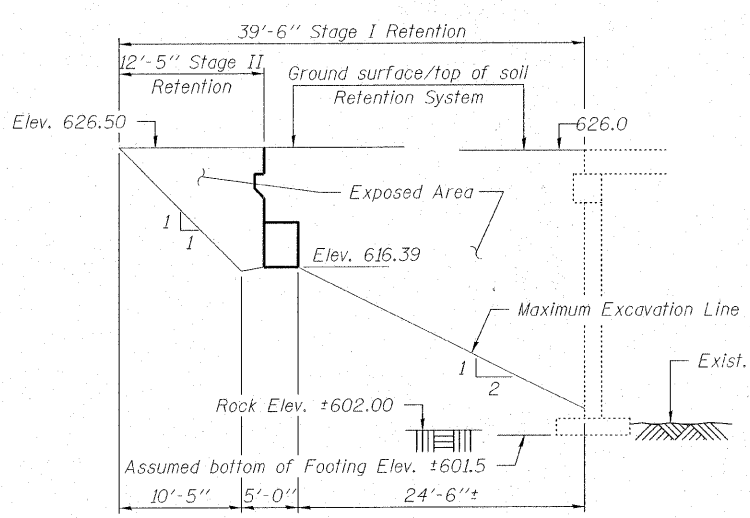
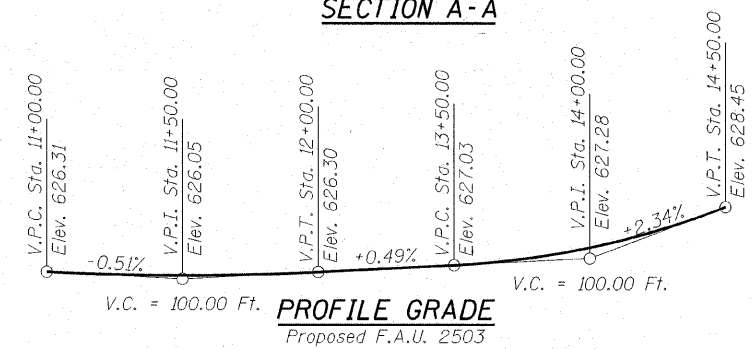
\* Included in the cost of Pipe Underdrains for Structures.  
Note:  
All drainage system components shall extend to 2'-0" from the end of each wingwall except an outlet pipe shall extend until intersecting with the side slopes. The pipes shall drain into concrete headwalls. (See Article 601.05 of the Standard Specifications and Highway Standard 60110).



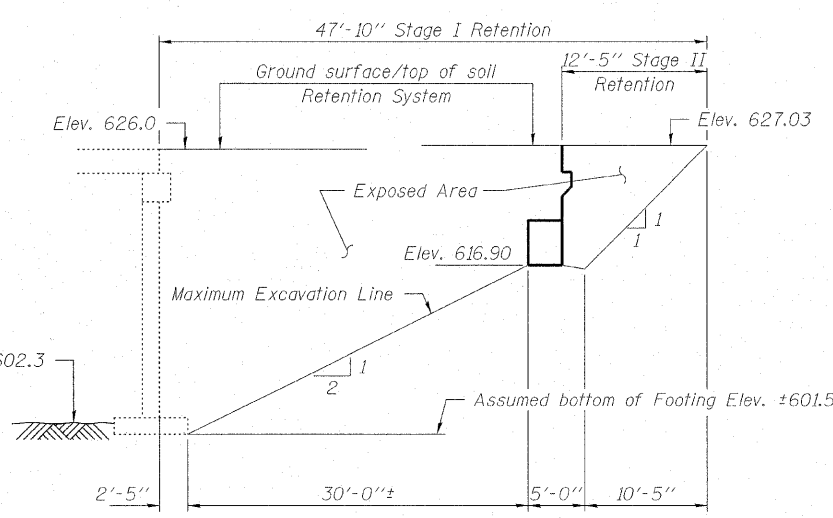
SECTION B-B



SECTION A-A



NORTH ABUTMENT



SOUTH ABUTMENT

A cantilevered sheet piling design does not appear feasible and additional members or other retention systems may be necessary. The Contractor shall submit a temporary soil retention system design including plan details and calculations for review and acceptance by the Engineer.

TEMPORARY SOIL RETENTION SYSTEM

WAUBONSEE CREEK  
STATION 12+91.00  
BUILT 200\_ BY  
STATE OF ILLINOIS  
FAU RTE. 2503 (IL 25)  
SEC. (35) BR-2  
STR. NO. 047-0062 LOADING HS 20

NAME PLATE  
See Std. 515001

GENERAL NOTES

Reinforcement bars shall conform to the requirements of ASTM A 706 Gr 60 (IL Modified). See Special Provisions.  
Reinforcement bars designated (E) shall be epoxy coated.  
Layout of slope protection system may be varied in the field to suit ground conditions as directed by the Engineer.  
The embankment configuration shown shall be the minimum that must be placed and compacted prior to construction of the abutments.

**HAMPTON, LENZINI & RENWICK, INC.**  
CIVIL & STRUCTURAL ENGINEERS  
LAND SURVEYORS

**HLR**

3085 STEVENSON DRIVE, SUITE 201  
SPRINGFIELD, ILLINOIS 62703  
(217) 546-3400

ELGIN • SPRINGFIELD

PROJECT NUMBER: 12-06-0029-1 DATE: 01/14/08  
DESIGNED: P.S.L. CHECKED: M.D.C. DRAWN: D.A.B.

**GENERAL DETAILS**  
IL 25 OVER WAUBONSEE CREEK  
F.A.U. ROUTE 2503 / SECTION (35) BR-2  
KENDALL COUNTY  
STATION 12+91.00  
STRUCTURE NO. 047-0062